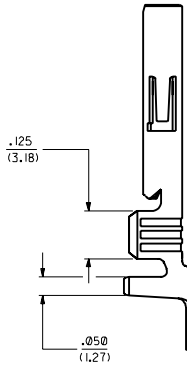
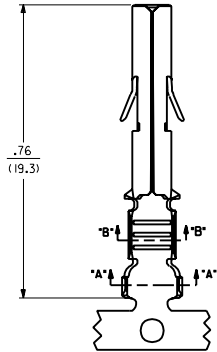
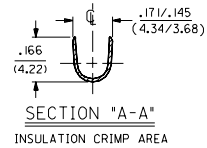
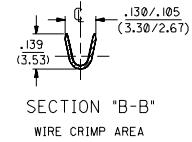
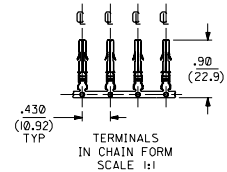
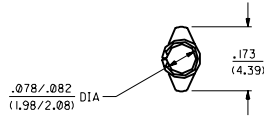


SOCKET TERMINAL
42024-***



SEE SHEET 2 FOR CHART, MATERIAL, PLATING, NOTES, AND CRIMP OPTIONS

2	C	C	REVISED
1	C	C	UDR999-0346
			11-25-98 SAMIEC
MFG. SH.		REV.	LTR.
			REVISIONS

DIMENSIONS SHOWN METRIC INCH
 TOLERANSEN ANGELAR 1:100
 TOLERANSEN ANGELAR 1:100

INCH	METRIC
± .010	± 0.25
± .015	± 0.38
± .038	

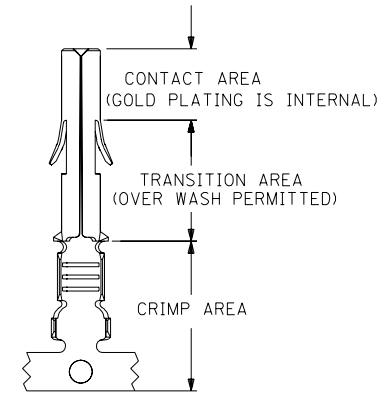
DRWG. NAME APP. DATE DESG. NO. DATE
 APP'D. CWF SCALE 4 : 1 SOLENOID VALVE

TITLE: TERMINAL, SOCKET
 .084 / (2.13) DIA. SERIES

MOLEX INCORPORATED
 1 OF 2
 SD-42024-***
 SEE CHART

NO DIMENSIONED DIMENSIONS MAY FAIL TO REPRESENT ITS TRUE SIZE UNLESS THE DIMENSIONS ARE WRITTEN PERMITS
 CO C

ENG. NO.	EDP NO.	FINISH (REF)	CONTACT AREA (REF)	CRIMP AREA (REF)	MATERIAL (REF)	WIRE SIZE	INSULATION DIA.
42024-IAI	002-08-1001	SDES-88-P901	----	----	C26000	#14-#20 AWG	.060-.130
42024-IAIL	002-08-1002	SDES-88-P901	----	----	C26000	#14-#20 AWG	.060-.130
42024-IBI	002-08-1003	SDES-88-P901	----	----	C51000	#14-#20 AWG	.060-.130
42024-IBIL	002-08-1004	SDES-88-P901	----	----	C51000	#14-#20 AWG	.060-.130
42024-IA2	002-08-1005	SEE NOTE 5	.000030 MIN GOLD	.000075 MIN TIN-LEAD	C26000	#14-#20 AWG	.060-.130
42024-IA2L	002-08-1006	SEE NOTE 5	.000030 MIN GOLD	.000075 MIN TIN-LEAD	C26000	#14-#20 AWG	.060-.130
42024-IB2	002-08-1007	SEE NOTE 5	.000030 MIN GOLD	.000075 MIN TIN-LEAD	C51000	#14-#20 AWG	.060-.130
42024-IB2L	002-08-1008	SEE NOTE 5	.000030 MIN GOLD	.000075 MIN TIN-LEAD	C51000	#14-#20 AWG	.060-.130



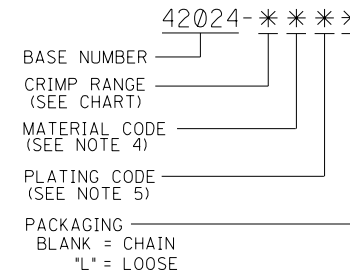
PLATING REGIONS

APPLIES TO GOLD PLATED TERMINALS ONLY

NOTES:

- SOCKET TERMINALS FOR USE WITH THE .084/(2.13) SERIES HOUSINGS:
 PLUG (42021-**) CAP (42022-**)
- SOCKET TERMINALS MATE WITH PIN TERMINALS: .084/(2.13) DIA. SERIES (42023-*****).
- TERMINALS FINISHED IN CHAIN UNLESS SPECIFIED LOOSE. "L" SUFFIX INDICATES LOOSE FORM. (SEE TABLE)
- MATERIAL: .012/(0.30) THICK STRIP:
 A = BRASS, #C26000, PER SMES-124-C7.
 B = PHOSPHOR BRONZE, #C51000, PER SMES-124-E7.
- FINISH:
 1 = HOT TIN DIP 20 m.I./(.051 MICRONS) MINIMUM (PER SDES-88-P901).
 2 = 30 m.I./(.076 MICRONS) MINIMUM SELECT GOLD, AND 75 m.I./(.191 MICRONS) MINIMUM SELECT TIN - LEAD OVER 50 m.I./(.127 MICRONS) MINIMUM NICKEL OVERALL.
- CRIMP RANGE: SEE CHART.
- PRODUCT SPECIFICATION PS-42022-0001 APPLIES.

LEGEND:



B SEE SHEET 1

DIMENSIONS SHOWN (METRIC) INCH		=		REVISE ONLY ON CAD SYSTEM	
UNLESS OTHERWISE SPECIFIED TOLERANCES: ANGULAR ± 1/2°					
INCH		METRIC			
3 PLACE ±	---	---	---		
2 PLACE ±	---	±	---		
1 PLACE	---	±	---		
DRAFT WHERE APPLICABLE MUST REMAIN WITHIN DIMENSIONS					
DRWG. BY: KBP	CHK'D. BY: KBP	FILE NAME: SD-42024X3	DRWG. NO.: SD-42024-*****	DATE: 91/01/31	
APP'D. BY: GW	SCALE: :	THIS DRAWING CONTAINS INFORMATION THAT IS PROPRIETARY TO MOLEX INC. AND SHOULD NOT BE USED WITHOUT WRITTEN PERMISSION.		DIV: CO	SIZE: C

42024

A