

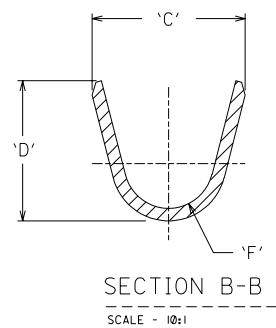
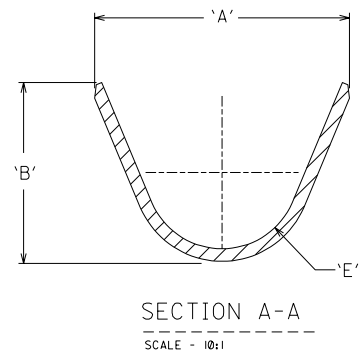
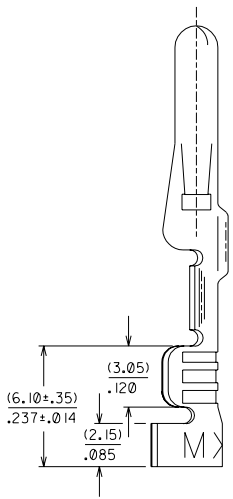
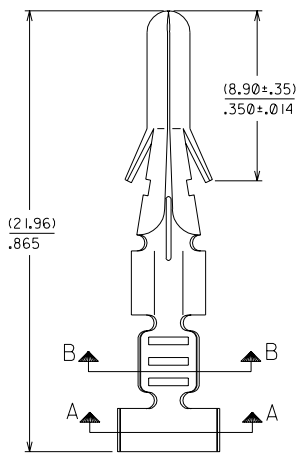
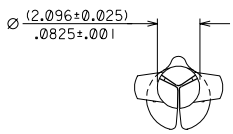
ENG NO.	ENG NO.	FORM	'A'	'B'	'C'	'D'	'E'	'F'
002-08-1234	8980-6C	CHAIN, 14-20 AWG WIRE	(4.44)	(3.39)	(3.02)	(3.61)	(1.23)	(0.61)
002-08-1235	8980-6L	LOOSE, 14-20 AWG WIRE	.175	.133	.119	.142	.048	.024
002-08-1236	8980-6C1	CHAIN, 18-22 AWG WIRE	(3.28)	(2.58)	(2.44)	(2.58)	(0.91)	(0.53)
002-08-1237	8980-6L1	LOOSE, 18-22 AWG WIRE	.129	.102	.096	.102	.036	.021

DWG. NO. SD 8980-6\*

CAD FILE S89806C.DGN

▽

DO NOT SCALE DRAWING



NOTES:  
1. THIS TERMINAL FOR USE WITH HOUSING P/N. 8981-4M\*

(MM)  
INCH

				MATERIAL : (0.25)/.010 THK PHOS BRONZE, ALLOY CA 51000		MOLEX SINGAPORE PTE LTD SHEET 1 OF 1	
				FINISH : (0.0089)/.000035 MIN. TIN/LEAD		GENERAL TOLERANCES ± 0.20/.008	
				OVER (0.0051)/.000020 MIN NICKEL		REV AI	
A1	ADD EDP NUMBERS	S50213	JACK	941108	DWG. NO. SD 8980-6*		
A	RELEASE PER ECN *	S50207	JACK	941103	TITLE : PIN (2.13)/.084 DIA. CRIMP TYPE		
LTR	REVISION RECORD	ECN	DR	CHK	DATE		
REVISE ONLY ON CAD SYSTEM				APPR'D BY	941104	SK TOH	SCALE 4 : 1