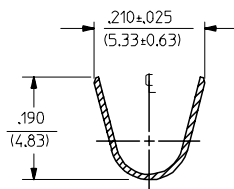
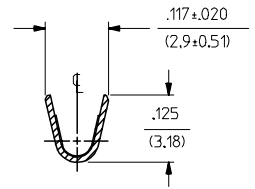


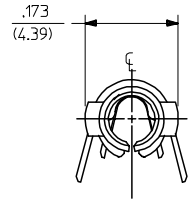
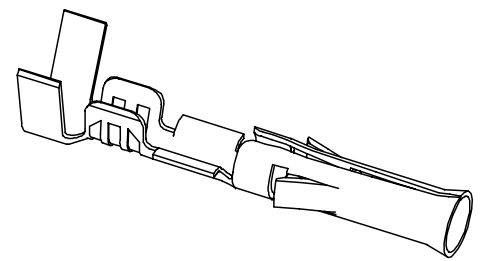
PART NO.	ENG. NO.
02-09-1104	1189-A(P901)L
02-09-1102	1189-A(P901)
02-09-5111	1189-A(P591)L
02-09-5102	1189-A(P591)
02-09-5106	1189-A(P550)L
02-09-5100	1189-A(P550)



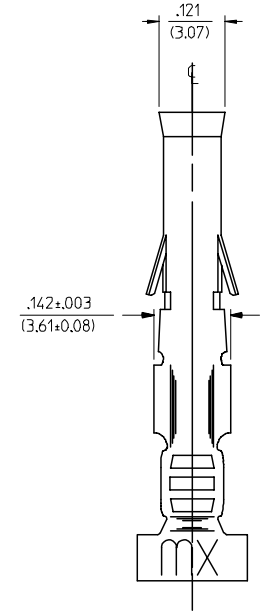
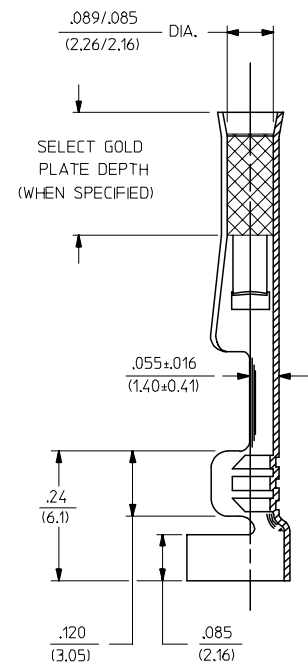
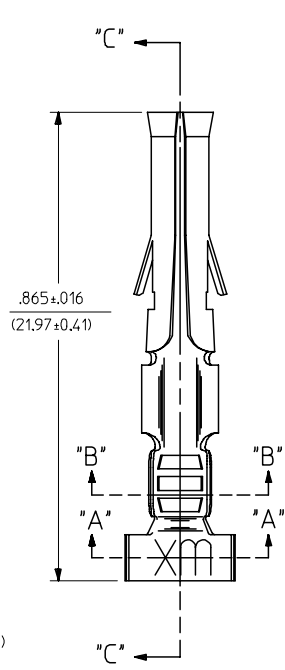
SECT. "A-A"



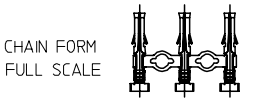
SECT. "B-B"



LEGEND
 1189-A(****)*
 *FORM
 BLANK=CHAIN
 L=LOOSE
 P=PREPLATE
 BLANK=POSTPLATE
 FINISH CODE



SECT. "C-C"



- NOTES:
- MATERIAL: CARTRIDGE BRASS, ALLOY #C26000, .010/(0.25) THICK
 - FINISH CODES:
 - 901 HOT TIN DIP .000020/(0.00051) MIN.
 - 591 SELECT GOLD PLATE .000050/(0.00127) MIN. IN CONTACT AREA, OVER .000050/(0.00127) MIN. NICKEL OVERALL WITH .000010/(0.00025) MAX. GOLD FLASH OVERALL.
 - 550 SELECT GOLD PLATE .000015/(0.00038) MIN. IN CONTACT AREA, OVER .000030/(0.00076) MIN. NICKEL OVERALL WITH .000010/(0.00025) MAX. GOLD FLASH OVERALL.
 - *THE PRIMARY SHIPPING CARTON WILL BE LABELED, "COMPLIANT TO RoHS DIRECTIVE 2002/95/EC AND ELV ANNEX OF DIRECTIVE 2000/53/EC", AND CARTONS WITHOUT THIS LABEL MAY CONTAIN PRODUCT WITH TIN-LEAD.
 - THIS PART CONFORMS TO PROD. SPEC. 02-09.
 - PACKAGING INFORMATION: NOT AVAILABLE
 - TERMINAL FOR USE WITH .093/(2.36) SERIES HOUSINGS AND WILL ACCEPT 14 THRU 20 AWG WIRE.
 - INSERTION FORCE: 3.5 LBS. MAX. WHEN TERMINAL IS INSERTED INTO AN .093 SERIES HOUSING.
 - RETENTION: 20 LBS. MIN. FROM HOUSING.

ADDED PARTS EC NO: UCP2006-1061 DRAWN/PETERSON 2005/11/18 CHKD/FSM TH 2005/11/29 APPR/FSM TH 2005/12/02 REV: C1	QUALITY SYMBOLS ▽=0 ▽=0	GENERAL TOLERANCES (UNLESS SPECIFIED) mm INCH		DIMENSION STYLE IN/MM		SCALE 6:1	DESIGN UNITS INCH	THIRD ANGLE PROJECTION	
		4 PLACES ± --- ± --- 3 PLACES ± --- ± .010 2 PLACES ± 0.25 ± .014 1 PLACE ± 0.35 ± --- ANGULAR ±1/2°	DRAWN BY GEP CHECKED BY RW APPROVED BY RAS	DATE 1987/10/26 DATE 1987/10/26 DATE 1987/10/26	TITLE CRIMP TERMINAL, FEMALE, .093/(2.36) DIA. 14-20 AWG		MATERIAL NO. SEE CHART	DOCUMENT NO. SD-1189-*	SHEET NO. 1 OF 1
DRAFT WHERE APPLICABLE MUST REMAIN WITHIN DIMENSIONS				THIS DRAWING CONTAINS INFORMATION THAT IS PROPRIETARY TO MOLEX INCORPORATED AND SHOULD NOT BE USED WITHOUT WRITTEN PERMISSION					