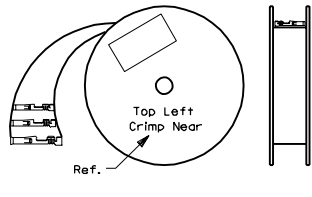
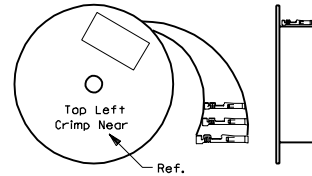


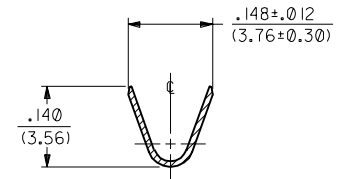
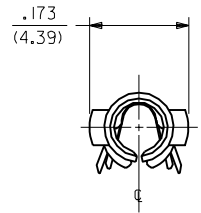
PART NO.	ENG. NO.
02-09-1119	1381-A(P90)IL
02-09-1117	1381-A(P90)I
02-09-1115	1381-A(P90)II



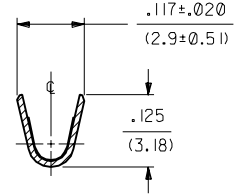
REWOUND CHAIN



STANDARD CHAIN



SECT. "A-A"



SECT. "B-B"

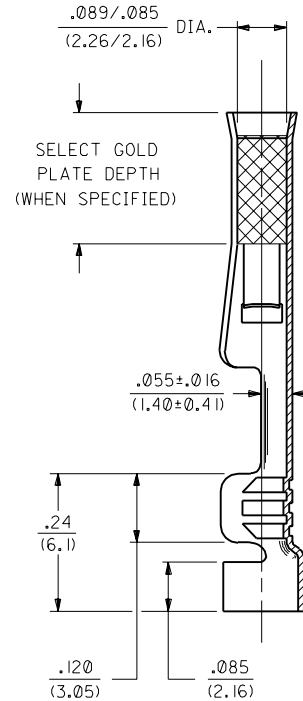
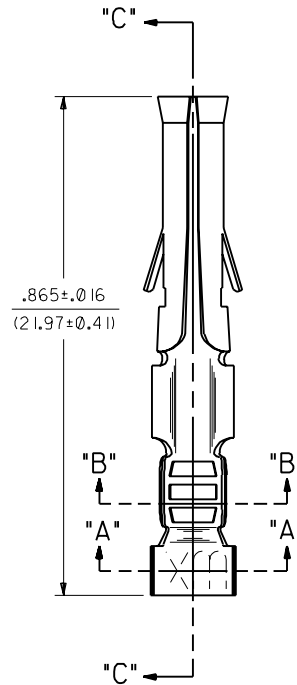
**LEGEND**

1381-A(\*\*\*\*)\*

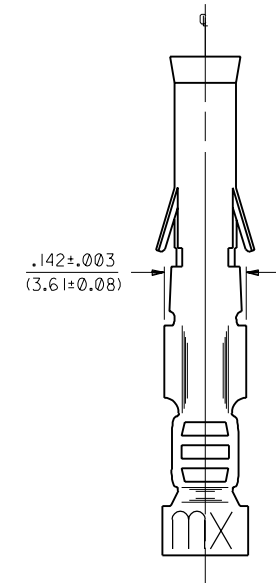
- FORM
  - BLANK = STD. CHAIN
  - A = REWOUND CHAIN
  - I = STD. CHAIN WITH INTERLEAF PAPER
  - L = LOOSE
  - FINISH CODE
- P = PREPLATE  
BLANK = POSTPLATE

**NOTES:**

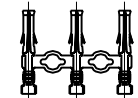
- MATERIAL: BRASS, ALLOY #26000
- FINISH:
  - 901 HOT TIN DIP .000020/(0.0005) MIN.
  - 914 HOT TIN-LEAD DIP .000040/(0.0010) MIN.
  - 102 TIN PLATE .000200/(0.0050) MIN. OVER .000100/(0.0025) MIN. COPPER OVERALL.
  - 575 SELECT GOLD PLATE .000050/(0.0012) MIN. IN CONTACT AREA, .000050/(0.0012) MIN. TIN-LEAD IN CRIMP AREA OVER .000050/(0.0012) MIN. NICKEL OVERALL.
  - 591 SELECT GOLD PLATE .000050/(0.0012) MIN. IN CONTACT AREA, OVER .000050/(0.0012) MIN. NICKEL OVERALL WITH .000010/(0.00025) MAX. GOLD FLASH OVERALL.
  - 550 SELECT GOLD PLATE .000015/(0.00038) MIN. IN CONTACT AREA, OVER .000030/(0.00076) MIN. NICKEL OVERALL WITH .000010/(0.00025) MAX. GOLD FLASH OVERALL.
  - 603 SELECT GOLD PLATE .000030/(0.00076) MIN. IN CONTACT AREA, .000100/(0.0025) MIN. TIN-LEAD IN CRIMP AREA OVER .000050/(0.0012) MIN. NICKEL OVERALL WITH .000010/(0.00025) MAX. SELECT GOLD FLASH.
- THIS PART CONFORMS TO PRODUCT SPECIFICATION 02-09.
- TERMINAL FOR USE WITH .093/(2.36) SERIES HOUSINGS AND WILL ACCEPT 18-22 AWG WIRE
- INSERTION FORCE: 3.5 LBS. MAX. WHEN TERMINAL IS INSERTED INTO AN .093 SERIES HOUSING.
- TERMINAL RETENTION: 20 LBS. MIN. FROM HOUSING.



SECT. "C-C"



CHAIN FORM  
FULL SCALE



REV.	DATE	BY	REVISIONS
BV			ADD -(P90)I ECN#2001-0905 4/5/01 BW
BU			OBS. VER'S. PER ECR U6 0543 C/C 11/2/95 RW
BT			REVISE PER ECR U5 0799 C/C 2/10/95 RW
BS			CARRIER CUTOFF ECR #U1 0223 1-4-91 RW
BR			FINAL REL. (P575) ERO 28218 GEP 4-12-89 RW
BP			REV. & REDRAWN ECR 10490 GEP 11-6-87 RW

DIMENSIONS SHOWN (METRIC) INCH	
3 PLACE ±	.010
2 PLACE ±	.014 ± 0.25
1 PLACE ---	± 0.35

UNLESS OTHERWISE SPECIFIED  
TOLERANCES ANGULAR ± 1/2°

FILE NAME: SD-1381X1

TITLE: CRIMP TERM., FEMALE  
.093/(2.36) DIA.  
FOR 18 THRU 22 AWG WIRE

MOLEX INCORPORATED  
1381-1115 60532 U.S.A.

PART NO. SD-1381-1

DATE: 11/6/87

DRWG. NO. CP

MFG. SH. REV. LTR. REVISE ONLY ON CAD SYSTEM

DRWG. BY	CHK'D. BY	SCALE
GEP	RW	6 : 1

THIS DRAWING CONTAINS INFORMATION THAT IS PROPRIETARY TO MOLEX INC. AND SHOULD NOT BE USED WITHOUT WRITTEN PERMISSION.