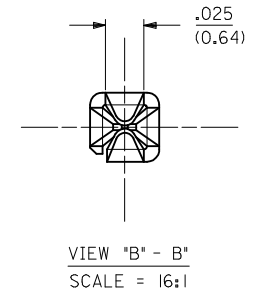
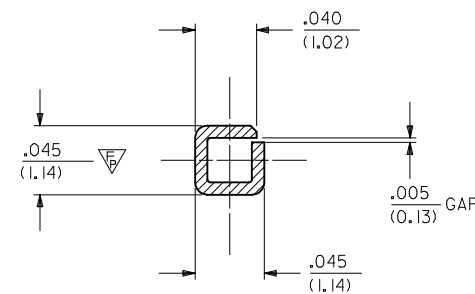
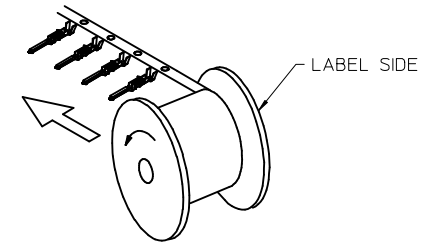


NOTES:

- 1- MATERIAL: PHOSPHOR BRONZE ALLOY
 - 2- FINISH:
 - (A) - SELECTIVE GOLD PLATE .000030/(0.00076)MIN., AND SELECTIVE TIN .000100/(0.00254) OVER .000050/(0.00127) NICKEL OVERALL.
 - (B) - .000100/(0.00254) TIN OVER .000050/(0.00127) NICKEL.
 - 3- PRODUCT SPECIFICATION: TBD.
 - 4- PACKAGING INFORMATION: SEE CHART FOR CHAIN PK-5556-003 FOR LOOSE TERMINALS
- ▲ - MEASURING POINT FOR PLATING THICKNESS.
 ▽ - 6-TERMINAL CANNOT BE USED IN 42475 OR 43558 HOUSINGS.
 ▲ - GOLD PLATING AREA.
 ▲ - TIN PLATING AREA.

RIGHT TO LEFT
UNREELING



30490-2012	B	LOOSE		4000	18-24
30490-2002		CHAIN	RIGHT TO LEFT		
30490-1012	A	LOOSE		4000	18-24
30490-1002		CHAIN	RIGHT TO LEFT		
ITEM NO.	PLATING	FORM	UNREEL DIRECTION	QTY. PER REEL	WIRE GAGE

UPDATE TABLE EC NO: UCP2014-3954 DRAWINGUYEN 2014/04/07 CHKD:JBELL 2014/04/07 APPR:FSMITH 2014/05/16	QUALITY SYMBOLS	GENERAL TOLERANCES (UNLESS SPECIFIED)	DIMENSION STYLE	SCALE	DESIGN UNITS	THIRD ANGLE PROJECTION
	▽=0	mm INCH	IN/MM	8:1	INCH	
	▽=0	4 PLACES ± --- ± ---	DRAWN BY	DATE	TITLE	
	▽=2	3 PLACES ± --- ± .010	BBW	92/ 1/22	MALE CRIMP TERMINAL MINI-FIT STYLE	
	2 PLACES ± 0.25 ± .015	CHECKED BY	DATE	molex DOCUMENT NO. SD-30490-***2 SHEET NO. 1 OF 1		
	1 PLACE ± 0.38 ± ---	APPROVED BY	DATE			
	0 PLACE ± ±	JAMARA	2011/01/28	MATERIAL NO. SEE CHART DRAFT WHERE APPLICABLE MUST REMAIN WITHIN DIMENSIONS		
F4	REV	SIZE	THIS DRAWING CONTAINS INFORMATION THAT IS PROPRIETARY TO MOLEX INCORPORATED AND SHOULD NOT BE USED WITHOUT WRITTEN PERMISSION			