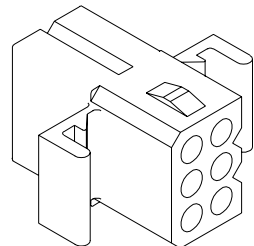
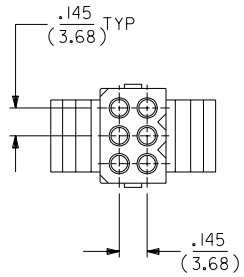
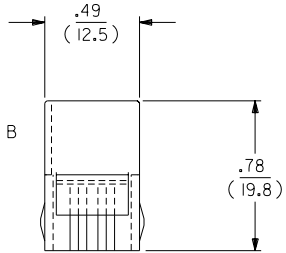
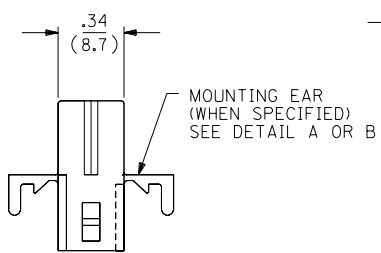
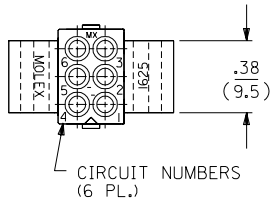
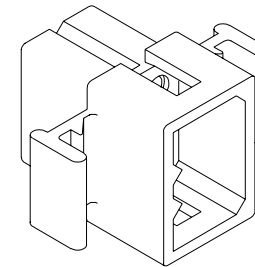
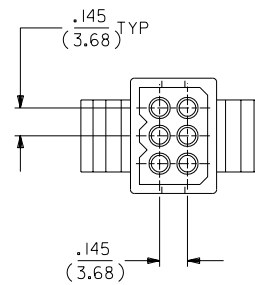
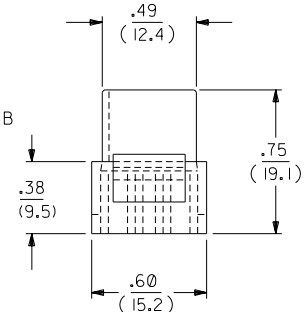
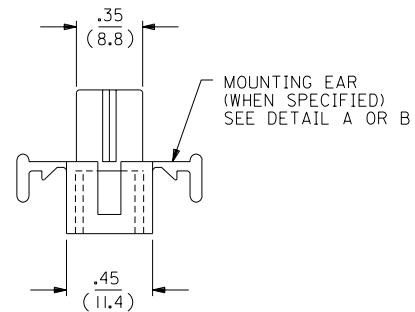
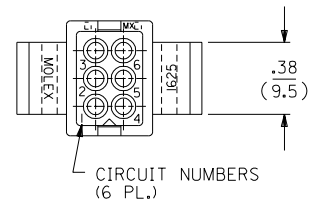


RECEPTACLE



SHOWN WITH STANDARD EAR

PLUG



SHOWN WITH STANDARD EAR

J OBSOLETE P/N
UCP2003-1545
AELHAG, 03/01/16
I OBSOLETE P/N
UCR2002-0270
COMERC1 01/9/26

H2 REVISED
UCR1998-0126
WANG 98-04-06
H1 ADD -R2 VERSION
PER ECN #16 0093
7-31-95 RW

H REVISED & REDRAWN
ECR # U81740
07-22-88 KBW

REV.	SH.	REV.	LTR.	REVISIONS
2	J			
1	J			

DIMENSIONS SHOWN (METRIC) INCH UNLESS OTHERWISE SPECIFIED TOLERANCES: ANGULAR ± 1/2°		TITLE ".062/(1.57) HOUSINGS PLUG & RECEPTACLE 6 CIRCUIT, .145/(3.68) ⌀	
3 PLACE ± .010 ---	INCH METRIC	MOLEX INCORPORATED SHEET NO. DATE L1SLE,ILL. 60532 U.S.A. 1 OF 2 07/22/88	
2 PLACE ± .014 ± 0.25		PART NO. DRWG. NO. SD-1625-6*	
1 PLACE --- ± 0.35		SEE CHART	
DRAFT WHERE APPLICABLE MUST REMAIN WITHIN DIMENSIONS		THIS DRAWING CONTAINS INFORMATION THAT IS PROPRIETARY TO MOLEX INC. AND SHOULD NOT BE USED WITHOUT WRITTEN PERMISSION	
DRWG. BY KBW	CHK'D. BY RW	FILE NAME M16256	DIV. SIZE CP C
APP'D. BY RAS	SCALE 2:1		

PLUG		
ORDER NO	ENG NO	
03-06-2062	1625-6P	
03-06-2061	1625-6P1	
03-06-7062	1625-6PBK	
03-06-7061	1625-6P1BK	OBSOLETE
03-06-7063	1625-6POR	OBSOLETE
-	-	

RECEPTACLE		
ORDER NO	ENG NO	
03-06-1061	1625-6R	
03-06-1062	1625-6R1	
03-06-6061	1625-6RBK	
03-06-6062	1625-6R1BK	OBSOLETE
03-06-6063	1625-6R0R	OBSOLETE
03-06-6064	1625-6RBU	
NOT TOOLED	1625-6R2	

LEGEND:

1625-6****

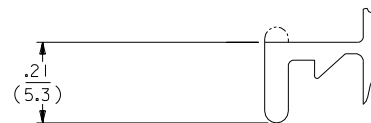
CIRCUIT SIZE

P = PLUG
R = RECEPTACLE

BLANK = WITH STANDARD EARS
1 = WITHOUT EARS
2 = WITH PREBENT EARS

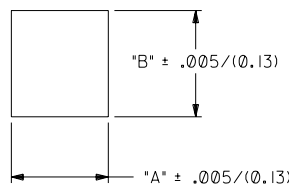
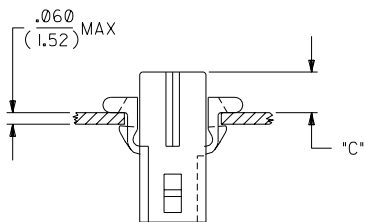
COLOR:

BLANK = NATURAL COLOR
AM = AMBER BK = BLACK BU = BLUE
BN = BROWN GY = GRAY GN = GREEN
OR = ORANGE RD = RED YW = YELLOW

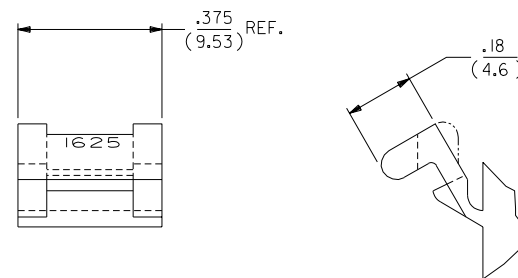


DETAIL A

.062/(1.57) STANDARD MOUNTING EAR
(SCALE 4:1)



HOUSING	DIM. "A"	DIM. "B"	"C" PREBENT EAR	"C" STANDARD EAR
PLUG	.607/(15.42)	.615/(15.62)	.22/(5.6)	.18/(4.6)
RECEPT.	.505/(12.83)	.552/(14.02)	.23/(5.8)	.19/(4.8)



DETAIL B

.062/(1.57)PREBENT MOUNTING EAR
(SCALE 4:1)

NOTES:

1. MOLEX PRODUCT SPEC 02-06 APPLIES
2. MATERIAL: NYLON TYPE 6/6, 94V-2

LTR.	REVISIONS	LTR.	REVISIONS

DIMENSIONS SHOWN (METRIC) INCH	
UNLESS OTHERWISE SPECIFIED TOLERANCES: ANGULAR ± 1/2°	
5 PLACE ± .010	---
2 PLACE ± .014	± 0.25
1 PLACE ---	± 0.35
DRAFT WHERE APPLICABLE MUST REMAIN WITHIN DIMENSIONS	
DRWG. BY: KBW	CHK'D. BY: RW
APP'D. BY: RAS	SCALE: :

□ =	▼ =	REVISE ONLY ON CAD SYSTEM
TITLE .062/(1.57) HOUSINGS PLUG & RECEPTACLE 6 CIRCUIT, .145/(3.683) C		
MOLEX INCORPORATED L15LE,ILL. 60532 U.S.A.	SHEET NO. 2	DATE 07/22/88
PART NO. SEE CHART	DRWG. NO. SD-1625-6*	
FILE NAME M16256	THIS DRAWING CONTAINS INFORMATION THAT IS PROPRIETARY TO MOLEX INC. AND SHOULD NOT BE USED WITHOUT WRITTEN PERMISSION.	
CP	CP	C