

Distributed by:

JAMECO[®]
ELECTRONICS

www.Jameco.com ♦ 1-800-831-4242

The content and copyrights of the attached
material are the property of its owner.

Jameco Part Number 792415

The subject products should meet the following requirements when tested under the condition of involving all circuits with terminals crimped on the specified maximum size wire.

1. Electrical Performance

	Item	Test Condition	Requirement
1-1	Rated voltage and current		1~15 CKTS. AC&DC 250V 5A
			24 CKTS. AC&DC 250V 4A
1-2	Contact resistance	Mate connectors measure by Dry Circuit, 20mV max., 10mA.	10 mΩ max.
1-3	Dielectric strength	When applied AC 1500V 1 minute between adjacent terminals or ground	No breakdown
1-4	Insulation resistance	When applied DC 500V between adjacent terminals or ground	1000 MΩ min.

2. Mechanical Performance

	Item	Test Condition	Requirement
2-1	Insertion force	Mating speed : 25±3mm/minute	See para 7
2-2	Extraction force	Disengaging speed : 25±3mm/minute	See para 7
2-3	Durability	When mated up to 30 cycles by the rate of 10 cycles per minute	Contact resistance 20 mΩ max.
			Insertion extraction force See para 7
2-4	Terminal retention force	Pull speed : 25±3mm/minute	7.0 kg min.
2-5	Terminal strength	When applied a load of 500gw, 1 minute	No damage

3. Environmental Performance

	Item	Test Condition	Requirement
3-1	Temperature rise	When carried the rated current	30 °C max.
3-2	Vibration	1.5mm,10-55-10Hz/min.,each 2 hrs. for X,Y&Z directions, applying 1mA-DC current	Contact resistance 20 mΩ max.
			Discontinuity 1 μsec. max.
			Appearance No damage
3-3	Shock	50G,each 3 times for X,Y,Z directions, applying 1mA-DC current	Discontinuity 1 μsec. max.
			Appearance No damage

REV. B

Item	Test Condition	Requirement	
3-4 Solderability	Soldering time : 3 ± 0.5 sec. Soldering pot : 230 ± 5 °C	Min. 3/4 of immersed area	
3-5 Resistance to soldering heat	Soldering time : 5 ± 0.5 sec. Soldering pot : 260 ± 5 °C	No damage	
3-6 Heat resistance	85 ± 2°C, 96 hours	Contact resistance	20 mΩ max.
		Appearance	No damage
3-7 Humidity	Temperature : 40±2°C Relative Humidity: 90~95% Duration : 96 hours Measurement must be taken within 30 minute after tested	Contact resistance	20 mΩ max.
		Dielectric strength	To pass para 1-3
		Insulation resistance	100 MΩ min.
		Appearance	No damage
3-8 Temperature cycling (5 cycles)	One cycle consists of (1) -55±3°C, 30 minute (2) Room temp. 10~15 minute (3) 105±2°C, 30 minute (4) Room temp. 10~15 minute	Contact resistance	20 mΩ max.
		Appearance	No damage
3-9 Salt Spray	Temperature: 35±2°C Solution : 5±1% Spray time : 48±4 hours Measurement must be taken after water rinse.	Contact resistance	20 mΩ max.
		Appearance	No significant corrosion
3-10 SO ₂ Gas	24 hours in sulfur dioxide gas (SO ₂) 50±5ppm at 40±2°C	Contact resistance	20 mΩ max.

4. Terminal To Be Used

	Customer P/No	Molex P/No	Wire Size	Insulation Dia.
1.		1560,1561	AWG #18 ~ #24	φ (1.5) ~ 3.1
2.		1854,1855	AWG #22 ~ #28	φ (1.1) ~ 1.5
3.		1778,1779	-----	-----
4.				

5. Ambient Temperature Range : -40°C ~ 105°C

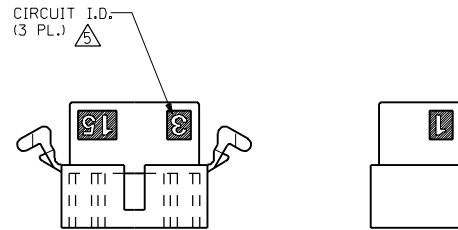
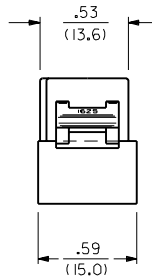
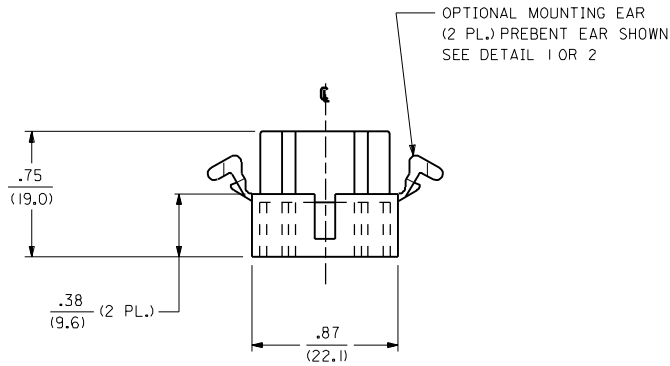
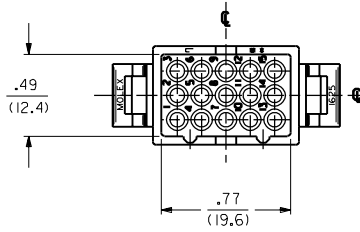
6. Construction, Dimension and Material : Specified by the attached drawing.

REV. B

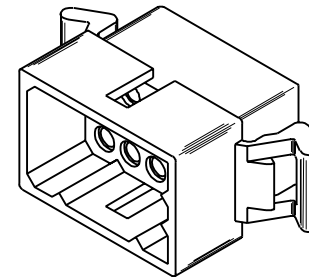
7. Insertion and Extraction Force

No of Ckt.	Insertion Force (kgf, max.)			Extraction Force (kgf, min.)		
	1st	6th	30th	1st	6th	30th
1	5.0	4.5	4.5	0.8	0.5	0.5
2	7.0	6.0	6.0	1.5	1.0	1.0
3	10.0	9.0	8.0	1.8	1.2	1.2
4	13.0	12.0	10.0	2.0	1.4	1.4
5	15.5	14.0	11.0	2.3	1.5	1.5
6	18.0	16.0	12.0	2.5	1.6	1.6
9	26.0	23.0	17.0	3.5	2.5	2.5
12	34.0	30.0	23.0	4.5	3.5	3.5
15	40.0	35.0	30.0	5.5	4.5	4.5
24	60.0	55.0	50.0	6.5	5.5	5.5

REV. B



MTG. EAR NOT SHOWN FOR CKT. I.D. CLARITY



PLUG HOUSING

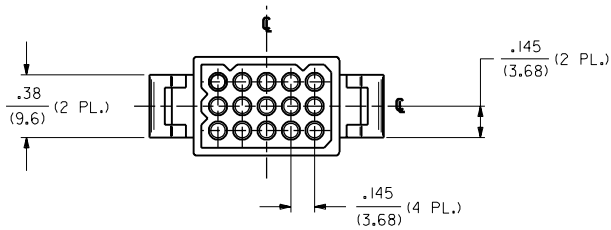
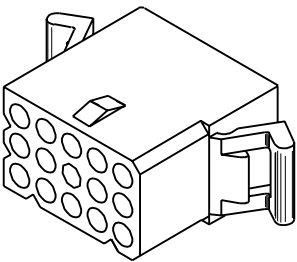
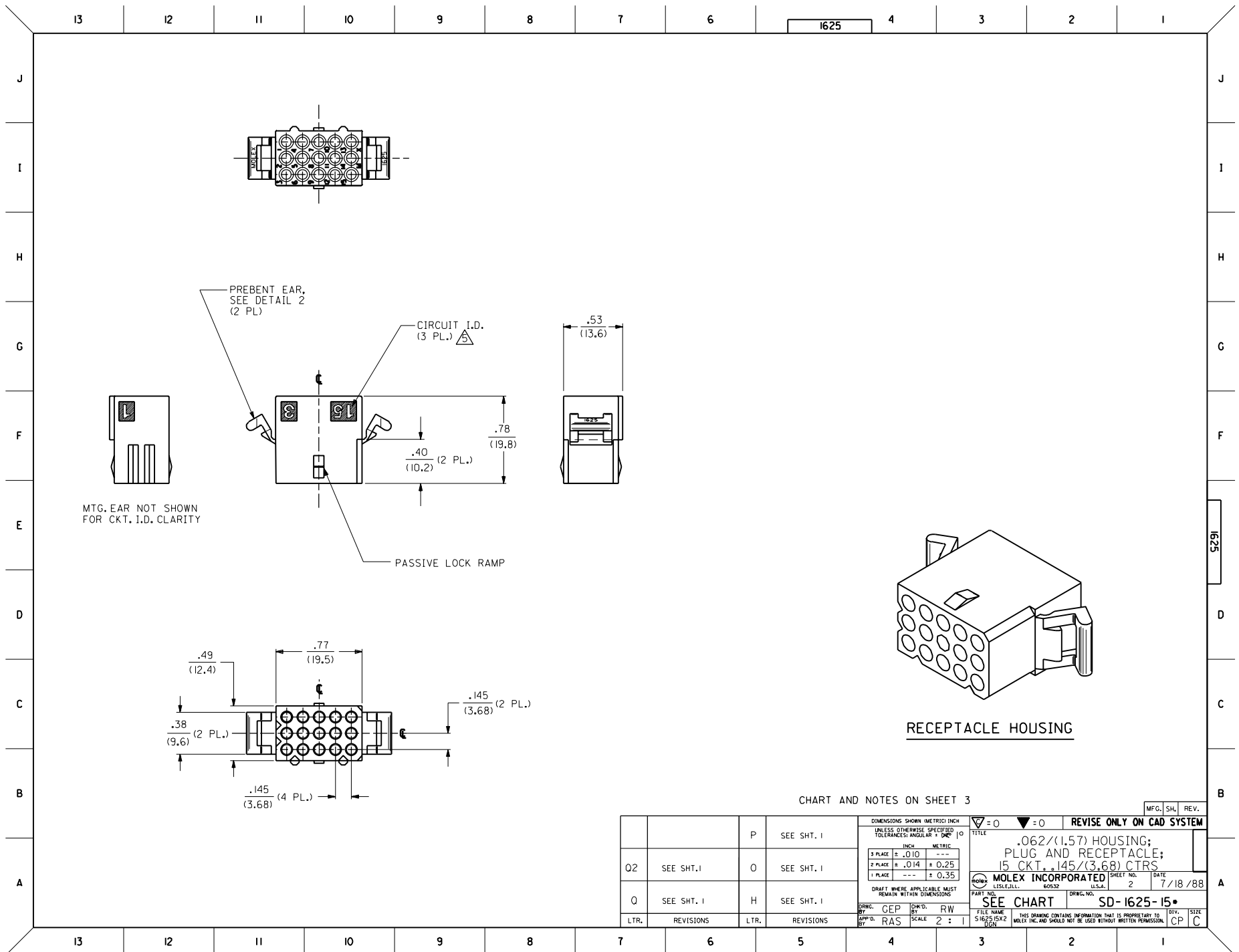


CHART AND NOTES ON SHEET 3

02	REVISION ECN #U70777 97-4-22 JI WANG
01	FINAL REL. - ISR2 ECN #U5 1285 6-22-95 RW
0	REVISE PER ECR U4 0050 OC 1/12/94 RW
P	REVISE PER ECN #U3 0508 4/1/93 RW
0	REVISE PER ECR U2 0850 OC 6/5/92 RW
N	REVISE PER ECR U1 2251 OC 11/20/91 RW
M	REVISE PER ECR U1 2108 OC 10/28/91 RW
L	REMOVE PT.NO. FROM -ISR2, ECR U1 1908 OC 9/20/91 RW
K1	ADDED & FINAL REL PER ERO #28346 GEP 5-4-89 RW
K	ADDED OPTIONS ECR # U90277 KBW 03-22-89 RW
J	ADDED OPTIONS ECR # UB2108 KBW 10-10-88 RW
H	REV. & REDRAWN ECR U8 1714 GEP 7-15-88 RW
3	02
2	02
1	02

MFG.	SH.	REV.	LTR.	REVISIONS

DIMENSIONS SHOWN METRIC (INCH)		▽=0	▽=0	REVISE ONLY ON CAD SYSTEM
UNLESS OTHERWISE SPECIFIED TOLERANCES: ANGULAR ± .05°		TITLE		
		.062/(1.57) HOUSING; PLUG AND RECEPTACLE; 15 CKT. ± .145/(3.68) CTRS		
		PART NO. DATE		
		L15LEJLL 60532 U.S.A. 1 of 3 7/15/88		
MOLEX INCORPORATED		DRWG. NO.		
SEE CHART		SD-1625-15		
DRWG. BY: CEP	CHKD. BY: RW	FILE NAME: S162515X1	DRWG. NO.:	SIZE: CP
APP'D. BY: RAS	SCALE: 2:	DATE:	REV.:	CP



RECEPTACLE HOUSING

CHART AND NOTES ON SHEET 3

		P		SEE SHT. 1	<small>DIMENSIONS SHOWN (METRIC) INCH UNLESS OTHERWISE SPECIFIED TOLERANCES: ANGULAR ± .001°</small> <table border="1"> <tr> <td>3 PLACE</td> <td>± .010</td> <td>---</td> </tr> <tr> <td>2 PLACE</td> <td>± .014</td> <td>± 0.25</td> </tr> <tr> <td>1 PLACE</td> <td>---</td> <td>± 0.35</td> </tr> </table> <small>DRAFT WHERE APPLICABLE MUST REMAIN WITHIN DIMENSIONS</small>	3 PLACE	± .010	---	2 PLACE	± .014	± 0.25	1 PLACE	---	± 0.35	<table border="1"> <tr> <td>DRWG. NO.</td> <td>60532</td> <td>SHEET NO.</td> <td>2</td> <td>DATE</td> <td>7/18/88</td> </tr> <tr> <td>FILE NAME</td> <td colspan="5">S162515X2.DGN</td> </tr> </table>	DRWG. NO.	60532	SHEET NO.	2	DATE	7/18/88	FILE NAME	S162515X2.DGN				
3 PLACE	± .010	---																									
2 PLACE	± .014	± 0.25																									
1 PLACE	---	± 0.35																									
DRWG. NO.	60532	SHEET NO.	2	DATE	7/18/88																						
FILE NAME	S162515X2.DGN																										
Q2	SEE SHT. 1	O	SEE SHT. 1																								
Q	SEE SHT. 1	H	SEE SHT. 1																								
LTR.	REVISIONS	LTR.	REVISIONS																								

MFG. SH. REV.

REVISIONS

SEE CHART

.062/(1.57) HOUSING;
PLUG AND RECEPTACLE;
15 CKT. .145/(3.68) CTRS

MOLEX INCORPORATED
LITTLE ROCK, AR 60532 U.S.A.

SD-1625-15

THIS DRAWING CONTAINS INFORMATION THAT IS PROPRIETARY TO MOLEX INC. AND SHOULD NOT BE USED WITHOUT WRITTEN PERMISSION.

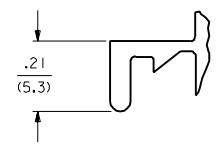
13 12 11 10 9 8 7 6 5 4 3 2 1

PLUG	
PART NO.	ENG. NO.
03-06-2151/A	1625-15P
03-06-7155	1625-15P1BN
03-06-7152	1625-15P1BK
03-06-2152	1625-15P1
03-06-7151/A	1625-15PBK
03-06-7153/A	1625-15PBN
03-06-7154/A	1625-15PBU

RECEPTACLE	
PART NO.	ENG. NO.
03-06-1152	1625-15R1
03-06-6152	1625-15R1BK
03-06-6155	1625-15R2
NOT TOOLED	1625-15R2BK

RECEPTACLE LEGEND:

1625-15R***
 CIRCUIT SIZE
 R = RECEPTACLE
 1 = WITHOUT EARS
 2 = WITH PREBENT EARS

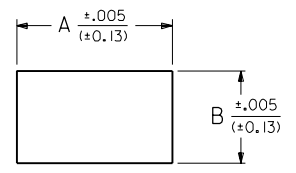
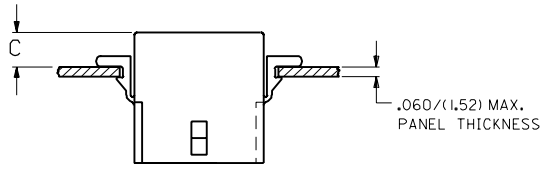


DETAIL 1
STANDARD MOUNTING EAR
SCALE 4:1

PLUG LEGEND:

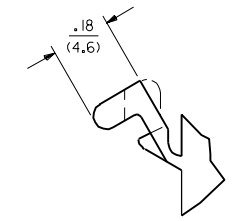
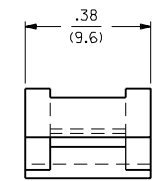
1625-15P***
 CIRCUIT SIZE
 P = PLUG
 BLANK = WITH MOUNTING EARS
 1 = WITHOUT EARS
 COLOR:
 BLANK = NATURAL COLOR
 AM = AMBER BK = BLACK BU = BLUE
 BN = BROWN GY = GRAY GN = GREEN
 OR = ORANGE RD = RED YW = YELLOW

COLOR:
 BLANK = NATURAL COLOR
 AM = AMBER BK = BLACK BU = BLUE
 BN = BROWN GY = GRAY GN = GREEN
 OR = ORANGE RD = RED YW = YELLOW



RECOMMENDED HOLE PATTERN

RECEP.	.930 (23.62)	.569 (14.45)	.22 (5.6)
PLUG	1.032 (26.21)	.620 (15.75)	.21 (5.3)
PART	DIM. A	DIM. B	DIM. C (PREBENT EAR)



DETAIL 2
.062 (1.57) PREBENT MOUNTING EAR
(SCALE 4:1)

NOTES:

- MATERIAL: NYLON TYPE 6/6, 94V-2.
- THIS PART COMPLIES WITH MOLEX PRODUCT SPEC. 02-06.
- THIS HOUSING FOR USE WITH .062 (1.57) DIA. TERMINALS.
- WHERE DENOTED IN CHART, TOOLS ARE BUILT WITH PREBENT MOUNTING EARS PER DETAIL 2 AND SUPERSEDE ALL TOOLS PREVIOUSLY BUILT WITH THE STANDARD MOUNTING EARS.
- CIRCUIT I.D. NUMBERS ON HOUSING APPEAR ON PART FROM TOOLS BUILT AFTER 1/15/94.

J
I
H
G
F
E
D
C
B
A

J
I
H
G
F
E
D
C
B
A

13 12 11 10 9 8 7 6 5 4 3 2 1

		N	SEE SHEET I	DIMENSIONS SHOWN (METRIC) INCH	▽ = 0	▽ = 0	REVISE ONLY ON CAD SYSTEM
		M	SEE SHEET I	UNLESS OTHERWISE SPECIFIED TOLERANCES ANGULAR ± .004	TITLE		
		L	SEE SHEET I	INCH METRIC	.062 (1.57) HOUSING; PLUG AND RECEPTACLE; 15 CKT. .145 (3.68) CTRS		
Q2	SEE SHEET I	KI	SEE SHEET I	3 PLACE ± .010 ---	MOLEX INCORPORATED SHEET NO. DATE		
Q1	SEE SHEET I	K	SEE SHEET I	2 PLACE ± .014 ± 0.25	L15LEJLL. 60532 U.S.A. 3 7/18/88		
Q	SEE SHEET I	J	SEE SHEET I	1 PLACE --- ± 0.35	PART NO. DRWG. NO.		
0	SEE SHEET I	H	SEE SHEET I	DRAFT WHERE APPLICABLE MUST REMAIN WITHIN DIMENSIONS	SEE CHART SD-1625-15*		
LTR.	REVISIONS	LTR.	REVISIONS	DRWG. BY: CEP	CHK'D. BY: RW	FILE NAME: S162515X3	
				APP'D. BY: RAS	SCALE: 2:1	THIS DRAWING CONTAINS INFORMATION THAT IS PROPRIETARY TO MOLEX INC. AND SHOULD NOT BE USED WITHOUT WRITTEN PERMISSION	

A
CP C