

Distributed by:



www.Jameco.com ♦ 1-800-831-4242

The content and copyrights of the attached material are the property of its owner.

Jameco Part Number 230084

The subject products should meet the following requirements when tested under the condition of involving all circuits with terminals crimped on the specified maximum size wire.

1. Electrical Performance

	Item	Test Condition	Requirement
1-1	Rated voltage and current		1~15 CKTS. AC&DC 250V 5A
			24 CKTS. AC&DC 250V 4A
1-2	Contact resistance	Mate connectors measure by Dry Circuit, 20mV max., 10mA.	10 mΩ max.
1-3	Dielectric strength	When applied AC 1500V 1 minute between adjacent terminals or ground	No breakdown
1-4	Insulation resistance	When applied DC 500V between adjacent terminals or ground	1000 MΩ min.

2. Mechanical Performance

	Item	Test Condition	Requirement
2-1	Insertion force	Mating speed : 25±3mm/minute	See para 7
2-2	Extraction force	Disengaging speed : 25±3mm/minute	See para 7
2-3	Durability	When mated up to 30 cycles by the rate of 10 cycles per minute	Contact resistance 20 mΩ max.
			Insertion extraction force See para 7
2-4	Terminal retention force	Pull speed : 25±3mm/minute	7.0 kg min.
2-5	Terminal strength	When applied a load of 500gw, 1 minute	No damage

3. Environmental Performance

	Item	Test Condition	Requirement
3-1	Temperature rise	When carried the rated current	30 °C max.
3-2	Vibration	1.5mm,10-55-10Hz/min.,each 2 hrs. for X,Y&Z directions, applying 1mA-DC current	Contact resistance 20 mΩ max.
			Discontinuity 1 μsec. max.
			Appearance No damage
3-3	Shock	50G,each 3 times for X,Y,Z directions, applying 1mA-DC current	Discontinuity 1 μsec. max.
			Appearance No damage

REV. B

Item	Test Condition	Requirement	
3-4 Solderability	Soldering time : 3 ± 0.5 sec. Soldering pot : 230 ± 5 °C	Min. 3/4 of immersed area	
3-5 Resistance to soldering heat	Soldering time : 5 ± 0.5 sec. Soldering pot : 260 ± 5 °C	No damage	
3-6 Heat resistance	85 ± 2°C, 96 hours	Contact resistance	20 mΩ max.
		Appearance	No damage
3-7 Humidity	Temperature : 40±2°C Relative Humidity: 90~95% Duration : 96 hours Measurement must be taken within 30 minute after tested	Contact resistance	20 mΩ max.
		Dielectric strength	To pass para 1-3
		Insulation resistance	100 MΩ min.
		Appearance	No damage
3-8 Temperature cycling (5 cycles)	One cycle consists of (1) -55±3°C, 30 minute (2) Room temp. 10~15 minute (3) 105±2°C, 30 minute (4) Room temp. 10~15 minute	Contact resistance	20 mΩ max.
		Appearance	No damage
3-9 Salt Spray	Temperature: 35±2°C Solution : 5±1% Spray time : 48±4 hours Measurement must be taken after water rinse.	Contact resistance	20 mΩ max.
		Appearance	No significant corrosion
3-10 SO ₂ Gas	24 hours in sulfur dioxide gas (SO ₂) 50±5ppm at 40±2°C	Contact resistance	20 mΩ max.

4. Terminal To Be Used

	Customer P/No.	Molex P/No.	Wire Size	Insulation Dia.
1.		1560,1561	AWG #18 ~ #24	φ (1.5) ~ 3.1
2.		1854,1855	AWG #22 ~ #28	φ (1.1) ~ 1.5
3.		1778,1779	-----	-----
4.				

5. Ambient Temperature Range : -40°C ~ 105°C

6. Construction, Dimension and Material : Specified by the attached drawing.

REV. B

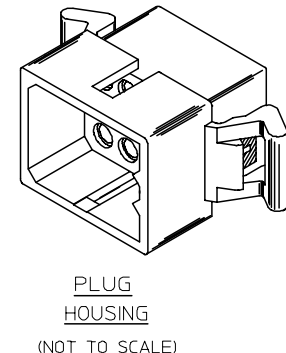
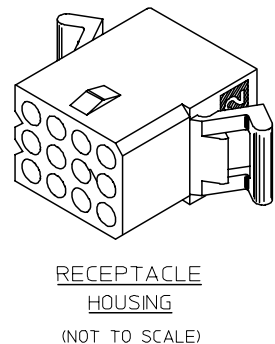
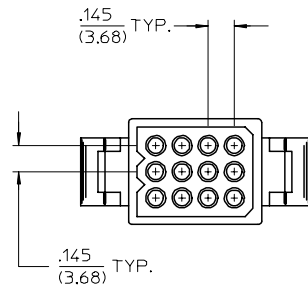
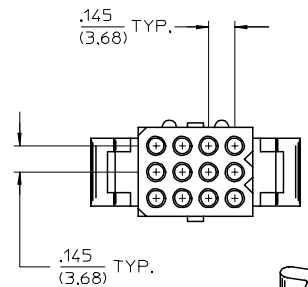
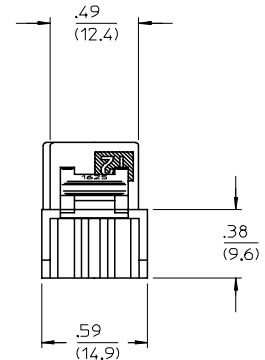
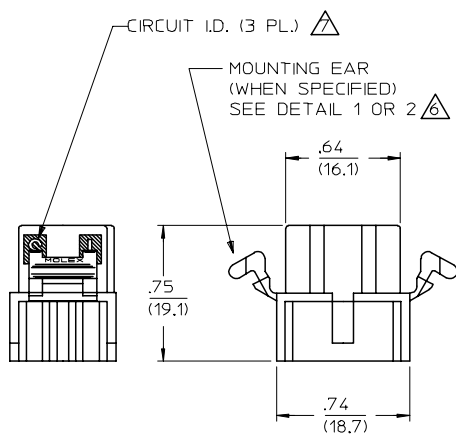
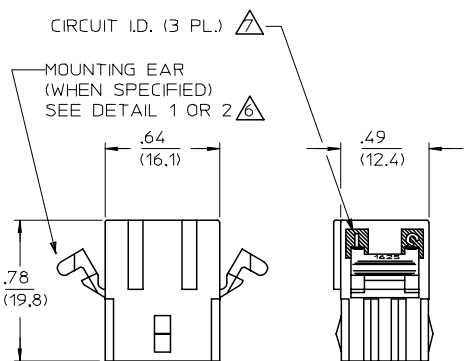
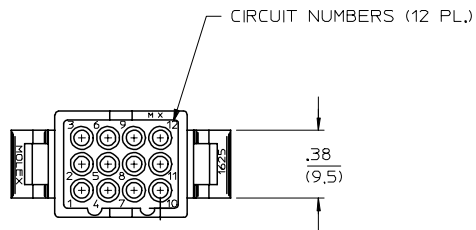
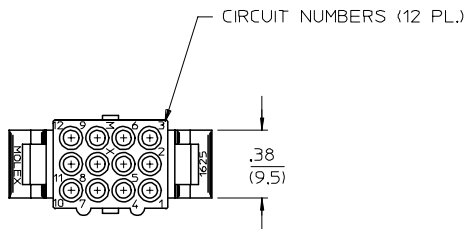
7. Insertion and Extraction Force

No of Ckt.	Insertion Force (kgf, max.)			Extraction Force (kgf, min.)		
	1st	6th	30th	1st	6th	30th
1	5.0	4.5	4.5	0.8	0.5	0.5
2	7.0	6.0	6.0	1.5	1.0	1.0
3	10.0	9.0	8.0	1.8	1.2	1.2
4	13.0	12.0	10.0	2.0	1.4	1.4
5	15.5	14.0	11.0	2.3	1.5	1.5
6	18.0	16.0	12.0	2.5	1.6	1.6
9	26.0	23.0	17.0	3.5	2.5	2.5
12	34.0	30.0	23.0	4.5	3.5	3.5
15	40.0	35.0	30.0	5.5	4.5	4.5
24	60.0	55.0	50.0	6.5	5.5	5.5

REV. B

J
I
H
G
F
E
D
C
B
A

J
I
H
G
F
E
D
C
B
A



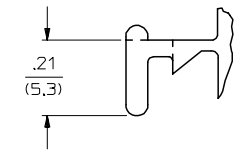
TRANSLATED TO S.D. EC NO: UCP2004-2551 DRAWN:RHOLTS 2004/12/03 CHKD:FSMTH 2004/12/03 APPR:FSMTH 2004/12/06	DESCRIPTION	QUALITY SYMBOLS	GENERAL TOLERANCES (UNLESS SPECIFIED)		SCALE	DESIGN UNITS	THIRD ANGLE PROJECTION		REVISE ON CAD ONLY			
		▽-0 ◻-0	m	INCH	1:1	INCH	TITLE					
			DIMENSION STYLE		DRAWN BY		DATE		.062/(1.57) HOUSINGS, PLUG & RECEPTACLE 12 CKT, 145 CENTERS MOLEX INCORPORATED			
			IN/MM		GWC		1993/02/01					
DRAFT WHERE APPLICABLE		MUST REMAIN WITHIN DIMENSIONS		CHECKED BY		DATE		MATERIAL NO.	DOCUMENT NO.	SHEET NO.		
				RW		1993/02/01		SEE CHART	SD-1625-12*	1 OF 2		
THIS DRAWING CONTAINS INFORMATION THAT IS PROPRIETARY TO MOLEX INCORPORATED AND SHOULD NOT BE USED WITHOUT WRITTEN PERMISSION												

PLUG	
PART NO.	ENG. NO.
03-06-2121	1625-12P
03-06-7121	1625-12PBK
03-06-2122	1625-12P1
03-06-7122	1625-12P1BK

RECEPTACLE	
PART NO.	ENG. NO.
03-06-1121	1625-12R
03-06-6121	1625-12RBK
03-06-1122	1625-12R1
03-06-6122	1625-12R1BK
	OBSOLETE

RECEPTACLE LEGEND

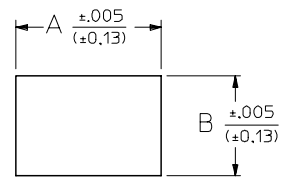
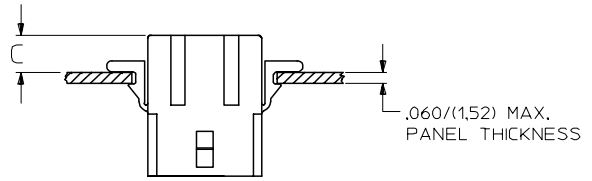
1625-12R***
 CIRCUIT SIZE
 R = RECEPTACLE
 BLANK = WITH PREBENT MOUNTING EARS
 1 = WITHOUT EARS
 COLOR:
 BLANK = NATURAL COLOR
 AM = AMBER BK = BLACK BU = BLUE
 BN = BROWN GY = GRAY GN = GREEN
 OR = ORANGERD = RED YW = YELLOW



DETAIL 1
 STANDARD MOUNTING EAR
 SCALE 4:1

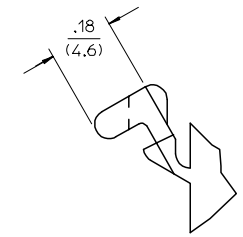
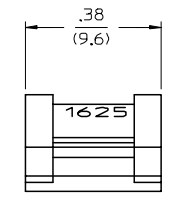
PLUG LEGEND

1625-12P***
 CIRCUIT SIZE
 P = PLUG
 BLANK = WITH PREBENT EARS
 1 = WITHOUT EARS
 COLOR:
 BLANK = NATURAL COLOR
 AM = AMBER BK = BLACK BU = BLUE
 BN = BROWN GY = GRAY GN = GREEN
 OR = ORANGE RD = RED YW = YELLOW



RECOMMENDED HOLE PATTERN

RECEP.	.795 (20.19)	.563 (14.30)		.23 (5.8)
PLUG	.903 (22.94)	.614 (15.60)	.21 (5.3)	.22 (5.5)
PART	DIM. A	DIM. B	DIM. C (STANDARD EAR)	DIM. C (PREBENT EAR)



DETAIL 2
 .062/(1.57) PREBENT MOUNTING EAR
 SCALE 4:1

NOTES:

1. MATERIAL: NYLON TYPE 6/6, 94V-2.
 2. FINISH: NONE
 3. PRODUCT SPECIFICATION: PS-02-06
 4. PACKAGING INFORMATION: PK-1625-001
 5. THIS HOUSING FOR USE WITH .062/(1.57) DIA. TERMINALS.
- WHERE DENOTED IN CHART, TOOLS ARE BUILT WITH PREBENT MOUNTING EARS PER DETAIL 2 AND SUPERSEDE ALL TOOLS PREVIOUSLY BUILT WITH THE STANDARD MOUNTING EARS.
- CIRCUIT ID. NUMBERS APPEAR ON PARTS FROM TOOLS BUILT AFTER 2/1/93.

TRANSLATED TO SD. ELC NO: UCP2004-2551 DRAWN: RHOLTS 2004/12/03 CHKD: FSMITH 2004/12/03 APPR: FSMITH 2004/12/06	QUALITY SYMBOLS -0 -0	GENERAL TOLERANCES (UNLESS SPECIFIED) 4 PLACES ± --- ± --- 3 PLACES ± --- ± .010 2 PLACES ± 0.25 ± .014 1 PLACE ± 0.36 ± --- ANGULAR ± 1 °	SCALE 1:1 DESIGN UNITS INCH DIMENSION STYLE IN/MM DRAWN BY DATE GWC 1993/02/01 CHECKED BY DATE RW 1993/02/01 APPROVED BY DATE RAS 1993/02/01	THIRD ANGLE PROJECTION REVISE ON CAD ONLY TITLE .062/(1.57) HOUSINGS, PLUG & RECEPTACLE 12 CKT, 145 CENTERS MOLEX INCORPORATED MATERIAL NO. SEE CHART DOCUMENT NO. SD-1625-12* SHEET NO. 2 OF 2
	DRAFT WHERE APPLICABLE MUST REMAIN WITHIN DIMENSIONS			THIS DRAWING CONTAINS INFORMATION THAT IS PROPRIETARY TO MOLEX INCORPORATED AND SHOULD NOT BE USED WITHOUT WRITTEN PERMISSION

