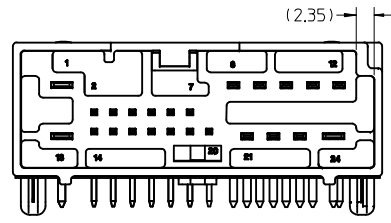
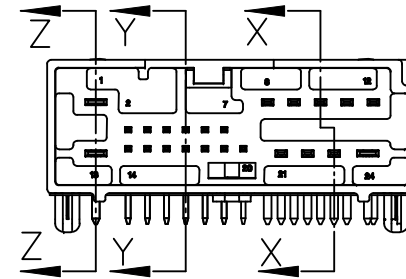


NOTES:

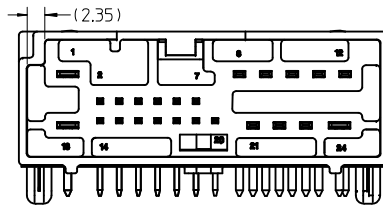
- MATERIAL: HOUSING: SPS GLASS FILLED, COLOR: SEE CHART. TERMINAL: COPPER ALLOY C26000. PIN ALIGNMENT PLATE: MYLAR, COLOR: NATURAL (WHITE).
- FINISHES: TERMINAL: TIN (Sn) OVERALL, NICKEL (Ni) UNDERPLATE OVERALL.
- PACKAGING SPECIFICATION : TRAY: PK-30907-261, TUBE: PK-30907-226.
- MATES WITH: SERIES 30700, SEE SALES DRAWING SD-30700-124.
- DATECODE DESCRIPTION:
 - 1ST DIGIT: MACHINE ID# (ALWAYS WILL BE '2')
 - 2ND THROUGH 4TH DIGIT: DAY# OF THE CALENDAR YEAR (EXAMPLE: FEB. 3RD = '034')
 - 5TH DIGIT: LAST DIGIT OF THE CALENDAR YEAR (EXAMPLE: 1999 = '9')
 - 6TH THROUGH 7TH DIGIT: HOUR OF THE DAY.
- RECOMMENDED OPTIONAL SCREW: M2 x 0.89, 6mm IN LENGTH, PAN COLLAR HEAD, 6 LOBE. TORQUE: 7 NEWTON CENTIMETERS

ENTER DESCRIPTION EC NO: JAU2014-1988 DRWN: FISCHER01 2014/06/26 CHKD: APPR: RBAUMAN 2014/07/02	QUALITY SYMBOLS ▽=0 ▽=0	GENERAL TOLERANCES (UNLESS SPECIFIED)		DIMENSION STYLE MM ONLY	SCALE 2:1	DESIGN UNITS METRIC	THIRD ANGLE PROJECTION	
		mm	INCH	DRAWN BY RCARLSON	DATE 01/04/03	TITLE 24 CKT HEADER ASSEMBLY RIGHT ANGLE SALES DRAWING		
		4 PLACES ± --- ± ---	3 PLACES ± --- ± ---	CHECKED BY CKRISHNA	DATE 01/04/24	MATERIAL NO. 9999999999		
		2 PLACES ± 0.13 ± ---	1 PLACE ± 0.25 ± ---	APPROVED BY LGEIB	DATE 01/04/24	DOCUMENT NO. SD-30700-524		
ANGULAR ± 1 °		DRAFT WHERE APPLICABLE MUST REMAIN WITHIN DIMENSIONS		SIZE C	THIS DRAWING CONTAINS INFORMATION THAT IS PROPRIETARY TO MOLEX INCORPORATED AND SHOULD NOT BE USED WITHOUT WRITTEN PERMISSION			
						SHEET NO. 1 OF 2		

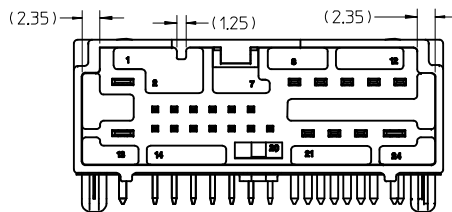
PACKAGING		POLARIZATION OPTIONS & COLOR		
ASSEMBLY P/N TRAY PACKED	ASSEMBLY P/N TUBE PACKED	RIGHT ANGLE HEADER ASSEMBLY (POLARIZATION OPTIONS)	HOUSING COLOR	TOOLED
30700-5240	30700-5244	POLARIZATION OPTION 'A'	GRAY	YES
30700-5241	30700-5245	POLARIZATION OPTION 'B'	BLACK	YES
30700-5242	30700-5246	POLARIZATION OPTION 'C'	NATURAL	NO



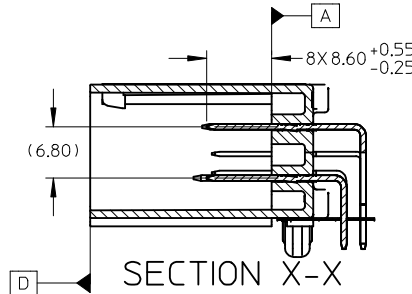
30700-5240/30700-5244
POLARIZATION 'A'



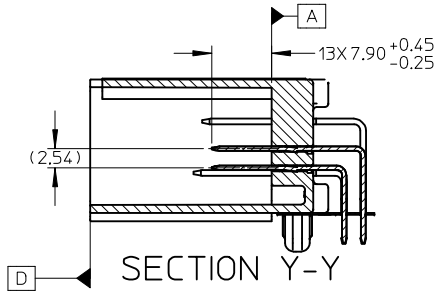
30700-5241/30700-5245
POLARIZATION 'B'



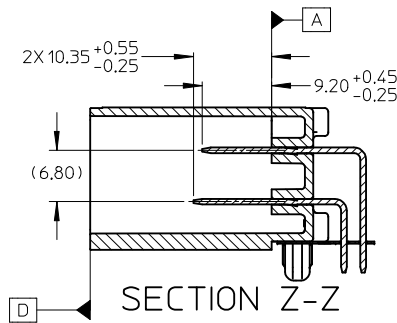
30700-5242/30700-5246
POLARIZATION 'C'



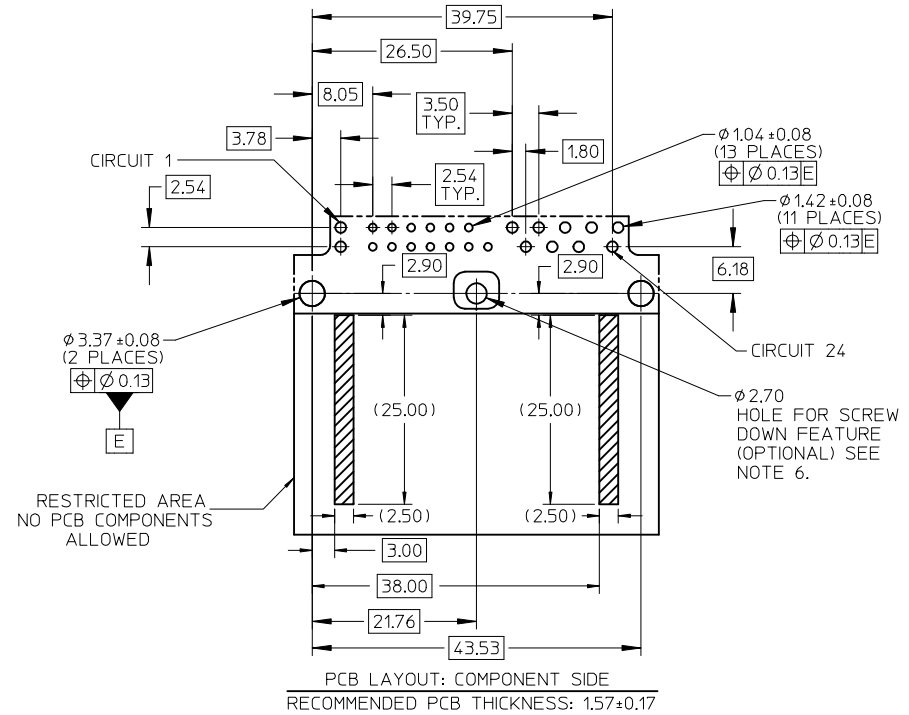
SECTION X-X



SECTION Y-Y



SECTION Z-Z



ENTER DESCRIPTION EC NO: UAU2014-1986 DRWN: FJ SCHER01 2014/06/26 CHKD: APPR: RBAUMAN 2014/07/02 REV: T1	QUALITY SYMBOLS $\blacktriangledown = 0$ $\nabla = 0$	GENERAL TOLERANCES (UNLESS SPECIFIED) <table border="1"> <thead> <tr> <th></th> <th>mm</th> <th>INCH</th> </tr> </thead> <tbody> <tr> <td>4 PLACES</td> <td>\pm ---</td> <td>\pm ---</td> </tr> <tr> <td>3 PLACES</td> <td>\pm ---</td> <td>\pm ---</td> </tr> <tr> <td>2 PLACES</td> <td>± 0.13</td> <td>\pm ---</td> </tr> <tr> <td>1 PLACE</td> <td>± 0.25</td> <td>\pm ---</td> </tr> </tbody> </table>		mm	INCH	4 PLACES	\pm ---	\pm ---	3 PLACES	\pm ---	\pm ---	2 PLACES	± 0.13	\pm ---	1 PLACE	± 0.25	\pm ---	DIMENSION STYLE MM ONLY DRAWN BY: R CARLSON DATE: 01/04/03 CHECKED BY: CKRISHNA DATE: 01/04/24 APPROVED BY: LGEIB DATE: 01/04/24	SCALE 2:1 DESIGN UNITS METRIC THIRD ANGLE PROJECTION	TITLE 24 CKT HEADER ASSEMBLY RIGHT ANGLE SALES DRAWING
		mm	INCH																	
	4 PLACES	\pm ---	\pm ---																	
	3 PLACES	\pm ---	\pm ---																	
2 PLACES	± 0.13	\pm ---																		
1 PLACE	± 0.25	\pm ---																		
DRAFT WHERE APPLICABLE MUST REMAIN WITHIN DIMENSIONS	MATERIAL NO. 9999999999	DOCUMENT NO. SD-30700-524	SHEET NO. 2 OF 2	MOLEX INCORPORATED																
THIS DRAWING CONTAINS INFORMATION THAT IS PROPRIETARY TO MOLEX INCORPORATED AND SHOULD NOT BE USED WITHOUT WRITTEN PERMISSION																				