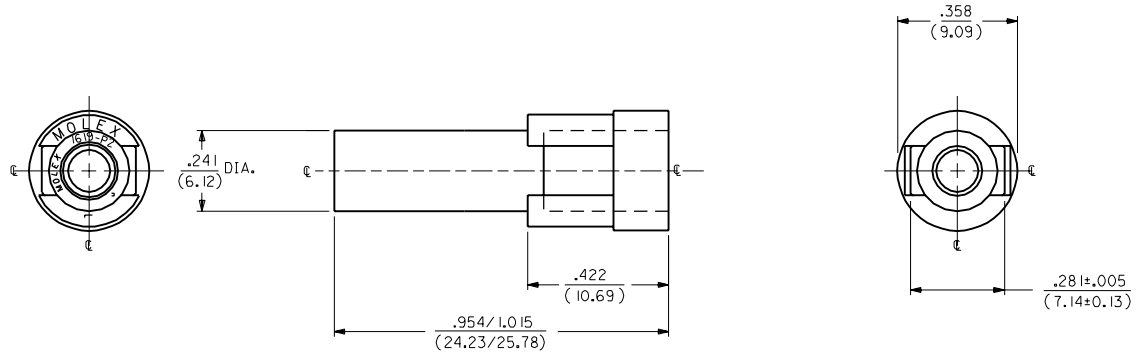


ORDER NO.	ENG. NO.	OLD ENG. NO.
03-09-2011	1619-IP1A5M1A	1619-P
03-09-7011	1619-IP1A5M1B	1619-P-D
03-09-7012	1619-IP1A5M1G	-----
03-09-7013	1619-IP1A5M1H	-----



ENGINEERING NUMBER SYSTEM

1619-IP1A5M1\*

NOTES:

1. THIS HOUSING IS FOR USE WITH THE .093/(2.36) DIA. TERMINALS.
2. PRODUCT SPEC. 02-09 APPLIES.
3. MATERIAL: NYLON 66, 94V-2

- COLOR
- |            |           |
|------------|-----------|
| A) NATURAL | F) GRAY   |
| B) BLACK   | G) RED    |
| C) AMBER   | H) BLUE   |
| D) BROWN   | J) GREEN  |
| E) ORANGE  | K) YELLOW |

3	W2		
2	W2		
1	W2	W2	REDRAWN ON CAD ECN: U81151 WANG 37-11-12
MM#	SH.	REV.	LTR.
			REVISIONS

DIMENSIONS SHOWN METRIC (INCH) UNLESS OTHERWISE SPECIFIED TOLERANCES: ANGULAR ± 1/2°

	INCH	METRIC
3 PLACE	± .010	---
2 PLACE	± .014	± 0.25
1 PLACE	---	± 0.35

DRAFT WHERE APPLICABLE MUST REMAIN WITHIN DIMENSIONS

MOLEX INCORPORATED  
LITSEJLL 60532 U.S.A.

TITLE: HOUSING, PLUG .093/(2.36) DIAMETER

SHEET NO. 1 OF 1 DATE 11/12/97

PART NO. 09-0000 DRWG. NO. SD-1619-IP\*

DRWG. BY: WANG CHKD. BY: RW FILE NAME: SP1619X1.DWG

APP'D. BY: RE SCALE: 4 : 1

THIS DRAWING CONTAINS INFORMATION THAT IS PROPRIETARY TO MOLEX INC. AND SHOULD NOT BE USED WITHOUT WRITTEN PERMISSION.

SIZE: CP C