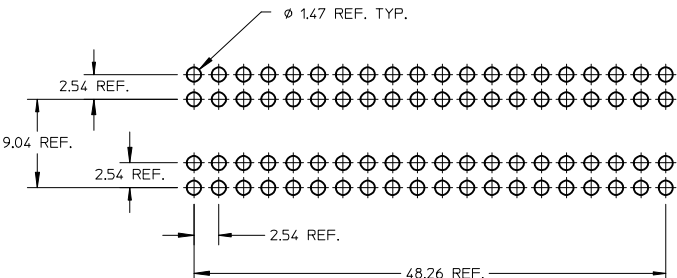
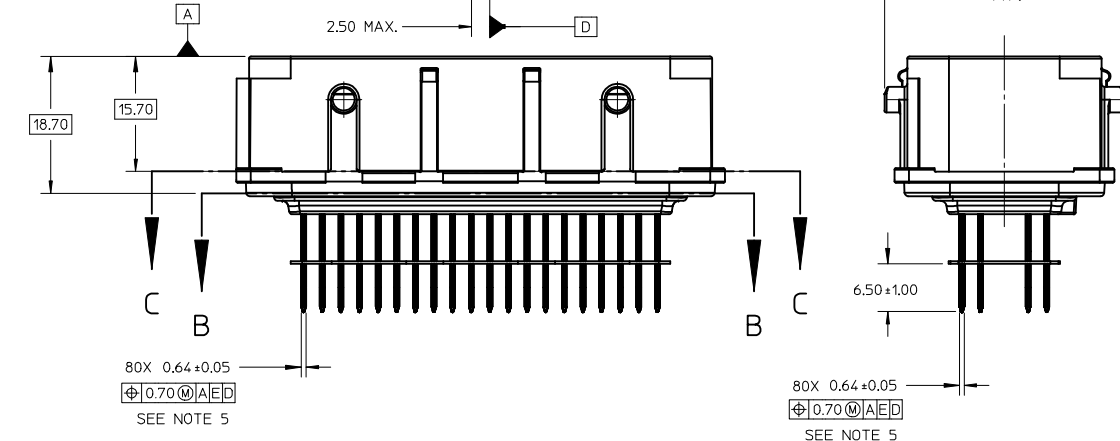
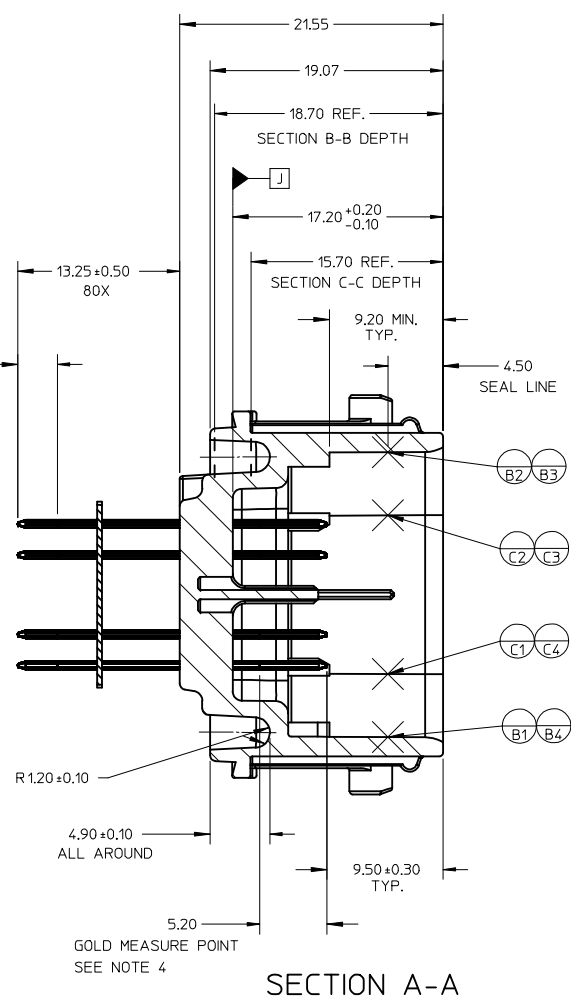
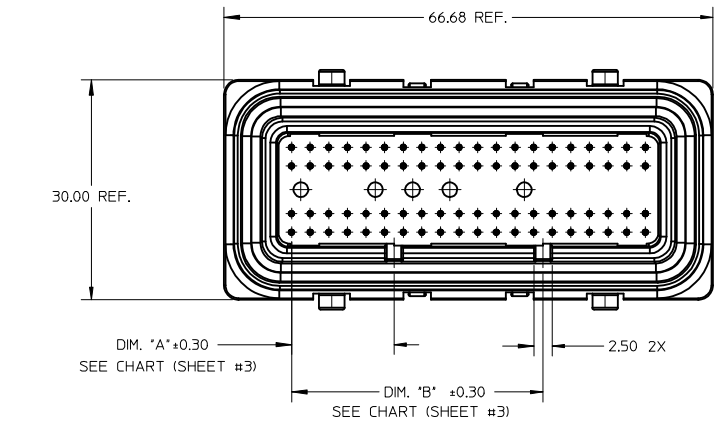
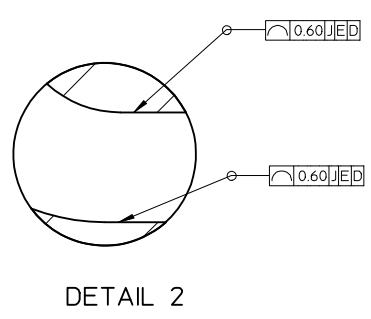
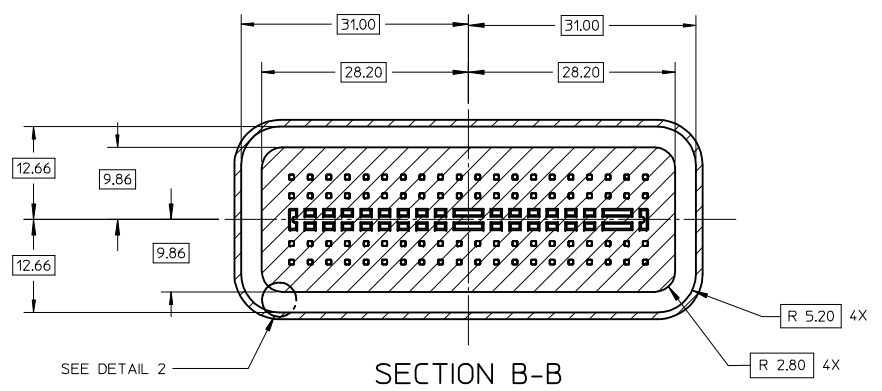
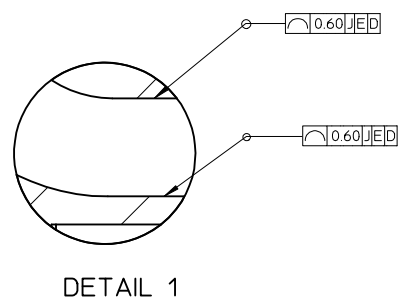
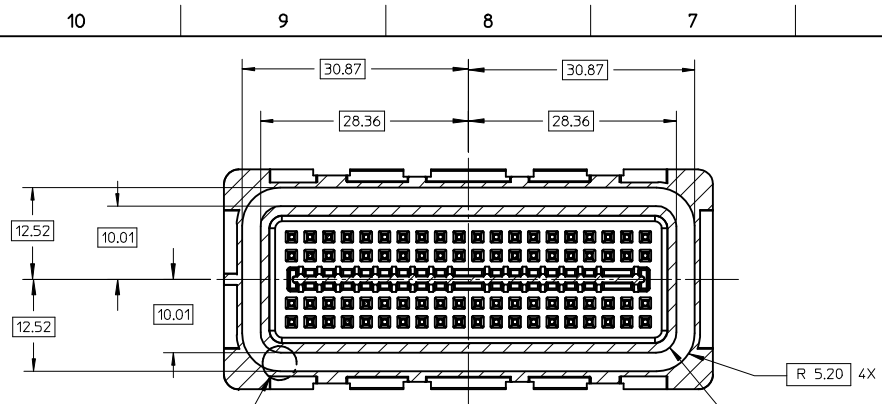


- NOTES:
- DIMENSIONS AND TOLERANCES ARE VALID FOR THE AS SHIPPED SHROUD ASSEMBLY
 - SEE ASME Y14.5-1994 FOR GD&T INTERPRETATION
 - RESIN MATERIAL: 30%GF PBT, SEE CHART FOR COLOR AND KEYING OPTIONS
 - MEASUREMENT POINT FOR SIGNAL PIN PLATING:
UNDERPLATE: NICKEL 1.27-2.54 μm
SELECT GOLD: 0.76 μm MIN.
SELECT TIN: 5.08-10.16 μm BRIGHT FINISH
PIN SOLDERABILITY PER SMES-152
 - ALL PIN TRUE POSITION FUNCTIONALLY CHECKED BY ON-LINE GAUGING
 - FOR ALL HARNESS INTERFACE DIMENSIONS AND TOLERANCES REFERENCE MOLEX DRAWINGS: SD-34565-001 (MX123 73/80 CKT. WIRE DRESS COVER)
SD-34566-001 (MX123 73/80 CKT. HARNESS CONNECTOR)
SD-33468-001 (MX64 RECEPTACLE TERMINAL)
 - NOTE: ASSEMBLY SHALL NOT EXCEED 125°C DURING POST PROCESSING OR DURING THE ATTACHMENT PROCESS
 - ADHESIVE FOR ATTACHMENT: AS A GENERAL GUIDELINE MOLEX USES SILICONE BASED ADHESIVES AS AN ATTACHMENT METHOD TO CREATE A PERMANENT ADHESIVE BOND BETWEEN THE SHROUD AND AN ALUMINUM DIE-CASTING
 - PACKAGING PER MOLEX PK-31300-840
 - REFER TO THE MX123 USER MANUAL @ <http://www.molex.com/ind/mx123.html>

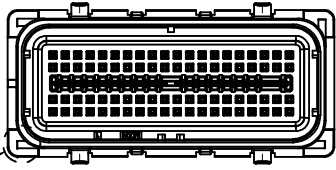


| | | | | | | | | | | |
|--|--------------------------------------|---|---------|-----------------------------------|------------------|---|------------------------|------------------------|--------------------------|--|
| ENTER DESCRIPTION EC NO: UAU2009-1301 DRAWN BY: DRW:JDFENCL 2009/07/22 CHK'D: JAKLIC 2009/07/22 APPR: GPRATT 2009/07/24 DESCRIPTION: A | QUALITY SYMBOLS ▽=0 ▽=0 | GENERAL TOLERANCES (UNLESS SPECIFIED) | | DIMENSION STYLE MM ONLY | | SCALE 1.5:1 | DESIGN UNITS METRIC | THIRD ANGLE PROJECTION | | |
| | | 4 PLACES ± --- ± --- 3 PLACES ± --- ± --- 2 PLACES ± 0.13 ± --- 1 PLACE ± 0.25 ± --- | mm INCH | DRAWN BY FJAKLIC | DATE 04/30/08 | TITLE 80 CKT SHROUD ASSEMBLY 0.64 SQ. PINS MX123 | | | | |
| | | ANGULAR ± 1° | | CHECKED BY FJAKLIC | DATE 04/30/08 | APPROVED BY GPRATT | | DATE 05/05/08 | MOLEX MOLEX INCORPORATED | |
| | | DRAFT WHERE APPLICABLE MUST REMAIN WITHIN DIMENSIONS | | MATERIAL NO. SEE CHART | | DOCUMENT NO. SD-31387-080 | SHEET NO. 1 OF 3 | | | |



| | | | | | | | | | | |
|--|--------------------------------------|--|---------|-----------------------------------|------------|--------------|---|---|-----------|--|
| ENTER DESCRIPTION EC NO: UAU2009-1301 DRAWN: FENCL 2009/07/22 CHKD: FJAKLIC 2009/07/22 APPR: GPRATT 2009/07/24 A | QUALITY SYMBOLS ▽=0 ▽=0 | GENERAL TOLERANCES (UNLESS SPECIFIED) | | DIMENSION STYLE MM ONLY | | SCALE 1:1 | DESIGN UNITS METRIC | THIRD ANGLE PROJECTION | | |
| | | 4 PLACES | ± --- | ± --- | DRAWN BY | DATE | TITLE 80 CKT SHROUD ASSEMBLY 0.64 SQ. PINS MX123 | | | |
| | | 3 PLACES | ± --- | ± --- | FJAKLIC | 04/30/08 | | | | |
| | | 2 PLACES | ± 0.13 | ± --- | CHECKED BY | DATE | MOLEX INCORPORATED | | | |
| 1 PLACE | ± 0.25 | ± --- | FJAKLIC | 04/30/08 | | | | | | |
| ANGULAR ± 1° | | DRAFT WHERE APPLICABLE MUST REMAIN WITHIN DIMENSIONS | | APPROVED BY | | DATE | DOCUMENT NO. | | | |
| | | | | GPRATT | | 05/05/08 | SD-31387-080 | | SHEET NO. | |
| | | | | MATERIAL NO. | | | | 2 OF 3 | | |
| | | | | SEE CHART | | | | THIS DRAWING CONTAINS INFORMATION THAT IS PROPRIETARY TO MOLEX INCORPORATED AND SHOULD NOT BE USED WITHOUT WRITTEN PERMISSION | | |
| | | | | SIZE B | | | | | | |

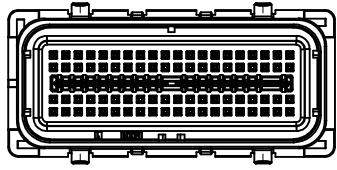
| SHROUD ASSEMBLY NUMBER | COLOR | HARNESS SIDE KEY CODE | PCB SIDE KEY LOCATION | | MATING HARNESS PART NUMBER |
|------------------------|-------|-----------------------|---------------------------|---------------------------|----------------------------|
| | | | DIM. "A" (SEE SHEET 2) | DIM. "B" (SEE SHEET 2) | |
| 31387-4001 | BLUE | G | 13.97 | 34.29 | 345660703 |
| 31387-4009 | GRAY | H | 24.13 | 39.37 | 345660803 |



MATE SIDE
POLARIZATION KEY
AT CORNERS

MOLEX P/N 31387-4001
KEY OPTION "G"
COLOR: BLUE

SEE CHART FOR PART NUMBER
OF MATING HARNESS CONNECTOR



MOLEX P/N 31387-4009
KEY OPTION "H"
COLOR: GRAY

SEE CHART FOR PART NUMBER
OF MATING HARNESS CONNECTOR

| | | | | | | | | | | |
|---|--------------------------------|---------------------------------------|--|----------------------------|-----------------------|------------------|---|---|--|---------------------|
| ENTER DESCRIPTION EC NO: UAU2009-1301 DRW:DFENC 2009/07/22 CHK:DFJAKLIC 2009/07/22 APPR:GPRATT 2009/07/24 | QUALITY SYMBOLS ▽=0 ▽7=0 | GENERAL TOLERANCES (UNLESS SPECIFIED) | | DIMENSION STYLE MM ONLY | | SCALE 1:1 | DESIGN UNITS METRIC | THIRD ANGLE PROJECTION | | |
| | | | mm | INCH | DRAWN BY FJAKLIC | DATE 04/30/08 | TITLE 80 CKT SHROUD ASSEMBLY 0.64 SQ. PINS MX123 | | | |
| | | 4 PLACES | ± --- | ± --- | CHECKED BY FJAKLIC | DATE 04/30/08 | | | | |
| | | 3 PLACES | ± --- | ± --- | APPROVED BY GPRATT | | DATE 05/05/08 | MOLEX INCORPORATED DOCUMENT NO. SD-31387-080 | | SHEET NO. 3 OF 3 |
| 2 PLACES | ± 0.13 | ± --- | MATERIAL NO. | | SEE CHART | | | | | |
| 1 PLACE | ± 0.25 | ± --- | DRAFT WHERE APPLICABLE MUST REMAIN WITHIN DIMENSIONS | | SIZE B | | THIS DRAWING CONTAINS INFORMATION THAT IS PROPRIETARY TO MOLEX INCORPORATED AND SHOULD NOT BE USED WITHOUT WRITTEN PERMISSION | | | |