

NOTES: UNLESS OTHERWISE SPECIFIED

1. MATERIAL:

- A. RESIN:
 - 1. NYLON BLEND
 - 2. COLOR: STONE GREY

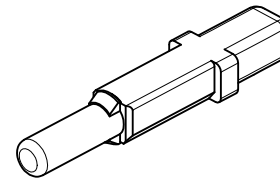
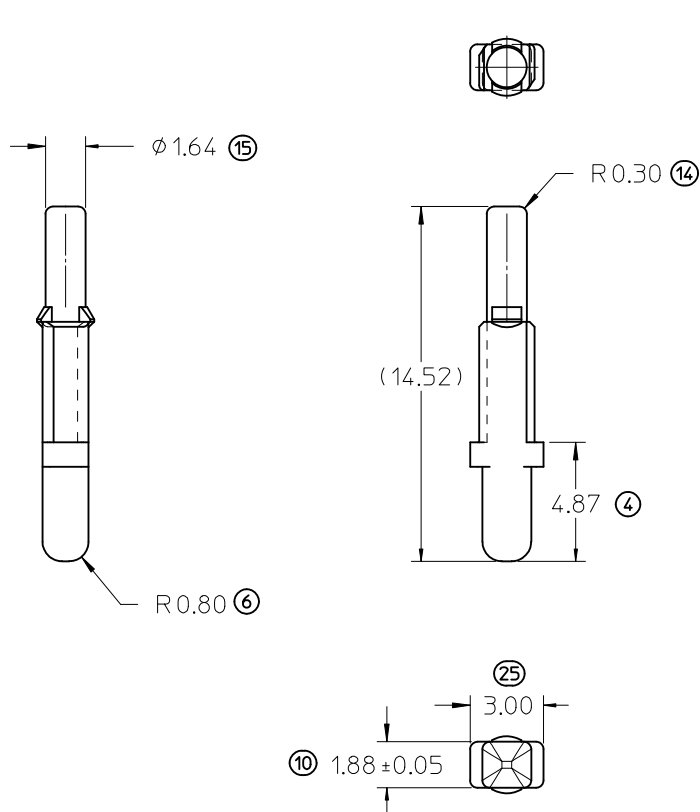
2. DESIGN - GENERAL:

- A. THIS IS A 100% CAD GENERATED PART. THE CAD MATHEMATICAL DATA IS THE MASTER FOR THIS PART. FOR DIMENSIONAL OR ANY SPECIAL TOOLING INFORMATION NOT SHOWN ON THIS DRAWING, ANALYZE THE CAD MODEL.
- B. TOLERANCES:
 - a. LINEAR
 - 0.X ± 0.30
 - 0.XX ± 0.10
 - 0.XXX ± 0.10
 - b. ANGULAR X° ± 3°
 - c. 0.2 A B C

3. SYSTEM REQUIREMENTS:

- A. THIS GROMMET SEAL PLUG MATES TO ALL HRNS CONN ASSY PART NUMBERS IDENTIFIED IN MOLEX SD-34566-001 AND SD-34576-001
- B. WHEN TESTED TO SAE/USCAR-2 REV: 3, APRIL 2001, OR GMW #3191, AUGUST 22, 2000 (DRAFT).
 - 1. GMW #3191 AUGUST 22, 2000 (DRAFT); TEMPERATURE CLASS 3, SEALING CLASS 3, VIBRATION CLASS 2
 - 2. RESTRICTED AND REPORTABLE CHEMICALS PER GMW #3059, REV: D AUGUST 2002
 - 3. MX123 0.64 GROMMET SEAL PLUG USER FORCES
 - a. INSERTION FORCE INTO LOCK POSITION: <= 40N
 - b. REMOVAL FORCE FROM LOCK POSITION: >= 5N AND <= 40N

EC NO: UAU2012-0906 DRWN: BHU02 2012/02/08 CHKD: APPR: VKOSHY 2012/02/10 A4	QUALITY SYMBOLS	GENERAL TOLERANCES (UNLESS SPECIFIED)	SCALE 5:1	DESIGN UNITS METRIC	THIRD ANGLE PROJECTION	REVISE ON CAD ONLY
	DESCRIPTION ▽ = 0 ∇ = 0	mm INCH	DIMENSION STYLE MM ONLY	TITLE		
		4 PLACES ± --- ± ---	DRAWN BY JSZYMKOW	MX123		
		3 PLACES ± --- ± ---	DATE 2004/01/23	0.64 GROMMET SEAL PLUG		
2 PLACES ± --- ± ---	1 PLACE ± --- ± ---	CHECKED BY YLEPOTTI	MOLEX MOLEX INCORPORATED			
DATE 2004/01/23	APPROVED BY YLEPOTTI	DATE 2004/01/23	MATERIAL NO. 34586-0001	DOCUMENT NO. SD-34586-001	SHEET NO. 1 OF 1	
DRAFT WHERE APPLICABLE MUST REMAIN WITHIN DIMENSIONS		THIS DRAWING CONTAINS INFORMATION THAT IS PROPRIETARY TO MOLEX INCORPORATED AND SHOULD NOT BE USED WITHOUT WRITTEN PERMISSION				



NOTES: UNLESS OTHERWISE SPECIFIED

1. MATERIAL:

- A. RESIN:
 - 1. NYLON BLEND
 - 2. COLOR: STONE GREY

2. DESIGN - GENERAL:

- A. THIS IS A 100% CAD GENERATED PART. THE CAD MATHEMATICAL DATA IS THE MASTER FOR THIS PART. FOR DIMENSIONAL OR ANY SPECIAL TOOLING INFORMATION NOT SHOWN ON THIS DRAWING, ANALYZE THE CAD MODEL.
- B. TOLERANCES:
 - a. LINEAR
 - 0.X ± 0.30
 - 0.XX ± 0.10
 - 0.XXX ± 0.10
 - b. ANGULAR X° ± 3°
 - c. 0.2 AB

3. SYSTEM REQUIREMENTS:

- A. THIS GROMMET SEAL PLUG MATES TO ALL HRNS CONN ASSY PART NUMBERS IDENTIFIED IN MOLEX SD-34566-001 AND SD-34576-001
- B. WHEN TESTED TO SAE/USCAR-2 REV: 3, APRIL 2001, OR GMW #3191, AUGUST 22, 2000 (DRAFT).
 - 1. GMW #3191 AUGUST 22, 2000 (DRAFT); TEMPERATURE CLASS 3, SEALING CLASS 3, VIBRATION CLASS 2
 - 2. RESTRICTED AND REPORTABLE CHEMICALS PER GMW #3059, REV: D AUGUST 2002
 - 3. MX123 0.64 GROMMET SEAL PLUG USER FORCES
 - a. INSERTION FORCE INTO LOCK POSITION: <= 40N
 - b. REMOVAL FORCE FROM LOCK POSITION: >= 5N AND <= 40N

EC NO: UAU2012-0906 DRWN: BHU02 2012/02/08 CHKD: APPR: VKOSHY 2012/02/10 A4	QUALITY SYMBOLS	GENERAL TOLERANCES (UNLESS SPECIFIED)	SCALE 5:1	DESIGN UNITS METRIC	THIRD ANGLE PROJECTION	REVISE ON CAD ONLY
	DESCRIPTION ▽ = 0 ∇ = 0	mm INCH	DIMENSION STYLE MM ONLY	TITLE		
		4 PLACES ± --- ± ---	DRAWN BY JSZYMKOW	MX123		
		3 PLACES ± --- ± ---	DATE 2004/01/23	0.64 GROMMET SEAL PLUG		
2 PLACES ± --- ± ---	1 PLACE ± --- ± ---	ANGULAR ± --- °	CHECKED BY YLEPOTTI	DATE 2004/01/23	MOLEX MOLEX INCORPORATED	
DRAFT WHERE APPLICABLE MUST REMAIN WITHIN DIMENSIONS			APPROVED BY YLEPOTTI	DATE 2004/01/23	MATERIAL NO. 34586-0001	DOCUMENT NO. SD-34586-001
			THIS DRAWING CONTAINS INFORMATION THAT IS PROPRIETARY TO MOLEX INCORPORATED AND SHOULD NOT BE USED WITHOUT WRITTEN PERMISSION			
					SHEET NO. 1 OF 1	