

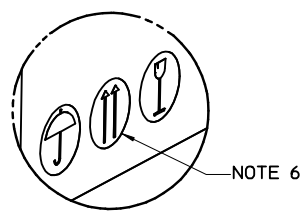
PRODUCT ID LABEL  
(1) PER REEL

SEE DETAIL 1

SHIPPER ID LABEL  
(1-2)/CARTON AS REQUIRED

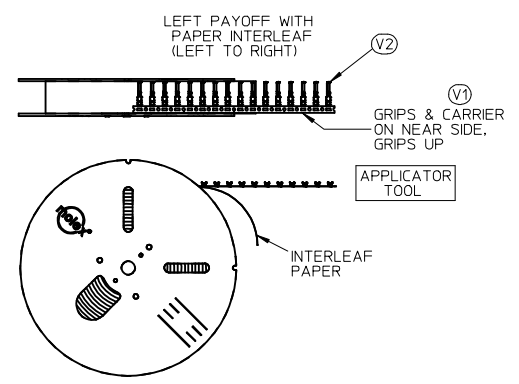
PALLET 0313016630  
635 mm X 635 mm  
(26" X 26")  
(SEE NOTE 6)

CUSTOMER COPY



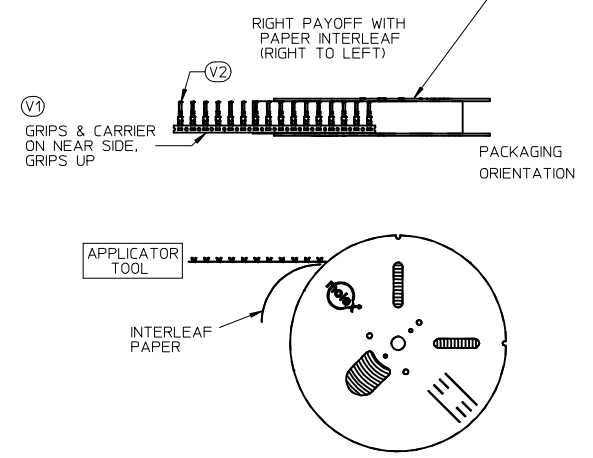
DETAIL 1  
SCALE 1:1.33

**PAYOFF  
DIRECTION D**



PLACE PRODUCT ID LABEL ON THIS SIDE TO INDICATE  
THE PREFERRED PACKAGING ORIENTATION

**PAYOFF  
DIRECTION B**

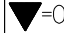
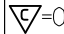


- NOTES:
1. NUMBER OF TERMINALS PER REEL: SEE TABLE (SHEET 2)
  2. STANDARD PACK QUANTITY (SPQ): SEE TABLE (SHEET 2)
  3. NUMBER OF REELS PER CARTON: SEE TABLE (SHEET 2)
  4. SPLICING: NO BREAKS, MAXIMUM 1 WELD PER REEL
  5. TO MINIMIZE STRESS ON TERMINALS, REELS SHOULD ALWAYS BE SHIPPED ON PALLETS WITH THE REELS LAYING FLAT AS SHOWN.
  6. PLACE CARTONS ON PALLET WITH ARROWS POINTING UP PER DETAIL 1
  7. FOR INTERNAL COPY SEE: PK-31301-053

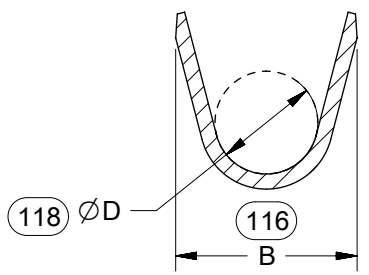
SPO CORRECTION EC NO: UAU2015-0955 DRAWN: PHELPS 2014/12/19 CHKD: APPR: JNORTHRO 2015/01/26 REV	QUALITY SYMBOLS	GENERAL TOLERANCES (UNLESS SPECIFIED)	DIMENSION STYLE <b>MM ONLY</b>	SCALE 1:10	DESIGN UNITS METRIC	THIRD ANGLE PROJECTION	
	▽=0 ▽=0	mm INCH	DRAWN BY DATE PPHELPS 2012/10/24	TITLE	CTX PACKAGING SPEC GEN. MRKT. PRODUCT CUSTOMER COPY		
		4 PLACES ± --- ± --- 3 PLACES ± --- ± --- 2 PLACES ± --- ± --- 1 PLACE ± --- ± ---	APPROVED BY DATE JNORTHRO 2012/11/26	MOLEX MOLEX INCORPORATED		SHEET NO. 1 OF 2	
		ANGULAR ± 1 °	MATERIAL NO. <b>SEE TABLE</b>	DOCUMENT NO. SD-31301-053	THIS DRAWING CONTAINS INFORMATION THAT IS PROPRIETARY TO MOLEX INCORPORATED AND SHOULD NOT BE USED WITHOUT WRITTEN PERMISSION		

PACKAGING DATA											
PRODUCT DESCRIPTION	CTX 64				CTX 150			CTX 280 SEALED			
PRODUCT P/N SERIES	0348030*** 0348031*** 0348032***		0348033*** 0348035***		034805****			034808****			
GRIP CODE	S	L	S	L	S	M	L	VS	S	M	L
PART WT (Kg/1000)	.1552	.1642	.126	.126	.3070	.3270	.3470	.6596	.6886	.7106	.7332
STAND PACK QTY (SPQ)	60000	60000	60000	60000	35000	30000	25000	10000	10000	10000	10000
QTY/REEL	10000	10000	10000	10000	7000	6000	5000	2000	2000	2000	2000
REELS/SHIPPER CARTON	6	6	6	6	5	5	5	5	5	5	5
CARTONS/PALLET (MAX)	5	5	5	5	5	5	5	5	5	5	5
FILLED CARTON WT (Kg)	14.83	15.37	TBD	TBD	15.64	14.70	13.57	11.5	11.8	12.0	12.2
FLANGE DIAMETER (MM)	610	610	610	610	610	610	610	610	610	610	610

CUSTOMER COPY

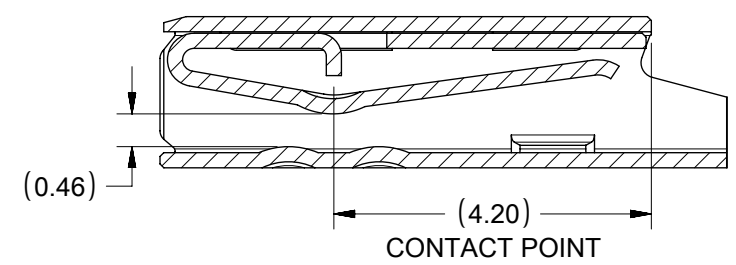
SPQ CORRECTION EC NO: UAU2015-0955 DRWN:PPHELPS 2014/12/19 CHKD: APPR: JNORTHRO 2015/01/26 REV: 4	DESCRIPTION JNORTHRO	QUALITY SYMBOLS	GENERAL TOLERANCES (UNLESS SPECIFIED) <table border="1"> <tr> <td></td> <td>mm</td> <td>INCH</td> </tr> <tr> <td>4 PLACES</td> <td>± ---</td> <td>± ---</td> </tr> <tr> <td>3 PLACES</td> <td>± ---</td> <td>± ---</td> </tr> <tr> <td>2 PLACES</td> <td>± ---</td> <td>± ---</td> </tr> <tr> <td>1 PLACE</td> <td>± ---</td> <td>± ---</td> </tr> </table>		mm	INCH	4 PLACES	± ---	± ---	3 PLACES	± ---	± ---	2 PLACES	± ---	± ---	1 PLACE	± ---	± ---	DIMENSION STYLE <b>MM ONLY</b>	SCALE 1:15	DESIGN UNITS METRIC	THIRD ANGLE PROJECTION
				mm	INCH																	
		4 PLACES		± ---	± ---																	
		3 PLACES		± ---	± ---																	
2 PLACES	± ---	± ---																				
1 PLACE	± ---	± ---																				
 = 0  = 0	DRAWN BY PPHELPS DATE 2012/10/24 CHECKED BY DATE	TITLE <b>CTX PACKAGING SPEC          GEN. MRKT. PRODUCT          CUSTOMER COPY</b>																				
APPROVED BY JNORTHRO DATE 2012/11/26	MOLEX INCORPORATED DOCUMENT NO. SD-31301-053		SHEET NO. 2 OF 2																			
DRAFT WHERE APPLICABLE MUST REMAIN WITHIN DIMENSIONS		SEE TABLE	THIS DRAWING CONTAINS INFORMATION THAT IS PROPRIETARY TO MOLEX INCORPORATED AND SHOULD NOT BE USED WITHOUT WRITTEN PERMISSION																			

**TIN CONTACT SHAPE**

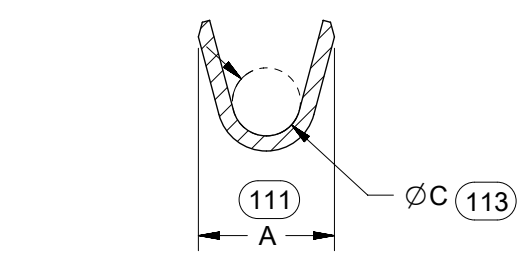


SECTION Y-Y  
SCALE 10:1

INSULATION GRIP

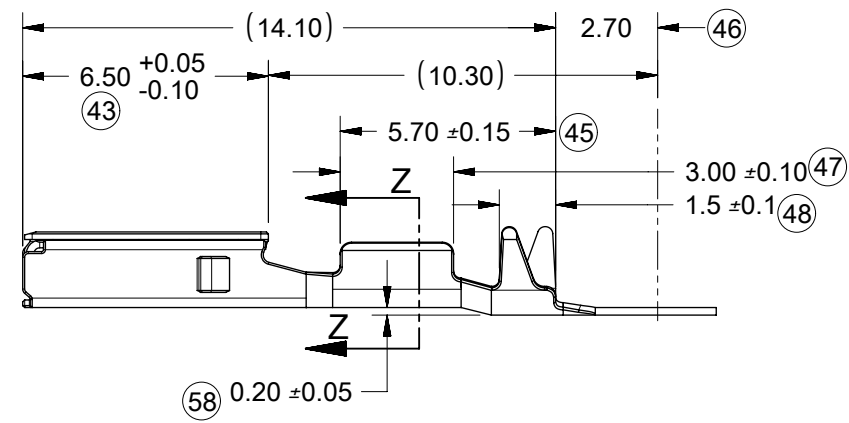
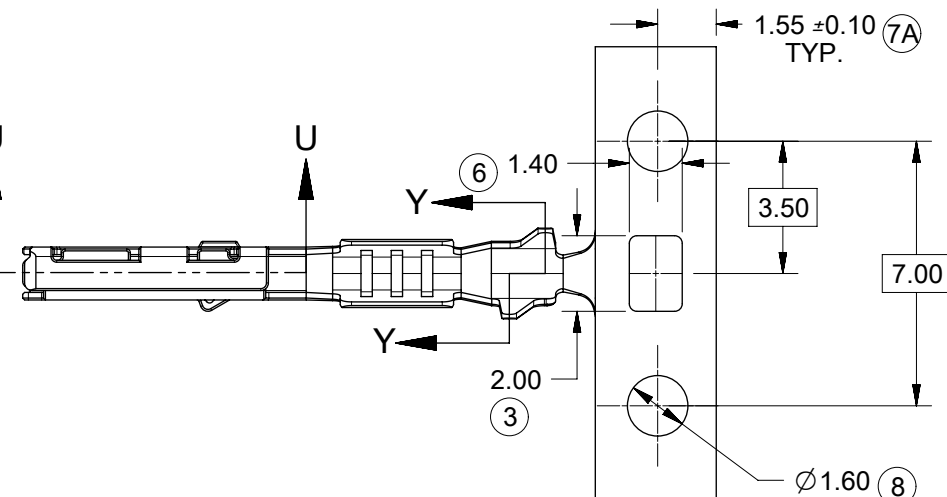
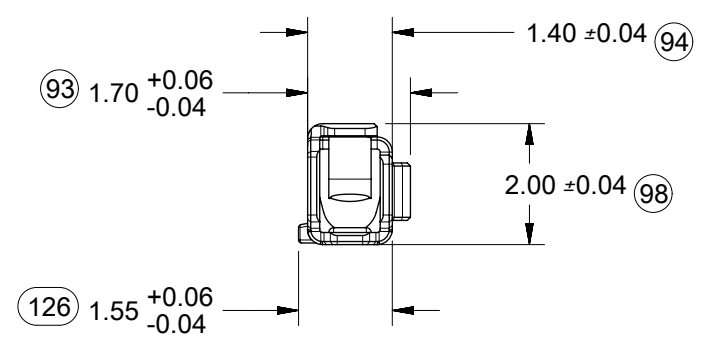


SECTION U-U  
SCALE 10:1



SECTION Z-Z  
SCALE 10:1

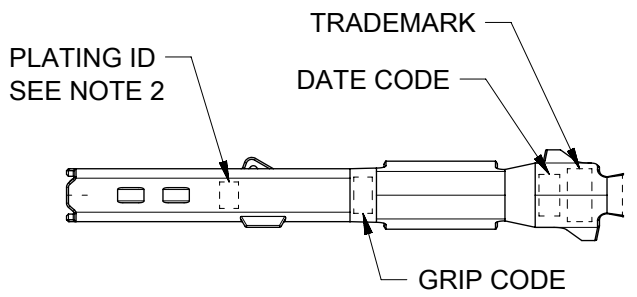
CONDUCTOR GRIP



SCALE 8:1



ISO VIEWS  
NOT TO SCALE



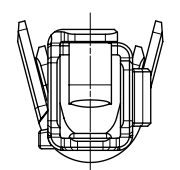
NOTES: (UNLESS OTHERWISE SPECIFIED)

- MATERIAL: COPPER ALLOY
- PLATING MARK: TIN (Sn) - NO MARK  
SILVER (Ag) - A
- PACKAGING PER SD-31301-053
- CRIMPING PER AS-502306-002
- PROBING AT ANY LOCATION ON THE TERMINAL BEAM IS NOT PERMITTED
- PRODUCT SPECIFICATION PER PS-502306-001
- ANTI-TARNISH TREATMENT FOR SILVER PLATED AREA: SYNTHETIC HYDROCARBON CONTACT SURFACE FINISH OR EQUIVALENT

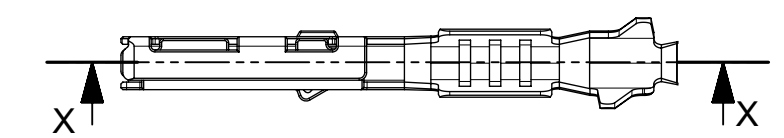
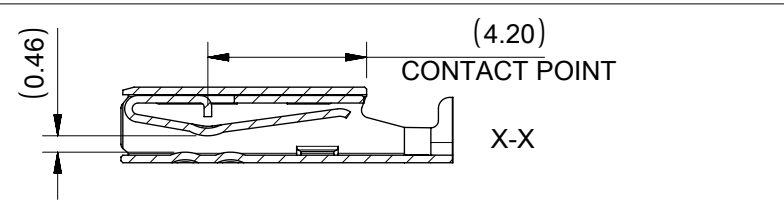
TABLE 1												
FAMILY	GENDER	SEALING	PLATING	PART NO	PAYOFF DIRECTION	GRIP CODE	WIRE SIZES*	A ±0.20	B ±0.30	C ±0.10	D ±0.20	SPECIAL CHARACTERISTICS
CTX64	RECEPTACLE	MAT SEAL	Sn	34803-3211	LEFT (D)	S	22AWG	1.80	2.40	0.90	1.36	STANDARD PERFORMANCE TIN
				34803-3213	RIGHT (B)		0.22-0.35mm <sup>2</sup>					
				34803-3212	LEFT (D)	L	20AWG	2.15	2.50	1.20	1.72	
				34803-3214	RIGHT (B)		0.50-0.85mm <sup>2</sup>					
			Ag	34803-5303	LEFT (D)	S	22AWG	1.80	2.40	0.90	1.36	HIGH PERFORMANCE SILVER
				34803-5307	RIGHT (B)		0.22-0.35mm <sup>2</sup>					
				34803-5305	LEFT (D)	L	20AWG	2.15	2.50	1.20	1.72	
				34803-5309	RIGHT (B)		0.50-0.85mm <sup>2</sup>					

\* SEE AS-502306-002 FOR SPECIFIC WIRE TYPES

**SILVER CONTACT SHAPE**



SCALE 8:1



<b>QUALITY SYMBOLS</b> ▽ = 0 ▽ = 0 ▽ = 0 ▼ = 0 ▽ = 0 ⊠ = 0 ■ = 0 ▽ = 0	THIS DRAWING CONTAINS INFORMATION THAT IS PROPRIETARY TO MOLEX ELECTRONIC TECHNOLOGIES, LLC AND SHOULD NOT BE USED WITHOUT WRITTEN PERMISSION												
	EC NO: 172386 DRWN: NVENKATESHSH CHKD: TOMSMITH APPR: TOMSMITH	GENERAL TOLERANCES (UNLESS SPECIFIED)		DIMENSION UNITS		SCALE							
		4 PLACES ±		mm		5:1							
		3 PLACES ±		DRWN BY		DATE							
		2 PLACES ± 0.08		BJENNINGS01		2014/05/21							
		1 PLACE ± 0.08		CHK'D BY		DATE							
	0 PLACES ±		ADHIR		2014/05/21								
	DRAFT WHERE APPLICABLE MUST REMAIN WITHIN DIMENSIONS		APPR BY		DATE		PRODUCT CUSTOMER DRAWING						
	B		BMOSE		2014/06/02		SERIES		MATERIAL NUMBER		CUSTOMER		
	B		DRAWING SIZE		THIRD ANGLE PROJECTION		34803				GENERAL MARKET		
B1		B		B		DOCUMENT NUMBER		DOC TYPE		DOC PART	SHEET NUMBER		
						SD-34803-002		PSD	001	1 OF 1			