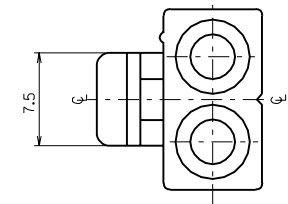
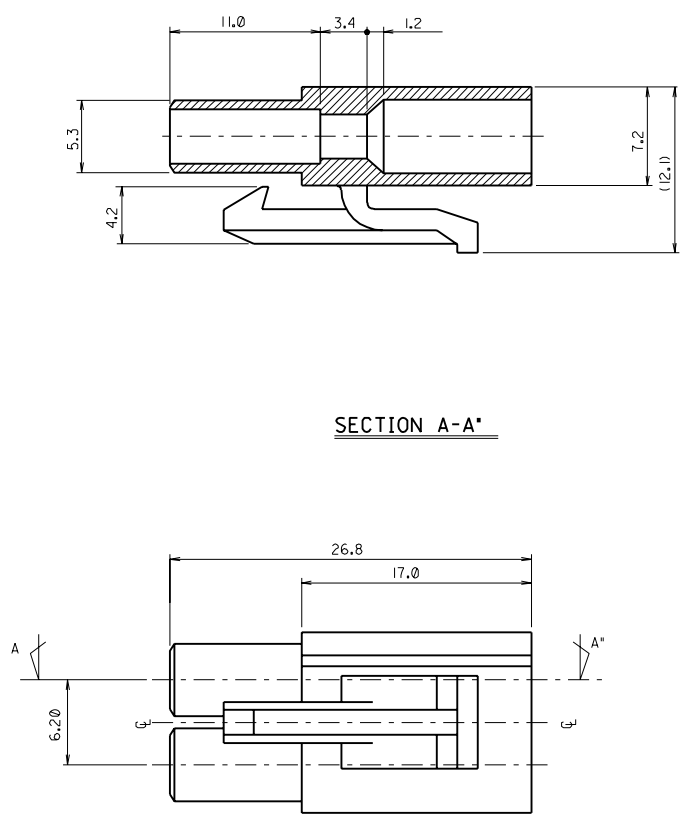
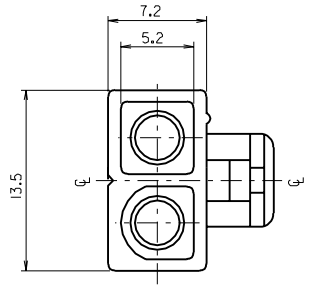


8 7 6 5 4 3 2 1

PROJECT NO. SIMILAR ITEM EDP NO. ENG. NO. SD 35143-020\*



- NOTES
1. MATERIAL: NYLON 6 (UL94-V2)
  2. APPLICABLE TERMINAL: 35728-0201
  3. MATING HOUSING: 35141-020\*
  4. COLOR : 35143-0201 (NATURAL)  
35143-0202 (RED)

**SECTION A-A'**

DO NOT SCALE DRAWING DIMENSION IN METRIC

ASS'Y PART		QTY/REEL OR PACK	SURFACE AREA	MATERIAL	WIRE RANGE	GENERAL TOLERANCES	MOLEX MOLEX-KOREA CO.,LTD.
DESCRIPTION	ENG.NO.	500 P'TY/BAG	MM <sup>2</sup>	SEE NOTES	AWG:	DIM. : ±0.25	
					MM <sup>2</sup> : ++	ANGLE :	REVISE ONLY ON CAD SYSTEM
							ENG.NO. SD 35143-020*
							REV C

8 7 6 5 4 3 2 1 MK-9

F E D C B A

IOF I 2MALE.DGN