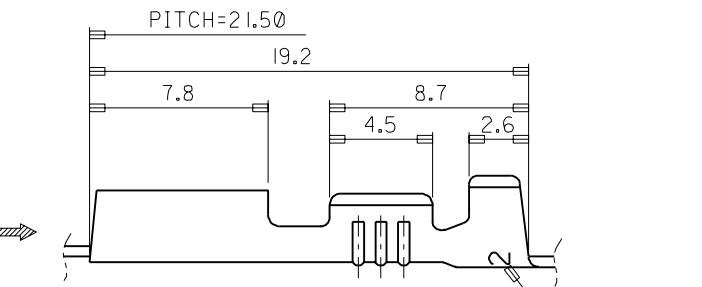
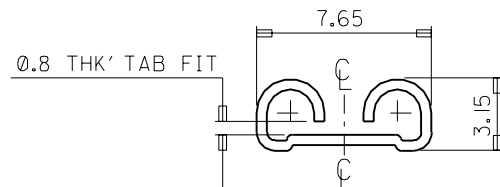
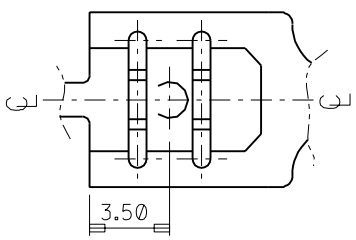


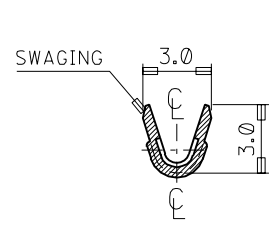
- NOTES
1. MATERIAL : BRASS 0.45THK'
  2. FINISH : 35725-4300 (UNPLATED)  
35725-4310 (POST PLATED TIN)
  3. MATING TAB THICKNESS : 0.8mm
  4. RECOMMENDED LENGTH OF WIRE STRIP IS 6.0-6.8mm.



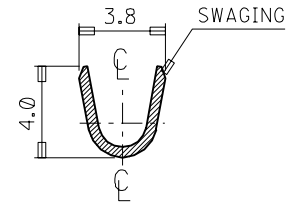
"A" →



VIEW "A"



SEC' : C-C'



SEC' : D-D'

|                                                         |  |                                                                       |                 |                                       |                 |
|---------------------------------------------------------|--|-----------------------------------------------------------------------|-----------------|---------------------------------------|-----------------|
| WIRE RANGE<br>AWG #22-#20<br>(0.3-0.5 mm <sup>2</sup> ) |  | MATERIAL<br>BRASS                                                     |                 | molex MOLEX-KOREA CO.,LTD.            |                 |
| INSULATION RANGE<br>Ø 1.5-Ø 2.0                         |  | GENERAL TOLERANCE<br>DIMENSION : ±0.3<br>ANGLE : °1°                  |                 | DRAWN BY<br>J.S.KANG                  | CHK'D BY        |
| DIE FEED: 21.50                                         |  | DIMENSION CLASSIFICATION<br>▽ : CRITICAL ▼ : MAJOR<br>( ) : REFERENCE |                 | APP'D BY                              | SCALE 5/1       |
| APPLICATOR FEED: 21.50                                  |  | A                                                                     | REDRAWING       | TITLE:<br>.250 SLIP-ON RECEPTACLE (S) |                 |
| O'TY/ REEL OR PACK<br>5,000 O'TY/REEL                   |  | LTR                                                                   | REVISION RECORD | ENG. NO.                              | SHEET<br>1 of 1 |
| REVISE ONLY ON CAD SYSTEM                               |  |                                                                       | DATE            | ENG. NO.<br>SD 35725-43*0             | REV<br>A        |