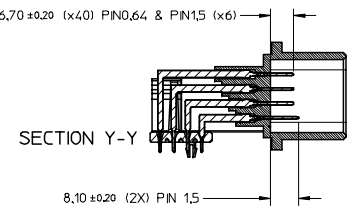
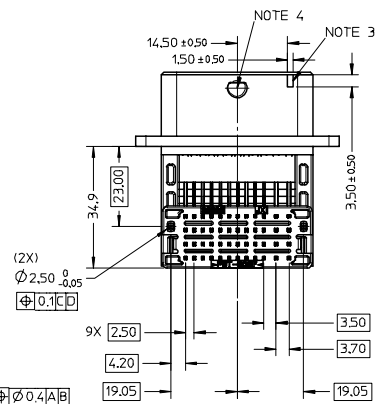
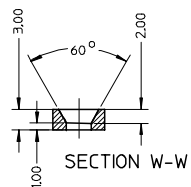
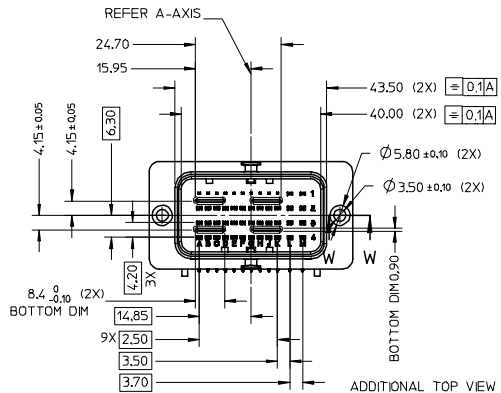
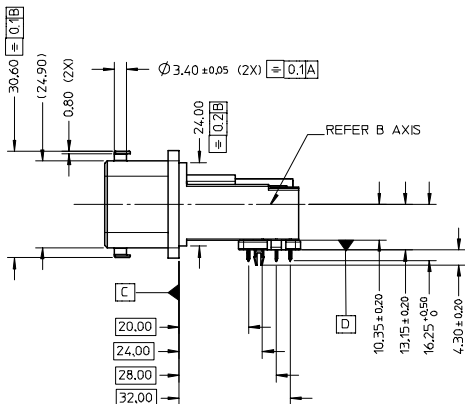
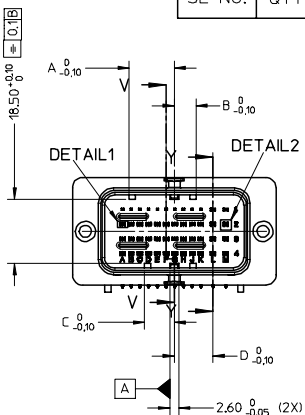
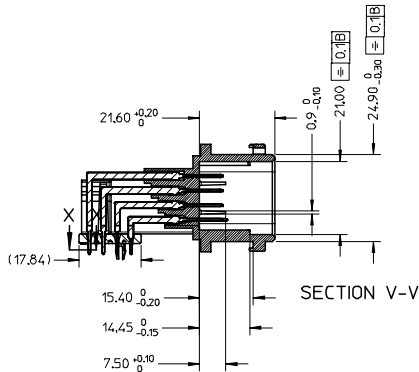
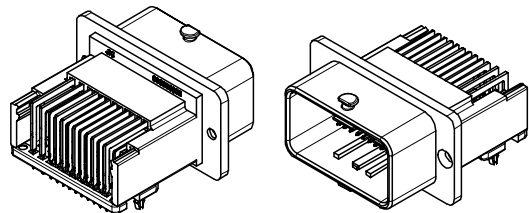
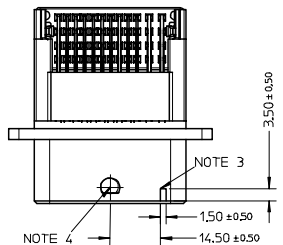
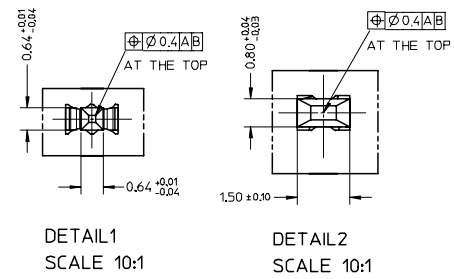


RoHS COMPLIANT

| | | | | |
|--------|-----|-------------|-------------------------|-------------------------------------|
| 4 | 1 | GRID PLATE | PBT 30% GLASS FILLED | BLACK |
| 3 | 1 | HOUSING | | BLACK |
| 2 | 2 | 1.5 | CuZn30 | NICKEL UNDERCOAT: 1.3µM TO 2.2µM |
| 1 | 10 | 0.64 | CuZn30 | MATTE TIN OVERCOAT: 4µM TO 5µM |
| SL NO. | QTY | DESIGNATION | MATERIAL | FINISH |



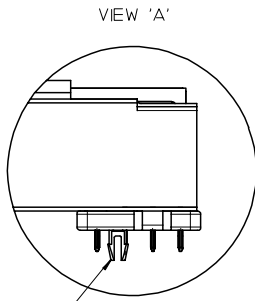
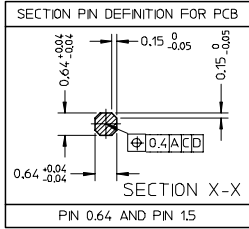
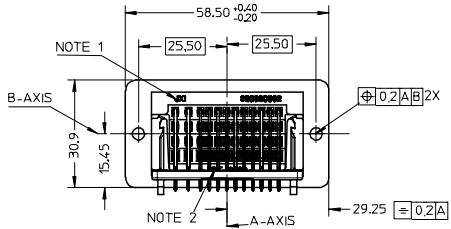
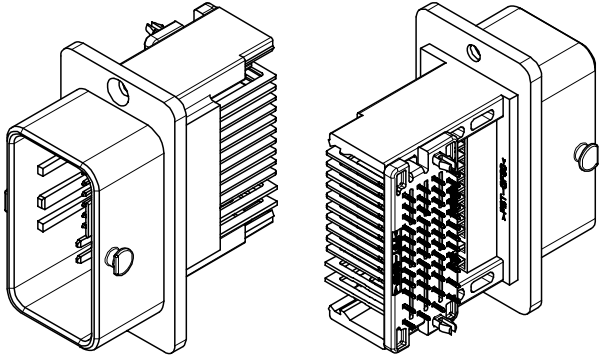
| | | |
|-----------|-----------|-----------|
| D | 6.30 | 12.90 |
| C | 8.50 | 12.90 |
| B | 6.30 | 10.70 |
| A | 12.90 | 8.50 |
| DIMENSION | 366380002 | 366380003 |
| | 366380004 | 366380005 |
| | 366380006 | 366380007 |
| | 366380008 | 366380009 |
| | (BLACK) | (BROWN) |
| MOLEX PN | | |



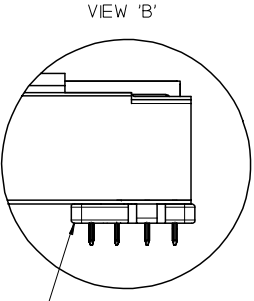
| | | | | | | | |
|---|---|--|--|--|--|---------------------|--|
| ENTER DESCRIPTION EIC NO: 12008-0132 DRWNR: RANGAPPAO1 2007/09/20 CHKDR: PRASAD 2007/09/21 APPR: KRASAD 2007/09/21 REV: DESCRIPTION | QUALITY SYMBOLS ▽=0 ▽=0 | GENERAL TOLERANCES (UNLESS SPECIFIED) mm INCH 4 PLACES ± --- ± --- 3 PLACES ± --- ± --- 2 PLACES ± 0.1 ± --- 1 PLACE ± 0.2 ± --- ANGULAR ± 1 ° | DIMENSION STYLE MM ONLY DRAWN BY DATE ROOPESH 08/05/2006 CHECKED BY DATE DINESH 08/05/2006 APPROVED BY DATE DINESH 08/05/2006 MATERIAL NO. DOCUMENT NO. | SCALE 1:1 DESIGN UNITS METRIC THIRD ANGLE PROJECTION | TITLE CMC HEADER 48/48WAY AND 48/36WAY T3 INTERFACE MOLEX INCORPORATED | SHEET NO. 1 OF 3 | |
| | DRAFT WHERE APPLICABLE MUST REMAIN WITHIN DIMENSIONS | | SEE TABLE 'A' | | SD-36638-002 | | |
| | THIS DRAWING CONTAINS INFORMATION THAT IS PROPRIETARY TO MOLEX INCORPORATED AND SHOULD NOT BE USED WITHOUT WRITTEN PERMISSION | | | | | | |
| | SIZE A2 | | | | | | |

TABLE 'A'

| | | | | | | | |
|---------------------------|---------------------------|---------------|---------------------------|---------------------------------|-------------|-----------------|------------------------------------|
| ASSY CMC HEADER | ASSY CMC 48 WAY 48 CKT | 366380002 | BLACK | AVAILABLE (SEE VIEW 'A') | 1.6 | 1.5 | L1 & M1,L2 & M2 L3 & M3,L4 & M4 |
| | | 366380003 | BROWN | | | | |
| | | 366380004 | BLACK | NOT AVAILABLE (SEE VIEW 'B') | 0.8/1.6/2.0 | 0.64 | |
| | | 366380005 | BROWN | | | | |
| ASSY CMC 48 WAY 36 CKT | | 366380006 | BLACK | AVAILABLE (SEE VIEW 'A') | 1.6 | 1.5 | L2 & M2 L3 & M3,L4 & M4 |
| | | 366380007 | BROWN | | | | |
| | | 366380008 | BLACK | NOT AVAILABLE (SEE VIEW 'B') | 0.8/1.6/2.0 | 0.64 | |
| | | 366380009 | BROWN | | | | |
| DESIGNATION | MOLEX PN | CODING COLOUR | PCB LOCKING ON GRID PLATE | FOR PCB OF THICKNESS | PIN | CAVITIES NUMBER | |



GRID PLATE WITH PCB LOCKING

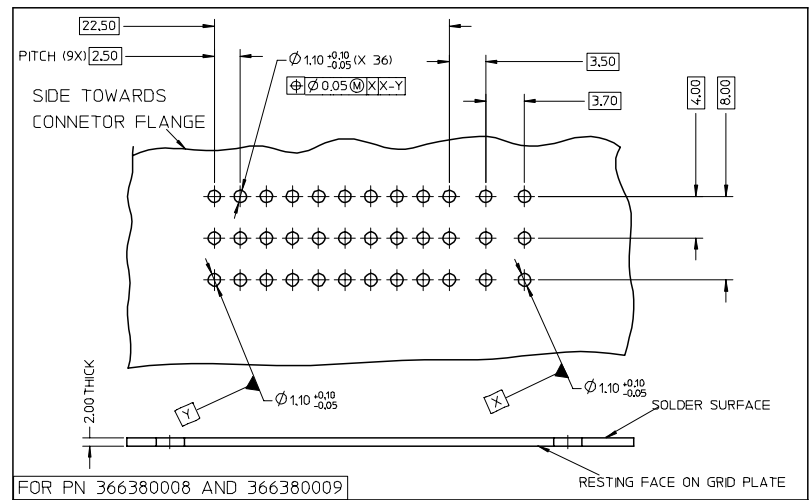
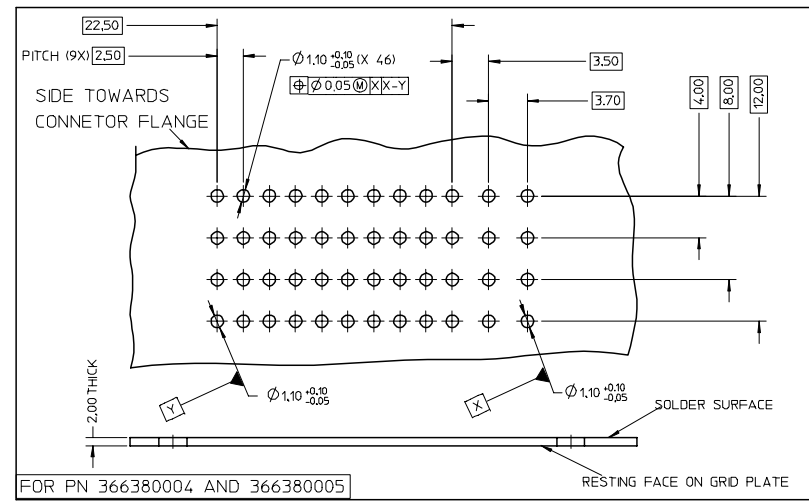
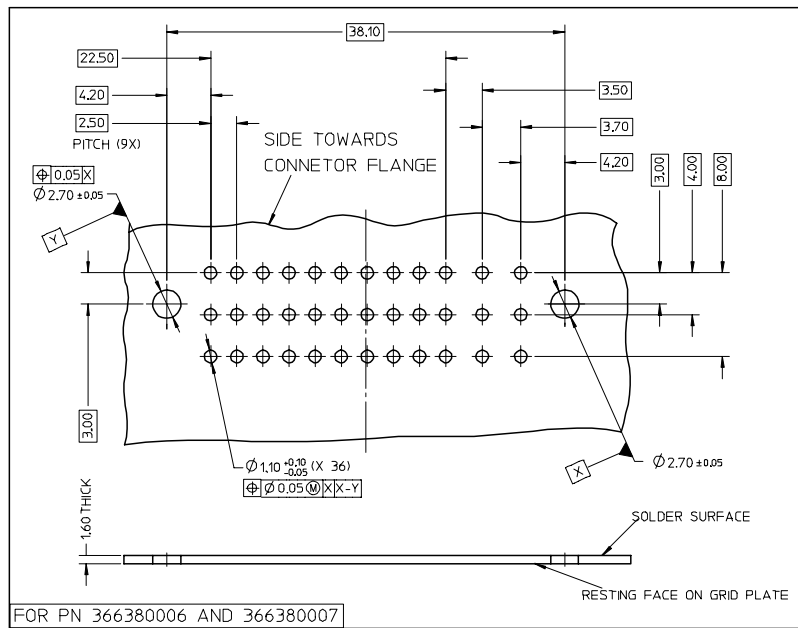
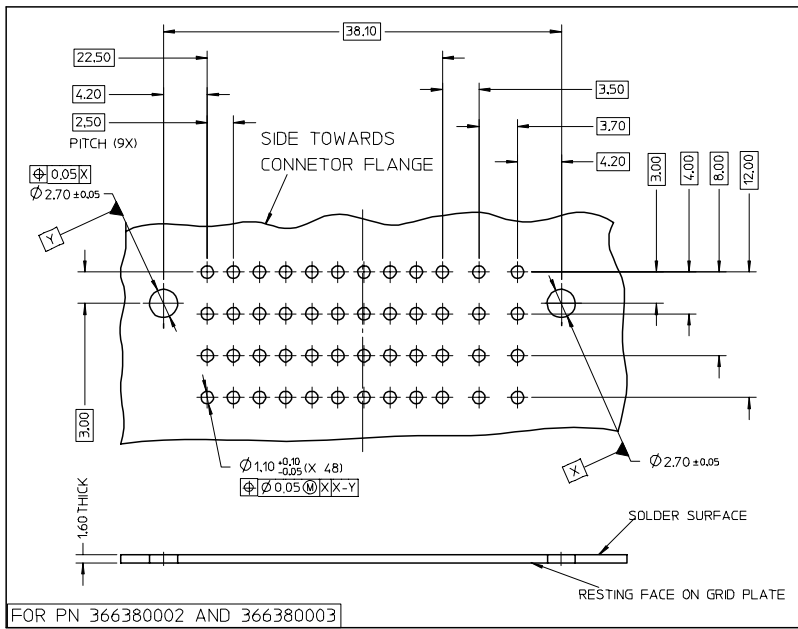


GRID PLATE WITHOUT PCB LOCKING

- NOTES :
1. AREA FOR JXI AND MOLEX PART NUMBER REPRESENTATION
 2. AREA FOR PLASTIC MATERIAL >PBT-30%GF< DESCRIPTION
 3. PAINT WITH WHITE COLOR(RoHS COMPLIANT) AT SPECIFIED TWO AREAS
 4. PAINT WITH BROWN COLOR(RoHS COMPLIANT) AT SPECIFIED AREA ON BOTH SIDE FOR PN: 366380003,366380005, 366380007,366380009.
 5. PART TO MEET SOLDERABILITY SPEC SMES-152
 6. PACKAGING SPECIFICATION PK-36638-002

| | | | | | | | |
|---|--|--|--|--|--|--|--|
| ENTER DESCRIPTION EIC NO: 12008-0132 DRW:NRANGAPPA01 2007/09/20 CHK:KPRASAD 2007/09/21 APPR:KPRASAD 2007/09/21 REV: | QUALITY SYMBOLS | GENERAL TOLERANCES (UNLESS SPECIFIED) | DIMENSION STYLE | SCALE | DESIGN UNITS | THIRD ANGLE PROJECTION | |
| | ▽=0 ▽=0 | 4 PLACES ± --- ± --- 3 PLACES ± --- ± --- 2 PLACES ± 0.1 ± --- ± --- 1 PLACE ± 0.2 ± --- ± --- ANGULAR ± 1 ° | mm INCH ± --- ± --- ± 0.1 ± --- ± 0.2 ± --- | DIMENSIONAL DATE ROOPESH 08/05/2006 DINESH 08/05/2006 APPROVED BY DATE DINESH 08/05/2006 | MOLEXY HOLE SIZE 1.15 DIA METRIC MOLEXY HOLE SIZE 1.15 DIA METRIC MOLEXY HOLE SIZE 1.15 DIA METRIC | MOLEXY HOLE SIZE 1.15 DIA METRIC MOLEXY HOLE SIZE 1.15 DIA METRIC MOLEXY HOLE SIZE 1.15 DIA METRIC | MOLEXY HOLE SIZE 1.15 DIA METRIC MOLEXY HOLE SIZE 1.15 DIA METRIC MOLEXY HOLE SIZE 1.15 DIA METRIC |
| | DRAFT WHERE APPLICABLE MUST REMAIN WITHIN DIMENSIONS | | | SEE TABLE 'A' | | TITLE CMC HEADER 48 WAY AND 48/36WAY T3 INTERFACE | |
| | | | | MATERIAL NO. DOCUMENT NO. | | MOLEX INCORPORATED SD-36638-002 | |

INTERFACE PCB DEFINITION (SOLDER SIDE)



| | | | | | | | |
|---|--|---|-----------------|--------------------------|--|------------------------|--|
| ENTER DESCRIPTION EIC NO.: I2008-0132 DRAWN/RANGAPPAO1 2007/09/20 CHK/KPRASAD 2007/09/21 APPR/KPRASAD 2007/09/21 | QUALITY SYMBOLS | GENERAL TOLERANCES (UNLESS SPECIFIED) | DIMENSION STYLE | SCALE | DESIGN UNITS | THIRD ANGLE PROJECTION | |
| | $\nabla=0$ $\nabla=0$ | mm INCH 4 PLACES ± --- ± --- 3 PLACES ± --- ± --- 2 PLACES ± 0.1 ± --- 1 PLACE ± 0.2 ± --- ANGULAR ± 1 ° | MM ONLY | 1:1 | PITCH METRIC | | |
| | DRAWN BY DATE ROOPESH 08/05/2006 CHECKED BY DATE DINESH 08/05/2006 APPROVED BY DATE DINESH 08/05/2006 | DRAFT WHERE APPLICABLE MUST REMAIN WITHIN DIMENSIONS | | SEE TABLE 'A' SIZE A2 | TITLE CMC HEADER 48/48WAY AND 48/36WAY T3 INTERFACE | | |
| | MATERIAL NO. DOCUMENT NO. | MOLEX INCORPORATED | | SHEET NO. 3 OF 3 | | | |