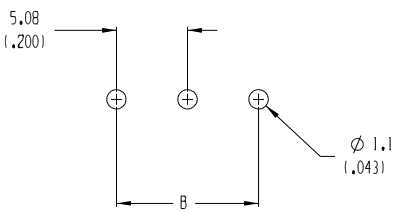
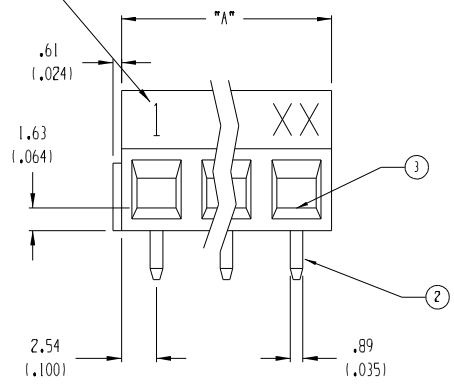
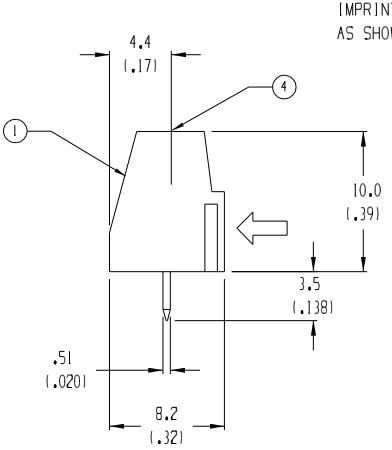


3 CIRCUIT SHOWN

IMPRINT 1.8 (.07)
AS SHOWN



- NOTES:
1. MATERIAL: SEE TABLE
 2. FINISHES: SEE TABLE
 3. PRODUCT SPECIFICATION: NOT REQUIRED
 4. PACKAGING: NOT REQUIRED
 5. MATES WITH: NONE

MATERIAL NO. 10A, GREEN	MATERIAL NO. 10A, BLACK	MATERIAL NO. (GREEN)	MATERIAL NO. (BLACK)	NO. OF CIRCUITS "XX"	DIM. "A"	DIM. "B"
	398820302	398804302	398800302	02	10.2 (1.40)	5.08 (1.200)
	398820303	398804303	398800303	03	15.2 (1.60)	10.16 (1.400)
	398820304	398804304	398800304	04	20.3 (1.80)	15.24 (1.600)
		398804305	398800305	05	25.4 (1.00)	20.32 (1.800)
		398804306	398800306	06	30.5 (1.20)	25.40 (1.000)
		398804307	398800307	07	35.6 (1.40)	30.48 (1.200)
398890028		398804308	398800308	08	40.6 (1.60)	35.56 (1.400)
		398804309	398800309	09	45.7 (1.80)	40.64 (1.600)
		398804310	398800310	10	50.8 (2.00)	45.72 (1.800)
		398804311	398800311	11	55.9 (2.20)	50.80 (2.000)
		398804312	398800312	12	61.0 (2.40)	55.88 (2.200)
		398804313	398800313	13	66.0 (2.60)	60.96 (2.400)
		398804314	398800314	14	71.1 (2.80)	66.04 (2.600)
		398804315	398800315	15	76.2 (3.00)	71.12 (2.800)
		398804316	398800316	16	81.3 (3.20)	76.20 (3.000)
		398804317	398800317	17	86.4 (3.40)	81.28 (3.200)
		398804318	398800318	18	91.4 (3.60)	86.36 (3.400)
		398804319	398800319	19	96.5 (3.80)	91.44 (3.600)
		398804320	398800320	20	101.6 (4.00)	96.52 (3.800)
		398804321	398800321	21	106.7 (4.20)	101.60 (4.000)
		398804322	398800322	22	111.8 (4.40)	106.68 (4.200)
		398804323	398800323	23	116.8 (4.60)	111.76 (4.400)
		398804324	398800324	24	121.9 (4.80)	116.84 (4.600)
		398804325	398800325	25	127.0 (5.00)	121.92 (4.800)

ITEM	QTY.	DESCRIPTION	MATERIAL	FINISH
4	XX	SCREW, M3	COPPER	NICKEL
3	XX	CAGE CLAMP	COPPER	NICKEL
2	XX	TERMINAL, PC	COPPER	HOT TIN DIP
1	I	INSULATOR	POLYAMIDE	BLACK

EC NO. 4242
DRAWN: RK 9-26-05
CHK'G:
APPR:

MAJOR
CRITICAL
SPC
S

DESCRIPTION
REV

GENERAL TOLERANCES:
(UNLESS SPECIFIED)

	mm	INCH
4 PLACES	±.0015	±.0005
3 PLACES	±.038	±.005
2 PLACES	±.13	±.01
1 PLACE	±.3	

ANGULAR: ±2°

DRAFT WHERE APPLICABLE MUST
REMAIN WITHIN DIMENSIONS

SCALE 3:1

DESIGN UNITS
 mm INCH

THIRD ANGLE
PROJECTION

DRAWN BY & DATE
R. KEMP 5-14-02

CHECKED BY & DATE
R. STONE 5-14-02

APPROVED BY & DATE
P. WALTZ 5-14-02

CAD FILENAME
8801XX.PRT

PROJECT NO. 04-124

DIMENSIONS:
 mm INCH mm ONLY

SHT REV

REVISE ON
CAD ONLY

TITLE: 5.08mm EUROSTYLE LOW,
SINGLE ROW FIXED BLOCK

MOLEX INCORPORATED

MATERIAL NO. SEE CHART

DRAWING NO. SD-39880-003

SHEET NO. 1 OF 1

THIS DRAWING CONTAINS INFORMATION THAT IS PROPRIETARY TO MOLEX
INCORPORATED AND SHOULD NOT BE USED WITHOUT WRITTEN PERMISSION.

SIZE B