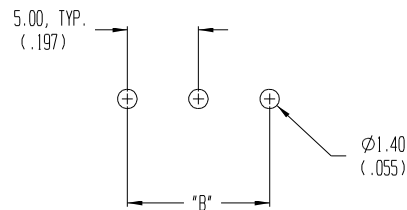


MATERIAL NO.	NUMBER OF CIRCUITS "XX"	DIM. "A"	DIM. "B"
398900402	02	10.00 (.394)	5.00 (.197)
398900403	03	15.00 (.591)	10.00 (.394)
398900404	04	20.00 (.787)	15.00 (.591)
398900405	05	25.00 (.984)	20.00 (.787)
398900406	06	30.00 (1.181)	25.00 (.984)
398900407	07	35.00 (1.378)	30.00 (1.181)
398900408	08	40.00 (1.575)	35.00 (1.378)
398900409	09	45.00 (1.772)	40.00 (1.575)
398900410	10	50.00 (1.969)	45.00 (1.772)
398900411	11	55.00 (2.166)	50.00 (1.969)
398900412	12	60.00 (2.363)	55.00 (2.166)



- NOTES:
1. MATERIAL: SEE TABLE
 2. FINISHES: SEE TABLE
 3. PRODUCT SPECIFICATION: NOT REQUIRED
 4. PACKAGING: NOT REQUIRED
 5. MATES WITH: NONE
 6. 3 CIRCUIT SHOWN.

ITEM	QTY.	DESCRIPTION	MATERIAL	FINISH
4	XX	SCREW	COPPER	NICKEL
3	XX	CAGE CLAMP	COPPER	NICKEL
2	XX	TERMINAL	COPPER	HOT TIN DIP
1	1	INSULATOR	POLYAMIDE	BLACK

EC NO. ECN# 3846 DRWN: CY 09-02-04 CHK: APPR:	DESCRIPTION MAJOR CRITICAL SPC	GENERAL TOLERANCES: (UNLESS SPECIFIED) mm INCH 4 PLACES ±.0015 3 PLACES ±.038 ±.005 2 PLACES ±.13 ±.01 1 PLACE ±.3 ANGULAR: ±2°		SCALE 3:1 DESIGN UNITS <input type="checkbox"/> mm <input checked="" type="checkbox"/> INCH	THIRD ANGLE PROJECTION TITLE: 5.00mm EUROSTYLE MEDIUM, SINGLE ROW, 35° ANGLED ENTRY
		DRAWN BY & DATE R. KEMP 7-1-03		CHECKED BY & DATE R. STONE 7-1-03	
		APPROVED BY & DATE P. WALTZ 7-1-03		MOLEX INCORPORATED	
		CAD FILENAME 8902XX		MATERIAL NO. SEE CHART	DRAWING NO. SD-39890-001

PROJECT NO. N/A
 DIMENSIONS: mm INCH mm ONLY
 SHT REV
 REVISE ON CAD ONLY
 DRAFT WHERE APPLICABLE MUST REMAIN WITHIN DIMENSIONS
 THIS DRAWING CONTAINS INFORMATION THAT IS PROPRIETARY TO MOLEX INCORPORATED AND SHOULD NOT BE USED WITHOUT WRITTEN PERMISSION.
 SIZE B