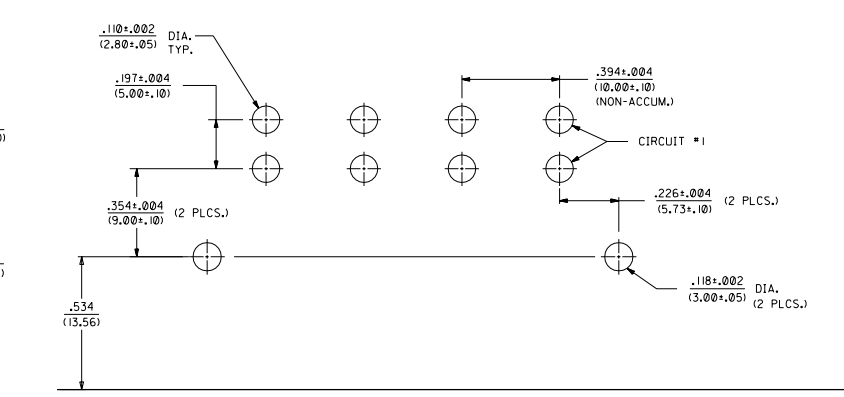
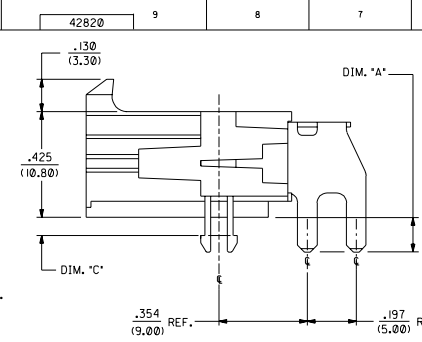
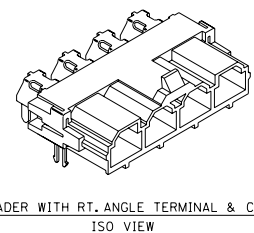
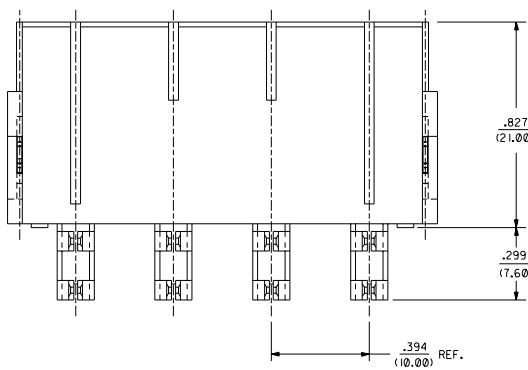
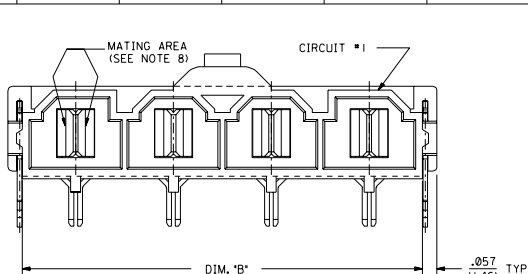
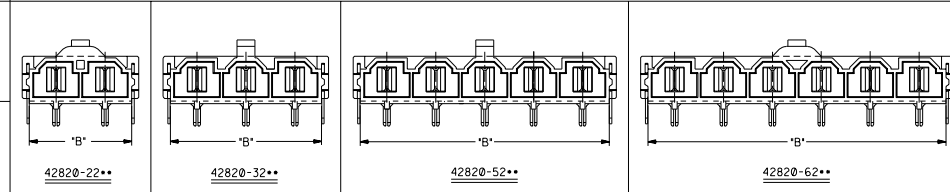


ITEM NUMBER	CKT. SIZE	DIM. "A"	DIM. "B"	DIM. "C"	TERMINAL PLATING
42820-2212	2	.138/(3.50)	.823/(20.90)	.071/(1.80)	
42820-2222	2	.201/(5.10)	.823/(20.90)	.102/(2.60)	
42820-2232	2	.201/(5.10)	.823/(20.90)	.134/(3.40)	
42820-2242	2	.327/(8.30)	.823/(20.90)	.259/(6.58)	
42820-3212	3	.138/(3.50)	1.217/(30.90)	.071/(1.80)	
42820-3222	3	.201/(5.10)	1.217/(30.90)	.102/(2.60)	
42820-3232	3	.201/(5.10)	1.217/(30.90)	.134/(3.40)	
42820-3242	3	.327/(8.30)	1.217/(30.90)	.259/(6.58)	
42820-4212	4	.138/(3.50)	1.610/(40.90)	.071/(1.80)	
42820-4222	4	.201/(5.10)	1.610/(40.90)	.102/(2.60)	
42820-4232	4	.201/(5.10)	1.610/(40.90)	.134/(3.40)	
42820-4242	4	.327/(8.30)	1.610/(40.90)	.259/(6.58)	
42820-5212	5	.138/(3.50)	2.004/(50.90)	.071/(1.80)	
42820-5222	5	.201/(5.10)	2.004/(50.90)	.102/(2.60)	
42820-5232	5	.201/(5.10)	2.004/(50.90)	.134/(3.40)	
42820-5242	5	.327/(8.30)	2.004/(50.90)	.259/(6.58)	
42820-6212	6	.138/(3.50)	2.389/(60.90)	.071/(1.80)	
42820-6222	6	.201/(5.10)	2.389/(60.90)	.102/(2.60)	
42820-6232	6	.201/(5.10)	2.389/(60.90)	.134/(3.40)	
42820-6242	6	.327/(8.30)	2.389/(60.90)	.259/(6.58)	
42820-2332	2	.201/(5.10)	.823/(20.90)	N/A	
42820-2342	2	.327/(8.30)	.823/(20.90)	N/A	
42820-2213	2	.138/(3.50)	.823/(20.90)	.071/(1.80)	
42820-2223	2	.201/(5.10)	.823/(20.90)	.102/(2.60)	
42820-2233	2	.201/(5.10)	.823/(20.90)	.134/(3.40)	
42820-2243	2	.327/(8.30)	.823/(20.90)	.259/(6.58)	
42820-3213	3	.138/(3.50)	1.217/(30.90)	.071/(1.80)	
42820-3223	3	.201/(5.10)	1.217/(30.90)	.102/(2.60)	
42820-3233	3	.201/(5.10)	1.217/(30.90)	.134/(3.40)	
42820-3243	3	.327/(8.30)	1.217/(30.90)	.259/(6.58)	
42820-4213	4	.138/(3.50)	1.610/(40.90)	.071/(1.80)	
42820-4223	4	.201/(5.10)	1.610/(40.90)	.102/(2.60)	
42820-4233	4	.201/(5.10)	1.610/(40.90)	.134/(3.40)	
42820-4243	4	.327/(8.30)	1.610/(40.90)	.259/(6.58)	
42820-5213	5	.138/(3.50)	2.004/(50.90)	.071/(1.80)	
42820-5223	5	.201/(5.10)	2.004/(50.90)	.102/(2.60)	
42820-5233	5	.201/(5.10)	2.004/(50.90)	.134/(3.40)	
42820-5243	5	.327/(8.30)	2.004/(50.90)	.259/(6.58)	
42820-6213	6	.138/(3.50)	2.389/(60.90)	.071/(1.80)	
42820-6223	6	.201/(5.10)	2.389/(60.90)	.102/(2.60)	
42820-6233	6	.201/(5.10)	2.389/(60.90)	.134/(3.40)	
42820-6243	6	.327/(8.30)	2.389/(60.90)	.259/(6.58)	



RECOMMENDED P.C. BOARD PLATED-THRU HOLE LAYOUT
(4 CKT. SHOWN FOR REF.)

- LEGEND:
- A-42820 - - - - -
CIRCUIT SIZE (2-6)
- MOUNTING OPTION
1 = FLANGES (SEE DWG. SDA-42820-111)
2 = RETENTION CLIP
3 = NO RETENTION CLIP
- P.C. BOARD THICKNESS
1 = .062/(1.57) NOMINAL
2 = .093/(2.36) NOMINAL
3 = .125/(3.18) NOMINAL
4 = .250/(6.35) NOMINAL
- PLATING
2 = OVERALL TIN-LEAD OVER NICKEL
3 = SELECT GOLD IN CONTACT AREA
SELECT TIN-LEAD ON SOLDER TAILS OVER NICKEL



- NOTES:
- HOUSING MATERIAL: 30% GLASS-FILLED NYLON 4/6, U.L. 94V-0, COLOR: BLACK.
 - TERMINAL MATERIAL: ALLOY 151.
 - PART MATES WITH MOLEX RECEPTACLE #42816-***2 WITH TPA.
 - PART IS DESIGNED IN METRIC.
 - AN "X" IN FRONT OF THE ITEM NUMBER INDICATES THE PART IS NOT TOoled.
 - TERMINAL PLATING : 2= .000100/(.00254) MIN. TIN-LEAD (90/10) OVER .000030/(.00076) MIN. NICKEL.
3= .000030/(.00076) MIN. SELECT GOLD IN CONTACT AREA. .000050/(.00127) MIN. SELECT TIN-LEAD ON SOLDER TAILS OVER .000050/(.00127) MIN. NICKEL.
 - PARTS ARE NOT TO BE MATED OR UNMATED WHILE CIRCUITS ARE LIVE.
 - WHEN USING OVERALL TIN-LEAD PLATED TERMINALS: FOR APPLICATIONS INVOLVING VIBRATION AND/OR THERMAL CYCLING, MOLEX STRONGLY RECOMMENDS THE USE OF NYE LUBRICANT (NYGEL 760G) ON THE MATING SURFACES OF THE TERMINAL.

REV.	DESCRIPTION
E3	ADDED -2332 UCR2003-1661 COMERC1 03-01-31
E2	ADDED -2342 UCR2003-0825 COMERC1 02-11-18
E1	ADD GOLD NOS. UCR2002-0806 COMERC1 01-07-12
E	ADD LONG CLIP UCR2000-0542 COMERC1 00-02-08
D	ADDED NEW PARTS UCR2000-0373 COMERC1 99-11-30
C1	ADDED PCB EDGE UCR 1999-0815 COMERC1 99-05-28
C	ADDED NOTE 8 UCR 1999-0195 ELNMG 98-09-28
B	3.00 WAS 2.90 DIA ECH U70633 POLCAR 96-12-03
A	REV. A FINAL REL. ECH U70468 POLCAR 95-08-23
3	ADDED DIM. "C" ECH UB1666 POLCAR 95-09-12
2	8.90 WAS 8.80 ECH U60950 CEF 2-12-96
1	NEW X-RELEASE ECH U60740 95-01-14 ASM

MFG. SH. REV. LTR. REVISIONS

RIGHT ANGLE HEADER ASSEMBLY (MINI-FIT SENIOR SERIES)

SEE CHART SDA-42820-0002

DATE: 1996-01-04

FILE NO. 42820

SCALE: 4:1

NO. DRAWING CONTAINS INFORMATION THAT IS PROPRIETARY TO MOLEX INC. AND SHALL REMAIN THE PROPERTY OF MOLEX INC. IF DISCLOSED TO ANY OTHER PARTY.