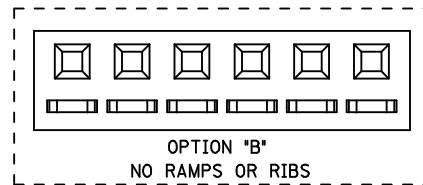
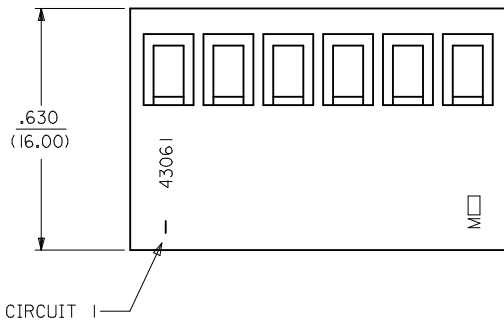
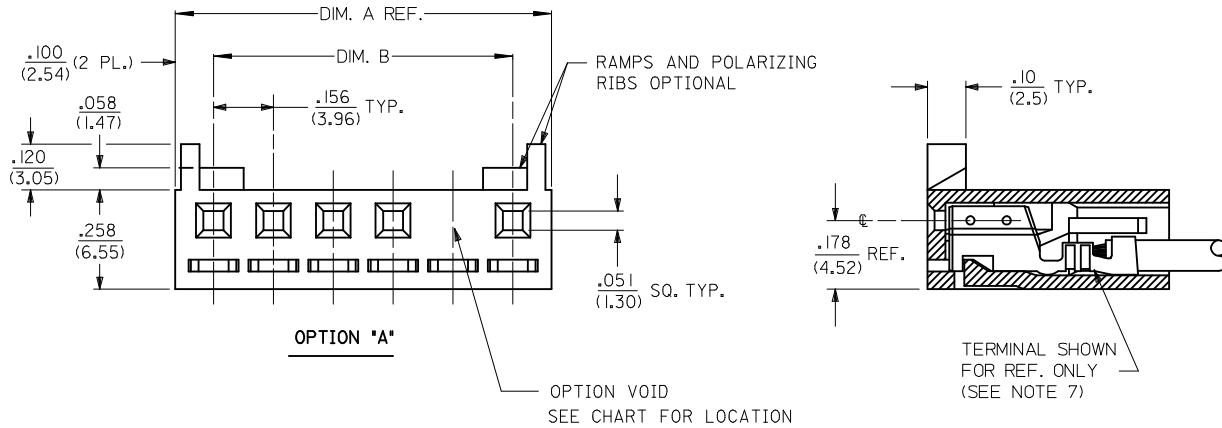


NOTES:

- 1) MATERIAL: GLASS FILLED POLYESTER, 94V-0
MATERIAL NUMBERS 43061-0*** : COLOR - NATURAL
MATERIAL NUMBERS 43061-1*** : COLOR - BLACK
- 2) FINISH: SEE TERMINAL DWGS.
- 3) FOR ADDITIONAL HOUSING INFORMATION REFER TO DWG. NO. 5195 OR P.S. 5195.
FOR ADDITIONAL TERMINAL INFORMATION REFER TO DWG. NO. 5194 OR 5225, OR P.S. 5194 OR 5225.
- 4) PACKAGING SPECIFICATION: PK-43061-001
- 5) MATES WITH .156/(3.96) CENTER HEADERS AND .045/(1.14) SQUARE PINS.
- 6) CONNECTOR IS DESIGNED FOR USE WITH 18-28 AWG WIRE.
- 7) HOUSING IS DESIGNED FOR USE WITH 5194 (18-22 AWG) AND 5225 (24-28 AWG) TERMINALS.
- 8) THIS PART CONFORMS TO CLASS B REQUIREMENTS OF COSMETIC SPECIFICATION PS-45499-002.

NO. OF CKTS.	DIM. A	DIM. B
2	.357 (9.06)	.156 (3.96)
3	.513 (13.02)	.312 (7.92)
4	.669 (16.98)	.468 (11.88)
5	.824 (20.94)	.624 (15.84)
6	.980 (24.90)	.780 (19.80)
7	1.136 (28.86)	.935 (23.76)
8	1.292 (32.82)	1.091 (27.72)
9	1.448 (36.78)	1.247 (31.68)
10	1.604 (40.74)	1.403 (35.64)
11	1.760 (44.70)	1.560 (39.60)
12	1.916 (48.66)	1.715 (43.56)



2	F5
1	F5
SHT. REV.	

ADD 43061-0040 EC NO: UCP2013-2764 DRWN:MKIPPER 2013/01/08 CHKD:NGUYEN 2013/01/08 APPR:FSMLTH 2013/05/21	QUALITY SYMBOLS	GENERAL TOLERANCES (UNLESS SPECIFIED)	DIMENSION STYLE IN/MM	SCALE 4:1	DESIGN UNITS INCH	THIRD ANGLE PROJECTION
	▽=0	4 PLACES ± --- ± ---	DRAWN BY ROBERTS	DATE 1991/10/17	TITLE SPOX .156/(3.96) RECEPTACLE HOUSING	
	▽=0	3 PLACES ± --- ± .010	CHECKED BY PATEL	DATE 1991/10/17		
	▽=0	2 PLACES ± 0.25 ± .014	1 PLACE ± 0.35 ± ---	APPROVED BY LENZ	DATE 1991/10/17	molex SD-43061
REV	DESCRIPTION	0 PLACE ± ±	MATERIAL NO.	DOCUMENT NO.	SHEET NO.	
F5		ANGULAR ±1/2°	SEE CHART		1 OF 2	
DRAFT WHERE APPLICABLE MUST REMAIN WITHIN DIMENSIONS			THIS DRAWING CONTAINS INFORMATION THAT IS PROPRIETARY TO MOLEX INCORPORATED AND SHOULD NOT BE USED WITHOUT WRITTEN PERMISSION			

13			12			11			10			9			8			7			6			5			4			3			2			1		
HOUSING OPTION: A						HOUSING OPTION: A						HOUSING OPTION: B						HOUSING OPTION: B																				
COLOR WHITE						COLOR BLACK						COLOR WHITE						COLOR BLACK																				
NO. OF CKTS	MATERIAL NO	VOID LOC	NO. OF CKTS	MATERIAL NO	VOID LOC	NO. OF CKTS	MATERIAL NO	VOID LOC	NO. OF CKTS	MATERIAL NO	VOID LOC	NO. OF CKTS	MATERIAL NO	VOID LOC	NO. OF CKTS	MATERIAL NO	VOID LOC	NO. OF CKTS	MATERIAL NO	VOID LOC	NO. OF CKTS	MATERIAL NO	VOID LOC	NO. OF CKTS	MATERIAL NO	VOID LOC	NO. OF CKTS	MATERIAL NO	VOID LOC	NO. OF CKTS	MATERIAL NO	VOID LOC						
2	43061-0002		2	43061-1002		2	43061-0013		2	43061-1013		2	43061-1013		2	43061-1013																						
3	43061-0003		3	43061-1003		3	43061-0014		3	43061-1014		3	43061-1014		3	43061-1014																						
4	43061-0004		4	43061-1004		4	43061-0015		4	43061-1015		4	43061-1015		4	43061-1015																						
5	43061-0005		5	43061-1005		5	43061-0016		5	43061-1016		5	43061-1016		5	43061-1016																						
6	43061-0006		6	43061-1006		6	43061-0017		6	43061-1017		6	43061-1017		6	43061-1017																						
7	43061-0007		7	43061-1007		7	43061-0018		7	43061-1018		7	43061-1018		7	43061-1018																						
8	43061-0008		8	43061-1008		8	43061-0019		8	43061-1019		8	43061-1019		8	43061-1019																						
9	43061-0009		9	43061-1009		9	43061-0020		9	43061-1020		9	43061-1020		9	43061-1020																						
10	43061-0010		10	43061-1010		10	43061-0021		10	43061-1021		10	43061-1021		10	43061-1021																						
11	43061-0011		11	43061-1011		11	43061-0022		11	43061-1022		11	43061-1022		11	43061-1022																						
12	43061-0012		12	43061-1012		12	43061-0023		12	43061-1023		12	43061-1023		12	43061-1023																						
5	43061-0030	3	5	43061-1030	3																																	
7	43061-0031	4	7	43061-1031	4																																	
9	43061-0032	5	9	43061-1032	5																																	
8	43061-0033	7	8	43061-1033	7																																	
9	43061-0034	7	9	43061-1034	7																																	
5	43061-0035	4	5	43061-1035	4																																	
8	43061-0036	2																																				
7	43061-0037	2, 5, 6																																				
7	43061-0038	1, 3, 5																																				
7	43061-0039	3, 5, 7																																				
7	43061-0040	3, 6																																				

SEE SHEET 1 EC NO: UCP2013-2764 DRAWN: KIPPER 2013/01/08 CHKD: NGUYEN 2013/01/08 APPR: F. SMITH 2013/05/21	QUALITY SYMBOLS	GENERAL TOLERANCES (UNLESS SPECIFIED)	DIMENSION STYLE	SCALE	DESIGN UNITS	THIRD ANGLE PROJECTION																	
	= 0 = 0 = 0	<table border="1"> <tr><th colspan="2">mm</th><th>INCH</th></tr> <tr><td>4 PLACES</td><td>± .005</td><td>± .0002</td></tr> <tr><td>3 PLACES</td><td>± .005</td><td>± .0002</td></tr> <tr><td>2 PLACES</td><td>± .005</td><td>± .0002</td></tr> <tr><td>1 PLACE</td><td>± .005</td><td>± .0002</td></tr> <tr><td>0 PLACE</td><td>± .005</td><td>± .0002</td></tr> </table>	mm		INCH		4 PLACES	± .005	± .0002	3 PLACES	± .005	± .0002	2 PLACES	± .005	± .0002	1 PLACE	± .005	± .0002	0 PLACE	± .005	± .0002	IN/MM	4:1
	mm		INCH																				
	4 PLACES	± .005	± .0002																				
	3 PLACES	± .005	± .0002																				
2 PLACES	± .005	± .0002																					
1 PLACE	± .005	± .0002																					
0 PLACE	± .005	± .0002																					
REV	DESCRIPTION	DRAFT WHERE APPLICABLE MUST REMAIN WITHIN DIMENSIONS	DRAWN BY: ROBERTS CHECKED BY: PATEL APPROVED BY: LENZ	DATE: 1991/11/06 DATE: 1991/11/06 DATE: 1991/11/06	TITLE: SPOX .156/(3,96) RECEPTACLE HOUSING																		
F5		ANGULAR ±1/2°	SEE CHART		molex DOCUMENT NO. SD-43061	SHEET NO. 2 OF 2																	
			MATERIAL NO. SEE CHART SIZE C		THIS DRAWING CONTAINS INFORMATION THAT IS PROPRIETARY TO MOLEX INCORPORATED AND SHOULD NOT BE USED WITHOUT WRITTEN PERMISSION																		