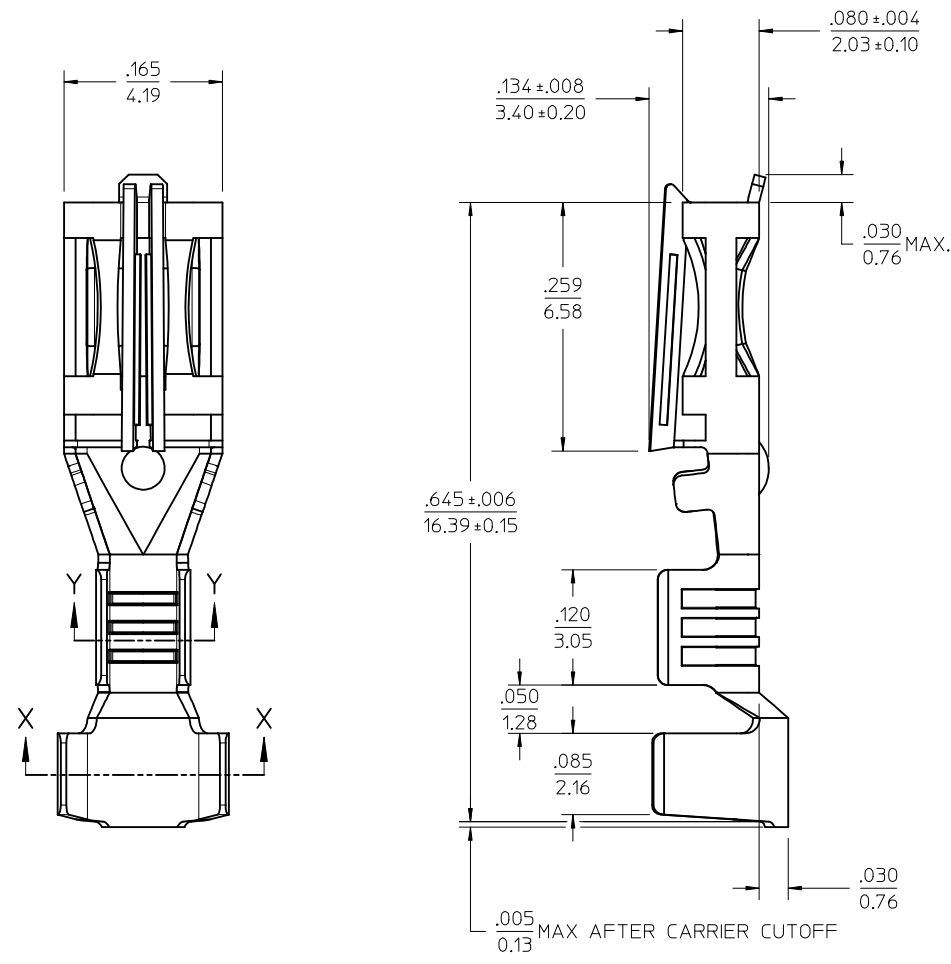
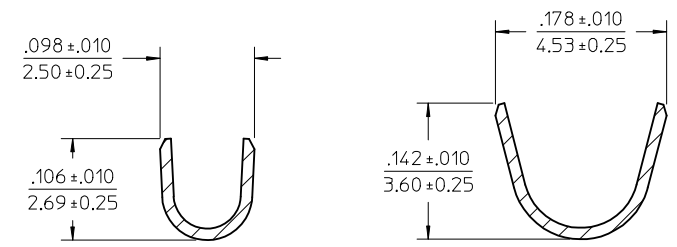


CARRIER STRIP PROGRESSION



NOTES:

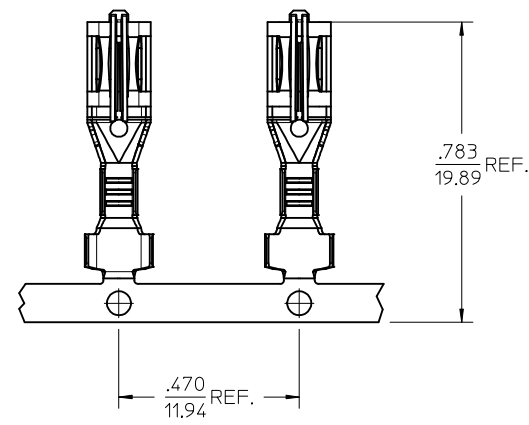
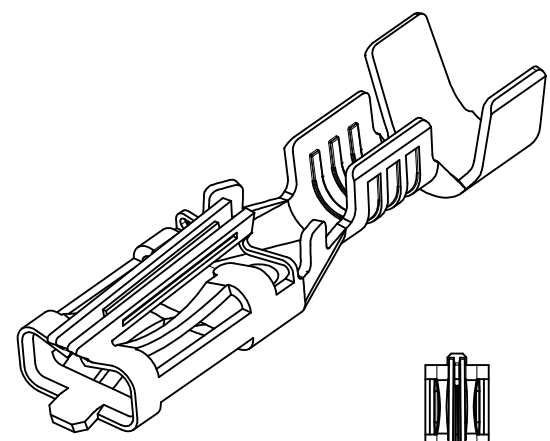
1. MATERIAL: C26000 BRASS.
2. FINISH: 20 MICRINCH (0.5 MICROMETER) MINIMUM HOT TIN DIP OVERALL.
3. PRODUCT SPECIFICATION: PS-43374-001
4. PACKAGING: TERMINALS WOUND ON 24" REELS WITH PAPER INTERLEAF.
5. THIS TERMINAL FOR USE WITH 18-20 AWG STRANDED WIRE, UL 1007 OR UL 1015 STYLES, .071-.112 INSULATION DIAMETER. FOR FURTHER INFORMATION REFER TO MOLEX APPLICATION TOOLING SPECIFICATION.
6. TERMINAL MATES TO .125/(3.18 WIDE X .020/(0.51) THICK FLAT BLADE TERMINALS OR MOLEX 43178 SERIES CRIMP TERMINALS.



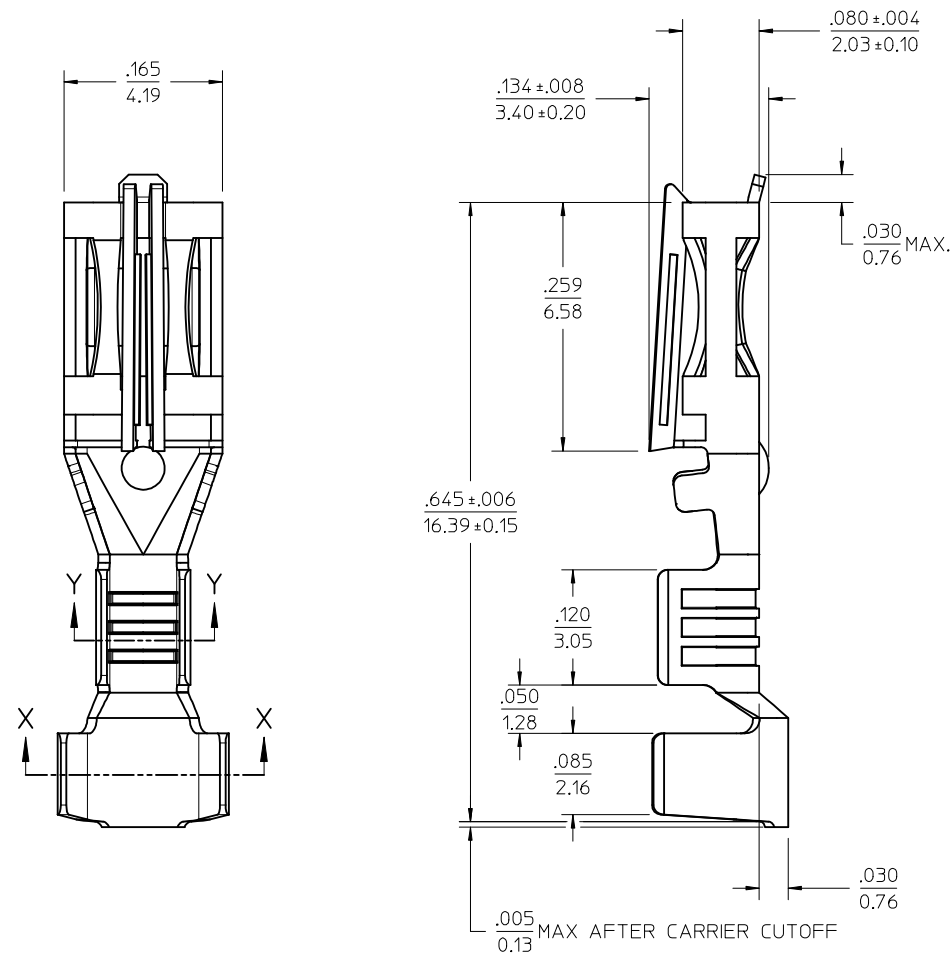
SECTION Y-Y
CONDUCTOR CRIMP

SECTION X-X
INSULATION CRIMP

CORRECT TOLERANCE EC NO: UCP2014-5466 2014/07/09 DRAWN:JDOX CHKD:ANDERSON APPR:FSMITH 2014/07/09 2014/07/17	QUALITY SYMBOLS ▽=0 ▽=0 ▽=0	GENERAL TOLERANCES (UNLESS SPECIFIED)		DIMENSION STYLE IN/MM		SCALE 10:1	DESIGN UNITS INCH	THIRD ANGLE PROJECTION		
		4 PLACES ± --- ± ---	3 PLACES ± --- ± .005	2 PLACES ± 0.13 ± .010	1 PLACE ± 0.25 ± ---	0 PLACE ± --- ± ---	DRAWN BY BWIRKUS		DATE 09-09-2009	
		DRAFT WHERE APPLICABLE MUST REMAIN WITHIN DIMENSIONS					CHECKED BY BWIRKUS		DATE 09-09-2009	
		ANGULAR ± --- °					APPROVED BY APATEL		DATE 09-09-2009	
A3	REV	MATERIAL NO. 433742001		DOCUMENT NO. SD-43374-301		SHEET NO. 1 OF 1		THIS DRAWING CONTAINS INFORMATION THAT IS PROPRIETARY TO MOLEX INCORPORATED AND SHOULD NOT BE USED WITHOUT WRITTEN PERMISSION		

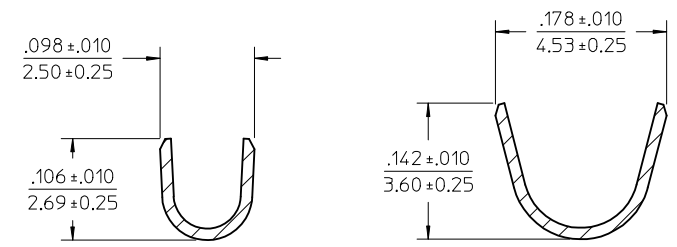


CARRIER STRIP PROGRESSION



NOTES:

1. MATERIAL: C26000 BRASS.
2. FINISH: 20 MICRINCH (0.5 MICROMETER) MINIMUM HOT TIN DIP OVERALL.
3. PRODUCT SPECIFICATION: PS-43374-001
4. PACKAGING: TERMINALS WOUND ON 24" REELS WITH PAPER INTERLEAF.
5. THIS TERMINAL FOR USE WITH 18-20 AWG STRANDED WIRE, UL 1007 OR UL 1015 STYLES, .071-.112 INSULATION DIAMETER. FOR FURTHER INFORMATION REFER TO MOLEX APPLICATION TOOLING SPECIFICATION.
6. TERMINAL MATES TO .125/(3.18 WIDE X .020/(0.51) THICK FLAT BLADE TERMINALS OR MOLEX 43178 SERIES CRIMP TERMINALS.



SECTION Y-Y
CONDUCTOR CRIMP

SECTION X-X
INSULATION CRIMP

CORRECT TOLERANCE EC NO: UCP2014-5466 2014/07/09 DRWN:JDOX CHKD:ANDERSON APPR:FSMITH 2014/07/09 2014/07/17	QUALITY SYMBOLS ▽=0 ▽=0 ▽=0	GENERAL TOLERANCES (UNLESS SPECIFIED)		DIMENSION STYLE IN/MM		SCALE 10:1	DESIGN UNITS INCH	THIRD ANGLE PROJECTION		
		4 PLACES ± --- ± ---	3 PLACES ± --- ± .005	2 PLACES ± 0.13 ± .010	1 PLACE ± 0.25 ± ---	0 PLACE ± --- ± ---	DRAWN BY DATE BWIRKUS 09-09-2009		TITLE SABRE 18-20AWG CRIMP FEM W/O TPA; .125 WIDE TAB; UL1007 OR 1015 WIRE	
		DRAFT WHERE APPLICABLE MUST REMAIN WITHIN DIMENSIONS					CHECKED BY DATE BWIRKUS 09-09-2009		APPROVED BY DATE APATEL 09-09-2009	
		ANGULAR ± --- °		MATERIAL NO. 433742001		DOCUMENT NO. SD-43374-301		SHEET NO. 1 OF 1		