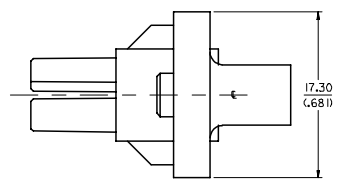
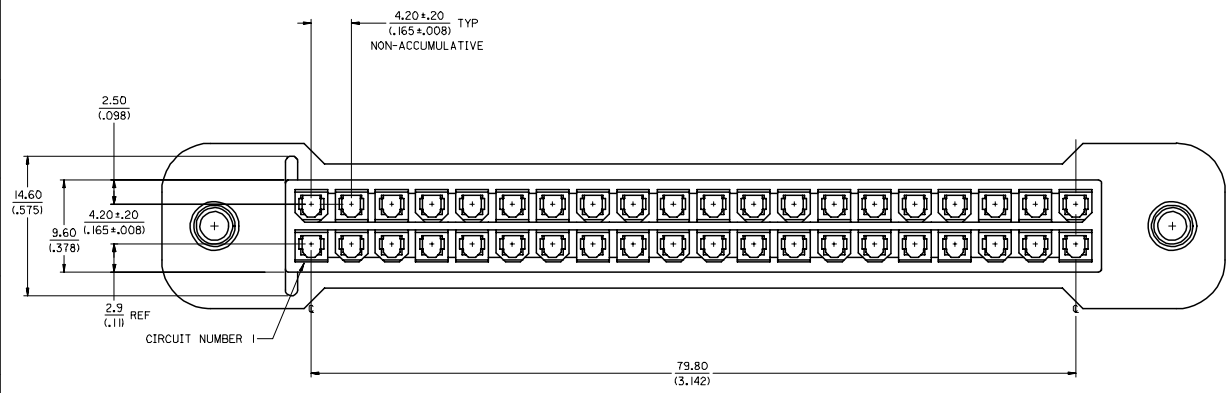


20 19 18 17 16 15 14 13 12 11 10 9 8 7 6 5 4 3 2 1

M
L
K
J
I
H
G
F
E
D
C
B
A



- NOTES:**
1. MATERIAL:
NYLON 46, GLASS-FILLED, UL94V-0,
COLOR - BLACK
 2. FINISH NONE
 3. PRODUCT SPECIFICATION: PS-43759-0001
 4. PART IS FOR USE WITH 5556, 44476 AND 45750 SERIES TERMINALS.
 5. THIS CONNECTOR ALLOWS FOR .050/(1.27) MAX. MISALIGNMENT IN ANY DIRECTION.
 6. A MAXIMUM TOLERANCE OF .050/(1.27) ALLOWS FOR 2 POINTS OF ELECTRICAL CONTACT. A MAXIMUM TOLERANCE OF .020/(.51) ALLOWS FOR 4 POINTS OF CONTACT.
 7. PART MATES WITH MINI-FIT B.M.I. HEADER #43973.
 8. CONNECTOR ASSEMBLIES ARE NOT TO BE MATED OR UNMATED WHILE CIRCUITS ARE LIVE.
 9. PANEL SHOULD BE PUNCHED IN THE DIRECTION OF CONNECTOR INSERTION.
 10. PART BOW SPECIFICATION MEASURED AT DATUM [-A-] = .15/(.006) PER INCH MAXIMUM. BOW DIRECTION DEFINED BY FIGURE 1.

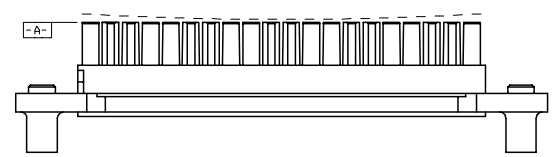
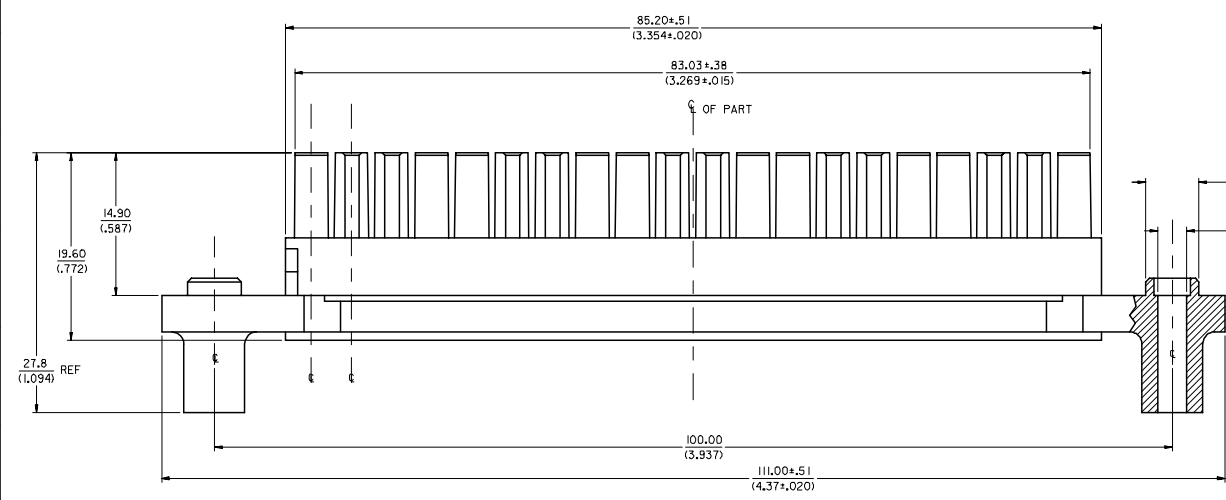
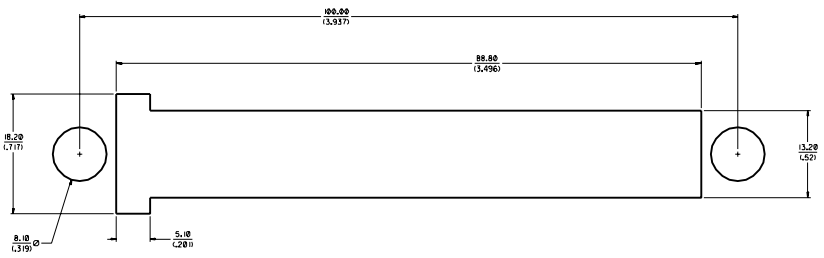


FIGURE 1

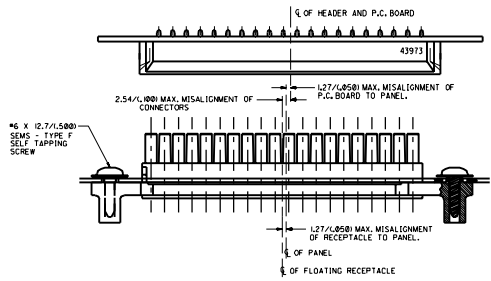
2	A
1	A4
SHEET REV	

REV NOTES 3 & 4 EC NO: UCP2006-2160 DRAWN: ADMANIL 2006/03/28 CHKD: BOPULAR 2006/03/22 APPR: JCOMERCI 2006/03/23	QUALITY SYMBOLS	GENERAL TOLERANCES (UNLESS SPECIFIED)	DIMENSION STYLE	SCALE	DESIGN UNITS	THIRD ANGLE PROJECTION															
	$\nabla=0$ $\nabla=0$	<table border="1"> <tr> <th></th> <th>mm</th> <th>INCH</th> </tr> <tr> <td>4 PLACES</td> <td>± .15</td> <td>± .005</td> </tr> <tr> <td>3 PLACES</td> <td>± .10</td> <td>± .004</td> </tr> <tr> <td>2 PLACES</td> <td>± 0.38</td> <td>± .015</td> </tr> <tr> <td>1 PLACE</td> <td>± .50</td> <td>± .020</td> </tr> </table>		mm	INCH	4 PLACES	± .15	± .005	3 PLACES	± .10	± .004	2 PLACES	± 0.38	± .015	1 PLACE	± .50	± .020	MM/IN	4:1	METRIC	
		mm	INCH																		
	4 PLACES	± .15	± .005																		
3 PLACES	± .10	± .004																			
2 PLACES	± 0.38	± .015																			
1 PLACE	± .50	± .020																			
DESCRIPTION	<table border="1"> <tr> <th>DATE</th> <th>BY</th> </tr> <tr> <td>1998/01/14</td> <td>PEARSON</td> </tr> <tr> <td>1998/01/14</td> <td>MUELLER</td> </tr> <tr> <td>1998/01/14</td> <td>EDGLEY</td> </tr> </table>	DATE	BY	1998/01/14	PEARSON	1998/01/14	MUELLER	1998/01/14	EDGLEY	TITLE	PANEL MOUNT RECEPTACLE 40 CKT BLIND MATE MINI-FIT SERIES										
DATE	BY																				
1998/01/14	PEARSON																				
1998/01/14	MUELLER																				
1998/01/14	EDGLEY																				
DRAFT WHERE APPLICABLE MUST REMAIN WITHIN DIMENSIONS	MATERIAL NO. 439740002	DOCUMENT NO. SD-43974-002	MOLEX INCORPORATED																		
SIZE D	THIS DRAWING CONTAINS INFORMATION THAT IS PROPRIETARY TO MOLEX INCORPORATED AND SHOULD NOT BE USED WITHOUT WRITTEN PERMISSION																				
SHEET NO. 1 OF 2																					

19 18 17 16 15 14 13 12 11 10 9 8 7 6 5 4 3 2 1



RECOMMENDED PANEL CUT-OUT FOR 1.27/0.38/0.650(.012) THICK PANEL
(SEE NOTE 9)



ALIGNMENT TOLERANCES FOR 1.27(0.050) MAX. BOARD-TO-PANEL MISALIGNMENT
IN 1.27(0.050) RECEPTACLE FLOAT

SEE SHEET 1 FOR: NO. OF CHN APPLS.	QUALITY SYMBOLS	GENERAL TOLERANCES UNLESS SPECIFIED	SCALE	DESIGN UNITS	THIRD ANGLE PROJECTION	DIMENSIONS				SHT	REV		
	4 PLACES ±0.15 3 PLACES ±0.15 2 PLACES ±0.38 1 PLACE ±0.38	2.--- 2.--- 2.--- 2.---	mm INCH INCH INCH	1:1 1:1 1:1 1:1	mm INCH INCH INCH	1:1 1:1 1:1 1:1	mm INCH mm INCH mm INCH mm INCH	mm INCH mm INCH mm INCH mm INCH	mm INCH mm INCH mm INCH mm INCH	mm INCH mm INCH mm INCH mm INCH	mm INCH mm INCH mm INCH mm INCH	mm INCH mm INCH mm INCH mm INCH	mm INCH mm INCH mm INCH mm INCH
CRITICAL CRITICAL	4 PLACES ±0.15 3 PLACES ±0.15 2 PLACES ±0.38 1 PLACE ±0.38	2.--- 2.--- 2.--- 2.---	1:1 1:1 1:1 1:1	mm INCH INCH INCH	1:1 1:1 1:1 1:1	mm INCH mm INCH mm INCH mm INCH	mm INCH mm INCH mm INCH mm INCH	mm INCH mm INCH mm INCH mm INCH	mm INCH mm INCH mm INCH mm INCH	mm INCH mm INCH mm INCH mm INCH	mm INCH mm INCH mm INCH mm INCH	mm INCH mm INCH mm INCH mm INCH	
APPROVED BY & DATE EDGLEY 01/13/98	CHECKED BY & DATE MUELLER 01/15/98	DRAWN BY & DATE PEARSON 01/13/98	CD FILE NAME S4397404.DCN	MATERIAL NO. 439740002	DRAWING NO. SD-43974-002	MOLEX INCORPORATED				SHEET NO. 2	SIZE D		
DRAFT WHEN APPLICABLE MUST REMAIN WITHIN DIMENSIONS	THIS DRAWING CONTAINS INFORMATION THAT IS PROPRIETARY TO MOLEX INCORPORATED AND SHOULD NOT BE USED WITHOUT WRITTEN PERMISSION.												