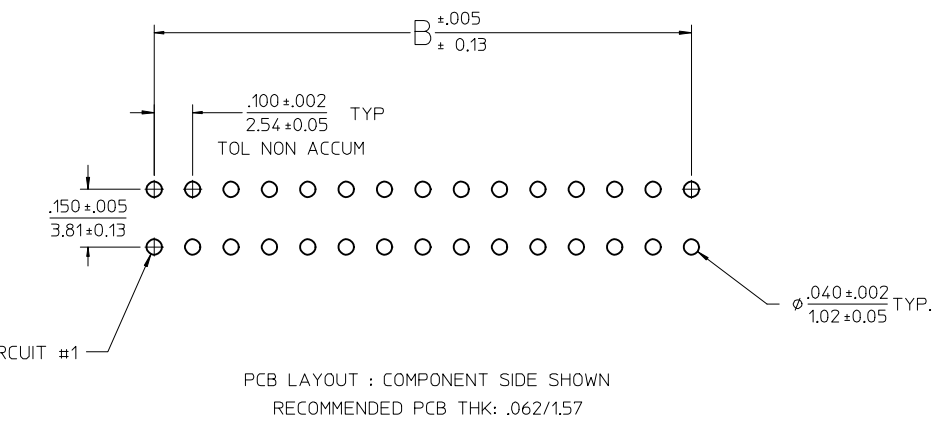
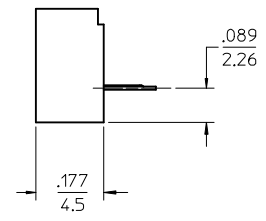
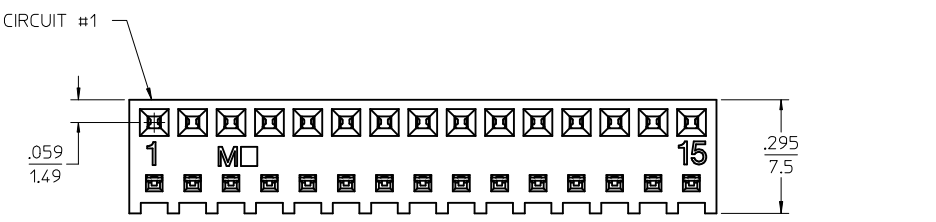


CKTS	DIM A	DIM B
2	.230	.100
	5.84	2.54
3	.330	.200
	8.38	5.08
4	.430	.300
	10.92	7.62
5	.530	.400
	13.46	10.16
6	.630	.500
	16.00	12.70
7	.730	.600
	18.54	15.24
8	.830	.700
	21.08	17.78
9	.930	.800
	23.62	20.32
10	1.030	.900
	26.16	22.86
11	1.130	1.000
	28.70	25.40
12	1.230	1.100
	31.24	27.94
13	1.330	1.200
	33.78	30.48
14	1.430	1.300
	36.32	33.02
15	1.530	1.400
	38.86	35.56
16	1.630	1.500
	41.40	38.10



NOTES :

- MATERIAL -
HOUSING : HIGH TEMP NYLON, GLASS-FILLED, UL94V-0, COLOR - BLACK
TERMINAL : MODIFIED TIN/BRASS ALLOY
- FINISH - (SEE CHART)
A-TIN: .000200/(0.00508) MINIMUM
B-SELECT GOLD: .000015/(0.00038) MIN., SELECT TIN: .000100/(0.00254) MIN., OVER NICKEL
C-SELECT GOLD: .000030/(0.00076) MIN., SELECT TIN: .000100/(0.00254) MIN., OVER NICKEL
- PRODUCT SPECIFICATION : PS-44812-001
- PACKAGING SPECIFICATION : TRAY PACK PER PK-44812-001
- 15 CIRCUIT PART SHOWN SEE SHEET 2 FOR OTHER CIRCUIT SIZES.
- THIS PART CONFORMS TO CLASS B REQUIREMENTS OF COSMETIC SPECIFICATION PS-45499-002.
- TEXT ON PART IS FOR REFERENCE ONLY. TEXT AND TEXT LOCATION MAY VARY DEPENDING ON PART NUMBER AND/OR TOOL.

NOTE 7 ADDED EC NO: UCP2017-2793 TIDRWINGS 2017/06/29 CHKD: SHWARG 2017/07/28 APPR: SHWARG	QUALITY SYMBOLS	GENERAL TOLERANCES (UNLESS SPECIFIED)		DIMENSION STYLE IN/MM		SCALE 4:1	DESIGN UNITS INCH	THIRD ANGLE PROJECTION	
	▽=0	mm	INCH	DRAWN BY	DATE	TITLE KK 100 PCB CONN ASSY LOW PROFILE			
	▽=0	4 PLACES ± ---	± ---	MUELLER	2001/09/22				
	▽=0	3 PLACES ± ---	± .010	CHECKED BY	DATE	DOCUMENT NO. SD-44812-001			
	▽=0	2 PLACES ± 0.25	± .015	MUELLER	2001/09/23				
▽=0	1 PLACE ± 0.38	± ---	APPROVED BY	DATE	SHEET NO. 1 OF 2				
▽=0	0 PLACE ±	±	MARGULIS	2001/09/24					
ANGULAR ±1/2°		DRAFT WHERE APPLICABLE MUST REMAIN WITHIN DIMENSIONS		SEE CHART		THIS DRAWING CONTAINS INFORMATION THAT IS PROPRIETARY TO MOLEX INCORPORATED AND SHOULD NOT BE USED WITHOUT WRITTEN PERMISSION			

FINISH: A (TIN)	
CKTS	MATERIAL NO.
2	44812-0002
3	44812-0003
4	44812-0004
5	44812-0005
6	44812-0006
7	44812-0007
8	44812-0008
9	44812-0009
10	44812-0010
11	44812-0011
12	44812-0012
13	44812-0013
14	44812-0014
15	44812-0015
16	44812-0016

FINISH: B (15 GOLD)	
CKTS	MATERIAL NO.
2	44812-0020
3	44812-0021
4	44812-0022
5	44812-0023
6	44812-0024
7	44812-0025
8	44812-0026
9	44812-0027
10	44812-0028
11	44812-0029
12	44812-0030
13	44812-0031
14	44812-0032
15	44812-0033
16	44812-0034

FINISH: C (30 GOLD)	
CKTS	MATERIAL NO.
2	44812-0040
3	44812-0041
4	44812-0042
5	44812-0043
6	44812-0044
7	44812-0045
8	44812-0046
9	44812-0047
10	44812-0048
11	44812-0049
12	44812-0050
13	44812-0051
14	44812-0052
15	44812-0053
16	44812-0054

SEE SHEET 1 EC NO: UCP2017-2793 DRAWINGS 2017/06/29 CHKD: APPR: ISHWARG 2017/07/28 REV:	QUALITY SYMBOLS	GENERAL TOLERANCES (UNLESS SPECIFIED)	DIMENSION STYLE	SCALE	DESIGN UNITS	THIRD ANGLE PROJECTION
	▽=0	mm INCH	IN/MM	1:1	INCH	
	▽=0	4 PLACES ± --- ± ---	DRAWN BY DATE	TITLE KK 100 PCB CONN ASSY LOW PROFILE		
	▽=0	3 PLACES ± --- ± .010	MUELLER 2001/09/22			
	2 PLACES ± 0.25 ± .015	CHECKED BY DATE	DOCUMENT NO. SD-44812-001			
	1 PLACE ± 0.38 ± ---	MUELLER 2001/09/23				
	0 PLACE ± ±	APPROVED BY DATE	SHEET NO. 2 OF 2			
	ANGULAR ±1/2°	MARGULIS 2001/09/24				
	DRAFT WHERE APPLICABLE MUST REMAIN WITHIN DIMENSIONS	MATERIAL NO.	THIS DRAWING CONTAINS INFORMATION THAT IS PROPRIETARY TO MOLEX INCORPORATED AND SHOULD NOT BE USED WITHOUT WRITTEN PERMISSION			
		SEE CHART				