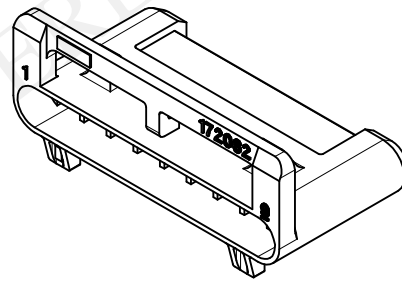
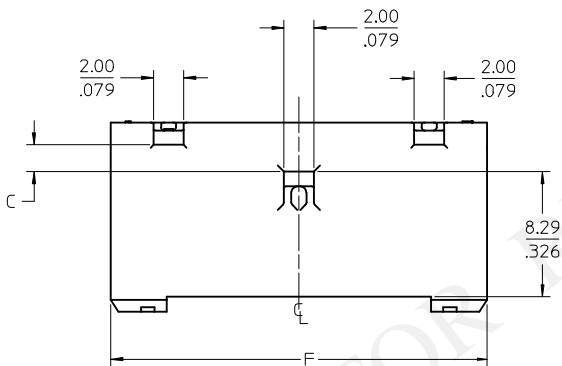
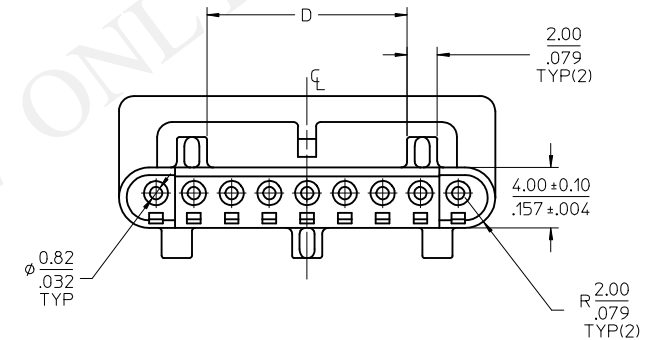
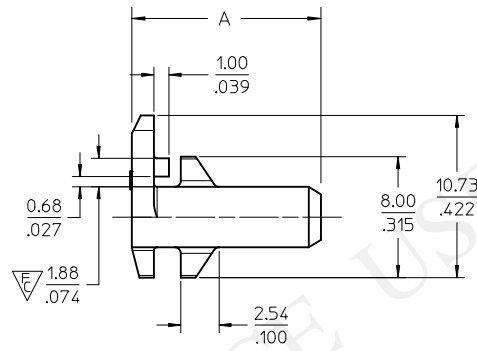
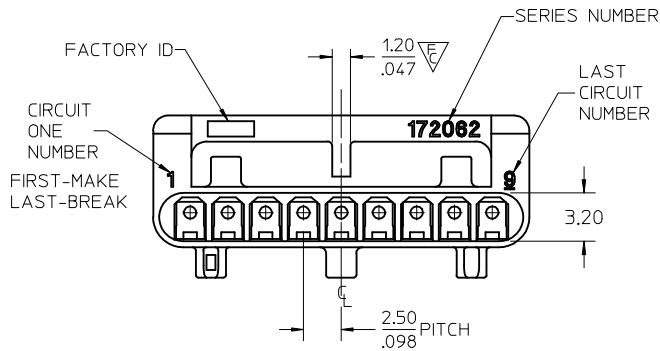


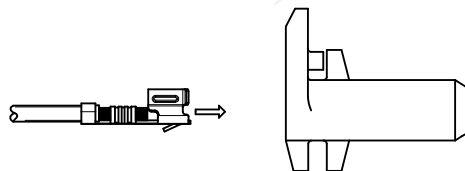
172062-1109	9	1	12.53 / .493	1.78 / .070	13.25 / .522	15.25 / .600	24.90 / .980	23.60 / .929	1.35 / .053
172062-1009	9	0	12.53 / .493	1.78 / .070	13.25 / .522	15.25 / .600	24.90 / .980	23.60 / .929	1.35 / .053
172062-1108	8	1	12.53 / .493	1.78 / .070	10.75 / .423	12.75 / .502	22.40 / .882	21.10 / .831	1.35 / .053
172062-1008	8	0	12.53 / .493	1.78 / .070	10.75 / .423	12.75 / .502	22.40 / .882	21.10 / .831	1.35 / .053
172062-1107	7	1	12.53 / .493	1.78 / .070	8.25 / .325	10.25 / .404	19.90 / .783	18.60 / .732	1.35 / .053
172062-1007	7	0	12.53 / .493	1.78 / .070	8.25 / .325	10.25 / .404	19.90 / .783	18.60 / .732	1.35 / .053
172062-1106	6	1	12.00 / .472	1.25 / .049	5.75 / .226	7.75 / .305	17.40 / .685	16.10 / .634	1.35 / .053
172062-1006	6	0	12.00 / .472	1.25 / .049	5.75 / .226	7.75 / .305	17.40 / .685	16.10 / .634	1.35 / .053
MATL NO*	CKT	MATL	A	C ±0.13/±.005	D	E	F	G	PANEL THICKNESS

9 CKT SHOWN  
SEE CHART FOR OTHER CKT SIZES

\*PN LEGEND: 172062-1XYZ  
X = MATL (SEE NOTE 1)  
YZ = CIRCUIT SIZE

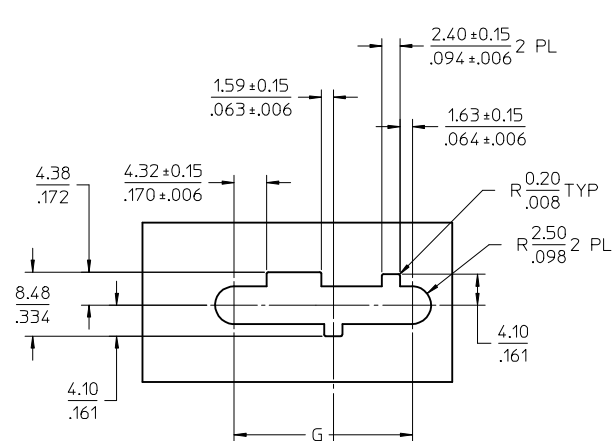


- NOTES:
- MATERIAL:
    - 0 = NYLON, UL94V-0, LOW HALOGEN, COLOR: BLACK.
    - 1 = NYLON, UL94V-2, GLOW-WIRE CAPABLE, COLOR: BLACK.
  - FINISH: N/A
  - PRODUCT SPECIFICATION: PS-46626-001 (PENDING).
  - PACKAGING: TBD PCS PER SHIPPING CARTON
  - MATES WITH: 46831 PLUG HOUSING.
  - FOR USE WITH 46626 FEMALE CRIMP TERMINALS
  - THIS PART CONFORMS TO CLASS B REQUIREMENTS OF COSMETIC SPEC PS-45499-002.
  - SEE PAGE 2 OF 2 FOR PANEL CUTOUT DIMENSIONS AND THE ALLOWED PANEL TO PANEL MISALIGNMENT.
  - USE MOLEX EXTRACTION TOOL 63813-1400 TO REMOVE TERMINAL WITHOUT DAMAGING THE HOUSING. RELOAD HOUSING WITH NEW TERMINAL ONLY. EXTRACTED TERMINALS ARE NOT REUSABLE.

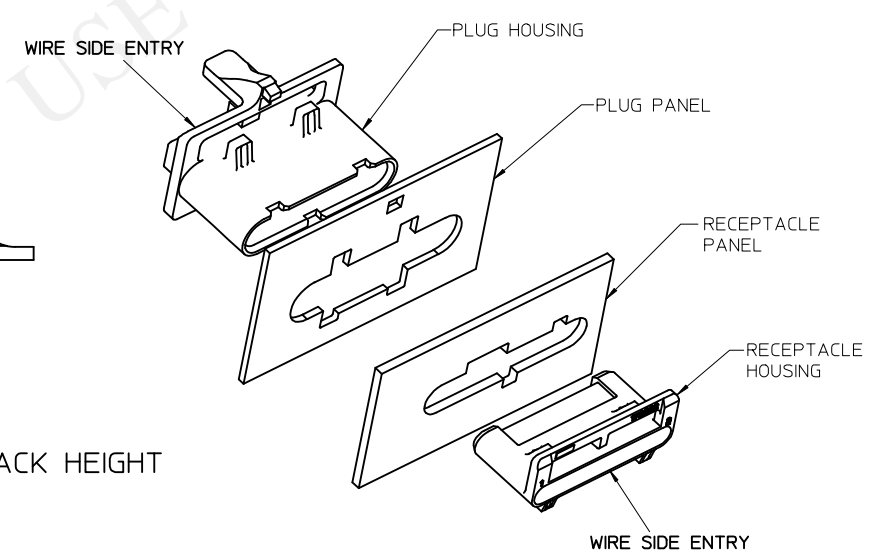
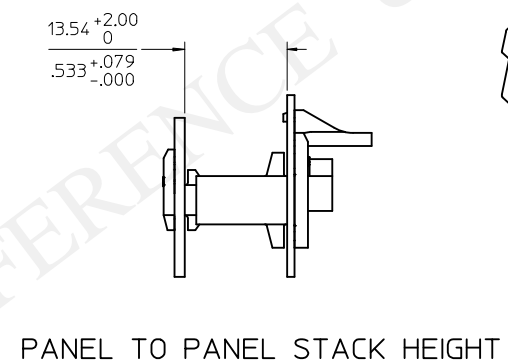
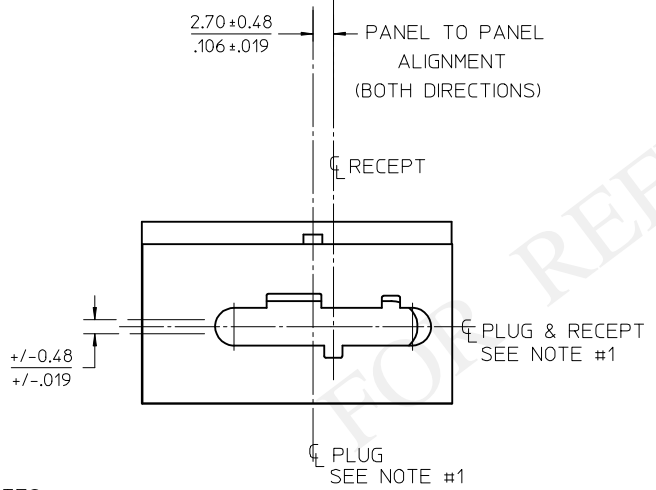
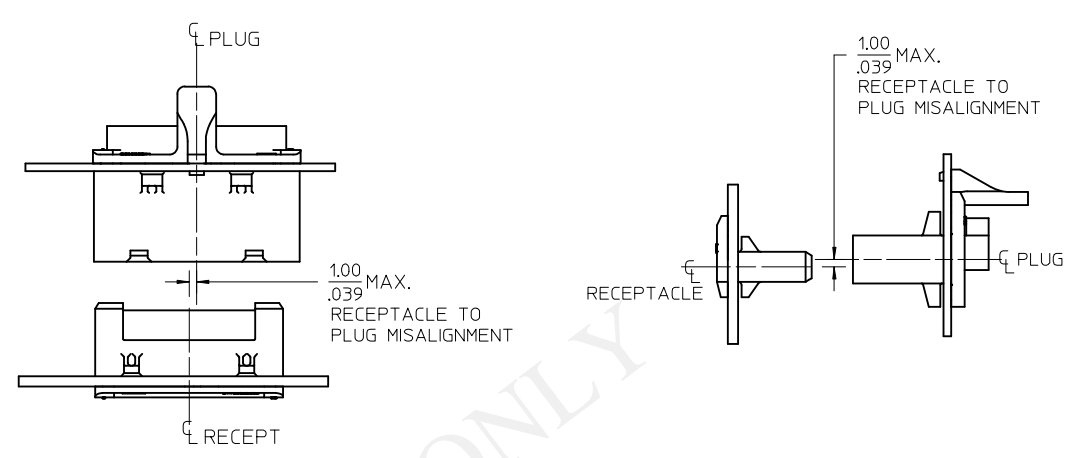


TERMINALS ARE TO BE ORIENTED AND LOADED INTO THE HOUSING AS SHOWN ABOVE

CREATE DRAWING EC NO: UCP2014-0988 DRAWING: NGUYEN 2013/09/03 CHKD: BANDERSON 2013/09/03 APPR: NGUYEN 2013/09/11	QUALITY SYMBOLS ▽=0 ▽=3 ▽=0	GENERAL TOLERANCES (UNLESS SPECIFIED)		DIMENSION STYLE MM/IN		SCALE 4:1	DESIGN UNITS METRIC	THIRD ANGLE PROJECTION
		4 PLACES ± --- ± --- 3 PLACES ± --- ± .010 2 PLACES ± 0.25 ± .014 1 PLACE ± 0.35 ± --- 0 PLACE ± ±	mm INCH ± --- ± --- ± .010 ± .014 ± 0.25 ± --- ± ±	DRAWN BY NGUYEN	DATE 2013/09/03	CHECKED BY BANDERSON	DATE 2013/09/03	TITLE SAAVIK SINGLE ROW RECEPTACLE HOUSING
1	REV	DRAFT WHERE APPLICABLE MUST REMAIN WITHIN DIMENSIONS		MATERIAL NO. SEE CHART		DOCUMENT NO. SD-172062-100	SHEET NO. 1 OF 2	
THIS DRAWING CONTAINS INFORMATION THAT IS PROPRIETARY TO MOLEX INCORPORATED AND SHOULD NOT BE USED WITHOUT WRITTEN PERMISSION								



PANEL CUTOUT  
WIRE ENTRY SIDE VIEW  
PANEL THICKNESS: SEE CHART



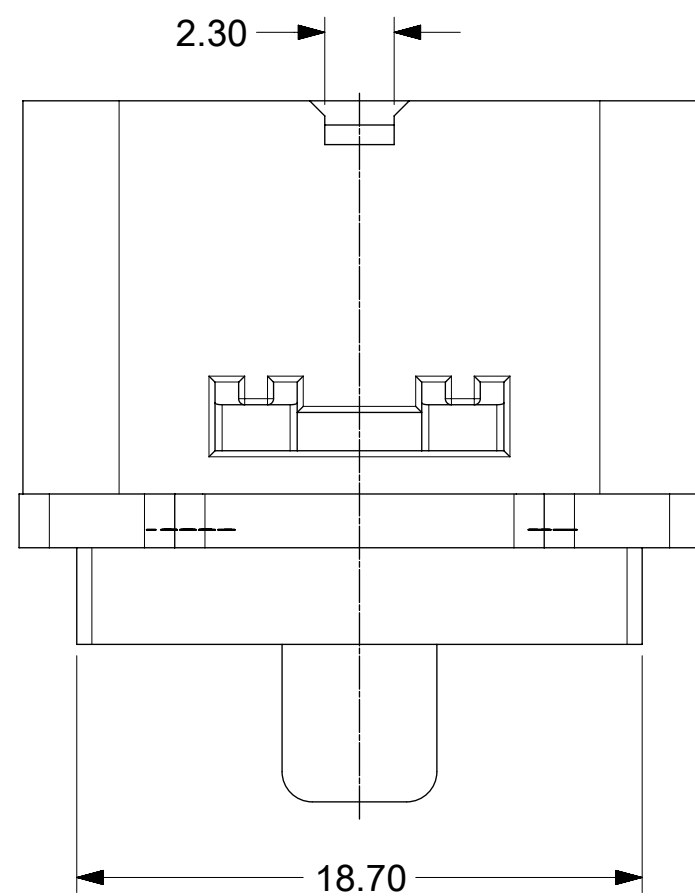
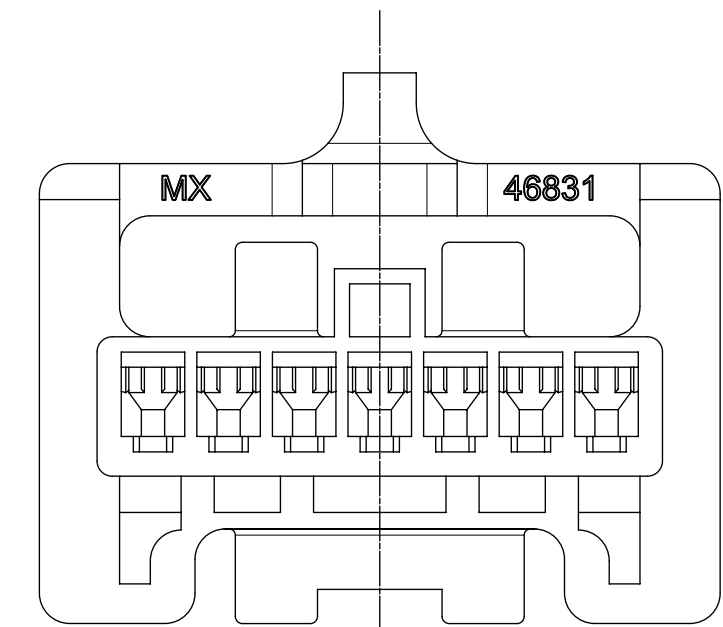
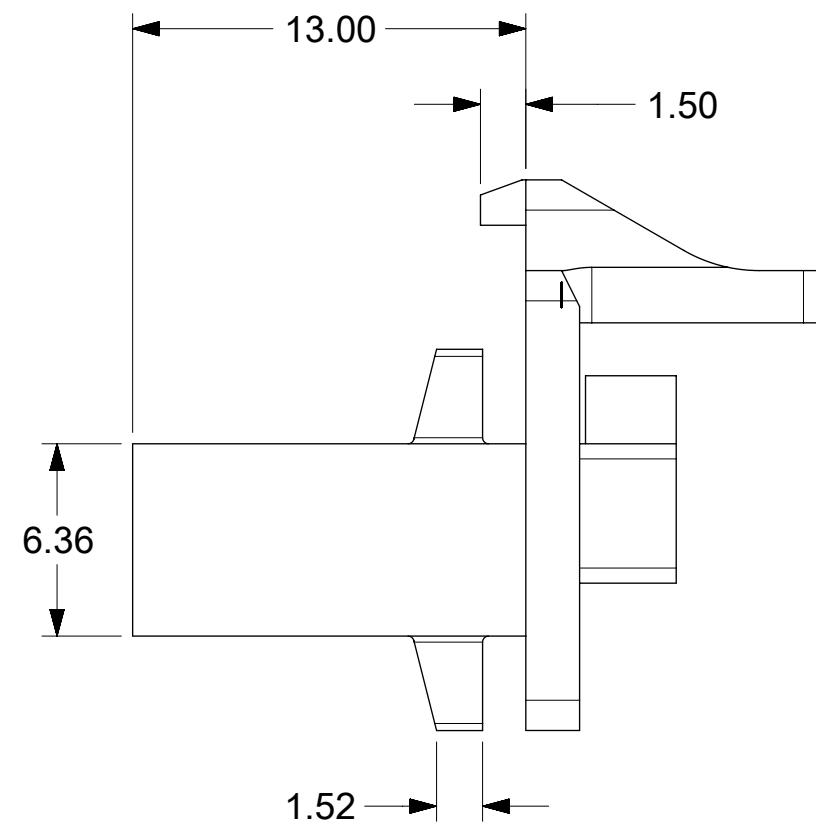
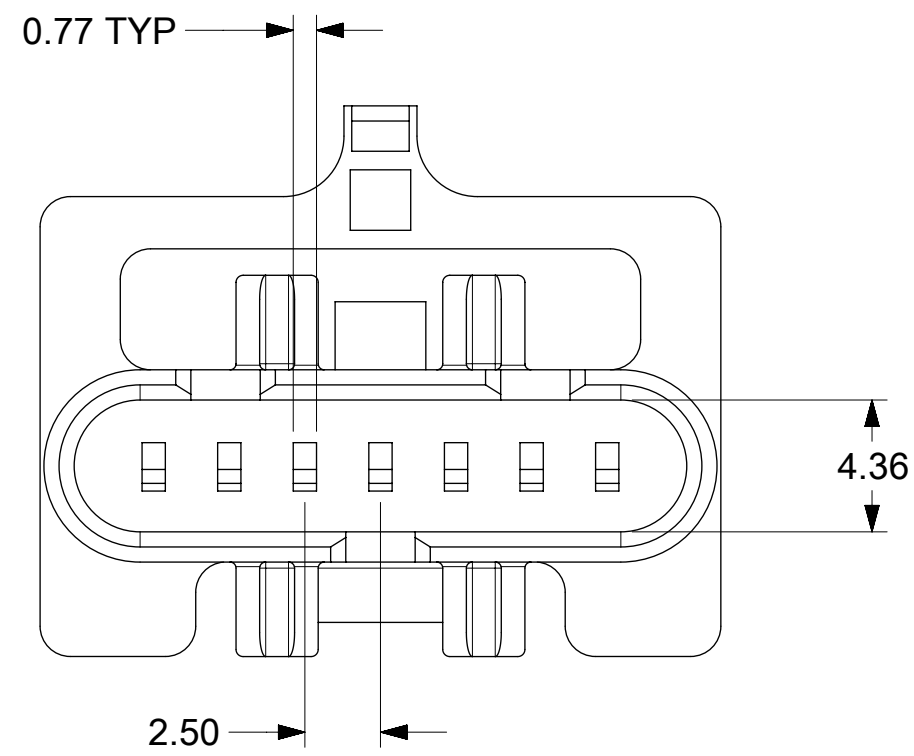
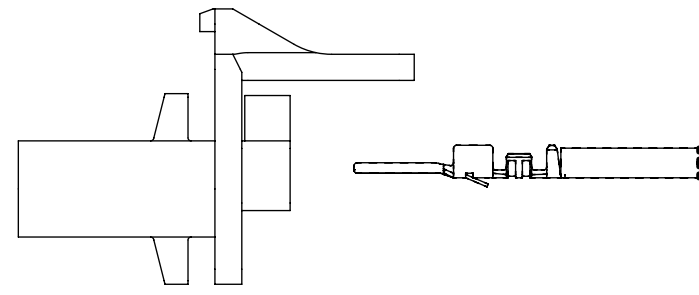
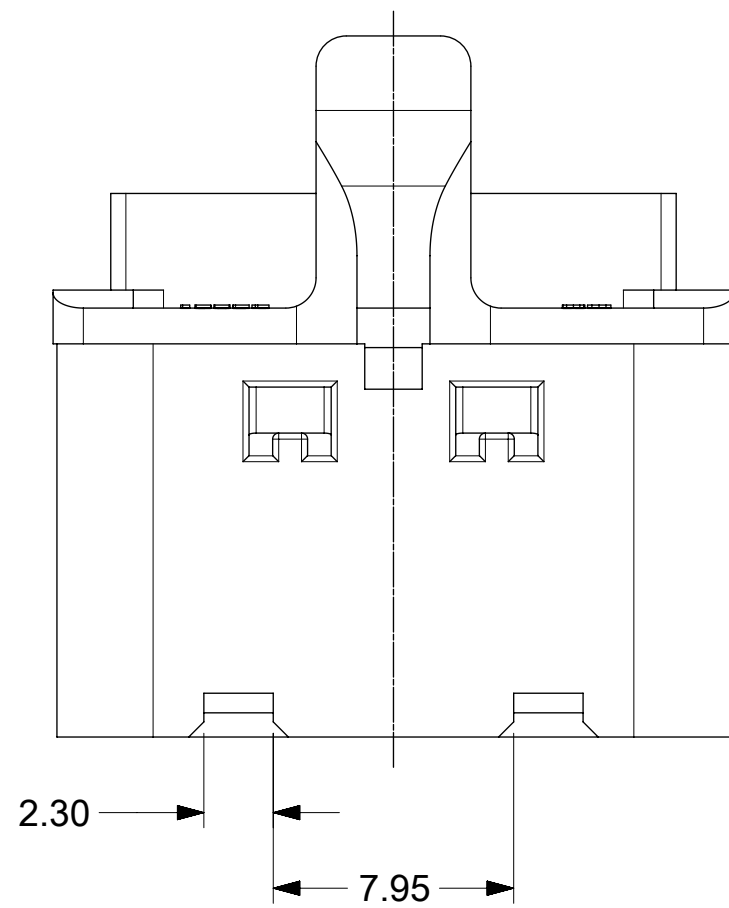
- NOTES:
- TO ALIGN 46831 PANEL CUTOUT WITH 172062 PANEL CUTOUT: ALIGN HORIZONTAL CENTERLINES AND KEEP 2.70MM BETWEEN VERTICAL CENTERLINES OF THE PANEL CUTOUT IN THE DRAWING SD-46831-\*
  - TERMINALS MUST BE ALLOWED TO FLOAT FREELY WITHIN EACH CORE DO NOT TIE WIRES TOGETHER TIGHTLY, ALLOW WIRE TO MOVE.

SEE SHEET 1 EC NO: UCP2014-0988 DRAWING: NGUYEN 2013/09/03 CHKD: BANDERSON 2013/09/03 APPR: NGUYEN 2013/09/11	QUALITY SYMBOLS ∇=0 ∇=0 ∇=0	GENERAL TOLERANCES (UNLESS SPECIFIED)		DIMENSION STYLE MM/IN		SCALE 2:1	DESIGN UNITS METRIC	THIRD ANGLE PROJECTION	
		4 PLACES ± ---	± ---	DRAWN BY	DATE	TITLE SAAVIK SINGLE ROW RECEPTACLE HOUSING <b>molex</b>			
		3 PLACES ± ---	± .010	CHECKED BY	DATE				
		2 PLACES ± 0.25	± .014	APPROVED BY	DATE	DOCUMENT NO. SD-172062-100	SHEET NO. 2 OF 2		
1 PLACE ± 0.35	± ---	DRAFT WHERE APPLICABLE MUST REMAIN WITHIN DIMENSIONS		SEE SHEET 1	THIS DRAWING CONTAINS INFORMATION THAT IS PROPRIETARY TO MOLEX INCORPORATED AND SHOULD NOT BE USED WITHOUT WRITTEN PERMISSION				
0 PLACE ±	±			MATERIAL NO.					

TERMINALS TO BE ORIENTED AND LOADED INTO THE HOUSING AS SHOWN BELOW

NOTES:

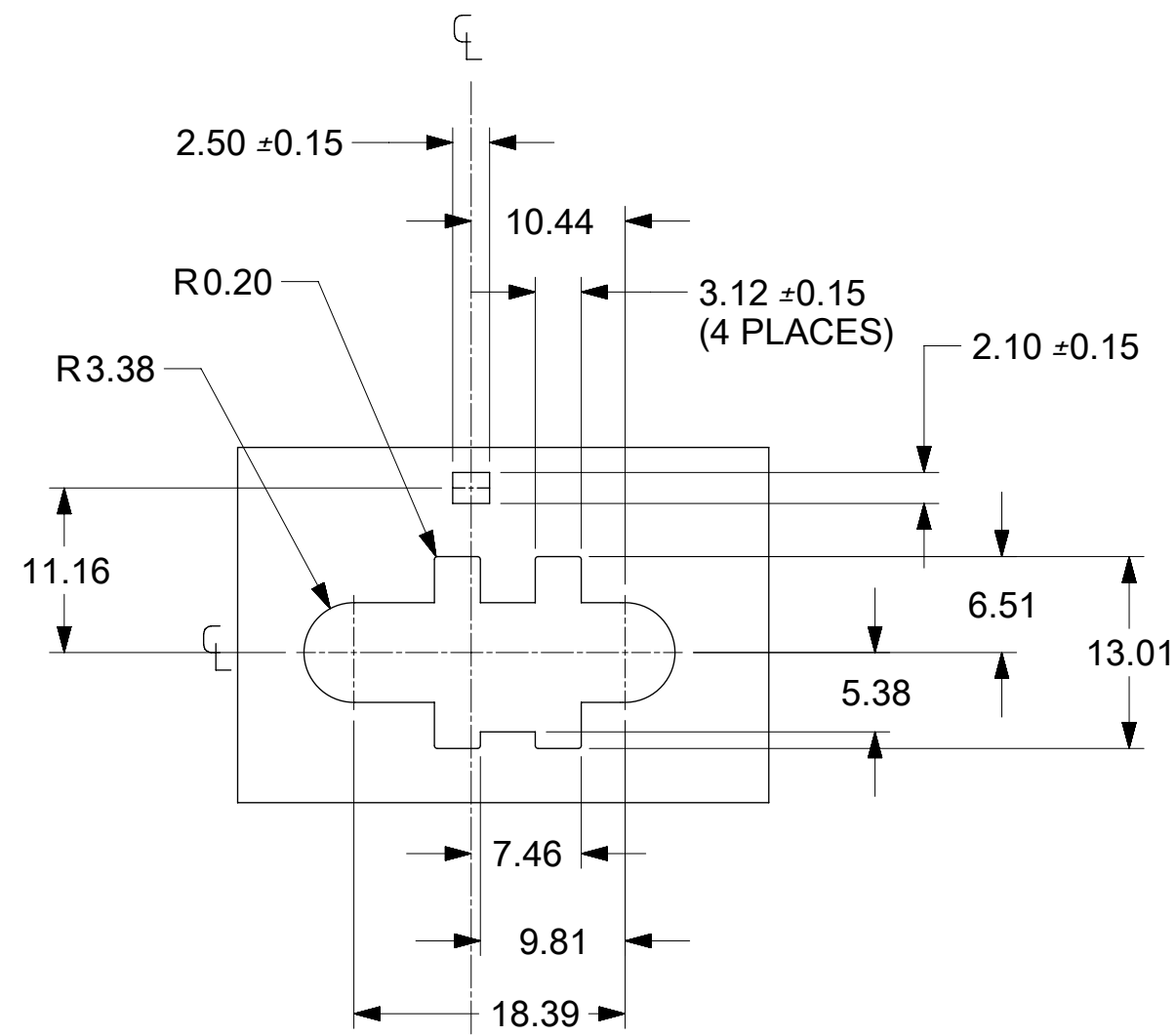
1. MATERIAL: HALOGEN-FREE PBT. COLOR: BLACK.
2. PRODUCT CONFORMS TO PRODUCT SPECIFICATION PS-45579-001.
3. USES MALE CRIMP TERMINALS SERIES 45627.
4. PART MATES WITH MOLEX RECEPTACLE 46528-0007.
5. PACKAGING: 2,500 PCS PER MOLEX SHIPPING CARTON 96707-0007.
6. SEE PAGE 2 OF 2 FOR PANEL CUTOUT DIMENSIONS AND THE ALLOWED PANEL TO PANEL MISALIGNMENT.
7. USE MOLEX EXTRACTION TOOL 63813-1400 TO REMOVE TERMINAL WITHOUT DAMAGING THE PLUG CORE. RELOAD PLUG CORE WITH NEW TERMINAL ONLY. REMOVED TERMINAL AFTER EXTRACTION IS NOT USABLE.



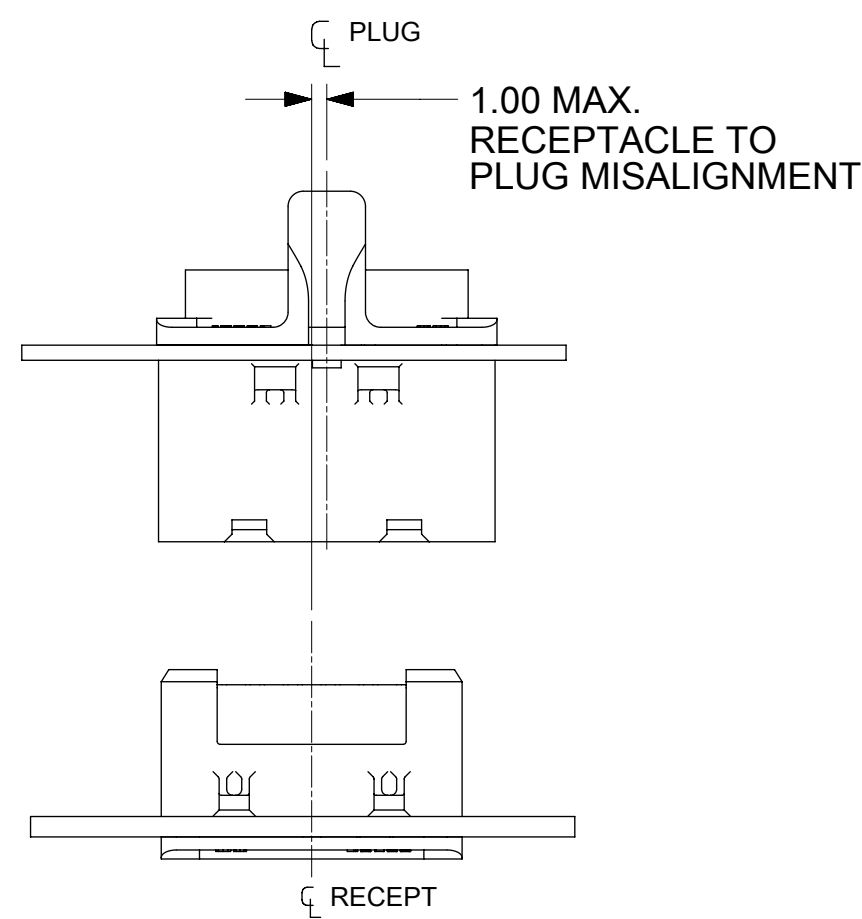
THIS DRAWING CONTAINS INFORMATION THAT IS PROPRIETARY TO MOLEX ELECTRONIC TECHNOLOGIES, LLC AND SHOULD NOT BE USED WITHOUT WRITTEN PERMISSION

DIMENSION UNITS		SCALE		CURRENT REV DESC:				<b>molex</b>							
MM		4:1													
GENERAL TOLERANCES (UNLESS SPECIFIED)						EC NO: 625546				SPOX BMI 1X7 PLUG HOUSING					
		MM	INCH	DRWN: CMN 2017/08/12											
4 PLACES		±	±	CHK'D: ISHWARG 2019/10/18				PRODUCT CUSTOMER DRAWING							
3 PLACES		±	±	APPR: ISHWARG 2019/10/18											
2 PLACES		±	0.13	INITIAL REVISION:				DOCUMENT NUMBER							
1 PLACE		±	0.25	DRWN: DROSCA 2010/03/29								SD-46831-002		PSD 001 B	
0 PLACES		±	±	APPR: JCOMERCI 2010/10/29											
ANGULAR TOL		± 0.5 °		THIRD ANGLE PROJECTION		DRAWING		SERIES		MATERIAL NUMBER		CUSTOMER		SHEET NUMBER	
DRAFT WHERE APPLICABLE MUST REMAIN WITHIN DIMENSIONS				C-SIZE		46831		468310002		GENERAL MARKET		1 OF 2			

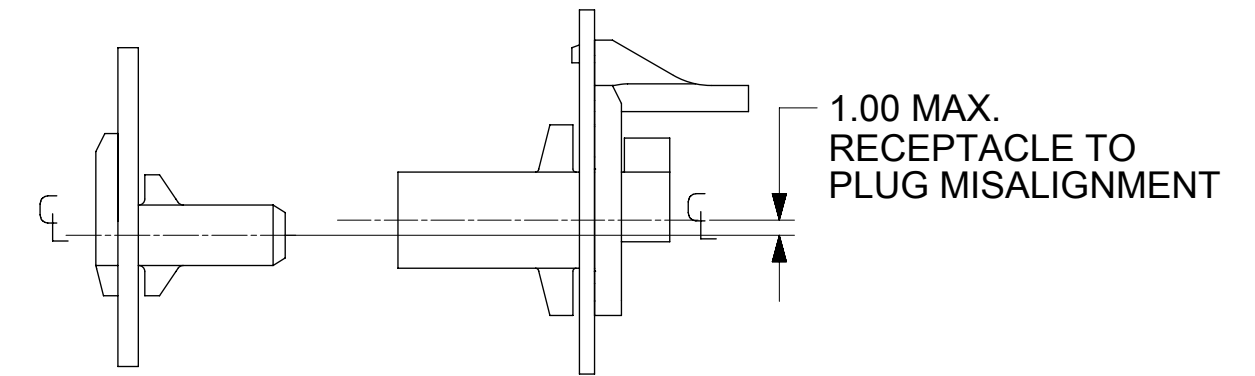
DOCUMENT STATUS	P1	RELEASE DATE	2019/10/18 08:26:00
-----------------	----	--------------	---------------------



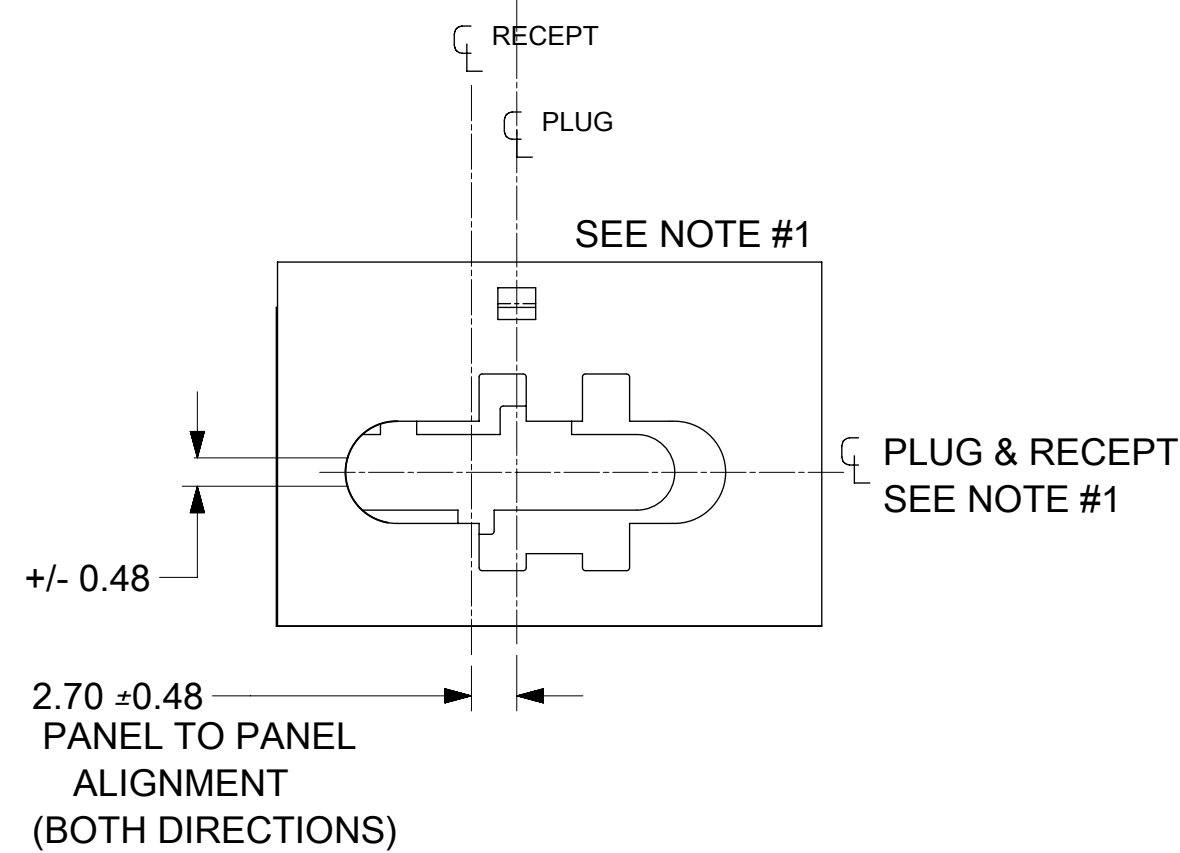
PANEL CUTOUT  
WIRE ENTRY SIDE VIEW  
PANEL THICKNESS 1.00mm +/-0.15



WIRE SIDE ENTRY



WIRE SIDE ENTRY

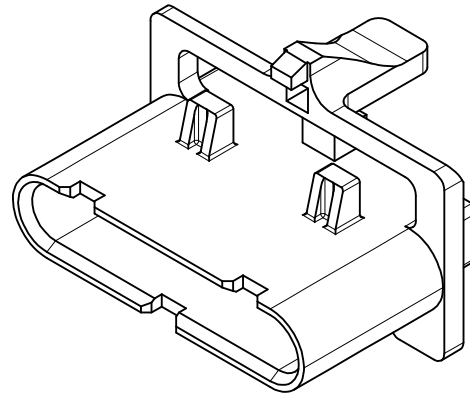
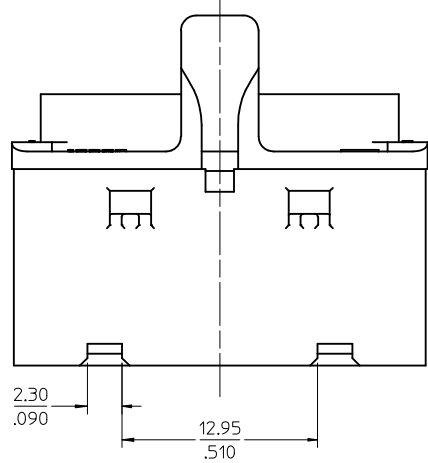


PANEL TO PANEL STACK HEIGHT

NOTES:

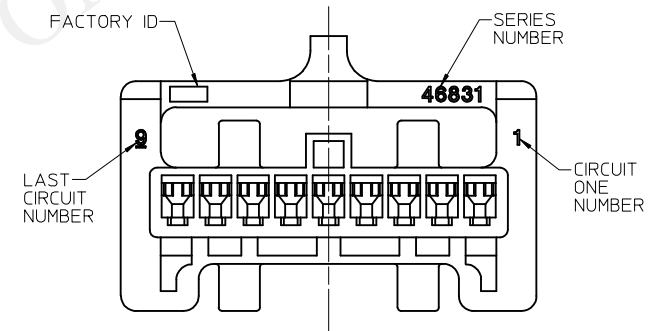
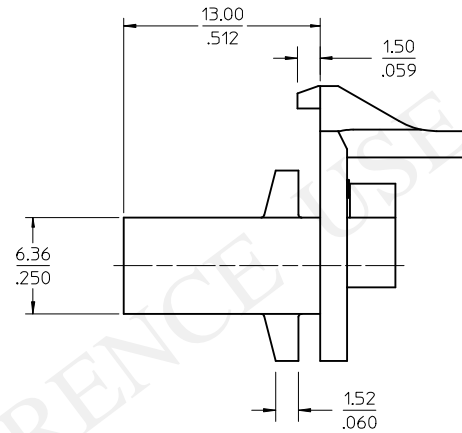
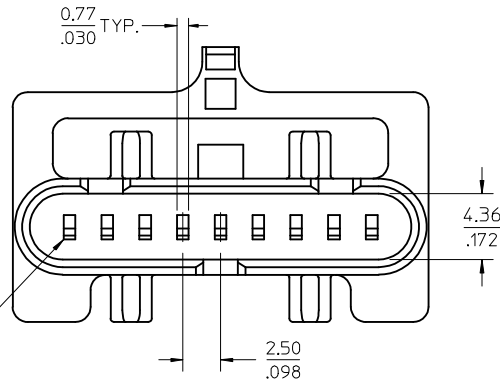
1. TO ALIGN 46831 PANEL CUTOUT WITH 46528 PANEL CUTOUT, ALIGN HORIZONTAL CENTERLINES AND KEEP 2.70MM BETWEEN VERTICAL CENTERLINES OF THE PANEL CUTOUT IN THE DRAWING SD-46528-077.
2. TERMINALS MUST BE ALLOWED TO FLOAT FREELY WITHIN EACH CORE DO NOT TIE WIRES TOGETHER TIGHTLY, ALLOW WIRE TO MOVE.

THIS DRAWING CONTAINS INFORMATION THAT IS PROPRIETARY TO MOLEX ELECTRONIC TECHNOLOGIES, LLC AND SHOULD NOT BE USED WITHOUT WRITTEN PERMISSION									
DIMENSION UNITS		SCALE		CURRENT REV DESC:					
MM		2:1		<b>molex</b> SPOX BMI 1X7 PLUG HOUSING PRODUCT CUSTOMER DRAWING DOCUMENT NUMBER: SD-46831-002   DOC TYPE: PSD   DOC PART: 001   REVISION: B MATERIAL NUMBER: 468310002   CUSTOMER: GENERAL MARKET   SHEET NUMBER: 2 OF 2					
GENERAL TOLERANCES (UNLESS SPECIFIED)									
4 PLACES	±		±						
3 PLACES	±		±						
2 PLACES	±	0.13	±						
1 PLACE	±	0.25	±	EC NO: 625546	2017/08/12				
0 PLACES	±		±	DRWN: CMN	2019/10/18				
ANGULAR TOL ± 0.5°				CHK'D: ISHWARG	2019/10/18				
DRAFT WHERE APPLICABLE MUST REMAIN WITHIN DIMENSIONS				APPR: ISHWARG	2019/10/18				
THIRD ANGLE PROJECTION				INITIAL REVISION:					
DRAWING				DRWN: DROSCA	2010/03/29				
C-SIZE				APPR: JCOMERCI	2010/10/29				
SERIES				46831					

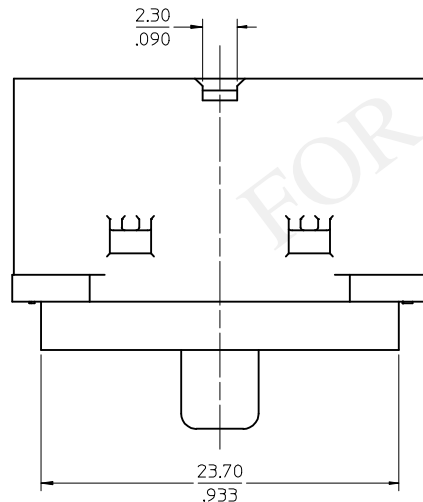
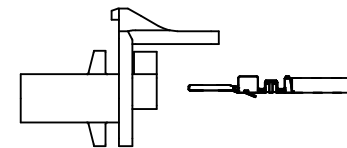


NOTES:

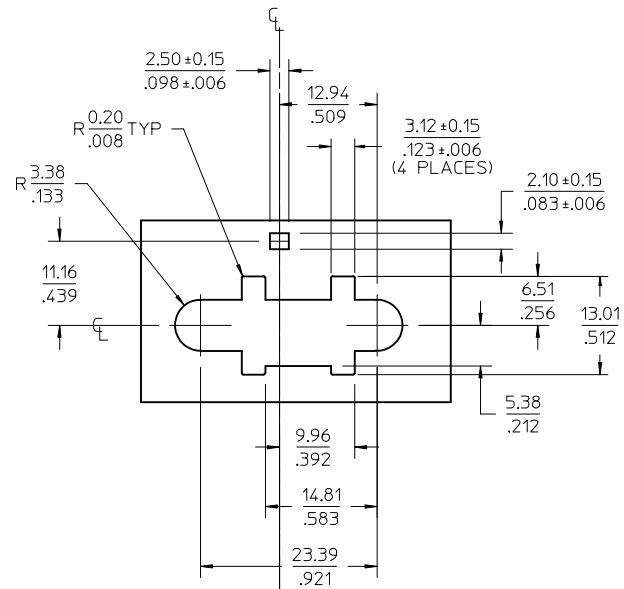
1. MATERIAL: NYLON, UL94V-0, LOW HALOGEN, COLOR: BLACK.
2. FINISH: N/A
3. PRODUCT SPECIFICATION: PS-45579-001.
4. PACKAGING: TBD PCS PER SHIPPING CARTON
5. MATES WITH: 172062-1\*09 RECEPTACLE HOUSING.
6. FOR USE WITH 45627 MALE CRIMP TERMINALS
7. THIS PART CONFORMS TO CLASS B REQUIREMENTS OF COSMETIC SPEC PS-45499-002.
8. SEE PAGE 2 OF 2 FOR PANEL CUTOUT DIMENSIONS AND THE ALLOWED PANEL TO PANEL MISALIGNMENT.
9. USE MOLEX EXTRACTION TOOL 63813-1400 TO REMOVE TERMINAL WITHOUT DAMAGING THE HOUSING. RELOAD HOUSING WITH NEW TERMINAL ONLY. EXTRACTED TERMINALS ARE NOT REUSABLE.



TERMINALS TO BE ORIENTED AND LOADED INTO THE HOUSING AS SHOWN BELOW

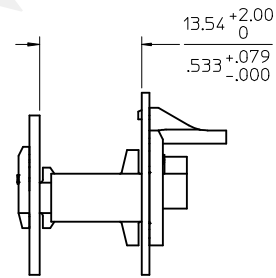
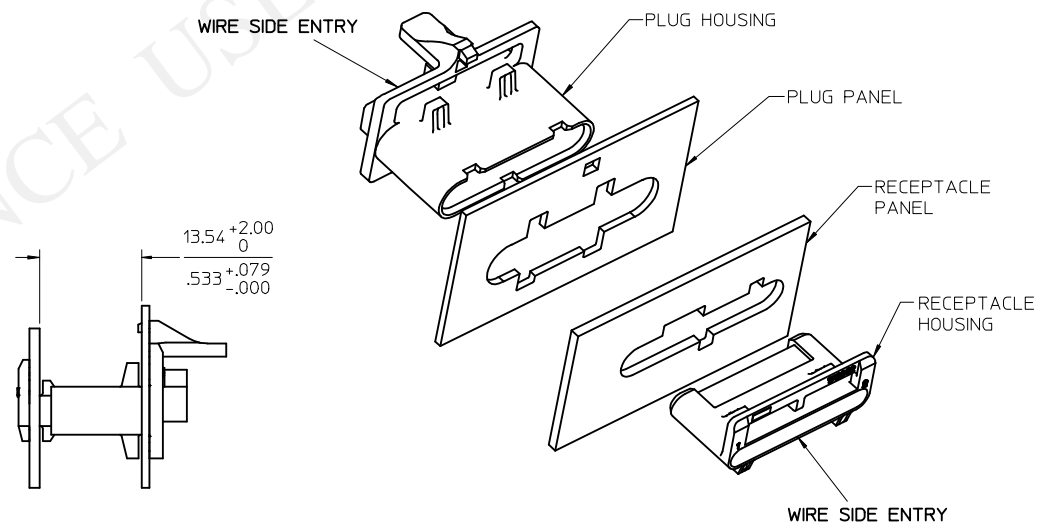
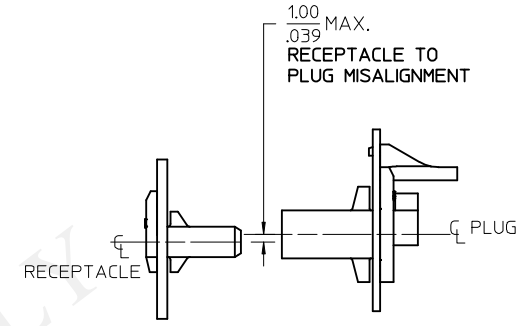
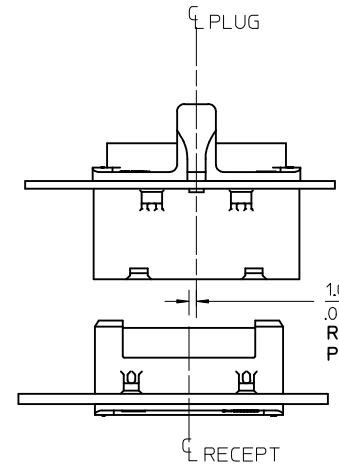
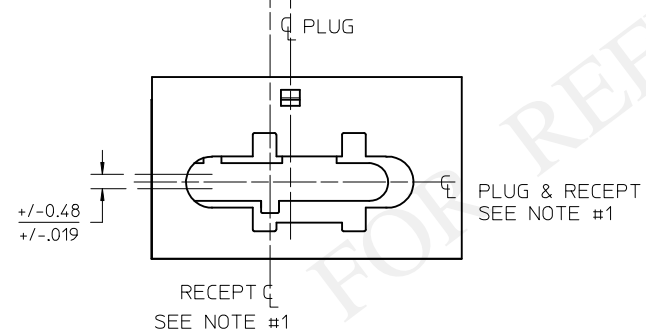


<b>CREATE DRAWING</b> EC NO: UCP2014-0988 DRAWN: NGUYEN 2013/08/30 CHKD: BANDERSON 2013/08/30 APPR: NGUYEN 2013/09/11	QUALITY SYMBOLS ▽=0 ▽=0 ▽=0	GENERAL TOLERANCES (UNLESS SPECIFIED)		DIMENSION STYLE <b>MM/IN</b>	SCALE <b>4:1</b>	DESIGN UNITS <b>METRIC</b>	THIRD ANGLE PROJECTION		
		4 PLACES ± --- ± --- 3 PLACES ± --- ± .010 2 PLACES ± 0.25 ± .014 1 PLACE ± 0.35 ± --- 0 PLACE ± ±	mm INCH	DRAWN BY NGUYEN	DATE 2013/08/30	TITLE <b>SPOX BMI 1X9 PLUG HOUSING</b>			
		DRAFT WHERE APPLICABLE MUST REMAIN WITHIN DIMENSIONS		CHECKED BY BANDERSON	DATE 2013/08/30	<b>molex</b>			
		ANGULAR ± 2 °		APPROVED BY NGUYEN	DATE 2013/09/11	MATERIAL NO. <b>468310003</b>	DOCUMENT NO. <b>SD-46831-003</b>	SHEET NO. <b>1 OF 2</b>	



PANEL CUTOUT  
WIRE ENTRY SIDE VIEW  
PANEL THICKNESS 1.00mm +/-0.15

PANEL TO PANEL 2.70±0.48  
ALIGNMENT .106±.019  
(BOTH DIRECTIONS)



PANEL TO PANEL STACK HEIGHT

- NOTES:
- TO ALIGN 46831 PANEL CUTOUT WITH 172062 PANEL CUTOUT:  
ALIGN HORIZONTAL CENTERLINES AND KEEP 2.70MM BETWEEN VERTICAL CENTERLINES OF THE PANEL CUTOUT IN THE DRAWING SD-172062-100.
  - TERMINALS MUST BE ALLOWED TO FLOAT FREELY WITHIN EACH CORE  
DO NOT TIE WIRES TOGETHER TIGHTLY, ALLOW WIRE TO MOVE.

SEE SHEET 1 EC NO: UCP2014-0988 DRAWN: NGUYEN 2013/08/30 CHKD: BANDERSON 2013/08/30 APPR: NGUYEN 2013/09/11	QUALITY SYMBOLS ▽=0 ▽=0 ▽=0	GENERAL TOLERANCES (UNLESS SPECIFIED)		DIMENSION STYLE MM/IN		SCALE 2:1	DESIGN UNITS METRIC	THIRD ANGLE PROJECTION			
		4 PLACES ± --- ± ---	3 PLACES ± --- ± .010	2 PLACES ± 0.25 ± .014	1 PLACE ± 0.35 ± ---	0 PLACE ± ±	DRAWN BY NGUYEN		DATE 2013/08/30		
		ANGULAR ± 2 °		MATERIAL NO.		DRAWN BY BANDERSON		DATE 2013/08/30		TITLE SPOX BMI 1X9 PLUG HOUSING	
		DRAFT WHERE APPLICABLE MUST REMAIN WITHIN DIMENSIONS		SEE SHEET 1		APPROVED BY NGUYEN		DATE 2013/09/11		DOCUMENT NO. SD-46831-003	
1	REV	SIZE C		THIS DRAWING CONTAINS INFORMATION THAT IS PROPRIETARY TO MOLEX INCORPORATED AND SHOULD NOT BE USED WITHOUT WRITTEN PERMISSION						SHEET NO. 2 OF 2	