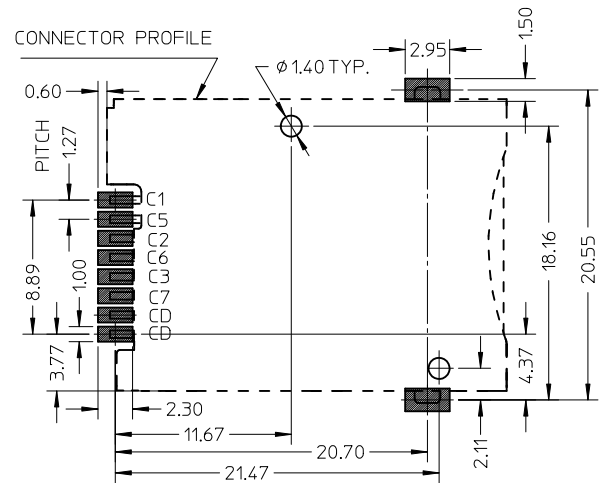
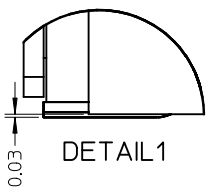
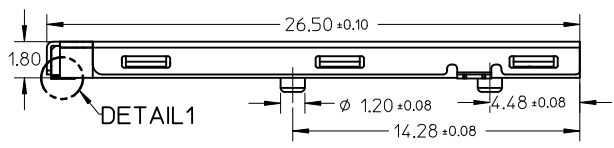


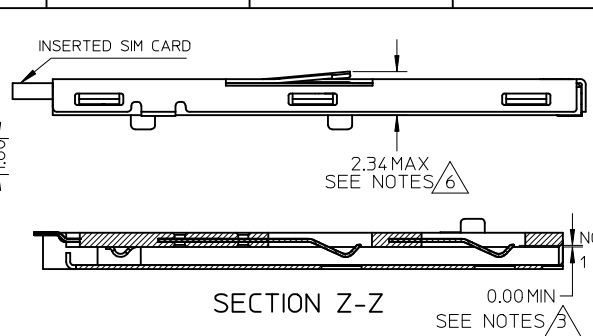
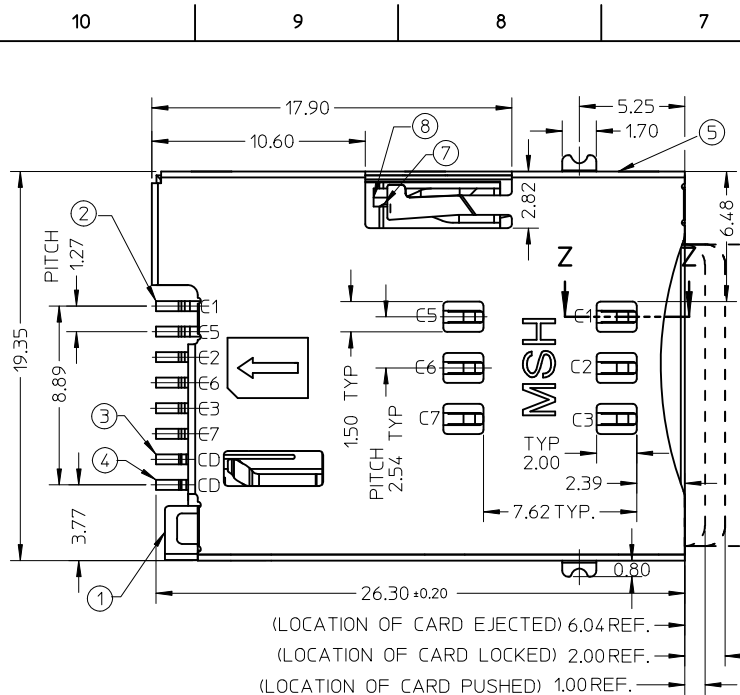
- NOTES:
- 1 FINISH:
    - 1-1 TERMINAL :
      - 50~200μ NICKEL UNDER PLATED
      - 15μ GOLD PLATING ON CONTACT AREA
      - 3μ MIN GOLD FLASH ON SOLDERING AREA
    - 1-2 SHELL :
      - 50~200μ NICKEL UNDER PLATED
      - 3μ MIN GOLD FLASH ON SOLDERING AREA
    - 1-3 DETECT PIN :
      - 50~200μ NICKEL UNDER PLATED
      - 3μ MIN GOLD PLATING ON CONTACT AREA
      - 3μ MIN GOLD PLATING ON SOLDERING AREA
  - 2 SOLDER TAIL COPLANARITY: 0.08MM MAX.
  - 3 TERMINAL TIP MUST SINK INTO HOUSING
  - 4 PRODUCT COMPLIANT TO ROHS DIRECTIVE 2002/95/EC AND ELV DIRECTIVE 2000/53/EC
  - 5 DETECT SWITCH: INSERT CARD=ON (NORMAL=OPEN)
  - 6 SPRING RISE UP DURING PUSH-PUSH PERIOD
  - 7 PACKAGE DRAWING: PK-47553-001
  - 8 PRODUCT SPECIFICATION: PS-47553-201



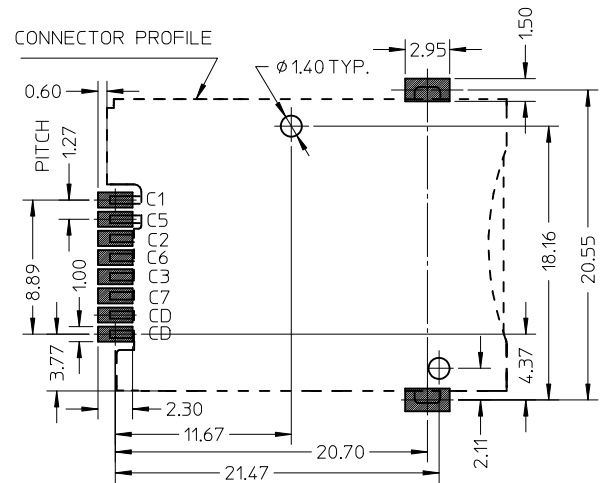
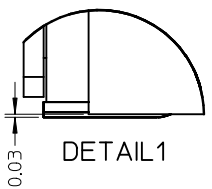
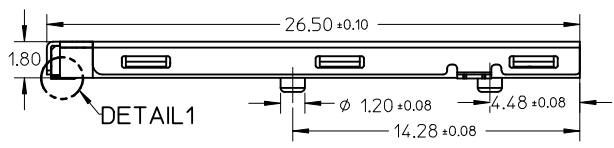
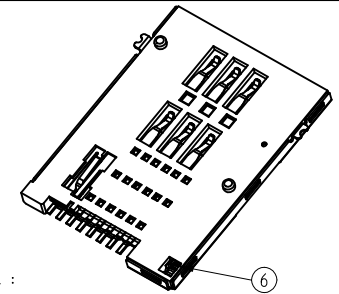
RECOMMENDED PCB LAYOUT TOLERANCE +/-0.05MM

CARD INSERTED		WITHOUT CARD	
NO.	DESCRIPTION	Q'TY	MATERIAL
1	HOUSING	1	HIGH TEMPERATURE THERMOPLASTIC
2	TERMINAL	6	COPPER ALLOY
3	DETECT PIN LOWER	1	COPPER ALLOY
4	DETECT PIN UPPER	1	COPPER ALLOY
5	SHELL	1	STAINLESS STEEL
6	COIL SPRING	1	PIANO WIRE
7	HEART CAM	1	HIGH TEMPERATURE THERMOPLASTIC
8	CAM PIN	1	STAINLESS STEEL

NEW DIM TOL CTRL EC NO: DRW/KHL/IM CHKD: JTAN02 APPR: A1	2011/05/27 DESCRIPTION REV	QUALITY SYMBOLS	GENERAL TOLERANCES (UNLESS SPECIFIED)	DIMENSION STYLE	SCALE	DESIGN UNITS	THIRD ANGLE PROJECTION	
		▽=0	mm INCH	MM ONLY	NTS	METRIC		
		∇=0	4 PLACES ± --- ± ---	DRAWN BY	DATE	TITLE		
			3 PLACES ± --- ± ---	LHSHEN	2007/07/09	PUSH PUSH 6 PINS SIM WITH DETECT PIN&POST SALES DRAWING		
		2 PLACES ± 0.15 ± ---	CHECKED BY	DATE	MOLEX INCORPORATED			
		1 PLACE ± --- ± ---	XUXIANG	2007/08/30	DOCUMENT NO. SD-47553-201			
		ANGULAR ± --- °	APPROVED BY	DATE	SHEET NO. 1 OF 1			
			HWWANG	2007/08/30	THIS DRAWING CONTAINS INFORMATION THAT IS PROPRIETARY TO MOLEX INCORPORATED AND SHOULD NOT BE USED WITHOUT WRITTEN PERMISSION			
			MATERIAL NO.	475532001				
				SIZE A3				



- NOTES:
- 1 FINISH:
    - 1-1 TERMINAL :
      - 50~200μ NICKEL UNDER PLATED
      - 15μ GOLD PLATING ON CONTACT AREA
      - 3μ MIN GOLD FLASH ON SOLDERING AREA
    - 1-2 SHELL :
      - 50~200μ NICKEL UNDER PLATED
      - 3μ MIN GOLD FLASH ON SOLDERING AREA
    - 1-3 DETECT PIN :
      - 50~200μ NICKEL UNDER PLATED
      - 3μ MIN GOLD PLATING ON CONTACT AREA
      - 3μ MIN GOLD PLATING ON SOLDERING AREA
  - 2 SOLDER TAIL COPLANARITY: 0.08MM MAX.
  - 3 TERMINAL TIP MUST SINK INTO HOUSING
  - 4 PRODUCT COMPLIANT TO ROHS DIRECTIVE 2002/95/EC AND ELV DIRECTIVE 2000/53/EC
  - 5 DETECT SWITCH: INSERT CARD=ON (NORMAL=OPEN)
  - 6 SPRING RISE UP DURING PUSH-PUSH PERIOD
  - 7 PACKAGE DRAWING: PK-47553-001
  - 8 PRODUCT SPECIFICATION: PS-47553-201



RECOMMENDED PCB LAYOUT TOLERANCE +/-0.05MM

CARD INSERTED		WITHOUT CARD	
NO.	DESCRIPTION	Q'TY	MATERIAL
1	HOUSING	1	HIGH TEMPERATURE THERMOPLASTIC
2	TERMINAL	6	COPPER ALLOY
3	DETECT PIN LOWER	1	COPPER ALLOY
4	DETECT PIN UPPER	1	COPPER ALLOY
5	SHELL	1	STAINLESS STEEL
6	COIL SPRING	1	PIANO WIRE
7	HEART CAM	1	HIGH TEMPERATURE THERMOPLASTIC
8	CAM PIN	1	STAINLESS STEEL

<b>NEW DIM TOL CTRL</b> EC NO: DRW/KHL/IM CHKD:JTAN02 APPR: 2011/05/27	QUALITY SYMBOLS ▽=0 ◁=0	GENERAL TOLERANCES (UNLESS SPECIFIED)		DIMENSION STYLE <b>MM ONLY</b>		SCALE <b>NTS</b>	DESIGN UNITS <b>METRIC</b>	THIRD ANGLE PROJECTION			
		4 PLACES ± --- ± --- 3 PLACES ± --- ± --- 2 PLACES ± 0.15 ± --- 1 PLACE ± --- ± ---	mm INCH	DRAWN BY LHSHEH	DATE 2007/07/09	TITLE <b>PUSH PUSH 6 PINS SIM WITH DETECT PIN&amp;POST SALES DRAWING</b>					
		ANGULAR ± --- °		CHECKED BY XUXIANG	DATE 2007/08/30	<b>MOLEX INCORPORATED</b>					
		DRAFT WHERE APPLICABLE MUST REMAIN WITHIN DIMENSIONS		APPROVED BY HWWANG	DATE 2007/08/30	MATERIAL NO. <b>475532001</b>	DOCUMENT NO. <b>SD-47553-201</b>	SHEET NO. <b>1 OF 1</b>			