

Distributed by:

JAMECO[®]
ELECTRONICS

www.Jameco.com ♦ 1-800-831-4242

The content and copyrights of the attached
material are the property of its owner.

Jameco Part Number 1301139



PRODUCT SPECIFICATION



LANGUAGE

JAPANESE
ENGLISH

【4. 性能 PERFORMANCE】

4-1. 電気的性能 Electrical Performance

項目 Item	条件 Test Condition	規格 Requirement
4-1-1 接触抵抗 Contact Resistance	適合FPCを嵌合させ、開放電圧 20mV以下、短絡電流10mAにて測定する。 (JIS C5402 5.4) Mate applicable FPC and measured by dry circuit, 20mV MAX., 10mA. (JIS C5402 5.4)	20 milliohms MAX.
4-1-2 絶縁抵抗 Insulation Resistance	適合FPCを嵌合させ、隣接するターミナル間及びターミナル、アース間に、DC 500V を印加し測定する。 (JIS C5402 5.2/MIL-STD-202 試験法302B) Mate applicable FPC and apply 500V DC between adjacent terminal or ground. (JIS C5402 5.2/MIL-STD-202 Method 302B)	100 Megohms MIN.
4-1-3 耐電圧 Dielectric Strength	適合FPCを嵌合させ、隣接するターミナル間及びターミナル、アース間に、AC500V(実効値) を 1分間 印加する。 (JIS C5402 5.1/MIL-STD-202 試験法 301に準拠) Mate applicable FPC and apply 500V AC (rms) for 1 minute between adjacent terminal or ground. (JIS C5402 5.1/MIL-STD-202 Method 301)	異常なきこと No Breakdown

4-2. 機械的性能 Mechanical Performance

項目 Item	条件 Test Condition	規格 Requirement
4-2-1 アクチュエータ 挿抜力 Actuator Insertion / Withdrawal Force	適合FPCを嵌合させ、アクチュエータを毎分25±3mmの速さで挿入、抜去を行う。 Mate applicable FPC and insert and withdraw actuator at the speed rate of 25±3mm/minute.	第7項参照 Refer to paragraph 7
4-2-2 FPC保持力 FPC Retention Force	アクチュエータ挿入状態にて、毎分25±3mmの速さでFPCを引き抜く。 Insert the actuator, pull the FPC at the speed rate of 25±3mm/minute.	第8項参照 Refer to paragraph 8
4-2-3 端子保持力 Terminal / Housing Retention Force	各端子毎の引き抜きは、毎分25±3mmの速さで行う。 Apply axial pull out force at the speed rate of 25±3 mm/minute on the terminal assembled in the housing.	5.9 N {0.6 kgf} MIN.

REVISE ON PC ONLY

A

SEE SHEET 1 OF 11

TITLE:

1.0mm PITCH FPC CONN.
ZIF SMT R/A UPPER CONTACT
-LEAD FREE- 製品仕様書

REV.

DESCRIPTION

THIS DOCUMENT CONTAINS INFORMATION THAT IS PROPRIETARY TO MOLEX INC. AND SHOULD NOT BE USED WITHOUT WRITTEN PERMISSION

DOCUMENT NUMBER

PS-52207-047

FILE NAME

PS52207047.doc

SHEET

2 OF 11

EN-37-1(019)



PRODUCT SPECIFICATION



LANGUAGE

JAPANESE
ENGLISH

4-3. その他 Environmental Performance and Others

項目 Item	条件 Test Condition	規格 Requirement	
4-3-1 アクチュエータ 繰返し動作 Repeated Actuator Insertion / Withdrawal	無通電状態にて、1分間1に10回以下の速さで挿入、抜去を 30回繰り返す。 Insert and withdraw actuator up to 30 cycles at the speed rate of less than 10 cycles/minute.	接触抵抗 Contact Resistance	40 milliohms MAX.
4-3-2 温度上昇 Temperature Rise	適合FPCを嵌合させ、最大許容電流を通電し、コネクタの温度上昇分を測定する。 (UL 498) Carrying rated current load. (UL 498)	温度上昇 Temperature Rise	30 °C MAX.
4-3-3 耐振動性 Vibration	DC 1mA通電状態にて、嵌合軸を含む互いに垂直な 3方向 に掃引割合 10~55~10 Hz/分 全振幅1.5mm の振動を 各2時間 加える。 (MIL-STD-202 試験法 201A) Amplitude: 1.5mm P-P Sweep time: 10~55~10 Hz in 1 minute Duration: 2 hours in each X.Y.Z. axes (MIL-STD-202 Method 201A)	外観 Appearance	異常なきこと No Damage
		接触抵抗 Contact Resistance	40 milliohms MAX.
		瞬断 Discontinuity	1.0 microsec. MAX.
4-3-4 耐衝撃性 Shock	DC 1mA 通電状態にて、嵌合軸を含む互いに垂直な 6方向 に 490m/s ² {50G} の衝撃を 各3回 加える。 (JIS C0041/MIL-STD-202 試験法 213B) 490m/s ² {50G}, 3 strokes in each X.Y.Z. axes. (JIS C0041/MIL-STD-202 Method 213B)	外観 Appearance	異常なきこと No Damage
		瞬断 Discontinuity	1 microsecond MAX.
4-3-5 耐熱性 Heat Resistance	適合FPCを嵌合させ、85±2°C の雰囲気中に2時間 放置後取り出し、1~2時間 室温に放置する。 (JIS C0021/MIL-STD-202 試験法 108A) 85±2°C, 2 hours (JIS C0021/MIL-STD-202 Method 108A)	外観 Appearance	異常なきこと No Damage
		接触抵抗 Contact Resistance	40 milliohms MAX.
4-3-6 耐寒性 Cold Resistance	適合 FPC を嵌合させ、-40±2°C の雰囲気中に2時間 放置後取り出し、1~2時間 室温に放置する。 (JIS C0020) -40±2°C, 2 hours (JIS C0020)	外観 Appearance	異常なきこと No Damage
		接触抵抗 Contact Resistance	40 milliohms MAX.

REVISE ON PC ONLY

A

SEE SHEET 1 OF 11

TITLE:

1.0mm PITCH FPC CONN.
ZIF SMT R/A UPPER CONTACT
-LEAD FREE- 製品仕様書

THIS DOCUMENT CONTAINS INFORMATION THAT IS PROPRIETARY TO MOLEX INC. AND SHOULD NOT BE USED WITHOUT WRITTEN PERMISSION

REV.

DESCRIPTION

DOCUMENT NUMBER

PS-52207-047

FILE NAME

PS52207047.doc

SHEET

3 OF 11



PRODUCT SPECIFICATION



LANGUAGE

JAPANESE
ENGLISH

項目 Item		条件 Test Condition	規格 Requirement	
4-3-7	耐湿性 Humidity	適合FPCを嵌合させ、40±2°C、相対湿度90~95%の雰囲気中に96時間放置後取り出し、30分以内に測定。水滴は拭き取る。 (JIS C0022/MIL-STD-202 試験法 103B) Temperature: 40±2°C Relative Humidity: 90~95% Duration: 96 hours (JIS C0022/MIL-STD-202 Method 103B)	外観 Appearance	異常なきこと No Damage
			接触抵抗 Contact Resistance	40 milliohms MAX.
			耐電圧 Dielectric Strength	4-1-3項満足のこと Must meet 4-1-3
			絶縁抵抗 Insulation Resistance	50 Megohms MIN.
4-3-8	温度サイクル Temperature Cycling	適合FPCを嵌合させ、-55±3°Cに30分、+85±2°Cに30分これを1サイクルとし、5サイクル繰り返す。但し、温度移行時間は5分以内とする。試験後1~2時間室温に放置する。(JIS C0025) 5 cycles of: a) -55±3°C 30 minutes b) +85±2°C 30 minutes Transit time shall be within 5 minutes. (JIS C0025)	外観 Appearance	異常なきこと No Damage
			接触抵抗 Contact Resistance	40 milliohms MAX.
4-3-9	塩水噴霧 Salt Spray	適合FPCを嵌合させ、35°C±2°Cにて5±1%重量比の塩水を48±4時間噴霧し、試験後常温で水洗いした後、室温で乾燥させる。 (JIS C5028/MIL-STD-202 試験法101D) 48±4 hours exposure to a salt spray from the 5±1% solution at 35±2°C. (JIS C5028/MIL-STD-202 Method 101D)	外観 Appearance	割れ、著しい腐食等 異常なきこと No Damage
			接触抵抗 Contact Resistance	40 milliohms MAX.
4-3-10	亜硫酸ガス SO ₂ Gas	適合FPCを嵌合させ、40±2°Cにて50±5ppmの亜硫酸ガス中に24時間放置する。 24 hours exposure to 50±5ppm SO ₂ gas at 40±2°C.	接触抵抗 Contact Resistance	40 milliohms MAX.
4-3-11	耐アンモニア性 NH ₃ Gas	適合FPCを嵌合させ、濃度28%のアンモニア水を入れた容器中に40分間放置する。 (1Lに対して25mLの割合) 40 minutes exposure to NH ₃ gas evaporating from 28% Ammonia solution.	外観 Appearance	異常なきこと No Damage
			接触抵抗 Contact Resistance	40 milliohms MAX.

REVISE ON PC ONLY		TITLE: 1.0mm PITCH FPC CONN. ZIF SMT R/A UPPER CONTACT -LEAD FREE- 製品仕様書
A	SEE SHEET 1 OF 11	
REV.	DESCRIPTION	THIS DOCUMENT CONTAINS INFORMATION THAT IS PROPRIETARY TO MOLEX INC. AND SHOULD NOT BE USED WITHOUT WRITTEN PERMISSION

DOCUMENT NUMBER PS-52207-047	FILE NAME PS52207047.doc	SHEET 4 OF 11
--	-----------------------------	------------------



PRODUCT SPECIFICATION



LANGUAGE

JAPANESE
ENGLISH

項 目 Item		条 件 Test Condition	規 格 Requirement	
4-3-12	半田付け性 Solderability	端子先端より1.5mm、金具側面より ^① の位置まで、 245±5°C の半田に 3±0.5秒 浸す。 Soldering Time: 3±0.5秒 Solder Temperature: 245±5°C 1.5mm from terminal tip, 1mm from the side of the fitting nail.	濡れ性 Solder Wetting	浸漬面積の 75%以上 75% of immersed area must show no voids, Pinholes
4-3-13	半田耐熱性 Resistance to Soldering Heat	(リフロー時) 第6項参照 リフロー回数: 2回 (When reflowing) See paragraph 6 Reflowing: 2 times.	外観 Appearance	端子ガタ、割れ等 異常なきこと No Damage
		(手半田時) 端子先端より1.5mm、金具側面下部 ^② より 1mm の位置まで、 370~400°C の半田ゴテにて 最大5秒 加熱する。 Soldering Time: 5 sec MAX. Solder Temperature: 370~400°C 1.5 mm from terminal tip, 1 mm from the bottom side of the fitting nail.		

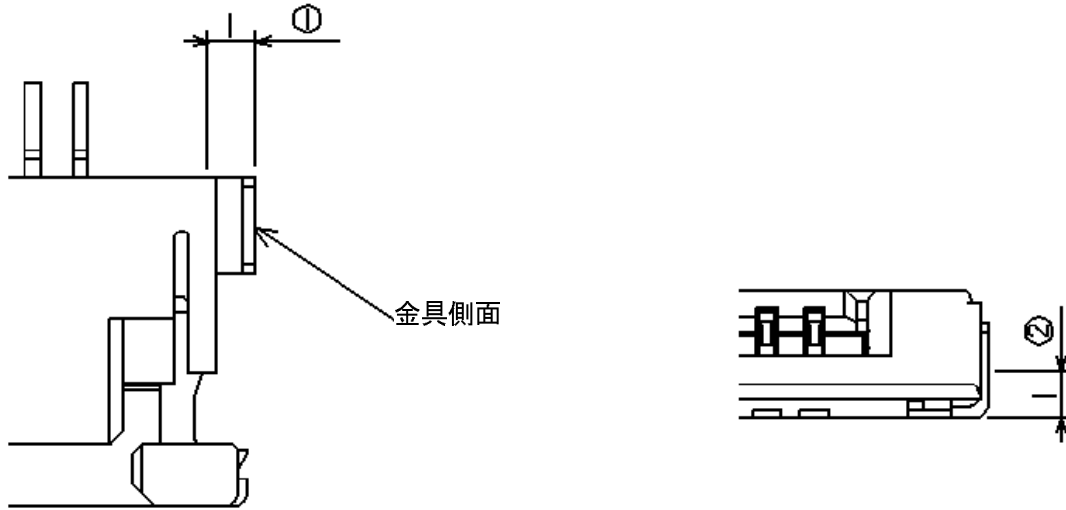
(): 参考規格 Reference Standard
{ }: 参考単位 Reference Unit

REVISE ON PC ONLY		TITLE:	
A	SEE SHEET 1 OF 11	1.0mm PITCH FPC CONN. ZIF SMT R/A UPPER CONTACT -LEAD FREE- 製品仕様書	
	REV.	DESCRIPTION	THIS DOCUMENT CONTAINS INFORMATION THAT IS PROPRIETARY TO MOLEX INC. AND SHOULD NOT BE USED WITHOUT WRITTEN PERMISSION
DOCUMENT NUMBER PS-52207-047		FILE NAME PS52207047.doc	SHEET 5 OF 11



【5. 外観形状、寸法及び材質 PRODUCT SHAPE, DIMENSIONS AND MATERIALS】

図面参照 Refer to the drawing.



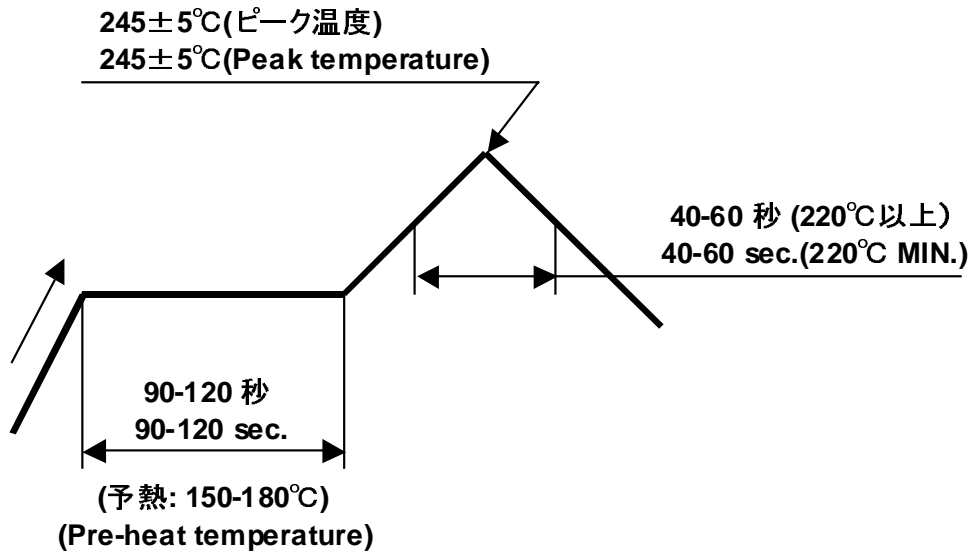
半田付け性、半田耐熱性

金具位置

REVISE ON PC ONLY		TITLE:	
A	SEE SHEET 1 OF 11	1.0mm PITCH FPC CONN. ZIF SMT R/A UPPER CONTACT -LEAD FREE- 製品仕様書	
REV.	DESCRIPTION	THIS DOCUMENT CONTAINS INFORMATION THAT IS PROPRIETARY TO MOLEX INC. AND SHOULD NOT BE USED WITHOUT WRITTEN PERMISSION	
DOCUMENT NUMBER PS-52207-047		FILE NAME PS52207047.doc	SHEET 6 OF 11
EN-37-1(019)			



【6. 赤外線リフロー条件 INFRARED REFLOW CONDITION】



温度条件グラフ
(温度は基板パターン面)

Temperature Condition Graph
(Temperature On The Surface of P.C. Board Pattern)

注記：本リフロー条件に関しては、リフロー装置及び基板などにより条件が異なりますので、事前にリフロー評価をお願い致します。

NOTE : Please check the reflow soldering condition by your own devices beforehand. Because the condition changes by the soldering devices, p.c board, and so on.

REVISE ON PC ONLY		TITLE:	
A	SEE SHEET 1 OF 11	1.0mm PITCH FPC CONN. ZIF SMT R/A UPPER CONTACT -LEAD FREE- 製品仕様書	
REV.	DESCRIPTION	THIS DOCUMENT CONTAINS INFORMATION THAT IS PROPRIETARY TO MOLEX INC. AND SHOULD NOT BE USED WITHOUT WRITTEN PERMISSION	
DOCUMENT NUMBER PS-52207-047		FILE NAME PS52207047.doc	SHEET 7 OF 11



PRODUCT SPECIFICATION



LANGUAGE

JAPANESE
ENGLISH

【7. アクチュエータ挿抜力 Actuator Insertion / Withdrawal Force】

極数 No. of CKT	単位 Unit	挿入力(最大値) Insertion Force (MAX.)			抜去力(最大値) Withdrawal Force (MAX.)		
		初回 1st	6回目 6th	30回目 30th	初回 1st	6回目 6th	30回目 30th
3	N {kgf}	27.4 {2.8}	25.4 {2.6}	25.4 {2.6}	36.2 {3.7}	32.3 {3.3}	32.3 {3.3}
4	N {kgf}	28.4 {2.9}	26.4 {2.7}	26.4 {2.7}	37.2 {3.8}	33.3 {3.4}	33.3 {3.4}
5	N {kgf}	29.4 {3.0}	27.4 {2.8}	27.4 {2.8}	38.2 {3.9}	34.3 {3.5}	34.3 {3.5}
6	N {kgf}	30.3 {3.1}	28.4 {2.9}	28.4 {2.9}	39.2 {4.0}	35.2 {3.6}	35.2 {3.6}
7	N {kgf}	31.3 {3.2}	29.4 {3.0}	29.4 {3.0}	40.1 {4.1}	36.2 {3.7}	36.2 {3.7}
8	N {kgf}	32.3 {3.3}	30.3 {3.1}	30.3 {3.1}	41.1 {4.2}	37.2 {3.8}	37.2 {3.8}
9	N {kgf}	33.3 {3.4}	31.3 {3.2}	31.3 {3.2}	42.1 {4.3}	38.2 {3.9}	38.2 {3.9}
10	N {kgf}	34.3 {3.5}	32.3 {3.3}	32.3 {3.3}	43.1 {4.4}	39.2 {4.0}	39.2 {4.0}
11	N {kgf}	35.2 {3.6}	33.3 {3.4}	33.3 {3.4}	44.1 {4.5}	40.1 {4.1}	40.1 {4.1}
12	N {kgf}	36.2 {3.7}	34.3 {3.5}	34.3 {3.5}	45.0 {4.6}	41.1 {4.2}	41.1 {4.2}
13	N {kgf}	37.2 {3.8}	35.2 {3.6}	35.2 {3.6}	46.0 {4.7}	42.1 {4.3}	42.1 {4.3}
14	N {kgf}	38.2 {3.9}	36.2 {3.7}	36.2 {3.7}	47.0 {4.8}	43.1 {4.4}	43.1 {4.4}
15	N {kgf}	39.2 {4.0}	37.2 {3.8}	37.2 {3.8}	48.0 {4.9}	44.1 {4.5}	44.1 {4.5}
16	N {kgf}	40.1 {4.1}	38.2 {3.9}	38.2 {3.9}	49.0 {5.0}	45.0 {4.6}	45.0 {4.6}
17	N {kgf}	41.1 {4.2}	39.2 {4.0}	39.2 {4.0}	49.9 {5.1}	46.0 {4.7}	46.0 {4.7}
18	N {kgf}	42.1 {4.3}	40.1 {4.1}	40.1 {4.1}	50.9 {5.2}	47.0 {4.8}	47.0 {4.8}

REVISE ON PC ONLY

A

SEE SHEET 1 OF 11

TITLE:

1.0mm PITCH FPC CONN.
ZIF SMT R/A UPPER CONTACT
-LEAD FREE-

製品仕様書

THIS DOCUMENT CONTAINS INFORMATION THAT IS PROPRIETARY TO MOLEX INC. AND SHOULD NOT BE USED WITHOUT WRITTEN PERMISSION

REV.

DESCRIPTION

DOCUMENT NUMBER

PS-52207-047

FILE NAME

PS52207047.doc

SHEET

8 OF 11

EN-37-1(019)



PRODUCT SPECIFICATION



LANGUAGE

JAPANESE
ENGLISH

極数 No. of CKT	単位 Unit	挿入力(最大値) Insertion Force (MAX.)			抜去力(最大値) Withdrawal Force (MAX.)		
		初回 1st	6回目 6th	30回目 30th	初回 1st	6回目 6th	30回目 30th
19	N {kgf}	43.1 {4.4}	41.1 {4.2}	41.1 {4.2}	51.9 {5.3}	48.0 {4.9}	48.0 {4.9}
20	N {kgf}	44.1 {4.5}	42.1 {4.3}	42.1 {4.3}	52.9 {5.4}	49.0 {5.0}	49.0 {5.0}
21	N {kgf}	45.0 {4.6}	43.1 {4.4}	43.1 {4.4}	53.9 {5.5}	49.9 {5.1}	49.9 {5.1}
22	N {kgf}	46.0 {4.7}	44.1 {4.5}	44.1 {4.5}	54.8 {5.6}	50.9 {5.2}	50.9 {5.2}
23	N {kgf}	47.0 {4.8}	45.0 {4.6}	45.0 {4.6}	55.8 {5.7}	51.9 {5.3}	51.9 {5.3}
24	N {kgf}	48.0 {4.9}	46.0 {4.7}	46.0 {4.7}	56.8 {5.8}	52.9 {5.4}	52.9 {5.4}
25	N {kgf}	49.0 {5.0}	47.0 {4.8}	47.0 {4.8}	57.8 {5.9}	53.9 {5.5}	53.9 {5.5}
26	N {kgf}	49.9 {5.1}	48.0 {4.9}	48.0 {4.9}	58.8 {6.0}	54.8 {5.6}	54.8 {5.6}
27	N {kgf}	50.9 {5.2}	49.0 {5.0}	49.0 {5.0}	59.7 {6.1}	55.8 {5.7}	55.8 {5.7}
28	N {kgf}	51.9 {5.3}	49.9 {5.1}	49.9 {5.1}	60.7 {6.2}	56.8 {5.8}	56.8 {5.8}
29	N {kgf}	52.9 {5.4}	50.9 {5.2}	50.9 {5.2}	61.7 {6.3}	57.8 {5.9}	57.8 {5.9}
30	N {kgf}	53.9 {5.5}	51.9 {5.3}	51.9 {5.3}	62.7 {6.4}	58.8 {6.0}	58.8 {6.0}
34	N {kgf}	57.8 {5.9}	55.8 {5.7}	55.8 {5.7}	66.6 {6.8}	62.7 {6.4}	62.7 {6.4}

REVISE ON PC ONLY

A

SEE SHEET 1 OF 11

TITLE:

1.0mm PITCH FPC CONN.
ZIF SMT R/A UPPER CONTACT
-LEAD FREE- 製品仕様書

THIS DOCUMENT CONTAINS INFORMATION THAT IS PROPRIETARY TO MOLEX INC. AND SHOULD NOT BE USED WITHOUT WRITTEN PERMISSION

REV.

DESCRIPTION

DOCUMENT NUMBER

PS-52207-047

FILE NAME

PS52207047.doc

SHEET

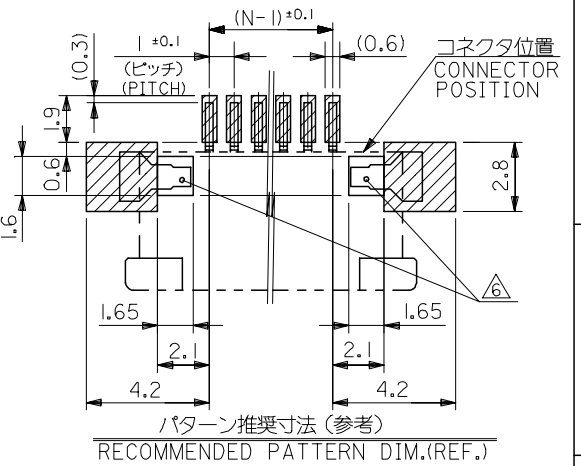
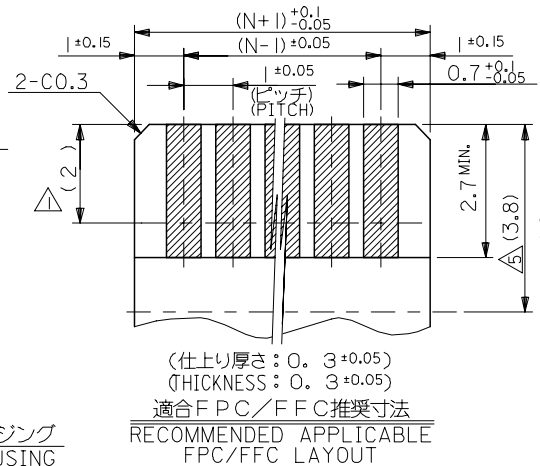
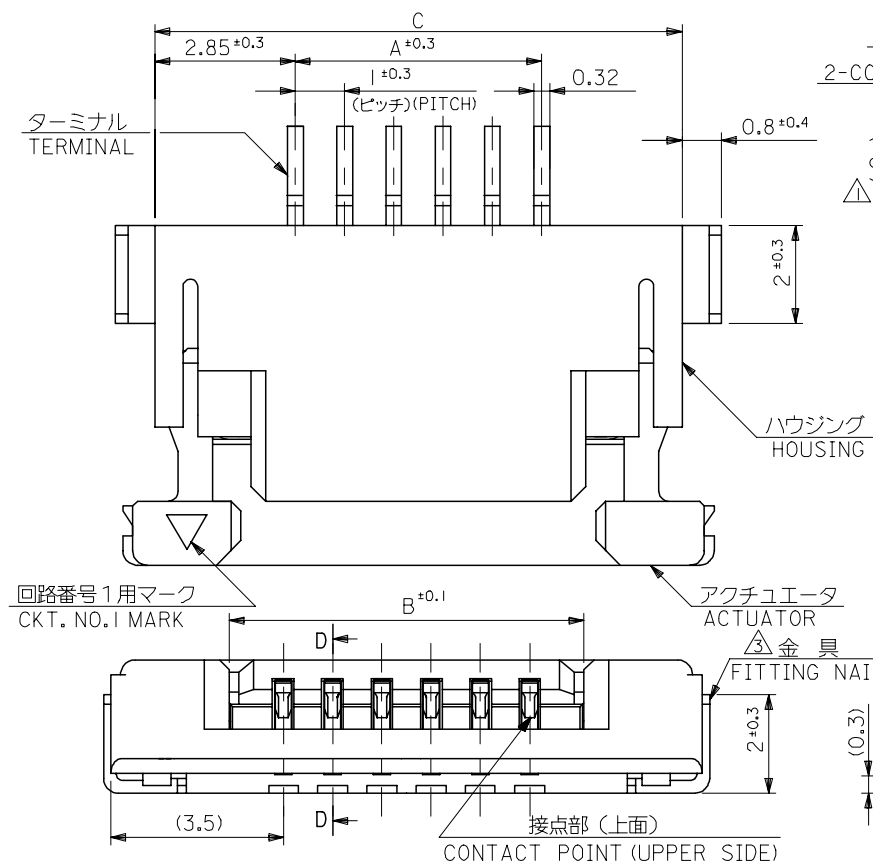
9 OF 11



【8. FPC保持力 FPC Retention Force】

極数 No. of CKT	単位 Unit	保持力(最小値) Retention Force (MIN.)		極数 No. of CKT	単位 Unit	保持力(最小値) Retention Force (MIN.)	
		初回 1st	10回目 10th			初回 1st	10回目 10th
3	N {kgf}	2.0 {0.20}	1.5 {0.15}	17	N {kgf}	8.9 {0.90}	8.4 {0.85}
4	N {kgf}	2.5 {0.25}	2.0 {0.20}	18	N {kgf}	9.4 {0.95}	8.9 {0.90}
5	N {kgf}	3.0 {0.30}	2.5 {0.25}	19	N {kgf}	9.8 {1.00}	9.4 {0.95}
6	N {kgf}	3.5 {0.35}	3.0 {0.30}	20	N {kgf}	10.3 {1.05}	9.8 {1.00}
7	N {kgf}	4.0 {0.40}	3.5 {0.35}	21	N {kgf}	10.8 {1.10}	10.3 {1.05}
8	N {kgf}	4.5 {0.45}	4.0 {0.40}	22	N {kgf}	11.3 {1.15}	10.8 {1.10}
9	N {kgf}	4.9 {0.50}	4.5 {0.45}	23	N {kgf}	11.8 {1.20}	11.3 {1.15}
10	N {kgf}	5.4 {0.55}	4.9 {0.50}	24	N {kgf}	12.3 {1.25}	11.8 {1.20}
11	N {kgf}	5.9 {0.60}	5.4 {0.55}	25	N {kgf}	12.8 {1.30}	12.3 {1.25}
12	N {kgf}	6.4 {0.65}	5.9 {0.60}	26	N {kgf}	13.3 {1.35}	12.8 {1.30}
13	N {kgf}	6.9 {0.70}	6.4 {0.65}	27	N {kgf}	13.8 {1.40}	13.3 {1.35}
14	N {kgf}	7.4 {0.75}	6.9 {0.70}	28	N {kgf}	14.3 {1.45}	13.8 {1.40}
15	N {kgf}	7.9 {0.80}	7.4 {0.75}	29	N {kgf}	14.7 {1.50}	14.3 {1.45}
16	N {kgf}	8.4 {0.85}	7.9 {0.80}	30	N {kgf}	15.2 {1.55}	14.7 {1.50}
				34	N {kgf}	17.2 {1.75}	16.7 {1.70}

REVISE ON PC ONLY		TITLE:	
A	SEE SHEET 1 OF 11	1.0mm PITCH FPC CONN. ZIF SMT R/A UPPER CONTACT -LEAD FREE- 製品仕様書	
		THIS DOCUMENT CONTAINS INFORMATION THAT IS PROPRIETARY TO MOLEX INC. AND SHOULD NOT BE USED WITHOUT WRITTEN PERMISSION	
REV.	DESCRIPTION		
DOCUMENT NUMBER PS-52207-047		FILE NAME PS52207047.doc	SHEET 10 OF 11
EN-37-1(019)			



C	B	A	MATERIAL NO.	極数 CKT.
38.7	35.2	33	52207-3419	34
34.7	31.2	29	-3019	30
33.7	30.2	28	-2919	29
32.7	29.2	27	-2819	28
31.7	28.2	26	-2719	27
30.7	27.2	25	-2619	26
29.7	26.2	24	-2519	25
28.7	25.2	23	-2419	24
27.7	24.2	22	-2319	23
26.7	23.2	21	-2219	22
25.7	22.2	20	-2119	21
24.7	21.2	19	-2019	20
23.7	20.2	18	-1919	19
22.7	19.2	17	-1819	18
21.7	18.2	16	-1719	17
20.7	17.2	15	-1619	16
19.7	16.2	14	-1519	15
18.7	15.2	13	-1419	14
17.7	14.2	12	-1319	13
16.7	13.2	11	-1219	12
15.7	12.2	10	-1119	11
14.7	11.2	9	-1019	10
13.7	10.2	8	-0919	9
12.7	9.2	7	-0819	8
11.7	8.2	6	-0719	7
10.7	7.2	5	-0619	6
9.7	6.2	4	-0519	5
8.7	5.2	3	-0419	4
7.7	4.2	2	52207-0319	3

注記 NOTES

- △ 接点部までの嵌合長さ。 LENGTH TO CONTACT POINT.
- 2. 使用材料 MATERIAL
 - ハウジング : 46ナイロン (耐熱性), UL94V-0
 - アクチュエータ : PPS, UL94V-0
 - ターミナル : PPS, UL94V-0
 - 金具 : 銅合金
 - 金具 FITTING NAIL : COPPER ALLOY
- △ パターンはくり止め用金具 FITTING NAIL FOR PREVENTION OF PEELING OF P.C.B.PATTERN.
- 4. エンボステープ梱包時は、アクチュエータがロックした状態とする。 IN THE PACKAGE, ACTUATOR OF PART NO. 52207-***19 SHOULD BE LOCKED.
- △ ケーブル挿入深さ INSERTION DEPTH OF CABLE.
- △ パターン書き込み禁止エリア。 NO FOOT PRINT AREA.
- 7. 本製品は、52207-***17 の鉛フリー品である。 THIS PRODUCT IS LEAD FREE OF 52207-***17.

FPCについて:
 打抜き方向は導体側から補強板を推奨致します。
 補強フィルム材質はポリイミドを推奨致します。
 接着剤は熱硬化接着剤を推奨致します。
 ABOUT FPC:
 RECOMMENDED PUNCHER DIRECTION : FROM CONDUCTOR SIDE TO STIFFENER BOARD SIDE.
 RECOMMENDED MATERIAL : STIFFENER FILM : POLYIMIDE
 BONDING AGENT : THERMOSETTING BONDING AGENT

REVISED EC NO: J2005-0105 DRAWN: MABEI CHKD: KTOJO APP: NUKITA	DESCRIPTION 2004/07/13 2004/07/13 2004/07/14	GENERAL TOLERANCES (UNLESS SPECIFIED)		DIMENSION STYLE		SCALE	DESIGN UNITS	MODEL NO.		
				MM ONLY		---	METRIC	THIRD ANGLE PROJECTION		
		10 UNDER	±0.2	DRAWN BY	DATE	TITLE				
		10 OVER 30 UNDER	±0.25	MINOMIY	'04/02/06	1.0 PITCH FPC CONN. ZIF SMT -LEAD FREE-				
30 OVER	±0.3	CHECKED BY	DATE	MOLEX INCORPORATED						
ANGULAR ±3 °		APPROVED BY	DATE	MATERIAL NO.		DOCUMENT NO.		SHEET NO.		
DRAFT WHERE APPLICABLE MUST REMAIN WITHIN DIMENSIONS		MSASAO	'04/02/06	SEE CHART		SD-52207-060		1 OF 2		
THIS DRAWING CONTAINS INFORMATION THAT IS PROPRIETARY TO MOLEX INCORPORATED AND SHOULD NOT BE USED WITHOUT WRITTEN PERMISSION										

10 9 8 7 6 5 4 3 2 1

F

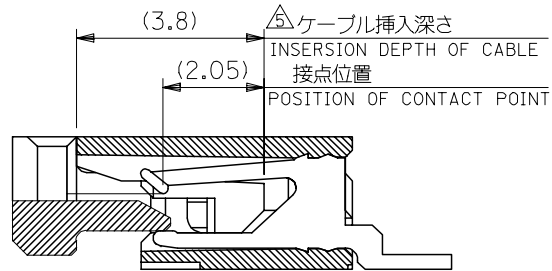
E

D

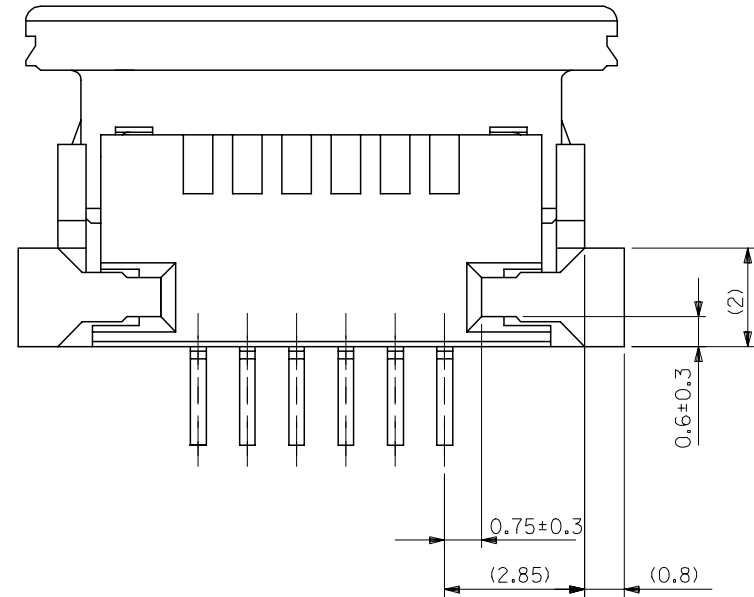
C

B

A



断面D-D
SECT.D-D



下面図
BOTTOM VIEW

REVISED EC NO: J2005-0105 2004/07/13 DRAWN: NABEI 2004/07/13 CHKD: KTOJO 2004/07/14 APPR: NUKITA 2004/07/14 DESCRIPTION REV	GENERAL TOLERANCES (UNLESS SPECIFIED)		DIMENSION STYLE MM ONLY		SCALE ---	52207-**-19 DESIGN UNITS METRIC	MODEL NO. ◎ □ THIRD ANGLE PROJECTION
	10 UNDER	±0.2	DRAWN BY MNINOMIY		DATE '04/02/06	TITLE 1.0 PITCH FPC CONN ZIF SMT -LEAD FREE-	
	10 OVER 30 UNDER	±0.25	CHECKED BY KTOJO		DATE '04/02/06	APPROVED BY MSASAO	
	30 OVER	±0.3	APPROVED BY MSASAO		DATE '04/02/06	DOCUMENT NO. SD-52207-060	
	ANGULAR	±3 °	MATERIAL NO. SEE CHART		DOCUMENT NO. SD-52207-060		SHEET NO. 2 OF 2
DRAFT WHERE APPLICABLE MUST REMAIN WITHIN DIMENSIONS		SIZE A3		THIS DRAWING CONTAINS INFORMATION THAT IS PROPRIETARY TO MOLEX INCORPORATED AND SHOULD NOT BE USED WITHOUT WRITTEN PERMISSION			

9

8

7

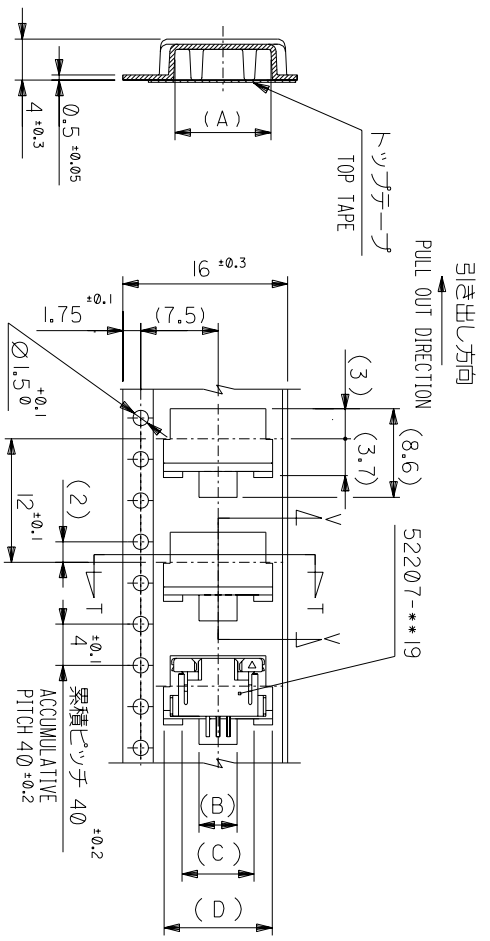
6

5

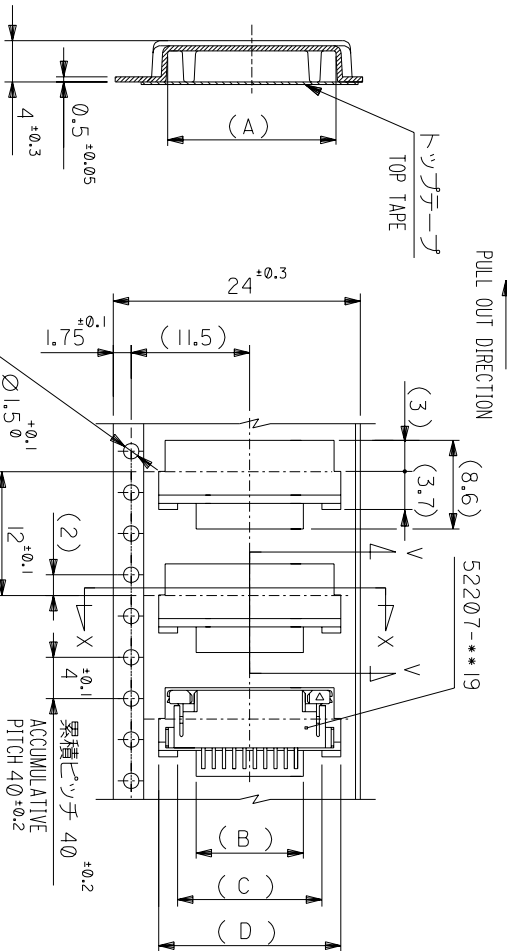
4

3

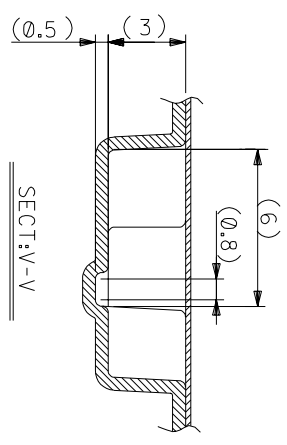
2



SECT:T-T
16mm 幅キャリアテープ
16mm WIDTH CARRIER TAPE



SECT:X-X
24mm 幅キャリアテープ
24mm WIDTH CARRIER TAPE



SECT:V-V

52207-***85	MODEL NO.
30°	角度 ANGLE
30mm以上	30mm以上
未滿	未滿
30mm以下	30mm以下
未滿	未滿
0	記号
0	一般公差

16	キャリアテープ幅 CARRIER TAPE WIDTH
24	キャリアテープ幅 CARRIER TAPE WIDTH
21.4	H
17.4	E
10.5	(D)
7	(C)
3.7	(B)
9.3	(A)

18.5	15	11.7	17.3	52207-1185	11
17.5	14	10.7	16.3	4	-1085
16.5	13	9.7	15.3	9	-0985
15.5	12	8.7	14.3	8	-0885
14.5	11	7.7	13.3	7	-0785
13.5	10	6.7	12.3	6	-0685
12.5	9	5.7	11.3	5	-0585
11.5	8	4.7	10.3	4	-0485
10.5	7	3.7	9.3	3	52207-0385

材料	注記参照	モジュール	モジュール
仕上り	FINISH	モジュール	モジュール
適用電線範囲	適用電線範囲	モジュール	モジュール
検査外径	検査外径	モジュール	モジュール
INS. RANGE	INS. RANGE	モジュール	モジュール
DRAWN BY 04/02/06 CHK'D BY 04/02/06	尺度	DWG. NO. SD-52207-061	REV
APP'D BY 04/02/06 K.I.OJO	SCALE	(SHEET 1 OF 3)	A

THIS DRAWING CONTAINS INFORMATION THAT IS PROPRIETARY TO MOLEX/JAPAN AND SHOULD NOT BE USED WITHOUT WRITTEN PERMISSION FROM MOLEX/JAPAN. 本図面は日本モリス(株)の所有する情報を含むもので、当社の許可なく複製を禁止する。

