

注記 NOTES

1. 使用材料 MATERIAL  
 ハウジング : 46ナイロン, UL94V-0  
 HOUSING : 46NYLON  
 アクチュエータ : PPS, UL94V-0  
 ACTUATOR  
 ターミナル : リン青銅, 金メッキ (t=0.2)  
 TERMINAL : PHOS-BRO, GOLD PLATED  
 金具 : リン青銅, 錫メッキ (t=0.2)  
 FITTING NAIL : PHOS-BRO, Sn PLATED
- △ パターンはくり止め用金具  
 FITTING NAIL FOR PREVENTION OF PEELING OF P.C.B. PATTERN.
- △ ソルダテール半田付け面のズレ量、及び金具半田付け面のズレ量は、基準面 Y に対し上方向 0.05MAX.、下方向 0.2MAX. とし、相互のバラツキ量は 0.15MAX. とする。  
 MISALIGNMENT OF SOLDER TAILS AND FITTING NAILS FROM Y  
 UPPER DIRECTION: 0.05 MAX., LOWER DIRECTION: 0.2 MAX.  
 OFFSET BETWEEN UPPER AND LOWER: 0.15MAX.
- △ 偶数極に適用。  
 APPLY FOR EVEN CIRCUIT.
- △ 18種以上は2ヶ所、10~16種はハウジングセンター上に1ヶ所とする。  
 18 CKTS & MORE THAN 18 CKTS PLACED 2 POINT.  
 10~16 CKTS PLACED 1 POINT ON HOUSING CENTER.
6. 本製品は 52893シリーズの金メッキ品である。  
 THIS PRODUCT IS Au PLATING OF 52893 SERIES.

15.3	15.5	14.5	19.6	52893-3058	30
13.3	13.5	12.5	17.6	-2658	26
12.3	12.5	11.5	16.6	-2458	24
11.3	11.5	10.5	15.6	-2258	22
10.3	10.5	9.5	14.6	-2058	20
9.3	9.5	8.5	13.6	-1858	18
8.8	9.0	8.0	13.1	-1758	17
8.3	8.5	7.5	12.6	-1658	16
7.8	8.0	7.0	12.1	-1558	15
6.3	6.5	5.5	10.6	-1258	12
5.3	5.5	4.5	9.6	-1058	10
4.3	4.5	3.5	8.6	52893-0858	8
D	C	(B)	A	MATERIAL NO.	極数 CIRCUIT

REVISED EC NO: J2006-1389 DRWN: NABE1 2005/10/31 CHKD: KTOYODA 2005/11/01 APPR: NUKITA 2005/11/04 B REV	GENERAL TOLERANCES (UNLESS SPECIFIED)		DIMENSION STYLE MM ONLY		SCALE ---	DESIGN UNITS METRIC	THIRD ANGLE PROJECTION	
	10 UNDER ±0.2 10 OVER 30 UNDER ±0.25 30 OVER ±0.3	ANGULAR ±3 °	DRAFT WHERE APPLICABLE MUST REMAIN WITHIN DIMENSIONS	DRAWN BY DATE M. NABE1 '05/06/07 CHECKED BY DATE K. TOYODA '05/06/07 APPROVED BY DATE N. UKITA '05/06/07	TITLE 0.5 FPC CONN ZIF EO HSG ASSY BTM CONT -LEAD FREE- MOLEX MOLEX INCORPORATED			
	SEE CHART			MATERIAL NO. SIZE A3	DOCUMENT NO. SD-52893-044	SHEET NO. 1 OF 2		
	THIS DRAWING CONTAINS INFORMATION THAT IS PROPRIETARY TO MOLEX INCORPORATED AND SHOULD NOT BE USED WITHOUT WRITTEN PERMISSION							
	MODEL No. 52893-xx58							

10 9 8 7 6 5 4 3 2 1

F

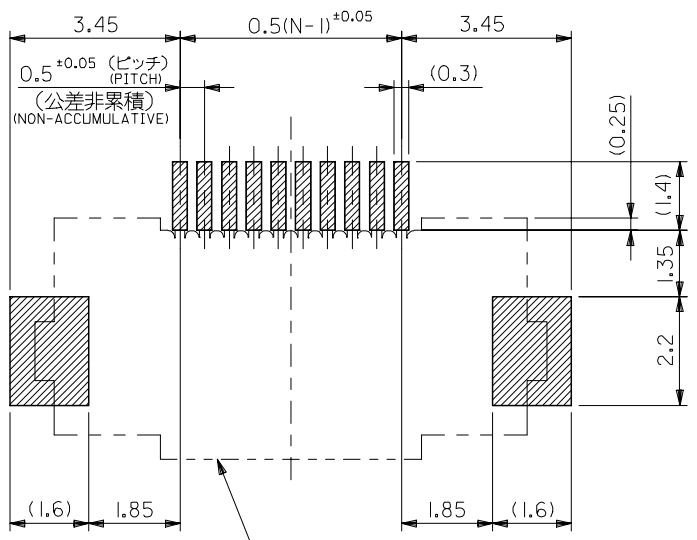
E

D

C

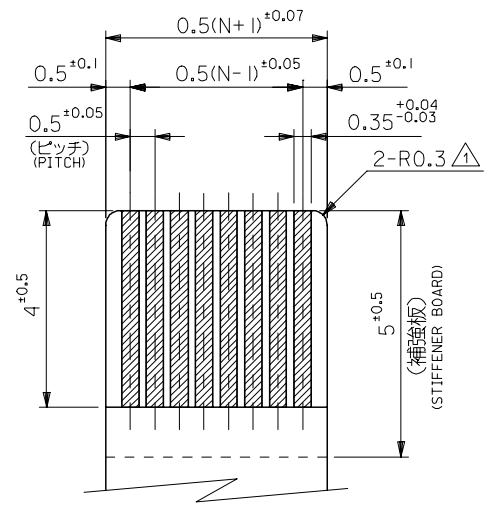
B

A

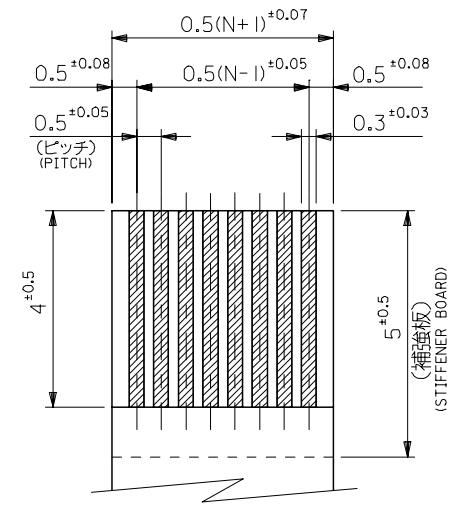


コネクタ位置  
CONNECTOR POSITION

参考基板レイアウト  
P.C. BOARD PATTERN  
DIMENSION (REF.)  
(マウント面)  
(MOUNTING SIDE)



適合FPC推奨寸法  
APPLICABLE FPC  
RECOMMENDED DIMENSION  
(仕上がり厚さ: 0.3 ± 0.03)  
(THICKNESS: 0.3 ± 0.03)



適合FFC推奨寸法  
APPLICABLE FFC  
RECOMMENDED DIMENSION  
(仕上がり厚さ: 0.3 ± 0.03)  
(THICKNESS: 0.3 ± 0.03)

FPCについて:

- 打抜き方向は、導体側から補強板側を推奨いたします。
- 補強フィルム材質は、ポリイミドを推奨いたします。
- 接着剤は、熱硬化接着剤を推奨いたします。

ABOUT FPC:

- RECOMMENDED PUNCHER DIRECTION: FROM CONDUCTOR SIDE TO STIFFENER BOARD SIDE.
- RECOMMENDED MATERIAL:
- STIFFENER FILM: POLYIMIDE
- BONDING AGENT: THERMOSETTING BONDING AGENT

注記 NOTES

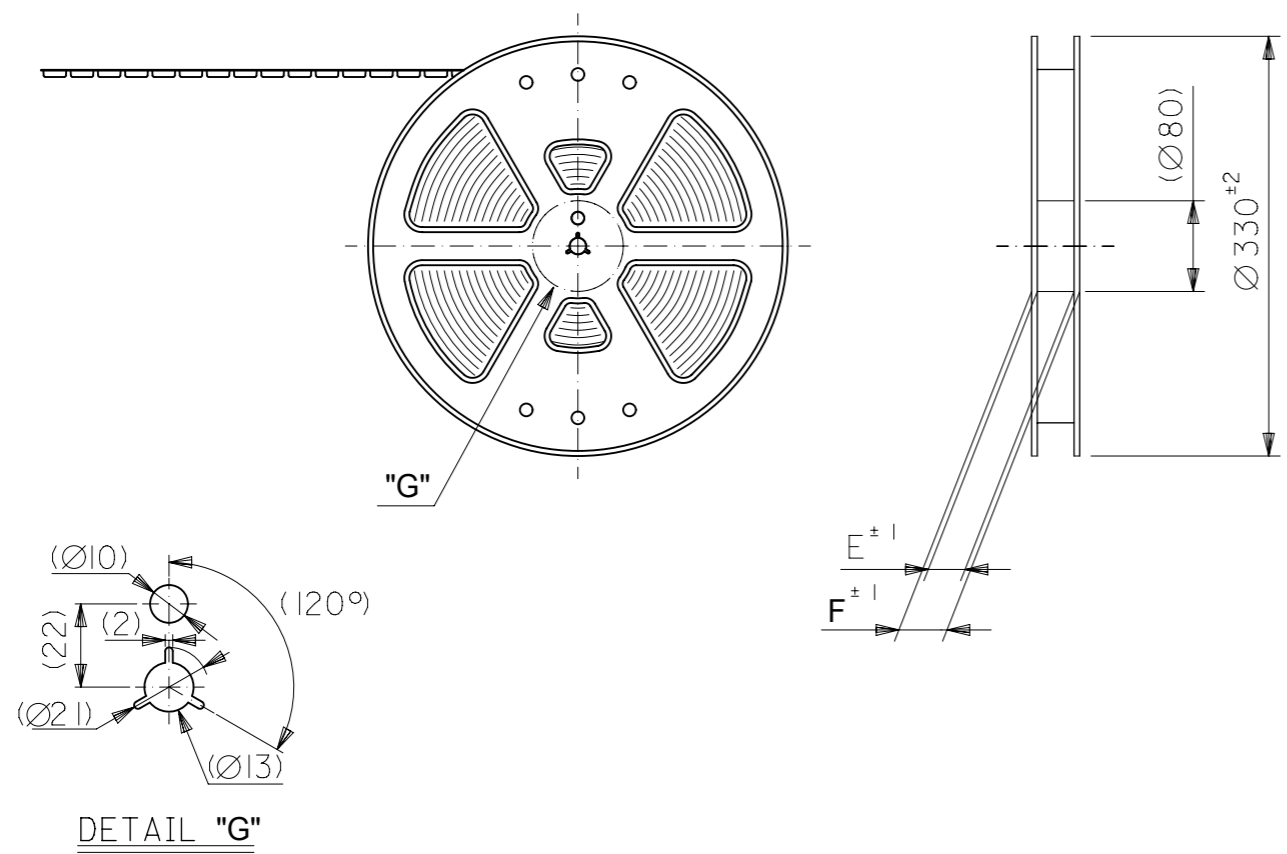
- △ R.O. 3は、FPCの導体部にかからないこと。  
R.O.3 MUST NOT BE OVERLAPPED TO PATTERN OF FPC.

REVISED EC NO: J2006-1389 DRAWN: M.NABEI CHKD: K.TOYODA APPR: N.UKITA	DESCRIPTION 2005/10/31 2005/11/01 2005/11/04	GENERAL TOLERANCES (UNLESS SPECIFIED)		DIMENSION STYLE MM ONLY		SCALE ---	DESIGN UNITS METRIC	MODEL NO. 52893-**58	THIRD ANGLE PROJECTION
		10 UNDER	± 0.2	DRAWN BY M.NABEI	DATE '05/06/07	TITLE 0.5 FPC CONN ZIF EO HSG ASSY BTM CONT -LEAD FREE-			
		10 OVER 30 UNDER	± 0.25	CHECKED BY K.TOYODA	DATE '05/06/07	MOLEX INCORPORATED			
		30 OVER	± 0.3	APPROVED BY N.UKITA	DATE '05/06/07	DOCUMENT NO. SD-52893-044			
ANGULAR ± 3 °		DRAFT WHERE APPLICABLE MUST REMAIN WITHIN DIMENSIONS		MATERIAL NO. SEE CHART		SHEET NO. 2 OF 2			
SIZE A3		THIS DRAWING CONTAINS INFORMATION THAT IS PROPRIETARY TO MOLEX INCORPORATED AND SHOULD NOT BE USED WITHOUT WRITTEN PERMISSION							

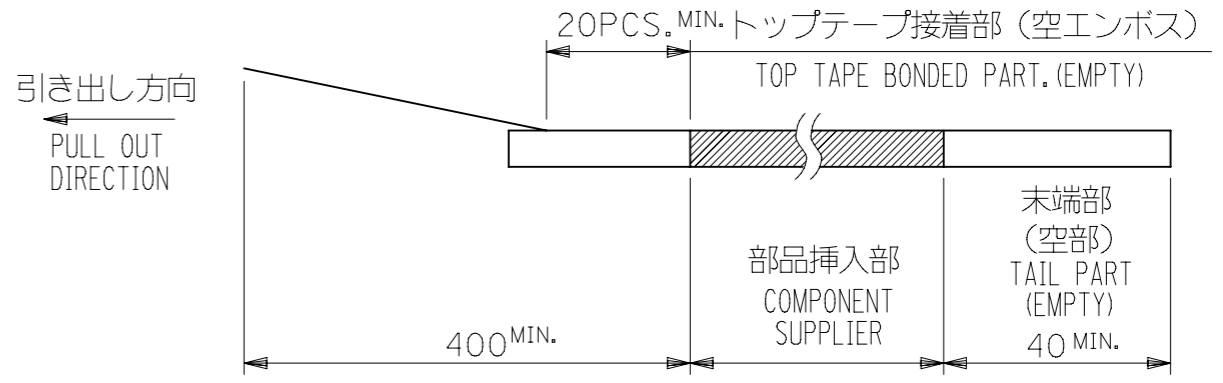
注記 NOTES

- 1. 製品詳細寸法については図面 SD-52893-044 を参照下さい。  
RE DETAILED DIMENSION, SEE SD-52893-044
- 2. 梱包数量：1000個/リール  
NUMBER OF CONNECTORS : 1000PCS/REEL
- 3. リードテープ長さ LEAD TAPE LENGTH

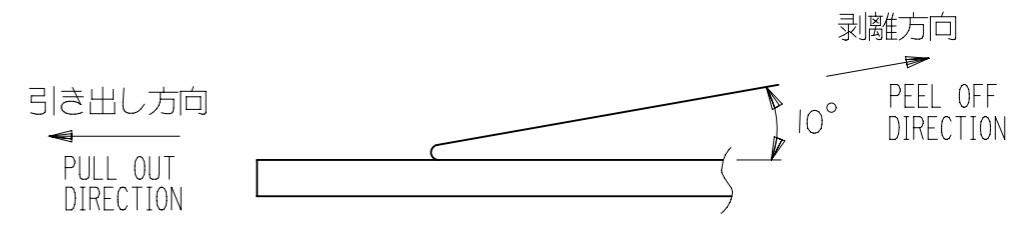
引き出し方向  
←  
PULL OUT DIRECTION



引き出し方向  
←  
PULL OUT DIRECTION



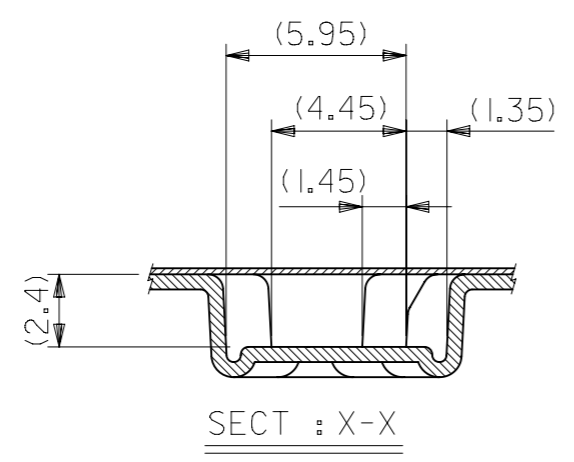
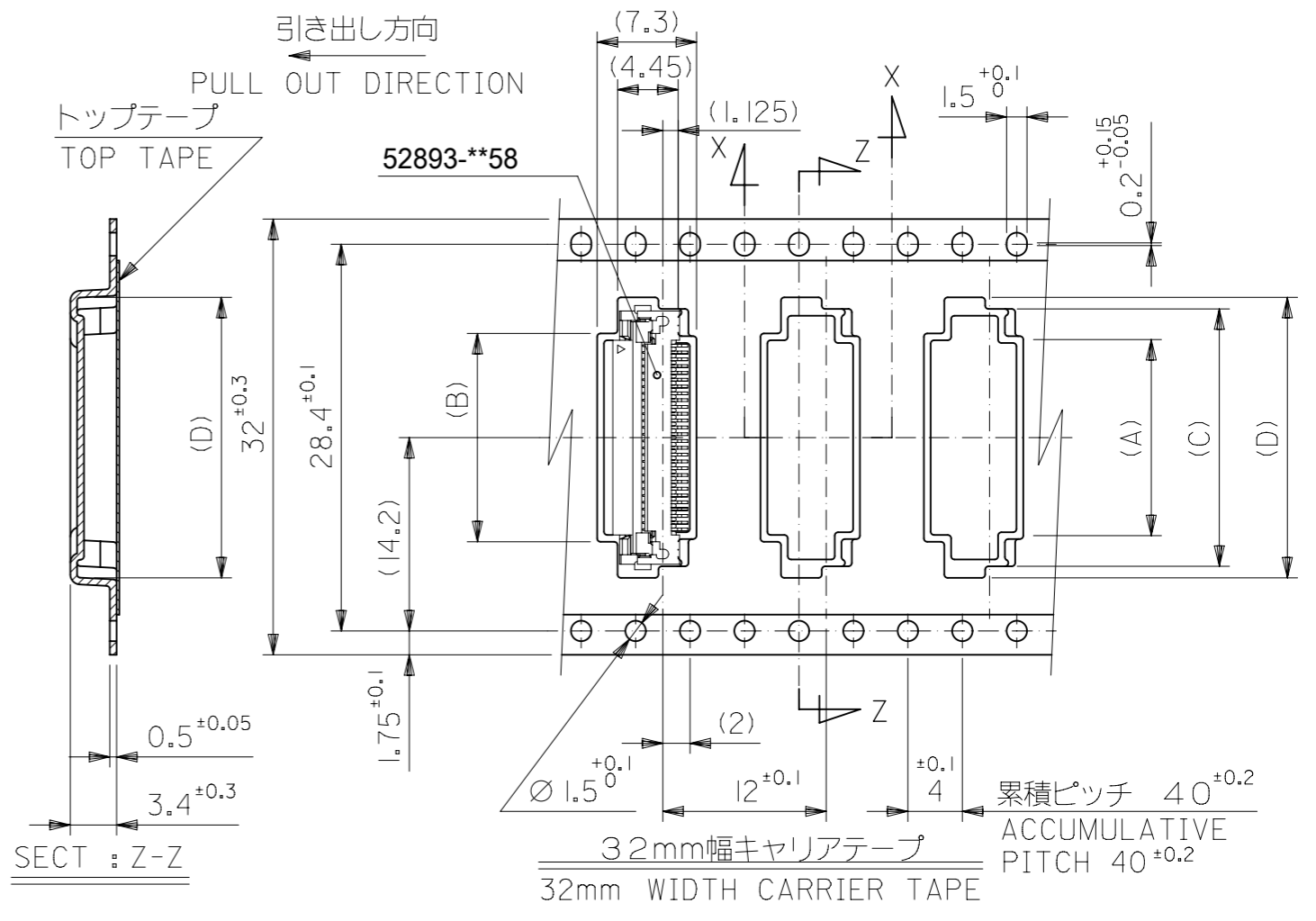
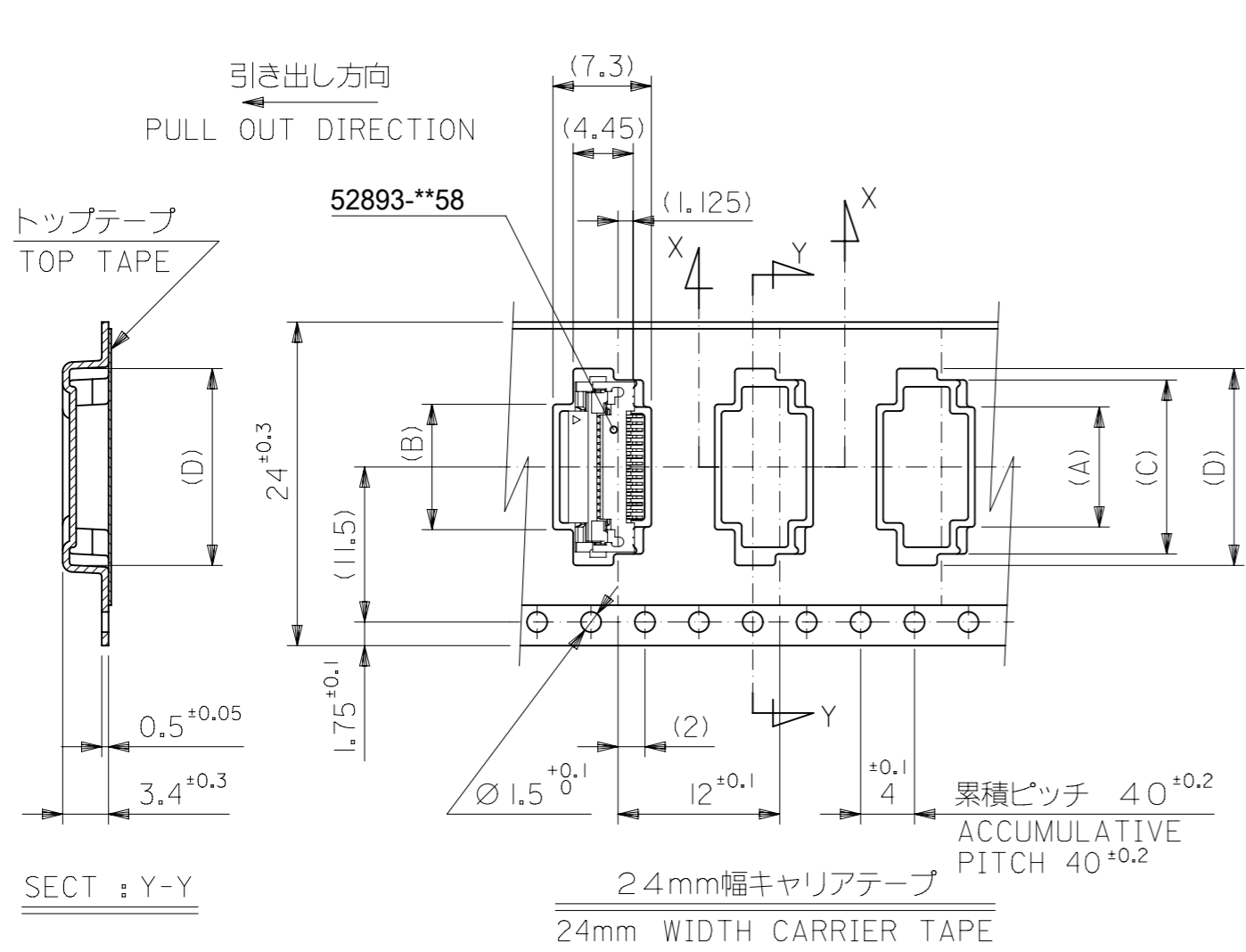
- 4. トップテープの剥離強度：0.1 ~ 1.3N {10 ~ 130gf} (剥離方向は下図参照)  
尚、本規格値は出荷時に適用。(但し、輸送時に剥離が発生しないこと。)  
PEELING OFF FORCE OF TOP TAPE : 0.1 ~ 1.3N {10 ~ 130gf}  
(PEELING DIRECTION AS SHOWN IN FOLLOWING FIG.)  
THIS REQUIREMENT SHOULD BE APPLIED AT SHIPMENT.  
PEEL OFF SHOULD NOT BE ALLOWED , DURING TRANSPORTATION.



- 5. 材料 (MATERIAL)  
キャリアテープ (CARRIER TAPE) : ポリプロピレン (POLYPROPYLENE)  
トップテープ (TOP TAPE) : PET , PE , PEF  
リール (REEL) : ポリスチレン (PS) <リサイクル材を含む>  
POLYSTYRENE (PS) <RECYCLE MATERIAL CONTAINED>
- 6. 本製品は 52893 シリーズの金メッキ品である。  
THIS PRODUCT IS Au PLATING OF 52893 SERIES.

52893-\*\*96 MODEL NO.

THIS DRAWING CONTAINS INFORMATION THAT IS PROPRIETARY TO MOLEX ELECTRONIC TECHNOLOGIES, LLC AND SHOULD NOT BE USED WITHOUT WRITTEN PERMISSION		SCALE		CURRENT REV DESC: OBSOLETE PART NUMBER		<b>molex</b>	
DIMENSION UNITS		mm NTS		NUMBER			
GENERAL TOLERANCES (UNLESS SPECIFIED)				EC NO: 632260		EMBSTP PKG FOR 0.5 FPC CONN ZIF EO -LEAD FREE-	
		MM INCH		DRWN: AKUMAR19 2020/01/30		PRODUCT CUSTOMER DRAWING	
4 PLACES ±		±		CHK'D: GGA 2020/02/28		DOCUMENT NUMBER	
3 PLACES ±		±		APPR: GGA 2020/02/28		SD-52893-045	
2 PLACES ±		±		INITIAL REVISION:		DOC TYPE DOC PART REVISION	
1 PLACE ±		±		DRWN: M.NABEI 2005/06/07		PSD 001 C	
0 PLACES ±		±		APPR: N.UKITA 2005/06/07		MATERIAL NUMBER CUSTOMER	
ANGULAR TOL ± °		± °		DRAWING		SEE TABLE GENERAL MARKET	
DRAFT WHERE APPLICABLE MUST REMAIN WITHIN DIMENSIONS		THIRD ANGLE PROJECTION		SERIES		SHEET NUMBER	
		A3-SIZE		52893		1 OF 2	



32	37.4	33.4	21.6	19.9	16.1	15.9	52893-3096	30
24	29.4	25.4	18.6	16.9	13.1	12.9	52893-2496	24
キャリアテープ幅 CARRIER TAPE WIDTH	F	E	(D)	(C)	(B)	(A)	MATERIAL NO.	極数 CIRCUIT

52893-\*\*96 MODEL NO.

THIS DRAWING CONTAINS INFORMATION THAT IS PROPRIETARY TO MOLEX ELECTRONIC TECHNOLOGIES, LLC AND SHOULD NOT BE USED WITHOUT WRITTEN PERMISSION		SCALE mm NTS		CURRENT REV DESC: OBSOLETE PART NUMBER		<b>molex</b>	
GENERAL TOLERANCES (UNLESS SPECIFIED)		EC NO: 632260		DRWN: AKUMAR19 2020/01/30			
4 PLACES ± ±		MM INCH		CHK'D: GGA 2020/02/28		PRODUCT CUSTOMER DRAWING	
3 PLACES ± ±				APPR: GGA 2020/02/28		DOCUMENT NUMBER	
2 PLACES ± ±				INITIAL REVISION:		SD-52893-045	
1 PLACE ± ±				DRWN: M.NABEI 2005/06/07		DOC TYPE DOC PART REVISION	
0 PLACES ± ±				APPR: N.UKITA 2005/06/07		PSD 001 C	
ANGULAR TOL ± °				DRAFT WHERE APPLICABLE MUST REMAIN WITHIN DIMENSIONS		MATERIAL NUMBER CUSTOMER SHEET NUMBER	
		THIRD ANGLE PROJECTION		DRAWING SERIES		SEE TABLE GENERAL MARKET 2 OF 2	