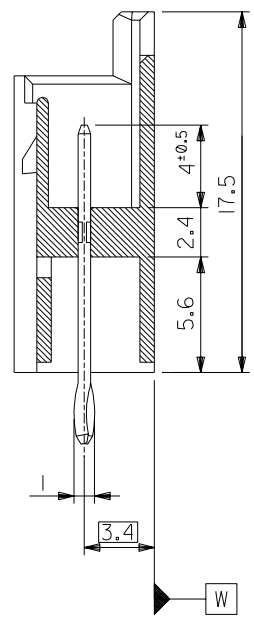
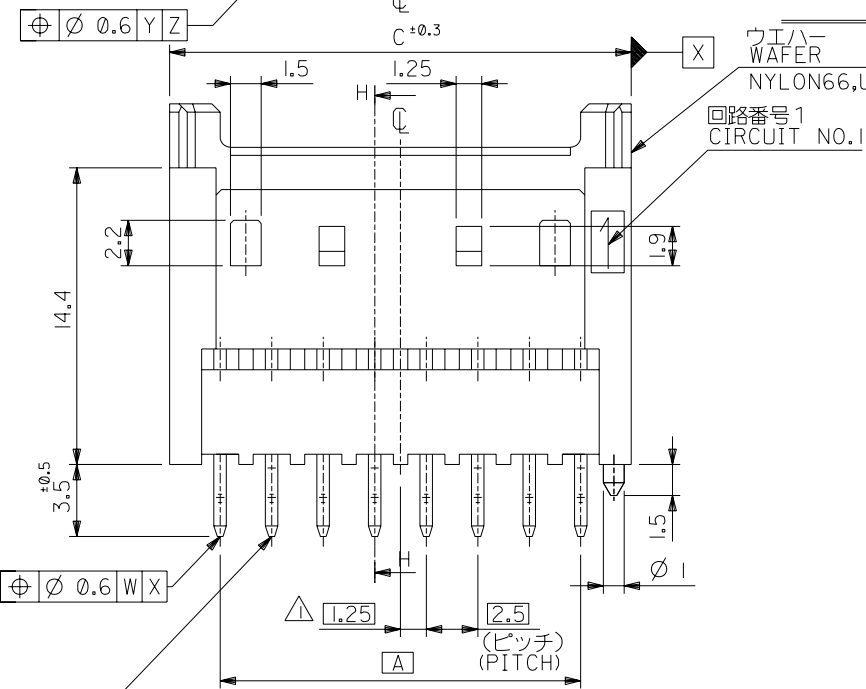


注記
NOTES

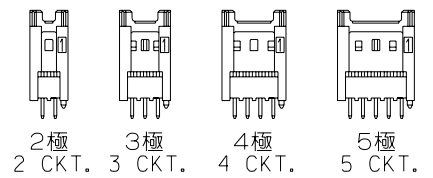
△ 偶数極品に適用。
APPLIES ONLY TO EVEN NO. CKT. SIZES.

2. 嵌合相手 : 51103, 51136 シリーズ
MATES WITH : 51103, 51136 SERIES.

基板取付穴推奨寸法 (マウント面)
RECOMMENDED P.C. BOARD HOLE DIMENSION
(MOUNTING SIDE)
(t=1.6) (SCALE 5 : 1)

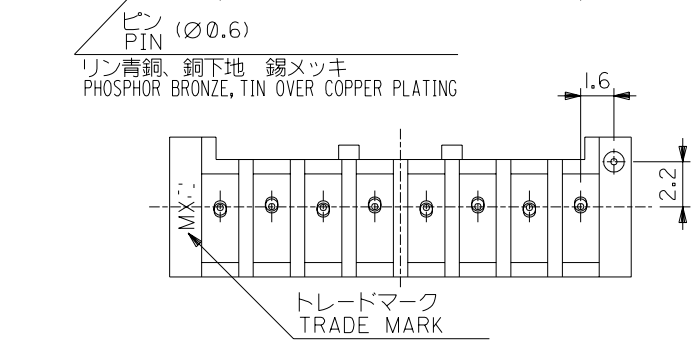


断面 H-H
SECT. H-H



ロック形状図
LOCK CONFIGURATION

39.9	38.2	35	53517-1510	15
37.4	35.7	32.5	-1410	14
34.9	33.2	30	-1310	13
32.4	30.7	27.5	-1210	12
29.9	28.2	25	-1110	11
27.4	25.7	22.5	-1010	10
24.9	23.2	20	-0910	9
22.4	20.7	17.5	-0810	8
19.9	18.2	15	-0710	7
17.4	15.7	12.5	-0610	6
14.9	13.2	10	-0510	5
12.4	10.7	7.5	-0410	4
9.9	8.2	5	-0310	3
7.4	5.7	2.5	53517-0210	2
C	B	A	MATERIAL NO.	極数 NO. OF CKTS.



角度 ANGLE		±3°	C	変更 REVISD (J2004-3573)	Y.W	04/04/05	材料 MATERIAL	図中参照 SEE DRAWING	molex MOLEX-JAPAN CO.,LTD. 日本モレックス株式会社
30°以上 OVER		+0.3	B	変更 REVISD (JC00152)	NY M.S	99/8/24	仕上げ FINISH	—	
10°以上 30°未満 UNDER		+0.25	A	変更 REVISD (JC70297)	K.T S.K	'96/9/13	適用電線範囲 WIRE RANGE	—	TITLE 名称
10°未満 UNDER		+0.2	0	新規作成 RELEASED (J40374)	K.T H.H	'94/5/16	被覆外径 INS. RANGE	—	2.5 WIRE TO BOARD CONN. WAFER ASS'Y WITH KINK -LEAD FREE-
一般公差 GENERAL TOLERANCES			記号 LTR	変更内容 REVISION RECORD	DR. CHK.	日付 DATE	DRAWN BY '94/5/16 K.TOJO	CHK'D BY '99/8/24 S.KUNISHI	DWG. NO.
							APP'D BY '99/8/24 M.FUKUSHIMA	尺度 SCALE 4 : 1	SD-53517-**-10
									REV C