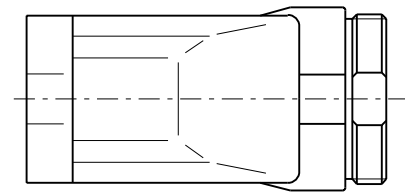


PG 29 雄ネジ
PG 29 EXTERNAL THREAD



注)
NOTES

- 1. 適用リセプタクルシェルアッセンブリ: 58691-****0
APPLICABLE RECEPTACLE SHELL ASS'Y: 58691-****0
- 2. 適用エンドベルキャップセット: 58550-****
APPLICABLE END BELL CAP SET: 58550-****
- 3. 適用取り付けねじ (リセプタクルシェルアッセンブリ): M4x8
APPLICABLE SCREW (RECEPTACLE SHELL ASS'Y): M4x8

56386-0000	56386-0*00
MATERIAL No.	MODEL NO.

DO NOT SCALE DRAWING

EC NO. DRWN: CHK: APPR:	EC NO. DRWN: CHK: APPR:	EC NO. DRWN: CHK: APPR:	EC NO. DRWN: CHK: APPR:	EC NO. DRWN: CHK: APPR:	O RELEASED '01/01/22 EC NO. JD2001-0972 DRWN: S.AKIYAMA CHK: J.MIYAZAWA APPR: H.HIKESUGI	REV DESCRIPTION	MATERIAL 材料	#	GENERAL TOLERANCES: (UNLESS SPECIFIED) 一般公差	SCALE 1:1	DESIGN UNITS <input checked="" type="checkbox"/> mm <input type="checkbox"/> INCH	THIRD ANGLE PROJECTION <input type="checkbox"/> mm <input type="checkbox"/> INCH <input checked="" type="checkbox"/> mm ONLY	DIMENSIONS: <input type="checkbox"/> mm <input type="checkbox"/> INCH	SHT	REV
							FINISH 仕上り								
							WIRE RANGE 適用線径範囲	#							
							INS. RANGE 被覆外径	#							
							ANGLE 角度	+3°							
CAD FILE NAME 56386002.S01												MATERIAL NO. SEE CHART	DRAWING NO. SD-56386-002	SHEET NO. 1 OF 1	
THIS DRAWING CONTAINS INFORMATION THAT IS PROPRIETARY TO MOLEX INCORPORATED AND SHOULD NOT BE USED WITHOUT WRITTEN PERMISSION.															