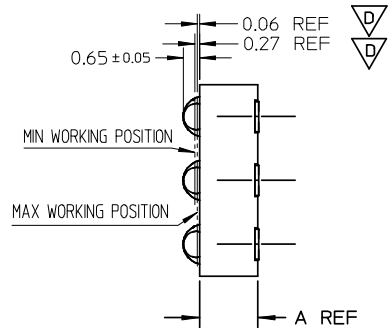
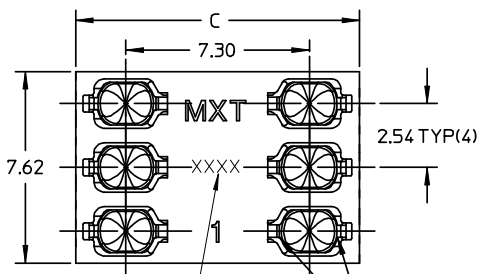


10 9 8 7 6 5 4 3 2 1



DIMENSION E	DIMENSION D	DIMENSION C	DIMENSION A	PART NUMBER
9.95	1.00	11.30	1.80	67687-1850
10.05	1.20	11.70	2.00	67687-2050
9.95	1.00	11.30	2.30	67687-2350
9.95	1.00	11.30	2.45	67687-2550
9.95	1.00	11.30	2.90	67687-2950
9.95	1.00	11.30	3.50	67687-3550

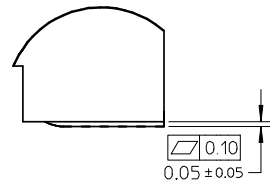
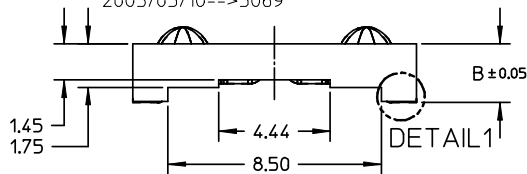
*.DIMB=DIMA+0.05

DATE CODE (INK JET)

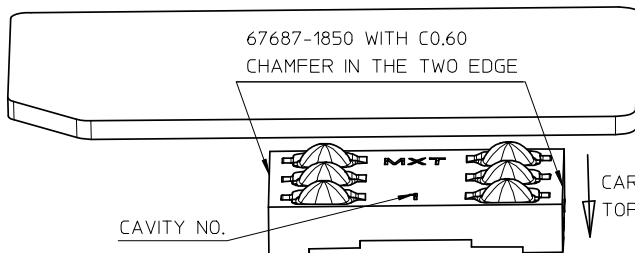
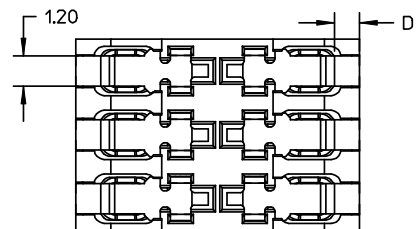
X X X X _ DAY COUNTED FROM FIRST
 _ _ _ _ DAY OF THE YEAR
 - - - - YEAR

EX. 2002/01/15-->2015
 2002/02/10-->2041
 2003/03/10-->3069

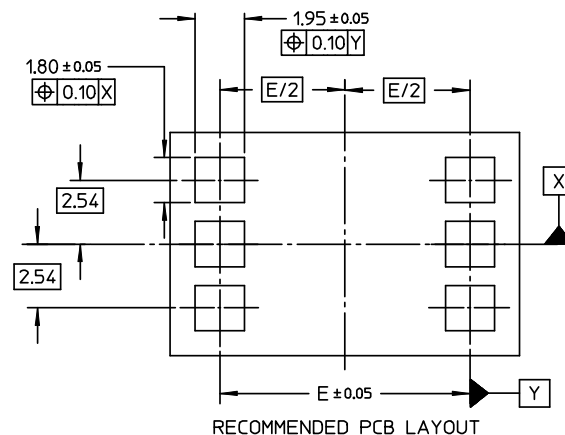
VISIBLE AREA



DETAIL 1



CARD INSERT DIRECTION
 TOP DOWN



RECOMMENDED PCB LAYOUT

NOTES:

- 1 MATERIAL:
HOUSING: HIGH TEMPERATURE PLASTIC,
TERMINAL: COPPER ALLOY
- 2. PLATING:
CONTACT AREA PLATING:
30u" MIN GOLD OVER 50u" MIN NICKEL PLATING
SOLDERING AREA PLATING:
100u" MIN PURE TIN OVER 50u" MIN NICKEL PLATING
VISIBLE AREA PLATING:
GOLD FLASH OVER 50u" MIN NICKEL PLATING
- 3. PACKAGING: TAPE REEL
- 4. PRODUCT SPECIFICATION: PS-67687-001
- 5. COMPLIANT TO RoHS DIRECTIVE 2002/95/EC AND
ELV DIRECTIVE 2000/53/EC.

RELEASE EC NO: SH2008-0471 DRW: PFCU CHKD: YLZHUO APPR: HWANG	2008/03/25	2008/04/11	2008/07/02
	DRW: PFCU	CHKD: YLZHUO	APPR: HWANG
	2008/03/25	2008/04/11	2008/07/02
	DRW: PFCU	CHKD: YLZHUO	APPR: HWANG

QUALITY SYMBOLS	GENERAL TOLERANCES (UNLESS SPECIFIED)	
	mm	INCH
▽=0	4 PLACES ± ---	± ---
▽=0	3 PLACES ± ---	± ---
▽=0	2 PLACES ± 0.05	± ---
▽=0	1 PLACE ± 0.10	± ---
	ANGULAR ± 2 °	

DIMENSION STYLE		SCALE	DESIGN UNITS	THIRD ANGLE PROJECTION
MM ONLY		5:1	METRIC	THIRD ANGLE PROJECTION
DRAWN BY	DATE	TITLE		
SSUN	2004/11/04	6 CKTS SIM CARD CONNECTOR SD DRAWING		
CHECKED BY	DATE			
RZHAO	2004/11/04			
APPROVED BY	DATE			
SAMHUANG	2004/11/04			
MATERIAL NO.	DOCUMENT NO.			
SEE TABLE	SD-67687-511			
SIZE	THIS DRAWING CONTAINS INFORMATION THAT IS PROPRIETARY TO MOLEX INCORPORATED AND SHOULD NOT BE USED WITHOUT WRITTEN PERMISSION			
A3				

MOLEX INCORPORATED		SHEET NO.
		1 OF 1

9 8 7 6 5 4 3 2 1