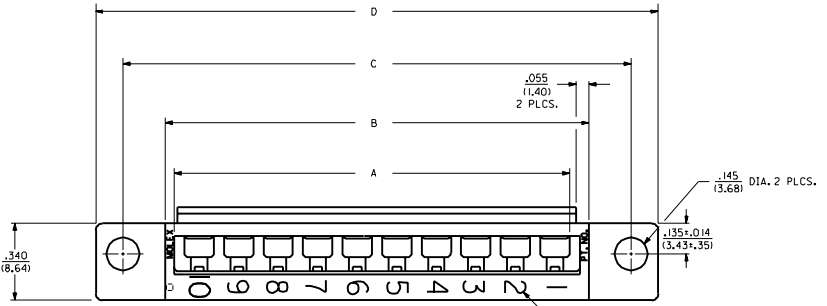
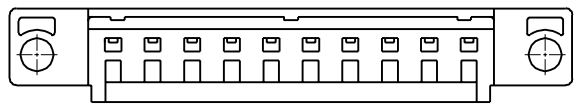
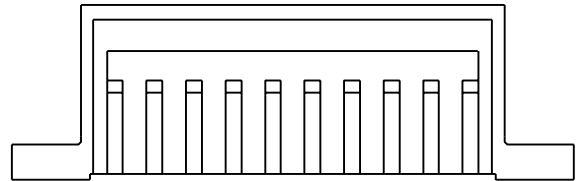
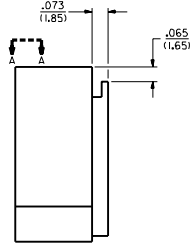
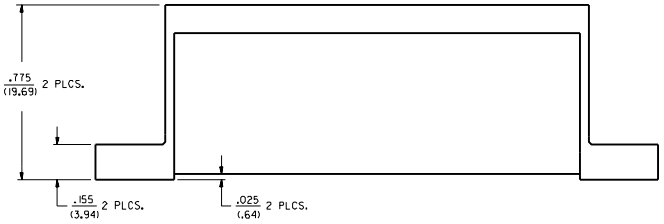


NOTES:

- △ THESE HOUSINGS ARE FOR USE WITH THE 145T-** TERMINALS AND MAY BE SUBDIVIDED BY USING THE 1461-K KEY.
 - △ THE HOUSINGS ARE ONLY AVAILABLE IN 5, 10, 15, AND 20 CIRCUIT SIZES.
 - △ PRODUCT SPECIFICATION PS 50-36 APPLIES.
 - △ THESE HOUSINGS CONFORM TO UL, AND C.S.A. REQUIREMENTS.
 - △ .060/(1.52) HIGH RAISED NUMERALS.
 - △ .125/(3.18) HIGH RECESSED NUMERALS ON A MATTE BACKGROUND.
 - △ .09/(2.31) HIGH INK STAMPED NUMERALS.
- B. PACKAGE PER PK-1461-100.



VIEW A-A



P	ADD PKG NOTE PER 1002001-0088 SCHAFFER 99/12/2
4 01	REVISED UT0040
3 02	REVISED FOR SCARTH
2 01	REVISED EDN 18, 04/25
1 01	REVISED 12/24/95

MOLEX INCORPORATED
 HOUSING, COMMONING (.025/(.64) OFFSET)
 SD-1461-*

DATE: 02/18/91
 SHEET: 1 of 4

SCALE: 4:1

DESIGNED BY: []
 CHECKED BY: []
 DRAWN BY: []
 APPROVED BY: []

PART NO.	ENG. NO.	NO. CKTS.	DIM. A	DIM. B	DIM. C	DIM. D
07-01-7201	1461-20	20	3.50 (88.9)	3.63 (92.2)	4.00 (101.6)	4.24 (107.7)
07-01-7151	1461-15	15	2.62 (66.5)	2.75 (69.9)	3.13 (79.5)	3.37 (85.6)
07-01-7101	1461-10	10	1.750 (44.45)	1.875 (47.63)	2.250 (57.15)	2.49 (63.2)
07-01-7051	1461-5	5	.875 (22.23)	1.000 (25.40)	1.375 (34.93)	1.615 (41.02)

SPECIAL NUMBERED HOUSINGS CHART			
PART NO.	ENG. NO.	NO. CKTS.	CIRCUIT NUMERALS
07-01-7102	1461-10-1	10	11 THRU 20
07-01-7103	1461-10-2	10	21 THRU 30
07-01-7104	1461-10-3	10	31 THRU 40
07-01-7152	1461-15-1	15	16 THRU 30
07-01-7153	1461-15-2	15	31 THRU 45
07-01-7154	1461-15-3	15	46 THRU 60
07-01-7202	1461-20-1	20	21 THRU 40
07-01-7203	1461-20-2	20	41 THRU 60
07-01-7204	1461-20-3	20	61 THRU 80

INK STAMPED HOUSINGS								
BEFORE INK STAMP		AFTER INK STAMP		NO. CKTS.	DIM. A	DIM. B	DIM. C	DIM. D
PART NO.	ENG. NO.	PART NO.	ENG. NO.					
007-01-7206	1461-20B	007-01-7207	1461-20C	20	3.50 (88.9)	3.63 (92.2)	4.00 (101.6)	4.24 (107.7)
007-01-7156	1461-15B	007-01-7157	1461-15C	15	2.62 (66.5)	2.75 (69.9)	3.13 (79.5)	3.37 (85.6)
007-01-7106	1461-10B	007-01-7107	1461-10C	10	1.750 (44.45)	1.875 (47.63)	2.250 (57.15)	2.49 (63.2)
007-01-7056	1461-5B	007-01-7057	1461-5C	5	.875 (22.23)	1.000 (25.40)	1.375 (34.93)	1.615 (41.02)

SPECIAL INK STAMPED HOUSINGS CHART					
BEFORE INK STAMP		AFTER INK STAMP		NO. CKTS.	CIRCUIT NUMERALS
PART NO.	ENG. NO.	PART NO.	ENG. NO.		
007-01-7106	1461-10B	007-01-7108	1461-10-1C	10	11 THRU 20
		007-01-7109	1461-10-2C	10	21 THRU 30
		007-01-7100	1461-10-3C	10	31 THRU 40
007-01-7156	1461-15B	007-01-7158	1461-15-1C	15	16 THRU 30
		007-01-7159	1461-15-2C	15	31 THRU 45
		007-01-7160	1461-15-3C	15	46 THRU 60
007-01-7206	1461-20B	007-01-7208	1461-20-1C	20	21 THRU 40
		007-01-7209	1461-20-2C	20	41 THRU 60
		007-01-7200	1461-20-3C	20	61 THRU 80

DIMENSIONS SHOWN IN PARENTHESES ARE IN MILLIMETERS
 DIMENSIONS SHOWN IN BRACKETS ARE IN INCHES
 DIM. A: .015
 DIM. B: .014
 DIM. C: .015
 DIM. D: .015

REVISIONS: 01 SEE SHEET 1
 LTR. REVISIONS: LTR. REVISIONS

MOLEX INCORPORATED
 SHEET NO. 2 DATE 03/22/91
 SEE CHART SD-1461-#
 TITLE HOUSING, COMMONING [.025/.64 OFFSET]
 PART NO. SD-1461-#
 DATE 03/22/91
 DRAWN BY GWF
 CHECKED BY RHR
 SCALE 4:1
 MOLT METALS COMPANY
 MOLT METALS COMPANY
 MOLT METALS COMPANY