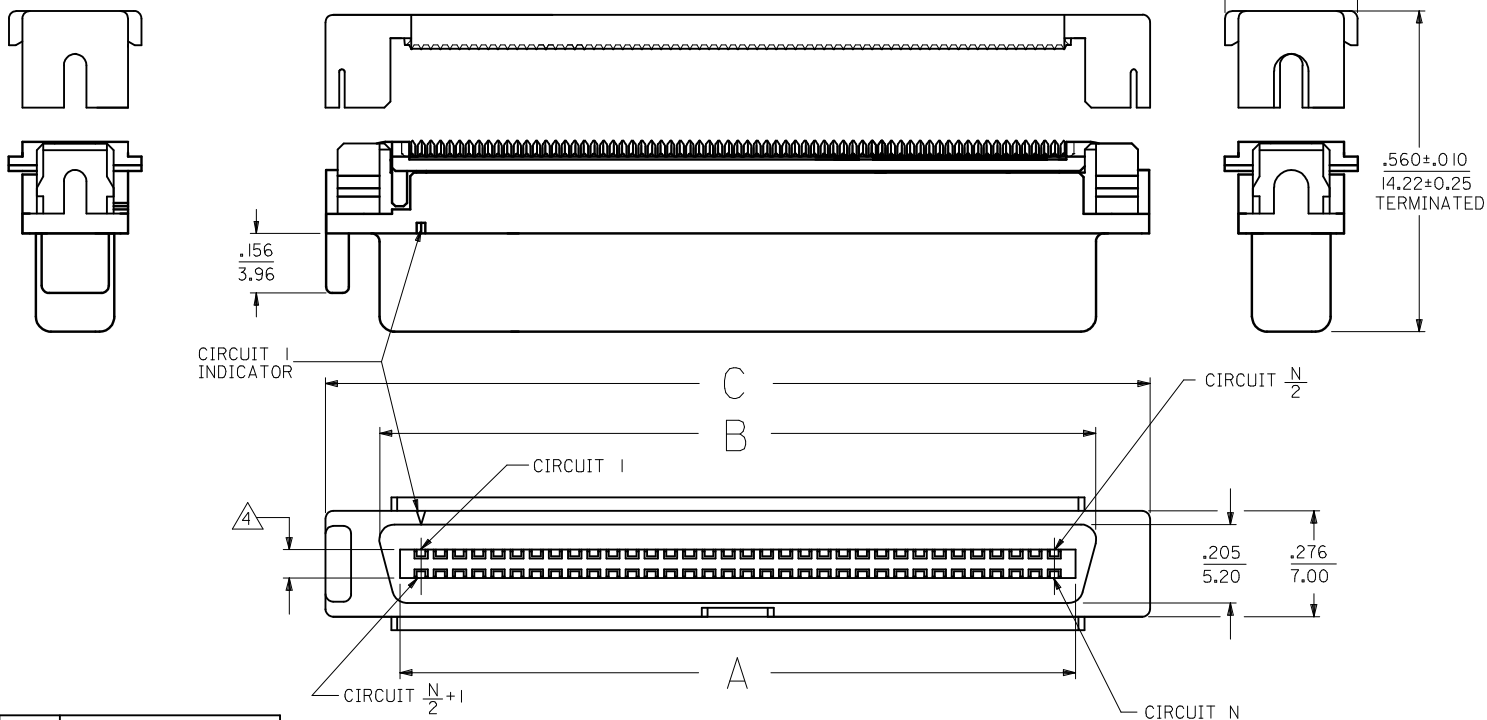


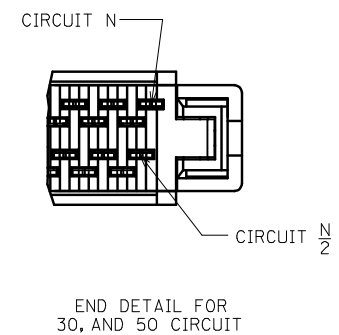
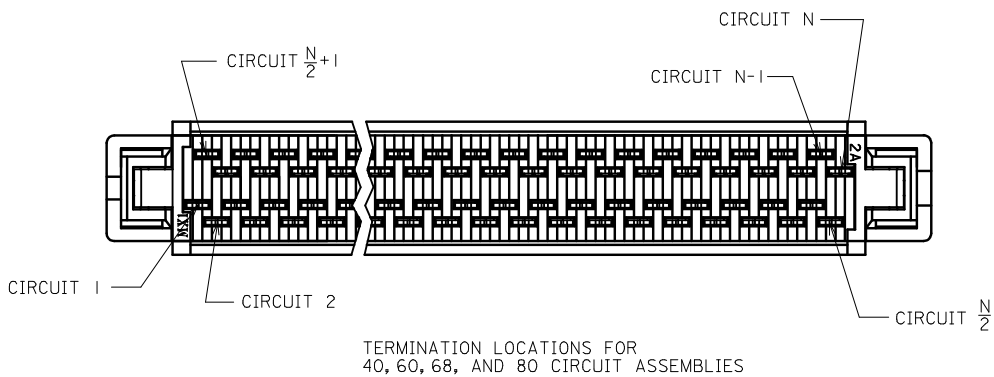
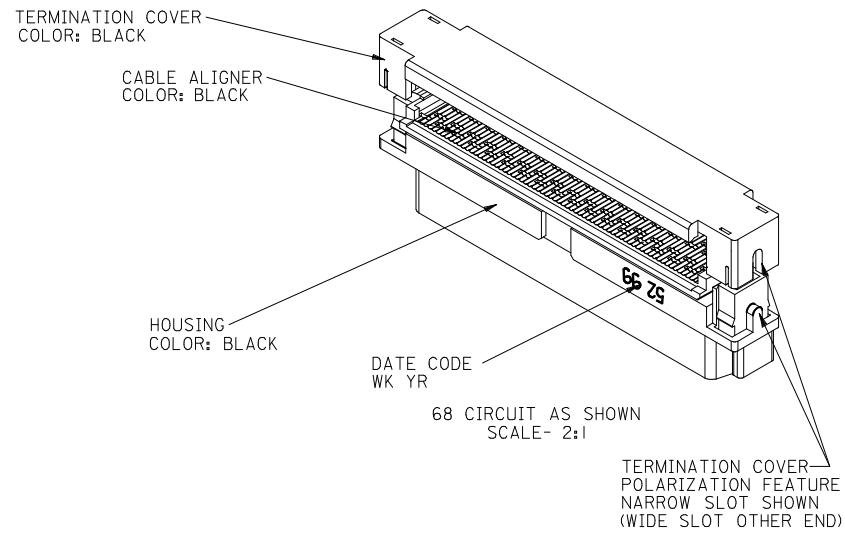
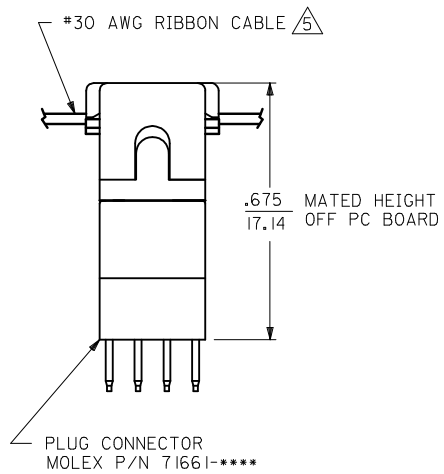
NOTES:

- 1) MATERIALS:  
HOUSING- LCP, GLASS FILLED, 94V-0, BLACK.  
ALIGNER, TERMINATION COVER- POLYESTER, GLASS FILLED, 94V-0, BLACK.  
TERMINALS- PHOSPHOR BRONZE ALLOY.
- 2) FINISH:  
SELECTIVE GOLD IN CONTACT AREA  
THICKNESS = 30 MICROINCHES / 0.763 MICROMETERS  
SELECTIVE TIN IN IDT AREA  
THICKNESS = 50 MICROINCHES / 1.27 MICROMETERS  
NICKEL UNDERPLATE OVERALL.
- 3) PRODUCT SPECIFICATION: PS-71660.
- 4) ASSEMBLY MATES WITH MOLEX P/N 71661-\*\*\*\*.  
CONNECTOR WILL ACCEPT MATING TO A P.C. BOARD WITH  
A THICKNESS OF .062±.003.
- 5) CONNECTOR WILL TERMINATE .025  $\phi$  FLAT RIBBON CABLES OF THE FOLLOWING CONSTRUCTION:  
#30 AWG STRANDED OR SOLID, PVC INSULATION.  
#30 AWG SOLID, FEP INSULATION.
- 6) PRODUCT IS SHIPPED AS A KIT. THE HOUSING/ALIGNER SUB-ASSEMBLY  
IS SHIPPED TRAY PACKED. THE TERMINATION COVER IS INCLUDED IN BULK PACKAGING.  
PER PACKAGING SPECIFICATION PK 70873-0403.
- 7) APPLICATION TOOLING: SEE APPLICATION SPECIFICATION AS-71662-000.

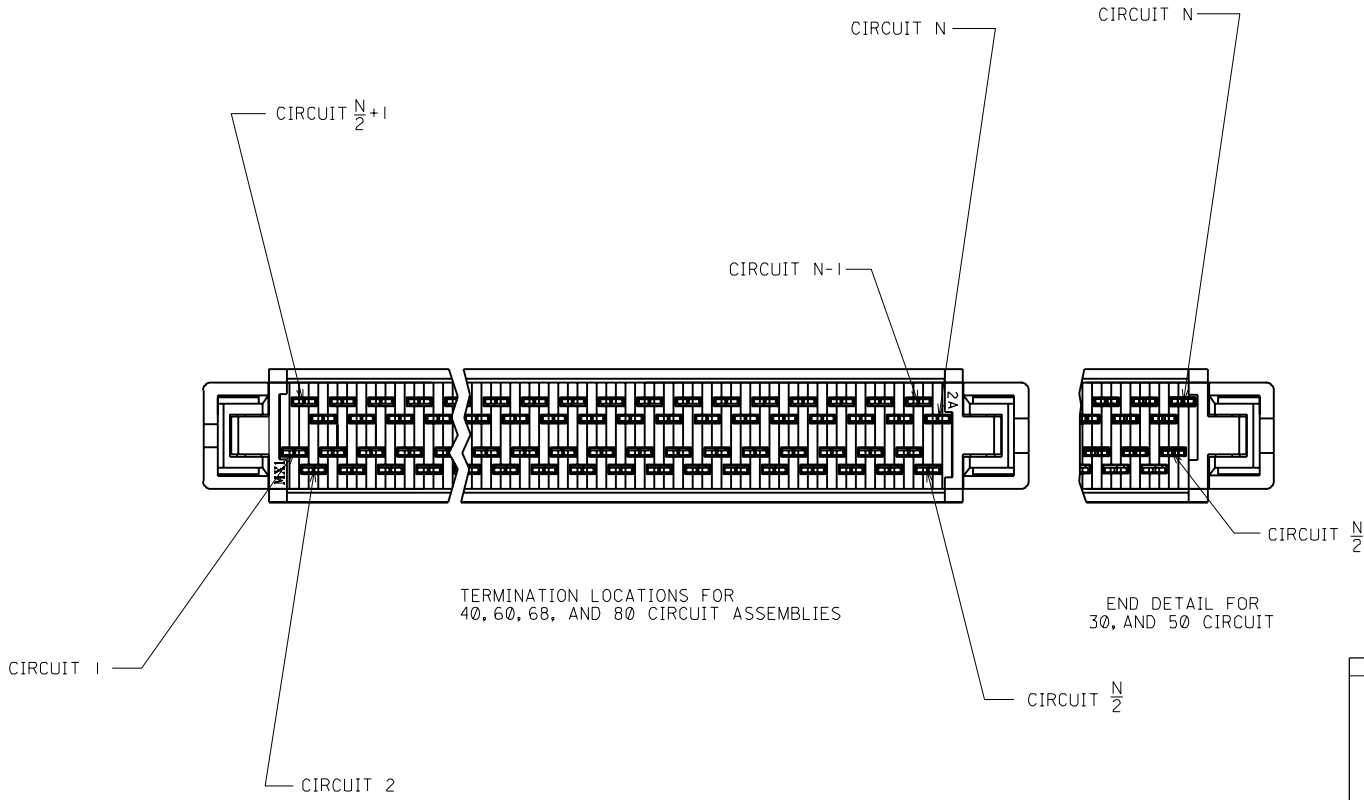
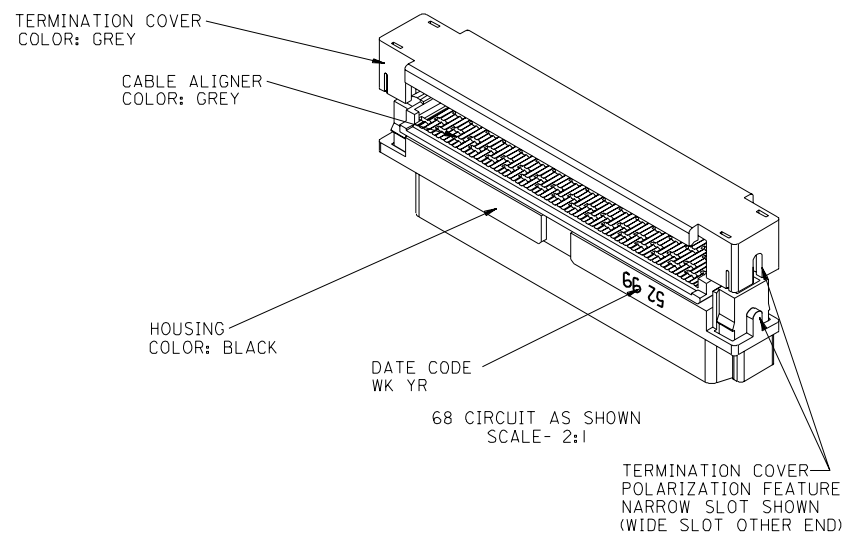
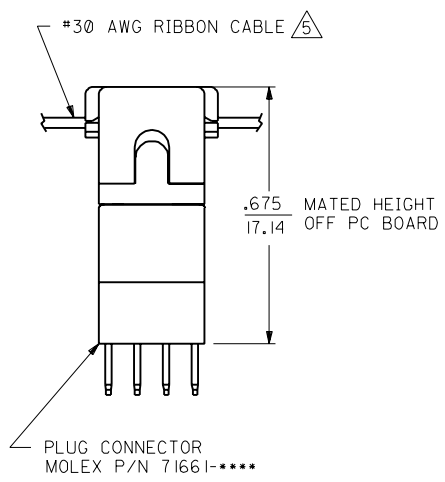


2.445 (62.10)	2.166 (55.02)	2.025 (51.43)	80	71660-3580
2.145 (54.48)	1.866 (47.40)	1.725 (43.81)	68	71660-3568
1.945 (49.40)	1.666 (42.32)	1.525 (38.74)	60	71660-3560
1.695 (43.05)	1.416 (35.97)	1.275 (32.38)	50	71660-3550
1.445 (36.70)	1.166 (29.62)	1.025 (26.04)	40	71660-3540
1.195 (30.35)	.916 (23.27)	.775 (19.68)	30	71660-3530
C	B	A	CKT "N"	MATERIAL NUMBER

REV	DESCRIPTION	QUALITY SYMBOLS	GENERAL TOLERANCES (UNLESS SPECIFIED)		DIMENSION STYLE		SCALE	DESIGN UNITS	THIRD ANGLE PROJECTION
			mm	INCH	IN/MM				
			4 PLACES ± ---	± ---	DRAWN BY	DATE	TITLE	<b>SALES ASSEMBLY</b> <b>EBBI IDT RECEPTACLE</b>  <b>molex</b> DOCUMENT NO. <b>SDA-71660-35**</b> SHEET NO. <b>1 OF 2</b>	
			3 PLACES ± ---	± .005	CHECKED BY	DATE			
			2 PLACES ± 0.13	± .010	DMORGAN	2015/10/07			
			1 PLACE ± 0.25	± ---	APPROVED BY	DATE			
			0 PLACE ± ---	± ---	SMILLER	2015/10/16			
			ANGULAR ±1/2°		MATERIAL NO.				
			DRAFT WHERE APPLICABLE MUST REMAIN WITHIN DIMENSIONS		SEE TABLE				



SEE SHEET 1 EC NO: UCP2016-1505 DRWN:BBARKER 2015/10/07 CHKD:DMORGAN APPR:SMILLER 2015/10/16	QUALITY SYMBOLS $\nabla = 0$ $\nabla = 0$ $\nabla = 0$	GENERAL TOLERANCES (UNLESS SPECIFIED) <table border="1"> <thead> <tr> <th></th> <th>mm</th> <th>INCH</th> </tr> </thead> <tbody> <tr> <td>4 PLACES</td> <td><math>\pm .005</math></td> <td><math>\pm .0005</math></td> </tr> <tr> <td>3 PLACES</td> <td><math>\pm .005</math></td> <td><math>\pm .0005</math></td> </tr> <tr> <td>2 PLACES</td> <td><math>\pm 0.13</math></td> <td><math>\pm .010</math></td> </tr> <tr> <td>1 PLACE</td> <td><math>\pm 0.25</math></td> <td><math>\pm .010</math></td> </tr> <tr> <td>0 PLACE</td> <td><math>\pm .005</math></td> <td><math>\pm .0005</math></td> </tr> </tbody> </table>		mm	INCH	4 PLACES	$\pm .005$	$\pm .0005$	3 PLACES	$\pm .005$	$\pm .0005$	2 PLACES	$\pm 0.13$	$\pm .010$	1 PLACE	$\pm 0.25$	$\pm .010$	0 PLACE	$\pm .005$	$\pm .0005$	DIMENSION STYLE IN/MM	SCALE 4:1	DESIGN UNITS INCH	THIRD ANGLE PROJECTION
		mm	INCH																					
	4 PLACES	$\pm .005$	$\pm .0005$																					
	3 PLACES	$\pm .005$	$\pm .0005$																					
2 PLACES	$\pm 0.13$	$\pm .010$																						
1 PLACE	$\pm 0.25$	$\pm .010$																						
0 PLACE	$\pm .005$	$\pm .0005$																						
		ANGULAR $\pm 1/2^\circ$	DRAWN BY BBARKER	DATE 2015/10/07	TITLE SALES ASSEMBLY EBBI IDT RECEPTACLE																			
		DRAFT WHERE APPLICABLE MUST REMAIN WITHIN DIMENSIONS	CHECKED BY DMORGAN	DATE 2015/10/07	DOCUMENT NO. SDA-71660-35**																			
			APPROVED BY SMILLER	DATE 2015/10/16	SHEET NO. 2 OF 2																			
THIS DRAWING CONTAINS INFORMATION THAT IS PROPRIETARY TO MOLEX INCORPORATED AND SHOULD NOT BE USED WITHOUT WRITTEN PERMISSION																								



71660

A	SEE SHEET 1		
MFG. SH.	REV.	LTR.	REVISIONS
	= 6		REVISE ONLY ON CAD SYSTEM

DIMENSIONS SHOWN (METRIC) INCH		UNLESS OTHERWISE SPECIFIED TOLERANCES ANGULAR $\pm 1/2^\circ$	
3 PLACE	$\pm .005$	---	---
2 PLACE	$\pm .01$	$\pm 0.13$	
1 PLACE	---	$\pm 0.25$	
DRAFT WHERE APPLICABLE MUST REMAIN WITHIN DIMENSIONS			
DRWG. BY: DGA	CHK'D. BY: DGA	TITLE: SALES ASSEMBLY EBBI VERTICAL IDT RECEPTACLE FOR PVC AND FEP RIBBON CA	
APP'D. BY: MGB	SCALE: 4: 1	FROM: MOLEX INCORPORATED L15LE,ILL. 60532 U.S.A.	SHEET NO. DATE: 2 00/02/22
SEE TABLE		PART NO. DRWG. NO. SDA-71660-35	
THIS DRAWING CONTAINS INFORMATION THAT IS PROPRIETARY TO MOLEX INC. AND SHOULD NOT BE USED WITHOUT WRITTEN PERMISSION.		FILE NAME	DIV. SIZE: C C