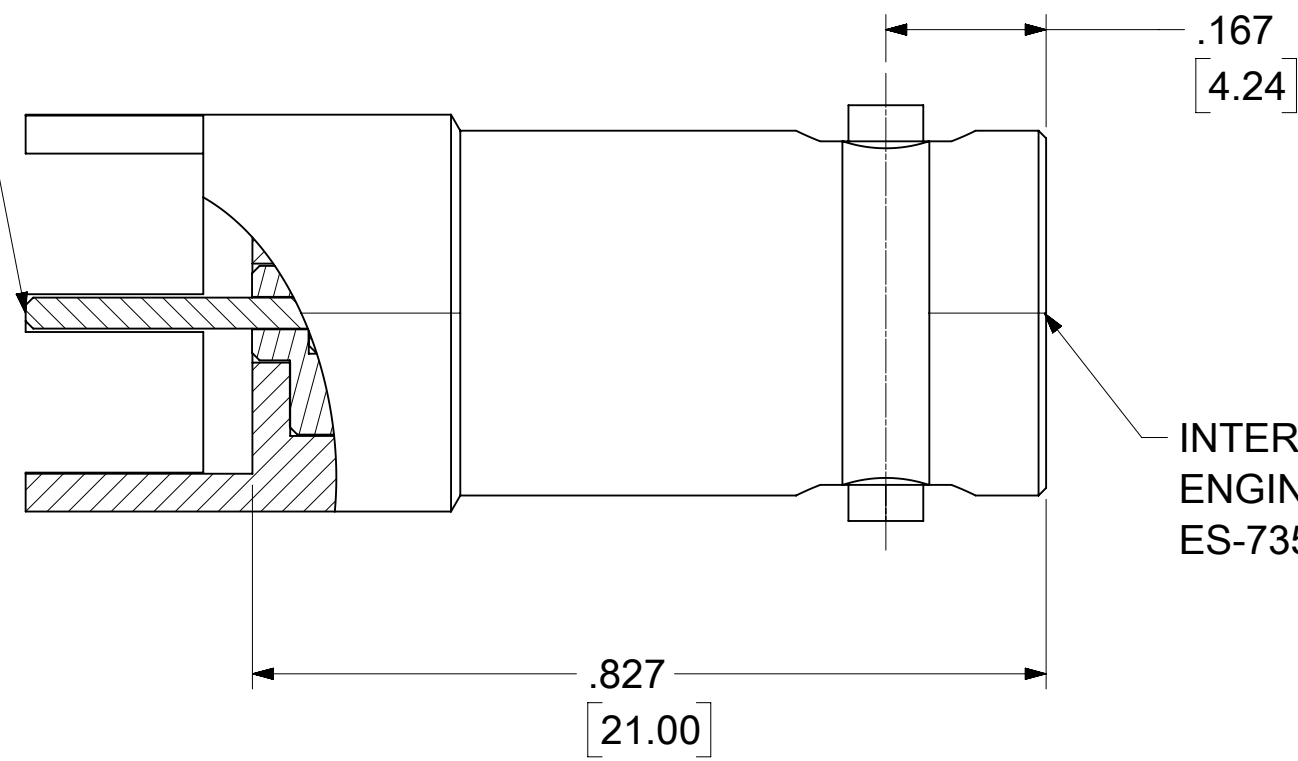


THE TIP OF CENTER CONTACT  
FLUSH TO THE LEG'S TIP  
WHIN ±0.5



**CONSTRUCTION:**

BODY ----- BRASS  
CENTER CONTACT -- PHOSPHOR BRONZE  
INSULATOR ----- TEFLON

**FINISH:**

BODY ----- NICKEL PLATING  
CENTER CONTACT -- GOLD PLATING (1 ~ 3u")

**MECHANICAL & ELECTRICAL CHARACTERISTICS:**

WORKING VOLTAGE : 500V RMS MAX. AT SEA LEVEL  
NORMAIL IMPEDANCE : 50 OHMS  
FREQUENCY RANGE : 0-2 GHz  
VSWR : 1.18 Max. @ 2 GHz  
INSERTION LOSS : 0.15dB @ 2 GHz  
TEMPERANCE RANGE : -20°C TO +85°C

**PACKAGE:**

BULK PACK WITH PLASTIC BAG

PS-89675-103	PRODUCT SPECIFICATION
SPECIFICATION	DESCRIPTION

A1	2020/03/06	ADDED VSWR AND IL PER EWR # 13589-A
A	1994/01/21	NEW RELEASE
REV.	DATE	DESCRIPTION

THIS DRAWING CONTAINS INFORMATION THAT IS PROPRIETARY TO MOLEX ELECTRONIC TECHNOLOGIES, LLC AND SHOULD NOT BE USED WITHOUT WRITTEN PERMISSION									
FUNCTIONAL SYMBOLS	DIMENSION UNITS	SCALE	CURRENT REV DESC:						
$\frac{E}{A} = 0$	HYBRID	NTS	EC NO: 635049 DRWN: ELIN CHK'D: YCHENG APPR: YCHENG INITIAL REVISION: DRWN: ELIN APPR: GHUBBARD						
$\frac{E}{C} = 0$	GENERAL TOLERANCES (UNLESS SPECIFIED)								
$\frac{E}{P} = 0$	ANGULAR TOL ± 0.5°								
DIVISIONAL SYMBOLS	4 PLACES ±	3 PLACES ±	2020/03/06	50 OHM VERTICAL BNC, EWR # 13589					
	2 PLACES ±	1 PLACE ±	2020/04/01	PRODUCT CUSTOMER DRAWING					
	0 PLACES ±		2020/04/01	DOCUMENT NUMBER					
	DRAFT WHERE APPLICABLE MUST REMAIN WITHIN DIMENSIONS		THIRD ANGLE PROJECTION	DRAWING	SERIES	MATERIAL NUMBER		CUSTOMER	SHEET NUMBER
				C-SIZE	73100	XSDA-73100-0133		GENERAL MARKET	1 OF 1