

MATERIALS AND FINISHES:

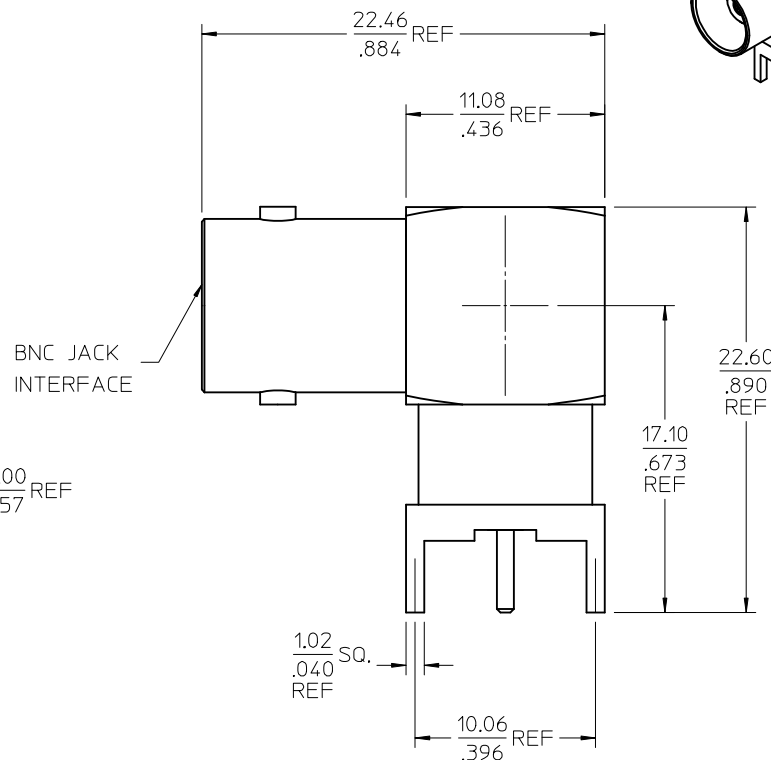
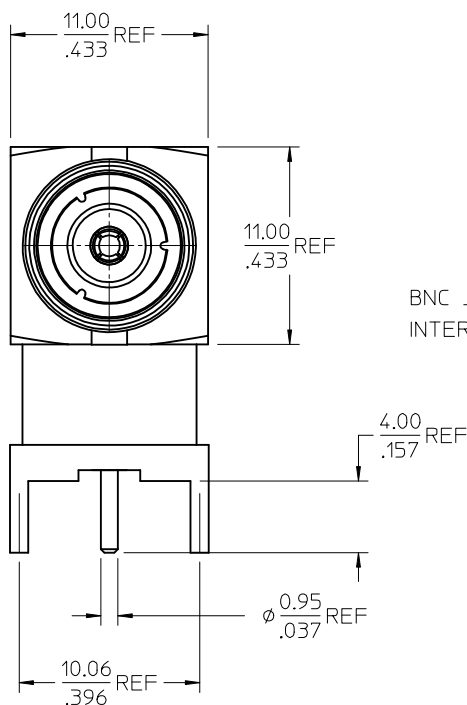
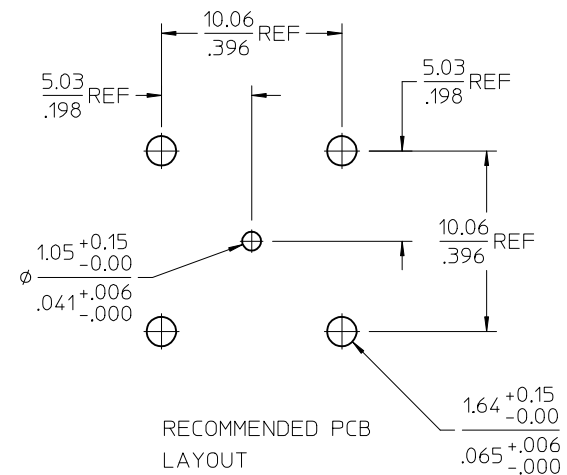
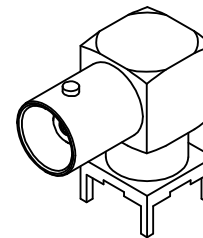
BODY, RETAINING RING BRASS  
PLATED NICKEL

CENTER CONTACT BRASS OR PHOSPHOR BRONZE  
PLATED GOLD

INSULATOR TEFLON

HOUSING BRASS  
FINISH TIN/LEAD

PACKAGING: BY TRAY



PART # 73131-0240

PS-73598-0050	ELECTRO/MECH PERF
MIL-STD-348A, FIG. 201.2	INTERFACE
SPECIFICATION	DESCRIPTION

CHG: ADDED PKG PER RF15-E286 EC NO: URF2016-0101 DRW: CWE102 2015/08/14 CHKD: APPR: YCHENG 2015/08/19 DESCRIPTION REV: A2	QUALITY SYMBOLS	GENERAL TOLERANCES (UNLESS SPECIFIED)	DIMENSION STYLE	SCALE	DESIGN UNITS	THIRD ANGLE PROJECTION
	▽=0	mm INCH	MM/IN	DATE	METRIC	
	▽=0	4 PLACES ± --- ± ---	DRAWN BY	2000	TITLE	
	▽=0	3 PLACES ± --- ± ---	LYNN LIN	DATE	BNC JACK, R/A, PCB	
	2 PLACES ± --- ± ---	CHECKED BY	DATE	50 OHMS, BNC-J/RA/PCB		
	1 PLACE ± --- ± ---	APPROVED BY	DATE			
	0 PLACE ± --- ± ---					
	ANGULAR ± 2 °	MATERIAL NO.	731310240	DOCUMENT NO.	SD-73131-024	SHEET NO.
	DRAFT WHERE APPLICABLE MUST REMAIN WITHIN DIMENSIONS	SIZE	C	THIS DRAWING CONTAINS INFORMATION THAT IS PROPRIETARY TO MOLEX INCORPORATED AND SHOULD NOT BE USED WITHOUT WRITTEN PERMISSION		