

MATERIALS AND FINISHES:

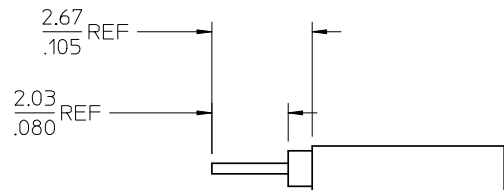
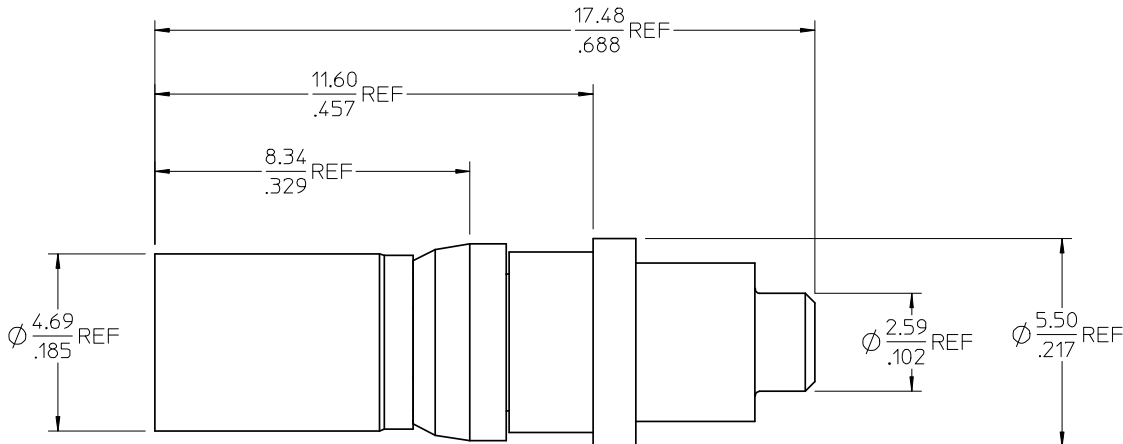
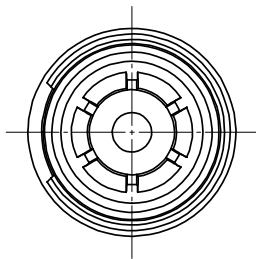
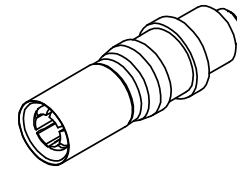
BODY BRASS
PLATED GOLD

CENTER CONTACT BRASS
PLATED GOLD

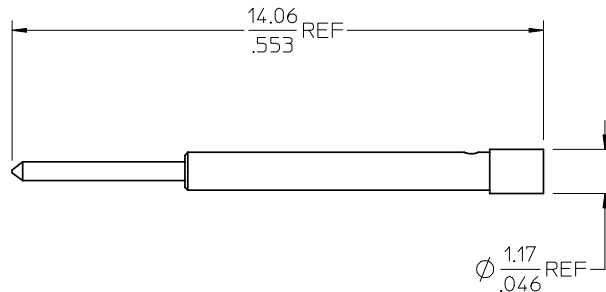
INSULATOR TEFLON

RETAINING CLIP BeCu
PLATED NICKEL

OUTER CONTACT BeCu
PLATED GOLD



RECOMMENDED STRIPPING DIMENSION



PART # 73174-0400

DIN 41626	INTERFACE
SPECIFICATION	DESCRIPTION

CHG: NEW RELEASE	
EC NO: URF2008-0652	2008/06/19
DRW:SSHAH	2008/06/19
CHKD:ROBERTSON	2008/06/19
APPR:WIENER	2008/06/19
REV	DESCRIPTION
A	

QUALITY SYMBOLS	▽=0
	▽=0

GENERAL TOLERANCES (UNLESS SPECIFIED)	mm	INCH
4 PLACES	± .005	± .0004
3 PLACES	± .002	± .0001
2 PLACES	± .001	± .00005
1 PLACE	± .0005	± .00002
ANGULAR ± 2 °		
DRAFT WHERE APPLICABLE MUST REMAIN WITHIN DIMENSIONS		

DIMENSION STYLE		MM/IN
DRAWN BY	DATE	
SSS	2004/01/20	
CHECKED BY	DATE	
TEF	2004/01/20	
APPROVED BY	DATE	
GMH	2004/01/20	
MATERIAL NO.	731740400	
SIZE	C	

SCALE	DESIGN UNITS	THIRD ANGLE PROJECTION
	METRIC	
TITLE		
DIN 41626 JACK, STR		
50 OHMS, SR .047		
EWR-2295 1.0/2.3-JC		
MOLEX INCORPORATED		SHEET NO.
DOCUMENT NO.		1 OF 1
THIS DRAWING CONTAINS INFORMATION THAT IS PROPRIETARY TO MOLEX INCORPORATED AND SHOULD NOT BE USED WITHOUT WRITTEN PERMISSION		