

MATERIALS AND FINISHES

BODY, CAP SEE TABLE
PLATED GOLD

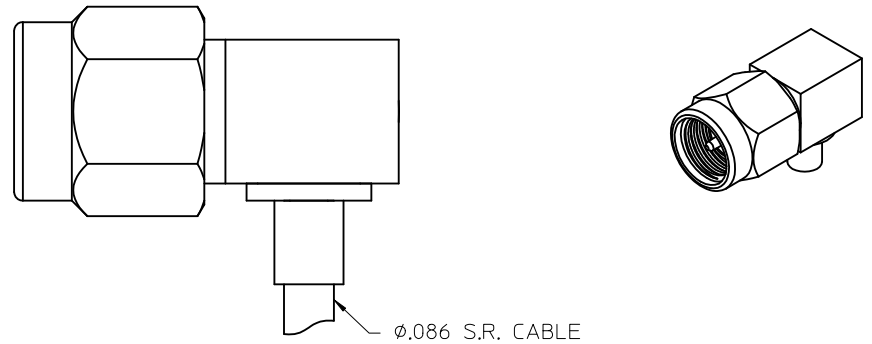
COUPLING NUT SEE TABLE
PLATED GOLD

CENTER CONTACT SEE TABLE
PLATED GOLD

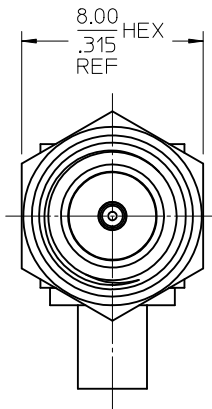
INSULATOR TEFLON

RETAINING RING BERYLLIUM COPPER

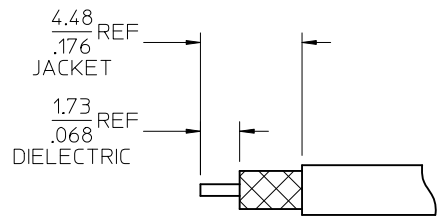
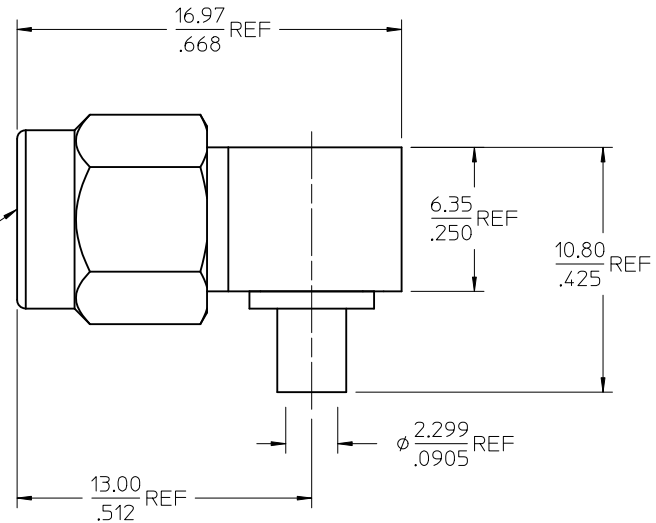
GASKET SILICONE RUBBER



∅.086 S.R. CABLE



SMA PLUG
INTERFACE



RECOMMENDED STRIPPING DIMENSIONS
RG405 WITH JACKET SHOWN

73251-0654	BRASS	BRASS	BRASS	BRASS	BULK
73251-0653	BRASS	BRASS	BRASS	BRASS	SINGLE BAG
73251-0652	STAINLESS STEEL	BERYLLIUM COPPER	STAINLESS STEEL	STAINLESS STEEL	BULK
73251-0651	BRASS	BRASS	BRASS	BRASS	BULK
73251-0650	BRASS	BRASS	STAINLESS STEEL	BRASS	BULK
PART NO.	BODY	CONTACT	COUPLING NUT	CAP	PACKAGING

CHG: UPDATE VIEW	EC NO: URF2013-0460 DRWN: JWIENER 2013/02/08 CHKD: SSS 2013/02/08 APPR: JWIENER 2013/02/11	QUALITY SYMBOLS ∇=0 ∇=0 ∇=0	GENERAL TOLERANCES (UNLESS SPECIFIED)		DIMENSION STYLE	SCALE	DESIGN UNITS	THIRD ANGLE PROJECTION
			mm	INCH	MM/IN	INCH	INCH	DRAWN BY DATE TEF 2002/04/01 CHECKED BY DATE SSS 2002/04/01 APPROVED BY DATE GMH 2002/04/01
A5			ANGULAR ± 2 °		MATERIAL NO.	DOCUMENT NO.	SHEET NO.	
			DRAFT WHERE APPLICABLE MUST REMAIN WITHIN DIMENSIONS		SEE TABLE	SD-73251-065	1 OF 1	
THIS DRAWING CONTAINS INFORMATION THAT IS PROPRIETARY TO MOLEX INCORPORATED AND SHOULD NOT BE USED WITHOUT WRITTEN PERMISSION								