

MATERIALS AND FINISHES

BODY: BRASS
 PLATED: NICKEL

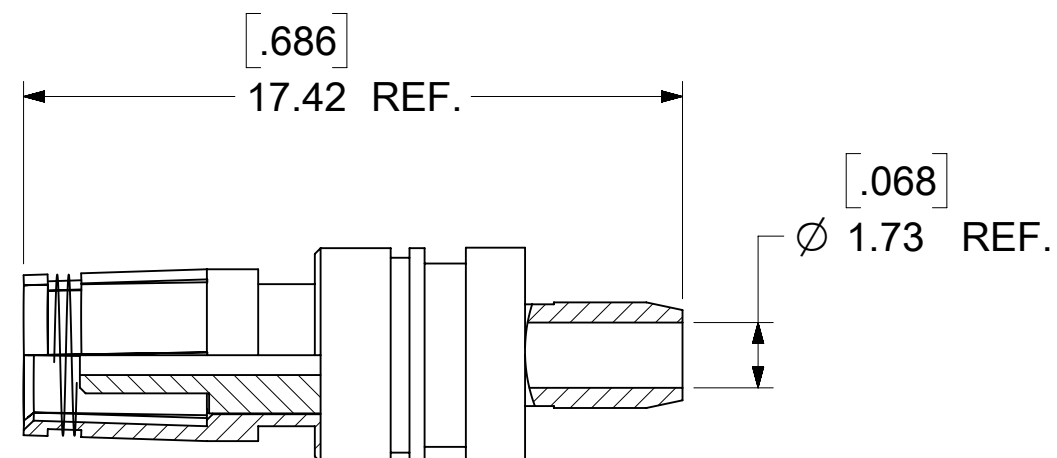
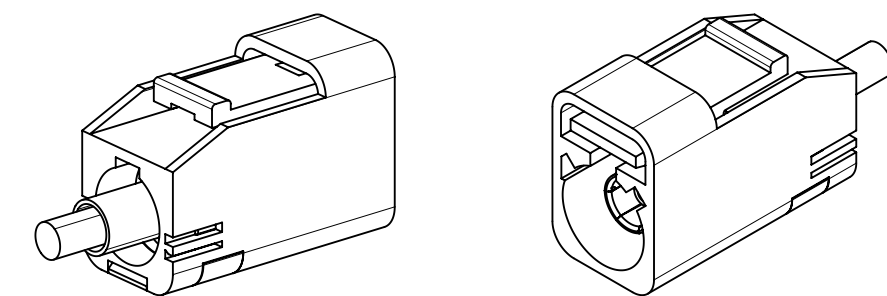
CENTER CONTACT: PHOSPOR BRONZE
 PLATED: GOLD

CRIMP TUBE: BRASS
 PLATED: NICKEL

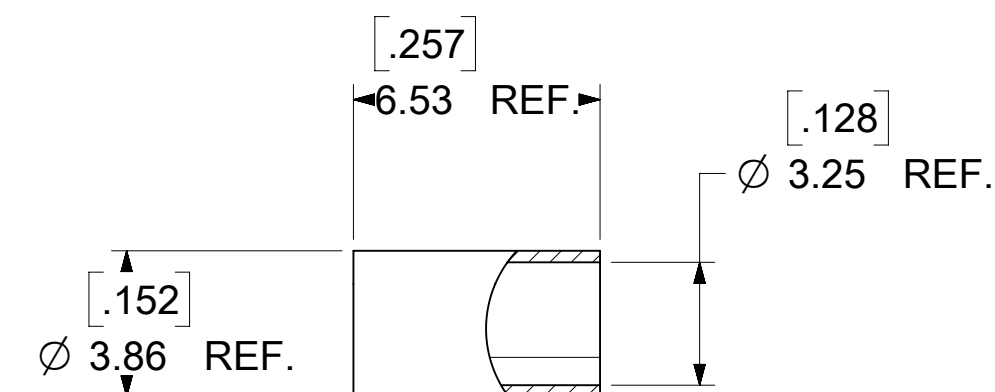
OUTER CASING: NYLON 66 OR EQUIVALENT
 KEYING: SEE TABLE
 COLOR: SEE TABLE

INSULATOR: PP

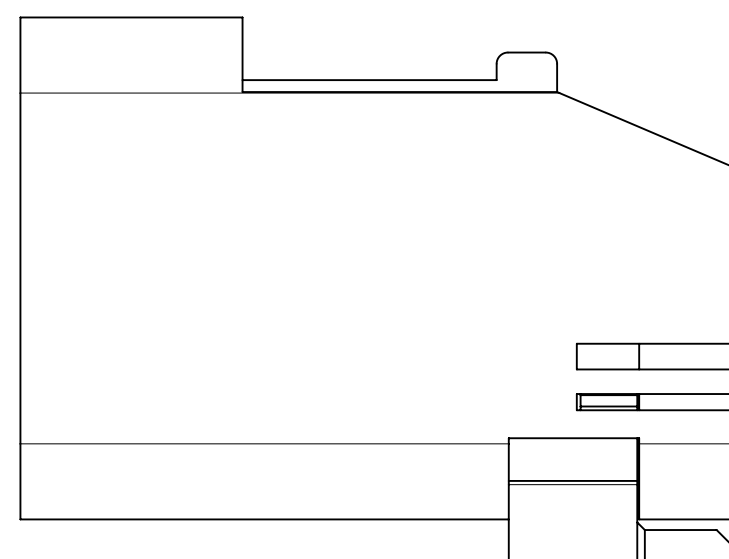
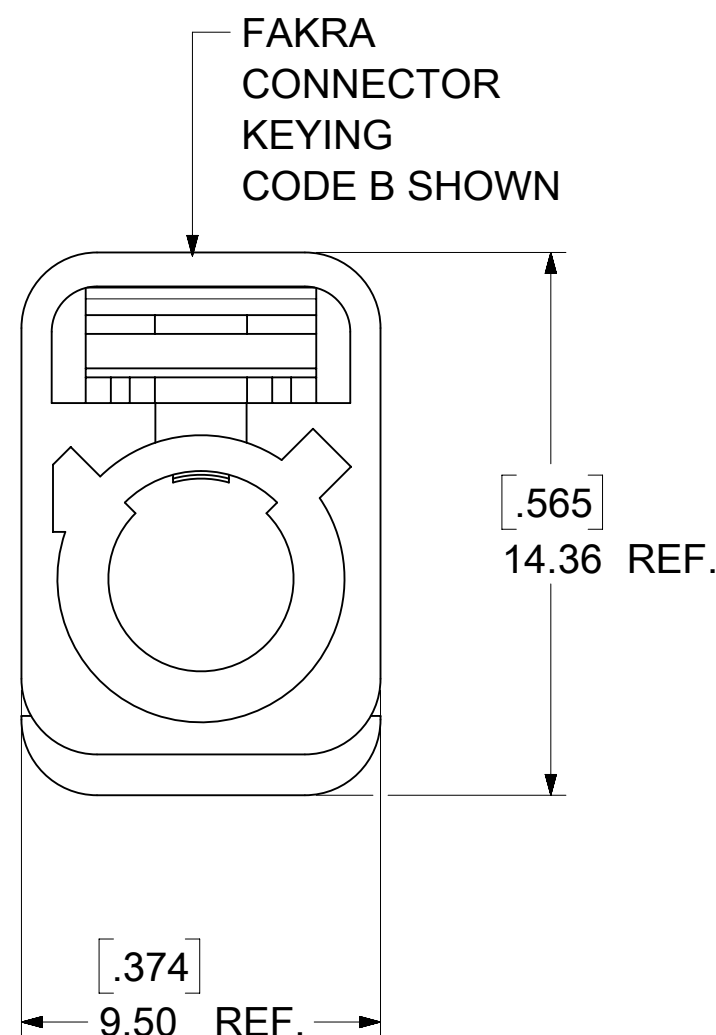
PACKAGING BY SINGLE BAG



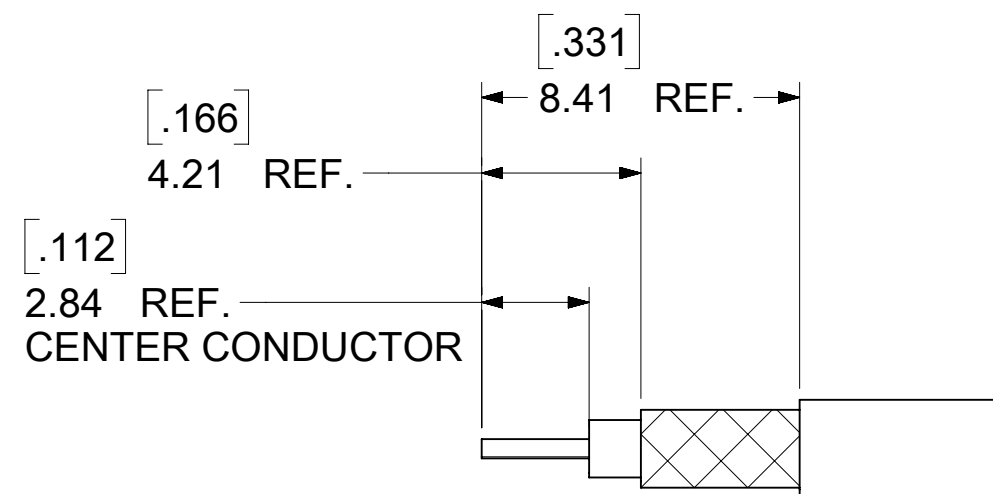
CENTER CONTACT
 PART NO.: 89538-0781



CRIMP TUBE
 PART NO.: 89613-1792



SECONDARY LOCK
 (TPA)



RECOMMENDED CABLE STRIP DIM.

AS-73597-045	ASSEMBLY INSTYUCTION
PS-89675-331	PRODUCT SPECIFICATION
DIN 72594-1	INTERFACE SPECIFICATION
SPECIFICATION	DESCRIPTION

2018/04/16	A2	REMOVE TITLE II PER 173731
2013/09/10	A1	TYPO
DATE	REV.	DESCRIPTION

SYMBOLS ▽ = 0 ▽ = 0 ▽ = 0 ▽ = 0 ▽ = 0 ▽ = 0 ▽ = 0 ▽ = 0 ▽ = 0 ▽ = 0	THIS DRAWING CONTAINS INFORMATION THAT IS PROPRIETARY TO MOLEX ELECTRONIC TECHNOLOGIES, LLC AND SHOULD NOT BE USED WITHOUT WRITTEN PERMISSION		DIMENSION UNITS: HYBRID SCALE: NTS		CURRENT REV DESC:			
	GENERAL TOLERANCES (UNLESS SPECIFIED) ANGULAR TOL ± 2.0°		EC NO: 173731 DRWN: ELIN 2018/04/12 CHK'D: YCHENG 2018/05/03 APPR: YCHENG 2018/05/03		SMB PLUG FAKRA STR. 50 OHMS FOR RG316 FAKRA -PC			
	DRAFT WHERE APPLICABLE MUST REMAIN WITHIN DIMENSIONS		THIRD ANGLE PROJECTION		DRAWING: C-SIZE SERIES: 73403		PRODUCT CUSTOMER DRAWING	
	DOCUMENT NUMBER: SD-73403-626		DOC TYPE: PSD DOC PART: 001 REVISION: A2		MATERIAL NUMBER: SEE SHEET 2 CUSTOMER: GENERAL MARKET SHEET NUMBER: 1 OF 3			

MATERIALS AND FINISHES

BODY: BRASS
PLATED: NICKEL

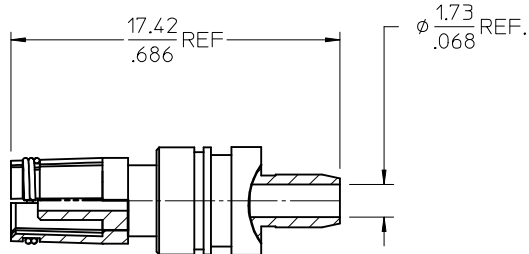
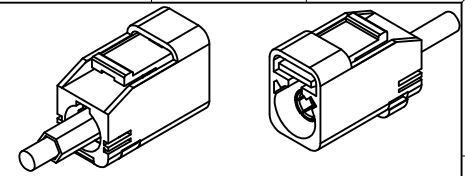
CENTER CONTACT: PHOSPOR BRONZE
PLATED: GOLD

CRIMP TUBE: BRASS
PLATED: NICKEL

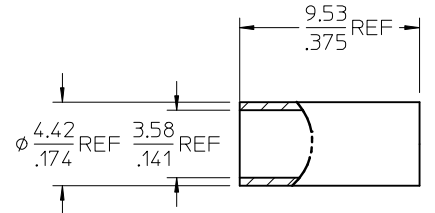
OUTER CASING: NYLON 66 OR EQUIVALENT
KEYING: SEE TABLE
COLOR: SEE TABLE

INSULATOR: PP

PACKAGING BY POLYBAG M00 1K

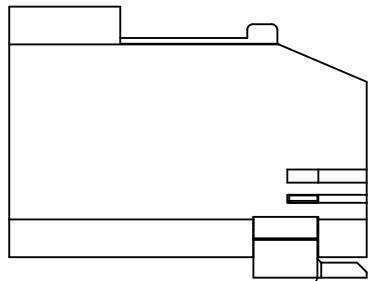
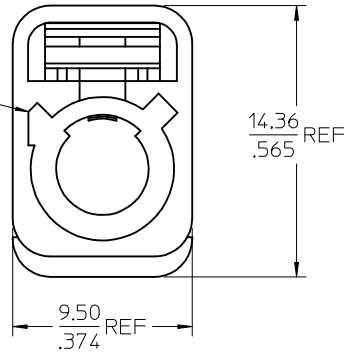


CENTER CONTACT
PART NO.: 89538-0781

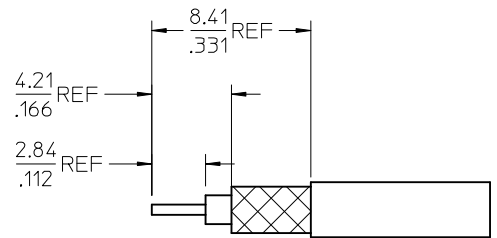


CRIMP TUBE
PART NO.: 89684-9012

FAKRA
CONNECTOR
KEYING
CODE B SHOWN



SECONDARY LOCK
(TPA)

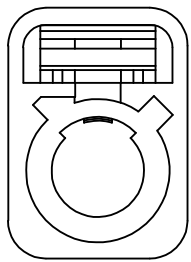


PART # SEE SHEET 2

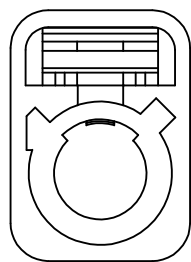
AS-73597-045	ASSYMBLY INSTRUCTIONS
PS-89675-331	PRODUCT SPECIFICATION
DIN 72594-1	INTERFACE SPECIFICATION
SPECIFICATION	DESCRIPTION

CHG NEW RELEASE PDR: 2017/05/23 ECN: 017-0393 DRAWN: YCHENG 2017/05/19 CHKD: APPR: YCHENG 2017/05/24	DESCRIPTION REV	QUALITY SYMBOLS	GENERAL TOLERANCES (UNLESS SPECIFIED)	DIMENSION STYLE	SCALE	DESIGN UNITS	THIRD ANGLE PROJECTION	
		$\nabla = 0$ $\nabla = 0$ $\nabla = 0$	mm INCH 4 PLACES ± --- ± --- 3 PLACES ± --- ± --- 2 PLACES ± --- ± --- 1 PLACE ± --- ± --- 0 PLACE ± --- ± ---	MM/IN	5:1	METRIC	TITLE SMB PLUG FAKRA II STR. FOR RD316 500HM	
			ANGULAR ± 2°				molex	
			DRAFT WHERE APPLICABLE MUST REMAIN WITHIN DIMENSIONS				MATERIAL NO. SEE SHEET 2	DOCUMENT NO. SD-73403-781

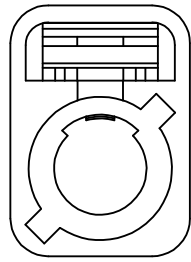
THIS DRAWING CONTAINS INFORMATION THAT IS PROPRIETARY TO MOLEX INCORPORATED AND SHOULD NOT BE USED WITHOUT WRITTEN PERMISSION



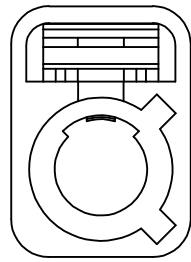
CODE A



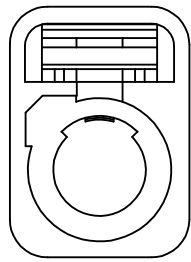
CODE B



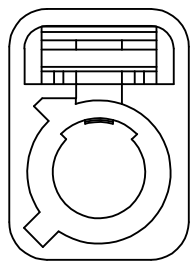
CODE C



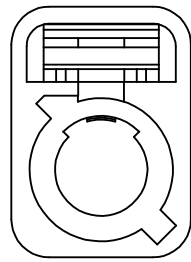
CODE D



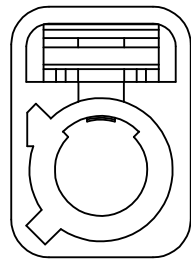
CODE E



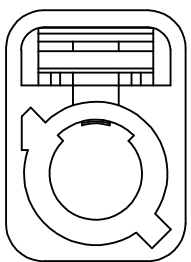
CODE F



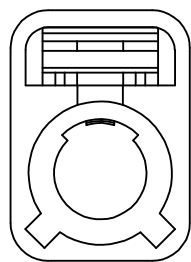
CODE G



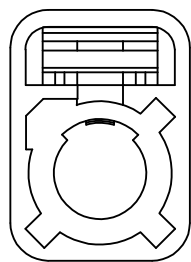
CODE H



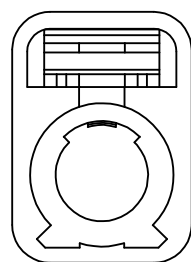
CODE I



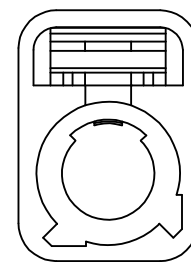
CODE K



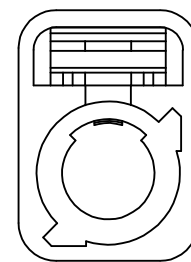
CODE Z



CODE L



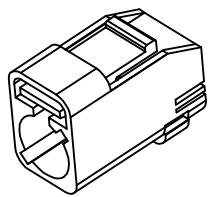
CODE M



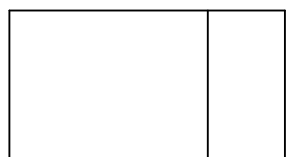
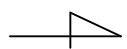
CODE N

N	PASTEL GREEN	73403-7823
M	PASTEL ORANGE	73403-7822
L	CARMINE RED	73403-7821
Z	WATER BLUE	73403-7820
K	CURRY YELLOW	73403-7819
I	BEIGE	73403-7818
H	VIOLET	73403-7817
G	GRAY	73403-7816
F	BROWN	73403-7815
E	GREEN	73403-7814
D	BORDEAUXVIOLET	73403-7813
C	BLUE	73403-7812
B	CREAM WHITE	73403-7811
A	BLACK	73403-7810
KEYING CODE	COLOR	PART NO.

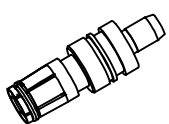
SEE SHEET 1 EC NO: URF2017-0393 DRAWN: YCHENG 2017/05/19 CHKD: APPR: YCHENG 2017/05/24 REV:	QUALITY SYMBOLS	GENERAL TOLERANCES (UNLESS SPECIFIED)	DIMENSION STYLE	SCALE	DESIGN UNITS	THIRD ANGLE PROJECTION
	▽=0	mm INCH	MM/IN	5:1	METRIC	
	▽=0	4 PLACES ± --- ± ---	DRAWN BY DATE	TITLE		
	▽=0	3 PLACES ± --- ± ---	YCHENG 2017/05/16	SMB PLUG FAKRA II STR. FOR RD316 500HM		
	2 PLACES ± --- ± ---	CHECKED BY DATE	APPROVED BY DATE			
	1 PLACE ± --- ± ---		YCHENG 2017/05/24			
	0 PLACE ± --- ± ---		MATERIAL NO.		DOCUMENT NO.	
	ANGULAR ± 2°	DRAFT WHERE APPLICABLE MUST REMAIN WITHIN DIMENSIONS	SEE TABLE		SD-73403-781	
			SIZE C		SHEET NO. 2 OF 3	
			THIS DRAWING CONTAINS INFORMATION THAT IS PROPRIETARY TO MOLEX INCORPORATED AND SHOULD NOT BE USED WITHOUT WRITTEN PERMISSION			



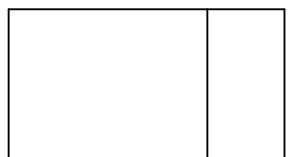
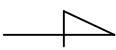
P/N:89618-373X



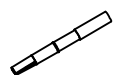
250 PCS SET PER BAG



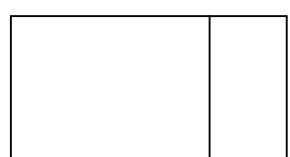
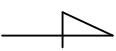
P/N:89618-350X



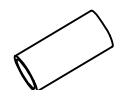
250 PCS SET PER BAG



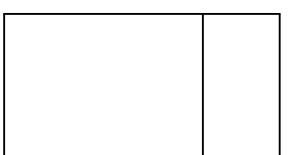
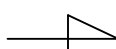
P/N:89538-0781



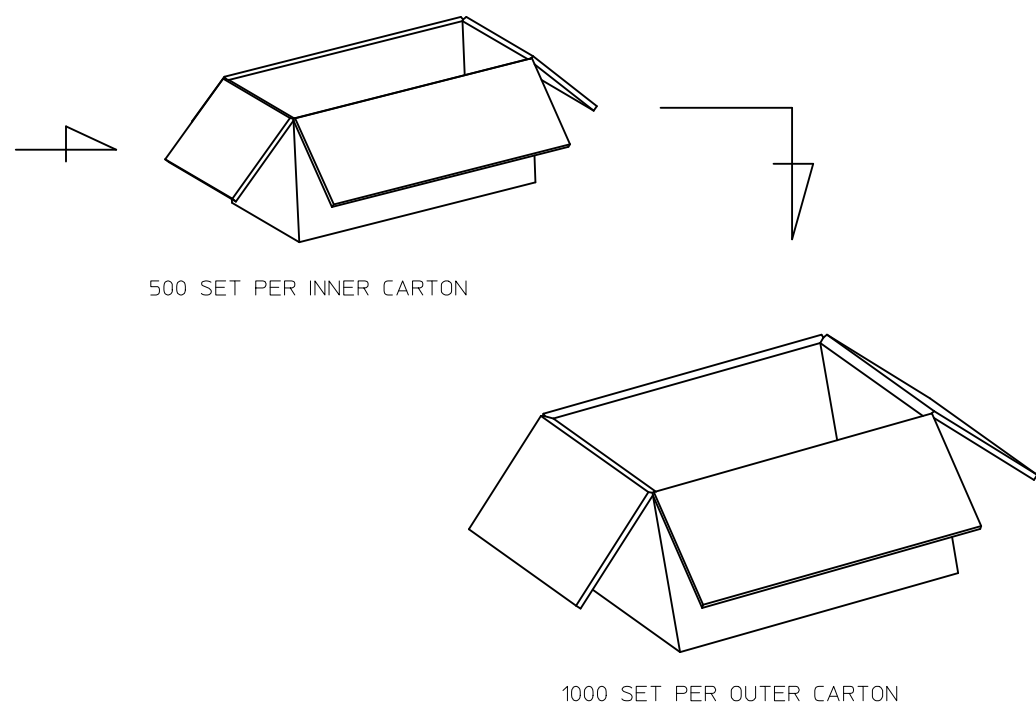
250 PCS SET PER BAG



P/N:89684-9012



250 PCS SET PER BAG



CHG:SEE SHEET 1 EC NO: URF2017-0393 DRAWN:YCHENG 2017/05/19 CHKD: APPR:YCHENG	QUALITY SYMBOLS	GENERAL TOLERANCES (UNLESS SPECIFIED)		DIMENSION STYLE	SCALE	DESIGN UNITS	THIRD ANGLE PROJECTION
		mm	INCH	MM/IN	2.5:1	METRIC	
		4 PLACES ± --- ± ---		DRAWN BY	DATE	TITLE	
		3 PLACES ± --- ± ---		YCHENG	2017/05/16	SMB PLUG FAKRA II STR. FOR RD316 500HM	
	2 PLACES ± --- ± ---		CHECKED BY	DATE	APPROVED BY YCHENG 2017/05/24		
	1 PLACE ± --- ± ---		APPROVED BY				
	0 PLACE ± --- ± ---		ANGULAR ± 2°		MATERIAL NO.	DOCUMENT NO.	SHEET NO.
	DRAFT WHERE APPLICABLE MUST REMAIN WITHIN DIMENSIONS		SEE TABLE		SD-73403-781		3 OF 3
	THIS DRAWING CONTAINS INFORMATION THAT IS PROPRIETARY TO MOLEX INCORPORATED AND SHOULD NOT BE USED WITHOUT WRITTEN PERMISSION						

MATERIALS AND FINISHES

BODY: BRASS
PLATED: NICKEL

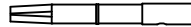
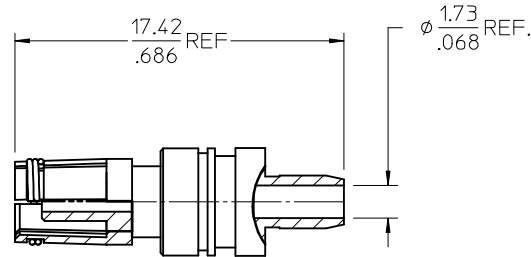
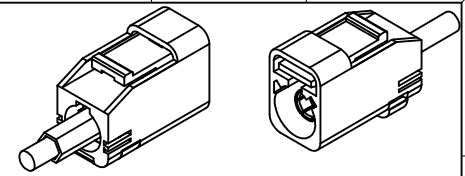
CENTER CONTACT: PHOSPOR BRONZE
PLATED: GOLD

CRIMP TUBE: BRASS
PLATED: NICKEL

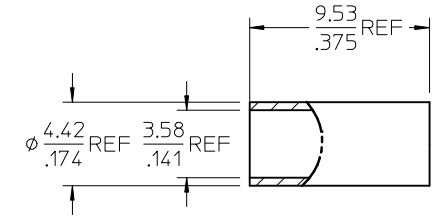
OUTER CASING: NYLON 66 OR EQUIVALENT
KEYING: SEE TABLE
COLOR: SEE TABLE

INSULATOR: PP

PACKAGING BY POLYBAG M00 1K

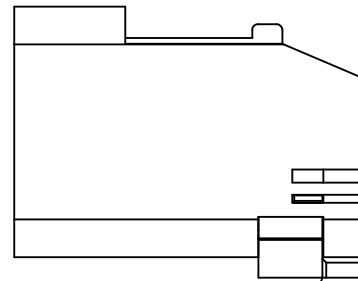
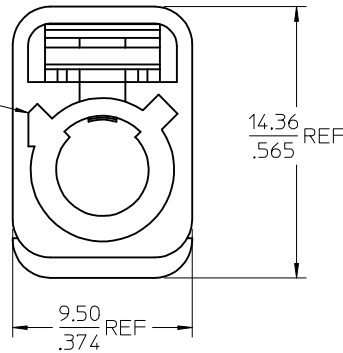


CENTER CONTACT
PART NO.: 89538-0781

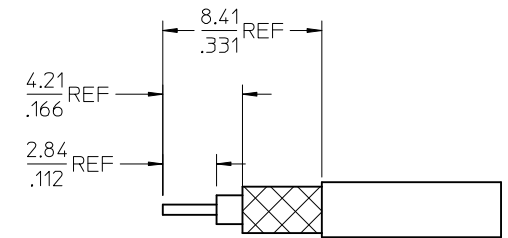


CRIMP TUBE
PART NO.: 89684-9012

FAKRA
CONNECTOR
KEYING
CODE B SHOWN



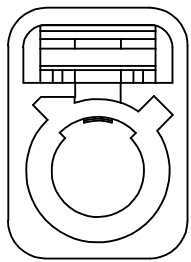
SECONDARY LOCK
(TPA)



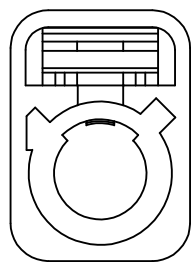
PART # SEE SHEET 2

AS-73597-045	ASSYMBLY INSTRUCTIONS
PS-89675-331	PRODUCT SPECIFICATION
DIN 72594-1	INTERFACE SPECIFICATION
SPECIFICATION	DESCRIPTION

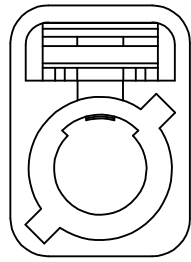
CHG NEW RELEASE PDR: 2017/05/24 ECN: 017-0393 DRAWN: YCHENG 2017/05/19 CHKD: APPR: YCHENG 2017/05/24	QUALITY SYMBOLS	GENERAL TOLERANCES (UNLESS SPECIFIED)	DIMENSION STYLE	SCALE	DESIGN UNITS	THIRD ANGLE PROJECTION
	▽=0	mm INCH	MM/IN	5:1	METRIC	
	▽=0	4 PLACES ± --- ± ---	DRAWN BY DATE	TITLE		
	▽=0	3 PLACES ± --- ± ---	YCHENG 2017/05/16	SMB PLUG FAKRA II STR. FOR RD316 500HM		
	2 PLACES ± --- ± ---	CHECKED BY DATE	molex			
	1 PLACE ± --- ± ---	APPROVED BY DATE	SD-73403-781			SHEET NO.
	0 PLACE ± --- ± ---	YCHENG 2017/05/24	SEE SHEET 2			1 OF 3
	ANGULAR ± 2 °	MATERIAL NO.	DOCUMENT NO.			
	DRAFT WHERE APPLICABLE MUST REMAIN WITHIN DIMENSIONS	SIZE	THIS DRAWING CONTAINS INFORMATION THAT IS PROPRIETARY TO MOLEX INCORPORATED AND SHOULD NOT BE USED WITHOUT WRITTEN PERMISSION			



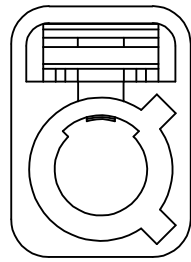
CODE A



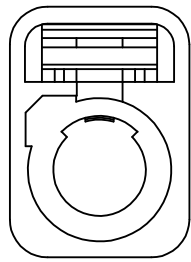
CODE B



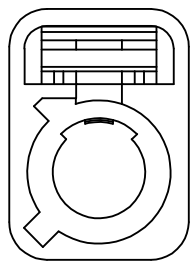
CODE C



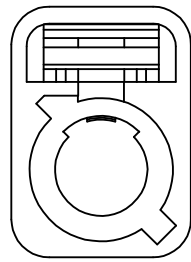
CODE D



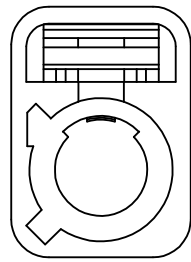
CODE E



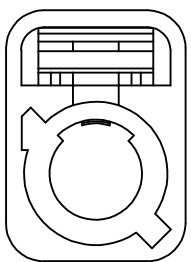
CODE F



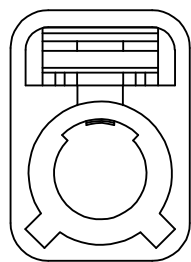
CODE G



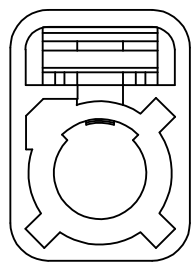
CODE H



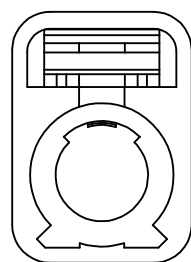
CODE I



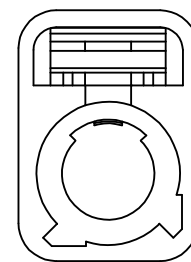
CODE K



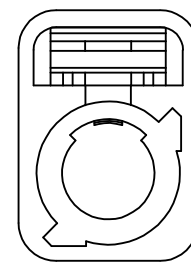
CODE Z



CODE L



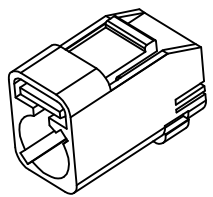
CODE M



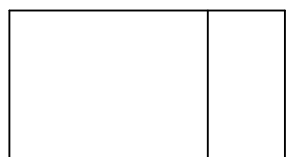
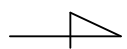
CODE N

N	PASTEL GREEN	73403-7823
M	PASTEL ORANGE	73403-7822
L	CARMINE RED	73403-7821
Z	WATER BLUE	73403-7820
K	CURRY YELLOW	73403-7819
I	BEIGE	73403-7818
H	VIOLET	73403-7817
G	GRAY	73403-7816
F	BROWN	73403-7815
E	GREEN	73403-7814
D	BORDEAUXVIOLET	73403-7813
C	BLUE	73403-7812
B	CREAM WHITE	73403-7811
A	BLACK	73403-7810
KEYING CODE	COLOR	PART NO.

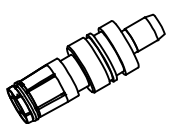
SEE SHEET 1 EC NO: URF2017-0393 DRAWN: YCHENG 2017/05/19 CHKD: APPR: YCHENG 2017/05/24 REV:	QUALITY SYMBOLS	GENERAL TOLERANCES (UNLESS SPECIFIED)	DIMENSION STYLE	SCALE	DESIGN UNITS	THIRD ANGLE PROJECTION
	▽=0	mm INCH	MM/IN	5:1	METRIC	
	▽=0	4 PLACES ± --- ± ---	DRAWN BY DATE	TITLE		
	▽=0	3 PLACES ± --- ± ---	YCHENG 2017/05/16	SMB PLUG FAKRA II STR. FOR RD316 500HM		
	2 PLACES ± --- ± ---	CHECKED BY DATE	APPROVED BY DATE			
	1 PLACE ± --- ± ---		YCHENG 2017/05/24			
	0 PLACE ± --- ± ---		MATERIAL NO.		DOCUMENT NO.	
	ANGULAR ± 2°	DRAFT WHERE APPLICABLE MUST REMAIN WITHIN DIMENSIONS	SEE TABLE		SD-73403-781	
			SIZE C		SHEET NO. 2 OF 3	
			THIS DRAWING CONTAINS INFORMATION THAT IS PROPRIETARY TO MOLEX INCORPORATED AND SHOULD NOT BE USED WITHOUT WRITTEN PERMISSION			



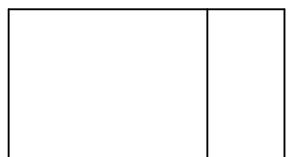
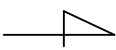
P/N:89618-373X



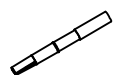
250 PCS SET PER BAG



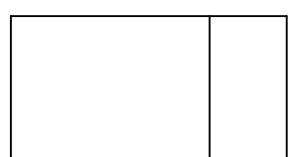
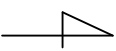
P/N:89618-350X



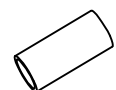
250 PCS SET PER BAG



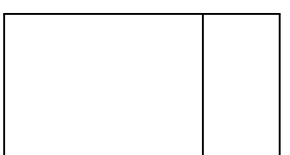
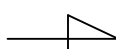
P/N:89538-0781



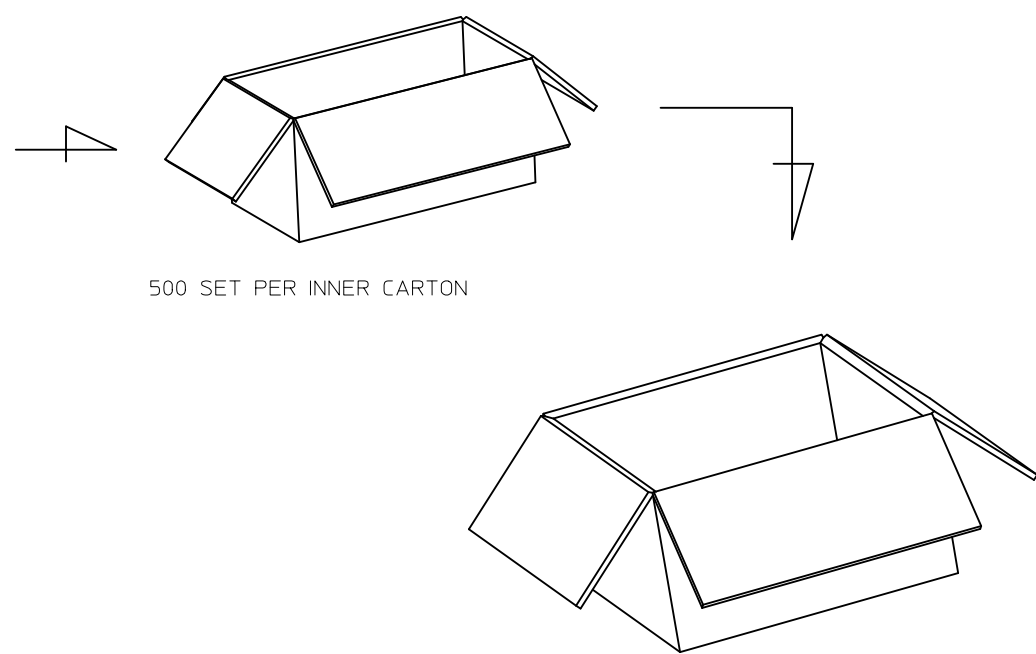
250 PCS SET PER BAG



P/N:89684-9012



250 PCS SET PER BAG



500 SET PER INNER CARTON

1000 SET PER OUTER CARTON

CHG:SEE SHEET 1 EC NO: URF2017-0393 DRAWN:YCHENG 2017/05/19 CHKD: APPR:YCHENG	QUALITY SYMBOLS	GENERAL TOLERANCES (UNLESS SPECIFIED)		DIMENSION STYLE	SCALE	DESIGN UNITS	THIRD ANGLE PROJECTION
	▽=0	mm	INCH	MM/IN	2.5:1	METRIC	
	▽=0	4 PLACES ± --- ± ---		DRAWN BY DATE	TITLE		
	▽=0	3 PLACES ± --- ± ---		YCHENG 2017/05/16	SMB PLUG FAKRA II STR. FOR RD316 500HM		
REV	DESCRIPTION	ANGULAR ± 2°		CHECKED BY DATE	APPROVED BY DATE		
A		DRAFT WHERE APPLICABLE MUST REMAIN WITHIN DIMENSIONS		YCHENG 2017/05/24	MATERIAL NO. DOCUMENT NO.		
		SIZE		SEE TABLE			SHEET NO.
		C		THIS DRAWING CONTAINS INFORMATION THAT IS PROPRIETARY TO MOLEX INCORPORATED AND SHOULD NOT BE USED WITHOUT WRITTEN PERMISSION			3 OF 3