

MATERIALS AND FINISHES;

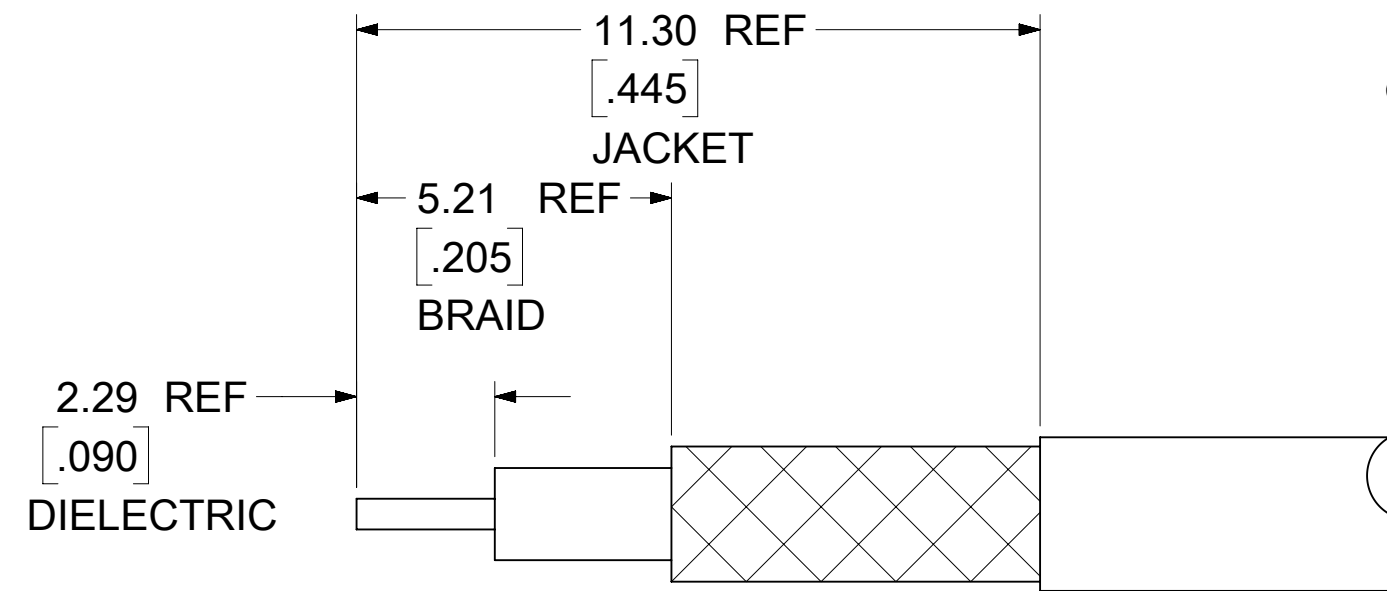
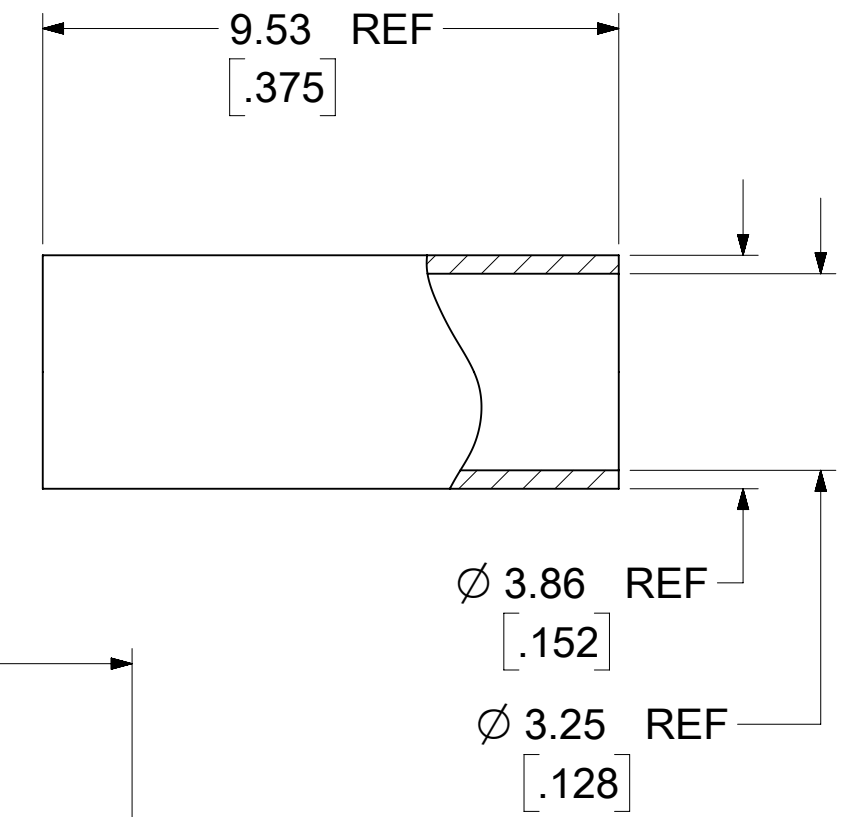
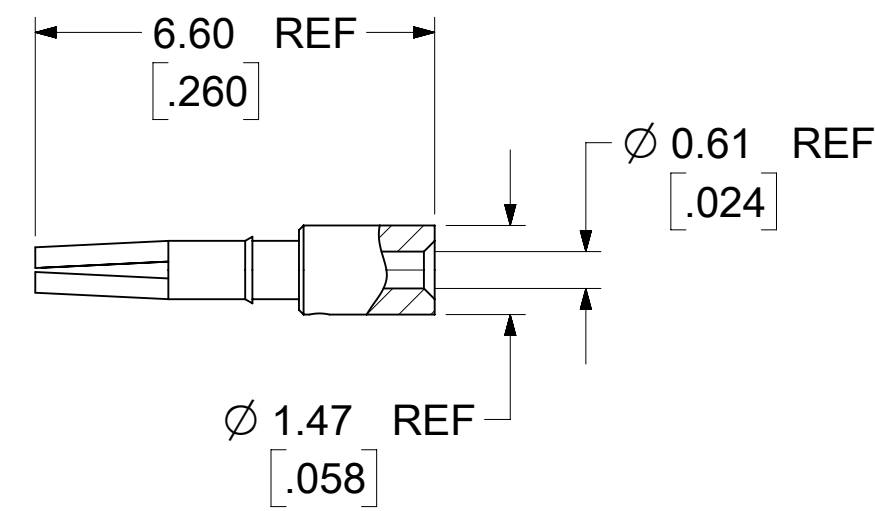
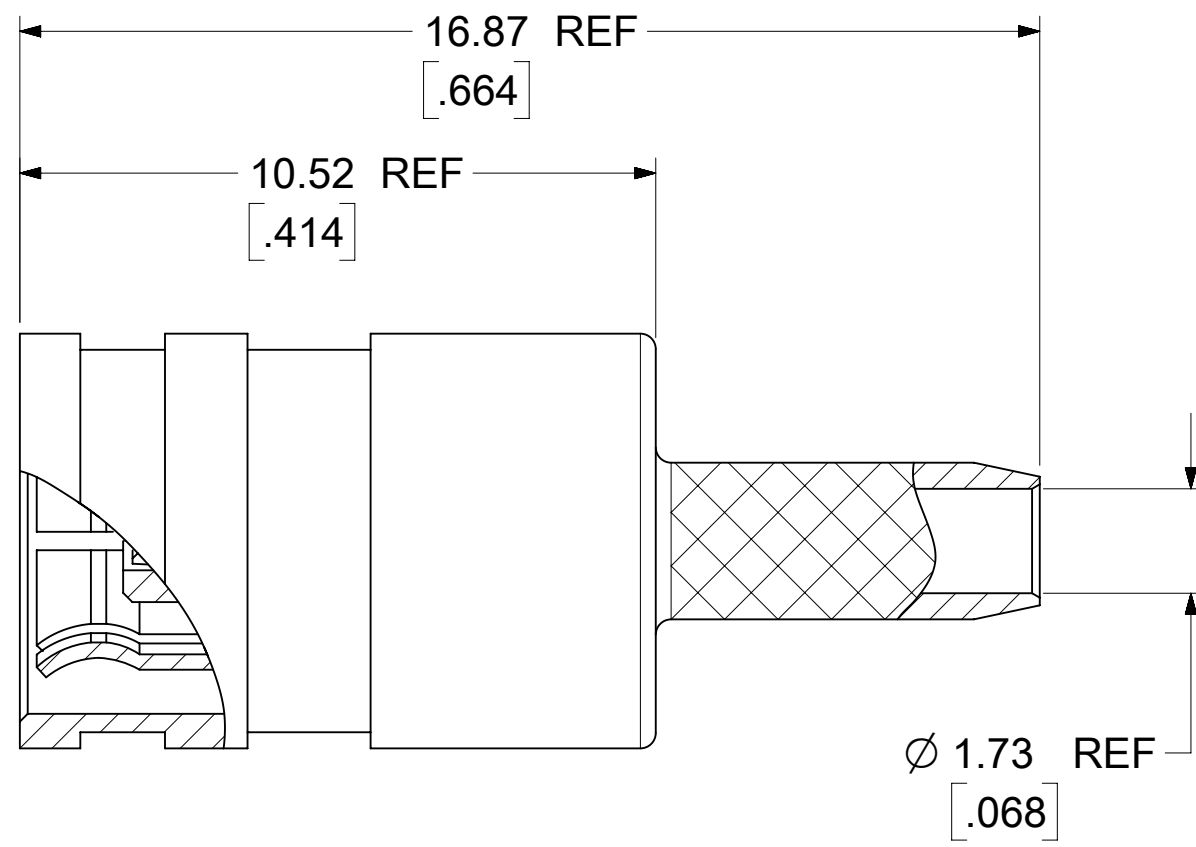
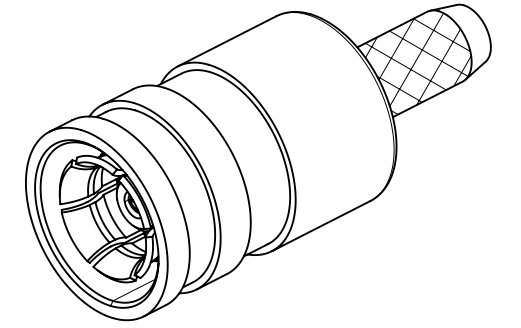
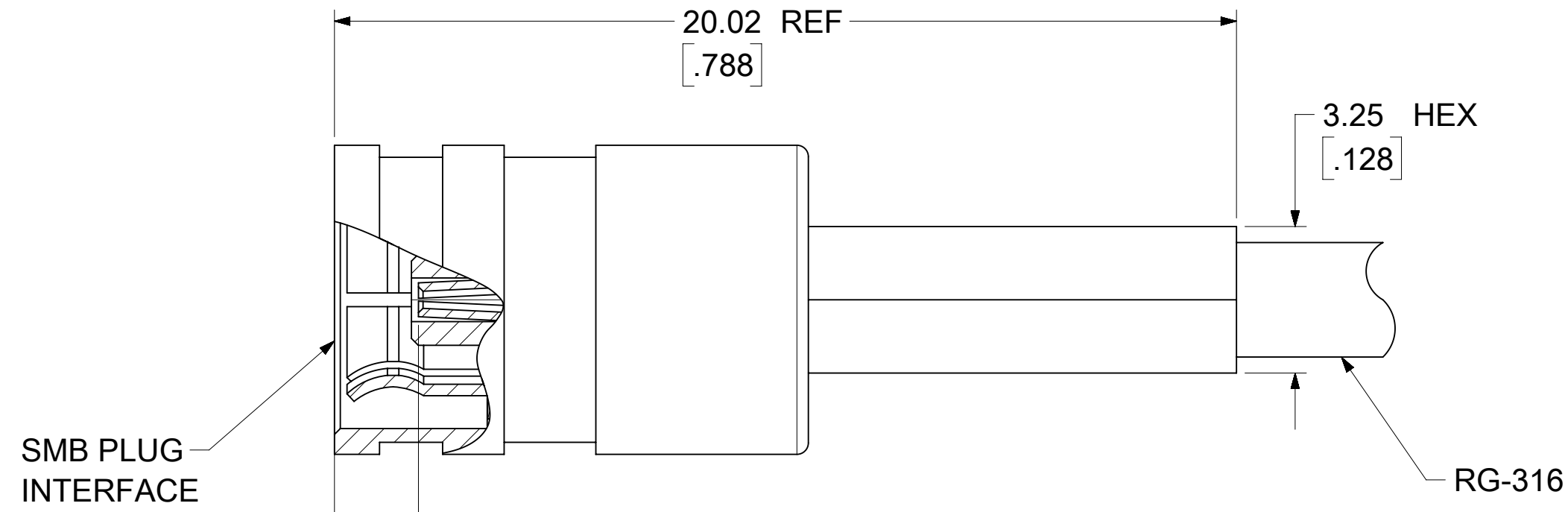
BODY, CRIMP TUBE: BRASS
PLATED NICKEL

CENTER CONTACT: PHOSPHOR BRONZE
PLATED SEE TABLE

INSULATOR: TEFLON

OUTER CONTACT: BERYLLIUM COPPER
PLATED NICKEL

PACKAGE BY TRAY
SEE 89542-0040 DRAWING



RECOMMENDED STRIPPING DIMENSIONS

PART # 73404-071*

73404-0711	30u" Au
73404-0710	10u" Au
PART NO	CONTACT PLATING THICKNESS

PS-89675-3540	PRODUCT SPECIFICATION
MIL-STD-348A, FIG. 311-2	INTERFACE
SPECIFICATION	DESCRIPTION

B1	2020/03/03	ADD -0711 PART NO PER EWR 13499-C
REV	DATE	DESCRIPTION

FUNCTIONAL SYMBOLS	THIS DRAWING CONTAINS INFORMATION THAT IS PROPRIETARY TO MOLEX ELECTRONIC TECHNOLOGIES, LLC AND SHOULD NOT BE USED WITHOUT WRITTEN PERMISSION		CURRENT REV DESC:	
	DIMENSION UNITS	SCALE		
FA = 0	HYBRID	1:1		
FE = 0	GENERAL TOLERANCES (UNLESS SPECIFIED)			
	ANGULAR TOL ± 2.0°			
DIVISIONAL SYMBOLS	4 PLACES	±		
	3 PLACES	±		
	2 PLACES	±		
	1 PLACE	±		
0 PLACES	±			
DRAFT WHERE APPLICABLE MUST REMAIN WITHIN DIMENSIONS		THIRD ANGLE PROJECTION	DRAWING	SERIES
			C-SIZE	73404
		EC NO: 633339		2020/03/03
		DRWN: JSU18		2020/03/18
		CHK'D: YCHENG		2020/03/18
		APPR: YCHENG		2020/03/18
		INITIAL REVISION:		
		DRWN: SSHAH		2007/03/20
		APPR: JWIENER		2007/03/20
		MATERIAL NUMBER	CUSTOMER	SHEET NUMBER
		SD-73404-071	TS-SCI	1 OF 1

molex

SMB PLUG STR RG-316
50 OHMS, EWR-1503 SMB-PC

PRODUCT CUSTOMER DRAWING

SD-73404-071

PSD 001 B1

DOCUMENT STATUS	RELEASE DATE
-----------------	--------------