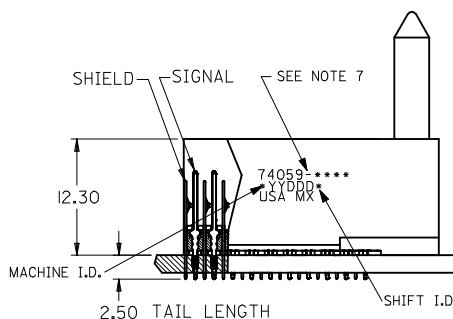
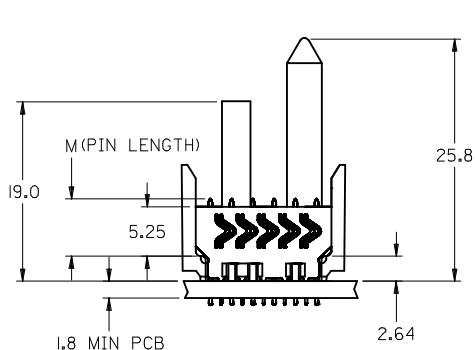
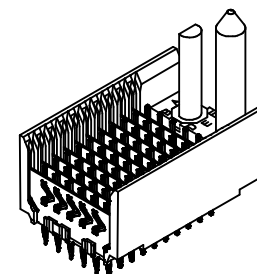
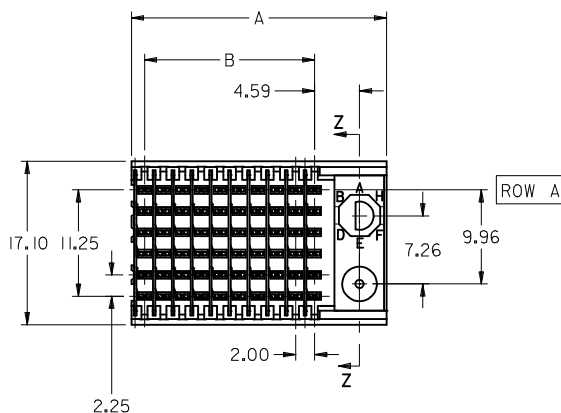


BACKPLANE HOLE PATTERN
RECOMMENDED DIMENSIONS



NOTES:

1. MATERIALS:
HOUSING - LIQUID CRYSTAL POLYMER (LCP),
GLASS-FILLED, UL 94V-0, COLOR: BLACK
SIGNAL PIN & SHIELD - COPPER ALLOY
2. FINISHES:
CONTACT AREA: SELECTIVE GOLD (Au)
PCB TAILS: SELECTIVE MATTE TIN (Sn)
NICKEL (Ni) OVERALL.
3. THIS PART CONFORMS TO MOLEX PRODUCT SPECIFICATION PS-74031-999
4. FOR MIXED CONTACT LENGTHS CONSULT MOLEX FOR AVAILABILITY
5. FOR SPECIFIC MATERIAL NUMBERS & MATING INFORMATION REFER TO SHEET 2 AND 3
6. PACKAGE PER PK-74058-003
7. MARK PART WITH PART NUMBER & DATE CODE APPROXIMATELY WHERE SHOWN
8. MAPS (MOLEX ADVANCED PLATING SYSTEM).

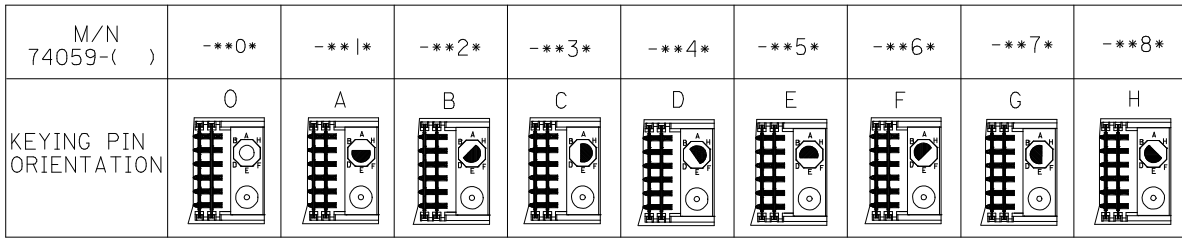
THE PRIMARY CARTON WITH A LABEL STATING "ELV AND RoHS COMPLAINT" IS LEAD FREE. CARTONS WITHOUT THIS LABEL MAY CONTAIN LEAD.

LEAD FREE CONVERSION EC NO: UCP2013-0687 DRAWN BY: 2012/08/21 CHKD:MMOLFE 2012/11/24 APPR:SMILLER 2012/12/14	QUALITY SYMBOLS	DESCRIPTION
	$\nabla = 0$	
	$\nabla = 0$	
	$\nabla = 0$	
REV: 0		

GENERAL TOLERANCES (UNLESS SPECIFIED)	
mm	INCH
4 PLACES	± 0.25
3 PLACES	± 0.25
2 PLACES	± 0.25
1 PLACE	± 0.25
0 PLACE	± 0.25
ANGULAR $\pm 1/2^\circ$	
DRAFT WHERE APPLICABLE MUST REMAIN WITHIN DIMENSIONS	

DIMENSION STYLE MM ONLY	
DRAWN BY	DATE
JMELTON	2010/05/20
CHECKED BY	DATE
SDANNELLEY	2010/05/20
APPROVED BY	DATE
SMILLER	2010/07/14

SCALE 2.5:1	DESIGN UNITS METRIC	THIRD ANGLE PROJECTION
TITLE VHDM 6 ROW SHIELD END BACKPLANE SALES DRAWING		
molex		
MATERIAL NO. SEE SHT 2	DOCUMENT NO. SD-74059-002	SHEET NO. 1 OF 2
THIS DRAWING CONTAINS INFORMATION THAT IS PROPRIETARY TO MOLEX INCORPORATED AND SHOULD NOT BE USED WITHOUT WRITTEN PERMISSION		



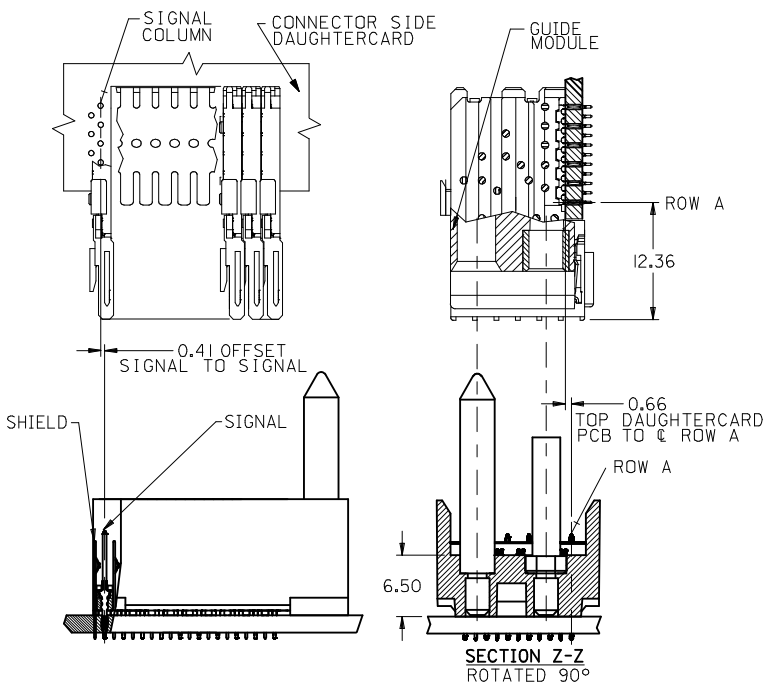
74059 - * * * *

NUMBER OF COLUMNS/PLATING

- 10 = 10 COLUMN MATTE TIN (FORMERLY TIN/LEAD)
- 21 = 11 COLUMN MATTE TIN (FORMERLY TIN/LEAD)
- 25 = 25 COLUMN MATTE TIN (FORMERLY TIN/LEAD)
- 60 = 10 COLUMN MATTE TIN (MAPS)
- 71 = 11 COLUMN MATTE TIN (MAPS)
- 75 = 25 COLUMN MATTE TIN (MAPS)
- 90 = 10 COLUMN MATTE TIN
- 81 = 11 COLUMN MATTE TIN
- 85 = 25 COLUMN MATTE TIN

CONTACT LOAD (PIN HEIGHT)

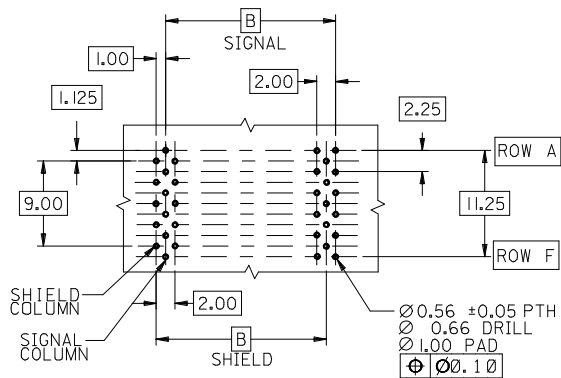
- 1 & 6 = 4.75
- 2 & 7 = 6.25
- 3 & 8 = 4.25
- 4 & 9 = 5.15



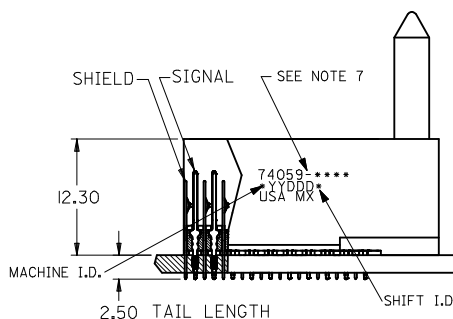
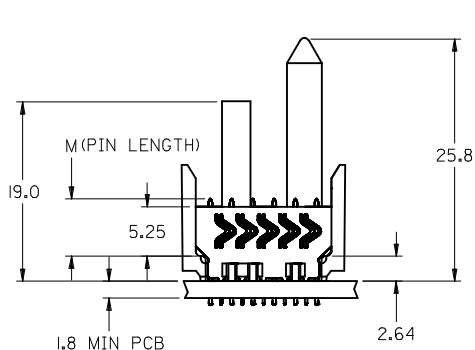
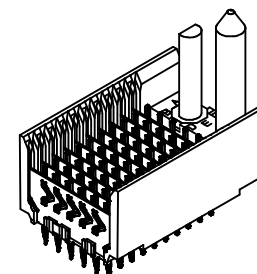
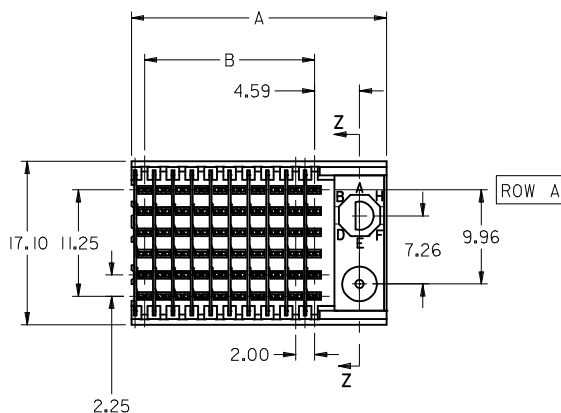
PART NUMBER	COLUMN	NUMBER OF SIGNAL PIN	NUMBER OF SHIELD	A	B	M	GOLD THICKNESS MICROMETER	TIN THICKNESS MICROMETER
74059-60*1							0.25 MAPS	
74059-*0*1	10	60	10	27.00	18.00	4.75	0.76	0.76-152
74059-*0*6							1.27	
74059-75*1							0.25 MAPS	
74059-*5*1	25	150	25	57.00	48.00	6.25	0.76	
74059-*5*6							1.27	
74059-60*2	10	60	10	27.00	18.00		0.25 MAPS	
74059-*0*2						4.25	0.76	
74059-*0*7	25	150	25	57.00	48.00		1.27	
74059-75*2							0.25 MAPS	
74059-*5*2	10	60	10	27.00	18.00	5.15	0.76	
74059-*0*3	25	150	25	57.00	48.00		1.27	
74059-75*3							0.25 MAPS	
74059-*5*3	10	60	10	27.00	18.00	6.25	0.76	
74059-*0*8	25	150	25	57.00	48.00		1.27	
74059-75*3							0.25 MAPS	
74059-*5*8	10	60	10	27.00	18.00	5.15	0.76	
74059-*0*4	25	150	25	57.00	48.00		1.27	
74059-75*4							0.25 MAPS	
74059-*5*4	10	60	10	27.00	18.00	4.75	0.76	
74059-*0*9	25	150	25	57.00	48.00		1.27	
74059-75*4							0.25 MAPS	
74059-*5*9	10	60	10	27.00	18.00	6.25	0.76	
	25	150	25	57.00	48.00		1.27	
							0.25 MAPS	

PART NUMBER	COLUMN	NUMBER OF SIGNAL PIN	NUMBER OF SHIELD	A	B	M	GOLD THICKNESS MICROMETER	TIN THICKNESS MICROMETER
74059-71*1							0.25 MAPS	
74059-*1*1	11	66	11	29.00	20.00	4.75	0.76	0.76-152
74059-*1*6							1.27	
74059-71*2							0.25 MAPS	
74059-*1*2	11	66	11	29.00	20.00	6.25	0.76	
74059-*1*7							1.27	
74059-71*3							0.25 MAPS	
74059-*1*3	11	66	11	29.00	20.00	4.25	0.76	
74059-*1*8							1.27	
74059-71*4							0.25 MAPS	
74059-*1*4	11	66	11	29.00	20.00	5.15	0.76	
74059-*1*9							1.27	
							0.25 MAPS	

SEE SHEET 1 EC NO: UCP2013-0687 DRWNGES 2012/08/21 CHKD:MMWLF 2012/11/21 APPR:SMILLER 2012/12/14 REVISIONS	QUALITY SYMBOLS	GENERAL TOLERANCES (UNLESS SPECIFIED)	DIMENSION STYLE MM ONLY	SCALE 2.5:1	DESIGN UNITS METRIC	THIRD ANGLE PROJECTION
	▽=0	4 PLACES ±	mm INCH	DRAWN BY JMELTON	DATE 2010/05/20	TITLE VHDM 6 ROW SHIELD END BACKPLANE SALES DRAWING
	▽=0	3 PLACES ±		CHECKED BY SDANNELLEY	DATE 2010/05/20	
	▽=0	2 PLACES ±0.10		APPROVED BY SMILLER	DATE 2010/07/14	
	▽=0	1 PLACE ±0.25		MATERIAL NO.	DOCUMENT NO. SD-74059-002	
	0 PLACE ±		ANGULAR ±1/2°	SEE TABLE	SHEET NO. 2 OF 2	
		DRAFT WHERE APPLICABLE MUST REMAIN WITHIN DIMENSIONS	THIS DRAWING CONTAINS INFORMATION THAT IS PROPRIETARY TO MOLEX INCORPORATED AND SHOULD NOT BE USED WITHOUT WRITTEN PERMISSION			



BACKPLANE HOLE PATTERN
RECOMMENDED DIMENSIONS



NOTES:

1. MATERIALS:
HOUSING - LIQUID CRYSTAL POLYMER (LCP),
GLASS-FILLED, UL 94V-0, COLOR: BLACK
SIGNAL PIN & SHIELD - COPPER ALLOY
2. FINISHES:
CONTACT AREA: SELECTIVE GOLD (Au)
PCB TAILS: SELECTIVE MATTE TIN (Sn)
NICKEL (Ni) OVERALL.
3. THIS PART CONFORMS TO MOLEX PRODUCT SPECIFICATION PS-74031-999
4. FOR MIXED CONTACT LENGTHS CONSULT MOLEX FOR AVAILABILITY
5. FOR SPECIFIC MATERIAL NUMBERS & MATING INFORMATION REFER TO SHEET 2 AND 3
6. PACKAGE PER PK-74058-003
7. MARK PART WITH PART NUMBER & DATE CODE APPROXIMATELY WHERE SHOWN
8. MAPS (MOLEX ADVANCED PLATING SYSTEM).

THE PRIMARY CARTON WITH A LABEL STATING "ELV AND RoHS COMPLAINT" IS LEAD FREE. CARTONS WITHOUT THIS LABEL MAY CONTAIN LEAD.

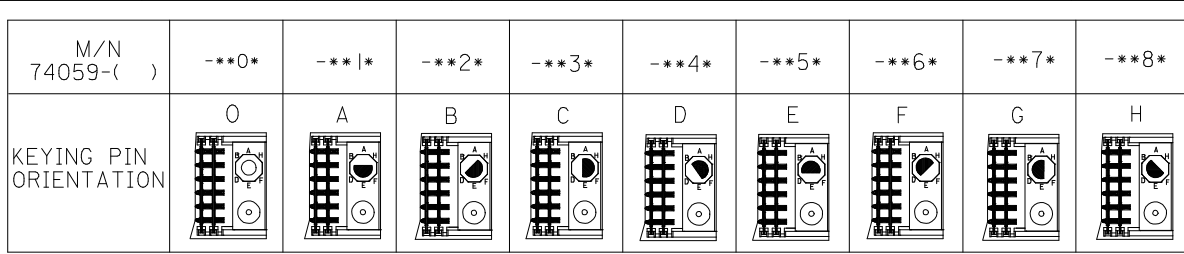
LEAD FREE CONVERSION EC NO: UCP2013-0687 DRAWN BY: 2012/08/21 CHKD:MMOLFE 2012/11/24 APPR:SMILLER 2012/12/14	QUALITY SYMBOLS	DESCRIPTION
	$\nabla = 0$	
	$\nabla = 0$	
	$\nabla = 0$	
REV		

GENERAL TOLERANCES (UNLESS SPECIFIED)	
mm	INCH
4 PLACES	± 0.25
3 PLACES	± 0.25
2 PLACES	± 0.25
1 PLACE	± 0.25
0 PLACE	± 0.25
ANGULAR $\pm 1/2^\circ$	
DRAFT WHERE APPLICABLE MUST REMAIN WITHIN DIMENSIONS	

DIMENSION STYLE MM ONLY	
DRAWN BY	DATE
JMELTON	2010/05/20
CHECKED BY	DATE
SDANNELLEY	2010/05/20
APPROVED BY	DATE
SMILLER	2010/07/14
MATERIAL NO. SEE SHT 2	

SCALE 2.5:1	DESIGN UNITS METRIC	THIRD ANGLE PROJECTION
TITLE VHDM 6 ROW SHIELD END BACKPLANE SALES DRAWING		
molex		
DOCUMENT NO. SD-74059-002	SHEET NO. 1 OF 2	

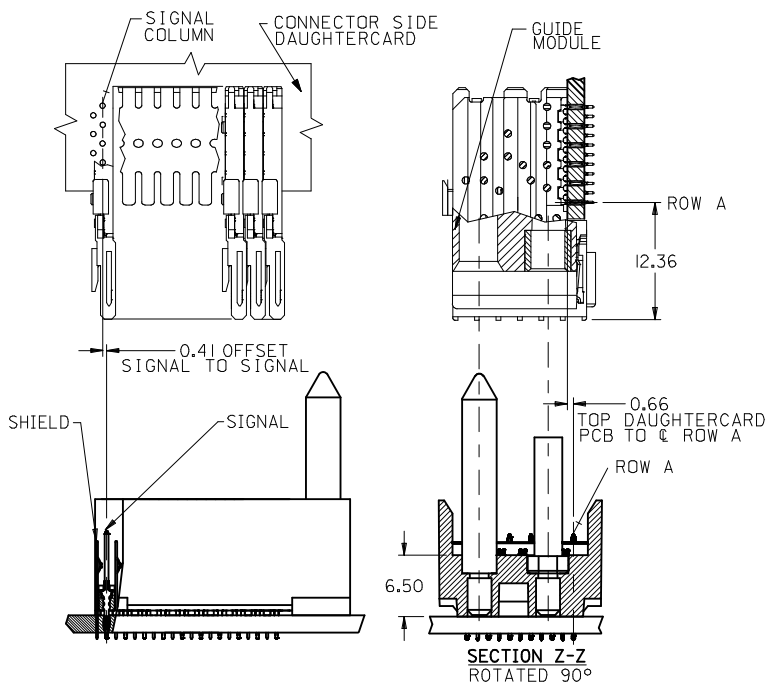
THIS DRAWING CONTAINS INFORMATION THAT IS PROPRIETARY TO MOLEX INCORPORATED AND SHOULD NOT BE USED WITHOUT WRITTEN PERMISSION



74059 - * * * *

NUMBER OF COLUMNS/PLATING
 10 = 10 COLUMN MATTE TIN (FORMERLY TIN/LEAD)
 21 = 11 COLUMN MATTE TIN (FORMERLY TIN/LEAD)
 25 = 25 COLUMN MATTE TIN (FORMERLY TIN/LEAD)
 60 = 10 COLUMN MATTE TIN (MAPS)
 71 = 11 COLUMN MATTE TIN (MAPS)
 75 = 25 COLUMN MATTE TIN (MAPS)
 90 = 10 COLUMN MATTE TIN
 81 = 11 COLUMN MATTE TIN
 85 = 25 COLUMN MATTE TIN

CONTACT LOAD (PIN HEIGHT)
 1 & 6 = 4.75
 2 & 7 = 6.25
 3 & 8 = 4.25
 4 & 9 = 5.15



PART NUMBER	COLUMN	NUMBER OF SIGNAL PIN	NUMBER OF SHIELD	A	B	M	GOLD THICKNESS MICROMETER	TIN THICKNESS MICROMETER
74059-60*1							0.25 MAPS	
74059-*0*1	10	60	10	27.00	18.00	4.75	0.76	0.76-152
74059-*0*6							1.27	
74059-*5*1	25	150	25	57.00	48.00		0.25 MAPS	
74059-*5*6						6.25	1.27	
74059-60*2	10	60	10	27.00	18.00		0.25 MAPS	
74059-*0*2							0.76	
74059-*0*7						4.25	1.27	
74059-75*2	25	150	25	57.00	48.00		0.25 MAPS	
74059-*5*2							0.76	
74059-*5*7						5.15	1.27	
74059-60*3	10	60	10	27.00	18.00		0.25 MAPS	
74059-*0*3							0.76	
74059-75*3	25	150	25	57.00	48.00	0.25 MAPS		
74059-*5*3						6.25	1.27	
74059-*5*8							0.76	
74059-60*4	10	60	10	27.00	18.00		0.25 MAPS	
74059-*0*4						4.75	1.27	
74059-*0*9							0.76	
74059-75*4	25	150	25	57.00	48.00		0.25 MAPS	
74059-*5*4						6.25	1.27	
74059-*5*9							0.76	
74059-*5*9							1.27	

PART NUMBER	COLUMN	NUMBER OF SIGNAL PIN	NUMBER OF SHIELD	A	B	M	GOLD THICKNESS MICROMETER	TIN THICKNESS MICROMETER
74059-71*1							0.25 MAPS	
74059-*1*1	11	66	11	29.00	20.00	4.75	0.76	0.76-152
74059-*1*6							1.27	
74059-71*2	11	66	11	29.00	20.00		0.25 MAPS	
74059-*1*2						6.25	0.76	
74059-*1*7							1.27	
74059-71*3	11	66	11	29.00	20.00		0.25 MAPS	
74059-*1*3						4.25	0.76	
74059-*1*8							1.27	
74059-71*4	11	66	11	29.00	20.00		0.25 MAPS	
74059-*1*4						5.15	0.76	
74059-*1*9							1.27	
74059-*1*9							1.27	

SEE SHEET 1 EC NO: UCP2013-0687 DRWNGES 2012/08/21 CHKD:MMWLF 2012/11/21 APPR:SMILLER 2012/12/14 REVISIONS	QUALITY SYMBOLS	GENERAL TOLERANCES (UNLESS SPECIFIED)	DIMENSION STYLE MM ONLY	SCALE 2.5:1	DESIGN UNITS METRIC	THIRD ANGLE PROJECTION
	▽=0	4 PLACES ± --- INCH	DRAWN BY JMELTON	DATE 2010/05/20	TITLE VHM 6 ROW SHIELD END BACKPLANE SALES DRAWING	
	▽=0	3 PLACES ± --- INCH	CHECKED BY SDANNELLEY	DATE 2010/05/20		
	▽=0	2 PLACES ± 0.10 INCH	APPROVED BY SMILLER	DATE 2010/07/14		
		1 PLACE ± 0.25 INCH	MATERIAL NO.		THIS DRAWING CONTAINS INFORMATION THAT IS PROPRIETARY TO MOLEX INCORPORATED AND SHOULD NOT BE USED WITHOUT WRITTEN PERMISSION	
		0 PLACE ± INCH	ANGULAR ±1/2°			