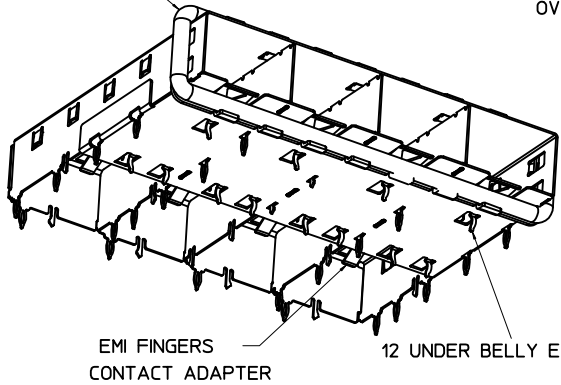
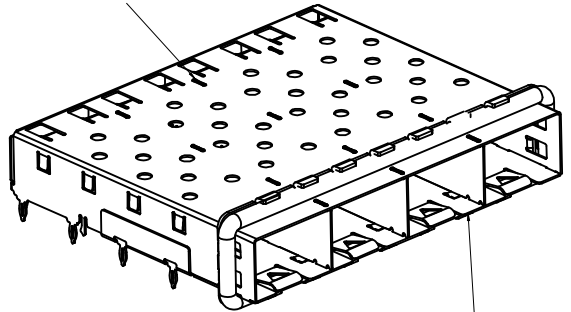


360° ELASTOMER GASKET COMPLIES WITH (SFP) MSA BOARD AND BEZEL LOCATIONS



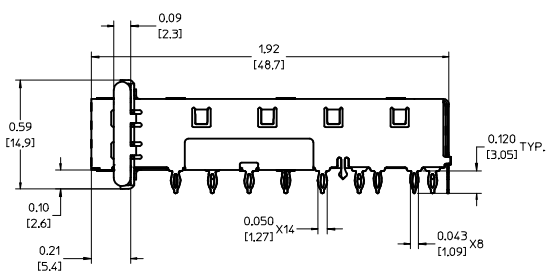
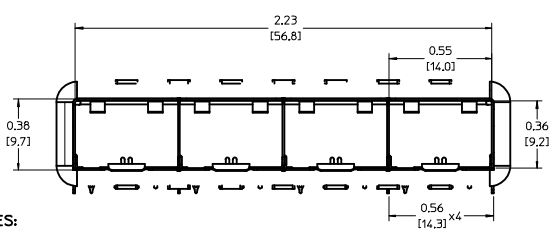
EMI FINGERS CONTACT ADAPTER

INNER WALL TABS ARE COINED OVER BASE AND COVER FOR RIGIDITY



12 UNDER BELLY EMI PINS

DIMENSIONS OF EACH INNER CAGE DESIGNED TO FUNCTION WITH SMALL FORM-FACTOR PLUGGABLE (SFP) TRANSCEIVER



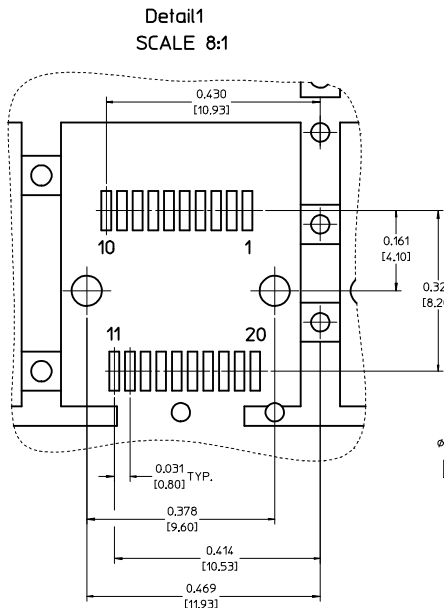
- NOTES:
- PRESS FIT LEGS 0.120" LONG- 0.062 [1.57] MINIMUM PCB THICKNESS. FOR SINGLE SIDED USE ONLY.
 - MATERIAL: COPPER ALLOY
PLATING: NONE

NOTE: A PRE-PLATED NICKEL VERSION IS AVAILABLE. REFER TO DOCUMENT SD-74728-420
 - REFERENCE DOCUMENTS:
PRODUCT SPECIFICATION: PS-74728-000
COSMETIC SPECIFICATIONS: WI-HP-7-2774 AND WI-HPA-7-0093
TEST SUMMARY: TS-74728-0415
 - MATES WITH SERIES 74728. LIGHT PIPE COVER ASSEMBLY.
 - THIS PART MEETS THE RESTRICTION OF HAZARDOUS SUBSTANCES IN ELECTRICAL AND ELECTRONIC EQUIPMENT (ROHS) DIRECTIVE (2002/95/EC).

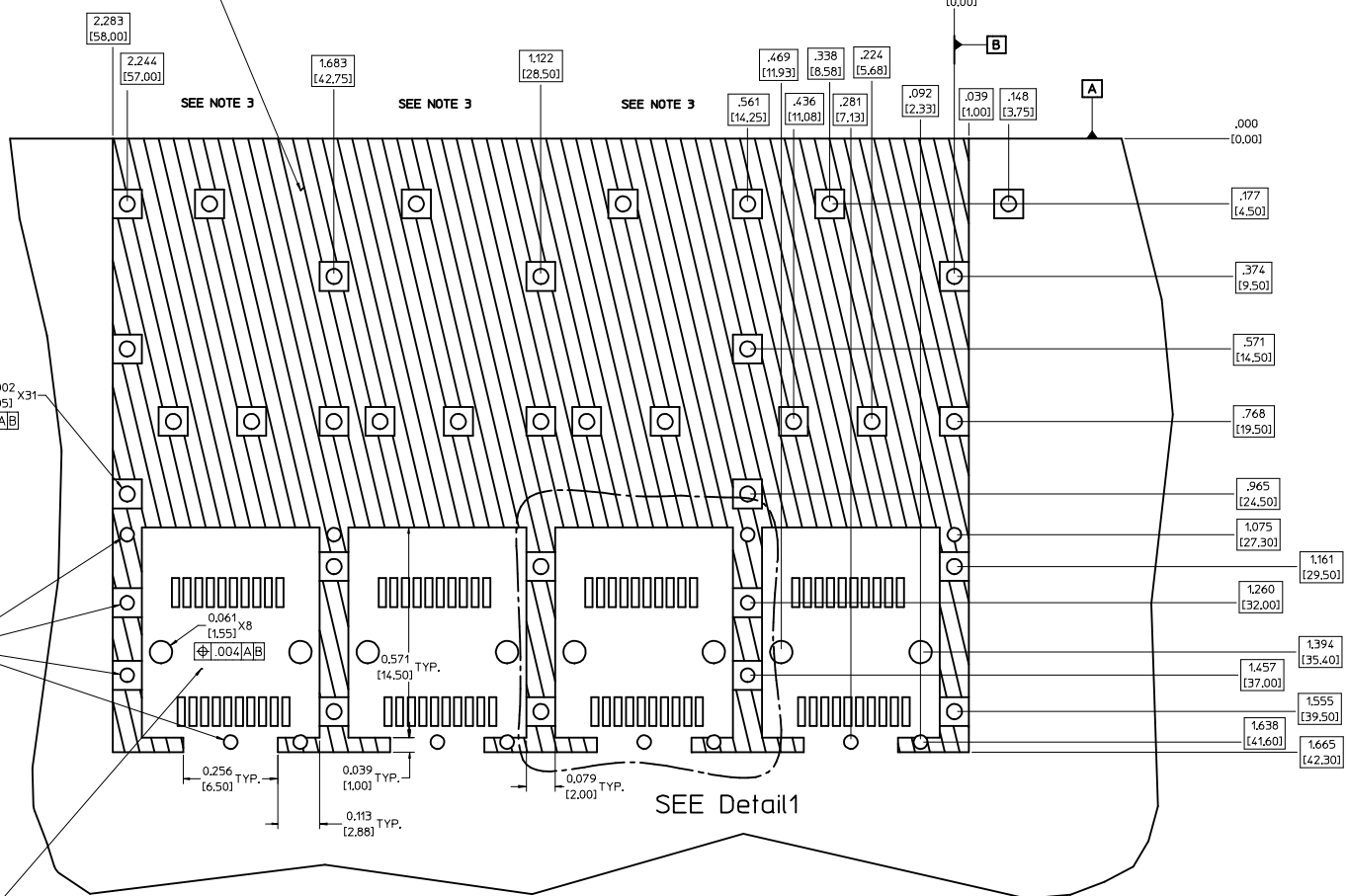
EC NO: USY2006-0225 DRN:KSMONSON006/0124 CHKD:BRUSSELL2006/0124 APPR:BRUSSELL2006/0125	QUALITY SYMBOLS -0 -0	GENERAL TOLERANCES (UNLESS SPECIFIED) .mm INCH		SCALE 3:1	DESIGN UNITS METRIC	THIRD ANGLE PROJECTION	REVISE ON CAD ONLY		
		4 PLACES ± .005 ± .005 3 PLACES ± .01 ± .005 2 PLACES ± 0.13 ± .01 1 PLACE ± 0.25 ± .01	DIMENSION STYLE IN/MM	DRAWN BY KSIMONSO	DATE 2005/04/07	TITLE 1X4 SFP CAGE ASSEMBLY, FRAME W/ TABS, W/ 0.090 OD GASKET			
		ANGULAR ± 1°	CHECKED BY BRUSSELL	DATE 2005/04/07	MOLEX INCORPORATED				
		DRAFT WHERE APPLICABLE MUST REMAIN WITHIN DIMENSIONS	APPROVED BY BRUSSELL	DATE 2005/04/07	MATERIAL NO. 747280417	DOCUMENT NO. SD-74728-417	SHEET NO. 1 OF 4	THIS DRAWING CONTAINS INFORMATION THAT IS PROPRIETARY TO MOLEX INCORPORATED AND SHOULD NOT BE USED WITHOUT WRITTEN PERMISSION	

20 | 19 | 18 | 17 | 16 | 15 | 14 | 13 | 12 | 11 | 74728 | 9 | 8 | 7 | 6 | 5 | 4 | 3 | 2 | 1

PCB LAYOUT FOR SINGLE SIDE MOUNTING



CROSS-HATCHED AREA DENOTES
COMPONENT AND TRACE KEEP-OUT
(EXCEPT CHASSIS GROUND)

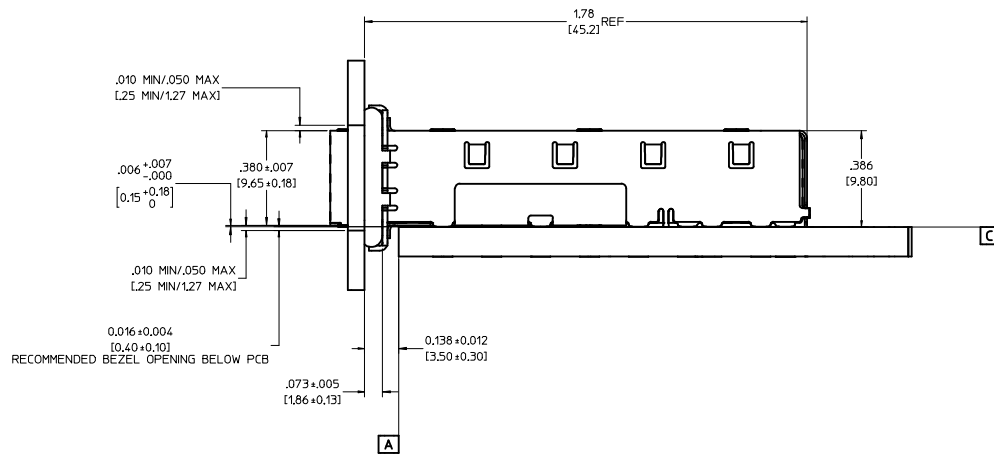
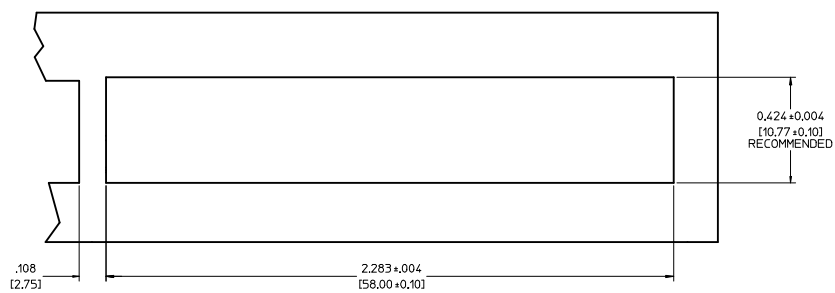


- NOTES:**
- PADS AND VIAS GO TO CHASSIS GROUND, (34 PLACES).
RECOMMENDED PADS TO BE 2mm SQUARE.
 - PLATING OPTIONAL FOR THROUGH HOLES, (12 PLACES).
 - HOLE PATTERN REPEATS FOR EACH PORT,
SPACING BETWEEN PORTS IS 14.25mm.

EC NO: USY2006-0225 DRW:KSIMONSO06/01/24 CHKD:BRUSSELL2006/01/24 APPR:BRUSSELL2006/01/25	QUALITY SYMBOLS	GENERAL TOLERANCES (UNLESS SPECIFIED)	SCALE 6:1	DESIGN UNITS METRIC	THIRD ANGLE PROJECTION	REVISE ON CAD ONLY
	0 0	4 PLACES ± --- ± --- 3 PLACES ± --- ± .005 2 PLACES ± 0.13 ± .01 1 PLACE ± 0.25 ± --- ANGULAR ± 1 °	DIMENSION STYLE IN/MM		TITLE 1X4 SFP CAGE ASSEMBLY, FRAME W/ TABS, W/ 0.090 OD GASKET	
			DRAFT WHERE APPLICABLE MUST REMAIN WITHIN DIMENSIONS		MOLEX INCORPORATED	
	DESCRIPTION	APPROVED BY DATE BRUSSELL 2005/04/07		DRAWN BY DATE KSIMONSO 2005/04/07		SHEET NO. 2 OF 4

20 | 19 | 18 | 17 | 16 | 15 | 14 | 13 | 12 | 11 | 74728 | 9 | 8 | 7 | 6 | 5 | 4 | 3 | 2 | 1

BEZEL AND BOARD POSITION DIMENSIONS FOR SINGLE SIDE MOUNTING



EC NO: USY2006-0225 DRW: KKSIMONSON006/01/24 CHKD: BRUSSELL2006/01/24 APPR: BRUSSELL2006/01/25 B	QUALITY SYMBOLS -0 -0 DESCRIPTION REV	GENERAL TOLERANCES (UNLESS SPECIFIED)		SCALE 4:1	DESIGN UNITS METRIC	THIRD ANGLE PROJECTION	REVISE ON CAD ONLY		
		4 PLACES ± --- ± --- 3 PLACES ± --- ± .005 2 PLACES ± 0.13 ± .01 1 PLACE ± 0.25 ± ---	.mm .INCH DIMENSION STYLE IN/MM	DRAWN BY KSIMONSO	DATE 2005/04/07	TITLE 1X4 SFP CAGE ASSEMBLY, FRAME W/ TABS, W/ 0.090 OD GASKET			
		ANGULAR ± 1 °		CHECKED BY BRUSSELL	DATE 2005/04/07	MOLEX INCORPORATED			
		DRAFT WHERE APPLICABLE MUST REMAIN WITHIN DIMENSIONS		APPROVED BY BRUSSELL	DATE 2005/04/07	MATERIAL NO. 747280417	DOCUMENT NO. SD-74728-417	SHEET NO. 3 OF 4	

THIS DRAWING CONTAINS INFORMATION THAT IS PROPRIETARY TO MOLEX INCORPORATED AND SHOULD NOT BE USED WITHOUT WRITTEN PERMISSION

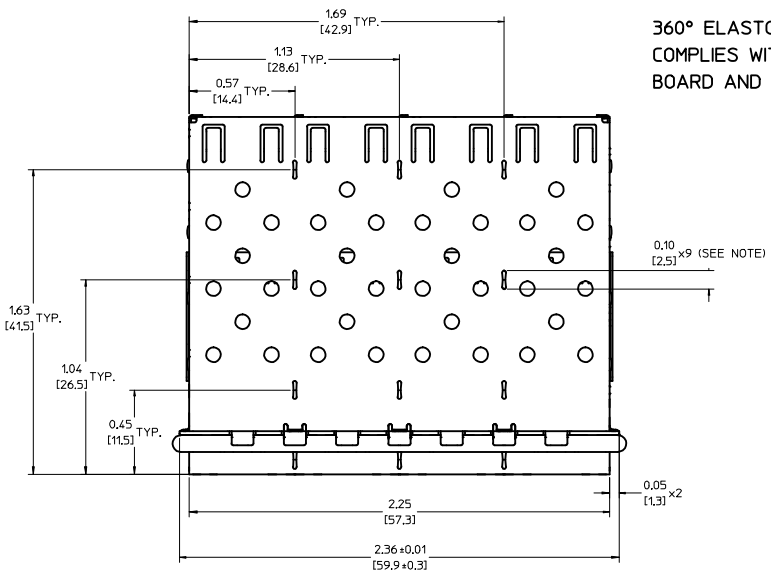
19 | 18 | 17 | 16 | 15 | 14 | 13 | 12 | 11 | 10 | 9 | 8 | 7 | 6 | 5 | 4 | 3 | 2 | 1

20 | 19 | 18 | 17 | 16 | 15 | 14 | 13 | 12 | 11 | 74728 | 9 | 8 | 7 | 6 | 5 | 4 | 3 | 2 | 1

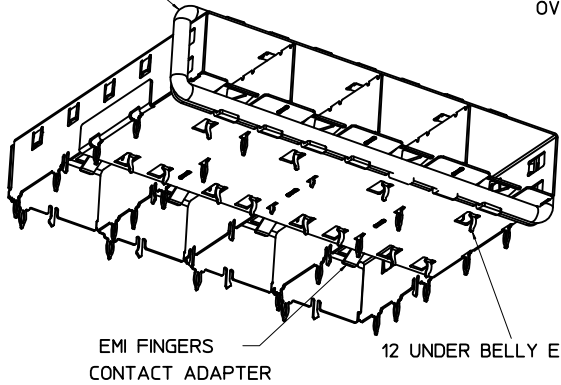
DATE	REV	CHANGES	COMMENTS
2005/04/07	A	INITIAL RELEASE	N/A
2006/01/20	B	MODIFIED NOTES	DOCUMENT CHANGE ONLY

EC NO: USY2006-0225 DRW:KSIMONSON006/01/24 CHK:D:BRUSSELL2006/01/24 APPR:BRUSSELL2006/01/25 B	QUALITY SYMBOLS	GENERAL TOLERANCES (UNLESS SPECIFIED)	SCALE 1:1	DESIGN UNITS METRIC	THIRD ANGLE PROJECTION	REVISE ON CAD ONLY																											
	▼ -0 ▽ -0	<table border="1"> <thead> <tr> <th></th> <th>mm</th> <th>INCH</th> </tr> </thead> <tbody> <tr> <td>4 PLACES</td> <td>± .---</td> <td>± .---</td> </tr> <tr> <td>3 PLACES</td> <td>± .---</td> <td>± .005</td> </tr> <tr> <td>2 PLACES</td> <td>± 0.13</td> <td>± .01</td> </tr> <tr> <td>1 PLACE</td> <td>± 0.25</td> <td>± .---</td> </tr> </tbody> </table>		mm	INCH	4 PLACES	± .---	± .---	3 PLACES	± .---	± .005	2 PLACES	± 0.13	± .01	1 PLACE	± 0.25	± .---	<table border="1"> <thead> <tr> <th colspan="2">DIMENSION STYLE</th> </tr> <tr> <th>IN/MM</th> <th>DATE</th> </tr> </thead> <tbody> <tr> <td>DRAWN BY</td> <td>2005/04/07</td> </tr> <tr> <td>CHECKED BY</td> <td>2005/04/07</td> </tr> <tr> <td>APPROVED BY</td> <td>2005/04/07</td> </tr> </tbody> </table>	DIMENSION STYLE		IN/MM	DATE	DRAWN BY	2005/04/07	CHECKED BY	2005/04/07	APPROVED BY	2005/04/07	TITLE 1X4 SFP CAGE ASSEMBLY, FRAME W/ TABS, W/ 0.090 OD GASKET	MOLEX INCORPORATED	MATERIAL NO. 747280417	DOCUMENT NO. SD-74728-417	SHEET NO. 4 OF 4
			mm	INCH																													
		4 PLACES	± .---	± .---																													
3 PLACES	± .---	± .005																															
2 PLACES	± 0.13	± .01																															
1 PLACE	± 0.25	± .---																															
DIMENSION STYLE																																	
IN/MM	DATE																																
DRAWN BY	2005/04/07																																
CHECKED BY	2005/04/07																																
APPROVED BY	2005/04/07																																
ANGULAR ± 1 °	DRAFT WHERE APPLICABLE MUST REMAIN WITHIN DIMENSIONS	THIS DRAWING CONTAINS INFORMATION THAT IS PROPRIETARY TO MOLEX INCORPORATED AND SHOULD NOT BE USED WITHOUT WRITTEN PERMISSION																															
DESCRIPTION																																	
REV																																	

19 | 18 | 17 | 16 | 15 | 14 | 13 | 12 | 11 | 10 | 9 | 8 | 7 | 6 | 5 | 4 | 3 | 2 | 1

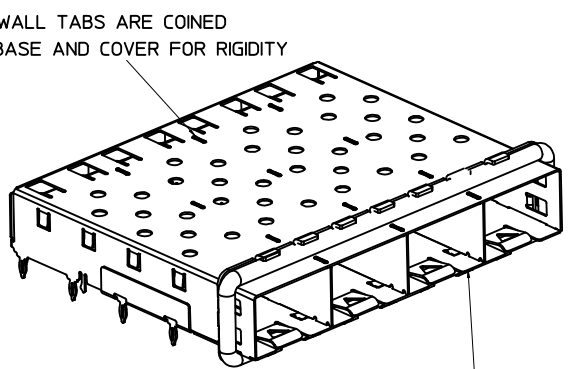


360° ELASTOMER GASKET
COMPLIES WITH (SFP) MSA
BOARD AND BEZEL LOCATIONS



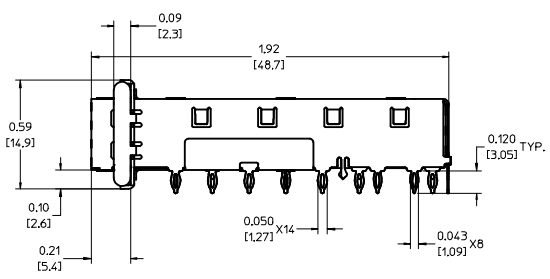
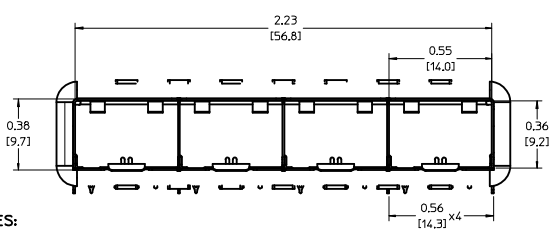
EMI FINGERS
CONTACT ADAPTER

12 UNDER BELLY EMI PINS



INNER WALL TABS ARE COINED
OVER BASE AND COVER FOR RIGIDITY

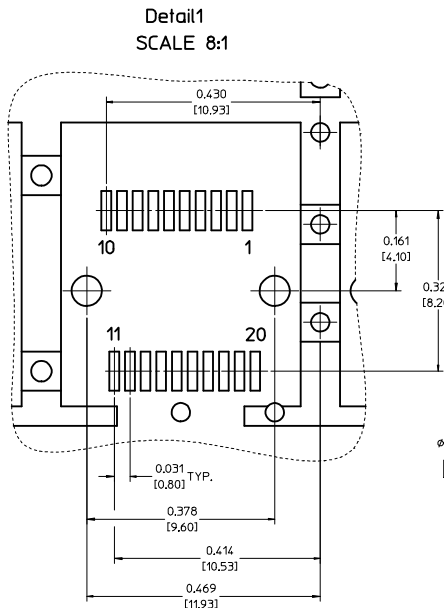
DIMENSIONS OF EACH INNER CAGE DESIGNED
TO FUNCTION WITH SMALL FORM-FACTOR
PLUGGABLE (SFP) TRANSCEIVER



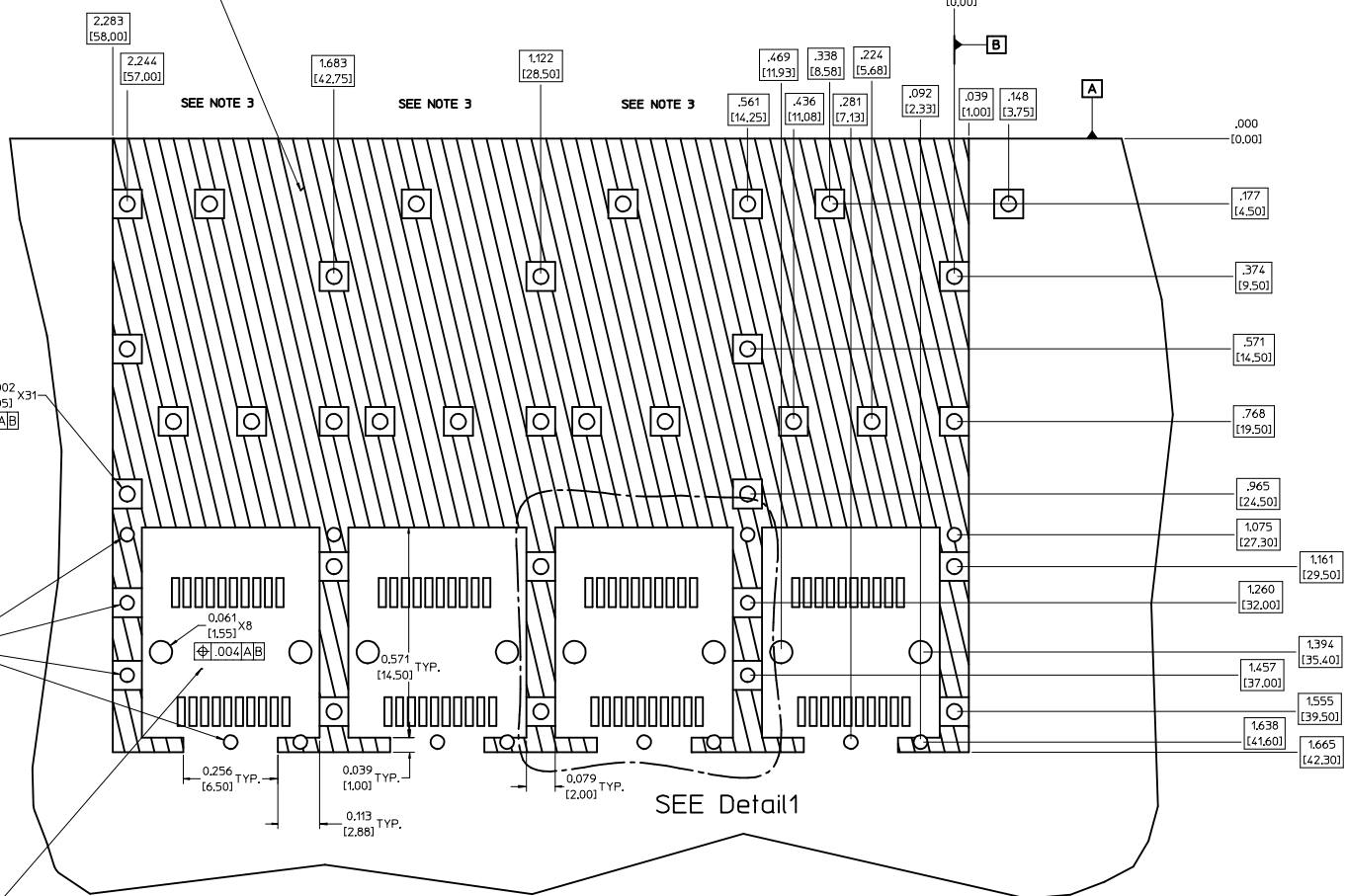
- NOTES:
- PRESS FIT LEGS 0.120" LONG-
0.062 [1.57] MINIMUM PCB THICKNESS. FOR SINGLE SIDED USE ONLY.
 - MATERIAL: COPPER ALLOY
PLATING: NONE
 - NOTE: A PRE-PLATED NICKEL VERSION IS AVAILABLE.
REFER TO DOCUMENT SD-74728-420
 - REFERENCE DOCUMENTS:
PRODUCT SPECIFICATION: PS-74728-000
COSMETIC SPECIFICATIONS: WI-HP-7-2774 AND WI-HPA-7-0093
TEST SUMMARY: TS-74728-0415
 - MATES WITH SERIES 74728. LIGHT PIPE COVER ASSEMBLY.
 - THIS PART MEETS THE RESTRICTION OF HAZARDOUS SUBSTANCES IN
ELECTRICAL AND ELECTRONIC EQUIPMENT (ROHS) DIRECTIVE (2002/95/EC).

EC NO: USY2006-0225 DRN:KSMONSON006/0124 CHKD:BRUSSELL2006/0124 APPR:BRUSSELL2006/0125	QUALITY SYMBOLS -0 -0	GENERAL TOLERANCES (UNLESS SPECIFIED) .mm INCH		SCALE 3:1	DESIGN UNITS METRIC	THIRD ANGLE PROJECTION	REVISE ON CAD ONLY		
		4 PLACES ± --- ± --- 3 PLACES ± --- ± .005 2 PLACES ± 0.13 ± .01 1 PLACE ± 0.25 ± ---	DIMENSION STYLE IN/MM	DRAWN BY KSMONSO	DATE 2005/04/07	TITLE 1X4 SFP CAGE ASSEMBLY, FRAME W/ TABS, W/ 0.090 OD GASKET			
		ANGULAR ± 1 °	CHECKED BY BRUSSELL	DATE 2005/04/07	MOLEX INCORPORATED				
		DRAFT WHERE APPLICABLE MUST REMAIN WITHIN DIMENSIONS	APPROVED BY BRUSSELL	DATE 2005/04/07	MATERIAL NO. 747280417	DOCUMENT NO. SD-74728-417	SHEET NO. 1 OF 4	THIS DRAWING CONTAINS INFORMATION THAT IS PROPRIETARY TO MOLEX INCORPORATED AND SHOULD NOT BE USED WITHOUT WRITTEN PERMISSION	

PCB LAYOUT FOR SINGLE SIDE MOUNTING



CROSS-HATCHED AREA DENOTES COMPONENT AND TRACE KEEP-OUT (EXCEPT CHASSIS GROUND)



$\phi 0.037 \pm 0.002$
 $\phi 0.95 \pm 0.05$
 $\phi .004 [A/B]$
SMALLER HOLE ON THESE FOUR ROWS ONLY

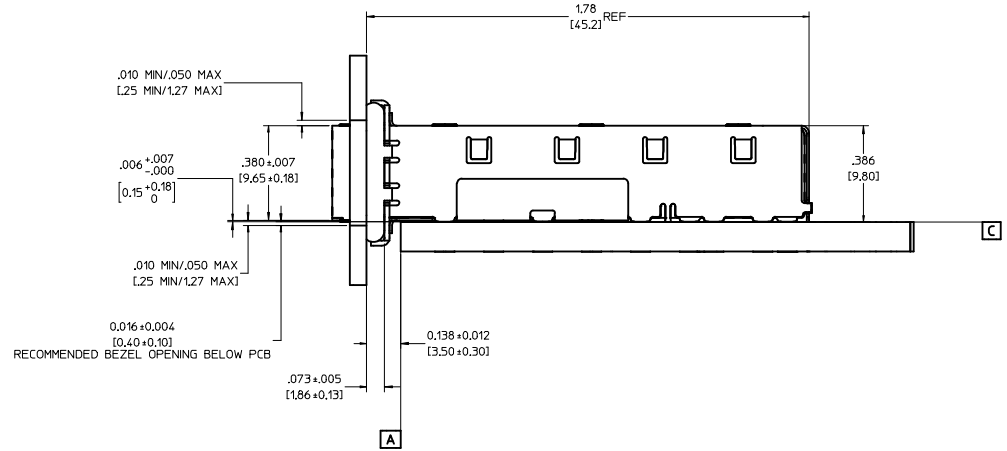
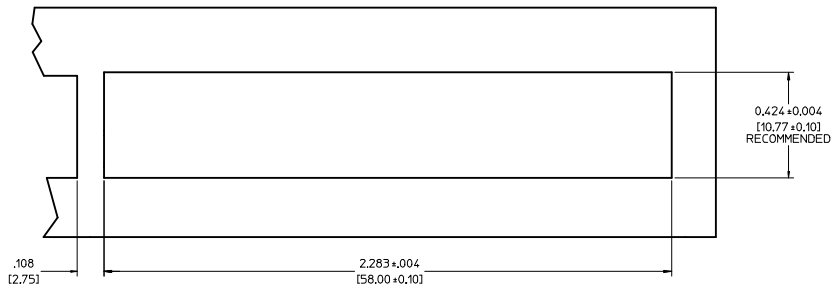
THIS AREA DENOTES COMPONENT KEEP-OUT (TRACES ALLOWED)

- NOTES:**
- PADS AND VIAS GO TO CHASSIS GROUND, (34 PLACES). RECOMMENDED PADS TO BE 2mm SQUARE.
 - PLATING OPTIONAL FOR THROUGH HOLES, (12 PLACES).
 - HOLE PATTERN REPEATS FOR EACH PORT, SPACING BETWEEN PORTS IS 14.25mm.

EC NO: USY2006-0225 DRW:KSIMONSON006/01/24 CHK:BRUSSELL2006/01/24 APPR:BRUSSELL2006/01/25	QUALITY SYMBOLS	GENERAL TOLERANCES (UNLESS SPECIFIED)	SCALE 6:1	DESIGN UNITS METRIC	THIRD ANGLE PROJECTION	REVISE ON CAD ONLY
	0 0	4 PLACES ± --- ± --- 3 PLACES ± --- ± .005 2 PLACES ± 0.13 ± .01 1 PLACE ± 0.25 ± --- ANGULAR ± 1 °	DIMENSION STYLE IN/MM		TITLE 1X4 SFP CAGE ASSEMBLY, FRAME W/ TABS, W/ 0.090 OD GASKET	
			DRAWN BY KSIMONSO		DATE 2005/04/07	
	DRAFT WHERE APPLICABLE MUST REMAIN WITHIN DIMENSIONS		APPROVED BY BRUSSELL		DATE 2005/04/07	
				DOCUMENT NO. SD-74728-417		SHEET NO. 2 OF 4

20 | 19 | 18 | 17 | 16 | 15 | 14 | 13 | 12 | 11 | 74728 | 9 | 8 | 7 | 6 | 5 | 4 | 3 | 2 | 1

BEZEL AND BOARD POSITION DIMENSIONS FOR SINGLE SIDE MOUNTING



EC NO: USY2006-0225 DRW: KKSIMONSON006/01/24 CHKD: BRUSSELL2006/01/24 APPR: BRUSSELL2006/01/25	QUALITY SYMBOLS -0 -0	GENERAL TOLERANCES (UNLESS SPECIFIED)		SCALE 4:1	DESIGN UNITS METRIC	THIRD ANGLE PROJECTION	REVISE ON CAD ONLY		
		4 PLACES ± --- ± --- 3 PLACES ± --- ± .005 2 PLACES ± 0.13 ± .01 1 PLACE ± 0.25 ± ---	.mm .INCH ± --- ± --- ± .005 ± .01 ± --- ± ---	DIMENSION STYLE IN/MM	DRAWN BY KSIMONSO	DATE 2005/04/07	TITLE 1X4 SFP CAGE ASSEMBLY, FRAME W/ TABS, W/ 0.090 OD GASKET		
		ANGULAR ± 1 °		CHECKED BY BRUSSELL	DATE 2005/04/07	MOLEX INCORPORATED			
		DRAFT WHERE APPLICABLE MUST REMAIN WITHIN DIMENSIONS		APPROVED BY BRUSSELL	DATE 2005/04/07	MATERIAL NO. 747280417	DOCUMENT NO. SD-74728-417	SHEET NO. 3 OF 4	

19 | 18 | 17 | 16 | 15 | 14 | 13 | 12 | 11 | 10 | 9 | 8 | 7 | 6 | 5 | 4 | 3 | 2 | 1

20 | 19 | 18 | 17 | 16 | 15 | 14 | 13 | 12 | 11 | 74728 | 9 | 8 | 7 | 6 | 5 | 4 | 3 | 2 | 1

DATE	REV	CHANGES	COMMENTS
2005/04/07	A	INITIAL RELEASE	N/A
2006/01/20	B	MODIFIED NOTES	DOCUMENT CHANGE ONLY

EC NO: USY2006-0225 DRW:KSIMONSON006/01/24 CHK:D:BRUSSELL2006/01/24 APPR:BRUSSELL2006/01/25 B	QUALITY SYMBOLS	GENERAL TOLERANCES (UNLESS SPECIFIED)	SCALE 1:1	DESIGN UNITS METRIC	THIRD ANGLE PROJECTION	REVISE ON CAD ONLY																				
	▽-0 ▽-0	<table border="1"> <thead> <tr> <th></th> <th>mm</th> <th>INCH</th> </tr> </thead> <tbody> <tr> <td>4 PLACES</td> <td>± .13</td> <td>± .005</td> </tr> <tr> <td>3 PLACES</td> <td>± .13</td> <td>± .01</td> </tr> <tr> <td>2 PLACES</td> <td>± 0.25</td> <td>± .01</td> </tr> <tr> <td>1 PLACE</td> <td>± 0.25</td> <td>± .01</td> </tr> </tbody> </table>		mm	INCH	4 PLACES	± .13	± .005	3 PLACES	± .13	± .01	2 PLACES	± 0.25	± .01	1 PLACE	± 0.25	± .01	<table border="1"> <thead> <tr> <th colspan="2">DIMENSION STYLE</th> </tr> <tr> <th>IN/MM</th> <th>DATE</th> </tr> </thead> <tbody> <tr> <td>IN/MM</td> <td>2005/04/07</td> </tr> </tbody> </table>	DIMENSION STYLE		IN/MM	DATE	IN/MM	2005/04/07	TITLE 1X4 SFP CAGE ASSEMBLY, FRAME W/ TABS, W/ 0.090 OD GASKET	
			mm	INCH																						
	4 PLACES	± .13	± .005																							
3 PLACES	± .13	± .01																								
2 PLACES	± 0.25	± .01																								
1 PLACE	± 0.25	± .01																								
DIMENSION STYLE																										
IN/MM	DATE																									
IN/MM	2005/04/07																									
	DRAFT WHERE APPLICABLE MUST REMAIN WITHIN DIMENSIONS	APPROVED BY BRUSSELL	DATE 2005/04/07	MATERIAL NO. 747280417	DOCUMENT NO. SD-74728-417	SHEET NO. 4 OF 4																				
THIS DRAWING CONTAINS INFORMATION THAT IS PROPRIETARY TO MOLEX INCORPORATED AND SHOULD NOT BE USED WITHOUT WRITTEN PERMISSION																										

19 | 18 | 17 | 16 | 15 | 14 | 13 | 12 | 11 | 10 | 9 | 8 | 7 | 6 | 5 | 4 | 3 | 2 | 1