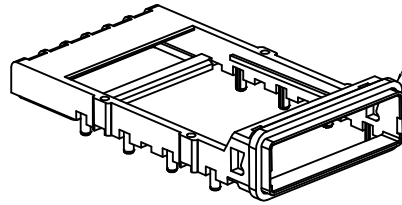
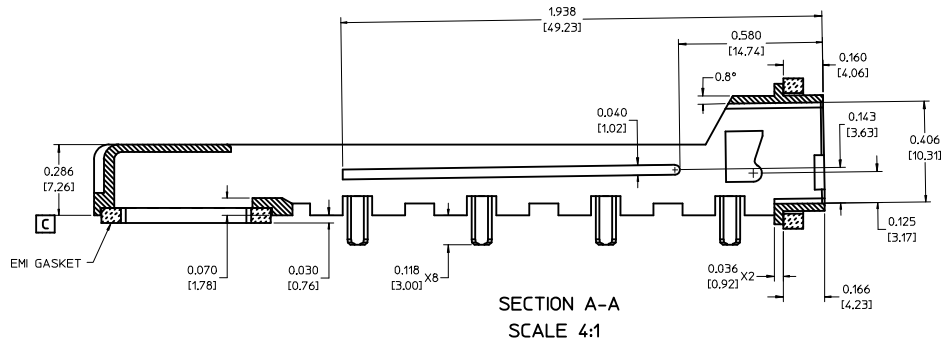
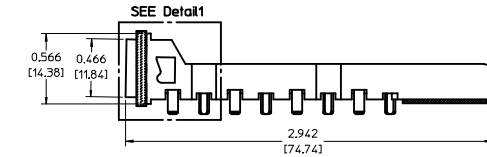
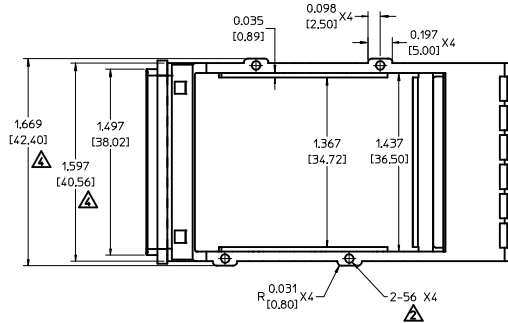
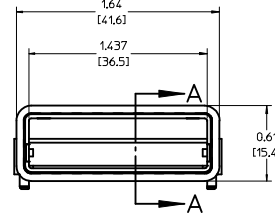


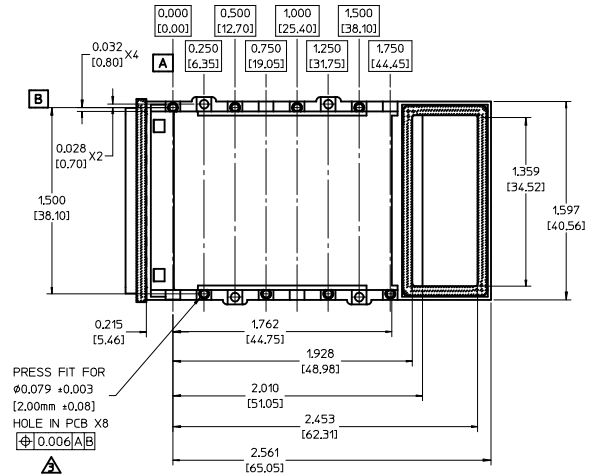
EMI GASKET TO PCB



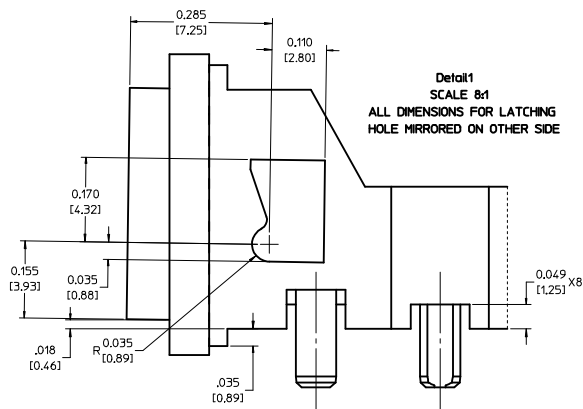
EMI GASKET FOR FRONT PANEL



SECTION A-A
SCALE 4:1



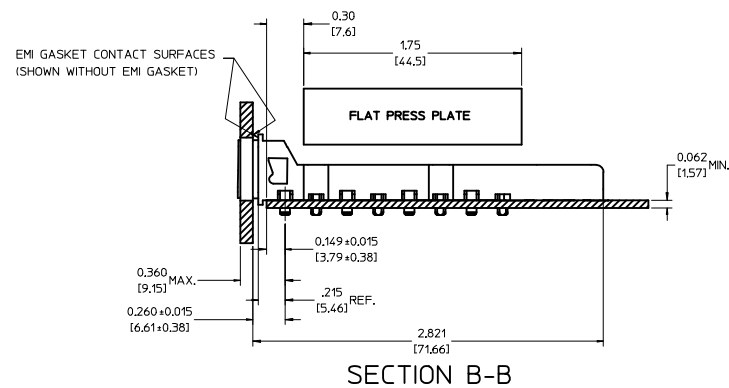
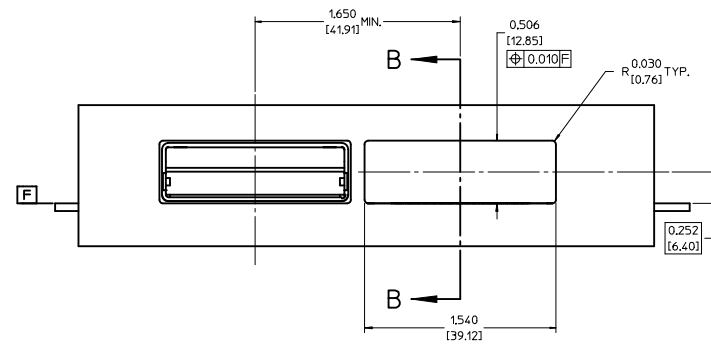
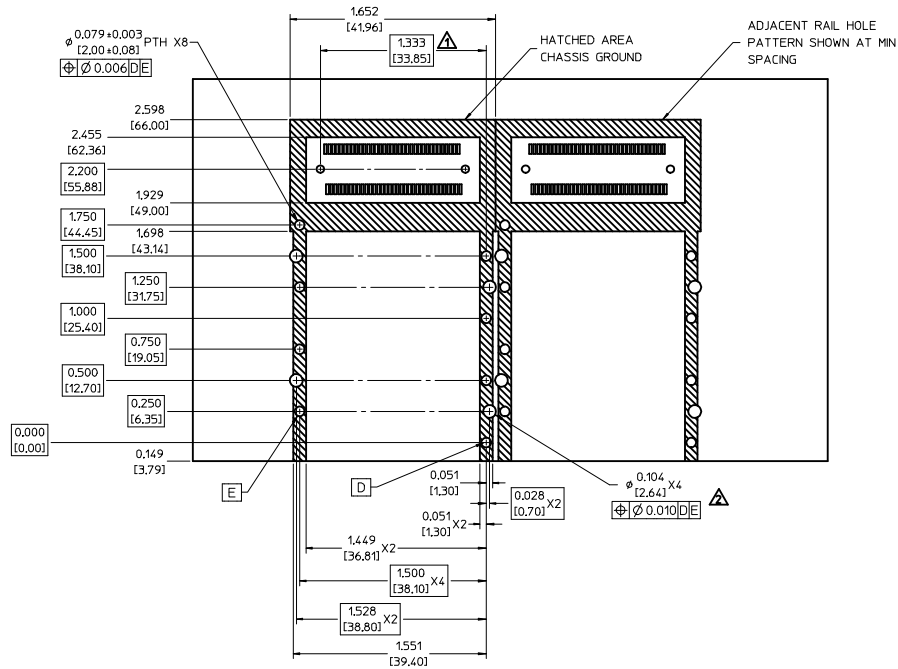
PRESS FIT FOR
Ø0.079 ±0.003
[2.00mm ±0.08]
HOLE IN PCB X8
⌀0.006 [A] B



Detail 1
SCALE 8:1
ALL DIMENSIONS FOR LATCHING
HOLE MIRRORED ON OTHER SIDE

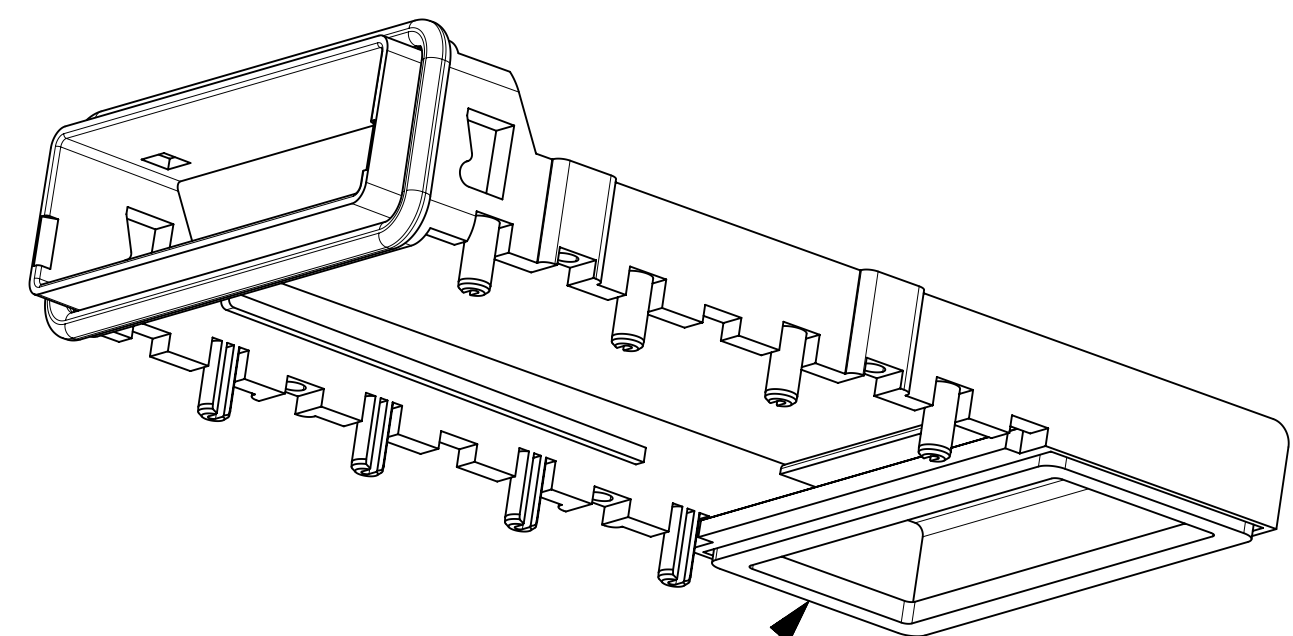
1. MATERIAL: NICKEL PLATED ZINC ALLOY DIECAST
2. HOLE TAPPED FOR 2-56 SCREW. SCREW USE IS OPTIONAL
3. FOR USE WITH HASL, GOLD OR SILVER IMMERSION FINISHED PTH
4. THESE DIMENSIONS EXCEED HSA MAXIMUM.
5. MINIMUM PCB THICKNESS FOR PRESS FIT ON ONE SIDE 0.062 [1.57]
6. MINIMUM PCB THICKNESS FOR BELLY TO BELLY 0.090 [2.29]

EC NO: USY2003-0096 DRAWN: KLOYD 2003/06/23 CHKD: BRUSSELL 2003/06/27 APPR: KLOYD 2003/06/27	QUALITY SYMBOLS	GENERAL TOLERANCES (UNLESS SPECIFIED)	SCALE 2:1	DESIGN UNITS INCH	THIRD ANGLE PROJECTION	REVISE ON CAD ONLY
	-0 -0	4 PLACES ± --- ± --- 3 PLACES ± --- ± .005 2 PLACES ± 0.13 ± 0.10 1 PLACE ± 0.25 ± --- ANGULAR ± 1/2°	DIMENSION STYLE IN/MM		TITLE	
			DRAWN BY DATE KLOYD 2002/05/01		XPAK GUIDE RAIL ASSEMBLY (SALES)	
	A	DESCRIPTION	DRAFT WHERE APPLICABLE MUST REMAIN WITHIN DIMENSIONS		APPROVED BY DATE BRUSSELL 2002/05/01	
THIS DRAWING CONTAINS INFORMATION THAT IS PROPRIETARY TO MOLEX INCORPORATED AND SHOULD NOT BE USED WITHOUT WRITTEN PERMISSION						

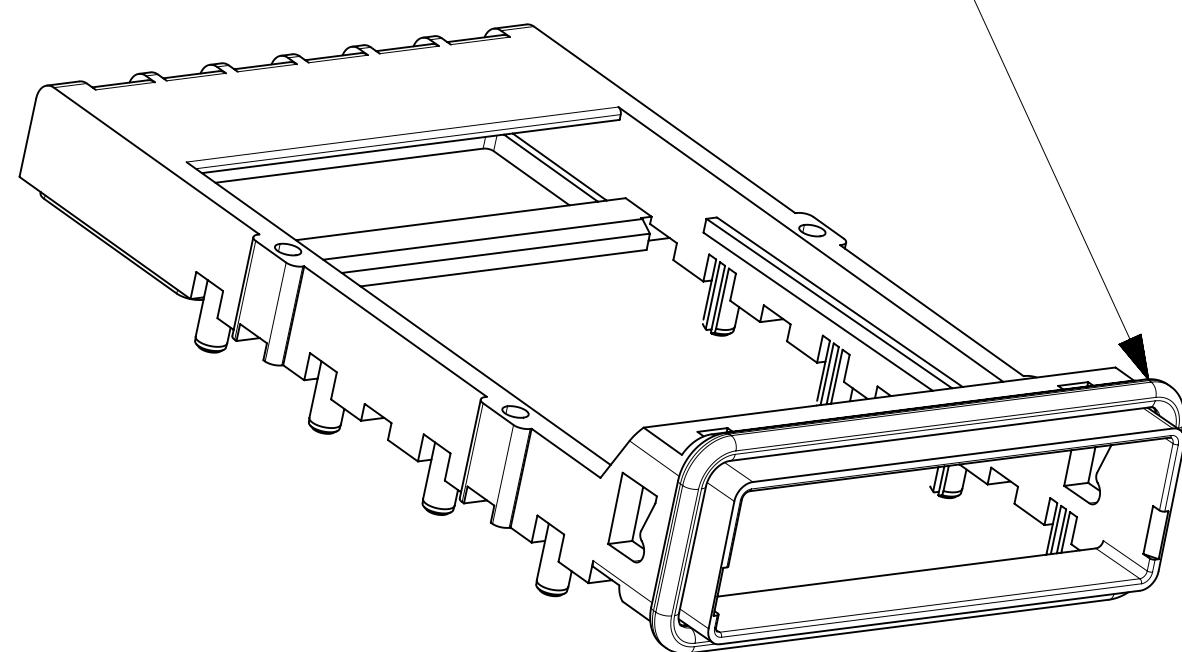


1. SEE DRAWING SD-74441-001 FOR HOST CONNECTOR LAYOUT DETAIL.
2. FINISHED THROUGH HOLE DIAMETER. CAN BE PLATED OR NON-PLATED.
3. PLATED HOLES CAN BE HASL, GOLD OR SILVER IMMERSION.
4. PCB LAYOUT SHOWN IS FOR SINGLE SIDED MOUNTING ONLY.
5. BELLY TO BELLY MOUNTING REQUIRES ABOVE LAYOUT MIRRORED ON OPPOSITE SIDE OF PCB AND THE SECONDARY BEZEL OPENING MUST ACCOMMODATE THE PCB THICKNESS VARIATION.

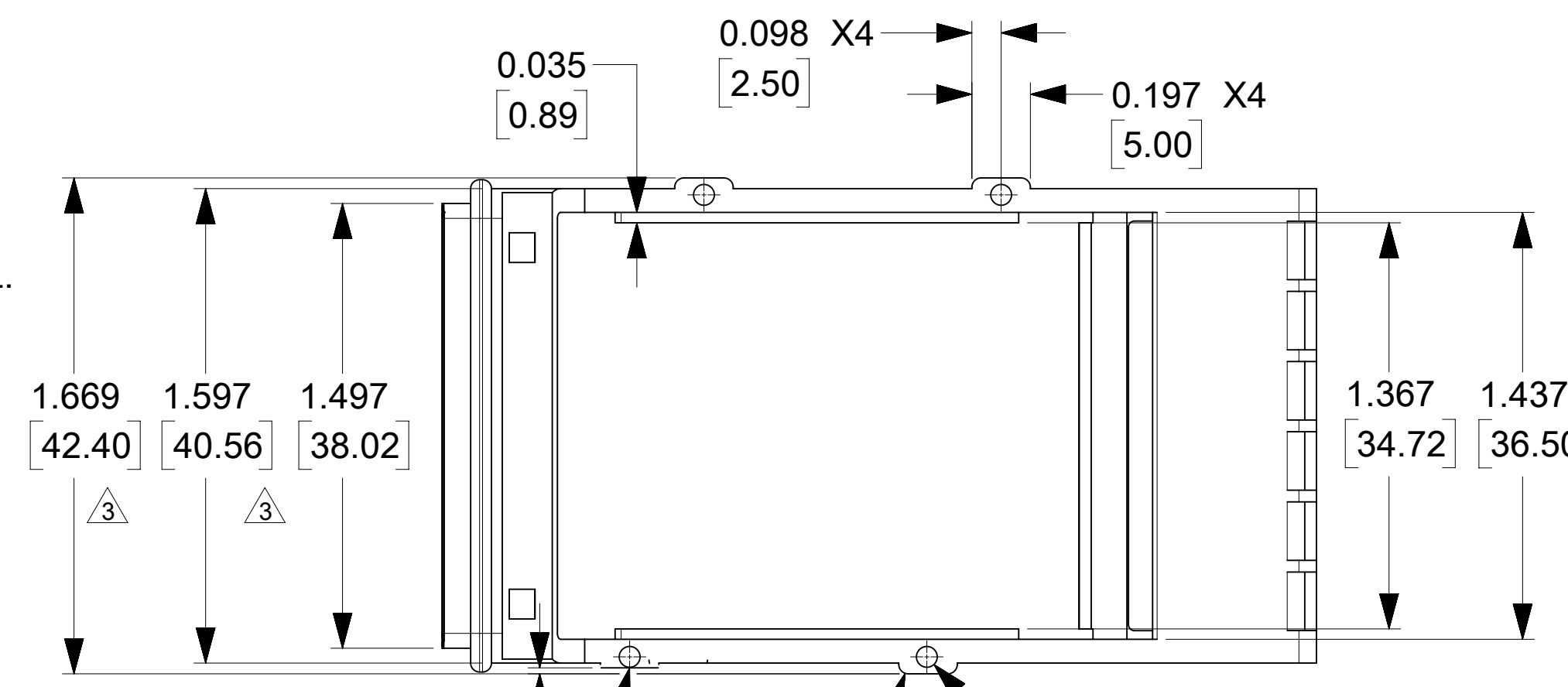
EC NO: USY2003-0096 DRWN: KLOYD 2003/06/23 CHKD: BRUSSELL 2003/06/27 APPR: KLOYD 2003/06/27 A	QUALITY SYMBOLS -0 -0 A	GENERAL TOLERANCES (UNLESS SPECIFIED) .mm INCH 4 PLACES ± --- ± --- 3 PLACES ± --- ± .005 2 PLACES ± 0.13 ± .010 1 PLACE ± 0.25 ± --- ANGULAR ± 1/2° DRAFT WHERE APPLICABLE MUST REMAIN WITHIN DIMENSIONS	SCALE 2:1 DESIGN UNITS INCH DIMENSION STYLE IN/MM DRAWN BY KLOYD DATE 2002/05/01 CHECKED BY BRUSSELL DATE 2002/05/01 APPROVED BY BRUSSELL DATE 2002/05/01	THIRD ANGLE PROJECTION REVISE ON CAD ONLY TITLE XPAK GUIDE RAIL ASSEMBLY (SALES)
		MOLEX INCORPORATED MATERIAL NO. 747320220 DOCUMENT NO. SD-74732-220 SHEET NO. 2 OF 2		
		THIS DRAWING CONTAINS INFORMATION THAT IS PROPRIETARY TO MOLEX INCORPORATED AND SHOULD NOT BE USED WITHOUT WRITTEN PERMISSION		



EMI GASKET TO PCB

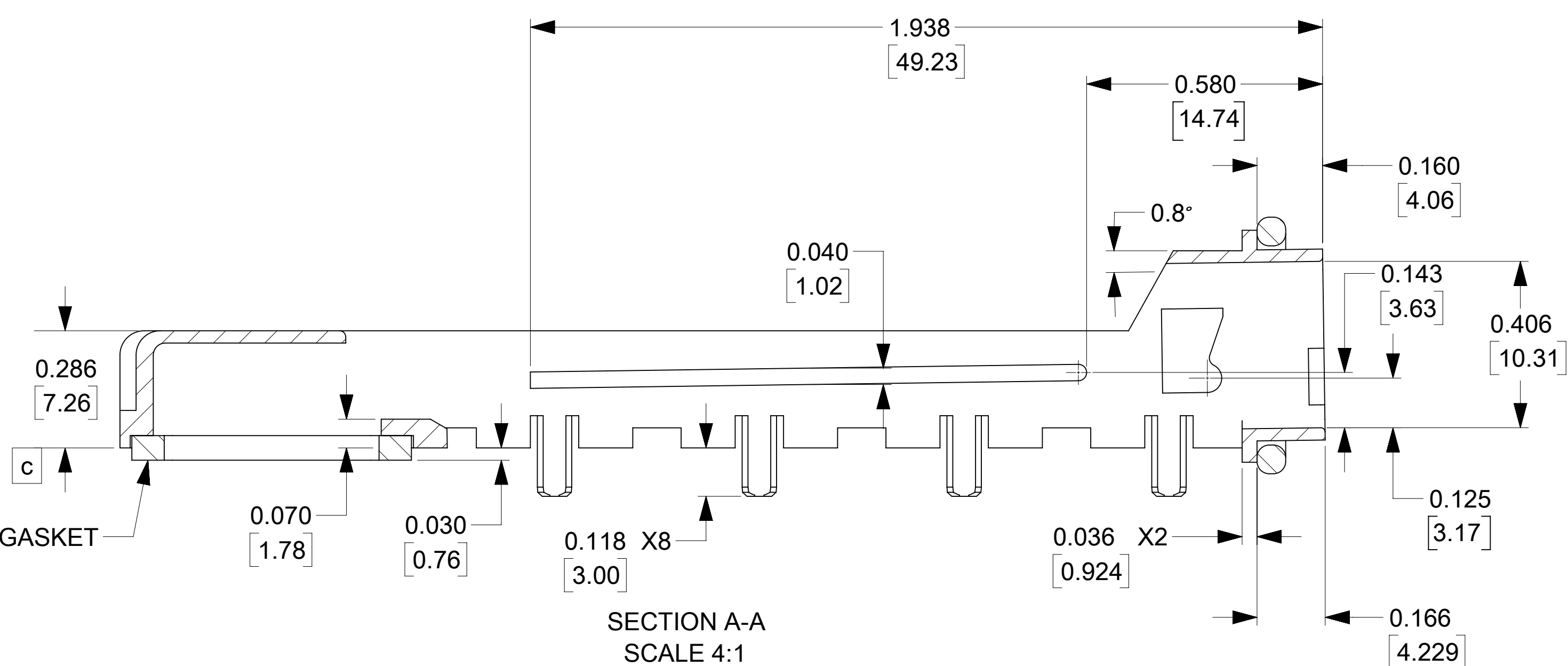
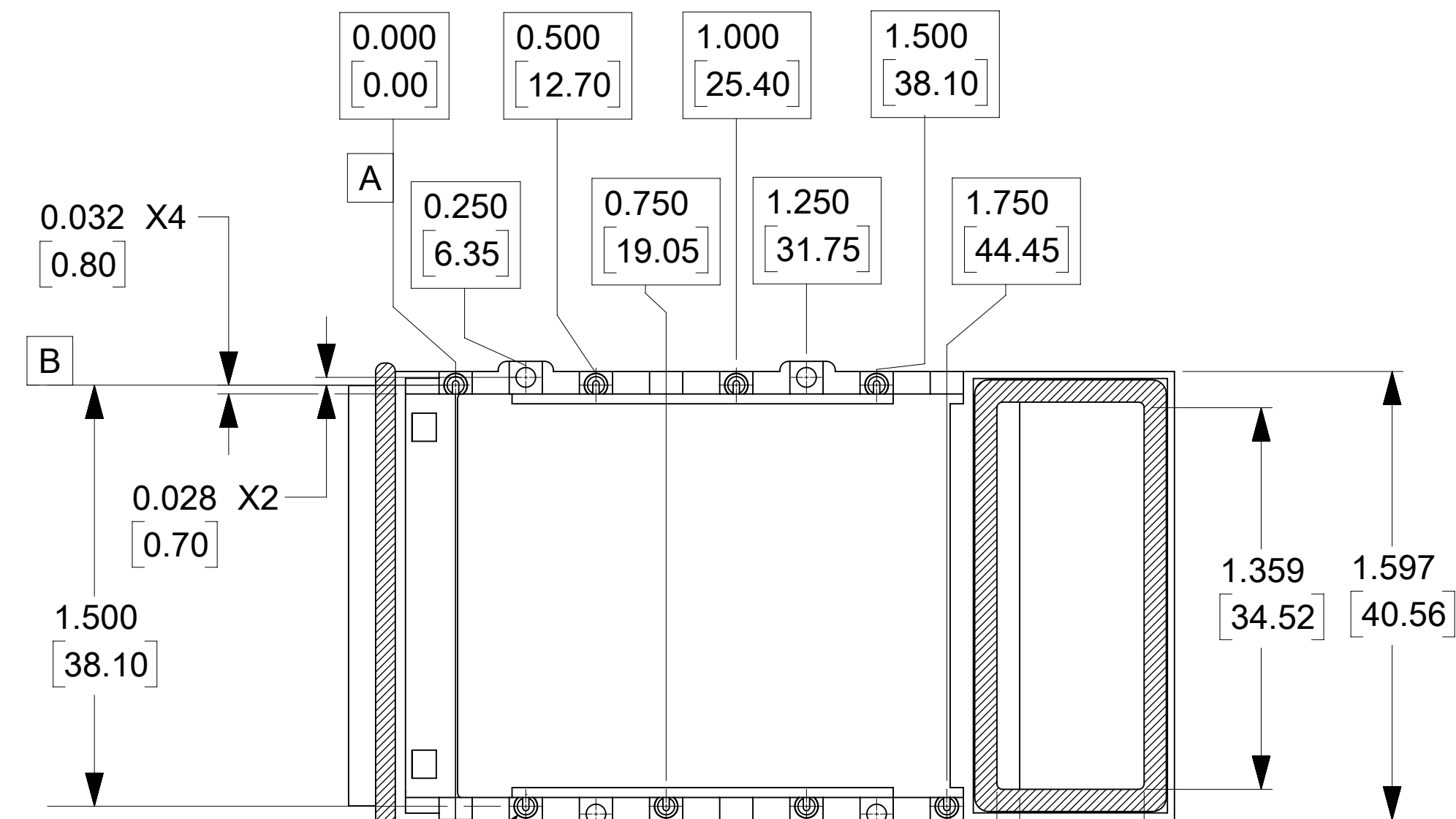
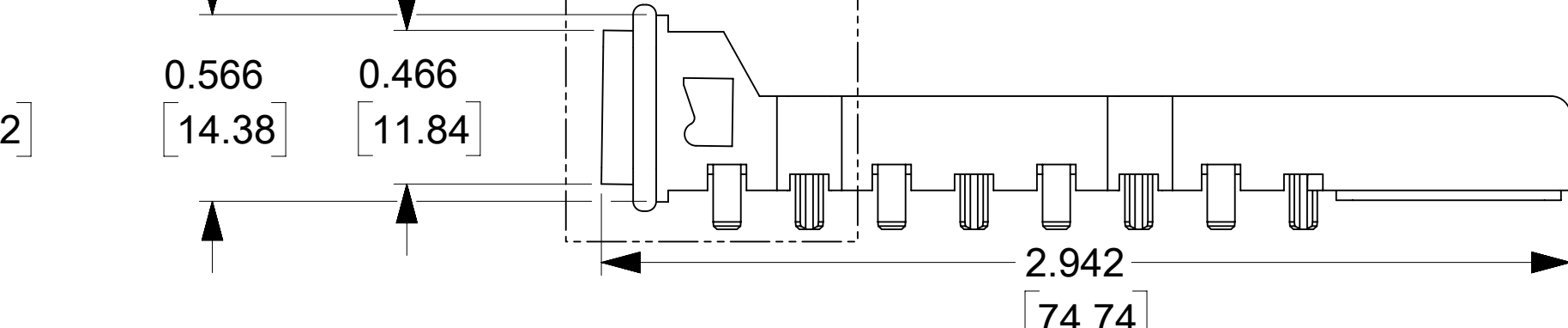


EMI GASKET FOR FRONT PANEL.
THE EMI GASKET MATERIAL IS A ROUND,
COMPLIANT, CONDUCTIVE ELASTOMER THAT
STRETCHES AROUND THE MOUTH OF THE XPAK RAIL.
A BEZEL LOCATED PER THE XPAK MSA WILL
MAKE GROUNDING CONTACT WITH THE GASKET TO
PROVIDE EMI SHIELDING.

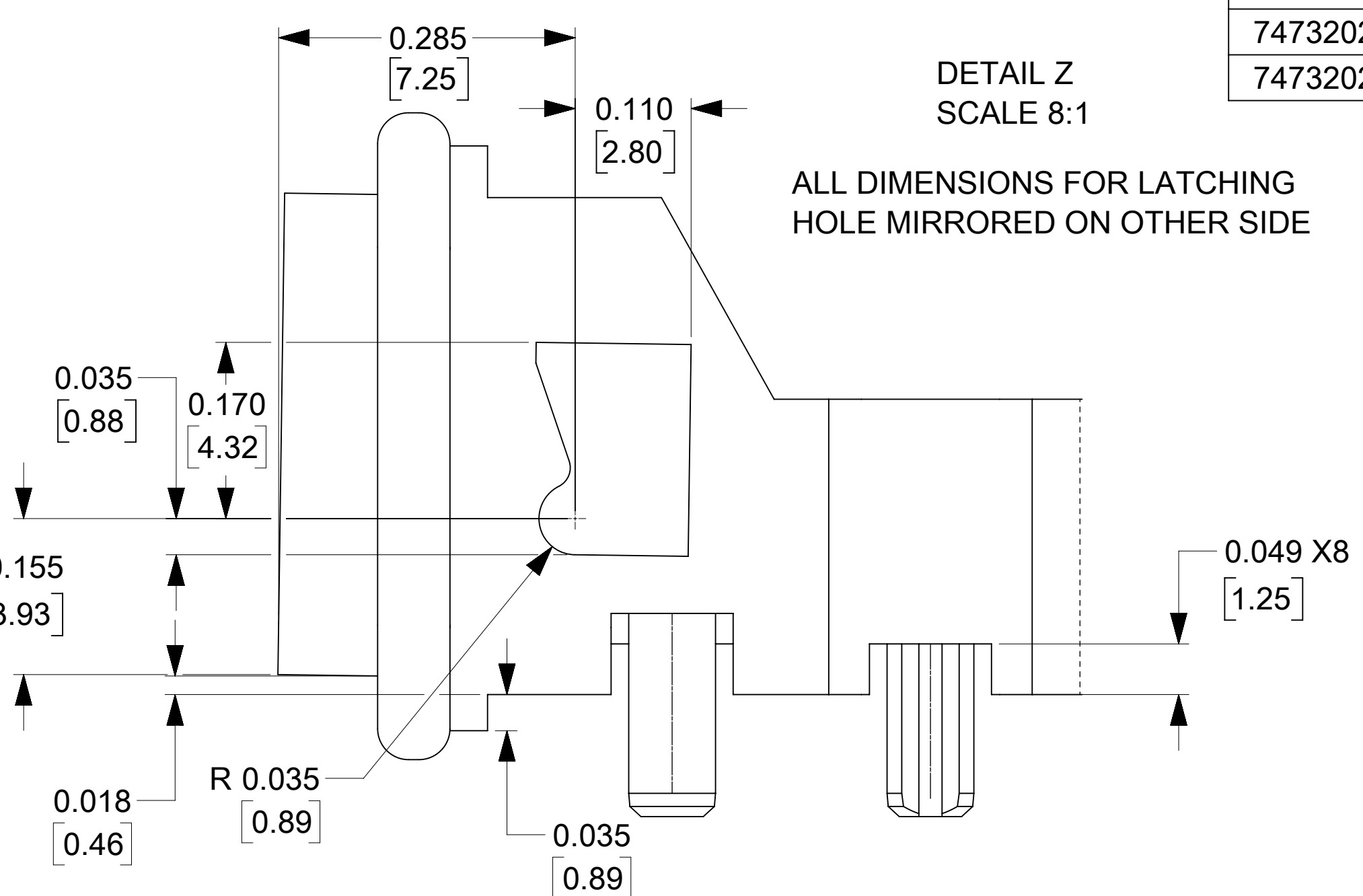


0.20 MILLED (REMOVED)
FROM THIS SURFACE

SEE DETAIL Z



SECTION A-A
SCALE 4:1



DETAIL Z
SCALE 8:1

ALL DIMENSIONS FOR LATCHING
HOLE MIRRORED ON OTHER SIDE

MOLEX P/N	DESCRIPTION
747320221	XPAK RAIL ASSEMBLY - WITH ONE MILLED SIDE AND 0.078 ELASTOMER GASKET
747320222	XPAK RAIL ASSEMBLY - WITH ONE MILLED SIDE AND 0.098 ELASTOMER GASKET
747320223	XPAK RAIL ASSEMBLY - WITH ONE MILLED SIDE AND 0.090 ELASTOMER GASKET

1. MATERIAL: NICKEL PLATED ZINC ALLOY DIECAST
2. FOR USE WITH HASL, GOLD OR SILVER IMMERSION FINISHED PTH
3. THESE DIMENSIONS EXCEED MSA MAXIMUM.
4. MINIMUM PCB THICKNESS FOR PRESS FIT ON ONE SIDE 0.062 [1.57]
5. MINIMUM PCB THICKNESS FOR BELLY TO BELLY 0.090 [2.29]

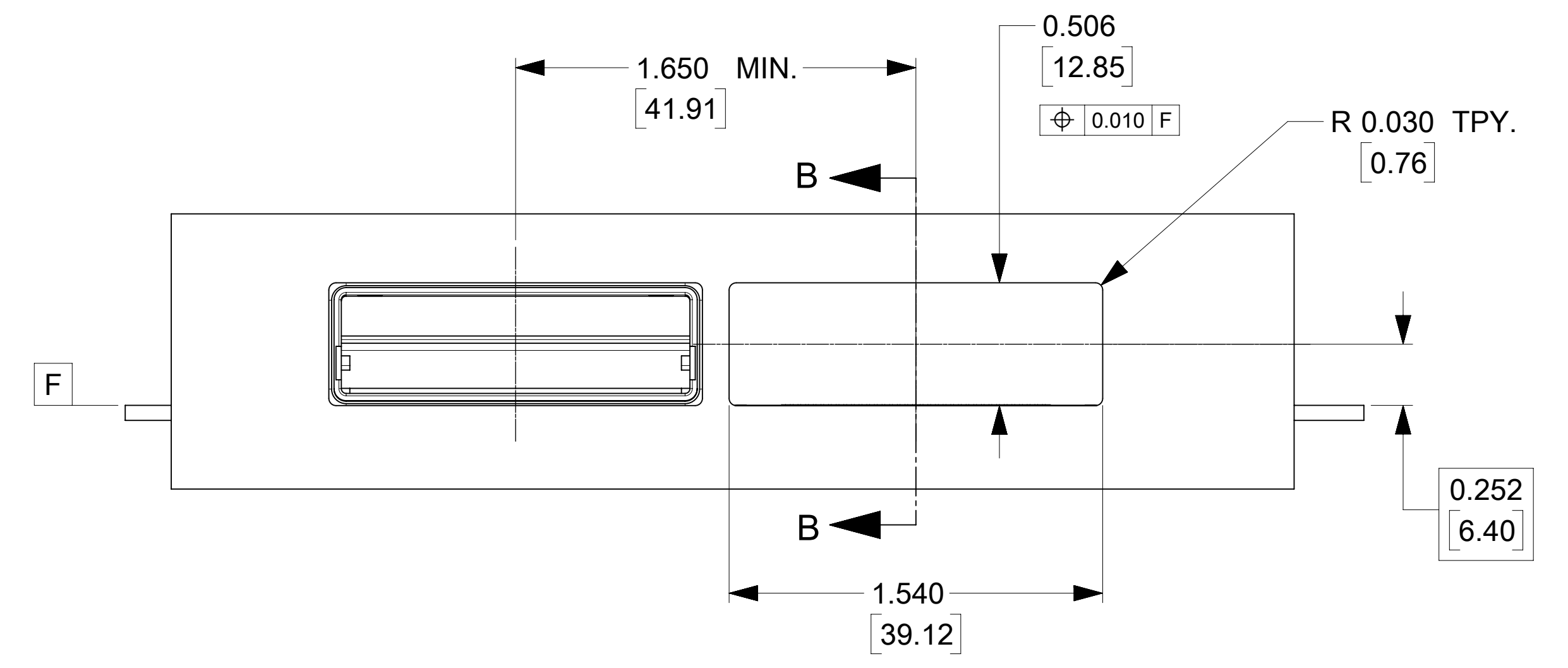
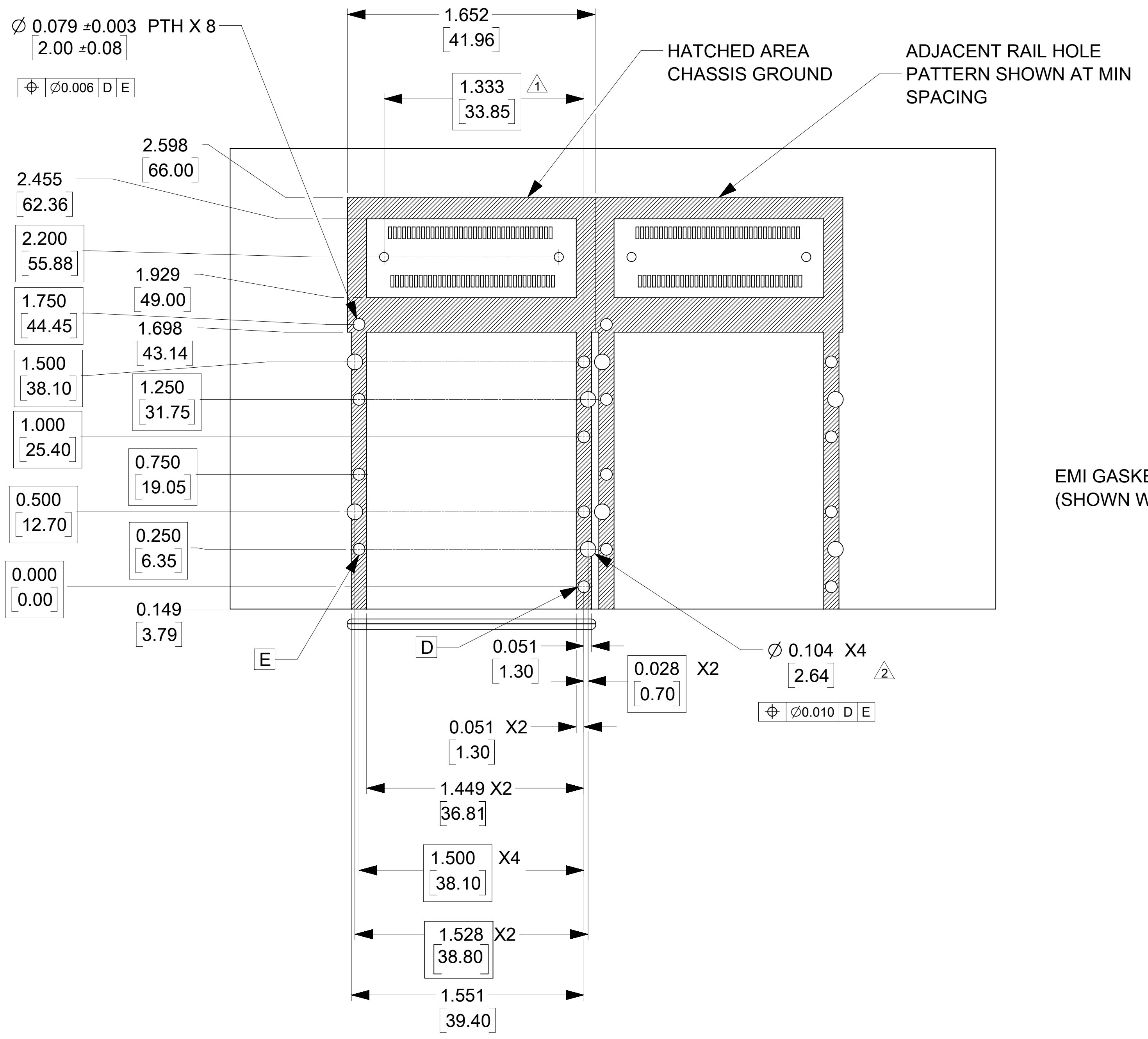
THIS DRAWING CONTAINS INFORMATION THAT IS PROPRIETARY TO MOLEX ELECTRONIC TECHNOLOGIES, LLC AND SHOULD NOT BE USED WITHOUT WRITTEN PERMISSION

DIMENSION UNITS	SCALE	CURRENT REV DESC: OBSOLETE PART NO	
IN/MM	2:1		
GENERAL TOLERANCES (UNLESS SPECIFIED)		EC NO: 625872	
4 PLACES ±	±	DRWN: VLOKESHA	2019/08/13
3 PLACES ±	± 0.005	CHK'D: GB	2019/11/06
2 PLACES ±	± 0.13 ± 0.01	APPR: GGA	2019/11/12
1 PLACE ±	± 0.25 ±	INITIAL REVISION:	
0 PLACES ±	±	DRWN: KLLOYD	2002/05/01
ANGULAR TOL	± 0.5°	APPR: BRUSSELL	2002/05/01
DRAFT WHERE APPLICABLE MUST REMAIN WITHIN DIMENSIONS		THIRD ANGLE PROJECTION	DRAWING SERIES
		D-SIZE	74732
DOCUMENT NUMBER		MATERIAL NUMBER	CUSTOMER
SD-74732-221		SEE CHART	GENERAL MARKET
DOC TYPE	DOC PART	REVISION	SHEET NUMBER
PSD	001	F1	1 OF 2

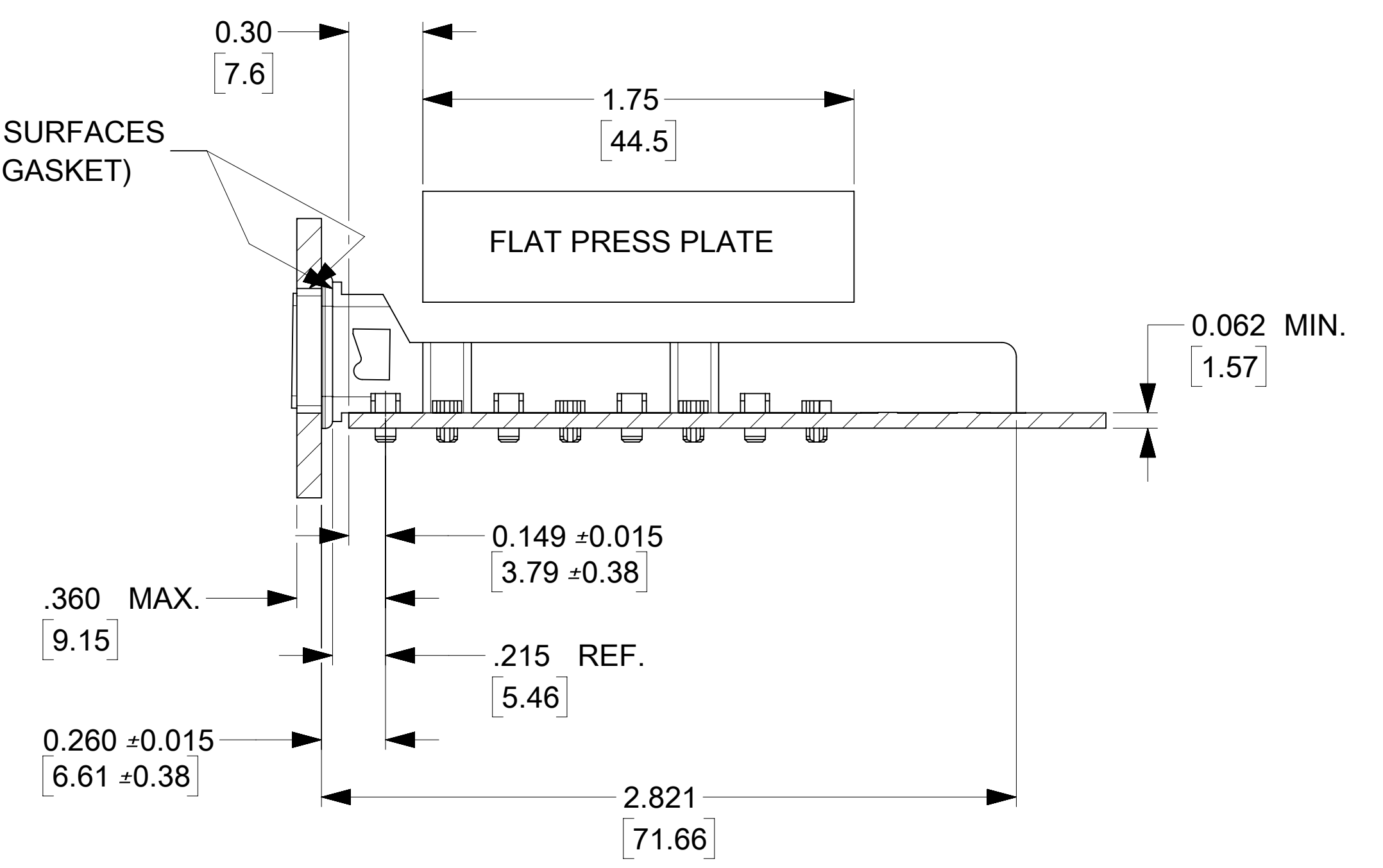
molex

XPAK GUIDE RAIL
ASSEMBLY (SALES) W/ MILLED SIDE

PRODUCT CUSTOMER DRAWING



EMI GASKET CONTACT SURFACES
(SHOWN WITHOUT EMI GASKET)



SECTION B-B

1. SEE DRAWING SD-74441-001 FOR HOST CONNECTOR LAYOUT DETAIL.
2. THESE HOLES CAN BE OMITTED, THEY ARE NOT NEEDED FOR THIS RAIL VERSION.
3. PLATED HOLES CAN BE HASL, GOLD OR SILVER IMMERSION.
4. PCB LAYOUT SHOWN IS FOR SINGLE SIDED MOUNTING ONLY.
5. BELLY TO BELLY MOUNTING REQUIRES ABOVE LAYOUT MIRRORED ON OPPOSITE SIDE OF PCB AND THE SECONDARY BEZEL OPENING MUST ACCOMODATE THE PCB THICKNESS VARIATION.

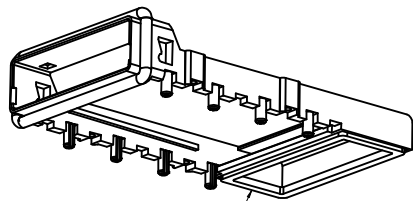
THIS DRAWING CONTAINS INFORMATION THAT IS PROPRIETARY TO MOLEX ELECTRONIC TECHNOLOGIES, LLC AND SHOULD NOT BE USED WITHOUT WRITTEN PERMISSION											
DIMENSION UNITS		SCALE		CURRENT REV DESC: OBSOLETE PART NO							
IN/MM		2:1									
GENERAL TOLERANCES (UNLESS SPECIFIED)											
		MM		INCH		EC NO: 625872					
4 PLACES		±		±		DRWN: VLOKESHA			2019/08/13		
3 PLACES		±		± 0.005		CHK'D: GB			2019/11/06		
2 PLACES		± 0.13		± 0.01		APPR: GGA			2019/11/12		
1 PLACE		± 0.25		±		INITIAL REVISION:					
0 PLACES		±		±		DRWN: KLLOYD			2002/05/01		
ANGULAR TOL		± 0.5°		±		APPR: BRUSSELL			2002/05/01		
DRAFT WHERE APPLICABLE MUST REMAIN WITHIN DIMENSIONS				THIRD ANGLE PROJECTION		DRAWING		SERIES		MATERIAL NUMBER	
						D-SIZE		74732		SEE CHART	
DOCUMENT STATUS				P1		RELEASE DATE		2019/11/12 07:19:25		CUSTOMER	
										GENERAL MARKET	
										SHEET NUMBER	
										2 OF 2	

molex

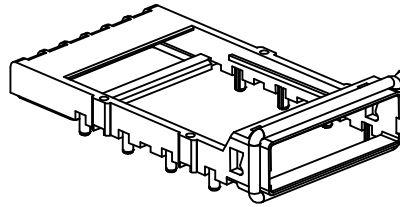
XPAK GUIDE RAIL
ASSEMBLY (SALES) W/ MILLED SIDE

PRODUCT CUSTOMER DRAWING

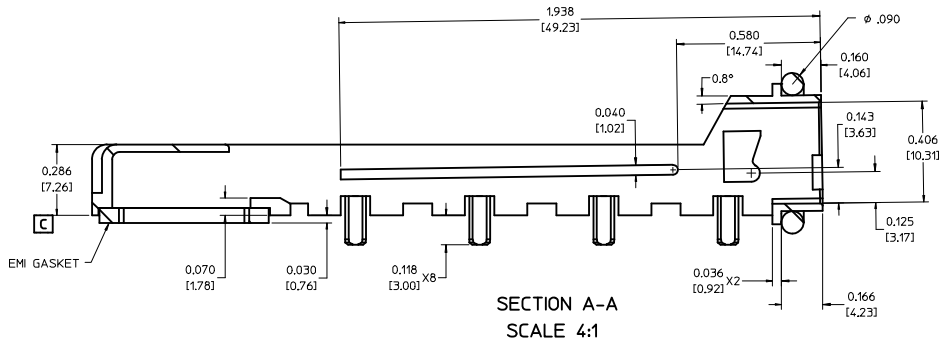
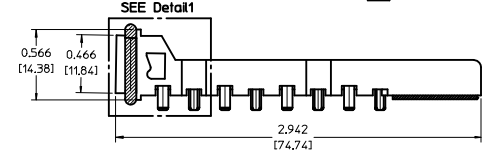
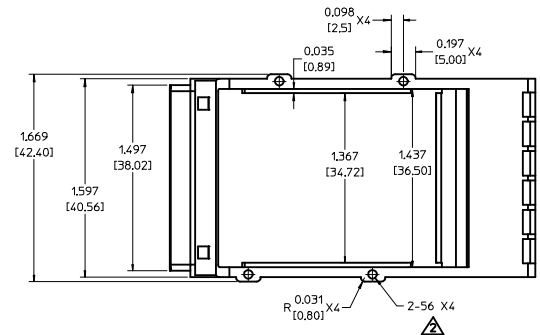
DOCUMENT NUMBER: SD-74732-221
DOC TYPE: PSD
DOC PART: 001
REVISION: F1



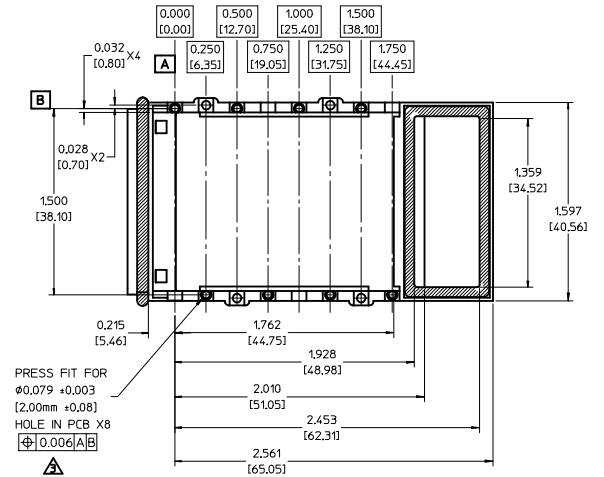
EMI GASKET TO PCB



EMI GASKET FOR FRONT PANEL

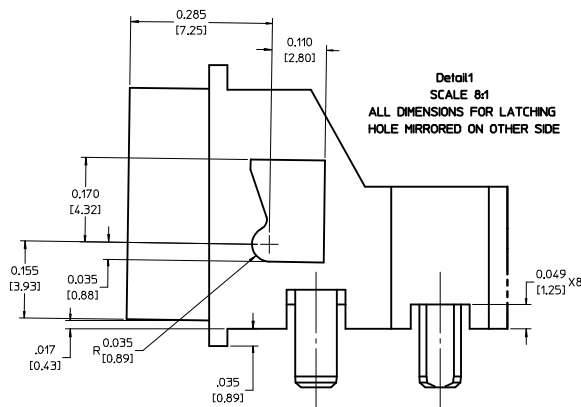


SECTION A-A
SCALE 4:1



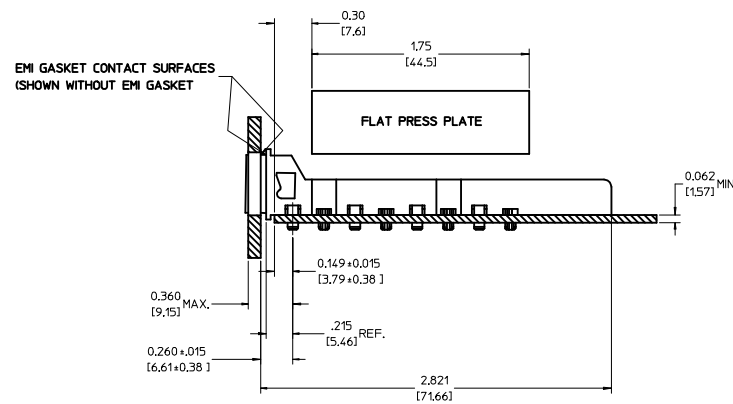
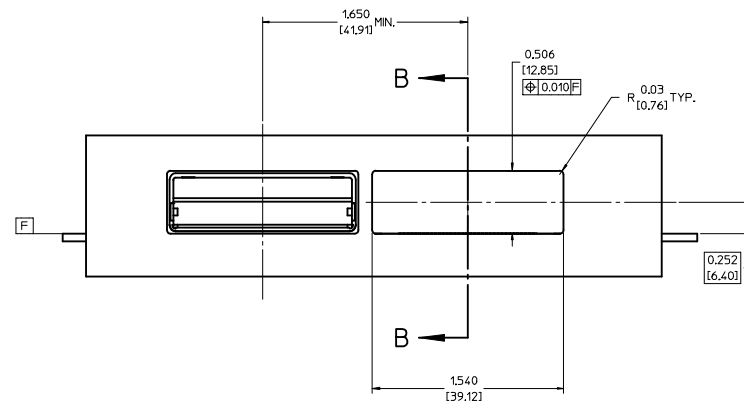
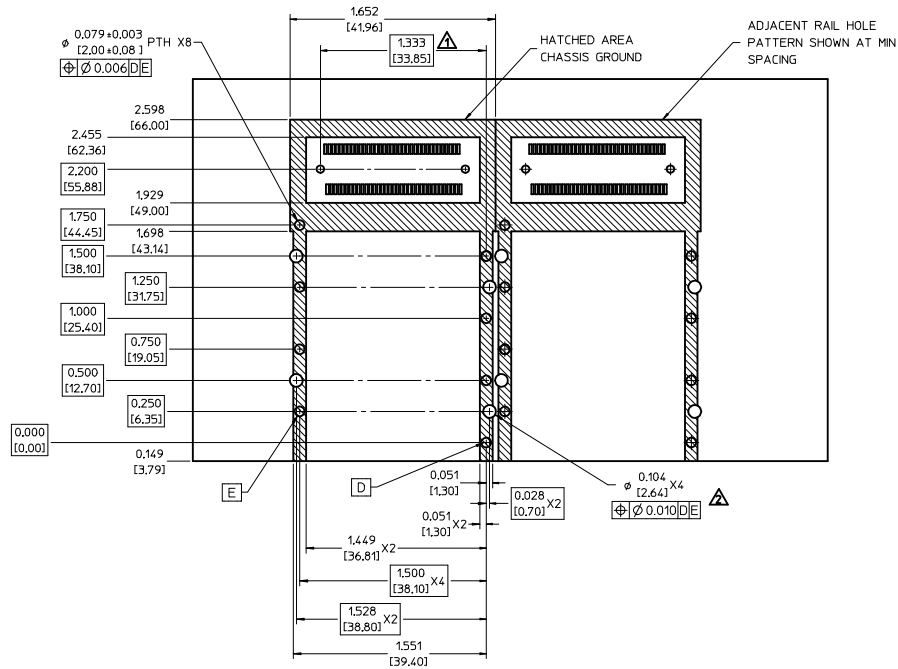
PRESS FIT FOR
 $\varnothing 0.079 \pm 0.003$
 $[2.00\text{mm} \pm 0.08]$
 HOLE IN PCB X8
 $\varnothing 0.006 \text{ [A] B}$

1. MATERIAL: NICKEL PLATED ZINC ALLOY DIECAST
2. HOLE TAPPED FOR 2-56 SCREW. SCREW USE IS OPTIONAL
3. FOR USE WITH HASL, GOLD OR SILVER IMMERSION FINISHED PTH
4. THESE DIMENSIONS EXCEED HSA MAXIMUM.
5. MINIMUM PCB THICKNESS FOR PRESS FIT ON ONE SIDE 0.062 [1.57]
6. MINIMUM PCB THICKNESS FOR BELLY TO BELLY 0.090 [2.29]



Detail 1
SCALE 8:1
ALL DIMENSIONS FOR LATCHING
HOLE MIRRORED ON OTHER SIDE

EC NO: USY2006-0482 DRAWN: JERWIN 2006/07/06 CHKD: BRUSSELL 2006/07/06 APPR: BRUSSELL 2006/07/06	QUALITY SYMBOLS -0 -0	GENERAL TOLERANCES (UNLESS SPECIFIED) mm INCH	SCALE 2:1 DESIGN UNITS INCH	THIRD ANGLE PROJECTION REVISE ON CAD ONLY
		4 PLACES ± --- ± --- 3 PLACES ± --- ± .005 2 PLACES ± 0.13 ± .010 1 PLACE ± 0.25 ± --- ANGULAR ± 1/2°	DIMENSION STYLE IN/MM DRAWN BY DATE JERWIN 2006/06/23 CHECKED BY DATE B.RUSSELL 2006/06/23 APPROVED BY DATE B.RUSSELL 2006/06/23	TITLE XPAK GUIDE RAIL ASSEMBLY (SALES)
DRAFT WHERE APPLICABLE MUST REMAIN WITHIN DIMENSIONS	THIS DRAWING CONTAINS INFORMATION THAT IS PROPRIETARY TO MOLEX INCORPORATED AND SHOULD NOT BE USED WITHOUT WRITTEN PERMISSION	SHEET NO. 1 OF 2		



SECTION B-B

1. SEE DRAWING SD-74441-001 FOR HOST CONNECTOR LAYOUT DETAIL.
2. FINISHED THROUGH HOLE DIAMETER. CAN BE PLATED OR NON-PLATED.
3. PLATED HOLES CAN BE HASL, GOLD OR SILVER IMMERSION.
4. PCB LAYOUT SHOWN IS FOR SINGLE SIDED MOUNTING ONLY.
5. BELLY TO BELLY MOUNTING REQUIRES ABOVE LAYOUT MIRRORED ON OPPOSITE SIDE OF PCB AND THE SECONDARY BEZEL OPENING MUST ACCOMMODATE THE PCB THICKNESS VARIATION.

EC NO: USY2006-0482 DRWN: JERWIN 2006/07/06 CHKD: RUSSELL 2006/07/06 APPR: RUSSELL 2006/07/06	QUALITY SYMBOLS	GENERAL TOLERANCES (UNLESS SPECIFIED)	SCALE 2:1	DESIGN UNITS INCH	THIRD ANGLE PROJECTION	REVISE ON CAD ONLY
	-0 -0	4 PLACES ± --- ± --- 3 PLACES ± --- ± .005 2 PLACES ± 0.13 ± .010 1 PLACE ± 0.25 ± --- ANGULAR ± 1/2°	DIMENSION STYLE IN/MM DRAWN BY JERWIN DATE 2006/06/23 CHECKED BY B.RUSSELL DATE 2006/06/23 APPROVED BY B.RUSSELL DATE 2006/06/23	TITLE XPAK GUIDE RAIL ASSEMBLY (SALES)		
		DRAFT WHERE APPLICABLE MUST REMAIN WITHIN DIMENSIONS	MATERIAL NO. 747320220 DOCUMENT NO. SD-74732-223 SHEET NO. 2 OF 2			
		THIS DRAWING CONTAINS INFORMATION THAT IS PROPRIETARY TO MOLEX INCORPORATED AND SHOULD NOT BE USED WITHOUT WRITTEN PERMISSION				