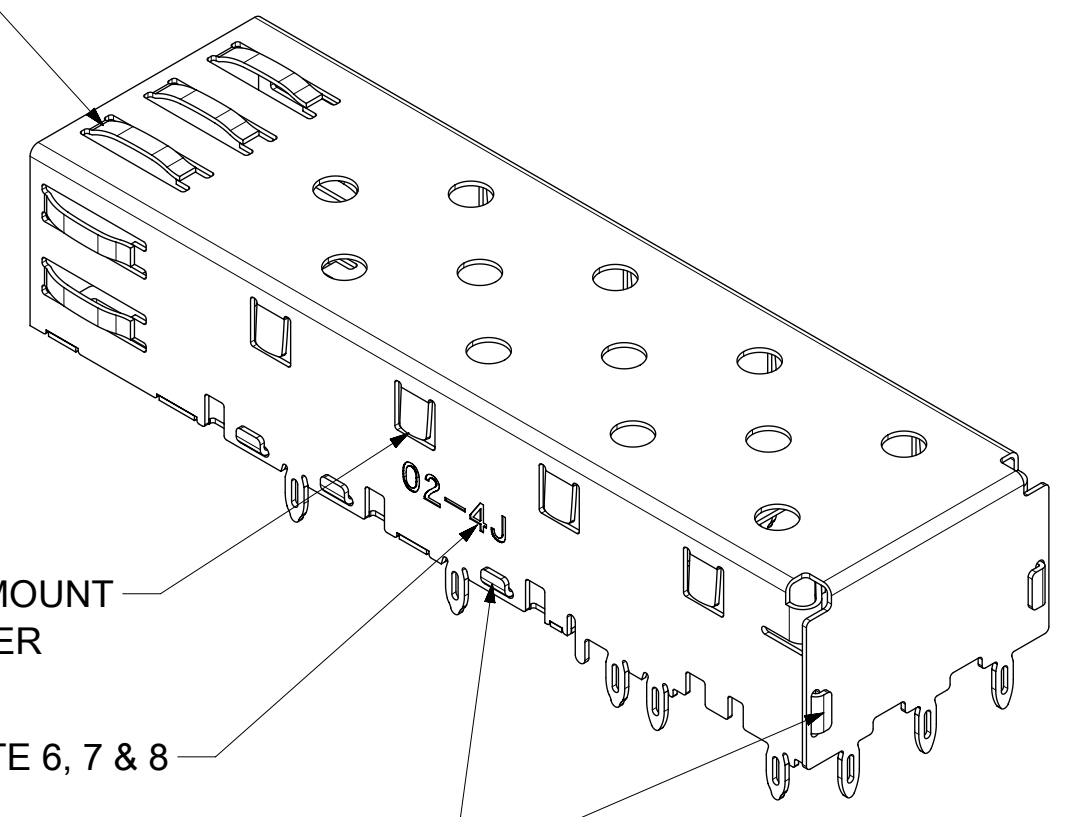


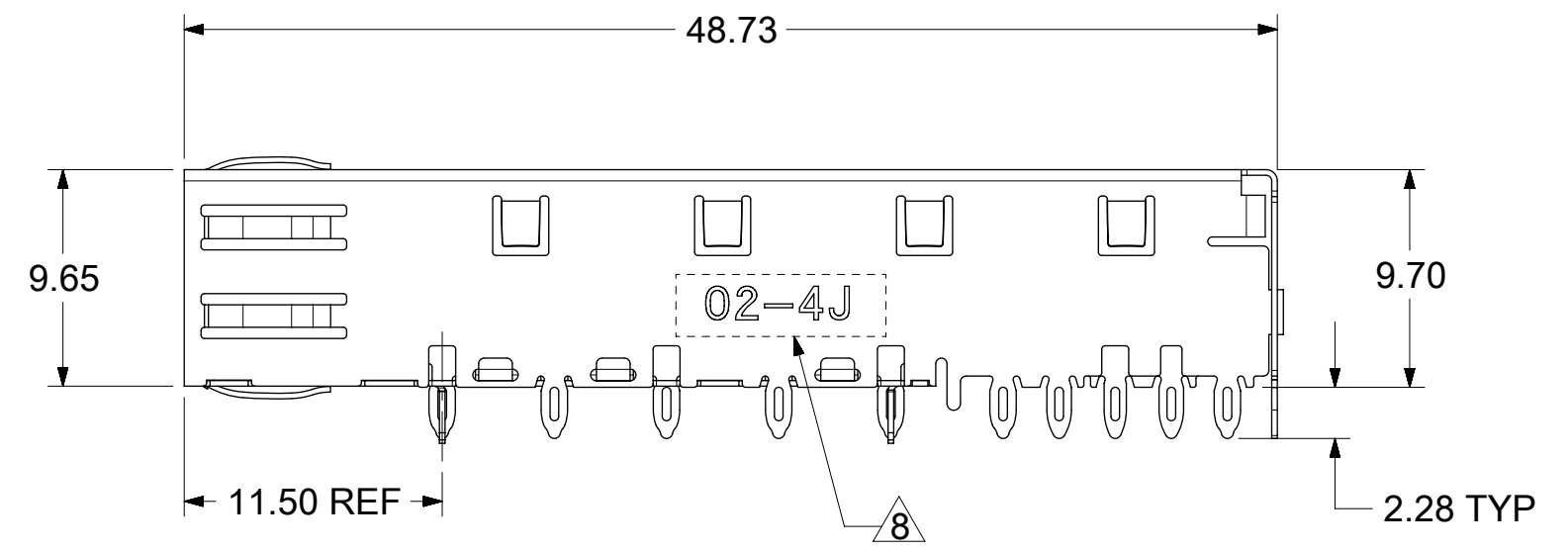
SPRING FINGER GASKET WITH TWO POINTS OF CONTACT. COMPLIES WITH (SFP) MSA BOARD AND BEZEL LOCATIONS.



TABS USED TO MOUNT LIGHT PIPE COVER

SEE NOTE 6, 7 & 8

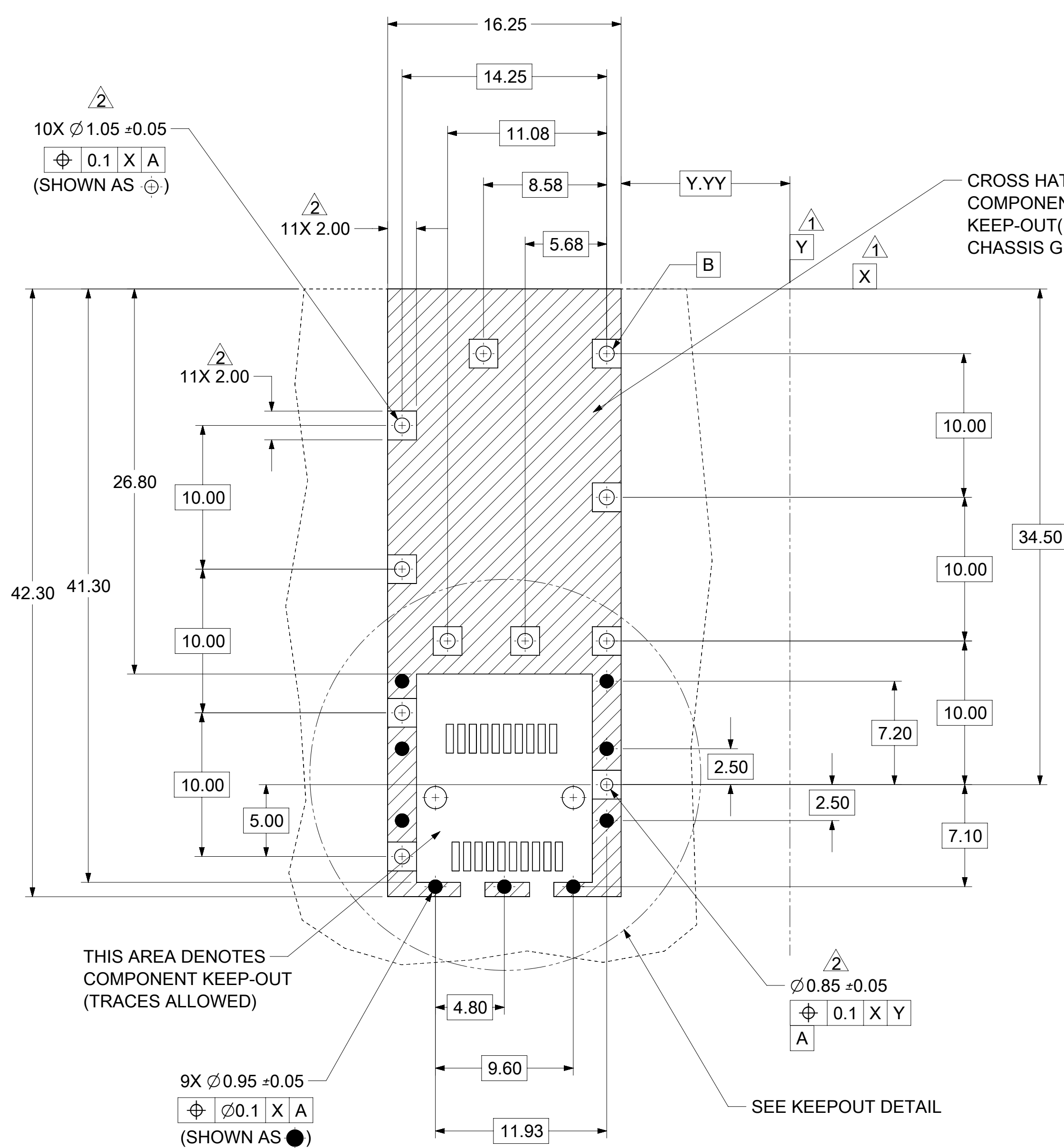
ONE PIECE DESIGN SECURLY FASTENED



NOTES:

1. PRESS FIT LEGS, 2.28mm LONG.
1.57mm MINIMUM PCB THICKNESS.
2. THIS CAGE IS FOR SINGLE SIDED USE ONLY.
3. CAN BE USED WITH THE FOLLOWING LIGHT PIPE PART NUMBERS:
747260001 - LIGHT PIPE FROM BACK TO TOP
(REFER TO DOCUMENT SD-74726-001)
747260002 - LIGHT PIPE FROM SIDE TO TOP
(REFER TO DOCUMENT SD-74726-002)
4. MATERIAL: COPPER ALLOY
PLATING: PRE-PLATED WITH NICKEL
5. NO RoHS EXEMPTIONS.
6. REVISION LETTER IS FOLLOWING MOLEX 3D MODEL.
7. INSERT TO CHANGE ENGRAVING FOR LAST TWO DIGITS OF PART NUMBER OR 3D REVISION.
8. INSERT TO IDENTIFY ADDITIONAL TOOLING STARTING WITH TOOL #2 AS FOLLOWS:
LAST TWO DIGITS OF PART NUMBER, TOOL NUMBER AND ENGINEERING DRAWING REVISION LETTER (INTERNAL USE).
(E.G., 02-4J)

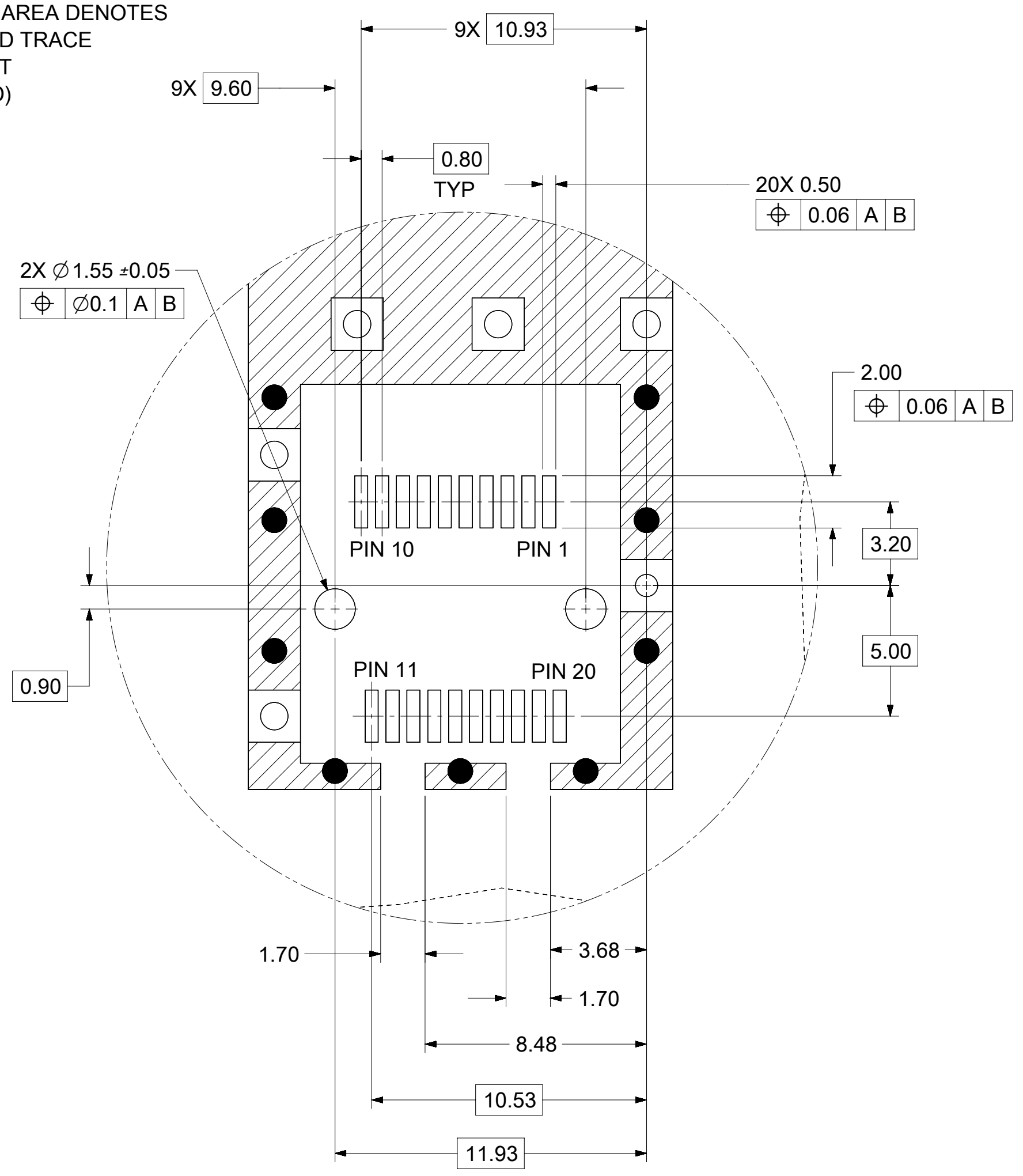
QUALITY SYMBOLS		THIS DRAWING CONTAINS INFORMATION THAT IS PROPRIETARY TO MOLEX ELECTRONIC TECHNOLOGIES, LLC AND SHOULD NOT BE USED WITHOUT WRITTEN PERMISSION									
▽ = 0	▽ = 0	SEE REVISION TABLE	EC NO: 169609 DRWN: MKEMPEGOWDA CHKD: EWANG07 REV / APPR: RCHEN08	2017/12/11 2017/12/15 2017/12/16	GENERAL TOLERANCES (UNLESS SPECIFIED)		DIMENSION UNITS	SCALE	molex		
▽ = 0	▽ = 0				ANGULAR TOL ± 1.0 °		mm	3:1			
▽ = 0	▽ = 0				4 PLACES ±	DRWN BY		DATE	SFP ONE PIECE CAGE PRESS-FIT (0.090 LEGS)		
▽ = 0	▽ = 0				3 PLACES ±	MKEMPEGOWDA		2017/12/11			
▽ = 0	▽ = 0				2 PLACES ± 0.13	CHKD BY		DATE	PRODUCT CUSTOMER DRAWING		
▽ = 0	▽ = 0	1 PLACE ± 0.25	EWANG07		2017/12/15						
▽ = 0	▽ = 0	0 PLACES ±	APPR BY		DATE	SERIES	MATERIAL NUMBER	CUSTOMER			
▽ = 0	▽ = 0	DRAFT WHERE APPLICABLE MUST REMAIN WITHIN DIMENSIONS	RCHEN08		2017/12/16	74737	747370002				
▽ = 0	▽ = 0		DRAWING SIZE		THIRD ANGLE PROJECTION	DOCUMENT NUMBER	DOC TYPE	DOC PART	SHEET NUMBER		
			C			747370002	PSD	ASY	1 OF 4		



CROSS HATCHED AREA DENOTES COMPONENTS AND TRACE KEEP-OUT (EXCEPT CHASSIS GROUND)

THIS AREA DENOTES COMPONENT KEEP-OUT (TRACES ALLOWED)

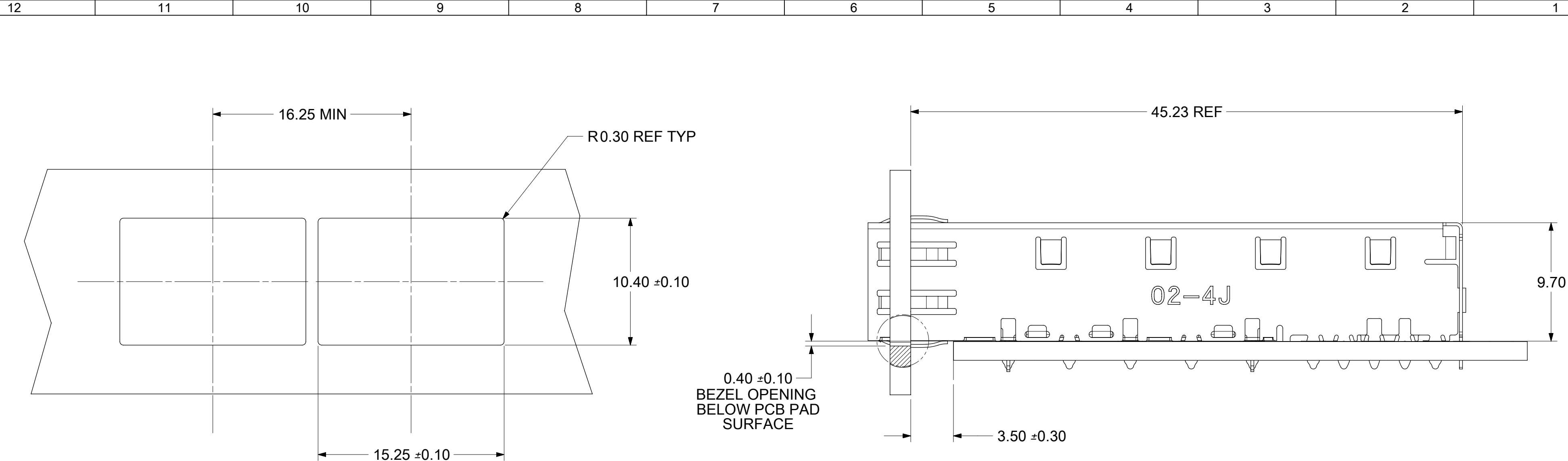
SEE KEEPOUT DETAIL



KEEPOUT DETAIL SCALE 6:1

- 1 DATUM AND BASIC DIMENSIONS ESTABLISHED BY CUSTOMER.
- 2 PADS AND VIAS ARE CHASSIS GROUND.
- 3 HOLE LAYOUT SHOWN IS FOR SINGLE SIDED MOUNTING ONLY.
- 4. CONNECTOR PAD LAYOUT PER SFP MSA, WILL ACCOMMODATE MOLEX CONNECTOR SERIES 74441 OR EQUIVALENT.

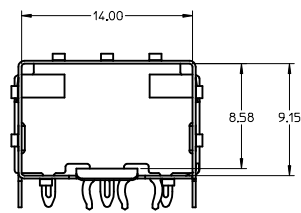
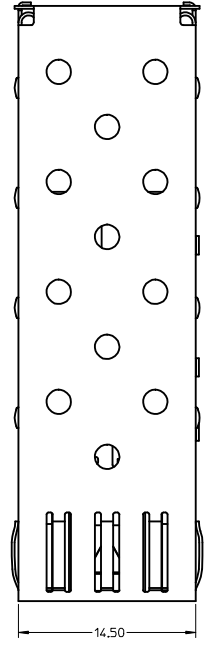
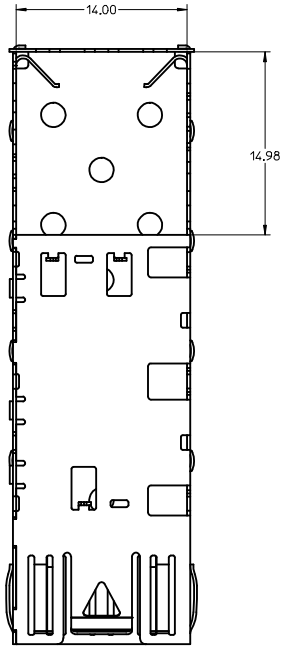
QUALITY SYMBOLS		THIS DRAWING CONTAINS INFORMATION THAT IS PROPRIETARY TO MOLEX ELECTRONIC TECHNOLOGIES, LLC AND SHOULD NOT BE USED WITHOUT WRITTEN PERMISSION		DIMENSION UNITS		SCALE		molex	
▽ = 0	▽ = 0	GENERAL TOLERANCES (UNLESS SPECIFIED)		mm		4:1			
▽ = 0	▽ = 0	ANGULAR TOL ± 1.0 °		DRWN BY		DATE		SFP ONE PIECE CAGE PRESS-FIT (0.090 LEGS)	
▽ = 0	▽ = 0	4 PLACES ±		MKEMPEGOWDA		2017/12/11			
▽ = 0	▽ = 0	3 PLACES ±		CHK'D BY		DATE		PRODUCT CUSTOMER DRAWING	
▽ = 0	▽ = 0	2 PLACES ± 0.13		EWANG07		2017/12/15			
▽ = 0	▽ = 0	1 PLACE ± 0.25		APPR BY		DATE		SERIES MATERIAL NUMBER CUSTOMER	
▽ = 0	▽ = 0	0 PLACES ±		RCHEN08		2017/12/16			
▽ = 0	▽ = 0	DRAFT WHERE APPLICABLE MUST REMAIN WITHIN DIMENSIONS		DRAWING SIZE		THIRD ANGLE PROJECTION		DOCUMENT NUMBER	
▽ = 0	▽ = 0	SEE REVISION TABLE		C		74737		747370002	
EC NO: 169609	DRWN: MKEMPEGOWDA	CHKD: EWANG07	APPR: RCHEN08	J		747370002		DOC TYPE DOC PART SHEET NUMBER	
2017/12/11	2017/12/15	2017/12/16		C		PSD ASY		2 OF 4	



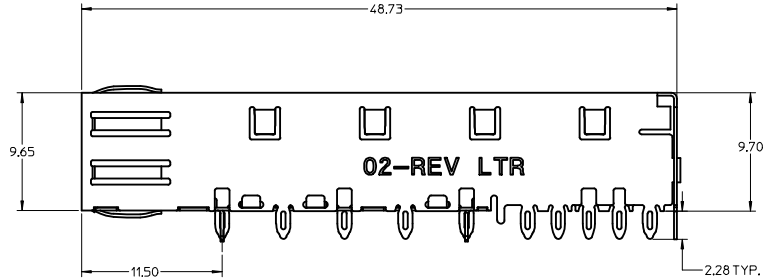
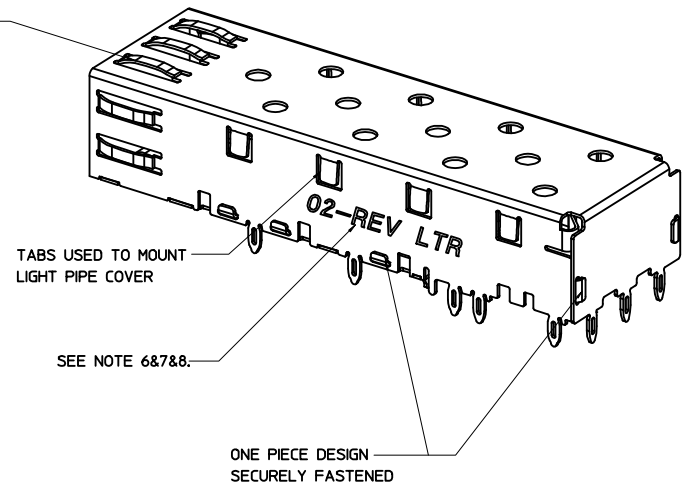
QUALITY SYMBOLS		THIS DRAWING CONTAINS INFORMATION THAT IS PROPRIETARY TO MOLEX ELECTRONIC TECHNOLOGIES, LLC AND SHOULD NOT BE USED WITHOUT WRITTEN PERMISSION										
▽ = 0	▽ = 0	SEE REVISION TABLE	EC NO: 169609 DRWN: MKEMPEGOWDA CHKD: EWANG07 REV / APPR: RCHEN08	GENERAL TOLERANCES (UNLESS SPECIFIED)		DIMENSION UNITS	SCALE	molex				
▽ = 0	▽ = 0			ANGULAR TOL ± 1.0 °		mm	4:1					
▽ = 0	▽ = 0			4 PLACES ±	DRWN BY	DATE	MKEMPEGOWDA 2017/12/11		SFP ONE PIECE CAGE PRESS-FIT (0.090 LEGS)			
▽ = 0	▽ = 0			3 PLACES ±	CHKD BY	DATE	EWANG07 2017/12/15					
▽ = 0	▽ = 0			2 PLACES ± 0.13	APPR BY	DATE	RCHEN08 2017/12/16		PRODUCT CUSTOMER DRAWING			
▽ = 0	▽ = 0			1 PLACE ± 0.25	DRAWING SIZE	THIRD ANGLE PROJECTION	C		SERIES	MATERIAL NUMBER	CUSTOMER	DOCUMENT NUMBER
▽ = 0	▽ = 0	0 PLACES ±	DRAFT WHERE APPLICABLE MUST REMAIN WITHIN DIMENSIONS	C		74737		747370002		PSD	DOC PART	SHEET NUMBER
▽ = 0	▽ = 0											

REV	DATE	DESCRIPTION
A	2007/01/17	INITIAL RELEASE
B	2007/01/24	UPDATED VIEWS
C	2007/02/08	ADDED NOTE 5
D	2007/03/06	ADDED SHEETS 2 AND 3
E	2007/01/23	UPDATED 2D VIEWS TO REFLECT CHG'S MADE TO EM-74737-004 REV E.
F	2007/04/25	[1] ADDED REV SHEET; [2] UPDATED REV NOTES A-D; [3] UPDATED DRAWING TO REFLECT CHG'S MADE TO EM-74737-002-ASSY REV D; [4] ON SHT1 ROTATED BTM_VIEW 180 DEGREES.
G	2007/11/27	[1] UPDATED VIEWS TO MATCH EM-74737-002-ASSY REV E.
H	2014/12/02	1. ADDED "MM 3D MODEL: EM-74737-004-ASSY" ON LEFT TOP CORNER. [SHEET 1] 2. ADDED NOTE 6, 7, 8. [SHEET 1] 3. CHANGED NOTE5 TO "NO RoHS EXEMPTIONS". [SHEET 1] 4. REMOVED ALL INCH UNIT. [SHEET 1~3]
J	2017/12/14	REMASTERED FROM SD-74737-002 REV H TO 747370002 PSD ASY REV J SHEET 1: A12: CHANGED EG IN NOTE 8 FROM (E.G., 02-3J) TO (E.G., 02-4J)

QUALITY SYMBOLS		THIS DRAWING CONTAINS INFORMATION THAT IS PROPRIETARY TO MOLEX ELECTRONIC TECHNOLOGIES, LLC AND SHOULD NOT BE USED WITHOUT WRITTEN PERMISSION									
▽ = 0	SEE REVISION TABLE EC NO: 169609 DRWN: MKEMPEGOWDA CHKD: EWANG07 REV / APPR: RCHEN08	GENERAL TOLERANCES (UNLESS SPECIFIED)				DIMENSION UNITS	SCALE	molex [®]			
▽ = 0		ANGULAR TOL ± 1.0 °				mm	1:1				
▽ = 0		4 PLACES ±		DRWN BY		DATE		SFP ONE PIECE CAGE PRESS-FIT (0.090 LEGS)			
▽ = 0		3 PLACES ±		MKEMPEGOWDA		2017/12/11					
▽ = 0		2 PLACES ± 0.13		CHKD BY		DATE		PRODUCT CUSTOMER DRAWING			
▽ = 0		1 PLACE ± 0.25		EWANG07		2017/12/15					
▽ = 0		0 PLACES ±		APPR BY		DATE		SERIES MATERIAL NUMBER CUSTOMER 74737 747370002			
▽ = 0		DRAFT WHERE APPLICABLE MUST REMAIN WITHIN DIMENSIONS		RCHEN08		2017/12/16					
▽ = 0		DRAFT WHERE APPLICABLE MUST REMAIN WITHIN DIMENSIONS		DRAWING SIZE		THIRD ANGLE PROJECTION		DOCUMENT NUMBER DOC TYPE DOC PART SHEET NUMBER 747370002 PSD ASY 4 OF 4			
▽ = 0		DRAFT WHERE APPLICABLE MUST REMAIN WITHIN DIMENSIONS		C							



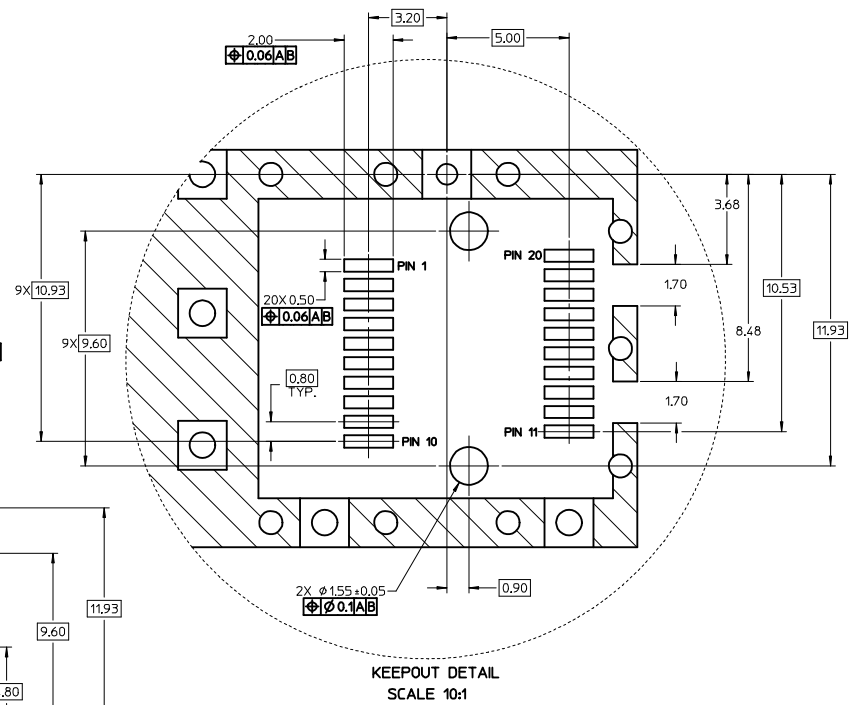
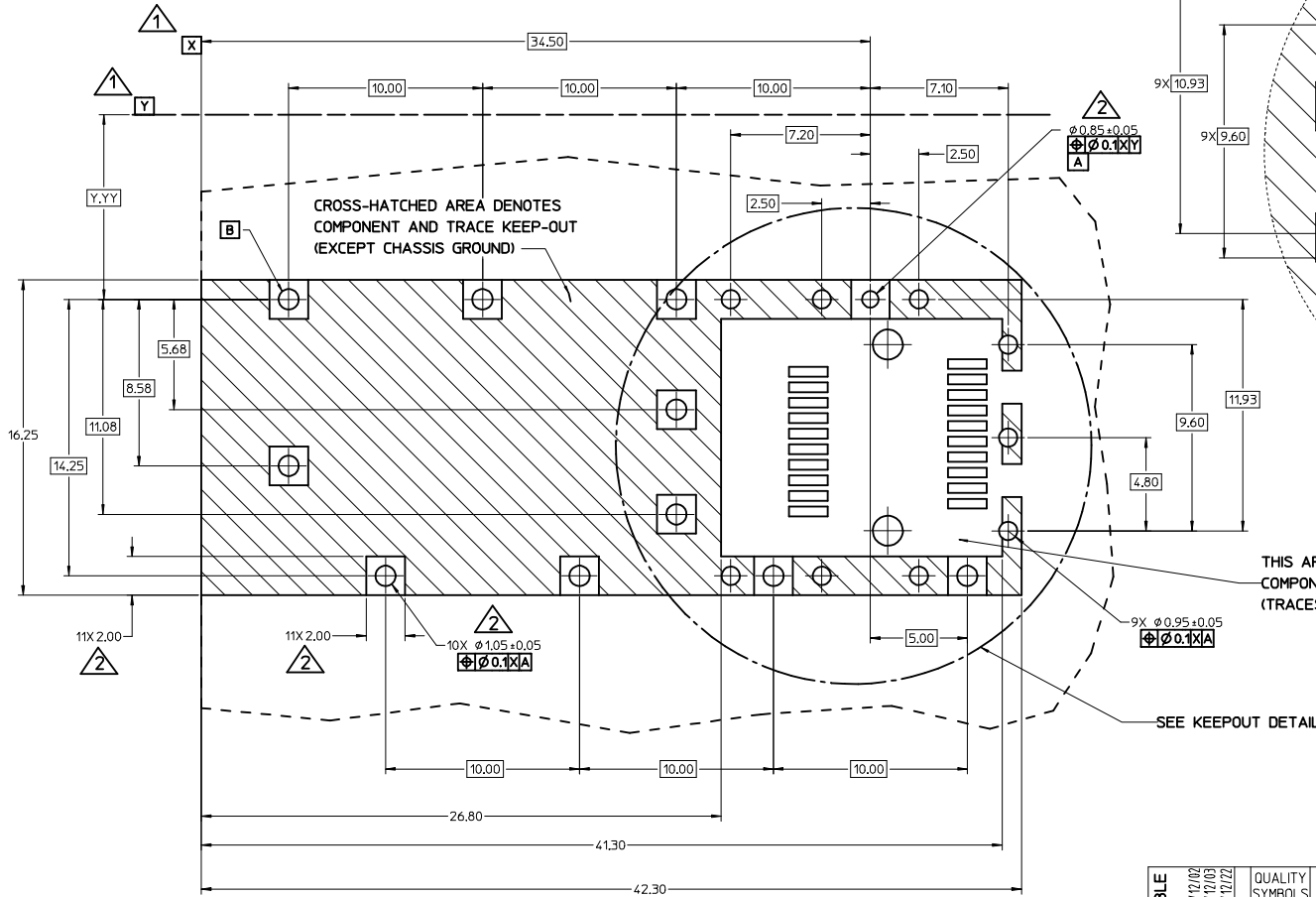
SPRING FINGER GASKET WITH TWO POINTS OF CONTACT. COMPLIES WITH (SFP) MSA BOARD AND BEZEL LOCATIONS.



- NOTES:
- PRESS FIT LEGS, 2.28mm LONG. 1.57mm MINIMUM PCB THICKNESS.
 - THIS CAGE IS FOR SINGLE SIDED USE ONLY.
 - CAN BE USED WITH THE FOLLOWING LIGHT PIPE PART NUMBERS:
747260001 - LIGHT PIPE FROM BACK TO TOP (REFER TO DOCUMENT SD-74726-001)
747260002 - LIGHT PIPE FROM SIDE TO TOP (REFER TO DOCUMENT SD-74726-002)
 - MATERIAL: COPPER ALLOY
PLATING: PRE-PLATED WITH NICKEL
 - NO RoHS EXEMPTIONS.
 - REVISION LETTER IS FOLLOWING MOLEX 3D MODEL.
 - INSERT TO CHANGE ENGRAVING FOR LAST TWO DIGITS OF PART NUMBER OR 3D REVISION.
 - INSERT TO IDENTIFY ADDITIONAL TOOLING STARTING WITH TOOL #2 AS FOLLOWS:
LAST TWO DIGITS OF PART NUMBER, TOOL NUMBER AND REVISION LETTER (E.G., 02-3J)

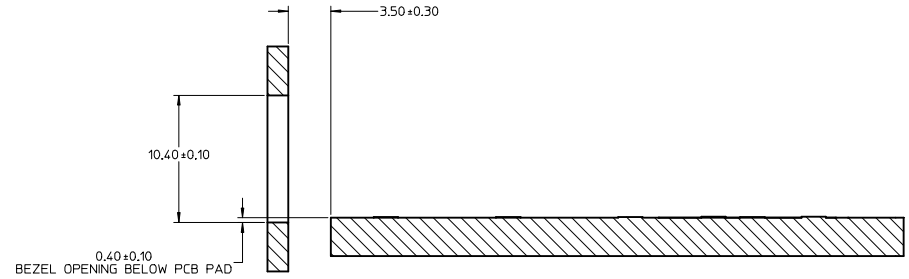
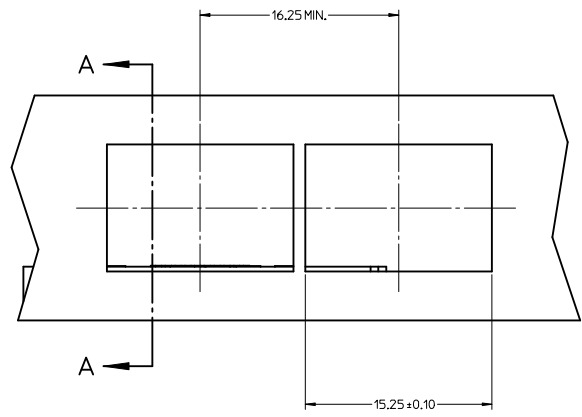
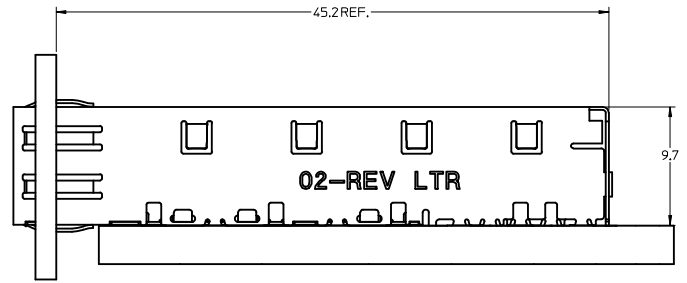
SEE REVISION TABLE IEC NO: CPG2015-2800 DRAWN BY: DRWN:LUZ0 CHECKED BY: CHYKSYANG16 APPROVED BY: APPR:RCHEN08 DATE: 2014/12/02 DATE: 2014/12/03 DATE: 2014/12/22	QUALITY SYMBOLS	GENERAL TOLERANCES (UNLESS SPECIFIED)	DIMENSION STYLE	SCALE	DESIGN UNITS	THIRD ANGLE PROJECTION
	▽=0	mm INCH	MM ONLY	5:1	METRIC	
	▽=0	4 PLACES ± --- ± ---	DRAWN BY: CCOX	DATE: 2007/01/18	TITLE: SFP ONE PIECE CAGE PRESS-FIT (0.090 LEGS)	
	▽=0	3 PLACES ± --- ± ---	CHECKED BY: RMAHMOOD	DATE: 2007/01/18	molex	
	ANGULAR ± 1 °	DRAFT WHERE APPLICABLE MUST REMAIN WITHIN DIMENSIONS	MATERIAL NO: 747370002	DOCUMENT NO: SD-74737-002	SHEET NO: 1 OF 4	

- 1. DATUM AND BASIC DIMENSIONS ESTABLISHED BY CUSTOMER.
- 2. PADS AND VIAS ARE CHASSIS GROUND.
- 3. HOLE LAYOUT SHOWN IS FOR SINGLE SIDED MOUNTING ONLY.
- 4. CONNECTOR PAD LAYOUT PER SFP MSA, WILL ACCOMMODATE MOLEX CONNECTOR SERIES 74441 OR EQUIVALENT.



SEE REVISION TABLE		QUALITY SYMBOLS		GENERAL TOLERANCES (UNLESS SPECIFIED)		DIMENSION STYLE		SCALE		DESIGN UNITS		THIRD ANGLE PROJECTION	
REV	DESCRIPTION	SYMBOL	VALUE	MM	INCH	MM ONLY	INCH	8:1	METRIC	MM	INCH	DATE	TITLE
1	CPGZ015-2800	▽=0	4 PLACES ±---	±	±---	MM ONLY	INCH	8:1	METRIC	MM	INCH	2007/01/18	SFP ONE PIECE CAGE PRESS-FIT (0.090 LEGS)
2	DRYNDL120	▽=0	3 PLACES ±---	±	±---	MM ONLY	INCH	8:1	METRIC	MM	INCH	2007/01/18	SFP ONE PIECE CAGE PRESS-FIT (0.090 LEGS)
3	CHYKSYANG16	▽=0	2 PLACES ±0.13	±	±---	MM ONLY	INCH	8:1	METRIC	MM	INCH	2007/01/18	SFP ONE PIECE CAGE PRESS-FIT (0.090 LEGS)
4	APPR:RCHEN08	▽=0	1 PLACE ±0.25	±	±---	MM ONLY	INCH	8:1	METRIC	MM	INCH	2007/01/18	SFP ONE PIECE CAGE PRESS-FIT (0.090 LEGS)
5		▽=0	0 PLACE ±	±	±---	MM ONLY	INCH	8:1	METRIC	MM	INCH	2007/01/18	SFP ONE PIECE CAGE PRESS-FIT (0.090 LEGS)
MATERIAL NO. 747370002		ANGULAR ± 1 °		DRAFT WHERE APPLICABLE MUST REMAIN WITHIN DIMENSIONS		SIZE D		DOCUMENT NO. SD-74737-002		SHEET NO. 2 OF 4		THIS DRAWING CONTAINS INFORMATION THAT IS PROPRIETARY TO MOLEX INCORPORATED AND SHOULD NOT BE USED WITHOUT WRITTEN PERMISSION	

20 19 18 17 16 15 14 13 12 11 10 9 8 7 6 5 4 3 2 1



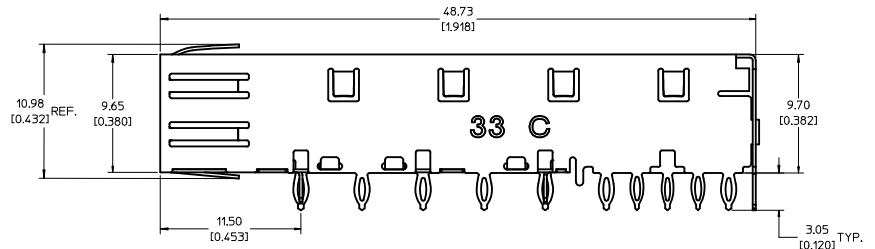
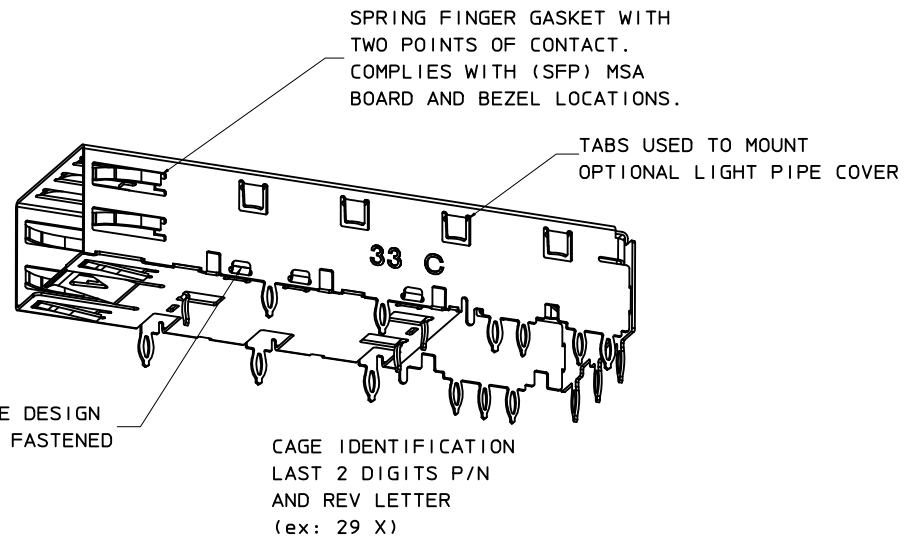
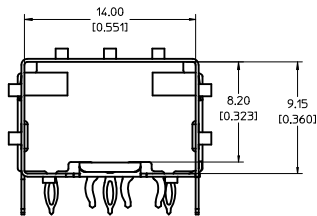
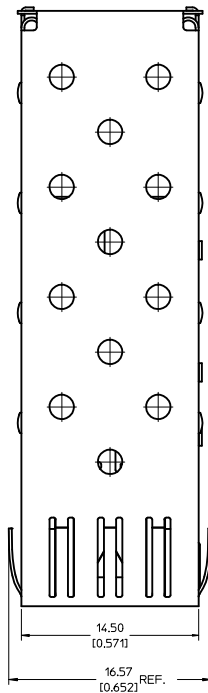
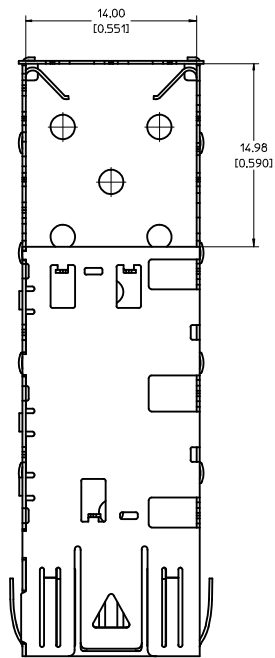
SECTION A-A

SEE REVISION TABLE EC NO: CPG2015-2800 DRW: LUL20 2014/12/02 CHK: SYANG16 2014/12/03 APPR: CHEN08 2014/12/22	QUALITY SYMBOLS ▽=0 ▽=0 ▽=0	GENERAL TOLERANCES (UNLESS SPECIFIED) <table border="1"> <thead> <tr> <th></th> <th>mm</th> <th>INCH</th> </tr> </thead> <tbody> <tr> <td>4 PLACES</td> <td>± 0.15</td> <td>± 0.005</td> </tr> <tr> <td>3 PLACES</td> <td>± 0.20</td> <td>± 0.008</td> </tr> <tr> <td>2 PLACES</td> <td>± 0.25</td> <td>± 0.010</td> </tr> <tr> <td>1 PLACE</td> <td>± 0.30</td> <td>± 0.012</td> </tr> <tr> <td>0 PLACE</td> <td>± 0.40</td> <td>± 0.016</td> </tr> </tbody> </table>		mm	INCH	4 PLACES	± 0.15	± 0.005	3 PLACES	± 0.20	± 0.008	2 PLACES	± 0.25	± 0.010	1 PLACE	± 0.30	± 0.012	0 PLACE	± 0.40	± 0.016	DIMENSION STYLE MM ONLY	SCALE 5:1	DESIGN UNITS METRIC	THIRD ANGLE PROJECTION
		mm	INCH																					
	4 PLACES	± 0.15	± 0.005																					
	3 PLACES	± 0.20	± 0.008																					
2 PLACES	± 0.25	± 0.010																						
1 PLACE	± 0.30	± 0.012																						
0 PLACE	± 0.40	± 0.016																						
DRAWN BY CCOX 2007/01/18	CHECKED BY RMAHMOOD 2007/01/18	APPROVED BY RMAHMOOD 2007/01/18	MATERIAL NO. 747370002	DOCUMENT NO. SD-74737-002	TITLE SFP ONE PIECE CAGE PRESS-FIT (0.090 LEGS)	SHEET NO. 3 OF 4																		
DRAFT WHERE APPLICABLE MUST REMAIN WITHIN DIMENSIONS		molex																						
THIS DRAWING CONTAINS INFORMATION THAT IS PROPRIETARY TO MOLEX INCORPORATED AND SHOULD NOT BE USED WITHOUT WRITTEN PERMISSION																								

19 18 17 16 15 14 13 12 11 10 9 8 7 6 5 4 3 2 1

DATE	REV	REVISION TABLE
2007/01/17	A	INITIAL RELEASE
2007/01/24	B	UPDATED VIEWS
2007/02/08	C	ADDED NOTE 5
2007/03/06	D	ADDED SHEETS 2 AND 3
2007/01/23	E	UPDATED 2D VIEWS TO REFLECT CHG'S MADE TO EM-74737-002 REV E.
2007/04/25	F	[1] ADDED REV SHEET, [2] UPDATED REV NOTES A-D, [3] UPDATED DRAWING TO REFLECT CHG'S MADE TO EM-74737-002-ASSY REV D, [4] ON SHT1 ROTATED BTM_VIEW 180 DEGREES.
2007/11/27	G	[1] UPDATED VIEWS TO MATCH EM-74737-002-ASSY REV E.
2014/12/02	H	1. ADDED *MM 3D MODEL: EM-74737-002-ASSY* ON LEFT TOP CORNER. [SHEET 1] 2. ADDED NOTE 6, 7, 8. [SHEET 1] 3. CHANGED NOTE5 TO *NO RoHS EXEMPTIONS*. [SHEET 1] 4. REMOVED ALL INCH UNIT. [SHEET 1~3]

SEE REVISION TABLE IEC NO: CPG2015-2800 DRAWN LIZUO 2014/12/02 CHYKOSYANG16 2014/12/03 APPROVED CHEN08 2014/12/22 REV DESCRIPTION	QUALITY SYMBOLS	GENERAL TOLERANCES (UNLESS SPECIFIED)	DIMENSION STYLE	SCALE	DESIGN UNITS	THIRD ANGLE PROJECTION	
	▽=0	4 PLACES ± mm INCH	MM ONLY	1:1	METRIC		
	▽=0	3 PLACES ± 0.13	DRAWN BY DATE	TITLE			
	▽=0	2 PLACES ± 0.25	CHECKED BY DATE	SFP ONE PIECE CAGE PRESS-FIT (0.090 LEGS)			
	ANGULAR ± 1 °	1 PLACE ±	APPROVED BY DATE	MATERIAL NO. DOCUMENT NO. SHEET NO.			
	DRAFT WHERE APPLICABLE MUST REMAIN WITHIN DIMENSIONS	0 PLACE ±	DATE	747370002 SD-74737-002 4 OF 4			
			THIS DRAWING CONTAINS INFORMATION THAT IS PROPRIETARY TO MOLEX INCORPORATED AND SHOULD NOT BE USED WITHOUT WRITTEN PERMISSION				

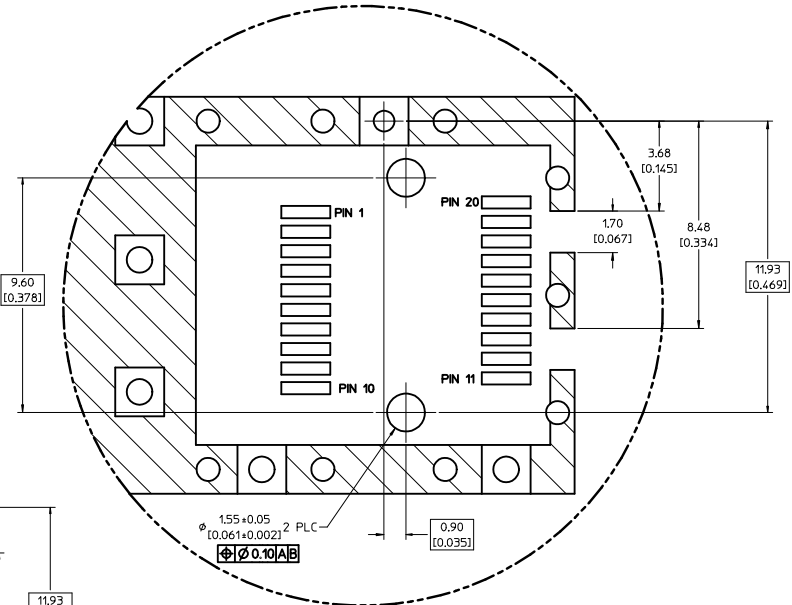
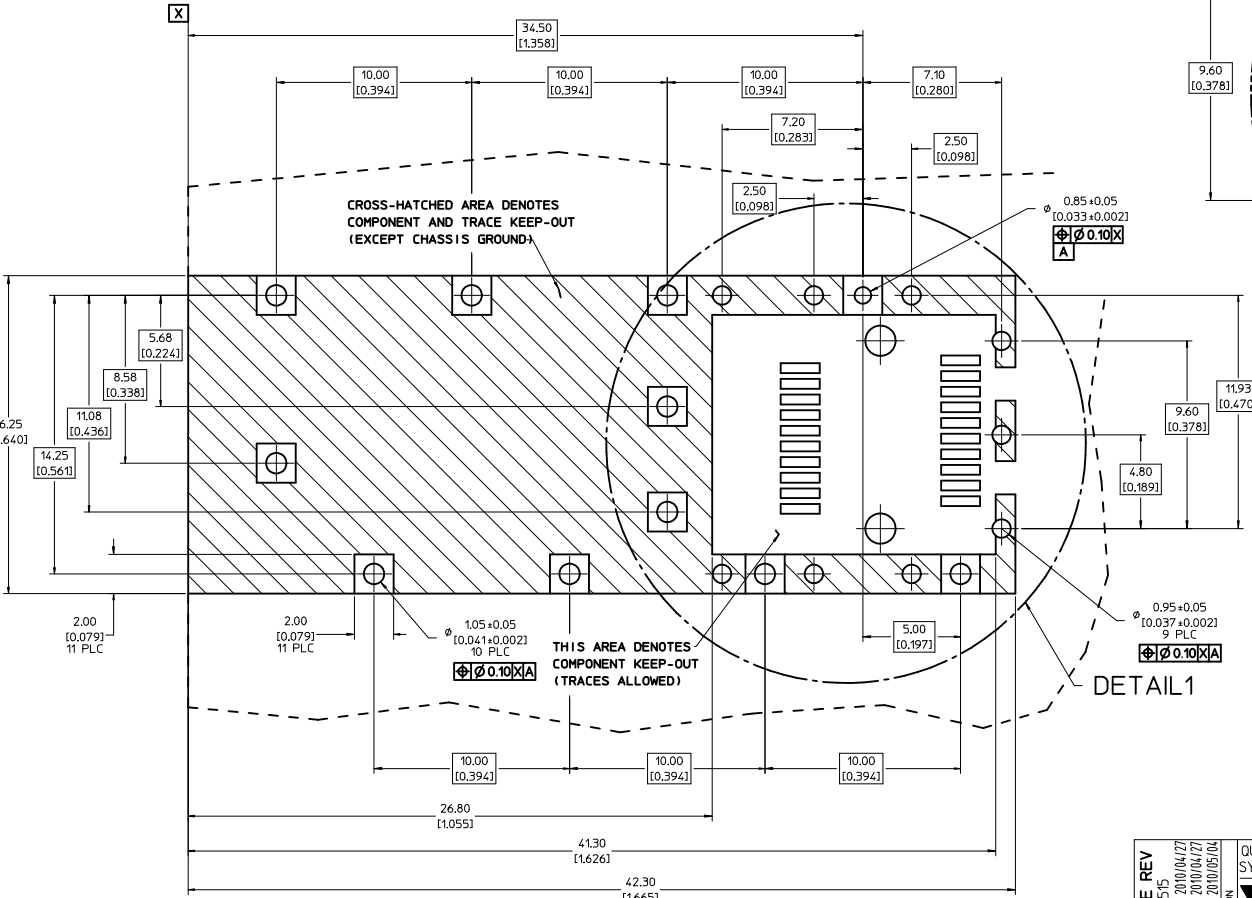


NOTES:

- PRESS FIT LEGS, 0.120 INCHES LONG.
1.57 [0.062] MINIMUM PCB THICKNESS.
- THIS CAGE IS FOR SINGLE SIDED USE ONLY.
- CAN BE USED WITH THE FOLLOWING LIGHT PIPE PART NUMBERS:
747260001 - LIGHT PIPE FROM BACK TO TOP
(REFER TO DOCUMENT SD-74726-001)
747260002 - LIGHT PIPE FROM SIDE TO TOP
(REFER TO DOCUMENT SD-74726-002)
- MATERIAL: COPPER ALLOY
PLATING: PRE-PLATED WITH NICKEL
- THIS PART MEETS THE RESTRICTION OF HAZARDOUS SUBSTANCES IN ELECTRICAL AND ELECTRONIC EQUIPMENT (ROHS) DIRECTIVE (2002/95/EC).

REV DIMS-CAGE REV EC NO: USY2010-0515 DRAWN BY: CHYOKI JANOTA APPROV: K JANOTA 2010/04/27 2010/05/04	QUALITY SYMBOLS ▽=0 ▽=0	GENERAL TOLERANCES (UNLESS SPECIFIED): <table border="1"> <tr> <th></th> <th>mm</th> <th>INCH</th> </tr> <tr> <td>4 PLACES</td> <td>±0.05</td> <td>±0.002</td> </tr> <tr> <td>3 PLACES</td> <td>±0.025</td> <td>±0.001</td> </tr> <tr> <td>2 PLACES</td> <td>±0.13</td> <td>±0.01</td> </tr> <tr> <td>1 PLACE</td> <td>±0.25</td> <td>±0.01</td> </tr> </table>			mm	INCH	4 PLACES	±0.05	±0.002	3 PLACES	±0.025	±0.001	2 PLACES	±0.13	±0.01	1 PLACE	±0.25	±0.01	DIMENSION STYLE MM/IN	SCALE 5:1	DESIGN UNITS METRIC	THIRD ANGLE PROJECTION
			mm	INCH																		
4 PLACES	±0.05	±0.002																				
3 PLACES	±0.025	±0.001																				
2 PLACES	±0.13	±0.01																				
1 PLACE	±0.25	±0.01																				
DRAFT WHERE APPLICABLE MUST REMAIN WITHIN DIMENSIONS		MATERIAL NO. 747370033	DATE 2009/09/28	DATE 2009/09/28	DATE 2009/09/28	TITLE SFP ONE PIECE CAGE PRESS-FIT (0.120 LEGS) W/ MODIFIED LATCH TANG																
		MOLEX INCORPORATED		MOLEX INCORPORATED		SHEET NO. 1 OF 3																

1. PADS AND VIAS ARE CHASSIS GROUND.
2. HOLE LAYOUT SHOWN IS FOR SINGLE SIDED MOUNTING ONLY.
3. CONNECTOR PAD LAYOUT PER SFP MSA, WILL ACCOMMODATE MOLEX CONNECTOR SERIES 74441 OR EQUIVALENT.

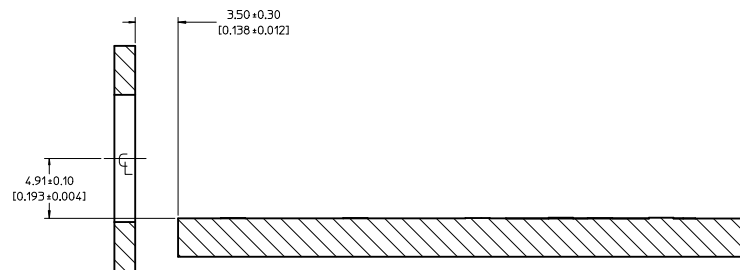
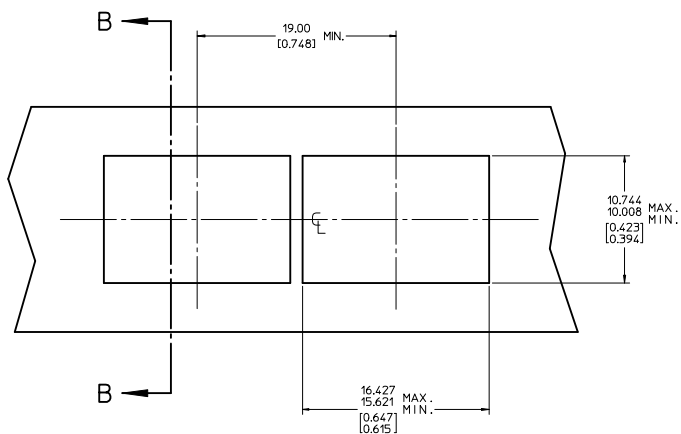
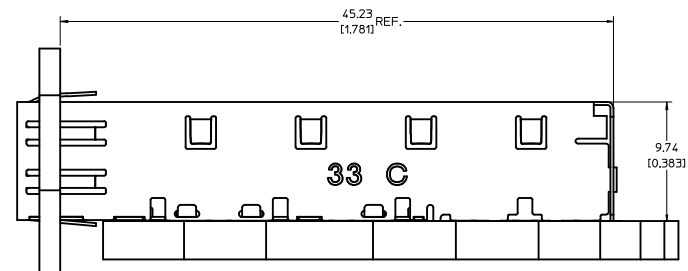


DETAIL 1
SCALE 10:1

DETAIL 1

REV DIMS-CAGE REV IEC NO: USY2010-0515 DRAWN/SECRET 2010/04/27 CHKD/K.JANITA 2010/04/27 APPR/K.JANITA 2010/05/04	QUALITY SYMBOLS	GENERAL TOLERANCES (UNLESS SPECIFIED)	DIMENSION STYLE	SCALE	DESIGN UNITS	THIRD ANGLE PROJECTION
	▽=0 ▽=0	mm INCH 4 PLACES ± --- ± --- 3 PLACES ± --- ± 0.005 2 PLACES ± 0.13 ± 0.01 1 PLACE ± 0.25 ± --- ANGULAR ± 1 °	MM/IN	8:1	METRIC	DRAWN BY DATE JRESENDE 2009/09/28 CHECKED BY DATE JRESENDE 2009/09/28 APPROVED BY DATE JRESENDE 2009/09/28
	DRAFT WHERE APPLICABLE MUST REMAIN WITHIN DIMENSIONS	MATERIAL NO.	DOCUMENT NO.	TITLE SFP ONE PIECE CAGE PRESS-FIT (0.120 LEGS) W/ MODIFIED LATCH TANG MOLEX INCORPORATED		
	SIZE D	747370033	SD-74737-0033	SHEET NO. 2 OF 3		

20 19 18 17 16 15 14 13 12 11 10 9 8 7 6 5 4 3 2 1



SECTION B-B

REV DIMS-CAGE REV IEC NO: USY2010-0515 DRAWN BY: CHYKOKI ANOTA CHECKED BY: APPR:KJANOTA DATE: 2010/04/27 DATE: 2010/05/04	QUALITY SYMBOLS	GENERAL TOLERANCES (UNLESS SPECIFIED)	DIMENSION STYLE	SCALE	DESIGN UNITS	THIRD ANGLE PROJECTION	
	▼=0 ▽=0	mm INCH 4 PLACES ± --- ± --- 3 PLACES ± --- ± 0.005 2 PLACES ± 0.13 ± 0.01 1 PLACE ± 0.25 ± --- ANGULAR ± 1 °	MM/IN	5:1	METRIC	DRAWN BY: JRESENDE CHECKED BY: JRESENDE APPROVED BY: JRESENDE DATE: 2009/09/28 DATE: 2009/09/28 DATE: 2009/09/28	TITLE: SFP ONE PIECE CAGE PRESS-FIT (0.120 LEGS) W/ MODIFIED LATCH TANG MOLEX INCORPORATED
	DRAFT WHERE APPLICABLE MUST REMAIN WITHIN DIMENSIONS	MATERIAL NO: 747370033 DOCUMENT NO: SD-74737-0033	SHEET NO: 3 OF 3	THIS DRAWING CONTAINS INFORMATION THAT IS PROPRIETARY TO MOLEX INCORPORATED AND SHOULD NOT BE USED WITHOUT WRITTEN PERMISSION			

19 18 17 16 15 14 13 12 11 10 9 8 7 6 5 4 3 2 1