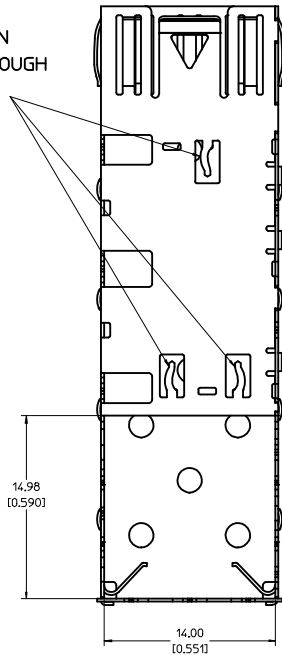
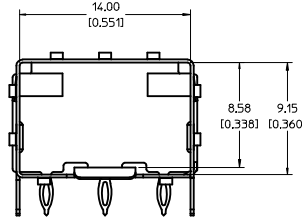
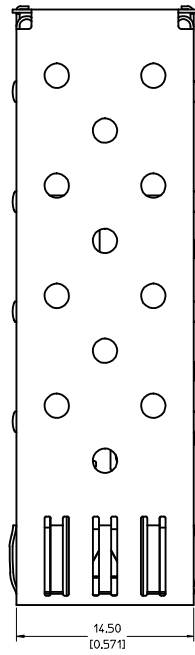


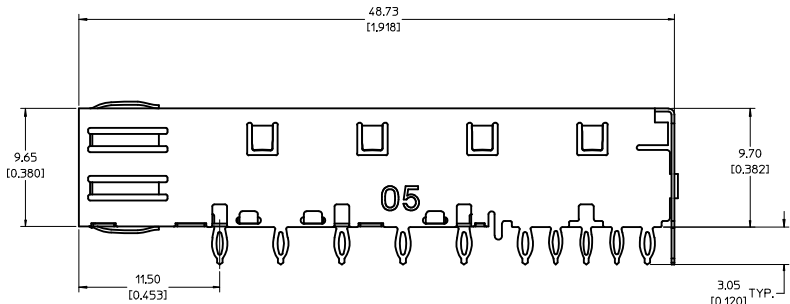
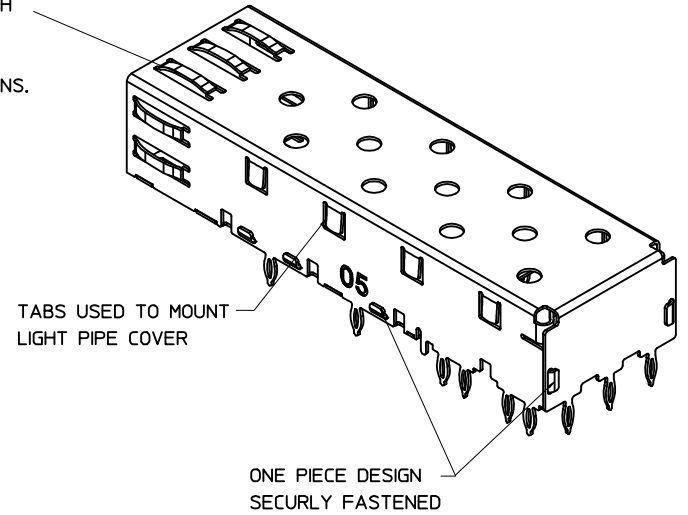
EMI PINS REMAIN
FLAT. NO THROUGH
HOLES IN PCB
NECESSARY.



BOTTOM VIEW



SPRING FINGER GASKET WITH
TWO POINTS OF CONTACT.
COMPLIES WITH (SFP) MSA
BOARD AND BEZEL LOCATIONS.



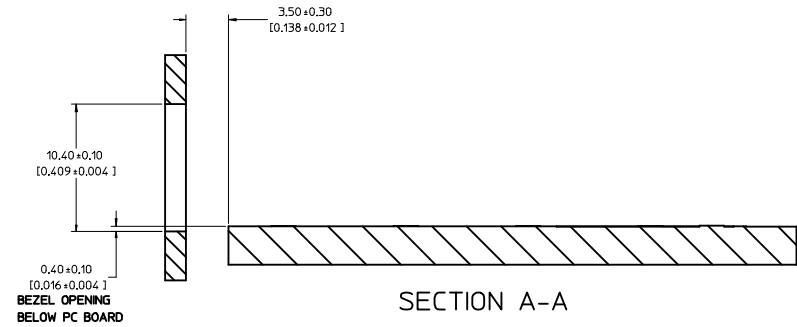
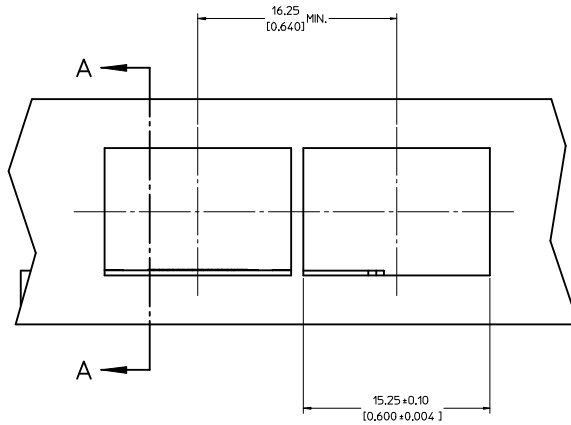
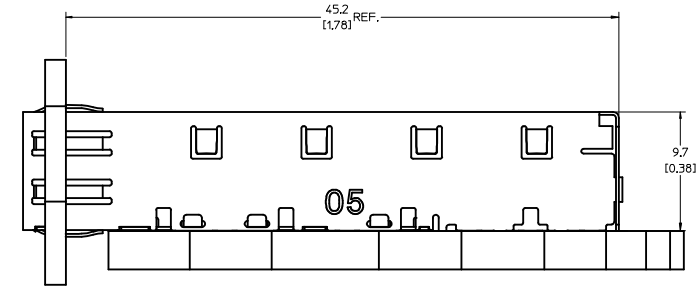
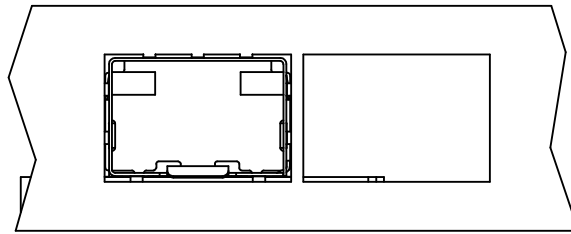
NOTES:

- PRESS FIT LEGS, 0.120 INCHES LONG.
1.57 (0.062) MINIMUM PCB THICKNESS.
- THIS CAGE IS FOR SINGLE SIDED USE ONLY.
- CAN BE USED WITH THE FOLLOWING LIGHT PIPE PART NUMBERS:

747260001 - LIGHT PIPE FROM BACK TO TOP
(REFER TO DOCUMENT SD-74726-001)

747260002 - LIGHT PIPE FROM SIDE TO TOP
(REFER TO DOCUMENT SD-74726-002)
- MATERIAL: COPPER ALLOY
PLATING: PRE-PLATED WITH NICKEL
- THIS PART MEETS THE RESTRICTION OF HAZARDOUS SUBSTANCES IN
ELECTRICAL AND ELECTRONIC EQUIPMENT (ROHS) DIRECTIVE (2002/95/EC).

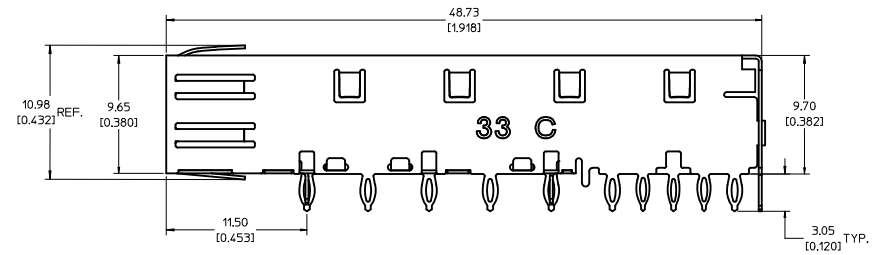
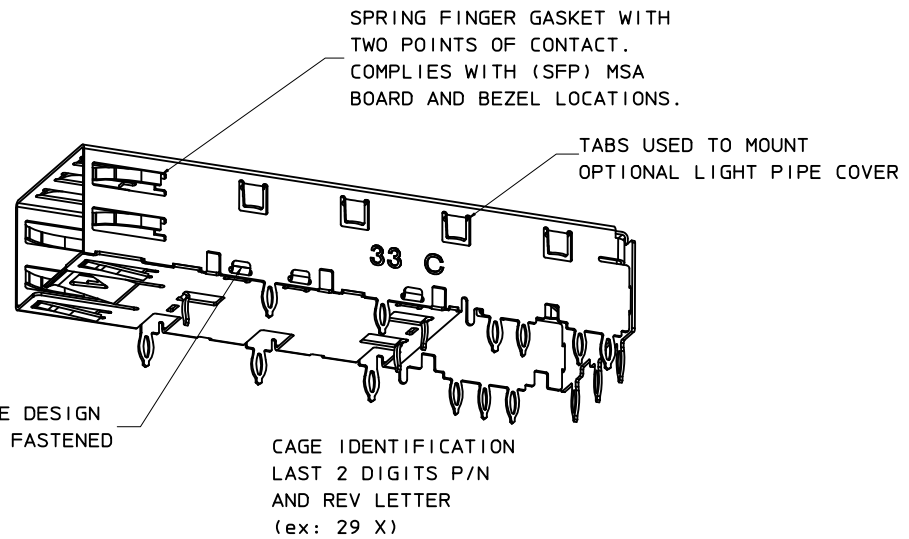
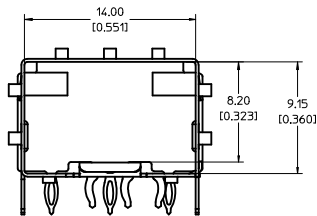
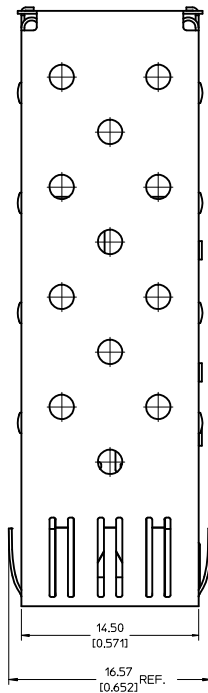
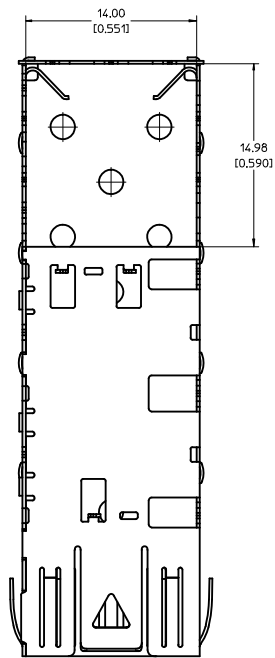
ENTER DESCRIPTION EC NO: USY2006-0052 DRAWN BY: KSI MONSON 2005/09/13 CHECKED BY: CHYD BRUSSELL 2005/09/13 APPROVED BY: BRUSSELL 2005/09/14	QUALITY SYMBOLS ▽=0 ▽=0	GENERAL TOLERANCES (UNLESS SPECIFIED)		DIMENSION STYLE MM/IN	SCALE 5:1	DESIGN UNITS METRIC	THIRD ANGLE PROJECTION
		4 PLACES ±--- ±--- 3 PLACES ±--- ±.005 2 PLACES ±0.13 ±.01 1 PLACE ±0.25 ±--- ANGULAR ± 1°	mm INCH	DRAWN BY: KSI MONSON DATE: 2005/09/12	TITLE: SFP ONE PIECE CAGE PRESS-FIT (0.120 LEGS) NO EMI PINS		
		DRAFT WHERE APPLICABLE MUST REMAIN WITHIN DIMENSIONS	MATERIAL NO: 747370005	DATE: 2005/09/12	DOCUMENT NO: SD-74737-0005		
		SIZE D	MOLEX INCORPORATED	SHEET NO. 1 OF 3	THIS DRAWING CONTAINS INFORMATION THAT IS PROPRIETARY TO MOLEX INCORPORATED AND SHOULD NOT BE USED WITHOUT WRITTEN PERMISSION		



ENTER DESCRIPTION IEC NO: USY2006-0052 DRAWN BY: KSI MONSON 2005/09/13 CHECKED BY: CHYD BRUSSELL 2005/09/13 APPROVED BY: APPR: BRUSSELL 2005/09/14	QUALITY SYMBOLS ▽=0 ▽=0	GENERAL TOLERANCES (UNLESS SPECIFIED) <table border="1"> <thead> <tr> <th></th> <th>mm</th> <th>INCH</th> </tr> </thead> <tbody> <tr> <td>4 PLACES</td> <td>±---</td> <td>±---</td> </tr> <tr> <td>3 PLACES</td> <td>±---</td> <td>±.005</td> </tr> <tr> <td>2 PLACES</td> <td>±0.13</td> <td>±.01</td> </tr> <tr> <td>1 PLACE</td> <td>±0.25</td> <td>±---</td> </tr> </tbody> </table>		mm	INCH	4 PLACES	±---	±---	3 PLACES	±---	±.005	2 PLACES	±0.13	±.01	1 PLACE	±0.25	±---	DIMENSION STYLE MM/IN	SCALE 5:1	DESIGN UNITS METRIC	THIRD ANGLE PROJECTION
		mm	INCH																		
	4 PLACES	±---	±---																		
	3 PLACES	±---	±.005																		
2 PLACES	±0.13	±.01																			
1 PLACE	±0.25	±---																			
			DRAWN BY: KSI MONSON DATE: 2005/09/12	TITLE SFP ONE PIECE CAGE PRESS-FIT (0.120 LEGS) NO EMI PINS																	
			CHECKED BY: BRUSSELL DATE: 2005/09/12	MOLEX INCORPORATED																	
			APPROVED BY: BRUSSELL DATE: 2005/09/12	MATERIAL NO. 747370005	DOCUMENT NO. SD-74737-0005	SHEET NO. 3 OF 3															

DRAFT WHERE APPLICABLE MUST REMAIN WITHIN DIMENSIONS

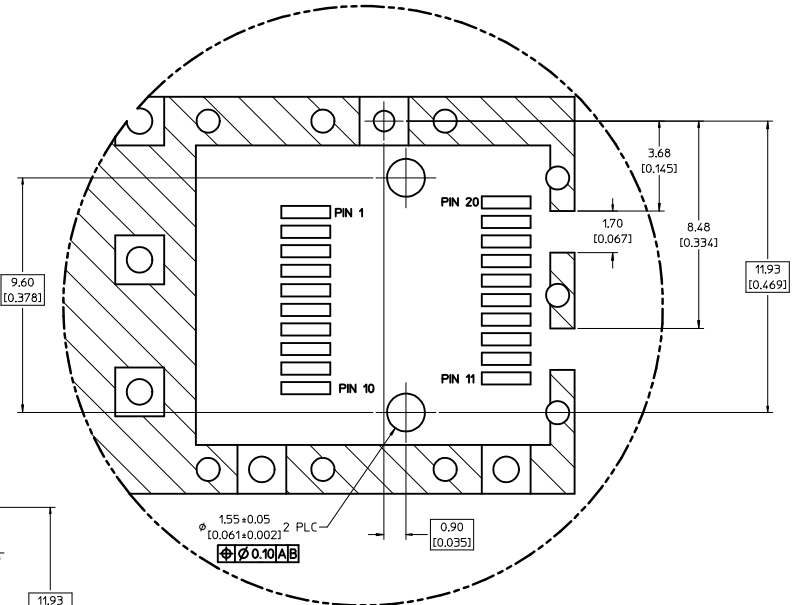
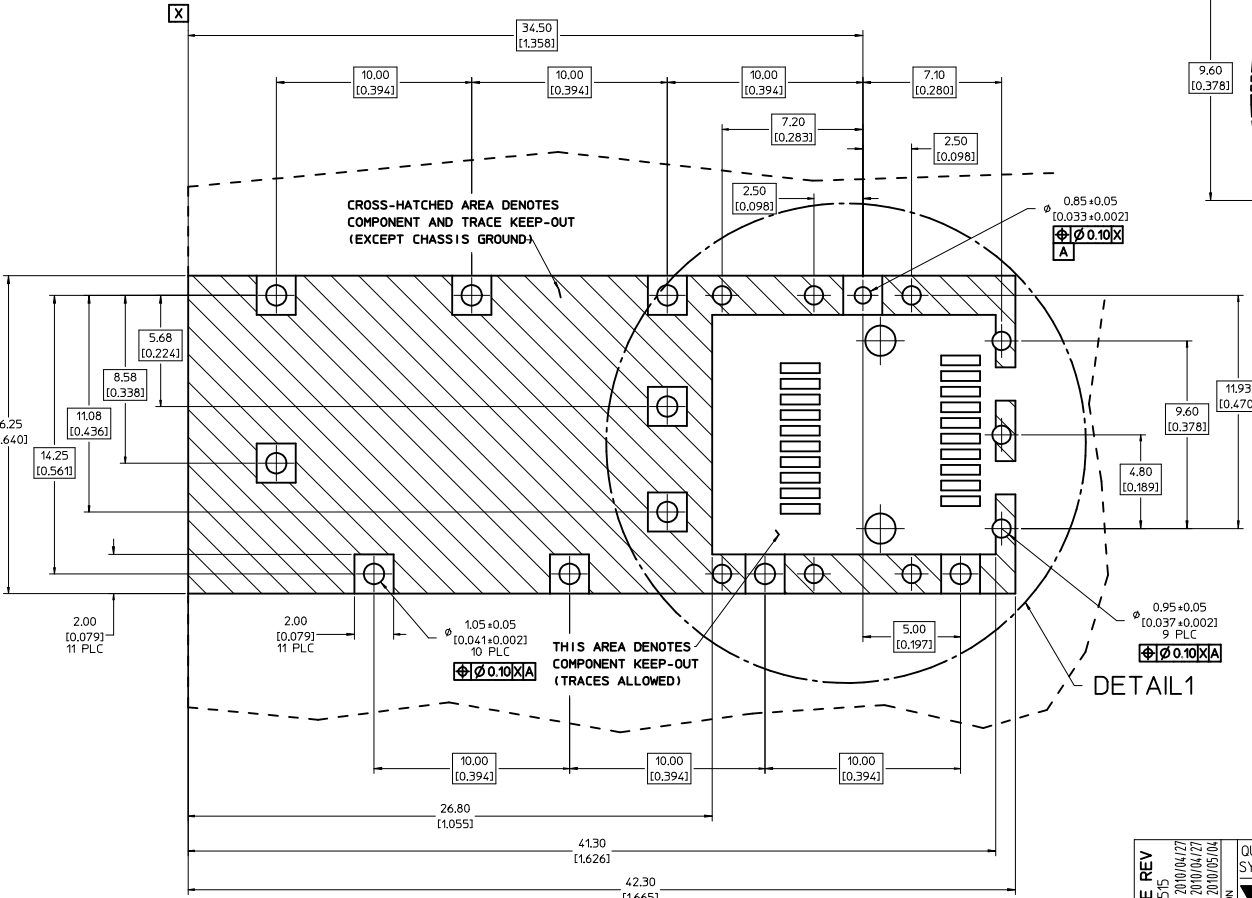
THIS DRAWING CONTAINS INFORMATION THAT IS PROPRIETARY TO MOLEX INCORPORATED AND SHOULD NOT BE USED WITHOUT WRITTEN PERMISSION



- NOTES:**
- PRESS FIT LEGS, 0.120 INCHES LONG.
1.57 [0.062] MINIMUM PCB THICKNESS.
 - THIS CAGE IS FOR SINGLE SIDED USE ONLY.
 - CAN BE USED WITH THE FOLLOWING LIGHT PIPE PART NUMBERS:
747260001 - LIGHT PIPE FROM BACK TO TOP
(REFER TO DOCUMENT SD-74726-001)
747260002 - LIGHT PIPE FROM SIDE TO TOP
(REFER TO DOCUMENT SD-74726-002)
 - MATERIAL: COPPER ALLOY
PLATING: PRE-PLATED WITH NICKEL
 - THIS PART MEETS THE RESTRICTION OF HAZARDOUS SUBSTANCES IN ELECTRICAL AND ELECTRONIC EQUIPMENT (ROHS) DIRECTIVE (2002/95/EC).

REV DIMS-CAGE REV EC NO: USY2010-0515 DRAWN BY: CHYKOKI ANOTA APPROV: K. ANOTA 2010/05/04	QUALITY SYMBOLS ▽=0 ▽=0	GENERAL TOLERANCES (UNLESS SPECIFIED): <table border="1"> <tr> <th></th> <th>mm</th> <th>INCH</th> </tr> <tr> <td>4 PLACES</td> <td>±0.05</td> <td>±0.002</td> </tr> <tr> <td>3 PLACES</td> <td>±0.025</td> <td>±0.001</td> </tr> <tr> <td>2 PLACES</td> <td>±0.13</td> <td>±0.01</td> </tr> <tr> <td>1 PLACE</td> <td>±0.25</td> <td>±0.01</td> </tr> </table>			mm	INCH	4 PLACES	±0.05	±0.002	3 PLACES	±0.025	±0.001	2 PLACES	±0.13	±0.01	1 PLACE	±0.25	±0.01	DIMENSION STYLE MM/IN	SCALE 5:1	DESIGN UNITS METRIC	THIRD ANGLE PROJECTION
			mm	INCH																		
4 PLACES	±0.05	±0.002																				
3 PLACES	±0.025	±0.001																				
2 PLACES	±0.13	±0.01																				
1 PLACE	±0.25	±0.01																				
DESCRIPTION SFP ONE PIECE CAGE PRESS-FIT (0.120 LEGS) W/ MODIFIED LATCH TANG	DRAWN BY JRESENDE	DATE 2009/09/28	TITLE SFP ONE PIECE CAGE PRESS-FIT (0.120 LEGS) W/ MODIFIED LATCH TANG	MOLEX INCORPORATED																		
DRAFT WHERE APPLICABLE MUST REMAIN WITHIN DIMENSIONS	MATERIAL NO. 747370033	DATE 2009/09/28	DOCUMENT NO. SD-74737-0033	SHEET NO. 1 OF 3	THIS DRAWING CONTAINS INFORMATION THAT IS PROPRIETARY TO MOLEX INCORPORATED AND SHOULD NOT BE USED WITHOUT WRITTEN PERMISSION																	

1. PADS AND VIAS ARE CHASSIS GROUND.
2. HOLE LAYOUT SHOWN IS FOR SINGLE SIDED MOUNTING ONLY.
3. CONNECTOR PAD LAYOUT PER SFP MSA, WILL ACCOMMODATE MOLEX CONNECTOR SERIES 74441 OR EQUIVALENT.

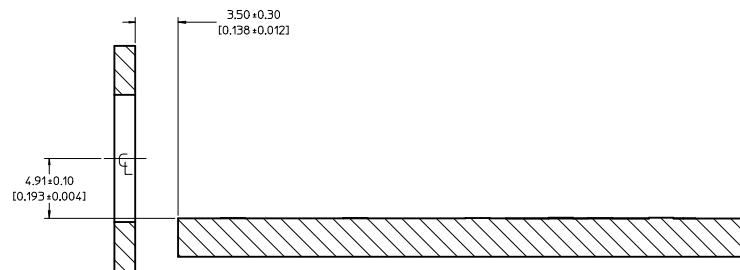
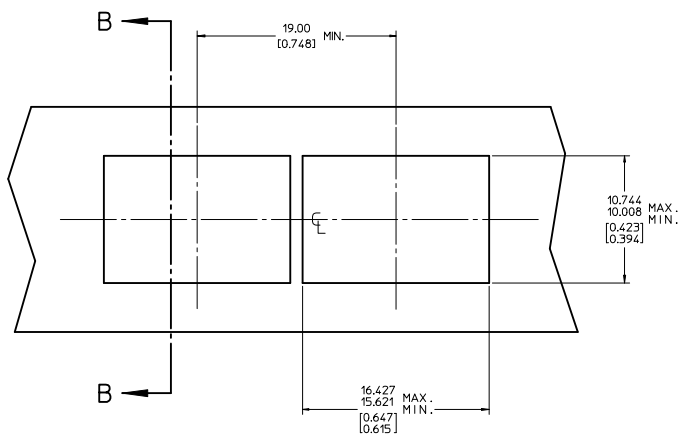
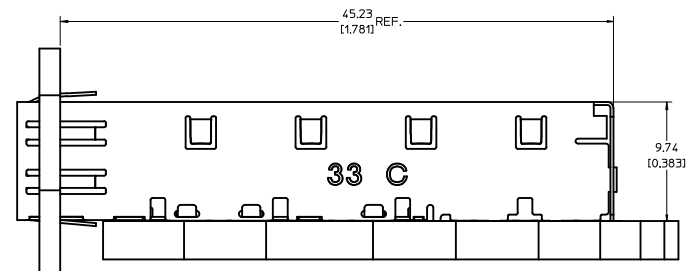


DETAIL 1
SCALE 10:1

DETAIL 1

REV DIMS-CAGE REV IEC NO: USY2010-0515 DRAWN/SECRET 2010/04/27 CHKD/K.LANITA 2010/04/27 APPR/K.LANITA 2010/05/04	QUALITY SYMBOLS	GENERAL TOLERANCES (UNLESS SPECIFIED)	DIMENSION STYLE	SCALE	DESIGN UNITS	THIRD ANGLE PROJECTION
	▽=0 ▽=0	mm INCH 4 PLACES ± --- ± --- 3 PLACES ± --- ± 0.005 2 PLACES ± 0.13 ± 0.01 1 PLACE ± 0.25 ± --- ANGULAR ± 1 °	MM/IN	8:1	METRIC	DRAWN BY DATE JRESENDE 2009/09/28 CHECKED BY DATE JRESENDE 2009/09/28 APPROVED BY DATE JRESENDE 2009/09/28
	DRAFT WHERE APPLICABLE MUST REMAIN WITHIN DIMENSIONS	MATERIAL NO.	DOCUMENT NO.	TITLE		SHEET NO.
	SIZE D	747370033	SD-74737-0033	SFP ONE PIECE CAGE PRESS-FIT (0.120 LEGS) W/ MODIFIED LATCH TANG		2 OF 3

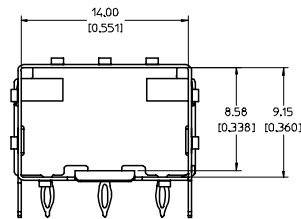
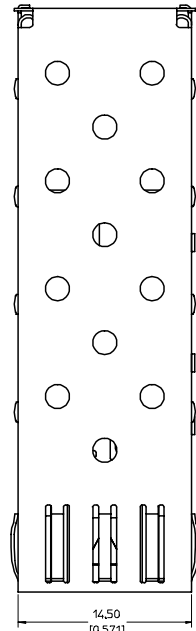
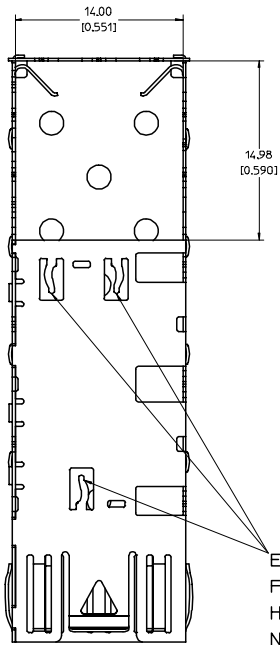
20 19 18 17 16 15 14 13 12 11 10 9 8 7 6 5 4 3 2 1



SECTION B-B

REV DIMS-CAGE REV IEC NO: USY2010-0515 DRAWN BY: CHYKOKI ANOTA CHECKED BY: APPR:KJANOTA DATE: 2010/04/27 DATE: 2010/05/04	QUALITY SYMBOLS	GENERAL TOLERANCES (UNLESS SPECIFIED)	DIMENSION STYLE	SCALE	DESIGN UNITS	THIRD ANGLE PROJECTION															
	▽=0 ▽=0	<table border="1"> <thead> <tr> <th></th> <th>mm</th> <th>INCH</th> </tr> </thead> <tbody> <tr> <td>4 PLACES</td> <td>±---</td> <td>±---</td> </tr> <tr> <td>3 PLACES</td> <td>±---</td> <td>±0.005</td> </tr> <tr> <td>2 PLACES</td> <td>±0.13</td> <td>±0.01</td> </tr> <tr> <td>1 PLACE</td> <td>±0.25</td> <td>±---</td> </tr> </tbody> </table> ANGULAR ± 1°		mm	INCH	4 PLACES	±---	±---	3 PLACES	±---	±0.005	2 PLACES	±0.13	±0.01	1 PLACE	±0.25	±---	MM/IN	5:1	METRIC	
		mm	INCH																		
	4 PLACES	±---	±---																		
3 PLACES	±---	±0.005																			
2 PLACES	±0.13	±0.01																			
1 PLACE	±0.25	±---																			
DESCRIPTION	DRAFT WHERE APPLICABLE MUST REMAIN WITHIN DIMENSIONS	DRAWN BY: JRESENDE CHECKED BY: JRESENDE APPROVED BY: JRESENDE DATE: 2009/09/28 DATE: 2009/09/28 DATE: 2009/09/28	TITLE	SFP ONE PIECE CAGE PRESS-FIT (0.120 LEGS) W/ MODIFIED LATCH TANG		MATERIAL NO: 747370033															
			DOCUMENT NO: SD-74737-0033	MOLEX INCORPORATED		SHEET NO: 3 OF 3															

19 18 17 16 15 14 13 12 11 10 9 8 7 6 5 4 3 2 1

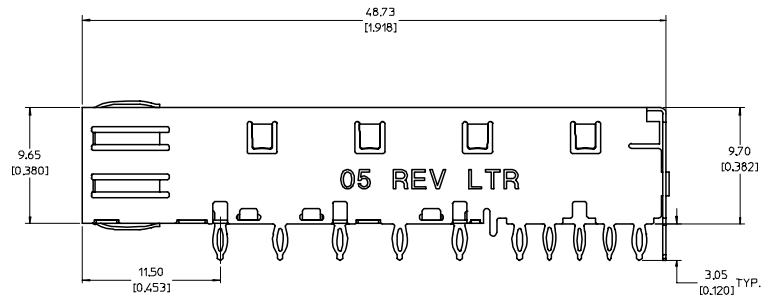
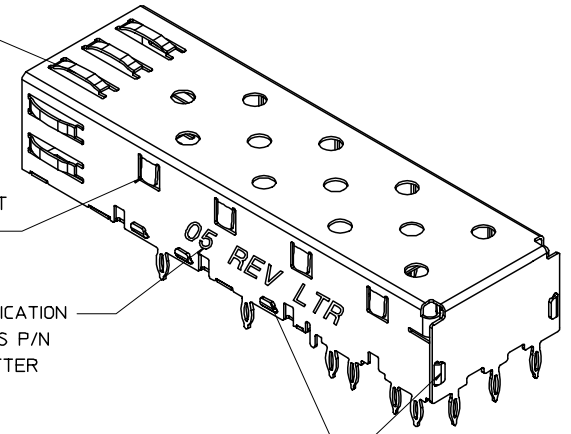


SPRING FINGER GASKET WITH TWO POINTS OF CONTACT. COMPLIES WITH (SFP) MSA BOARD AND BEZEL LOCATIONS.

TABS USED TO MOUNT LIGHT PIPE COVER

CAGE IDENTIFICATION LAST 2 DIGITS P/N AND REV LETTER (ex: 05 X)

ONE PIECE DESIGN SECURELY FASTENED



NOTES:

- PRESS FIT LEGS, 0.120 INCHES LONG. 157 (0.062) MINIMUM PCB THICKNESS.
- THIS CAGE IS FOR SINGLE SIDED USE ONLY.
- CAN BE USED WITH THE FOLLOWING LIGHT PIPE PART NUMBERS:

747260001 - LIGHT PIPE FROM BACK TO TOP
(REFER TO DOCUMENT SD-74726-001)

747260002 - LIGHT PIPE FROM SIDE TO TOP
(REFER TO DOCUMENT SD-74726-002)

4. MATERIAL: COPPER ALLOY
PLATING: PRE-PLATED WITH NICKEL

5. THIS PART MEETS THE RESTRICTION OF HAZARDOUS SUBSTANCES IN ELECTRICAL AND ELECTRONIC EQUIPMENT (ROHS) DIRECTIVE (2002/95/EC).

UPDATED 3D MODELS EC NO: USY2008-0866 DRAWN BY: 2007/10/05 CHECKED: 2007/10/09 APPROVED: 2007/10/23 DESCRIPTION:	QUALITY SYMBOLS	GENERAL TOLERANCES (UNLESS SPECIFIED)	DIMENSION STYLE	SCALE	DESIGN UNITS	THIRD ANGLE PROJECTION	
	$\nabla=0$ $\nabla=0$	mm INCH 4 PLACES ± --- ± --- 3 PLACES ± --- ± .005 2 PLACES ± 0.13 ± .01 1 PLACE ± 0.25 ± --- ANGULAR ± 1 °	MM/IN 5:1	DRAWN BY: KS IMONSO CHECKED BY: RMAHMOOD APPROVED BY: RMAHMOOD	DATE: 2005/09/12 DATE: 2006/12/20 DATE: 2006/12/20	METRIC	TITLE: SFP ONE PIECE CAGE PRESS-FIT (0.120 LEGS) NO EMI PINS MOLEX INCORPORATED
	DRAFT WHERE APPLICABLE MUST REMAIN WITHIN DIMENSIONS	MATERIAL NO. 747370005	DOCUMENT NO. SD-74737-005	SHEET NO. 1 OF 4			
	SIZE D	THIS DRAWING CONTAINS INFORMATION THAT IS PROPRIETARY TO MOLEX INCORPORATED AND SHOULD NOT BE USED WITHOUT WRITTEN PERMISSION					

20 19 18 17 16 15 14 13 12 11 10 9 8 7 6 5 4 3 2 1

M

L

K

J

I

H

G

F

E

D

C

B

A

M

L

K

J

I

H

G

F

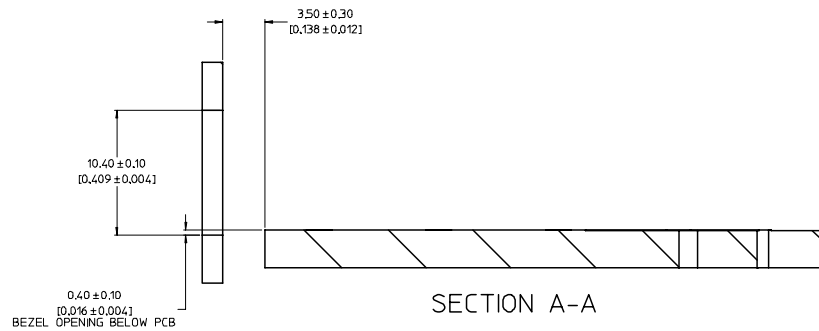
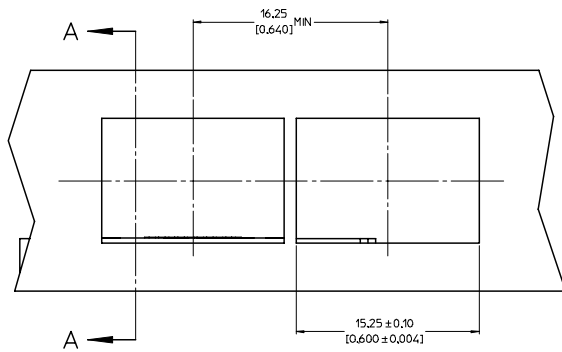
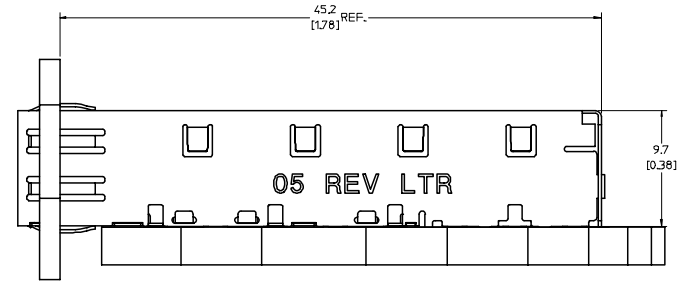
E

D

C

B

A



UPDATED 3D MODELS EC NO: USY2008-0860 DRAWN BY: TORWANKOJ CHECKED: TORWANKOJ APPROVED: TORWANKOJ DATE: 2007/10/09	QUALITY SYMBOLS	GENERAL TOLERANCES (UNLESS SPECIFIED)		DIMENSION STYLE		SCALE	DESIGN UNITS	THIRD ANGLE PROJECTION		
	▽=0 ▽=0	mm	INCH	MM/IN		5:1	METRIC			
		4 PLACES ± --- ± ---	3 PLACES ± --- ± .005	2 PLACES ± 0.13 ± .01	1 PLACE ± 0.25 ± ---	ANGULAR ± 1 °	DRAWN BY: KS IMONSO	DATE: 2005/09/12	TITLE: SFP ONE PIECE CAGE PRESS-FIT (0.120 LEGS) NO EMI PINS	
		DRAFT WHERE APPLICABLE MUST REMAIN WITHIN DIMENSIONS		MATERIAL NO: 747370005		APPROVED BY: RMAHMOOD	DATE: 2006/12/20	DOCUMENT NO: SD-74737-005		SHEET NO: 3 OF 4

19 18 17 16 15 14 13 12 11 10 9 8 7 6 5 4 3 2 1

