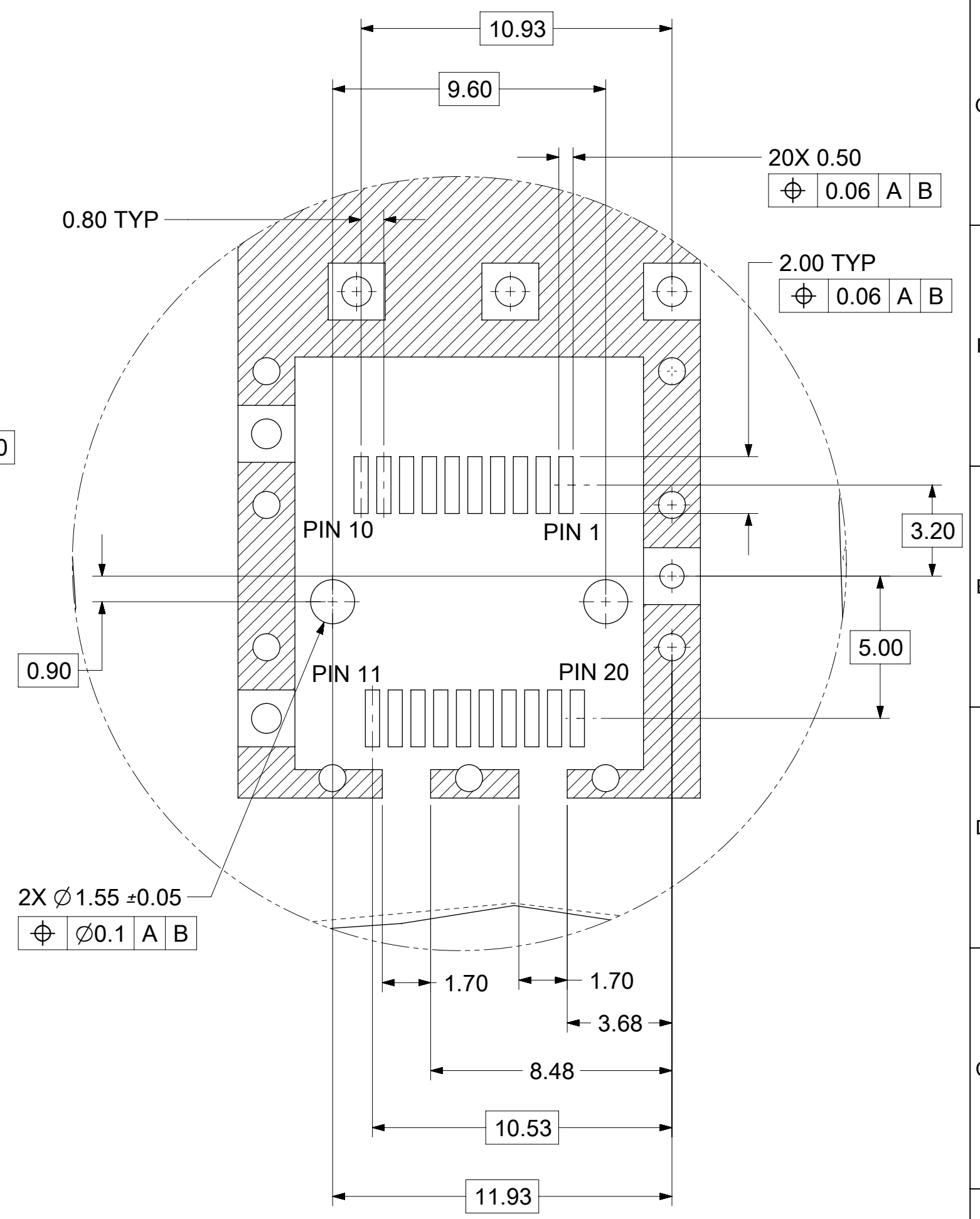
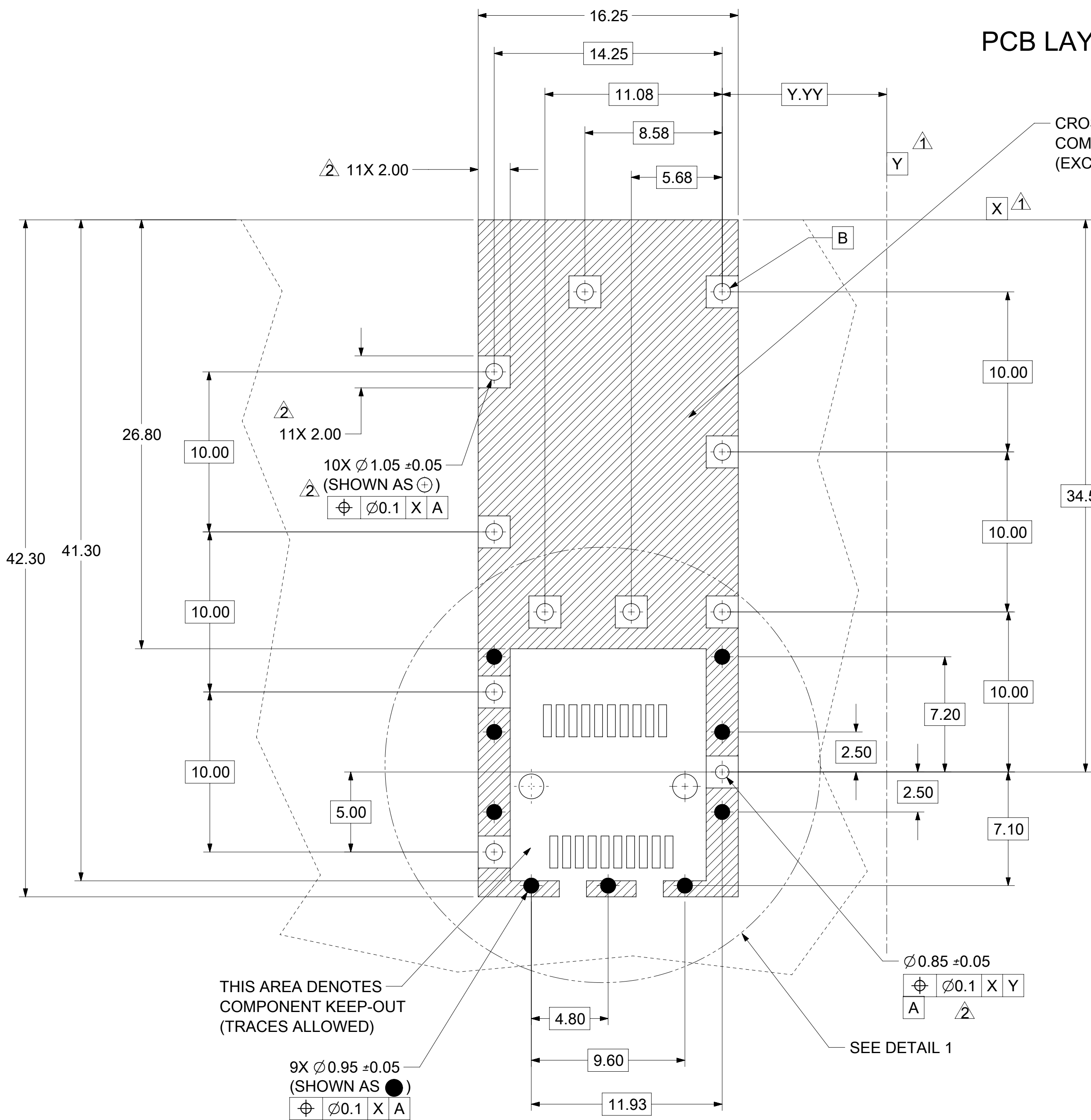


NOTES:

- PRESS FIT LEGS, 0.120 INCHES LONG 1.57 MINIMUM PCB THICKNESS.
- THIS CAGE IS FOR SINGLE SIDED USE ONLY.
- CAN BE USED WITH THE FOLLOWING LIGHT PIPE PART NUMBERS:
747260001 - LIGHT PIPE FROM BACK TO TOP REFER TO DOCUMENT SD-747260001
747260002 - LIGHT PIPE FROM SIDE TO TOP REFER TO DOCUMENT SD-747260002
- MATERIAL: COPPER ALLOY
PLATING: PRE-PLATED WITH NICKEL
- NO RoHS EXEMPTIONS

THIS DRAWING CONTAINS INFORMATION THAT IS PROPRIETARY TO MOLEX ELECTRONIC TECHNOLOGIES, LLC AND SHOULD NOT BE USED WITHOUT WRITTEN PERMISSION											
SEE REVISION TABLE	EC NO: 116814	2017/04/06	GENERAL TOLERANCES (UNLESS SPECIFIED)		DIMENSION UNITS	SCALE	molex				
	DRWN: PGSHETTY	2017/05/11	ANGULAR TOL $\pm 1.0^\circ$		MM	3.5:1					
	CHKD: DSUN15	2017/05/11	4 PLACES	\pm	DRWN BY	DATE	SFP ONE PIECE CAGE PRESS-FIT (0.120 LEGS)				
	REV: APPR: RCHEN08		3 PLACES	\pm	CHKD BY	DATE	PRODUCT CUSTOMER DRAWING				
			2 PLACES	± 0.13	APPR BY	DATE	SERIES	MATERIAL NUMBER	CUSTOMER		
		1 PLACE	± 0.25	RCHEN08	2017/05/15	74737	747370009				
		0 PLACES	\pm	DRAFT WHERE APPLICABLE MUST REMAIN WITHIN DIMENSIONS		DRAWING SIZE	THIRD ANGLE PROJECTION	DOCUMENT NUMBER	DOC TYPE	DOC PART	SHEET NUMBER
D					C	C	747370009	PSD	ASY	1 OF 4	

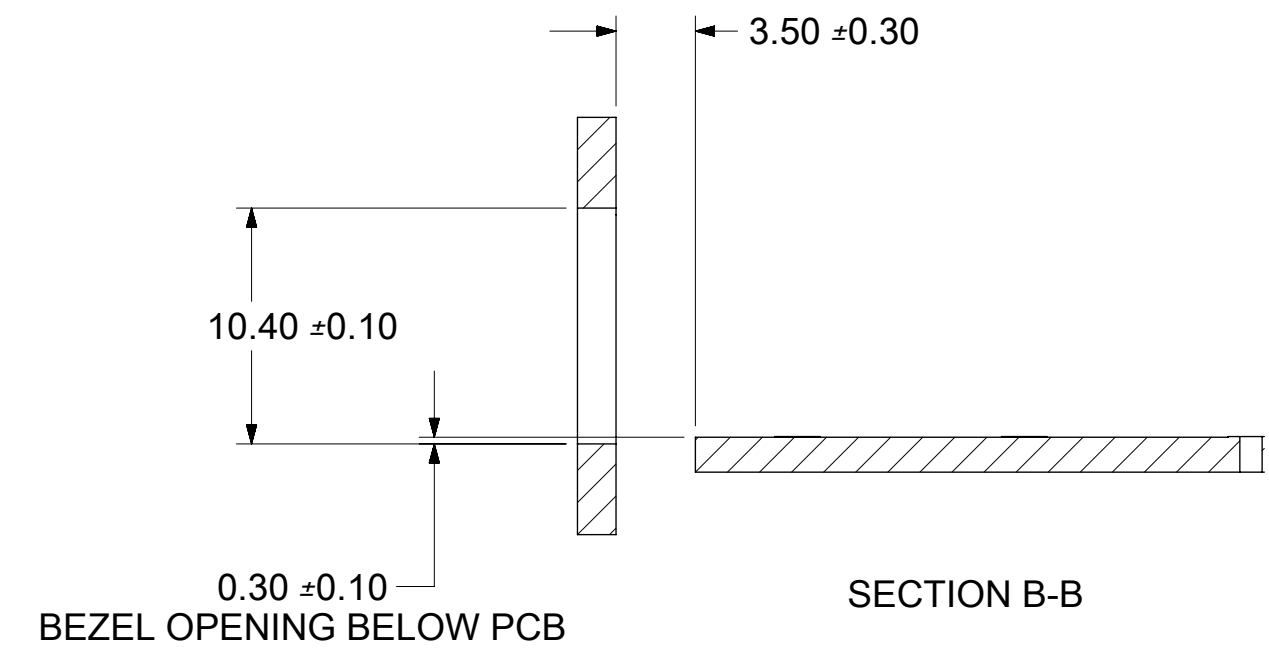
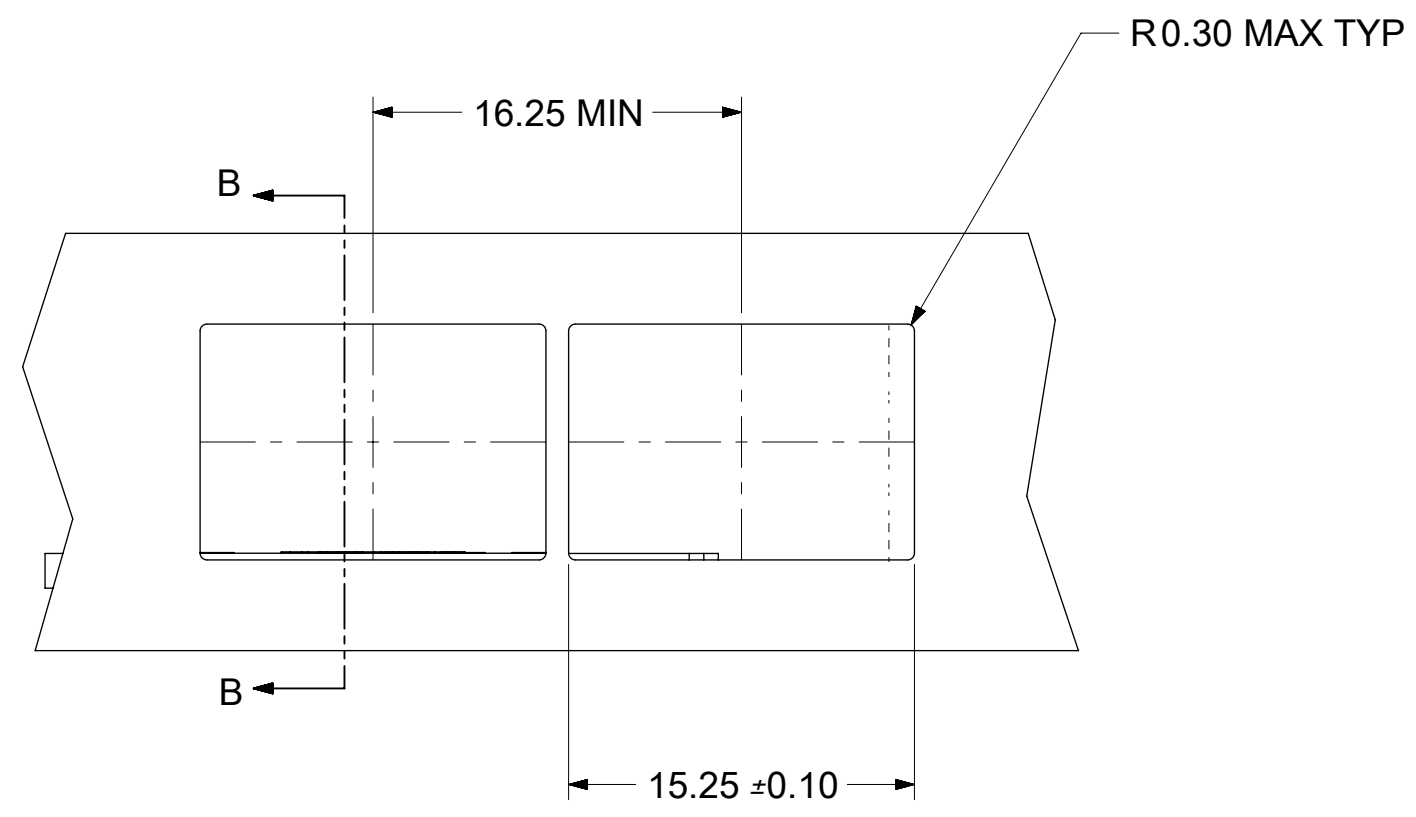
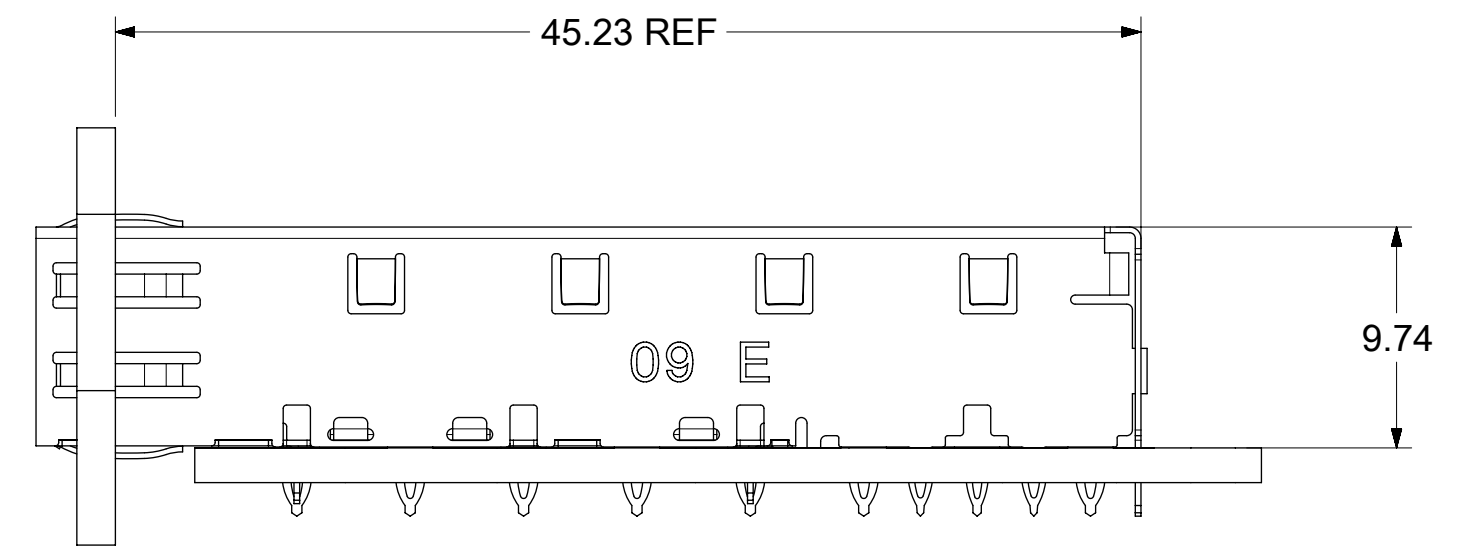
PCB LAYOUT FOR SINGLE SIDE MOUNT



DETAIL 1
SCALE 6:1
HOST CONNECTOR DETAIL

- DATUM AND BASIC DIMENSIONS ESTABLISHED BY CUSTOMER.
- PADS AND VIAS ARE CHASSIS GROUND.
- HOLE LAYOUT SHOWN IS FOR SINGLE SIDED MOUNTING ONLY.
- CONNECTOR PAD LAYOUT PER SFP MSA, WILL ACCOMODATE MOLEX CONNECTOR SERIES 74441 OR EQUIVALENT.

THIS DRAWING CONTAINS INFORMATION THAT IS PROPRIETARY TO MOLEX ELECTRONIC TECHNOLOGIES, LLC AND SHOULD NOT BE USED WITHOUT WRITTEN PERMISSION															
SEE REVISION TABLE	EC NO: 116814	2017/04/06	GENERAL TOLERANCES (UNLESS SPECIFIED)		DIMENSION UNITS	SCALE									
	DRWN: PGSHETTY	2017/05/11	ANGULAR TOL ± 1.0 °		MM	5:1									
	CHKD: DSUN15	2017/05/15	4 PLACES	±	DRWN BY	DATE	SFP ONE PIECE CAGE PRESS-FIT (0.120 LEGS)								
	REV	APPR: RCHEN08	2 PLACES	± 0.13	CHK'D BY	DATE	PRODUCT CUSTOMER DRAWING								
	D		1 PLACE	± 0.25	APPR BY	DATE	SERIES MATERIAL NUMBER CUSTOMER								
		0 PLACES	±	RCHEN08	2017/05/15	DRAWING SIZE		THIRD ANGLE PROJECTION			DOCUMENT NUMBER		DOC TYPE	DOC PART	SHEET NUMBER
		DRAFT WHERE APPLICABLE MUST REMAIN WITHIN DIMENSIONS		C			74737		747370009		747370009	PSD	ASY	2 OF 4	



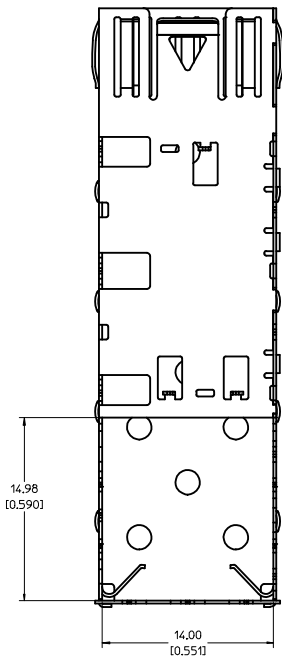
THIS DRAWING CONTAINS INFORMATION THAT IS PROPRIETARY TO MOLEX ELECTRONIC TECHNOLOGIES, LLC AND SHOULD NOT BE USED WITHOUT WRITTEN PERMISSION

SEE REVISION TABLE	EC NO: 116814	2017/04/06	GENERAL TOLERANCES (UNLESS SPECIFIED)	DIMENSION UNITS	SCALE	molex [®]			
	DRWN: PGSHETTY	2017/05/11		MM	3:1				
	CHKD: DSUN15	2017/05/15		ANGULAR TOL ± 1.0 °	DRWN BY		DATE		
	REV / APPR: RCHEN08			4 PLACES ±	PGSHETTY		2017/04/06		
			3 PLACES ±	CHKD BY	DATE	SFP ONE PIECE CAGE PRESS-FIT (0.120 LEGS)			
			2 PLACES ± 0.13	DSUN15	2017/05/11				
			1 PLACE ± 0.25	APPR BY	DATE				
			0 PLACES ±	RCHEN08	2017/05/15				
			DRAFT WHERE APPLICABLE MUST REMAIN WITHIN DIMENSIONS	DRAWING SIZE	THIRD ANGLE PROJECTION	PRODUCT CUSTOMER DRAWING			
				C		SERIES	MATERIAL NUMBER	CUSTOMER	
						74737	747370009		
						DOCUMENT NUMBER	PSD	DOC PART	SHEET NUMBER
						747370009	ASY	3 OF 4	

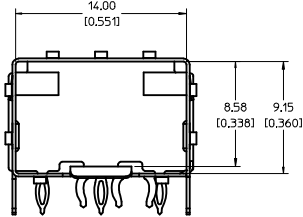
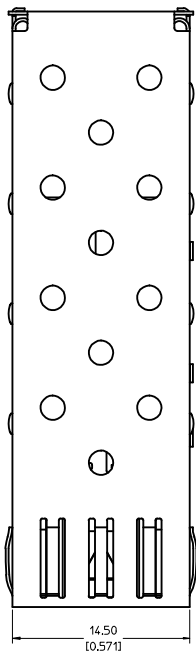
REV	DATE	DESCRIPTION
A	2006/11/30	INITIAL RELEASE
B	2007/01/23	[1] CHANGED MODULE EJECT FEATURE TOL FROM +/- 1DEG TO +/-5DEG; [2] CHANGED EJECT ARM ANGLE TOL FROM +/-1DEG TO 50DEG MIN; [3] CHANGED EMI SPRING FINGER OVERLAP FROM 0.21MM TO 0.01MM MIN; [4] ADDED DIM TO LEGS: OVERALL LENGTH, LENGTH FROM TIP TO SLOT, AND SLOT LENGTH.; [5] DELETED COMMENTS SECTION FROM REV CHART.; [6] ADDED "REF" TO DIM K2 ON SHEET 2.
C	2007/04/25	[1] ADDED REV SHEET; [2] UPDATED REV NOTES A-B; [3] UPDATD DRAWING TO REFLECT CHG'S MADE TO EM-74737-009-ASSY REV C; [4] ON SHT1 ROTATED BTM VIEW 180 DEGREES.
D	2017/04/05	REMASTERED FROM SD-74737-009 REV_C TO 747370009 PSD ASY REV_D IN NX SHEET 2 : F1 : ADDED TYP TO THE DIM 2.00 SHEET 3 : E7 : ADDED DIM R0.3 MAX TYP

THIS DRAWING CONTAINS INFORMATION THAT IS PROPRIETARY TO MOLEX ELECTRONIC TECHNOLOGIES, LLC AND SHOULD NOT BE USED WITHOUT WRITTEN PERMISSION

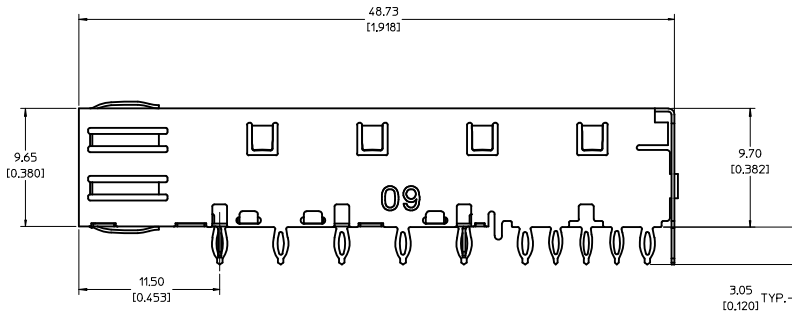
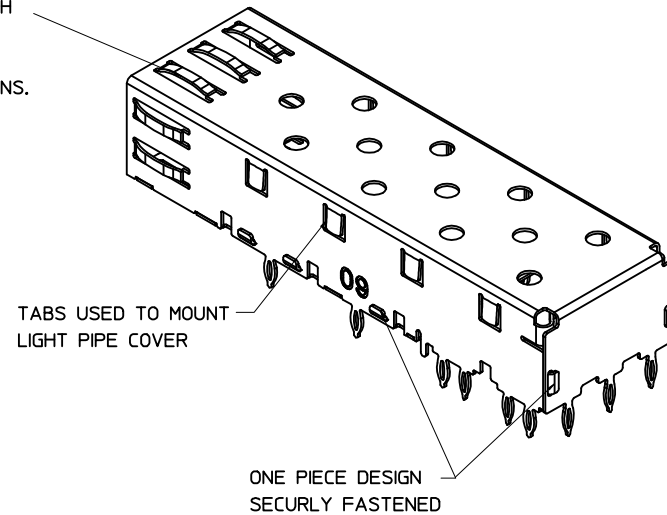
SEE REVISION TABLE	EC NO: 116814	2017/04/06	GENERAL TOLERANCES (UNLESS SPECIFIED)	DIMENSION UNITS	SCALE	molex SFP ONE PIECE CAGE PRESS-FIT (0.120 LEGS)	
	DRWN: PGSHETTY	2017/05/11		MM	1:1		
	CHKD: DSUN15	2017/05/15		ANGULAR TOL ± 1.0 °	DRWN BY		DATE
	REV / APPR: RCHEN08			4 PLACES ±	PGSHETTY		2017/04/06
				3 PLACES ±	CHKD BY		DATE
				2 PLACES ± 0.13	DSUN15		2017/05/11
				1 PLACE ± 0.25	APPR BY		DATE
				0 PLACES ±	RCHEN08		2017/05/15
				DRAFT WHERE APPLICABLE MUST REMAIN WITHIN DIMENSIONS	DRAWING SIZE		THIRD ANGLE PROJECTION
					C		
SERIES		MATERIAL NUMBER	CUSTOMER		PRODUCT CUSTOMER DRAWING		
74737		747370009					
DOCUMENT NUMBER		DOC TYPE	DOC PART	SHEET NUMBER			
747370009		PSD	ASY	4 OF 4			



BOTTOM VIEW



SPRING FINGER GASKET WITH TWO POINTS OF CONTACT. COMPLIES WITH (SFP) MSA BOARD AND BEZEL LOCATIONS.



NOTES:

1. PRESS FIT LEGS, 0.120 INCHES LONG. 1.57 [0.062] MINIMUM PCB THICKNESS.
2. THIS CAGE IS FOR SINGLE SIDED USE ONLY.
3. CAN BE USED WITH THE FOLLOWING LIGHT PIPE PART NUMBERS:

747260001 - LIGHT PIPE FROM BACK TO TOP
(REFER TO DOCUMENT SD-74726-001)

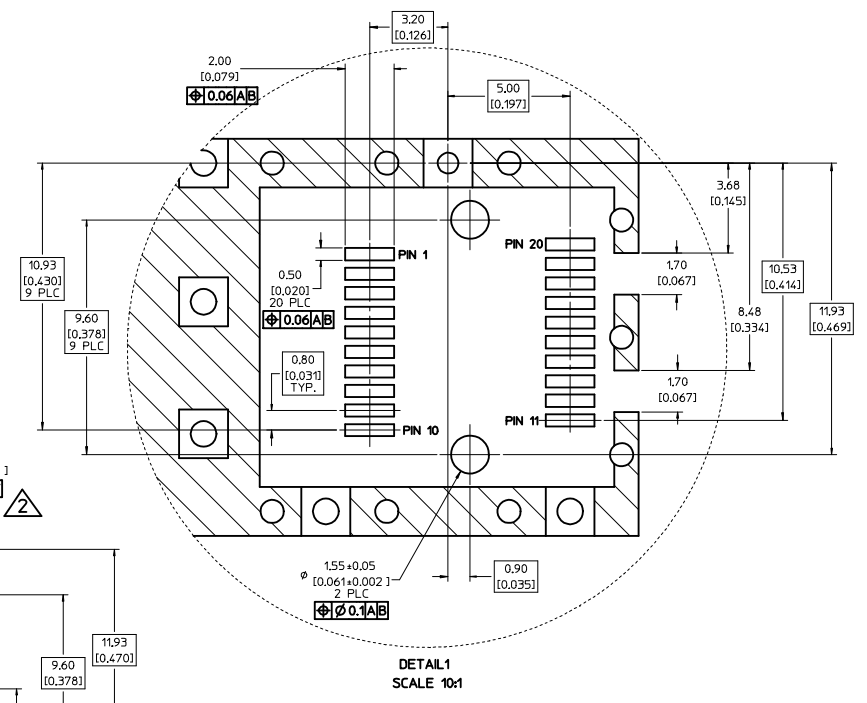
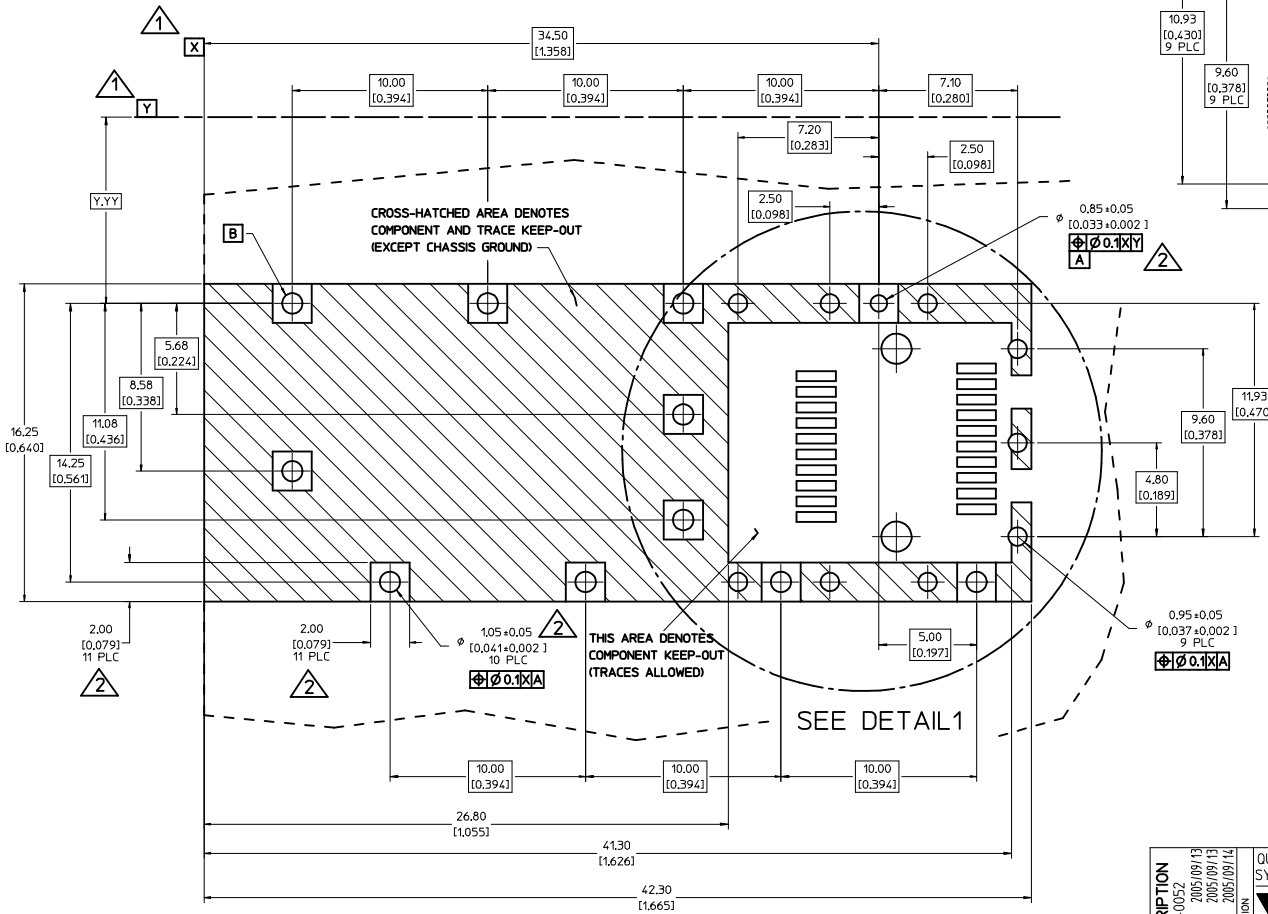
747260002 - LIGHT PIPE FROM SIDE TO TOP
(REFER TO DOCUMENT SD-74726-002)

4. MATERIAL: COPPER ALLOY
PLATING: PRE-PLATED WITH NICKEL

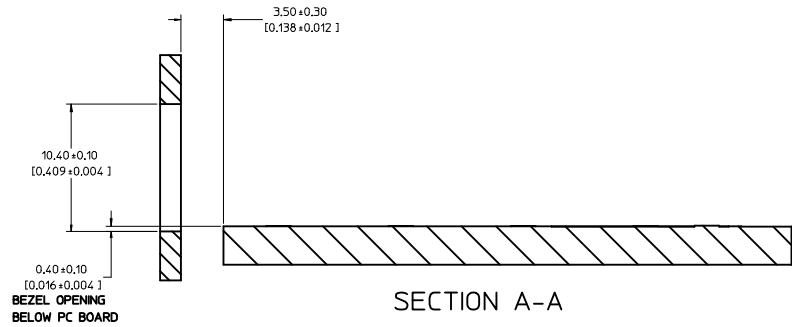
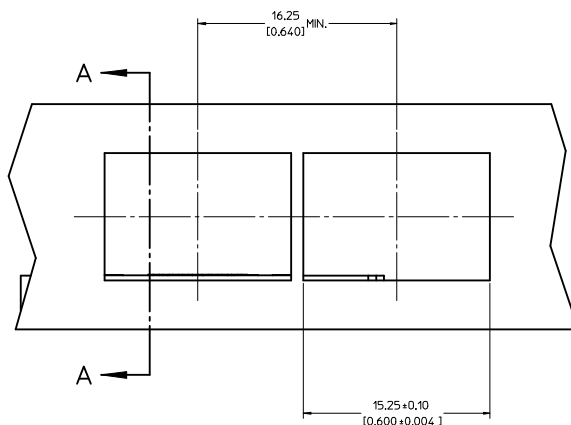
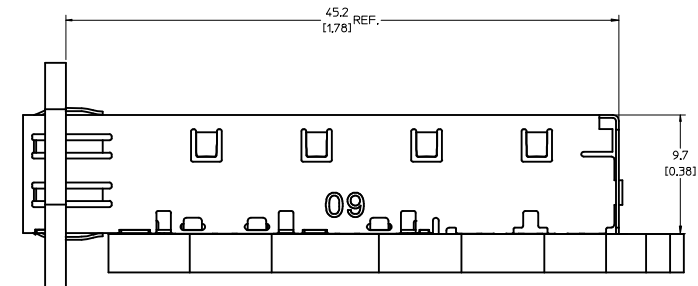
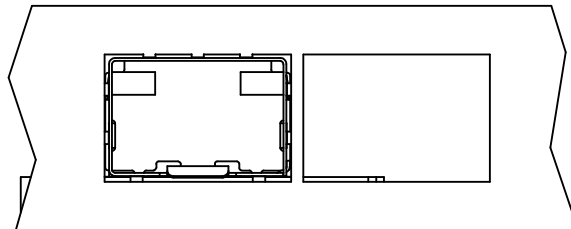
5. THIS PART MEETS THE RESTRICTION OF HAZARDOUS SUBSTANCES IN ELECTRICAL AND ELECTRONIC EQUIPMENT (ROHS) DIRECTIVE (2002/95/EC).

ENTER DESCRIPTION EC NO: USY2006-0052 DRAWN BY: KSI MONSON 2005/09/13 CHECKED BY: CHYD BRUSSELL 2005/09/13 APPROVED BY: BRUSSELL 2005/09/14	QUALITY SYMBOLS ▽=0 ▽=0	GENERAL TOLERANCES (UNLESS SPECIFIED)		DIMENSION STYLE MM/IN	SCALE 5:1	DESIGN UNITS METRIC	THIRD ANGLE PROJECTION		
		4 PLACES ±--- ±---	3 PLACES ±--- ±.005	2 PLACES ±0.13 ±.01	1 PLACE ±0.25 ±---	DRAWN BY: KSI MONSON 2005/09/12 CHECKED BY: BRUSSELL 2005/09/12 APPROVED BY: BRUSSELL 2005/09/12			
		ANGULAR ± 1°		DRAFT WHERE APPLICABLE MUST REMAIN WITHIN DIMENSIONS		MATERIAL NO: 747370009 DOCUMENT NO: SD-74737-0009			
		MOLEX INCORPORATED		SHEET NO. 1 OF 3		THIS DRAWING CONTAINS INFORMATION THAT IS PROPRIETARY TO MOLEX INCORPORATED AND SHOULD NOT BE USED WITHOUT WRITTEN PERMISSION			

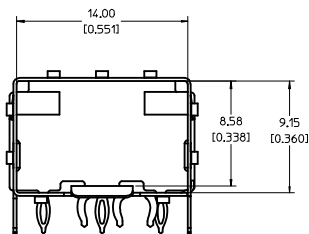
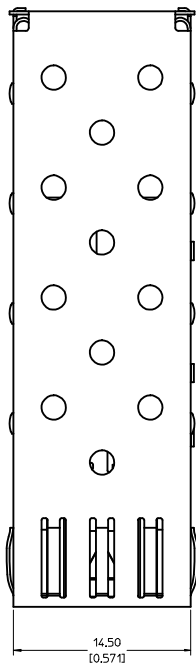
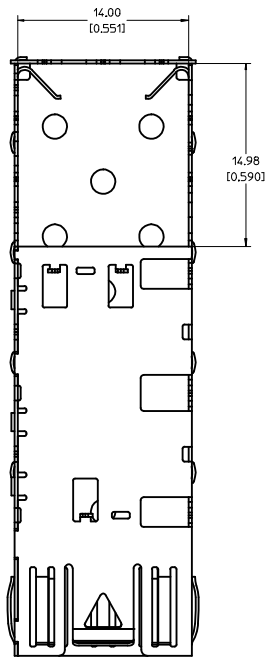
- 1 DATUM AND BASIC DIMENSIONS ESTABLISHED BY CUSTOMER.
- 2 PADS AND VIAS ARE CHASSIS GROUND.
- 3 HOLE LAYOUT SHOWN IS FOR SINGLE SIDED MOUNTING ONLY.
- 4 CONNECTOR PAD LAYOUT PER SFP MSA, WILL ACCOMMODATE MOLEX CONNECTOR SERIES 74441 OR EQUIVALENT.



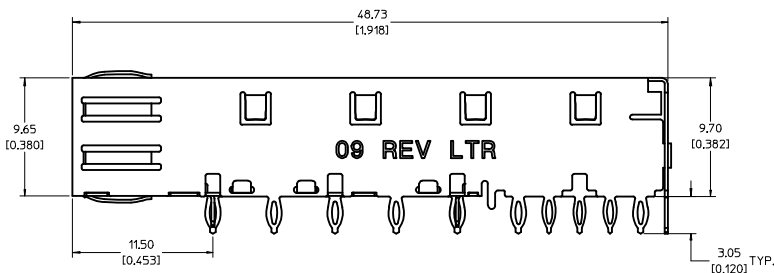
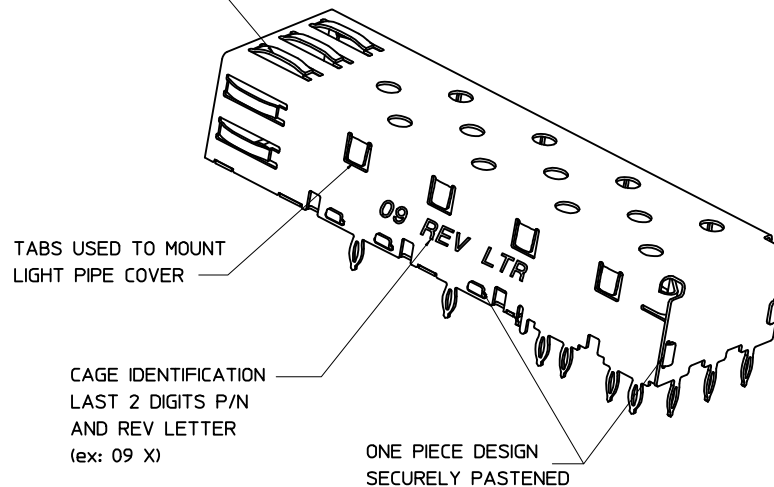
ENTER DESCRIPTION IEC NO.: USY2006-0052 DRAWN BY: KSI MONSO 2005/09/13 CHECKED BY: CHYD BRUSSELL 2005/09/13 APPROVED BY: APPR: BRUSSELL 2005/09/14	QUALITY SYMBOLS	GENERAL TOLERANCES (UNLESS SPECIFIED)	DIMENSION STYLE	SCALE	DESIGN UNITS	THIRD ANGLE PROJECTION	
	$\nabla=0$ $\nabla=0$	mm INCH 4 PLACES ± --- ± --- 3 PLACES ± --- ± .005 2 PLACES ± 0.13 ± .01 1 PLACE ± 0.25 ± --- ANGULAR ± 1 °	MM/IN	8:1	METRIC		
	DRAFT WHERE APPLICABLE MUST REMAIN WITHIN DIMENSIONS	DRAWN BY: KSI MONSO 2005/09/12 CHECKED BY: BRUSSELL 2005/09/12 APPROVED BY: BRUSSELL 2005/09/12	MATERIAL NO.: 747370009 DOCUMENT NO.: SD-74737-0009	TITLE: SFP ONE PIECE CAGE PRESS-FIT (0.120 LEGS)		MOLEX INCORPORATED	SHEET NO.: 2 OF 3
	SIZE: D	THIS DRAWING CONTAINS INFORMATION THAT IS PROPRIETARY TO MOLEX INCORPORATED AND SHOULD NOT BE USED WITHOUT WRITTEN PERMISSION					



ENTER DESCRIPTION IEC NO: USY2006-0052 DRAWN BY: KSI MONSON 2005/09/13 CHECKED BY: CHYD BRUSSELL 2005/09/13 APPROVED BY: APPR: BRUSSELL 2005/09/14	QUALITY SYMBOLS ▽=0 ▽=0	GENERAL TOLERANCES (UNLESS SPECIFIED)		DIMENSION STYLE MM/IN	SCALE 5:1	DESIGN UNITS METRIC	THIRD ANGLE PROJECTION		
		4 PLACES ± --- ± --- 3 PLACES ± --- ± .005 2 PLACES ± 0.13 ± .01 1 PLACE ± 0.25 ± ---	mm INCH	DRAWN BY: KSI MONSON DATE: 2005/09/12	CHECKED BY: BRUSSELL DATE: 2005/09/12	TITLE SFP ONE PIECE CAGE PRESS-FIT (0.120 LEGS)			
		ANGULAR ± 1 °	APPROVED BY: BRUSSELL DATE: 2005/09/12	MATERIAL NO. 747370009					
		DRAFT WHERE APPLICABLE MUST REMAIN WITHIN DIMENSIONS	SIZE D	DOCUMENT NO. SD-74737-0009		SHEET NO. 3 OF 3			



SPRING FINGER GASKET WITH TWO POINTS OF CONTACT. COMPLIES WITH (SFP) MSA BOARD AND BEZEL LOCATIONS.



NOTES:

- PRESS FIT LEGS, 0.120 INCHES LONG. 1.57 [0.062] MINIMUM PCB THICKNESS.
- THIS CAGE IS FOR SINGLE SIDED USE ONLY.
- CAN BE USED WITH THE FOLLOWING LIGHT PIPE PART NUMBERS:

747260001 - LIGHT PIPE FROM BACK TO TOP
(REFER TO DOCUMENT SD-74726-001)

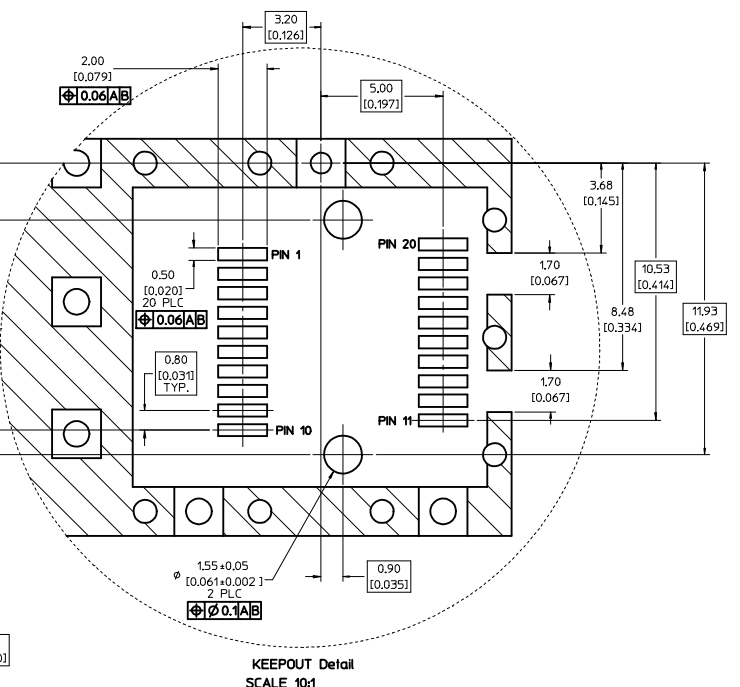
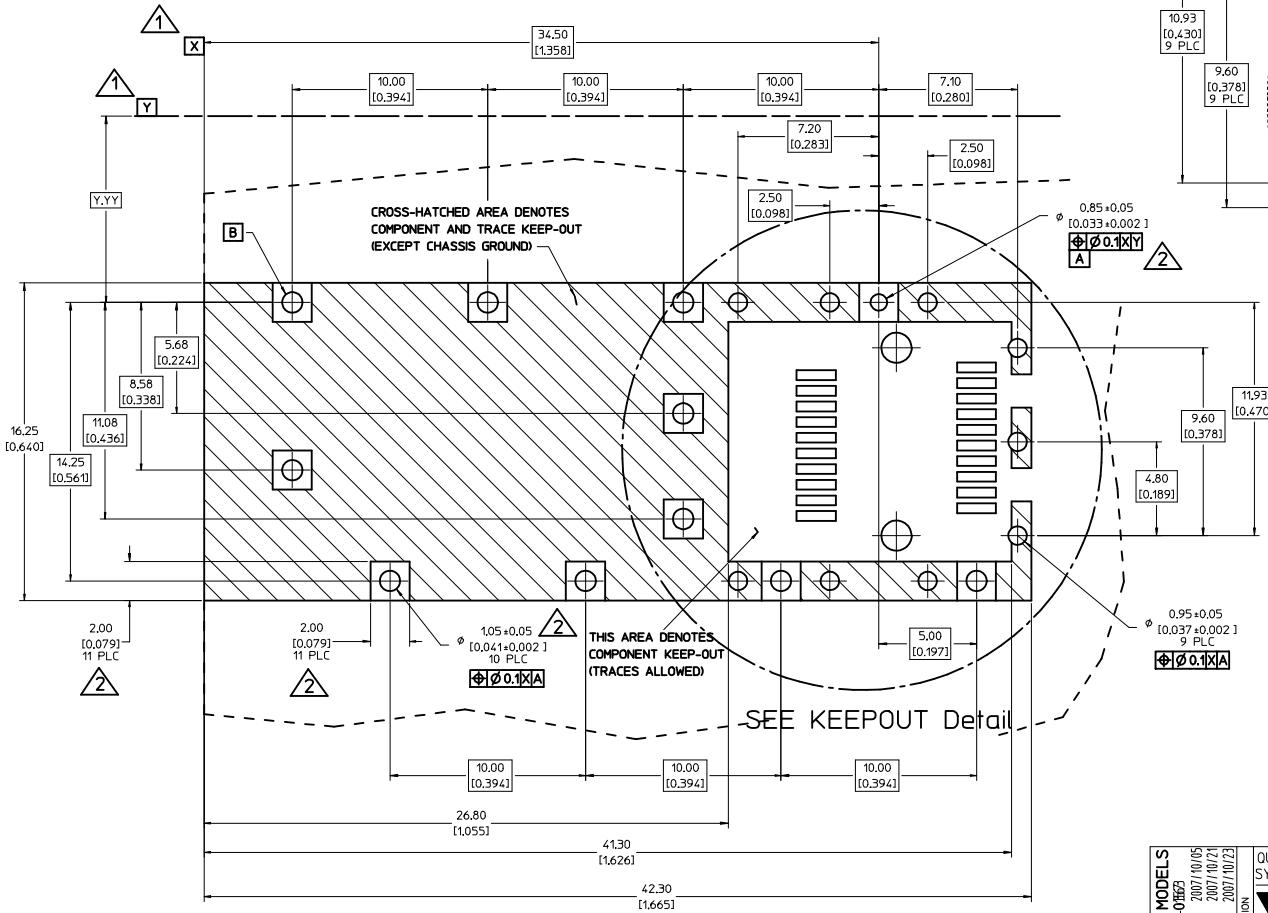
747260002 - LIGHT PIPE FROM SIDE TO TOP
(REFER TO DOCUMENT SD-74726-002)

4. MATERIAL: COPPER ALLOY
PLATING: PRE-PLATED WITH NICKEL

5. THIS PART MEETS THE RESTRICTION OF HAZARDOUS SUBSTANCES IN ELECTRICAL AND ELECTRONIC EQUIPMENT (ROHS) DIRECTIVE (2002/95/EC).

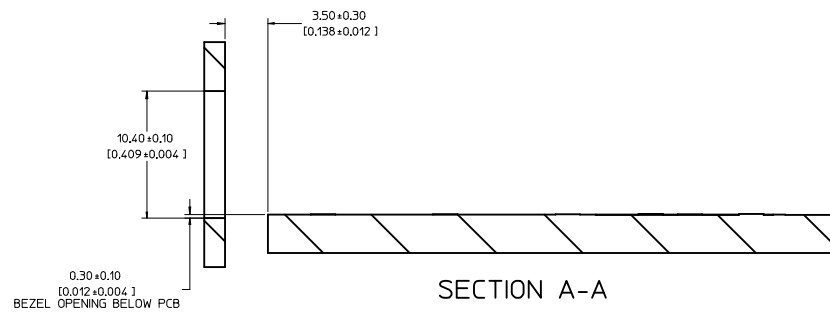
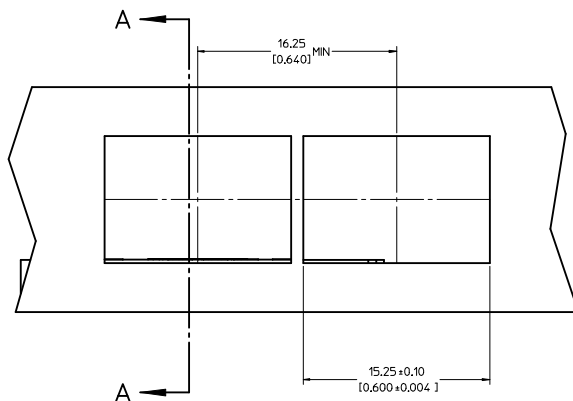
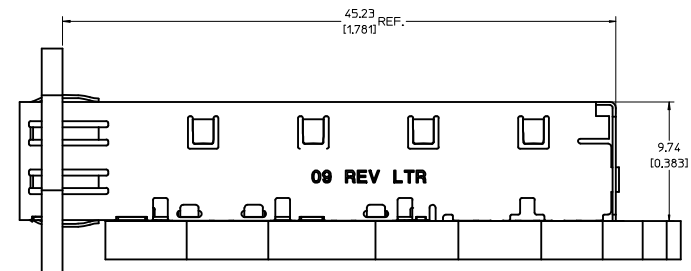
UPDATED 3D MODELS EC NO: USY2008-018623 DRAWN BY: CCOX 2007/10/05 CHKD: 2007/10/21 APPR: RMAHMOOD 2007/10/23	QUALITY SYMBOLS	GENERAL TOLERANCES (UNLESS SPECIFIED)	DIMENSION STYLE	SCALE	DESIGN UNITS	THIRD ANGLE PROJECTION																																												
	$\nabla=0$ $\nabla=0$	<table border="1"> <thead> <tr> <th></th> <th>mm</th> <th>INCH</th> </tr> </thead> <tbody> <tr> <td>4 PLACES</td> <td>±---</td> <td>±---</td> </tr> <tr> <td>3 PLACES</td> <td>±---</td> <td>±.005</td> </tr> <tr> <td>2 PLACES</td> <td>±0.13</td> <td>±.01</td> </tr> <tr> <td>1 PLACE</td> <td>±0.25</td> <td>±---</td> </tr> </tbody> </table>		mm	INCH	4 PLACES	±---	±---	3 PLACES	±---	±.005	2 PLACES	±0.13	±.01	1 PLACE	±0.25	±---	MM/IN	5:1	METRIC																														
		mm	INCH																																															
	4 PLACES	±---	±---																																															
3 PLACES	±---	±.005																																																
2 PLACES	±0.13	±.01																																																
1 PLACE	±0.25	±---																																																
<table border="1"> <thead> <tr> <th>DATE</th> <th>DESCRIPTION</th> </tr> </thead> <tbody> <tr> <td>2006/11/22</td> <td>DATE</td> </tr> <tr> <td>2006/11/22</td> <td>DATE</td> </tr> <tr> <td>DATE</td> <td>DATE</td> </tr> </tbody> </table>	DATE	DESCRIPTION	2006/11/22	DATE	2006/11/22	DATE	DATE	DATE	<table border="1"> <thead> <tr> <th>DATE</th> <th>DATE</th> </tr> </thead> <tbody> <tr> <td>2006/11/22</td> <td>2006/11/22</td> </tr> <tr> <td>DATE</td> <td>DATE</td> </tr> </tbody> </table>	DATE	DATE	2006/11/22	2006/11/22	DATE	DATE	<table border="1"> <thead> <tr> <th>DATE</th> <th>DATE</th> </tr> </thead> <tbody> <tr> <td>2006/11/22</td> <td>2006/11/22</td> </tr> <tr> <td>DATE</td> <td>DATE</td> </tr> </tbody> </table>	DATE	DATE	2006/11/22	2006/11/22	DATE	DATE	<table border="1"> <thead> <tr> <th>DATE</th> <th>DATE</th> </tr> </thead> <tbody> <tr> <td>2006/11/22</td> <td>2006/11/22</td> </tr> <tr> <td>DATE</td> <td>DATE</td> </tr> </tbody> </table>	DATE	DATE	2006/11/22	2006/11/22	DATE	DATE	<table border="1"> <thead> <tr> <th>DATE</th> <th>DATE</th> </tr> </thead> <tbody> <tr> <td>2006/11/22</td> <td>2006/11/22</td> </tr> <tr> <td>DATE</td> <td>DATE</td> </tr> </tbody> </table>	DATE	DATE	2006/11/22	2006/11/22	DATE	DATE	<table border="1"> <thead> <tr> <th>DATE</th> <th>DATE</th> </tr> </thead> <tbody> <tr> <td>2006/11/22</td> <td>2006/11/22</td> </tr> <tr> <td>DATE</td> <td>DATE</td> </tr> </tbody> </table>	DATE	DATE	2006/11/22	2006/11/22	DATE	DATE	<table border="1"> <thead> <tr> <th>DATE</th> <th>DATE</th> </tr> </thead> <tbody> <tr> <td>2006/11/22</td> <td>2006/11/22</td> </tr> <tr> <td>DATE</td> <td>DATE</td> </tr> </tbody> </table>	DATE	DATE	2006/11/22	2006/11/22	DATE	DATE
DATE	DESCRIPTION																																																	
2006/11/22	DATE																																																	
2006/11/22	DATE																																																	
DATE	DATE																																																	
DATE	DATE																																																	
2006/11/22	2006/11/22																																																	
DATE	DATE																																																	
DATE	DATE																																																	
2006/11/22	2006/11/22																																																	
DATE	DATE																																																	
DATE	DATE																																																	
2006/11/22	2006/11/22																																																	
DATE	DATE																																																	
DATE	DATE																																																	
2006/11/22	2006/11/22																																																	
DATE	DATE																																																	
DATE	DATE																																																	
2006/11/22	2006/11/22																																																	
DATE	DATE																																																	
DATE	DATE																																																	
2006/11/22	2006/11/22																																																	
DATE	DATE																																																	
	DRAFT WHERE APPLICABLE MUST REMAIN WITHIN DIMENSIONS	MATERIAL NO.	747370009	DOCUMENT NO.	SD-74737-009	SHEET NO.	1 OF 4																																											
		THIS DRAWING CONTAINS INFORMATION THAT IS PROPRIETARY TO MOLEX INCORPORATED AND SHOULD NOT BE USED WITHOUT WRITTEN PERMISSION																																																

- 1 DATUM AND BASIC DIMENSIONS ESTABLISHED BY CUSTOMER.
- 2 PADS AND VIAS ARE CHASSIS GROUND.
- 3 HOLE LAYOUT SHOWN IS FOR SINGLE SIDED MOUNTING ONLY.
- 4 CONNECTOR PAD LAYOUT PER SFP MSA, WILL ACCOMMODATE MOLEX CONNECTOR SERIES 74441 OR EQUIVALENT.



UPDATED 3D MODELS EC NO: USY2008-01853 DRAWN BY: CCOX CHYK: 2007/10/21 APPR: RMAHMOOD 2007/10/23	QUALITY SYMBOLS	GENERAL TOLERANCES (UNLESS SPECIFIED)	DIMENSION STYLE	SCALE	DESIGN UNITS	THIRD ANGLE PROJECTION
	$\nabla=0$ $\nabla=0$	mm INCH 4 PLACES ± --- ± --- 3 PLACES ± --- ± .005 2 PLACES ± 0.13 ± .01 1 PLACE ± 0.25 ± --- ANGULAR ± 1°	MM/IN	8:1	METRIC	
	DRAFT WHERE APPLICABLE MUST REMAIN WITHIN DIMENSIONS	DRAWN BY: CCOX DATE: 2006/11/22 CHECKED BY: RMAHMOOD DATE: 2006/11/22 APPROVED BY:	TITLE	SFP ONE PIECE CAGE PRESS-FIT (0.120 LEGS)		
		MATERIAL NO: 747370009 DOCUMENT NO: SD-74737-009	MOLEX INCORPORATED		SHEET NO: 2 OF 4	

20 19 18 17 16 15 14 13 12 11 10 9 8 7 6 5 4 3 2 1

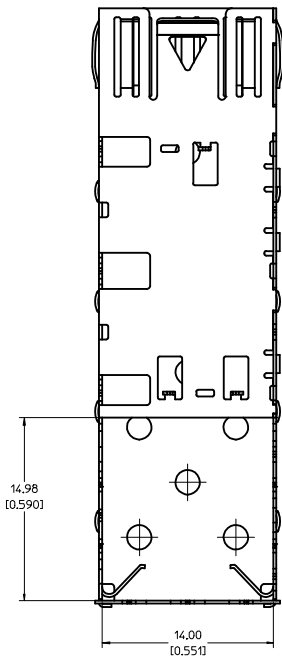


UPDATED 3D MODELS E.C. NO.: USY2008-01883 DRAWN BY: CCOX 2007/10/05 CHYK: 2007/10/21 APPROVED BY: APPR:RMAHMOOD 2007/10/23	QUALITY SYMBOLS	GENERAL TOLERANCES (UNLESS SPECIFIED)		DIMENSION STYLE	SCALE	DESIGN UNITS	THIRD ANGLE PROJECTION	
	▽=0 ▽=0	mm	INCH	MM/IN	5:1	METRIC		
		4 PLACES ± --- ± ---	3 PLACES ± --- ± .005	2 PLACES ± 0.13 ± .01	1 PLACE ± 0.25 ± ---	DRAWN BY: CCOX DATE: 2006/11/22 CHECKED BY: RMAHMOOD DATE: 2006/11/22 APPROVED BY: DATE:		TITLE: SFP ONE PIECE CAGE PRESS-FIT (0.120 LEGS) MOLEX INCORPORATED
		ANGULAR ± 1°		MATERIAL NO.: 747370009 DOCUMENT NO.: SD-74737-009		SHEET NO.: 3 OF 4		
	DRAFT WHERE APPLICABLE MUST REMAIN WITHIN DIMENSIONS		THIS DRAWING CONTAINS INFORMATION THAT IS PROPRIETARY TO MOLEX INCORPORATED AND SHOULD NOT BE USED WITHOUT WRITTEN PERMISSION					

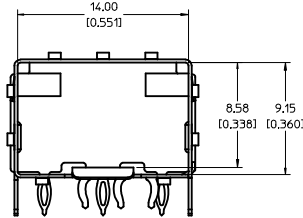
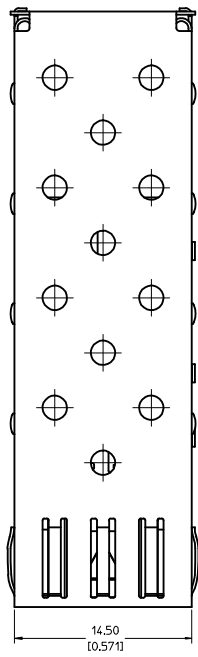
19 18 17 16 15 14 13 12 11 10 9 8 7 6 5 4 3 2 1

DATE	REV	CHANGES
2006/11/30	A	INITIAL RELEASE
2007/01/23	B	[1] CHANGED MODULE EJECT FEATURE TOL FROM +/- 1DEG TO +/-5DEG, [2] CHANGED EJECT ARM ANGLE TOL FROM +/-1DEG TO 50DEG MIN, [3] CHANGED EMI SPRING FINGER OVERLAP FROM 0.21MM TO 0.01MM MIN, [4] ADDED DIM TO LEGS: OVERALL LENGTH, LENGTH FROM TIP TO SLOT, AND SLOT LENGTH., [5] DELETED COMMENTS SECTION FROM REV CHART., [6] ADDED 'REF' TO DIM K2 ON SHEET 2.
2007/04/25	C	[1] ADDED REV SHEET, [2] UPDATED REV NOTES A-B, [3] UPDATD DRAWING TO REFLECT CHG'S MADE TO EM-74737-009-ASSY REV C, [4] ON SHT1 ROTATED BTM_VIEW 180 DEGREES.

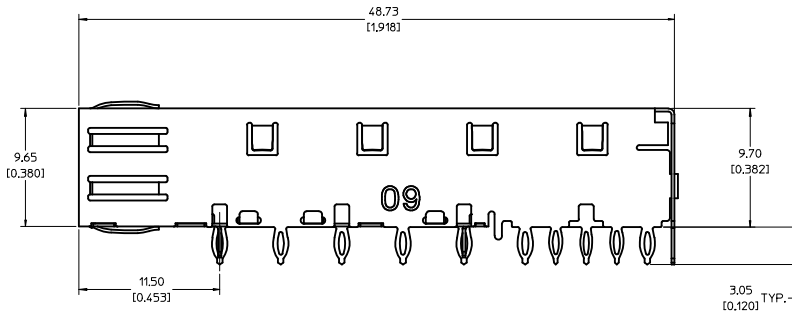
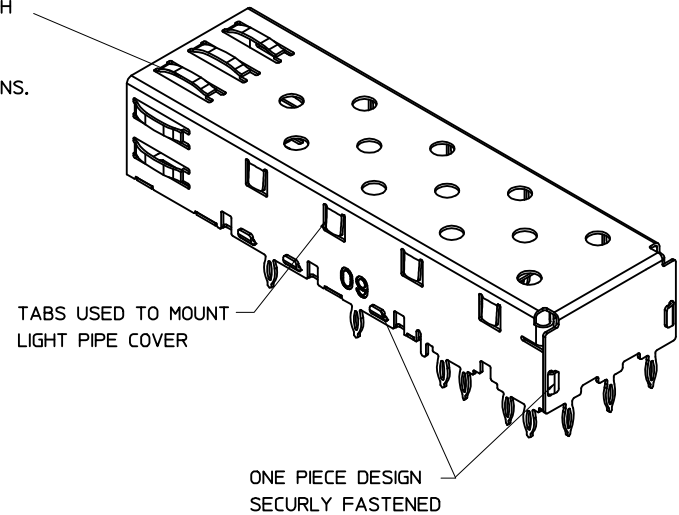
UPDATED 3D MODELS IEC NO: USY2008-015523 DRAWN:CCOX 2007/10/05 CHYK: 2007/10/21 APPR:RMAHMOOD 2007/10/23 REV DESCRIPTION	QUALITY SYMBOLS 		GENERAL TOLERANCES (UNLESS SPECIFIED)		DIMENSION STYLE MM/IN		SCALE 1:1	DESIGN UNITS METRIC	THIRD ANGLE PROJECTION	
	4 PLACES \pm --- \pm --- 3 PLACES \pm --- \pm .005 2 PLACES \pm 0.13 \pm .01 1 PLACE \pm 0.25 \pm ---	mm INCH --- --- --- --- --- ---	DRAWN BY CCOX	DATE 2006/11/22	TITLE SFP ONE PIECE CAGE PRESS-FIT (0.120 LEGS)		MOLEX INCORPORATED			
	DRAFT WHERE APPLICABLE MUST REMAIN WITHIN DIMENSIONS		CHECKED BY RMAHMOOD	DATE 2006/11/22	APPROVED BY (Signature)	DATE (Date)	MATERIAL NO. 747370009	DOCUMENT NO. SD-74737-009	SHEET NO. 4 OF 4	
	SIZE D		THIS DRAWING CONTAINS INFORMATION THAT IS PROPRIETARY TO MOLEX INCORPORATED AND SHOULD NOT BE USED WITHOUT WRITTEN PERMISSION							



BOTTOM VIEW



SPRING FINGER GASKET WITH TWO POINTS OF CONTACT. COMPLIES WITH (SFP) MSA BOARD AND BEZEL LOCATIONS.



NOTES:

1. ALL PART TO BE 100 PERCENT INSPECTED.
2. PRESS FIT LEGS, 0.120 INCHES LONG. 1.57 [0.062] MINIMUM PCB THICKNESS.
3. THIS CAGE IS FOR SINGLE SIDED USE ONLY.
4. CAN BE USED WITH THE FOLLOWING LIGHT PIPE PART NUMBERS:

747260001 - LIGHT PIPE FROM BACK TO TOP
(REFER TO DOCUMENT SD-74726-001)

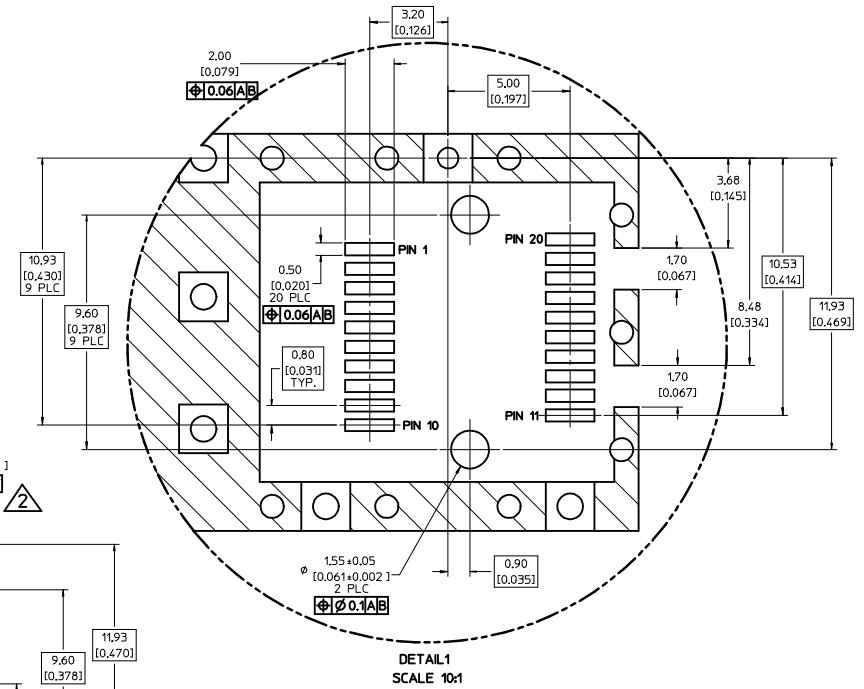
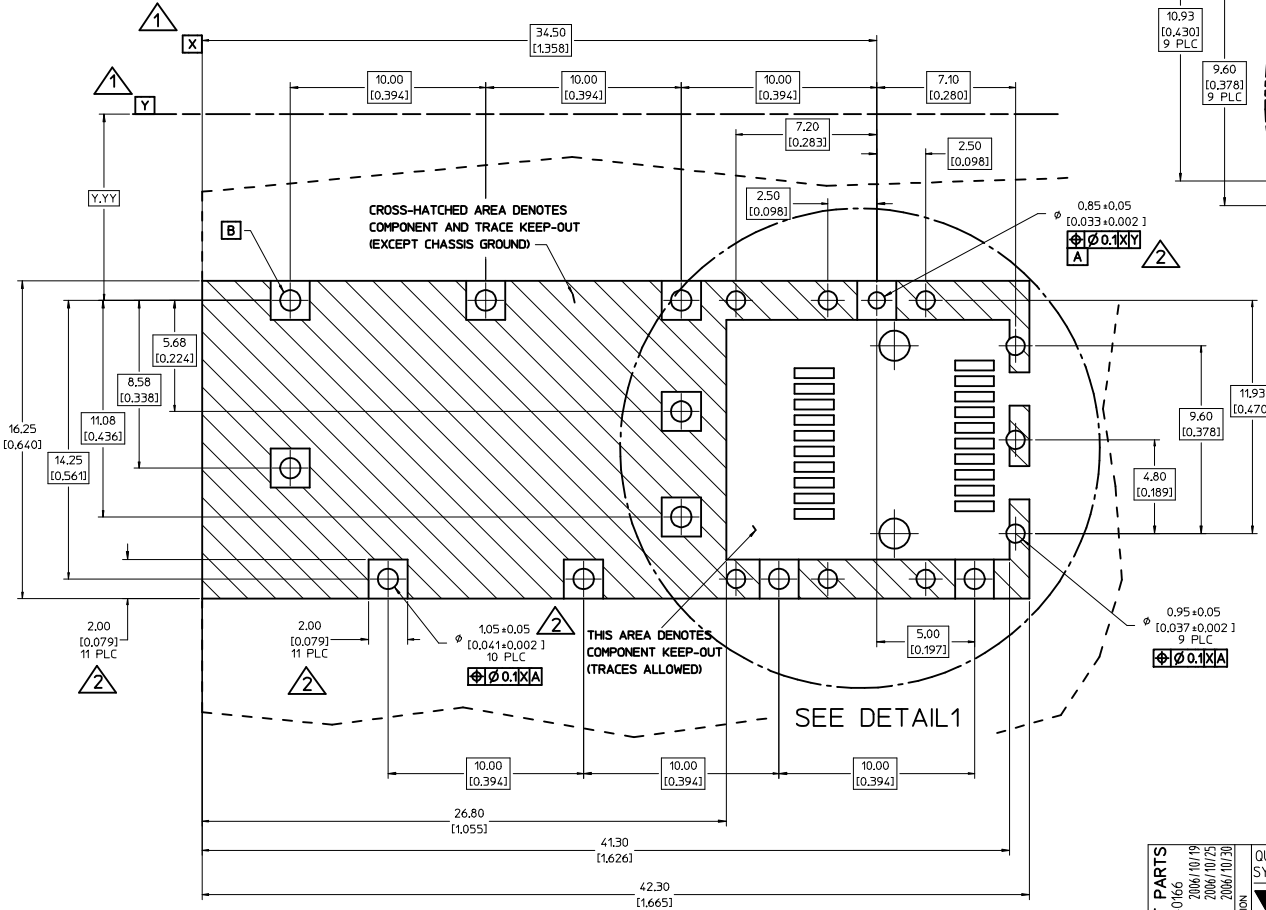
747260002 - LIGHT PIPE FROM SIDE TO TOP
(REFER TO DOCUMENT SD-74726-002)

5. MATERIAL: COPPER ALLOY
PLATING: PRE-PLATED WITH NICKEL

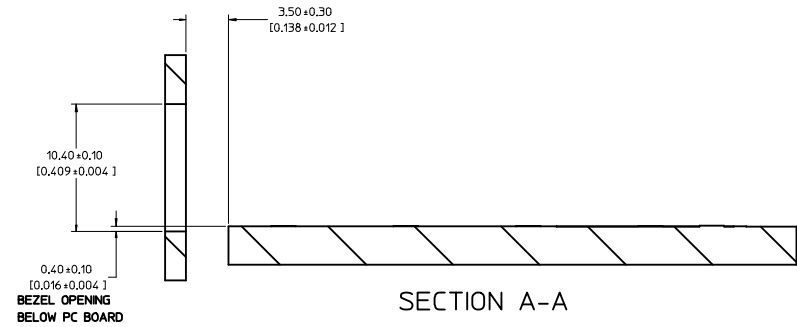
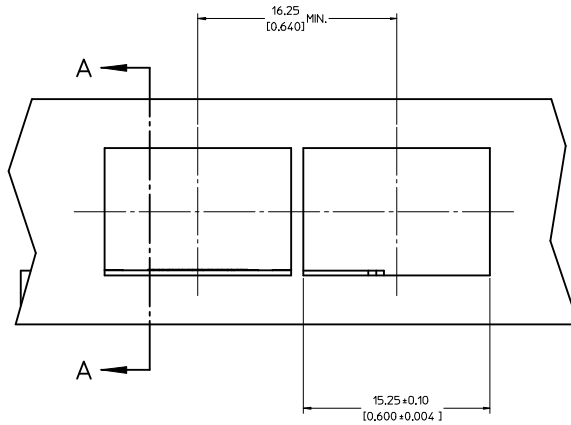
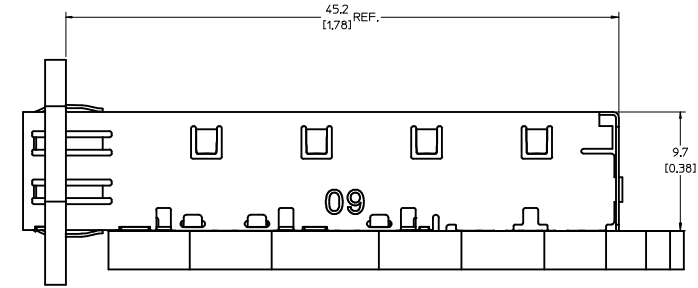
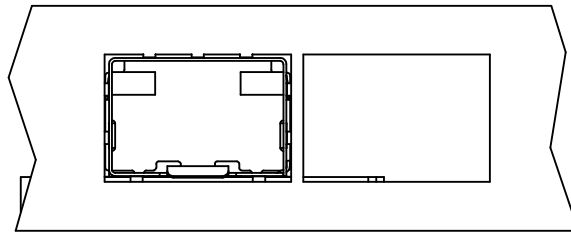
6. THIS PART MEETS THE RESTRICTION OF HAZARDOUS SUBSTANCES IN ELECTRICAL AND ELECTRONIC EQUIPMENT (ROHS) DIRECTIVE (2002/95/EC).

100% INSPECT PARTS EC NO: USY2007-0166 DRAWN BY: CCOX CHKD: CCOX APPR: RMAHMOOD DATE: 2006/10/19 DATE: 2006/10/25 DATE: 2006/10/30	QUALITY SYMBOLS ▽=0 ▽=0	GENERAL TOLERANCES (UNLESS SPECIFIED) <table border="1"> <tr> <th></th> <th>mm</th> <th>INCH</th> </tr> <tr> <td>4 PLACES</td> <td>±.005</td> <td>±.0005</td> </tr> <tr> <td>3 PLACES</td> <td>±.01</td> <td>±.005</td> </tr> <tr> <td>2 PLACES</td> <td>±0.13</td> <td>±.01</td> </tr> <tr> <td>1 PLACE</td> <td>±0.25</td> <td>±.01</td> </tr> </table> ANGULAR ± 1°		mm	INCH	4 PLACES	±.005	±.0005	3 PLACES	±.01	±.005	2 PLACES	±0.13	±.01	1 PLACE	±0.25	±.01	DIMENSION STYLE MM/IN	SCALE 5:1	DESIGN UNITS METRIC	THIRD ANGLE PROJECTION
		mm	INCH																		
	4 PLACES	±.005	±.0005																		
	3 PLACES	±.01	±.005																		
2 PLACES	±0.13	±.01																			
1 PLACE	±0.25	±.01																			
DRAWN BY: CCOX DATE: 2006/10/19	CHECKED BY: RMAHMOOD DATE: 2006/10/19	APPROVED BY:	MATERIAL NO. 747370009	DOCUMENT NO. SD-74737-020	TITLE SFP ONE PIECE CAGE PRESS-FIT (0.120 LEGS) 100% INSPECTION REQUIRED	MOLEX INCORPORATED															
DRAFT WHERE APPLICABLE MUST REMAIN WITHIN DIMENSIONS			SIZE D	THIS DRAWING CONTAINS INFORMATION THAT IS PROPRIETARY TO MOLEX INCORPORATED AND SHOULD NOT BE USED WITHOUT WRITTEN PERMISSION			SHEET NO. 1 OF 3														

- DATUM AND BASIC DIMENSIONS ESTABLISHED BY CUSTOMER.
- PADS AND VIAS ARE CHASSIS GROUND.
- HOLE LAYOUT SHOWN IS FOR SINGLE SIDED MOUNTING ONLY.
- CONNECTOR PAD LAYOUT PER SFP MSA, WILL ACCOMMODATE MOLEX CONNECTOR SERIES 74441 OR EQUIVALENT.



100% INSPECT PARTS IEC NO: USY2007-0166 DRAWN: CCOX 2006/10/19 CHYK: 2006/10/25 APPR: RMAHMOOD 2006/10/20	QUALITY SYMBOLS	GENERAL TOLERANCES (UNLESS SPECIFIED)	DIMENSION STYLE	SCALE	DESIGN UNITS	THIRD ANGLE PROJECTION	
	$\nabla=0$ $\nabla=0$	mm INCH 4 PLACES ± --- ± --- 3 PLACES ± --- ± .005 2 PLACES ± 0.13 ± .01 1 PLACE ± 0.25 ± --- ANGULAR ± 1°	MM/IN	8:1	METRIC		
	DRAFT WHERE APPLICABLE MUST REMAIN WITHIN DIMENSIONS	MATERIAL NO.	DRAWN BY	DATE	CHECKED BY	DATE	TITLE
	SIZE D	747370009	CCOX	2006/10/19	RMAHMOOD	2006/10/19	SFP ONE PIECE CAGE PRESS-FIT (0.120 LEGS) 100% INSPECTION REQUIRED
				APPROVED BY	DATE	MOLEX INCORPORATED	
						DOCUMENT NO. SD-74737-020 SHEET NO. 2 OF 3	



100% INSPECT PARTS IEC NO: USY2007-0166 DRAWN: CCOX 2006/10/19 CHYK: 2006/10/25 APPROV: MAHMOOD 2006/10/30	QUALITY SYMBOLS ▽=0 ▽=0	GENERAL TOLERANCES (UNLESS SPECIFIED) <table border="1"> <thead> <tr> <th></th> <th>mm</th> <th>INCH</th> </tr> </thead> <tbody> <tr> <td>4 PLACES</td> <td>±---</td> <td>±---</td> </tr> <tr> <td>3 PLACES</td> <td>±---</td> <td>±.005</td> </tr> <tr> <td>2 PLACES</td> <td>±0.13</td> <td>±.01</td> </tr> <tr> <td>1 PLACE</td> <td>±0.25</td> <td>±---</td> </tr> </tbody> </table>		mm	INCH	4 PLACES	±---	±---	3 PLACES	±---	±.005	2 PLACES	±0.13	±.01	1 PLACE	±0.25	±---	DIMENSION STYLE MM/IN	SCALE 5:1	DESIGN UNITS METRIC	THIRD ANGLE PROJECTION
		mm	INCH																		
	4 PLACES	±---	±---																		
	3 PLACES	±---	±.005																		
2 PLACES	±0.13	±.01																			
1 PLACE	±0.25	±---																			
MATERIAL NO. 747370009	DOCUMENT NO. SD-74737-020	TITLE SFP ONE PIECE CAGE PRESS-FIT (0.120 LEGS) 100% INSPECTION REQUIRED	MOLEX INCORPORATED																		
SIZE D	THIS DRAWING CONTAINS INFORMATION THAT IS PROPRIETARY TO MOLEX INCORPORATED AND SHOULD NOT BE USED WITHOUT WRITTEN PERMISSION					SHEET NO. 3 OF 3															
DRAFT WHERE APPLICABLE MUST REMAIN WITHIN DIMENSIONS																					