







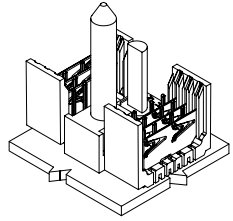
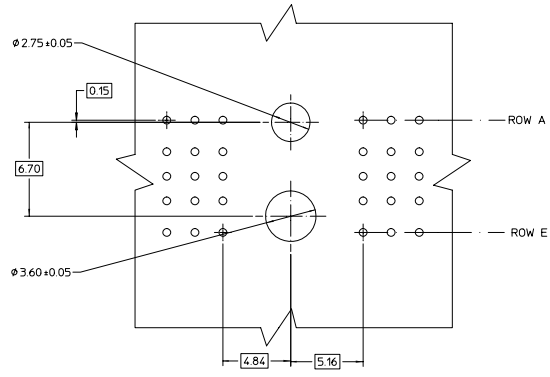
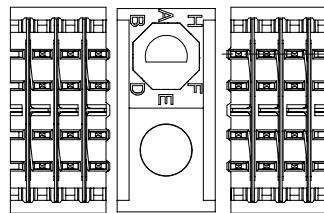


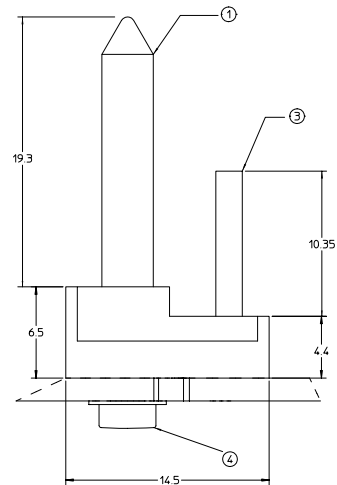
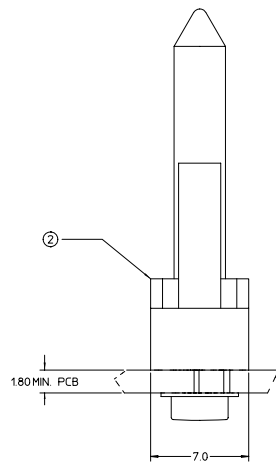
20 19 18 17 16 15 14 13 12 11 10 9 8 7 6 5 4 3 2 1

| MATERIAL NUMBER PCB THICKNESS >4.0 - 9.0 | MATERIAL NUMBER PCB THICKNESS 18 - 4.0 | BUSHING CLOCK POSITION |
|--|--|---|
| 74952-5901 | 74952-5001 | A  |
| 74952-5902 | 74952-5002 | B  |
| 74952-5903 | 74952-5003 | C  |
| 74952-5904 | 74952-5004 | D  |
| 74952-5905 | 74952-5005 | E  |
| 74952-5906 | 74952-5006 | F  |
| 74952-5907 | 74952-5007 | G  |
| 74952-5908 | 74952-5008 | H  |



BILL OF MATERIAL FOR 74952-50**

| ITEM | DESCRIPTION | QTY. |
|------|------------------------------|------|
| 1 | GUIDE PIN | 1 |
| 2 | GUIDANCE & POLARIZING MODULE | 1 |
| 3 | KEYING PIN | 1 |
| 4 | SCREW & WASHER (PCB 18-4.0) | 1 |



BILL OF MATERIAL FOR 74952-59**

| ITEM | DESCRIPTION | QTY. |
|------|-------------------------------|------|
| 1 | GUIDE PIN | 1 |
| 2 | GUIDANCE & POLARIZING MODULE | 1 |
| 3 | KEYING PIN | 1 |
| 4 | SCREW & WASHER (PCB >4.0-9.0) | 1 |

NOTES:

- MATERIAL:
HOUSING: LIQUID CRYSTAL POLYMER (LCP),
COLOR: BLACK
GUIDE PIN / KEYING PIN: STAINLESS STEEL
- THIS PART CONFORMS TO MOLEX PRODUCT SPECIFICATION PS-74031-999.
- PACKAGING: STANDARD BULK PACK, 100 PER BAG PACKAGE SCREW SEPARATELY.

| | | | | | | | | |
|---|-------------------------------|---|-------------------------------------|-----------------------------------|--|------------------------|--------------------|--|
| EC NO. UDT2002-0216 DRWN: LMSLEY 2001/12/19 CHKD: SREED 2001/12/19 APPR: CBXLER 2001/12/20 | QUALITY SYMBOLS ▽-0 ▽-0 | GENERAL TOLERANCES (UNLESS SPECIFIED) | | SCALE 6:1 | DESIGN UNITS METRIC | THIRD ANGLE PROJECTION | REVISE ON CAD ONLY | |
| | | 4 PLACES ± --- ± --- 3 PLACES ± --- ± --- 2 PLACES ± --- ± --- 1 PLACE ± --- ± --- | DIMENSION STYLE MM ONLY | DRAWN BY NMARTIN DATE 01/12/11 | TITLE BACKPLANE GUIDANCE AND POLARIZING MODULE 5 ROW HSD SALES DRAWING | | | |
| | | ANGULAR ± 2 ° | CHECKED BY SREED DATE 01/12/11 | MOLEX MOLEX INCORPORATED | | | | |
| | | DRAFT WHERE APPLICABLE MUST REMAIN WITHIN DIMENSIONS | APPROVED BY CBXLER DATE 01/12/11 | MATERIAL NO. SEE CHART | DOCUMENT NO. SD-74952-002 | SHEET NO. 1 OF 1 | D | |