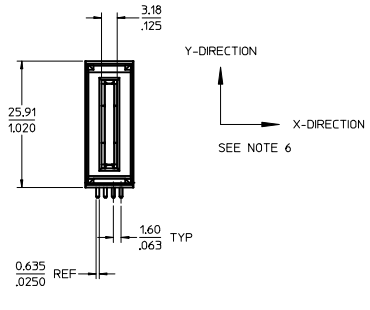
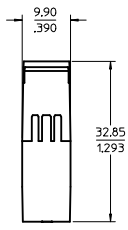
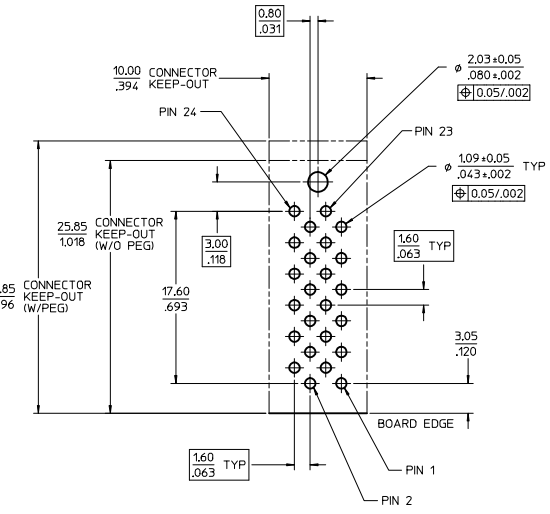
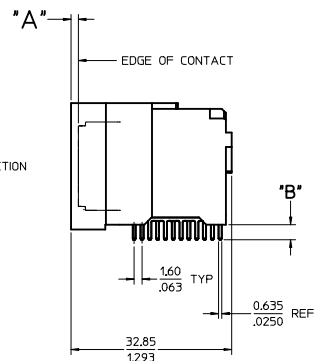


PART NUMBER	DIM 'A'	DIM 'B'	BLADE TYPE	PCB THICKNESS	PLATING	PEGS
75556-5000	0.00/.000	3.06/.120	LONG	2.39/.094	30μ INCH MIN SELECT HARD GOLD IN CONTACT AREA WITH 100μ INCH MIN SELECT TIN IN TAIL AREA OVER 50μ INCH MIN NICKEL OVERALL.	W/O PEGS
75556-5001	0.00/.000	3.81/.150	LONG	3.18/.125		
75556-5100	1.50/.059	3.06/.120	SHORT	2.39/.094		
75556-5101	1.50/.059	3.81/.150	SHORT	3.18/.125		
75556-1500	0.00/.000	3.06/.120	LONG	2.39/.094	30μ INCH MIN SELECT HARD GOLD IN CONTACT AREA WITH 100μ INCH MIN SELECT TIN IN TAIL AREA OVER 50μ INCH MIN NICKEL OVERALL.	W/PEGS
75556-1501	0.00/.000	3.81/.150	LONG	3.18/.125		
75556-1510	1.50/.059	3.06/.120	SHORT	2.39/.094		
75556-1511	1.50/.059	3.81/.150	SHORT	3.18/.125		

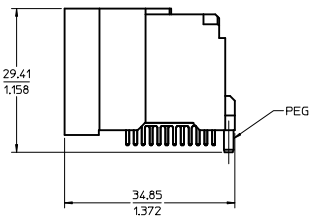


75556-5*** SHOWN (W/O PEG)



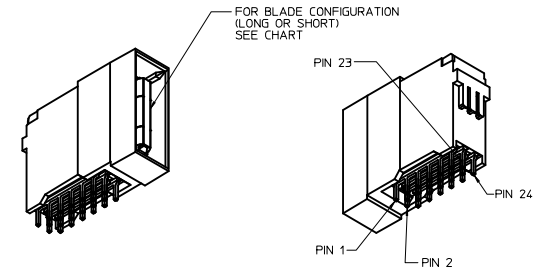
PCB LAYOUT SCALE: 4:1

RECOMMENDED MIN PCB THICKNESS : SEE TABLE

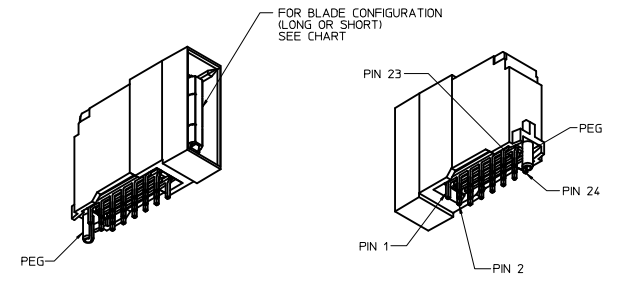


75556-15** SHOWN (W/PEG)

- NOTES:
- MATERIALS:
- HOUSING: 30% GLASS FILLED, LCP 94V-0, COLOR BLACK
- TERMINALS: COPPER ALLOY
- PLATING: PER ES-88 - SEE CHART
 - SEE CHART FOR REFERENCE DOCUMENTS
 - PLUG MATES WITH RECEPTACLE ASSEMBLIES: 75542-5000 & 75542-5001
 - MODULE IS DESIGNED FOR SOLDERING TO THE PCB
 - MODULE ASSEMBLY IS RoHS COMPLIANT
 - GATHERABILITY: ±0.65/.026 X-DIRECTION
±1.30/.051 Y-DIRECTION



75556-5100 SHOWN (W/O PEG)

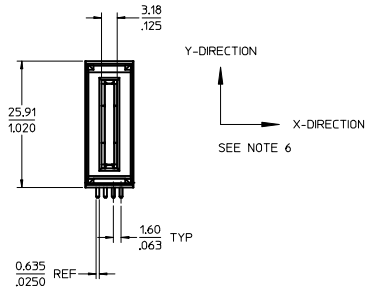
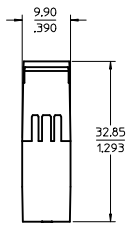


75556-1500 SHOWN (W/PEG)

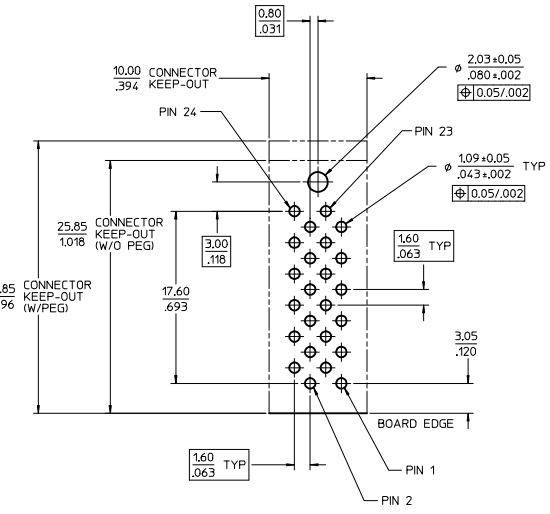
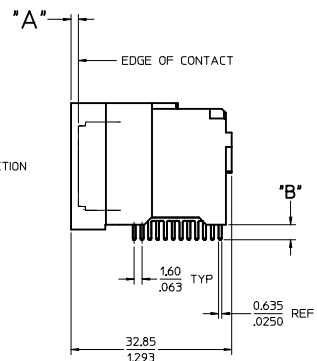
REFERENCE DOCUMENTS	
PS-75431-999	PRODUCT SPECIFICATION: PERFORMANCE AND RATINGS
SD-75555-***	FINAL ASSEMBLY CONFIGURATION DRAWING

REV	DESCRIPTION	QUALITY SYMBOLS		GENERAL TOLERANCES (UNLESS SPECIFIED)		DIMENSION STYLE		SCALE	DESIGN UNITS	THIRD ANGLE PROJECTION
		mm	INCH	mm	INCH	MM/IN	DATE	TITLE		
1	REVISED CHART	4 PLACES	±---	±---	±---	DRAWN BY	DATE	2:1	METRIC	
2	2016/10/10	3 PLACES	±---	±.008	±---	ADRNATNOL	2005/04/19			
3	2016/11/14	2 PLACES	±0.20	±.013	±---	CHECKED BY	DATE			
4	2016/11/15	1 PLACE	±0.33	±---	ANGULAR ±1/2°	APATEL	2005/04/19	EXTREME POWERMASS 150 AMP MODULE, PLUG		
MATERIAL NO.		DRAWN BY		DATE		APPROVED BY				MOLEX INCORPORATED
SIZE		DRAWING NO.		DATE		DOCUMENT NO.		SD-75556-100		
DRAFT WHERE APPLICABLE MUST REMAIN WITHIN DIMENSIONS		SEE CHART		THIS DRAWING CONTAINS INFORMATION THAT IS PROPRIETARY TO MOLEX INCORPORATED AND SHOULD NOT BE USED WITHOUT WRITTEN PERMISSION		SHEET NO.		1 OF 1		

PART NUMBER	DIM 'A'	DIM 'B'	BLADE TYPE	PCB THICKNESS	PLATING	PEGS
75556-5000	0.00/.000	3.06/.120	LONG	2.39/.094	30μ INCH MIN SELECT HARD GOLD IN CONTACT AREA WITH 100μ INCH MIN SELECT TIN IN TAIL AREA OVER 50μ INCH MIN NICKEL OVERALL.	W/O PEGS
75556-5001	0.00/.000	3.81/.150	LONG	3.18/.125		
75556-5100	1.50/.059	3.06/.120	SHORT	2.39/.094		
75556-5101	1.50/.059	3.81/.150	SHORT	3.18/.125		
75556-1500	0.00/.000	3.06/.120	LONG	2.39/.094	30μ INCH MIN SELECT HARD GOLD IN CONTACT AREA WITH 100μ INCH MIN SELECT TIN IN TAIL AREA OVER 50μ INCH MIN NICKEL OVERALL.	W/PEGS
75556-1501	0.00/.000	3.81/.150	LONG	3.18/.125		
75556-1510	1.50/.059	3.06/.120	SHORT	2.39/.094		
75556-1511	1.50/.059	3.81/.150	SHORT	3.18/.125		

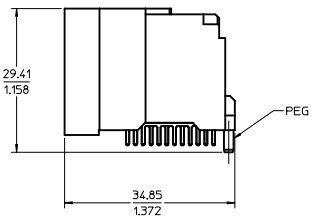


75556-5*** SHOWN (W/O PEG)



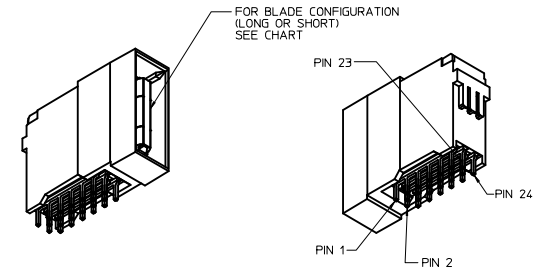
PCB LAYOUT SCALE: 4:1

RECOMMENDED MIN PCB THICKNESS : SEE TABLE

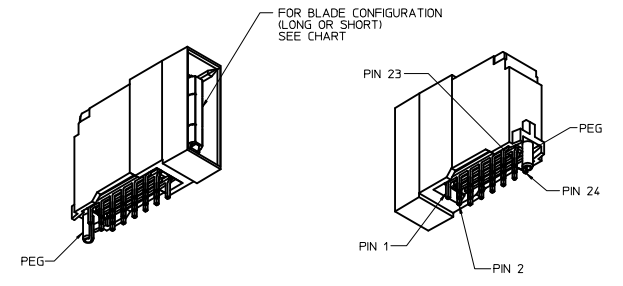


75556-15** SHOWN (W/PEG)

- NOTES:
- MATERIALS:
- HOUSING: 30% GLASS FILLED, LCP 94V-0, COLOR BLACK
- TERMINALS: COPPER ALLOY
- PLATING: PER ES-88 - SEE CHART
 - SEE CHART FOR REFERENCE DOCUMENTS
 - PLUG MATES WITH RECEPTACLE ASSEMBLIES: 75542-5000 & 75542-5001
 - MODULE IS DESIGNED FOR SOLDERING TO THE PCB
 - MODULE ASSEMBLY IS RoHS COMPLIANT
 - GATHERABILITY: ±0.65/.026 X-DIRECTION
±1.30/.051 Y-DIRECTION



75556-5100 SHOWN (W/O PEG)



75556-1500 SHOWN (W/PEG)

REFERENCE DOCUMENTS	
PS-75431-999	PRODUCT SPECIFICATION: PERFORMANCE AND RATINGS
SD-75555-***	FINAL ASSEMBLY CONFIGURATION DRAWING

REV	DESCRIPTION	QUALITY SYMBOLS		GENERAL TOLERANCES (UNLESS SPECIFIED)		DIMENSION STYLE		SCALE	DESIGN UNITS	THIRD ANGLE PROJECTION
		mm	INCH	mm	INCH	MM/IN	METRIC	2:1	METRIC	☉
1	REVISION CHART	4 PLACES	±---	±---	±---	DRAWN BY	DATE	TITLE	EXTREME POWERMASS 150 AMP MODULE, PLUG	
2	2016/10/10	3 PLACES	±---	±.008	±---	ADRNATNOL	2005/04/19		MOLEX INCORPORATED	
3	2016/11/14	2 PLACES	±0.20	±.013	±---	CHECKED BY	DATE		SD-75556-100	
4	2016/11/15	1 PLACE	±0.33	±---	±---	APPROVED BY	DATE		1 OF 1	
		ANGULAR ±1/2°		DRAFT WHERE APPLICABLE MUST REMAIN WITHIN DIMENSIONS		MATERIAL NO. SEE CHART		DOCUMENT NO.		

THIS DRAWING CONTAINS INFORMATION THAT IS PROPRIETARY TO MOLEX INCORPORATED AND SHOULD NOT BE USED WITHOUT WRITTEN PERMISSION