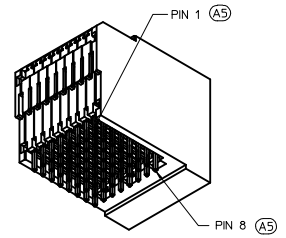
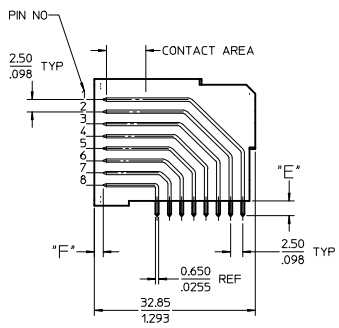
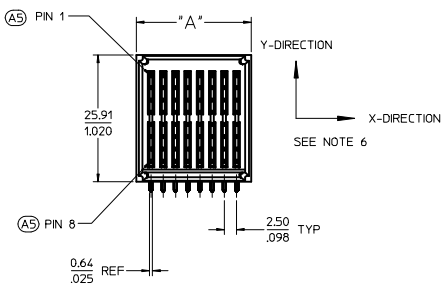
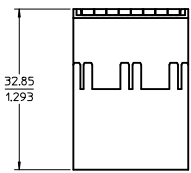
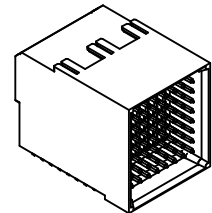
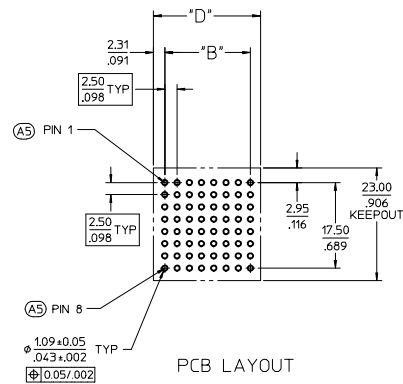


PART NUMBER	CIRCUIT SIZE	DIM 'A'	DIM 'B'	DIM 'D'	DIM 'E' TAIL	DIM 'F' PIN	MATING MODULE	PLATING
75568-5000	64	23.50/.925	17.50/.689	27.50/1.08	3.07±0.10/ .12±0.004	2.51/.099	75548-2000	30± INCH MIN SELECT HARD GOLD IN CONTACT AREA WITH 100± INCH MIN SELECT TIN IN TAIL AREA OVER 50± INCH MIN NICKEL OVERALL
75568-5056	56	21.00/.827	15.00/.591	25.00/.984			75548-2056	
75568-5048	48	18.50/.728	12.50/.492	22.50/.885			75548-2048	
75568-5040	40	16.00/.630	10.00/.394	20.00/.787			75548-2040	
75568-5032	32	13.50/.531	7.50/.295	17.50/.689			75548-2032	
75568-5024	24	11.00/.433	5.00/.197	15.00/.590	75548-2024			
75568-5100	64	23.50/.925	17.50/.689	27.50/1.08	3.07±0.10/ .12±0.004	2.80/.110 PIN 8	75548-2000	
75568-5156	56	21.00/.827	15.00/.591	25.00/.984			75548-2056	
75568-5148	48	18.50/.728	12.50/.492	22.50/.885			75548-2048	
75568-5140	40	16.00/.630	10.00/.394	20.00/.787			75548-2040	
75568-5132	32	13.50/.531	7.50/.295	17.50/.689			75548-2032	
75568-5124	24	11.00/.433	5.00/.197	15.00/.590	75548-2024			
75568-5200	64	23.50/.925	17.50/.689	27.50/1.08	3.84±0.10/ .15±0.004	2.51/.099	75548-2000	
75568-5256	56	21.00/.827	15.00/.591	25.00/.984			75548-2056	
75568-5248	48	18.50/.728	12.50/.492	22.50/.885			75548-2048	
75568-5240	40	16.00/.630	10.00/.394	20.00/.787			75548-2040	
75568-5232	32	13.50/.531	7.50/.295	17.50/.689			75548-2032	
75568-5224	24	11.00/.433	5.00/.197	15.00/.590	75548-2024			

- NOTES:
- MATERIALS:  
- HOUSING: 30% GLASS FILLED LCP 94V-0, COLOR: BLACK  
- TERMINALS: COPPER ALLOY  
PLATING: PER ES-88 - SEE CHART  
LUBRICATION: EB1 IN CONTACT AREA
  - SEE CHART FOR REFERENCE DOCUMENTS
  - MODULE IS DESIGNED FOR SOLDERING TO THE PCB
  - MODULE ASSEMBLY IS RoHS COMPLIANT
  - PLUG MATES WITH RECEPTACLE ASSEMBLIES: 75548-6\*\*\*
  - GATHERABILITY: +0.65/.026 X-DIRECTION  
+1.30/.051 Y-DIRECTION



75568-1000  
64 CIRCUIT  
(SHOWN FOR REFERENCE ONLY)

REFERENCE DOCUMENTS	
PS-75431-999	PRODUCT SPECIFICATION: PERFORMANCE AND RATINGS
SD-75555-***	MODULE CONFIGURATION DRAWING

REV	DESCRIPTION	QUALITY SYMBOLS		GENERAL TOLERANCES (UNLESS SPECIFIED)		DIMENSION STYLE		SCALE	DESIGN UNITS	THIRD ANGLE PROJECTION												
		mm	INCH	mm	INCH	MM/IN	2:1	METRIC	☉													
AS	REV PIN CALL-OUTS LEC NO: LCP2010-0271 DRAWN: JUILLES CHKD: 2009/08/05 APPR: APATEL DATE: 2009/08/05	4 PLACES	±---	±---	±---	3 PLACES	±---	±.008	2 PLACES	±0.20	±.013	1 PLACE	±0.33	±---	ANGULAR ±1/2°	DRAFT WHERE APPLICABLE MUST REMAIN WITHIN DIMENSIONS	DRAWN BY ADRATNOL DATE 2005/04/11	CHECKED BY MDATA DATE 2005/04/11	APPROVED BY APATEL DATE 2005/04/11	MATERIAL NO. <b>SEE CHART</b>	DOCUMENT NO. <b>SD-75568-100</b>	SHEET NO. 1 OF 1