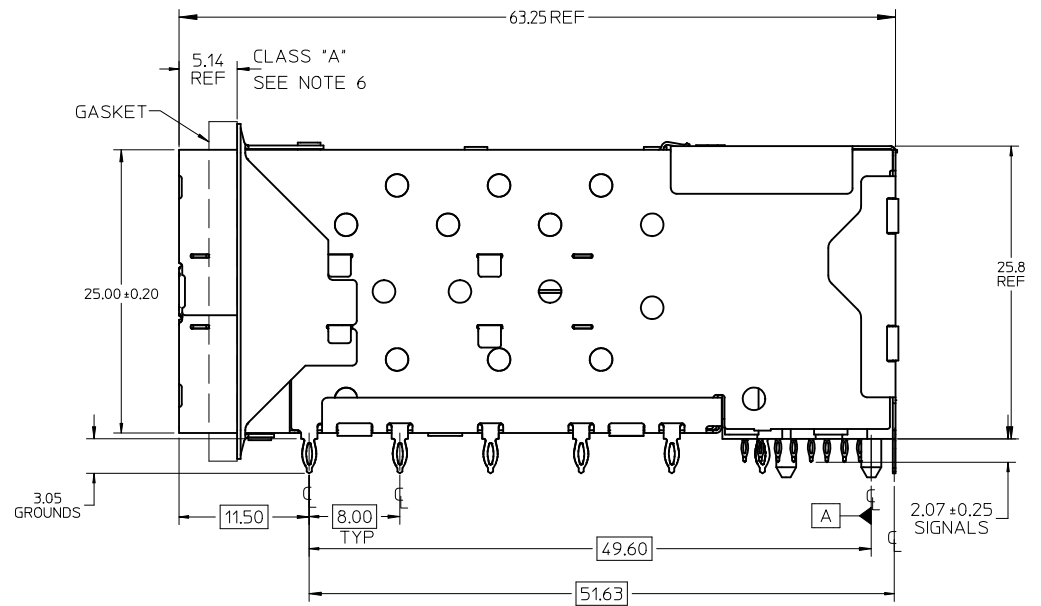


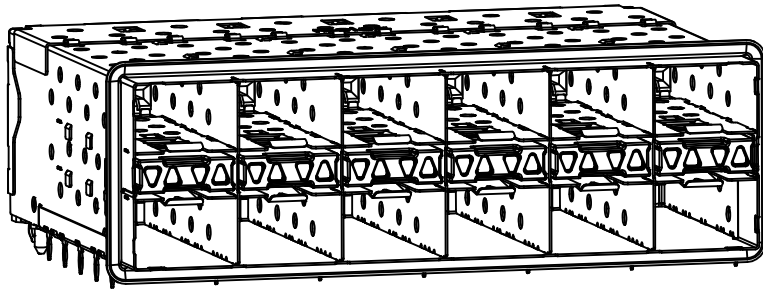
| PART NUMBER | DESCRIPTION | VIEW | COMPLIANT TAIL PLATING |
|-------------|---------------|----------|------------------------|
| 760940001 | 4 LIGHT PORTS | SEE PG 2 | MATTE TIN / LEAD |
| 760940002 | INNER 2 PORTS | SEE PG 2 | MATTE TIN / LEAD |
| 760940003 | OUTER 2 PORTS | SEE PG 2 | MATTE TIN / LEAD |
| 760945001 | 4 LIGHT PORTS | SEE PG 2 | MATTE TIN |
| 760945002 | INNER 2 PORTS | SEE PG 2 | MATTE TIN |
| 760945003 | OUTER 2 PORTS | SEE PG 2 | MATTE TIN |

NOTES

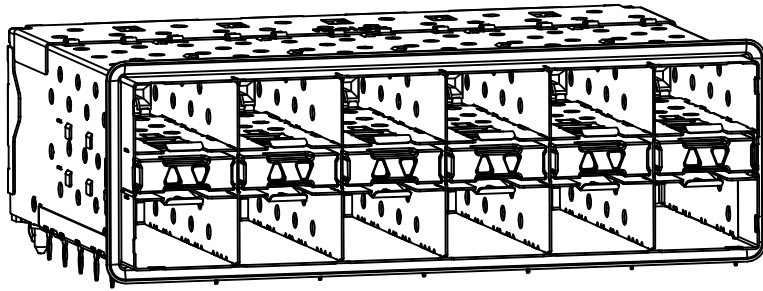
- MATERIAL:
 - CAGE: NICKEL SILVER, THICKNESS: 0.25mm
 - CONNECTOR HOUSING: GLASS FILLED LIQUID CRYSTAL POLYMER (LCP), UL 94V-0, COLOR: BLACK
 - OVERMOLD TERMINAL HOUSING: GLASS FILLED LIQUID CRYSTAL POLYMER (LCP), UL 94V-0, COLOR: BLACK
 - TERMINALS: TIN BRASS
 - EMI GASKET: CONDUCTIVE ELASTOMER
 - LIGHTPIPE HOUSING: ZINC
 - LIGHTPIPES: POLYCARBONATE, COLOR: CLEAR
- FINISHES:
 - TERMINALS: CONTACT AREA: 0.76 MICROMETERS MINIMUM HARD GOLD OVER 1.27 MICROMETERS MINIMUM NICKEL.
 - COMPLIANT TAIL - MATTE TIN/LEAD OPTION: 0.76 TO 1.52 MICROMETERS 90/10 MATTE TIN-LEAD OVER 0.76 MICROMETERS MINIMUM NICKEL.
 - COMPLIANT TAIL - MATTE TIN OPTION: 0.76 TO 1.52 MICROMETERS MATTE TIN OVER 0.76 MICROMETERS MINIMUM NICKEL.
 - LIGHT PIPE HOUSING: 80 MICROMETERS MINIMUM NICKEL OVER COPPER
- REFER TO PS-75310-001 PRODUCT SPEC FOR ALL ELECTRICAL, MECHANICAL AND ENVIRONMENTAL SPECIFICATIONS.
- LIGHT PIPE PAD LAYOUT IS FOR 0805 LOW-PROFILE LED PACKAGE FOR OTHER RECOMMENDED LAYOUTS REFER TO MOLEX'S REPORT TS-75310-001.
- REFER TO PK-75451-001 FOR ALL PACKAGING SPECIFICATIONS.
- ALL EXTERIOR SURFACES TO BE CLASS 'B' SURFACES EXCEPT THE UNDER SIDE OF THE CAGE WHERE THE PCB WOULD BE LOCATED AND AS NOTED. THE SURFACES TO CONFORM TO THE MOLEX COSMETIC DOC PS-45499-002.
- REFER TO AS-76090-001 FOR HIGH SPEED ROUTING RECOMMENDATIONS.
- DATE CODE LOCATION IS SHOWN ABOVE.
 - DATE CODE FORMAT: DDDY MX A1
 - DDD = DAY OF THE YEAR
 - Y = YEAR
 - MX = MOLEX
 - A = ALPHA CHARACTER - INDICATES MANUFACTURING LINE
 - 1 = NUMERIC CHARACTER - INDICATES PRODUCTION SHIFT



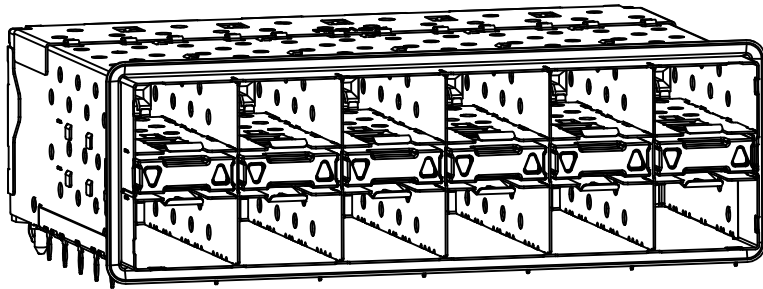
| REV | DESCRIPTION | QUALITY SYMBOLS | GENERAL TOLERANCES (UNLESS SPECIFIED) | | DIMENSION STYLE | | SCALE | DESIGN UNITS | THIRD ANGLE PROJECTION |
|-----|--|-------------------|--|-------|------------------------|------------|---|--------------|--|
| | | | mm | INCH | MM ONLY | DATE | | | |
| D | ADD NOTE 7 & 8 EC NO: UCP2011-2594 DRWN:WOLFE 2011/03/08 CHKD:BBARKER 2011/03/08 APPR:SMILLER 2011/09/20 | ▽=0 ▽=0 ▽=0 | 4 PLACES ± --- | ± --- | DRAWN BY | DATE | 3:1 | METRIC | MOLEX INCORPORATED SD-76094-001 SHEET NO. 1 OF 4 |
| | | | 3 PLACES ± --- | ± --- | CHECKED BY | DATE | | | |
| | | | 2 PLACES ± 0.13 | ± --- | APPROVED BY | DATE | | | |
| | | | 1 PLACE ± 0.25 | ± --- | RNELSON | 01-18-2007 | | | |
| | | | ANGULAR ± 5 ° | | MATERIAL NO. SEE TABLE | | | | |
| | | | DRAFT WHERE APPLICABLE MUST REMAIN WITHIN DIMENSIONS | | SIZE C | | THIS DRAWING CONTAINS INFORMATION THAT IS PROPRIETARY TO MOLEX INCORPORATED AND SHOULD NOT BE USED WITHOUT WRITTEN PERMISSION | | |



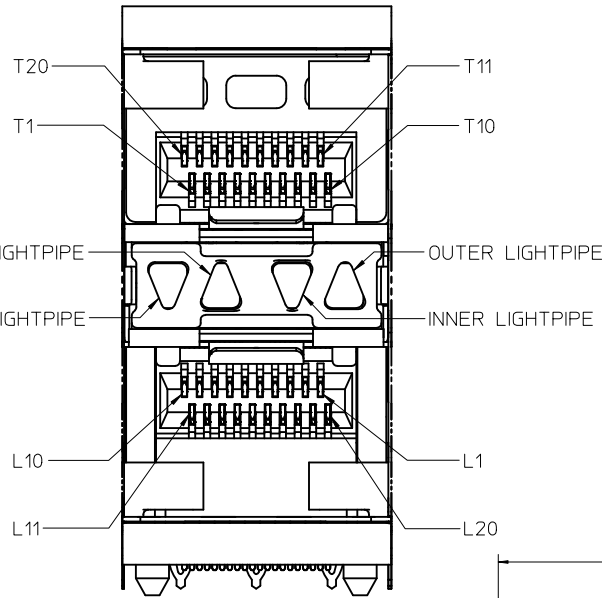
760940001 AND 760945001
WITH INNER AND OUTER LIGHTPIPES



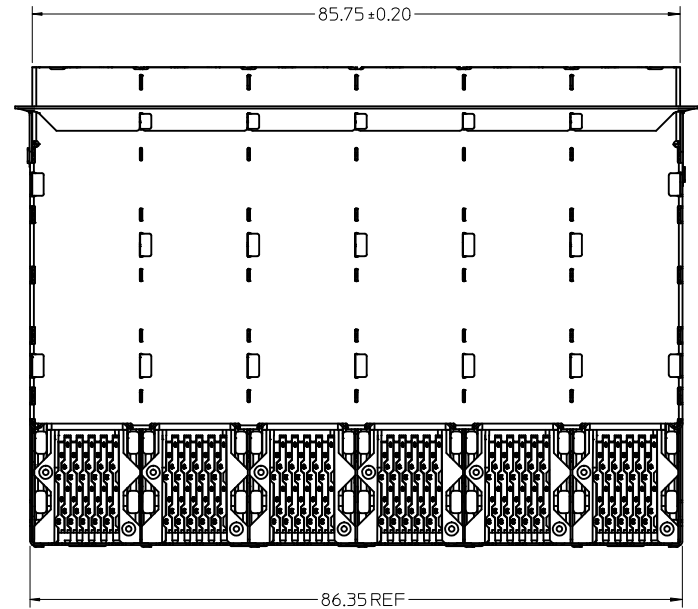
760940002 AND 760945002
WITH INNER LIGHTPIPES



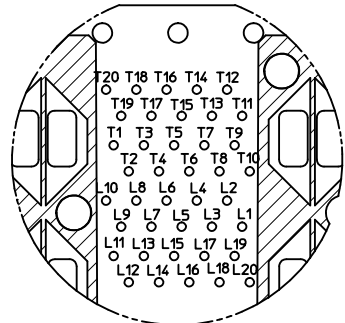
760940003 AND 760945003
WITH OUTER LIGHTPIPES



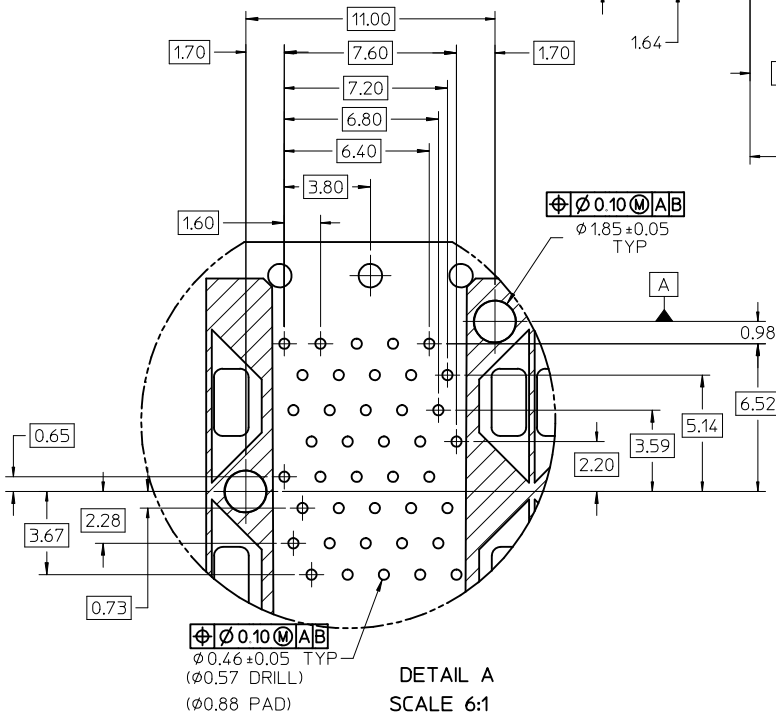
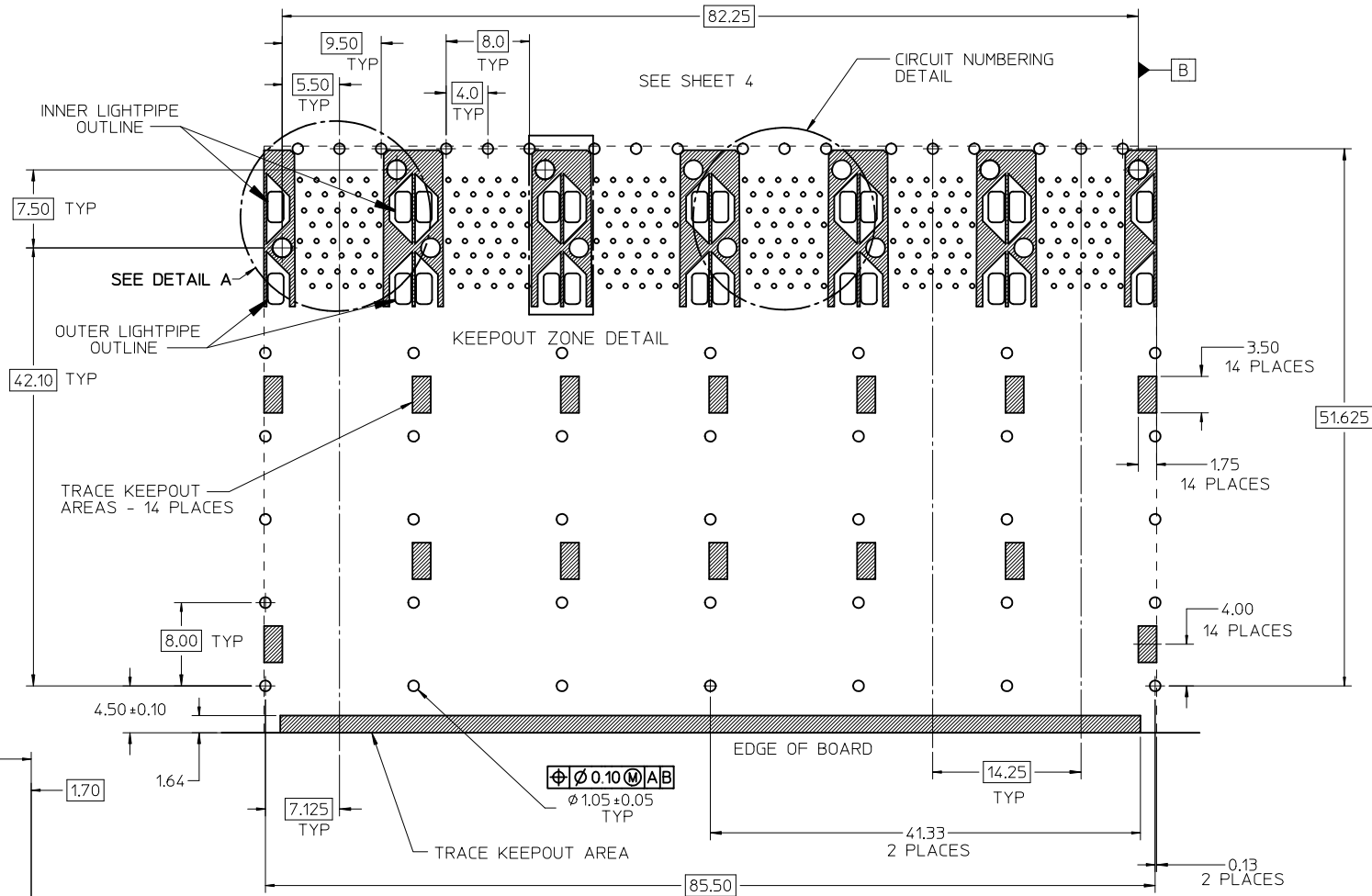
DETAIL B
SCALE 5:1
CIRCUIT NUMBERING
AND LIGHTPIPE
IDENTIFICATION



| ADD DETAIL B EC NO: UCP2011-2594 DRWN:MWOLFE 2011/03/08 CHKD:BBARKER 2011/03/08 APPR:SMILLER 2011/09/20 | QUALITY SYMBOLS | GENERAL TOLERANCES (UNLESS SPECIFIED) <table border="1"> <thead> <tr> <th></th> <th>mm</th> <th>INCH</th> </tr> </thead> <tbody> <tr> <td>4 PLACES</td> <td>± 0.25</td> <td>± 0.010</td> </tr> <tr> <td>3 PLACES</td> <td>± 0.20</td> <td>± 0.008</td> </tr> <tr> <td>2 PLACES</td> <td>± 0.13</td> <td>± 0.005</td> </tr> <tr> <td>1 PLACE</td> <td>± 0.25</td> <td>± 0.010</td> </tr> </tbody> </table> | | mm | INCH | 4 PLACES | ± 0.25 | ± 0.010 | 3 PLACES | ± 0.20 | ± 0.008 | 2 PLACES | ± 0.13 | ± 0.005 | 1 PLACE | ± 0.25 | ± 0.010 | DIMENSION STYLE MM ONLY DRAWN BY DATE JLONG 01-18-2007 CHECKED BY DATE MSANDBERG 01-18-2007 APPROVED BY DATE RNELSON 01-18-2007 | SCALE 2:1 DESIGN UNITS METRIC | THIRD ANGLE PROJECTION |
|--|-------------------------------------|--|---------|----|------|----------|--------|---------|----------|--------|---------|----------|--------|---------|---------|--------|---------|---|--|----------------------------|
| | | mm | INCH | | | | | | | | | | | | | | | | | |
| | 4 PLACES | ± 0.25 | ± 0.010 | | | | | | | | | | | | | | | | | |
| | 3 PLACES | ± 0.20 | ± 0.008 | | | | | | | | | | | | | | | | | |
| 2 PLACES | ± 0.13 | ± 0.005 | | | | | | | | | | | | | | | | | | |
| 1 PLACE | ± 0.25 | ± 0.010 | | | | | | | | | | | | | | | | | | |
| MATERIAL NO. SEE TABLE | DOCUMENT NO. SD-76094-001 | SHEET NO. 2 OF 4 | | | | | | | | | | | | | | | | | | |
| DRAFT WHERE APPLICABLE MUST REMAIN WITHIN DIMENSIONS | SIZE C | THIS DRAWING CONTAINS INFORMATION THAT IS PROPRIETARY TO MOLEX INCORPORATED AND SHOULD NOT BE USED WITHOUT WRITTEN PERMISSION | | | | | | | | | | | | | | | | | | |



CIRCUIT NUMBERING
COMPONENT SIDE OF BOARD
SCALE 5:1



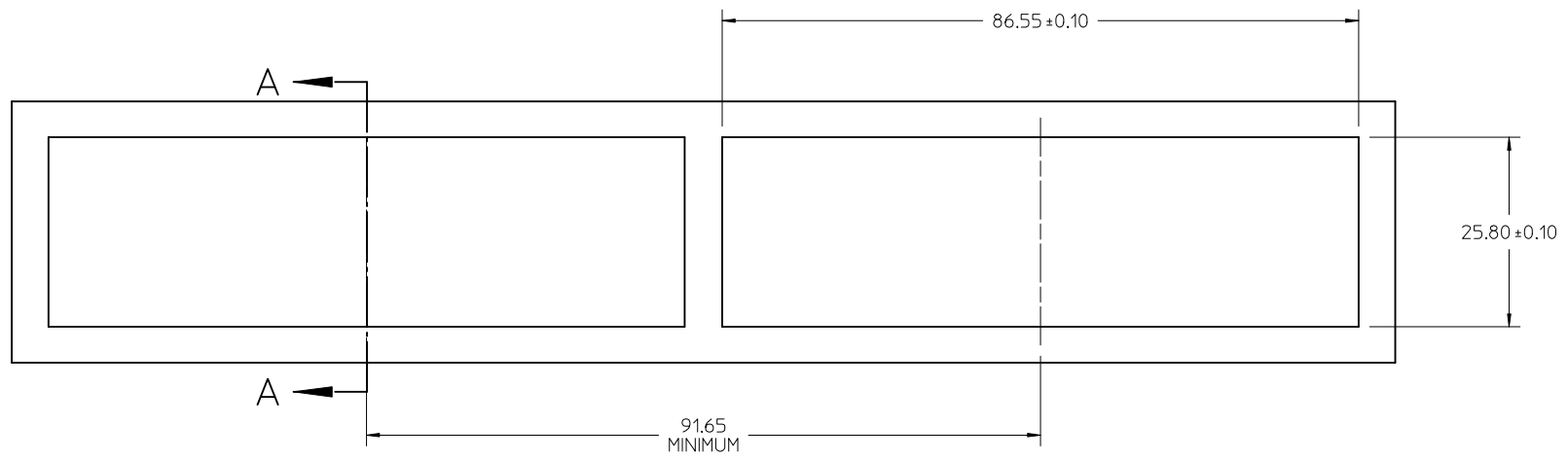
DETAIL A
SCALE 6:1

RECOMMENDED PCB LAYOUT - COMPONENT SIDE
RECOMMENDED PCB THICKNESS - 2.36 MM (.093 INCH)

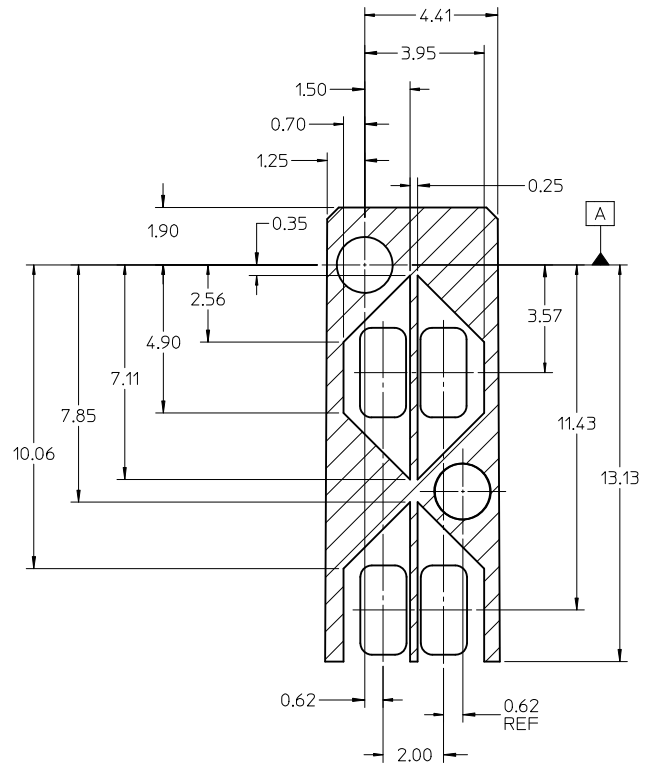
THE ENTIRE AREA OF THE CONNECTOR FOOTPRINT
TO BE CONSIDERED THE KEEP OUT AREA FOR COMPONENTS
(OTHER THAN LIGHTPIPE LED'S).

THIS AREA IS INDICATED BY THE DASHED LINE

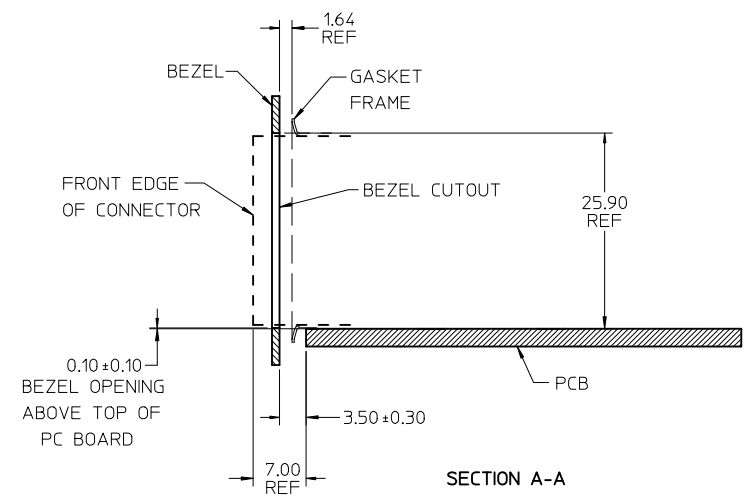
| | | | | | | |
|---|-----------------|---|---|--|-------------------------------|------------------------|
| CHG DETAIL CALLOUT EC NO: UCP2011-2594 DRWN:WOLFE 2011/03/08 CHKD:BBARKER 2011/03/08 APPR:SMILLER 2011/09/20 REV: | QUALITY SYMBOLS | GENERAL TOLERANCES (UNLESS SPECIFIED) | DIMENSION STYLE MM ONLY | SCALE 3:1 | DESIGN UNITS METRIC | THIRD ANGLE PROJECTION |
| | ▽=0 | mm INCH | DRAWN BY DATE JLONG 01-18-2007 | TITLE STACKED SFP+ 2X6 ASS'Y WITH ELASTOMERIC GASKET | | |
| | ▽=0 | 4 PLACES ± --- ± --- 3 PLACES ± --- ± --- 2 PLACES ± 0.13 ± --- 1 PLACE ± 0.25 ± --- | CHECKED BY DATE MSANDBERG 01-18-2007 | APPROVED BY DATE RNELSON 01-18-2007 | | |
| | ▽=0 | ANGULAR ± 5 ° | MATERIAL NO. SEE TABLE | DOCUMENT NO. SD-76094-001 | SHEET NO. 3 OF 4 | |
| DRAFT WHERE APPLICABLE MUST REMAIN WITHIN DIMENSIONS | | THIS DRAWING CONTAINS INFORMATION THAT IS PROPRIETARY TO MOLEX INCORPORATED AND SHOULD NOT BE USED WITHOUT WRITTEN PERMISSION | | | | |



BEZEL CUTOUT CENTER SPACING DETAIL
BEZEL THICKNESS 0.8 - 2.6



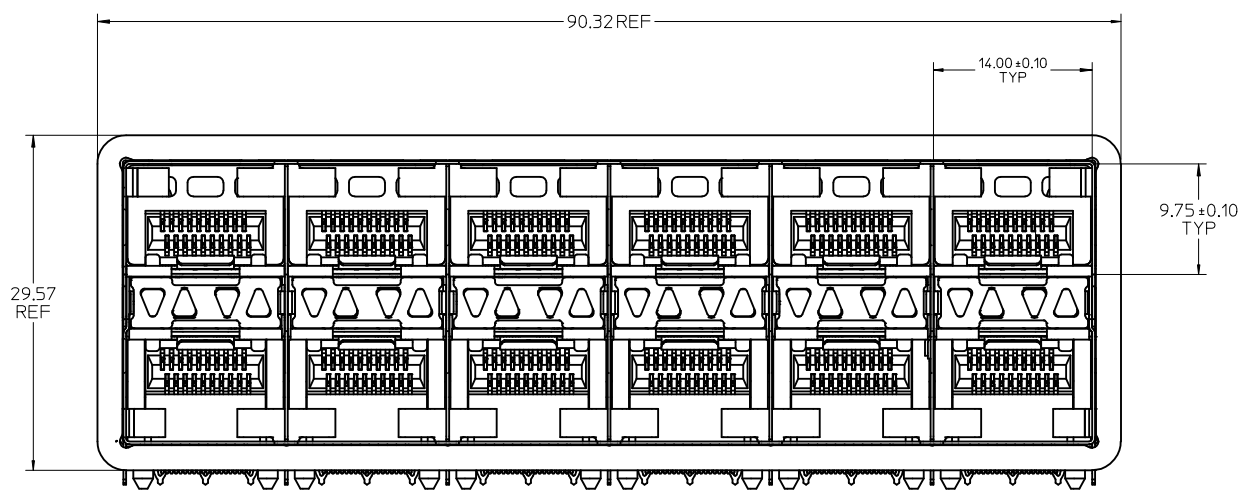
KEEPOUT ZONE DETAIL
SCALE 8:1



SECTION A-A

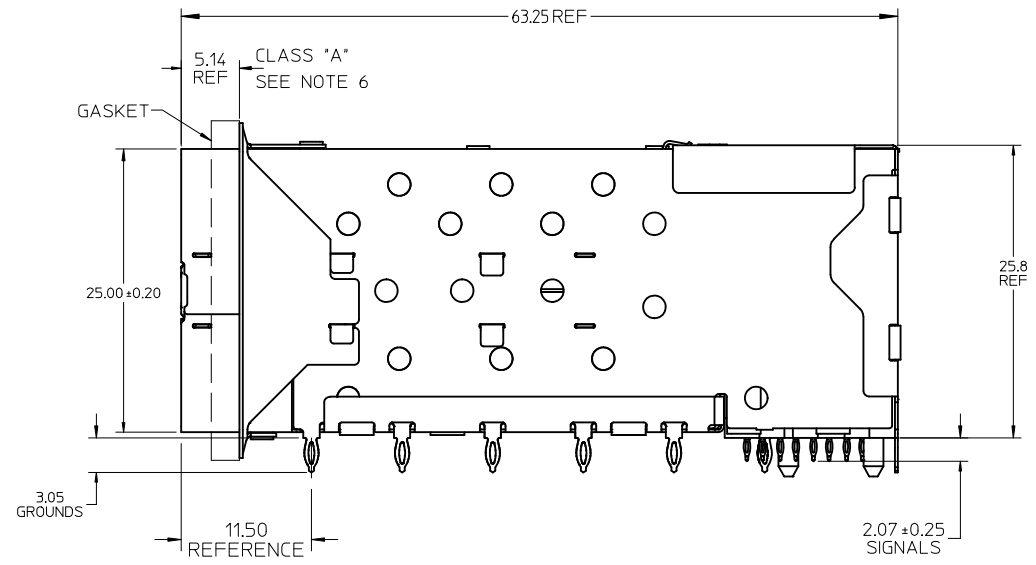
| | | | | | | | | | | |
|---|--------------------------------------|--|--|-----------------------------------|--------------------|---|-------------------------------|-------------------------------------|----------------------------|--|
| ADD SECOND BEZEL CUTOUT EC NO: UCP2011-2594 DRWN:WOLFE 2011/03/08 CHKD:BBARKER 2011/03/08 APPR:SMILLER 2011/09/20 | QUALITY SYMBOLS ∇=0 ∇=0 ∇=0 | GENERAL TOLERANCES (UNLESS SPECIFIED) | | DIMENSION STYLE MM ONLY | | SCALE 2:1 | DESIGN UNITS METRIC | THIRD ANGLE PROJECTION | | |
| | | | | DRAWN BY JLONG | DATE 01-18-2007 | TITLE STACKED SFP+ 2X6 ASS'Y WITH ELASTOMERIC GASKET | | | | |
| | | | | CHECKED BY MSANDBERG | DATE 01-18-2007 | MOLEX INCORPORATED | | | | |
| | | | | APPROVED BY RNELSON | DATE 01-18-2007 | MATERIAL NO. SEE TABLE | | DOCUMENT NO. SD-76094-001 | SHEET NO. 4 OF 4 | |
| REV D | DESCRIPTION | DRAFT WHERE APPLICABLE MUST REMAIN WITHIN DIMENSIONS | | SIZE C | | THIS DRAWING CONTAINS INFORMATION THAT IS PROPRIETARY TO MOLEX INCORPORATED AND SHOULD NOT BE USED WITHOUT WRITTEN PERMISSION | | | | |

| PART NUMBER | DESCRIPTION | VIEW | COMPLIANT TAIL PLATING |
|-------------|---------------|----------|------------------------|
| | 4 LIGHT PORTS | SEE PG 2 | TIN / LEAD |
| 760946002 | INNER 2 PORTS | SEE PG 2 | TIN / LEAD |
| | OUTER 2 PORTS | SEE PG 2 | TIN / LEAD |
| | 4 LIGHT PORTS | SEE PG 2 | TIN |
| 760947002 | INNER 2 PORTS | SEE PG 2 | TIN |
| | OUTER 2 PORTS | SEE PG 2 | TIN |



NOTES:

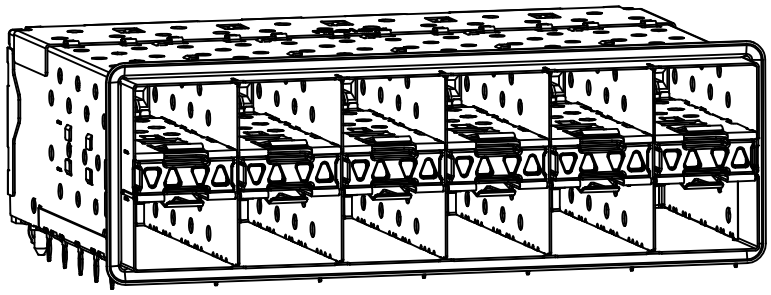
- MATERIAL:**
 - CAGE: NICKEL SILVER, THICKNESS: 0.25mm
 - GASKET FLANGE: STAINLESS STEEL
 - EMI GASKET: CONDUCTIVE POLYMER
 - CONNECTOR HOUSING: GLASS FILLED LIQUID CRYSTAL POLYMER (LCP), UL 94V-0, COLOR: BLACK
 - OVERMOLD TERMINAL HOUSING: GLASS FILLED LIQUID CRYSTAL POLYMER (LCP), UL 94V-0, COLOR: BLACK
 - TERMINALS: BRASS
 - LIGHT PIPE: POLYCARBONATE UL 94V-0; COLOR CLEAR
 - LIGHT PIPE HOUSING: ZINC
- FINISH**
 - TERMINALS:**
 - CONTACT AREA: 0.76 MICROMETERS MINIMUM HARD GOLD OVER 1.27 MICROMETERS MINIMUM NICKEL.
 - COMPLIANT TAIL - TIN/LEAD OPTION: 0.76 - 1.52 MICROMETERS 90/10 TIN/LEAD OVER 0.76 - 1.52 MICROMETERS NICKEL
 - COMPLIANT TAIL - TIN OPTION: 0.76 - 1.52 MICROMETERS TIN OVER 0.76 - 1.52 MICROMETERS NICKEL
 - LIGHT PIPE HOUSING: 80 MICROMETERS MINIMUM NICKEL OVER 30 MICROMETERS MINIMUM COPPER
- REFER TO PS-75310-001 PRODUCT SPEC FOR ALL ELECTRICAL, MECHANICAL AND ENVIRONMENTAL SPECIFICATIONS.
- LIGHT PIPE PAD LAYOUT IS FOR 0805 LOW-PROFILE LED PACKAGE FOR OTHER RECOMMENDED LAYOUTS REFER TO MOLEX'S REPORT TS-75310-001.
- REFER TO PK-75451-001 FOR ALL PACKAGING SPECIFICATIONS.
- THE SURFACES CONFORM TO THE MOLEX COSMETIC SPEC PS-45499-002. ALL EXTERIOR SURFACES TO BE CLASS "B" SURFACE EXCEPT THE UNDERSIDE (CLASS "C") OF THE CAGE (SIDE TOWARD THE PCB) AND AS OTHERWISE NOTED.



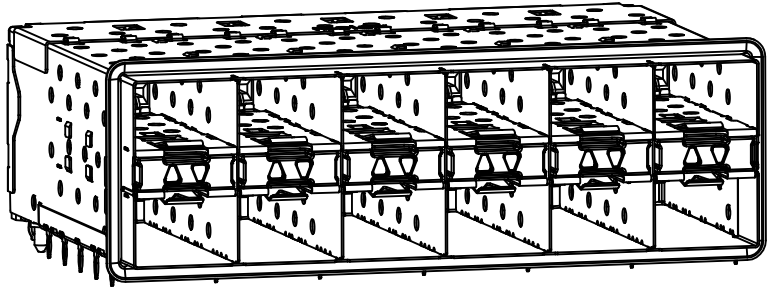
| | | | | | | | | | |
|---|--------------------------------------|---|------------------------|-----------------------------------|---|-------------------------------|------------------------|--|--|
| ADD -7002 ASSEMBLY EC NO: UCP2011-3362 DRWN:BBARKER 2011/05/01 CHKD:BSMART APPR:SMILLER 2011/05/09 | QUALITY SYMBOLS ∇=0 ∇=0 ∇=0 | GENERAL TOLERANCES (UNLESS SPECIFIED) | | DIMENSION STYLE MM ONLY | SCALE 3:1 | DESIGN UNITS METRIC | THIRD ANGLE PROJECTION | | |
| | | mm INCH | DRAWN BY BBARKER | DATE 2010/10/19 | TITLE STACKED SFP+ 2X6 ASS'Y WITH ELASTOMERIC GASKET ENHANCED EMI SHIELDING | | | | |
| | | 4 PLACES ± --- ± --- 3 PLACES ± --- ± --- 2 PLACES ± 0.13 ± --- 1 PLACE ± 0.25 ± --- | CHECKED BY SMILLER | DATE 2011/05/09 | MOLEX INCORPORATED | | | | |
| | | ANGULAR ± 5 ° | APPROVED BY SMILLER | MATERIAL NO. SEE TABLE | DOCUMENT NO. SD-76094-003 | SHEET NO. 1 OF 4 | | | |

DRAFT WHERE APPLICABLE MUST REMAIN WITHIN DIMENSIONS

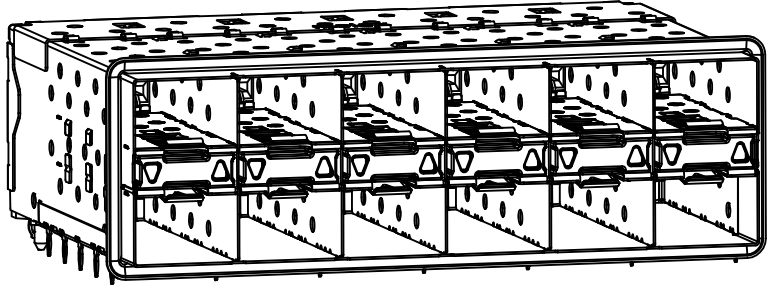
THIS DRAWING CONTAINS INFORMATION THAT IS PROPRIETARY TO MOLEX INCORPORATED AND SHOULD NOT BE USED WITHOUT WRITTEN PERMISSION



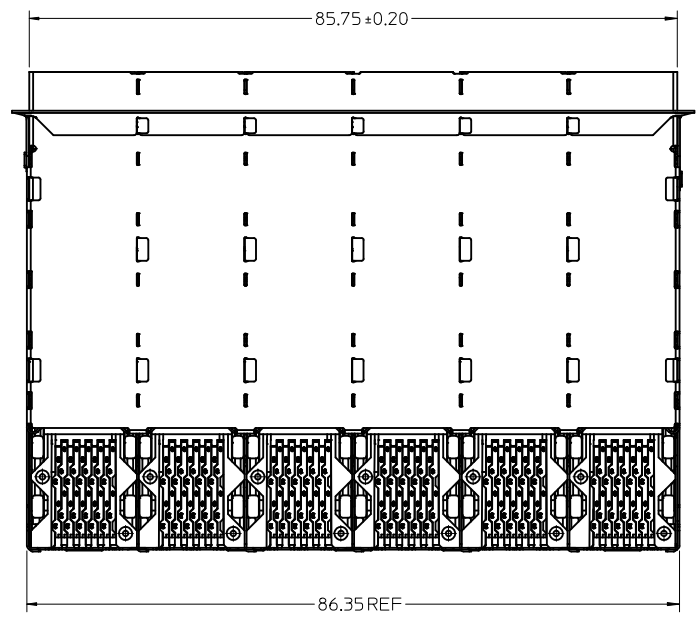
WITH INNER AND OUTER LIGHT PIPES



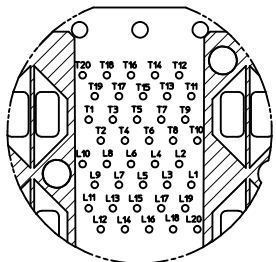
760946002 AND 760947002
WITH INNER LIGHT PIPES



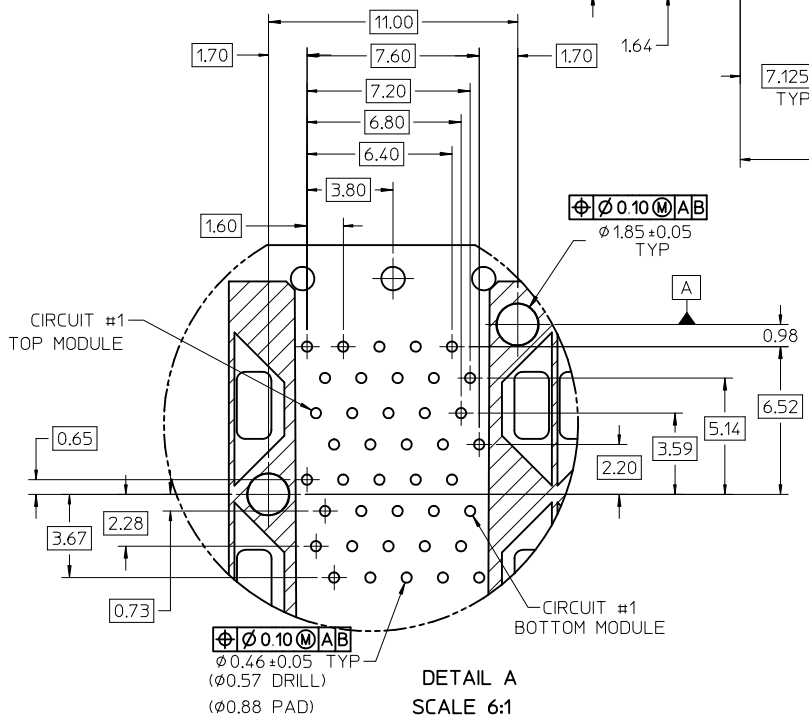
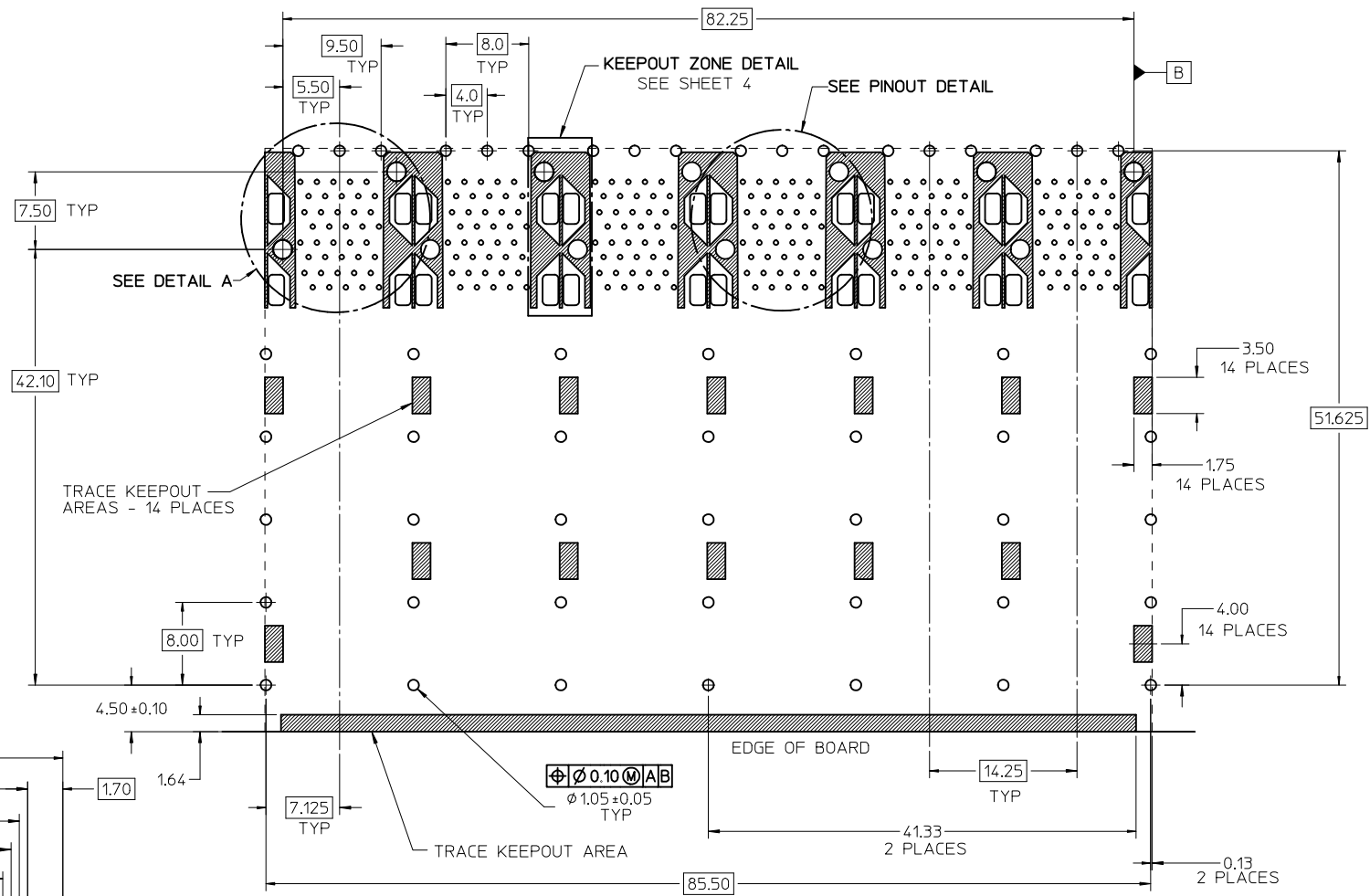
WITH OUTER LIGHT PIPES

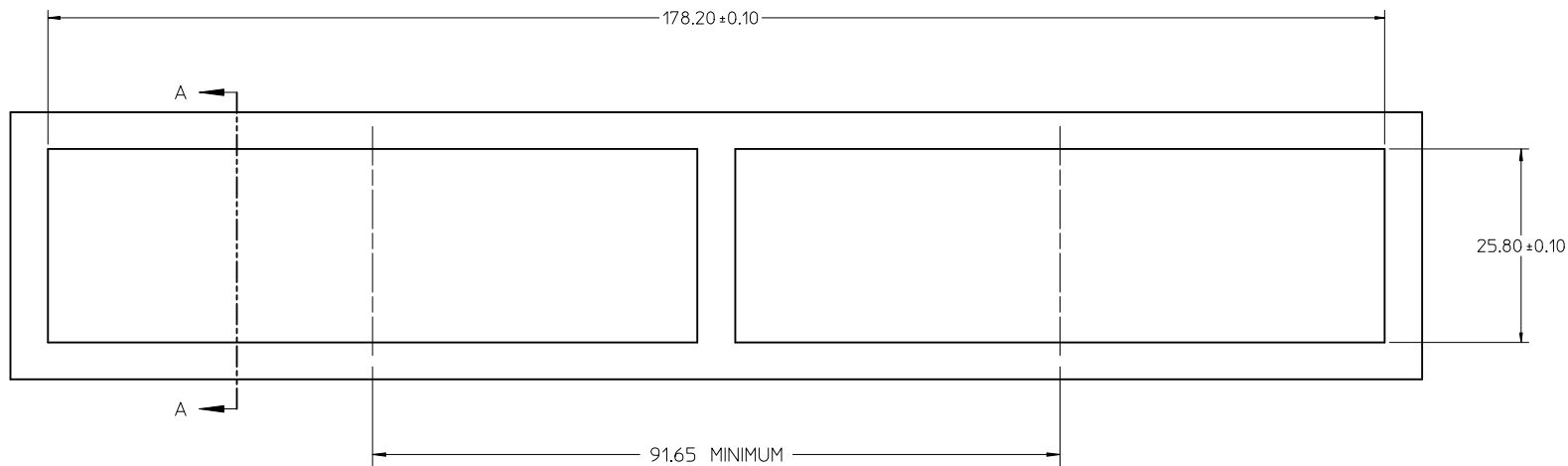


| SEE SHEET 1 EC NO: UCP2011-3362 DRWN:BBARKER 2011/05/01 CHKD:BSMART APPR:SMILLER 2011/05/09 | QUALITY SYMBOLS ▽=0 ▽=0 ▽=0 | GENERAL TOLERANCES (UNLESS SPECIFIED) <table border="1"> <tr> <th></th> <th>mm</th> <th>INCH</th> </tr> <tr> <td>4 PLACES ±</td> <td>---</td> <td>---</td> </tr> <tr> <td>3 PLACES ±</td> <td>---</td> <td>---</td> </tr> <tr> <td>2 PLACES ±</td> <td>0.13</td> <td>---</td> </tr> <tr> <td>1 PLACE ±</td> <td>0.25</td> <td>---</td> </tr> </table> | | mm | INCH | 4 PLACES ± | --- | --- | 3 PLACES ± | --- | --- | 2 PLACES ± | 0.13 | --- | 1 PLACE ± | 0.25 | --- | DIMENSION STYLE MM ONLY DRAWN BY DATE BBARKER 2010/10/19 CHECKED BY DATE | SCALE 2:1 DESIGN UNITS METRIC | THIRD ANGLE PROJECTION |
|---|---|--|---|--------------------|----------------------------|------------|-----|-----|------------|-----|-----|------------|------|-----|-----------|------|-----|---|--|------------------------|
| | | mm | INCH | | | | | | | | | | | | | | | | | |
| | 4 PLACES ± | --- | --- | | | | | | | | | | | | | | | | | |
| | 3 PLACES ± | --- | --- | | | | | | | | | | | | | | | | | |
| 2 PLACES ± | 0.13 | --- | | | | | | | | | | | | | | | | | | |
| 1 PLACE ± | 0.25 | --- | | | | | | | | | | | | | | | | | | |
| DESCRIPTION REV B | ANGULAR ± 5 ° DRAFT WHERE APPLICABLE MUST REMAIN WITHIN DIMENSIONS | APPROVED BY DATE SMILLER 2011/05/09 MATERIAL NO. SEE SHEET 1 | TITLE STACKED SFP+ 2X6 ASS'Y WITH ELASTOMERIC GASKET ENHANCED EMI SHIELDING | MOLEX INCORPORATED | SHEET NO. 2 OF 4 | | | | | | | | | | | | | | | |
| | | SIZE C THIS DRAWING CONTAINS INFORMATION THAT IS PROPRIETARY TO MOLEX INCORPORATED AND SHOULD NOT BE USED WITHOUT WRITTEN PERMISSION | | | | | | | | | | | | | | | | | | |
| | | | | | | | | | | | | | | | | | | | | |

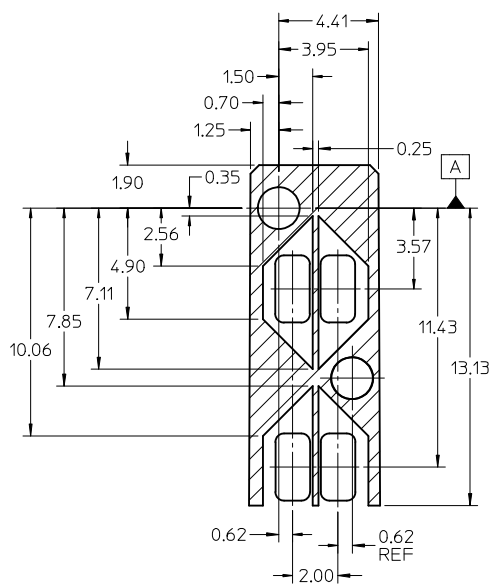


CONNECTOR PIN-OUT DETAIL
COMPONENT SIDE OF BOARD

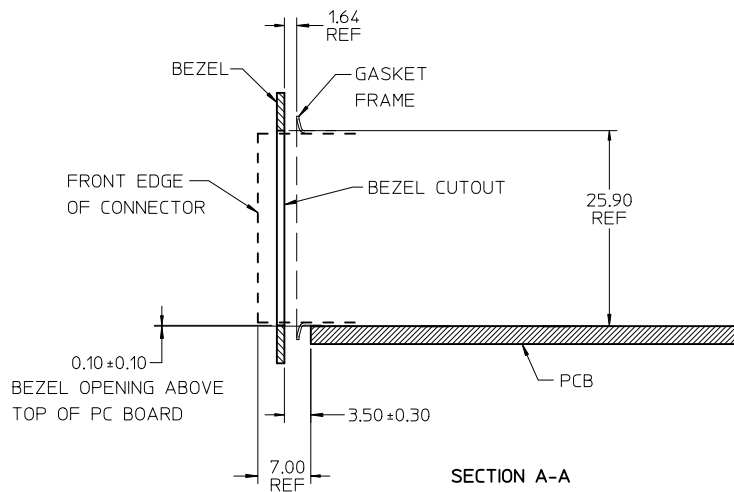




BEZEL CUTOUT CENTER SPACING DETAIL
BEZEL THICKNESS 0.8 - 2.6



KEEPOUT ZONE DETAIL
SCALE 6:1



SECTION A-A

| | | | | | | |
|--|---------------------|--|--|--|--|--|
| SEE SHEET 1 EC NO: UCP2011-3362 DRW:BBARKER 2011/05/01 CHKD:BSMART APPR:SMILLER 2011/05/09 | DESCRIPTION REV: | QUALITY SYMBOLS ∇=0 ∇=0 ∇=0 | GENERAL TOLERANCES (UNLESS SPECIFIED) mm INCH 4 PLACES ± --- ± --- 3 PLACES ± --- ± --- 2 PLACES ± 0.13 ± --- 1 PLACE ± 0.25 ± --- ANGULAR ± 5 ° | DIMENSION STYLE MM ONLY DRAWN BY DATE BBARKER 2010/10/19 CHECKED BY DATE | SCALE 2:1 DESIGN UNITS METRIC THIRD ANGLE PROJECTION | TITLE STACKED SFP+ 2X6 ASS'Y WITH ELASTOMERIC GASKET ENHANCED EMI SHIELDING |
| | | APPROVED BY DATE SMILLER 2011/05/09 | MOLEX INCORPORATED | | | |
| | | MATERIAL NO. SEE SHEET 1 | DOCUMENT NO. SD-76094-003 | | | |
| | | DRAFT WHERE APPLICABLE MUST REMAIN WITHIN DIMENSIONS | SHEET NO. 4 OF 4 | | | |