

MATERIAL NUMBER	# OF COLUMNS	# OF DIFF PAIR	DIM 'A' MAX	DIM 'B'	PTH ϕ
76500-#8**	8	32	22.80	13.30	0.46±0.05
76500-#1**	10	40	26.60	17.10	0.46±0.05
76500-#6**	16	64	38.00	28.50	0.46±0.05
76500-#8**	8	32	22.80	13.30	0.39±0.05
76500-#1**	10	40	26.60	17.10	0.39±0.05
76500-#6**	16	64	38.00	28.50	0.39±0.05

76500-****

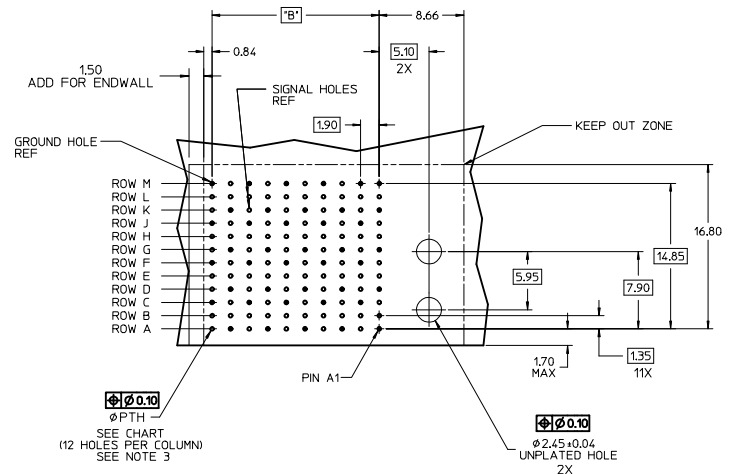
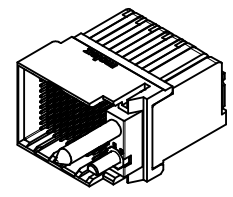
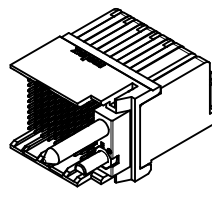
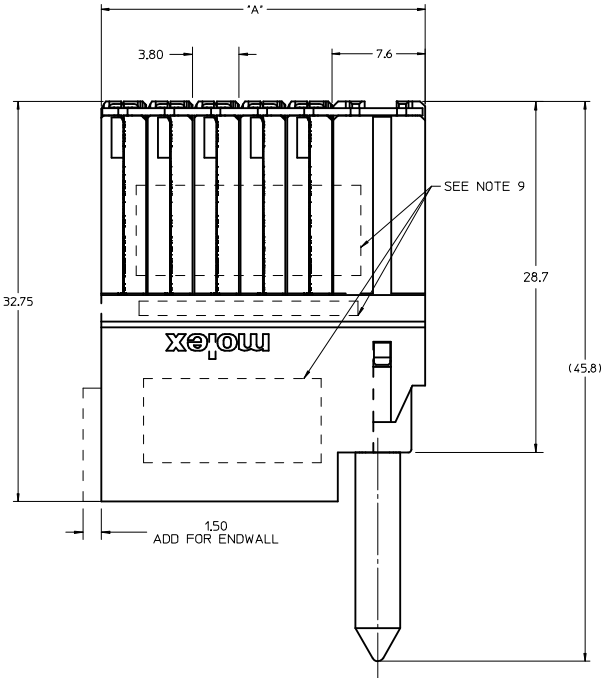
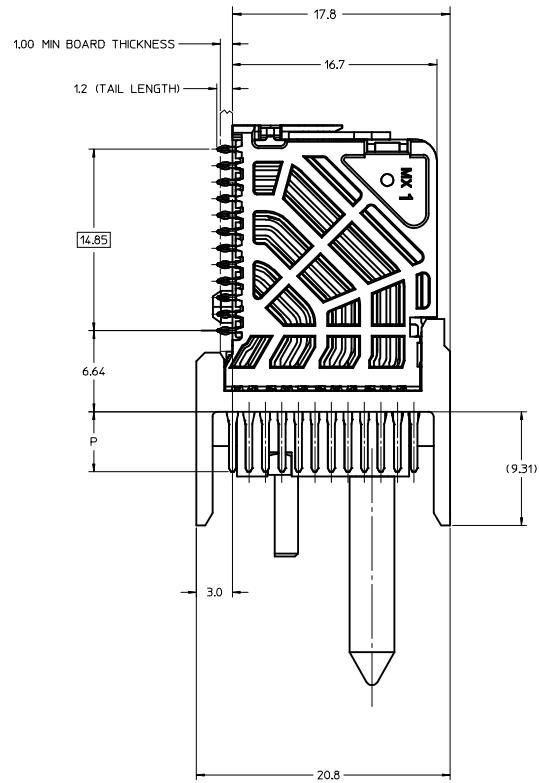
MODULE TYPE
 5 = RIGHT GUIDED, LEAD-FREE
 9 = RIGHT GUIDED, LEAD-FREE W/ ENDWALL

OF COLUMNS
 1 = 10 COLUMNS
 6 = 16 COLUMNS
 8 = 8 COLUMNS

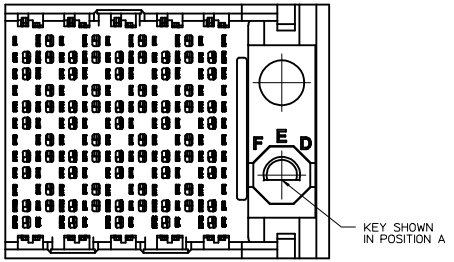
PIN LENGTH (P)
 4 = 4.90 (0.46 PTH)
 5 = 5.50 (0.46 PTH)
 7 = 4.90 (0.39 PTH)
 8 = 5.50 (0.39 PTH)

KEY ORIENTATION
 0 = NO KEY
 1 = A 5 = E
 2 = B 6 = F
 3 = C 7 = G
 4 = D 8 = H

- NOTES:
- MATERIALS: HOUSING - LIQUID CRYSTAL POLYMER (LCP), GLASS-FILLED, UL94V-0
TERMINALS - HIGH PERFORMANCE COPPER ALLOY
 - FINISH: 304N SELECTIVE GOLD IN CONTACT AREA, SELECTIVE TIN ON PCB TAILS, NICKEL OVERALL.
 - REFER TO MOLEX PRODUCT SPECIFICATION PS-76060-999 FOR PERFORMANCE SPECIFICATIONS AND ADDITIONAL PCB INFORMATION.
 - EACH SIGNAL WAFER CONTAINS 2 COLUMNS OF TERMINALS.
 - PRODUCT IS PACKAGED PER PK-70873-041.
 - THIS PART CONFORMS TO CLASS B REQUIREMENTS OF COSMETIC SPEC PS-45499-002.7. REFER TO MOLEX SALES DRAWING SD-76160-002 FOR THE MATING RECEPTACLES.
 - REFER TO MOLEX PCB ROUTING GUIDE AS-76060-990 FOR ANTIPAD AND ROUTING RECOMMENDATIONS.
 - WHEN USING MOLEX SUPPLIED #2-32 SCREW 73726-0000 (9.50mm ±0.38 THREADABLE SCREW LENGTH), THE MAXIMUM BOARD THICKNESS IS 4.4mm.
 - GUIDE RIGHT RAM MATES WITH A GUIDE LEFT DAUGHTERCARD.
 - MARKING: LOCATED APPROXIMATELY AS SHOWN. PART NUMBER AND DATE CODE.



RAM HOLE PATTERN (CONNECTOR SIDE)

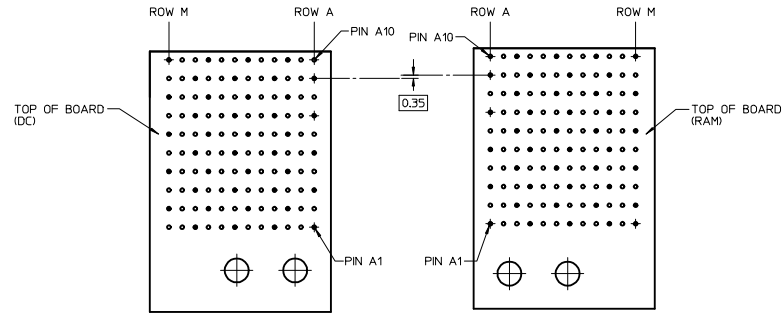
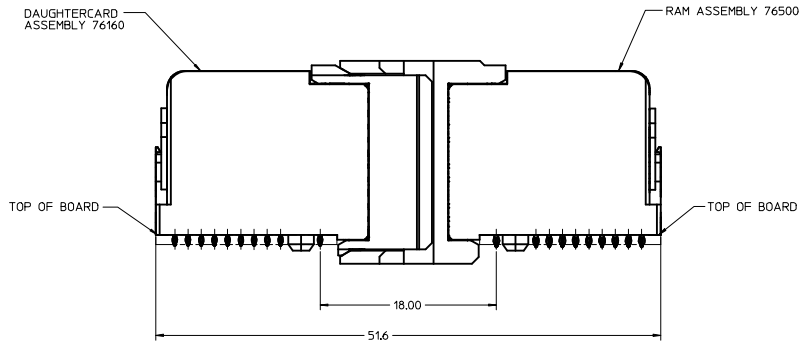


ADD LASER MARK INFO EC NO: UCP2016-3973 DRAWN BY: DRWINDHARVARA CHKD: ELO APPR: ELO DATE: 2015/07/29 DATE: 2016/02/22 DATE: 2016/04/20	QUALITY SYMBOLS ∇=0 ∇=0 ∇=0	GENERAL TOLERANCES (UNLESS SPECIFIED):		DIMENSION STYLE MM ONLY	SCALE 5:1	DESIGN UNITS METRIC	THIRD ANGLE PROJECTION
		4 PLACES ±0.13 mm ±0.005 INCH 3 PLACES ±0.25 mm ±0.010 INCH 2 PLACES ±0.38 mm ±0.015 INCH 1 PLACE ±0.51 mm ±0.020 INCH 0 PLACE ±0.64 mm ±0.025 INCH	DRAWN BY: JOUILLES CHECKED BY: JLAURX APPROVED BY: JLAURX DATE: 2008/12/10 DATE: 2008/12/11 DATE: 2008/12/12	TITLE IMPACT 4 PAIR RAM GUIDE RIGHT SIGNAL MODULE SALES DWG	MOLEX		
		ANGULAR ±1/2° DRAFT WHERE APPLICABLE MUST REMAIN WITHIN DIMENSIONS	SIZE D	MATERIAL NO. SD-76500-004 DOCUMENT NO. SD-76500-004	SHEET NO. 1 OF 2		
		THIS DRAWING CONTAINS INFORMATION THAT IS PROPRIETARY TO MOLEX INCORPORATED AND SHOULD NOT BE USED WITHOUT WRITTEN PERMISSION					

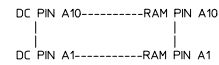
20 19 18 17 16 15 14 13 12 11 10 9 8 7 6 5 4 3 2 1

M
L
K
J
I
H
G
F
E
D
C
B
A

COPLANAR APPLICATION



COPLANAR MATED SIGNAL PATHS



SEE SHEET 1 ELEC NO. UCF2016-3973 DRAWN: VARVARA CHKD: TELO APPR: TELO DATE: 2015/07/29 DATE: 2016/02/22 DATE: 2016/04/20	QUALITY SYMBOLS	GENERAL TOLERANCES (UNLESS SPECIFIED)	DIMENSION STYLE	SCALE	DESIGN UNITS	THIRD ANGLE PROJECTION	
	▽=0	mm INCH	MM ONLY	4:1	METRIC	☉	
	▽=0	4 PLACES ± --- ± ---	DRAWN BY	DATE	TITLE	IMPACT 4 PAIR RAM GUIDE RIGHT SIGNAL MODULE SALES DWG	
	▽=0	3 PLACES ± 0.13 ± 0.25	CHECKED BY	DATE	molex		
	ANGULAR ±1/2°	DRAFT WHERE APPLICABLE MUST REMAIN WITHIN DIMENSIONS	MATERIAL NO.	DATE	DOCUMENT NO.	SHEET NO.	
			SEE TABLE	2008/12/10	SD-76500-004	2 OF 2	
			THIS DRAWING CONTAINS INFORMATION THAT IS PROPRIETARY TO MOLEX INCORPORATED AND SHOULD NOT BE USED WITHOUT WRITTEN PERMISSION				

19 18 17 16 15 14 13 12 11 10 9 8 7 6 5 4 3 2 1

MATERIAL NUMBER	# OF COLUMNS	# OF DIFF PAIR	DIM 'A' MAX	DIM 'B'	PTH ϕ
76500-#8**	8	32	22.80	13.30	0.46±0.05
76500-#1**	10	40	26.60	17.10	0.46±0.05
76500-#6**	16	64	38.00	28.50	0.46±0.05
76500-#8**	8	32	22.80	13.30	0.39±0.05
76500-#1**	10	40	26.60	17.10	0.39±0.05
76500-#6**	16	64	38.00	28.50	0.39±0.05

76500-***

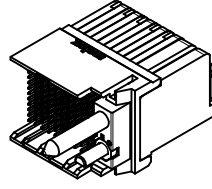
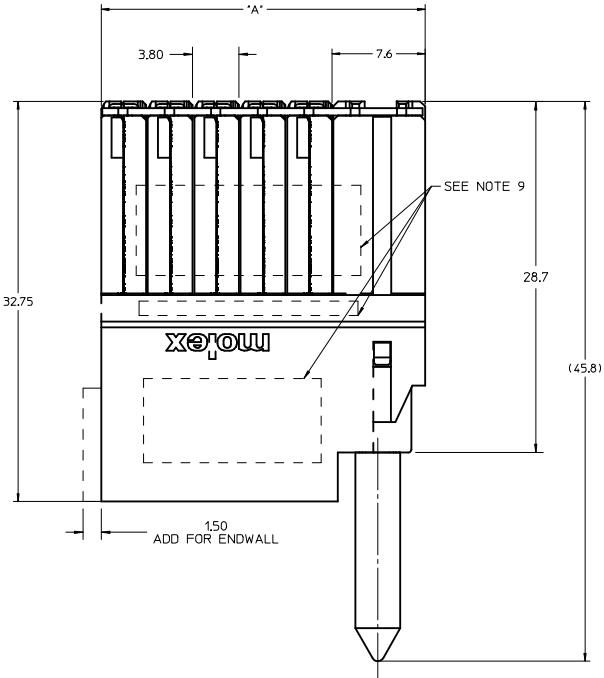
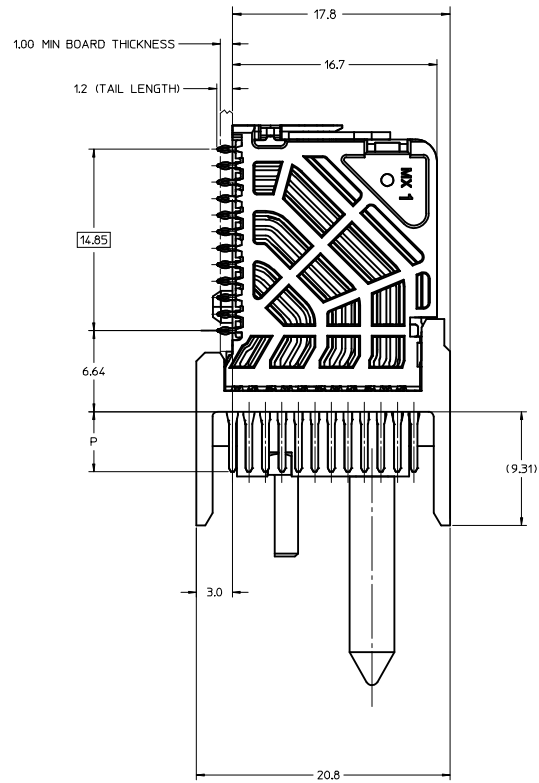
MODULE TYPE
 5 = RIGHT GUIDED, LEAD-FREE
 9 = RIGHT GUIDED, LEAD-FREE W/ ENDWALL

OF COLUMNS
 1 = 10 COLUMNS
 6 = 16 COLUMNS
 8 = 8 COLUMNS

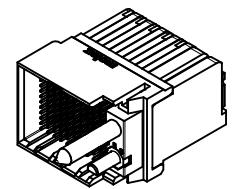
PIN LENGTH (P)
 4 = 4.90 (0.46 PTH)
 5 = 5.50 (0.46 PTH)
 7 = 4.90 (0.39 PTH)
 8 = 5.50 (0.39 PTH)

KEY ORIENTATION
 0 = NO KEY
 1 = A 5 = E
 2 = B 6 = F
 3 = C 7 = G
 4 = D 8 = H

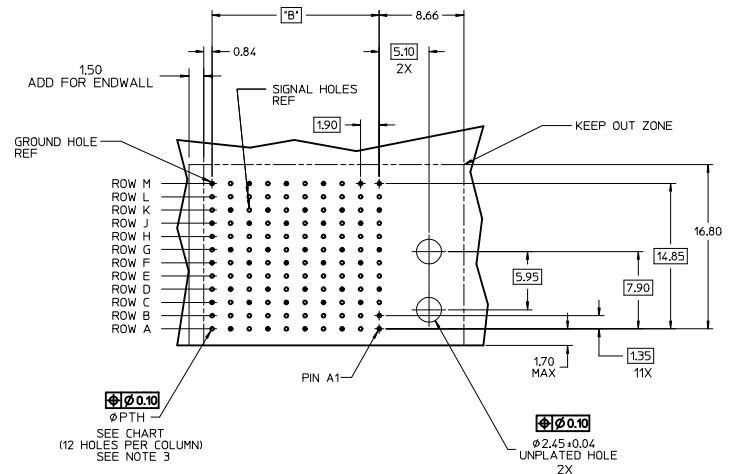
- NOTES:
- MATERIALS: HOUSING - LIQUID CRYSTAL POLYMER (LCP), GLASS-FILLED, UL94V-0
TERMINALS - HIGH PERFORMANCE COPPER ALLOY
 - FINISH: 304N SELECTIVE GOLD IN CONTACT AREA, SELECTIVE TIN ON PCB TAILS, NICKEL OVERALL.
 - REFER TO MOLEX PRODUCT SPECIFICATION PS-76060-999 FOR PERFORMANCE SPECIFICATIONS AND ADDITIONAL PCB INFORMATION.
 - EACH SIGNAL WAFER CONTAINS 2 COLUMNS OF TERMINALS.
 - PRODUCT IS PACKAGED PER PK-70873-041.
 - THIS PART CONFORMS TO CLASS B REQUIREMENTS OF COSMETIC SPEC PS-45499-002.7. REFER TO MOLEX SALES DRAWING SD-76160-002 FOR THE MATING RECEPTACLES.
 - REFER TO MOLEX PCB ROUTING GUIDE AS-76060-990 FOR ANTIPAD AND ROUTING RECOMMENDATIONS.
 - WHEN USING MOLEX SUPPLIED #2-32 SCREW 73726-0000 (9.50mm ±0.38 THREADABLE SCREW LENGTH), THE MAXIMUM BOARD THICKNESS IS 4.4mm.
 - GUIDE RIGHT RAM MATES WITH A GUIDE LEFT DAUGHTERCARD.
 - MARKING: LOCATED APPROXIMATELY AS SHOWN. PART NUMBER AND DATE CODE.



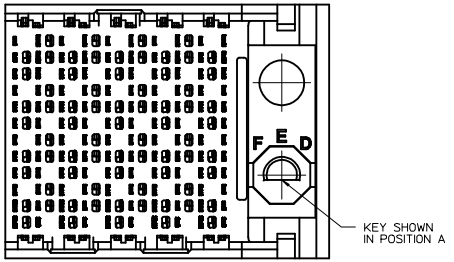
OPEN END OPTION



ENDWALL OPTION



RAM HOLE PATTERN (CONNECTOR SIDE)



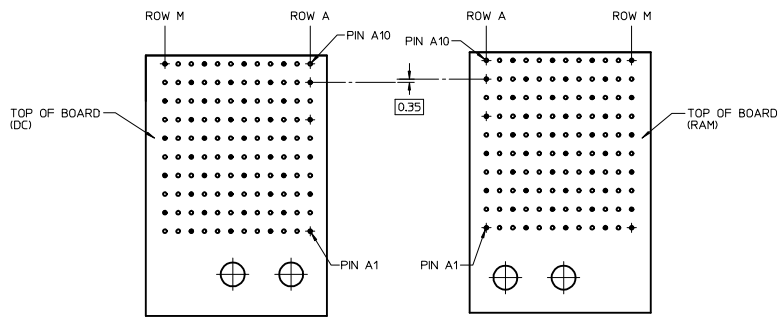
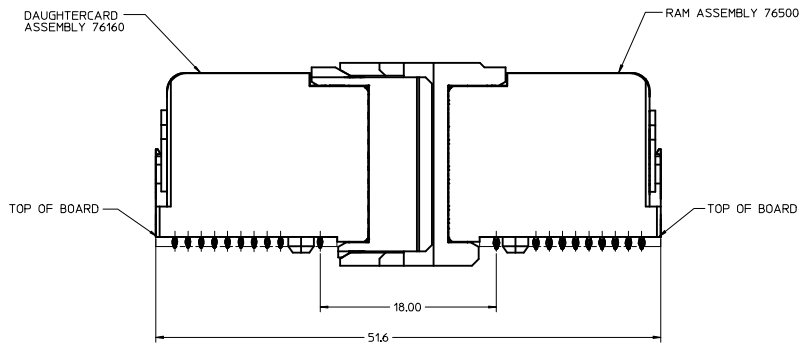
KEY SHOWN IN POSITION A

ADD LASER MARK INFO EC NO: UCP2016-3973 DRAWN BY: DRWINDHARVARA CHKD: ELO APPR: ELO DATE: 2015/07/29 2016/02/22 2016/04/20	QUALITY SYMBOLS ∇=0 ∇=0 ∇=0	GENERAL TOLERANCES (UNLESS SPECIFIED): mm INCH		DIMENSION STYLE MM ONLY	SCALE 5:1	DESIGN UNITS METRIC	THIRD ANGLE PROJECTION		
		4 PLACES ±--- +--- 3 PLACES ±--- +--- 2 PLACES ±0.13 +--- 1 PLACE ±0.25 +--- 0 PLACE ±--- +---		DRAWN BY: JOUILLES CHECKED BY: JLAURX APPROVED BY: JLAURX DATE: 2008/12/10 DATE: 2008/12/11 DATE: 2008/12/12	TITLE IMPACT 4 PAIR RAM GUIDE RIGHT SIGNAL MODULE SALES DWG	molex			
		ANGULAR ±1/2° DRAFT WHERE APPLICABLE MUST REMAIN WITHIN DIMENSIONS		SIZE D	MATERIAL NO. SEE TABLE	DOCUMENT NO. SD-76500-004	SHEET NO. 1 OF 2		
		THIS DRAWING CONTAINS INFORMATION THAT IS PROPRIETARY TO MOLEX INCORPORATED AND SHOULD NOT BE USED WITHOUT WRITTEN PERMISSION							

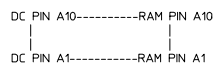
20 19 18 17 16 15 14 13 12 11 10 9 8 7 6 5 4 3 2 1

M
L
K
J
I
H
G
F
E
D
C
B
A

COPLANAR APPLICATION



COPLANAR MATED SIGNAL PATHS



SEE SHEET 1 ELEC NO. UCF2016-3973 DRAWN: VARVARA CHKD: TELO APPR: TELO DATE: 2015/07/29 DATE: 2016/02/22 DATE: 2016/04/20	QUALITY SYMBOLS	GENERAL TOLERANCES (UNLESS SPECIFIED)	DIMENSION STYLE	SCALE	DESIGN UNITS	THIRD ANGLE PROJECTION
	▽=0	mm INCH	MM ONLY	4:1	METRIC	☉
	▽=0	4 PLACES ± ---	DRAWN BY	DATE	TITLE	
	▽=0	3 PLACES ± ---	JOUILES	2008/12/10	IMPACT 4 PAIR RAM GUIDE RIGHT SIGNAL MODULE SALES DWG	
	2 PLACES ± 0.13	CHECKED BY	DATE	DOCUMENT NO.		SHEET NO.
	1 PLACE ± 0.25	JLAURX	2008/12/11	SD-76500-004		2 OF 2
	0 PLACE ± ---	APPROVED BY	DATE	MATERIAL NO.		
		JLAURX	2008/12/12	SEE TABLE		
		ANGULAR ±1/2°		THIS DRAWING CONTAINS INFORMATION THAT IS PROPRIETARY TO MOLEX		
		DRAFT WHERE APPLICABLE		INCORPORATED AND SHOULD NOT BE USED WITHOUT WRITTEN PERMISSION		
		MUST REMAIN WITHIN DIMENSIONS				

19 18 17 16 15 14 13 12 11 10 9 8 7 6 5 4 3 2 1