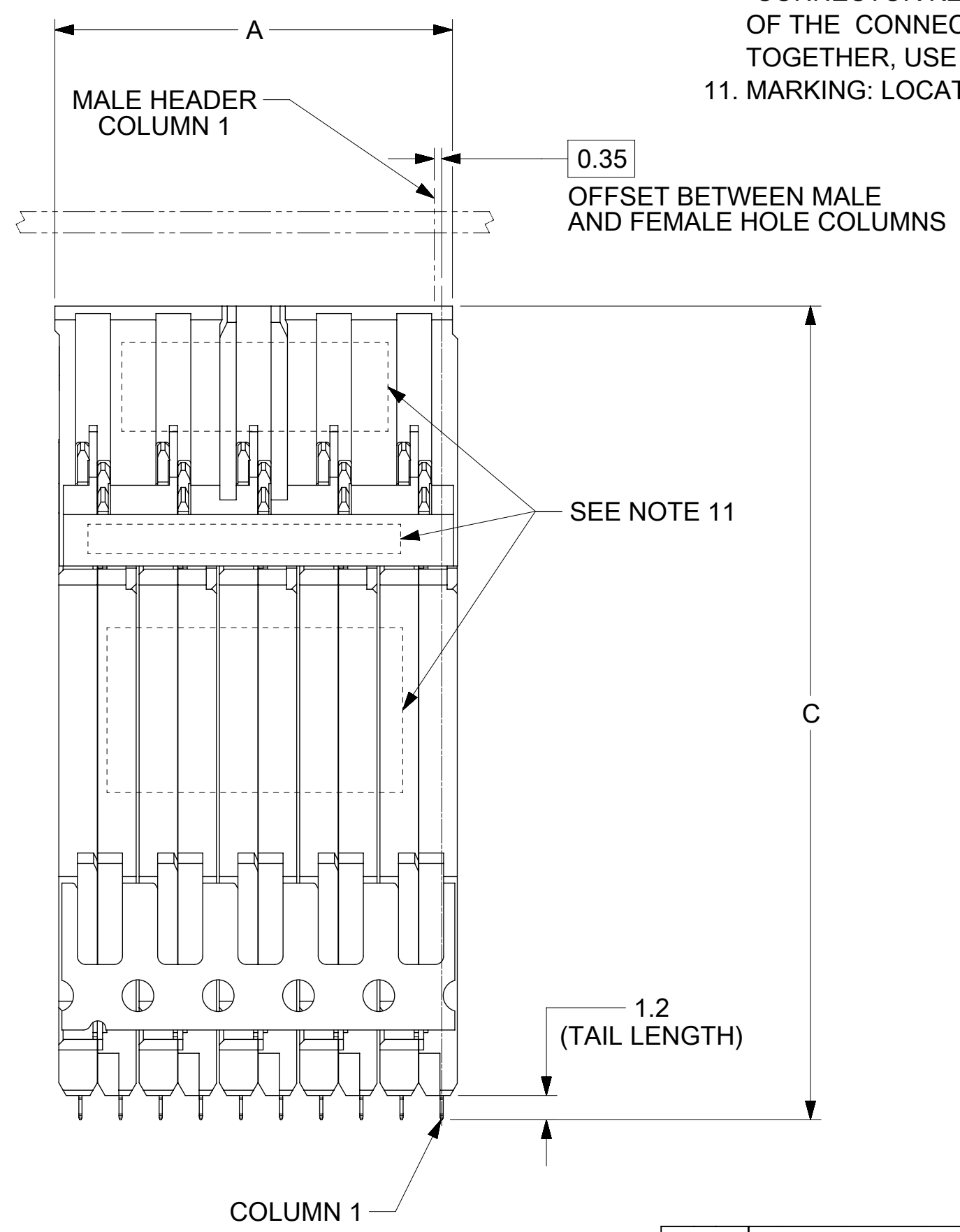
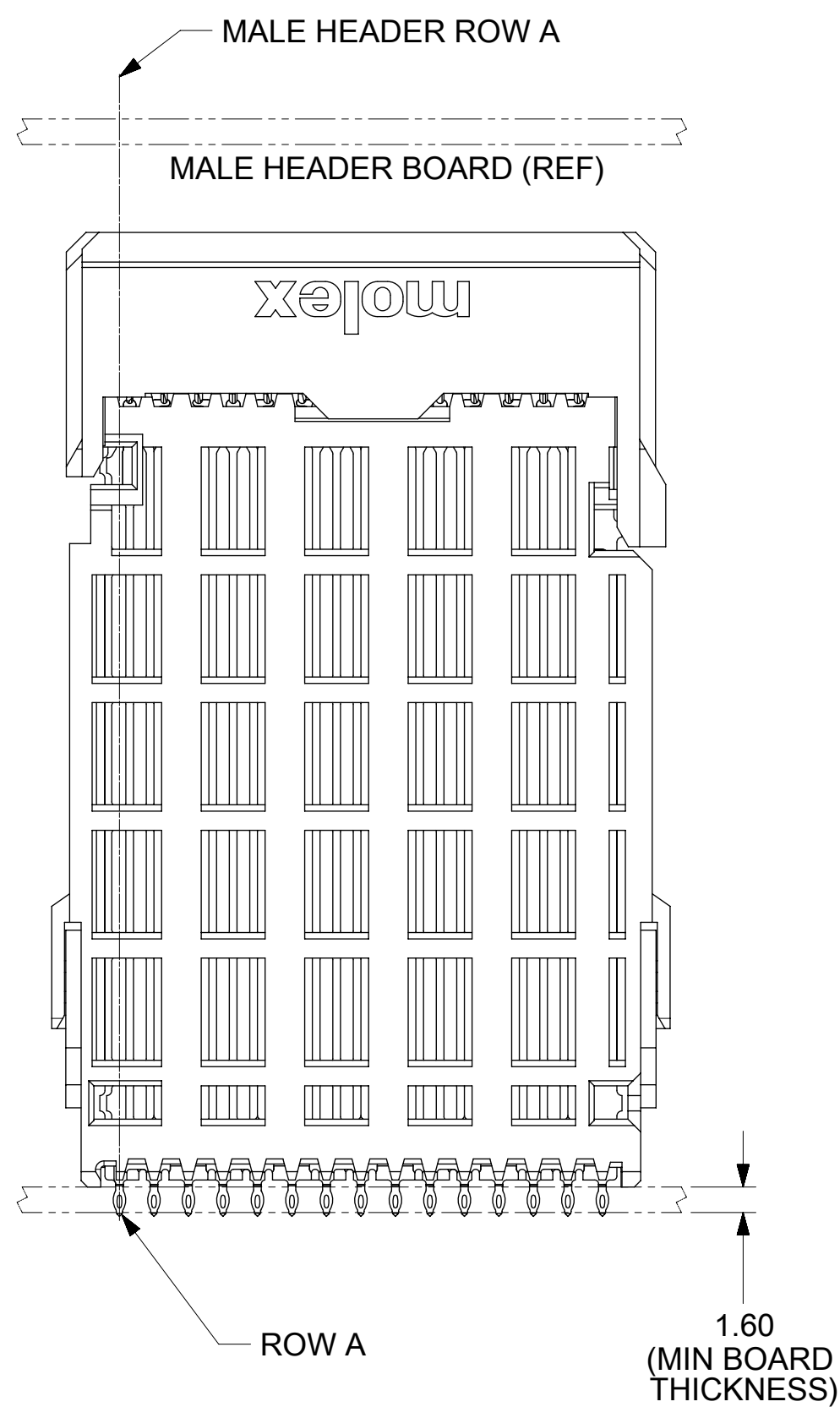


- NOTES:
1. MATERIALS: HOUSING - LIQUID CRYSTAL POLYMER (LCP), GLASS-FILLED, UL94V-0
TERMINALS - HIGH PERFORMANCE COPPER ALLOY
 2. FINISH: 30μIN SELECTIVE GOLD IN CONTACT AREA. SELECTIVE MATTE TIN ON PCB TAILS. NICKEL OVERALL.
 3. EACH SIGNAL WAFER CONTAINS 2 COLUMNS OF TERMINALS.
 4. PRODUCT SHALL BE PACKAGED PER PK-70873-0040 (40mm), PK-70873-0042 (28mm) OR PK-70873-0043 (38mm).
 5. FOR FURTHER INFORMATION SEE PRODUCT SPECIFICATION PS-76060-999.
 6. THIS PART CONFORMS TO CLASS B REQUIREMENTS OF COSMETIC SPEC PS-45499-002.
 7. PART SHOWN HAS AN OVERALL STACK HEIGHT OF 40mm. VARYING STACK HEIGHTS MAY BE AVAILABLE UPON REQUEST.
 8. REFER TO MOLEX SALES DRAWING SD-76055-001 FOR THE MATING HEADERS.
 9. REFER TO MOLEX PCB ROUTING GUIDE AS-76060-990 FOR ANTIPAD AND ROUTING RECOMMENDATIONS.
 10. "THESE DIMENSIONS REPRESENT THE AREA NEEDED TO ACCOMMODATE CONNECTOR INSERTION & REPAIR ON THE PC BOARD. THIS IS REFERRED TO AS THE "CONNECTOR KEEP OUT ZONE" AND DOES NOT REPRESENT THE ACTUAL PERIMETER OF THE CONNECTOR. WHEN LAYING OUT A PC BOARD WITH CONNECTORS STACKED TOGETHER, USE A 1.90mm PROGRESSION."
 11. MARKING: LOCATED APPROXIMATELY AS SHOWN. PART NUMBER AND DATE CODE.



SEE NOTE 11

SYMBOLS		THIS DRAWING CONTAINS INFORMATION THAT IS PROPRIETARY TO MOLEX ELECTRONIC TECHNOLOGIES, LLC AND SHOULD NOT BE USED WITHOUT WRITTEN PERMISSION			
▽ = 0	MM	SCALE	CURRENT REV DESC: MIGRATED TO NX		
▽ = 0	GENERAL TOLERANCES (UNLESS SPECIFIED)	3:1			
▽ = 0	ANGULAR TOL ± 0.5°				
▽ = 0	4 PLACES ±		EC NO: 600815		
▽ = 0	3 PLACES ±		DRWN: CCV	2018/03/16	
▽ = 0	2 PLACES ± 0.13		CHK'D: TELO	2018/07/16	
▽ = 0	1 PLACE ± 0.25		APPR: TELO	2018/07/16	
▽ = 0	0 PLACES ±		INITIAL REVISION:		
▽ = 0			DRWN: JONIAK	2008/11/14	
▽ = 0			APPR: JLAURX	2010/02/01	
▽ = 0	DRAFT WHERE APPLICABLE MUST REMAIN WITHIN DIMENSIONS	THIRD ANGLE PROJECTION	DRAWING	SERIES	DOCUMENT NUMBER
			C-SIZE	76530	SD-76530-001
					DOC TYPE DOC PART REVISION
					PSD 001 F4
					MATERIAL NUMBER CUSTOMER SHEET NUMBER
					SEE TABLE GENERAL MARKET 1 OF 2

PART NUMBER	# OF COLUMNS	# OF DIFF PAIR	DIM "A"	DIM "B"	DIM "C"	STACK HEIGHT (H)
76530-*020	10	50	19.0	17.10	25.36	28.00
76530-*022	12	60	22.8	20.90	25.36	28.00
76530-*027	14	70	26.6	24.70	25.36	28.00
76530-*026	16	80	30.4	28.50	25.36	28.00
76530-*030	10	50	19.0	17.10	35.36	38.00
76530-*032	12	60	22.8	20.90	35.36	38.00
76530-*037	14	70	26.6	24.70	35.36	38.00
76530-*036	16	80	30.4	28.50	35.36	38.00
76530-*040	10	50	19.0	17.10	37.36	40.00
76530-*042	12	60	22.8	20.90	37.36	40.00
76530-*047	14	70	26.6	24.70	37.36	40.00
76530-*046	16	80	30.4	28.50	37.36	40.00

76530-*0**

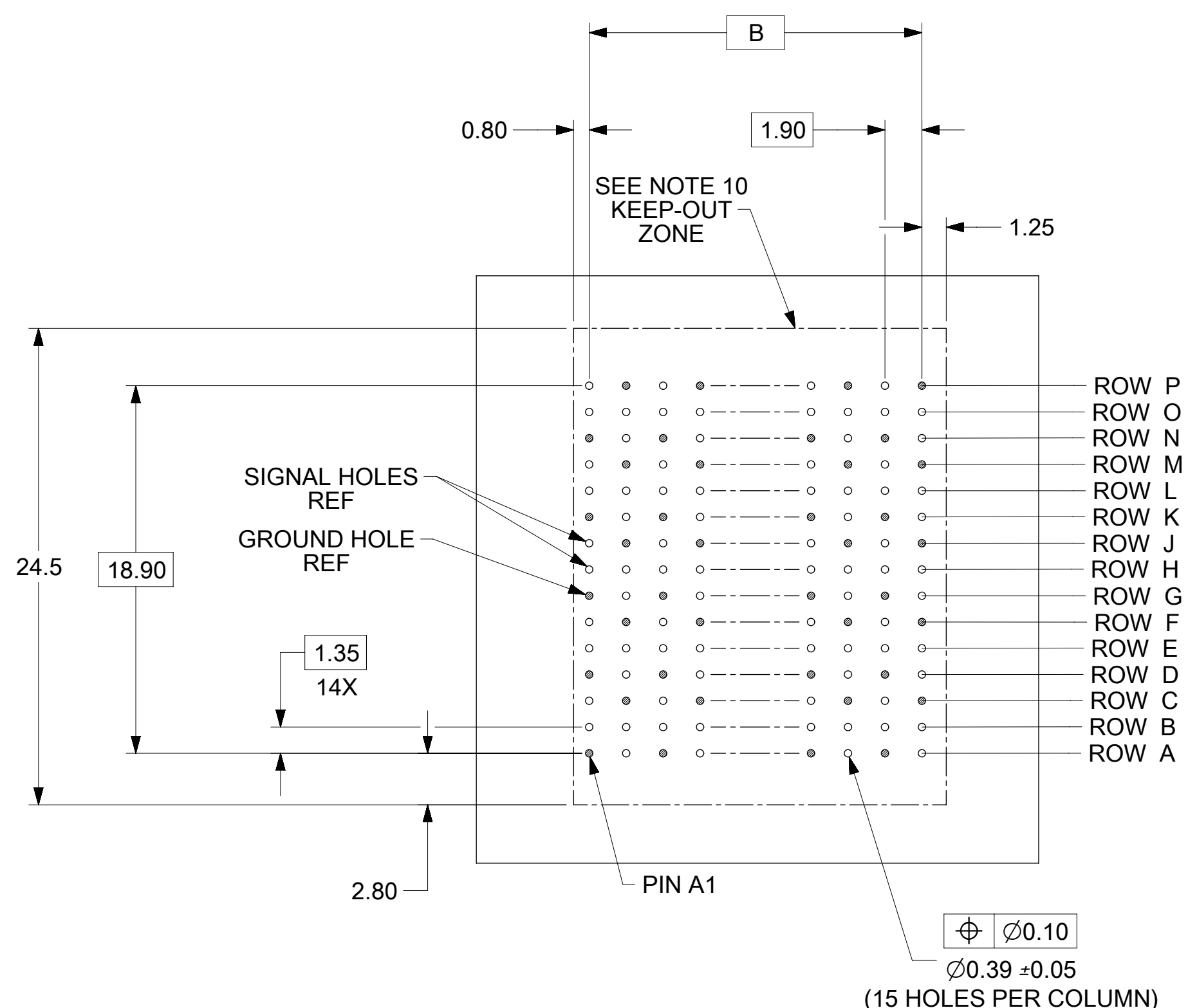
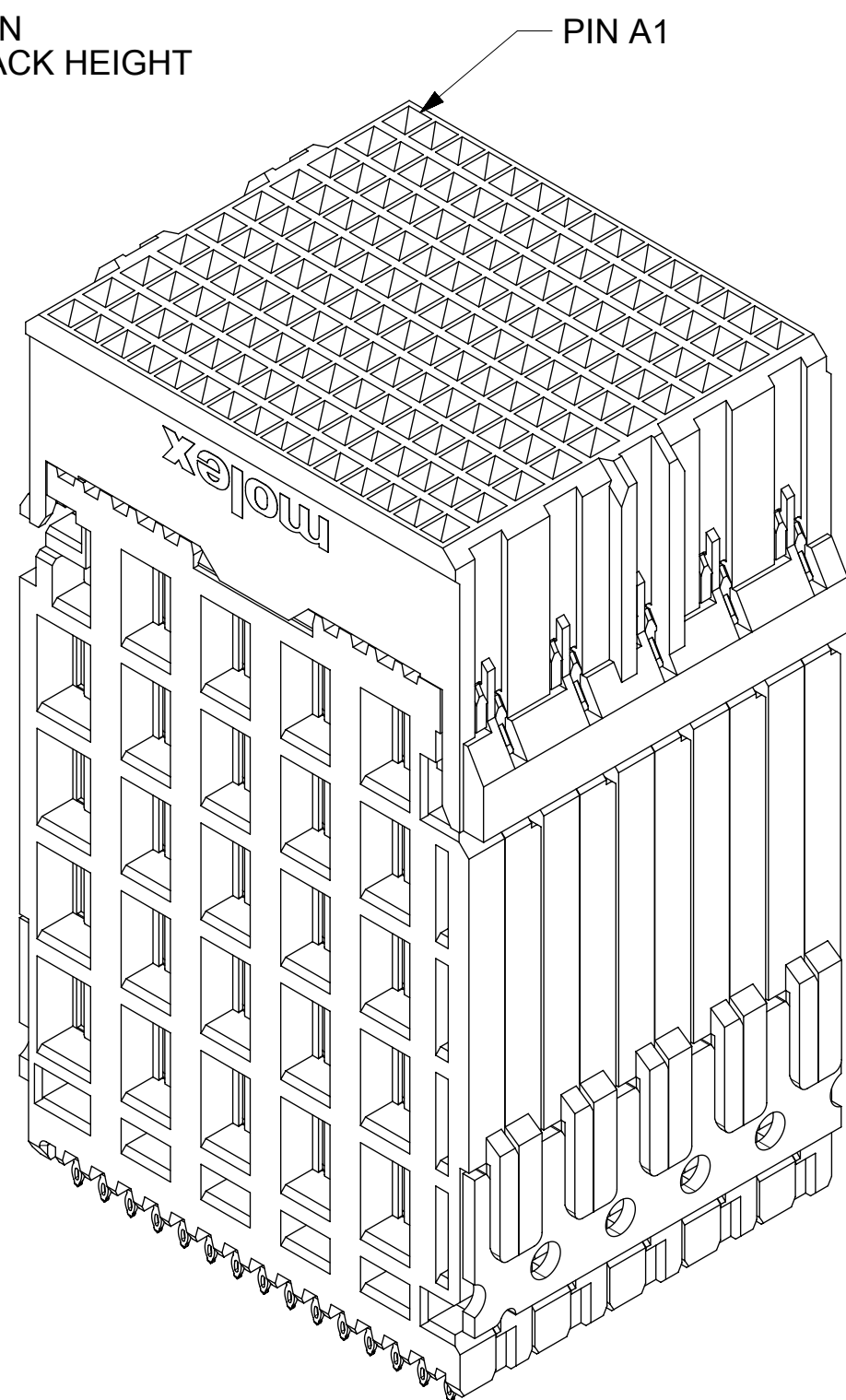
1 = OPEN LEAD-FREE

OF COLUMNS
 0 = 10 COL MICRO COMPLIANT
 2 = 12 COL MICRO COMPLIANT
 6 = 16 COL MICRO COMPLIANT
 7 = 14 COL MICRO COMPLIANT

STACK HEIGHT
 2 = 28mm
 3 = 38mm
 4 = 40mm

10 COLUMN
 40 MM STACK HEIGHT

PIN A1



VERTICAL FEMALE HOLE PATTERN
 (CONNECTOR SIDE)

SYMBOLS		THIS DRAWING CONTAINS INFORMATION THAT IS PROPRIETARY TO MOLEX ELECTRONIC TECHNOLOGIES, LLC AND SHOULD NOT BE USED WITHOUT WRITTEN PERMISSION			
DIMENSION UNITS: MM SCALE: 3:1		CURRENT REV DESC: MIGRATED TO NX			
GENERAL TOLERANCES (UNLESS SPECIFIED) ANGULAR TOL ± 0.5°		EC NO: 600815 DRWN: CCV 2018/03/16 CHK'D: TELO 2018/07/16 APPR: TELO 2018/07/16		IMPACT 5-PAIR VERTICAL MEZZANINE UNGUIDED SALES DWG	
4 PLACES ± 3 PLACES ± 2 PLACES ± 0.13 1 PLACE ± 0.25 0 PLACES ±		INITIAL REVISION: DRWN: JONIAK 2008/11/14 APPR: JLAURX 2010/02/01		PRODUCT CUSTOMER DRAWING	
DRAFT WHERE APPLICABLE MUST REMAIN WITHIN DIMENSIONS		THIRD ANGLE PROJECTION		DOCUMENT NUMBER: SD-76530-001 DOC TYPE: PSD DOC PART: 001 REVISION: F4	
		DRAWING: C-SIZE SERIES: 76530		MATERIAL NUMBER: SEE TABLE CUSTOMER: GENERAL MARKET SHEET NUMBER: 2 OF 2	